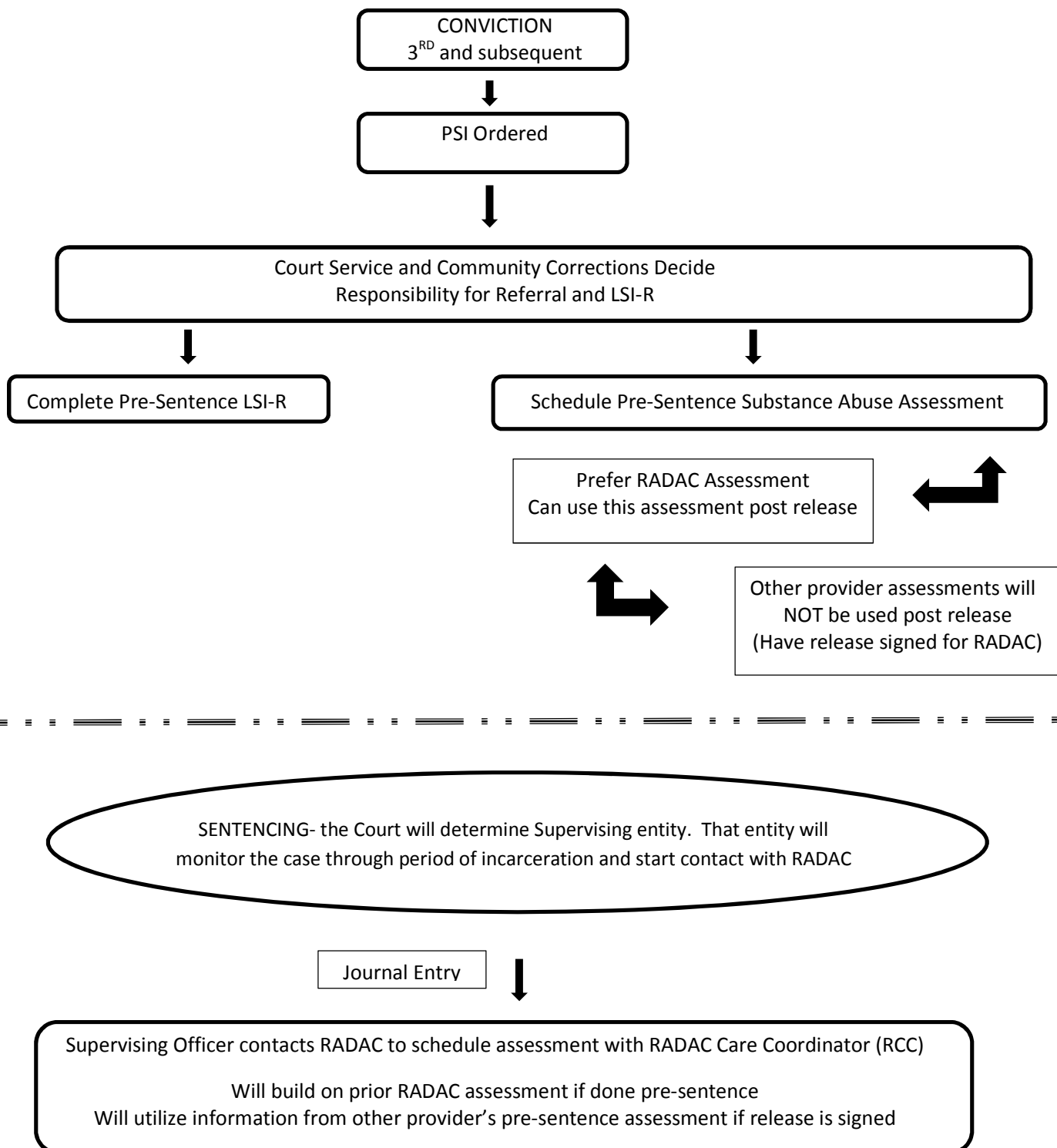


DUI FLOW CHART

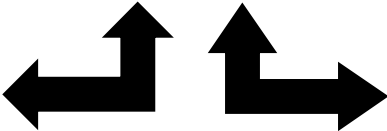


RCC meets with offender; releases signed to all stakeholders, complete KCPC (approved assessment), the RCC receive information regarding LSIR and other background and the officer in charge is informed. Officer and RCC discuss recovery recommendation, level of supervision, and barriers to engagement in services.



RCC and Offender complete wellness recovery plan, barriers to engagement addressed (possible usage of barrier reduction/ Medication assisted treatment, funding dollars assigned and addressed in wellness plan), Supervision officer, RCC, and offender, the Recovery Coach (RC) and any other involved stakeholder, or treatment provider (if offender has entered services) hold multi-disciplinary meeting (MDT) and contractual obligations signed by offender.

Offender meets criteria for Substance Use Disorders treatment, Value Options begins Managed care process with provider, RRCC and RC works with offender in pretreatment activates and readiness as addressed in wellness plan until placement in treatment facility. Treatment provider provides needed identified services and also provides services of a peer mentor (When Available), who becomes active member of MDT



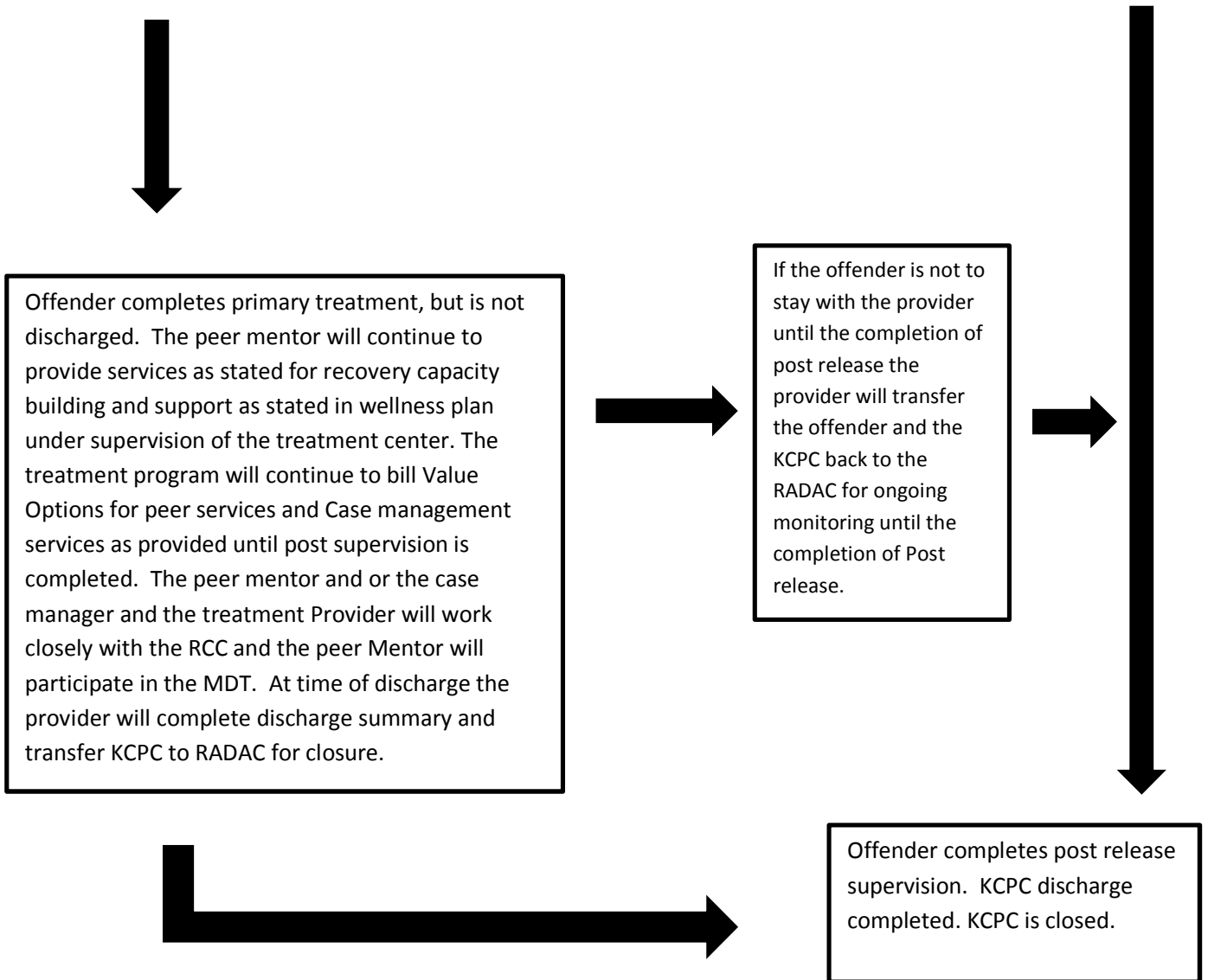
Offender does not meet criteria for Substance Use Disorders treatment, or has recently completed treatment and is currently doing activities that support recovery. The RCC, the RC and the offender continue to address goals and task in wellness plan and services are coordinated for supervision and oversight by the offender, the RCC and the officer in charge



Offender returns to substance usage

Intervention by RCC and officer in charge for changes in service plan, may be placed in treatment services, or increased supervision support or revoked





RADAC is the central communication agent, any member of the multi-disciplinary team may request meeting as needed. There will be meetings scheduled during the year in a central regional area by the RADAC that will include the court service agencies, the SRS and providers to update, evaluate, problem solve and facilitate communication between agencies.