

# Juvenile Justice Oversight Committee

## Quarterly Data Presentation

2<sup>nd</sup> Quarter 2025

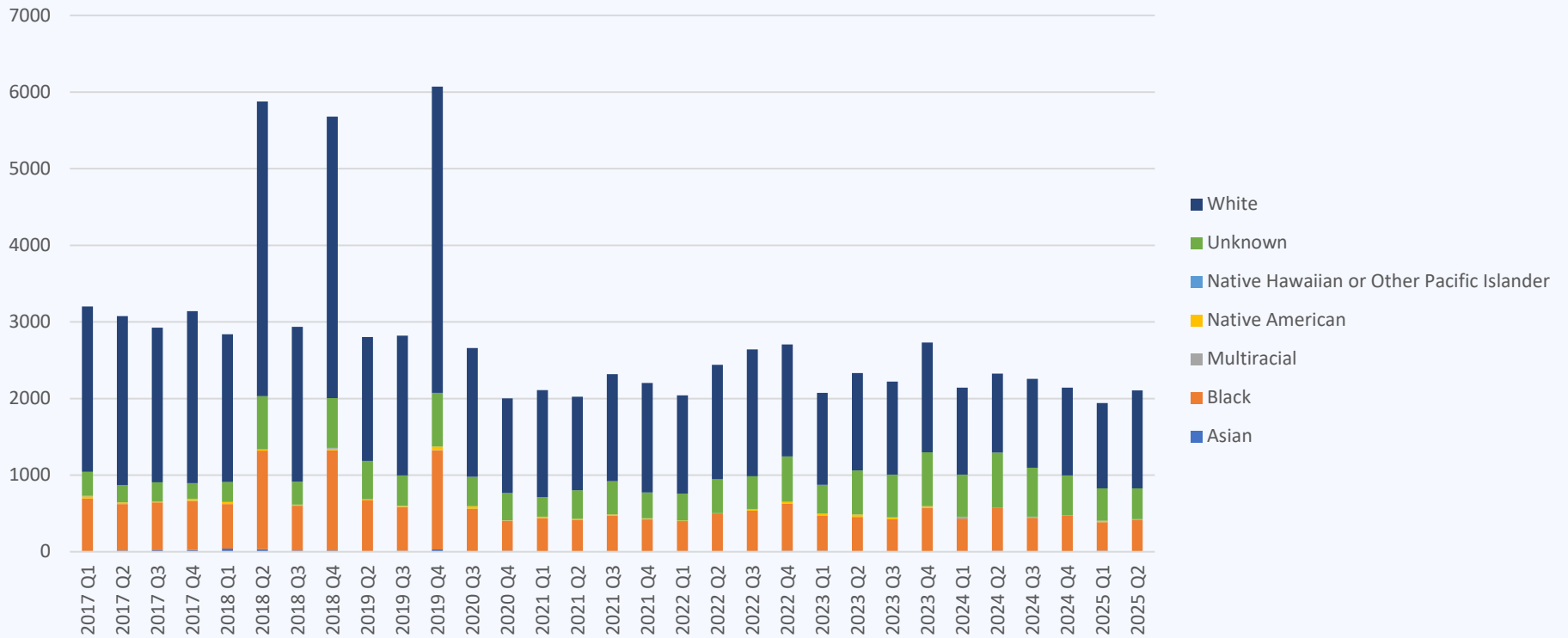
2016 - 2025



# SB367 Performance Measures Phase 1

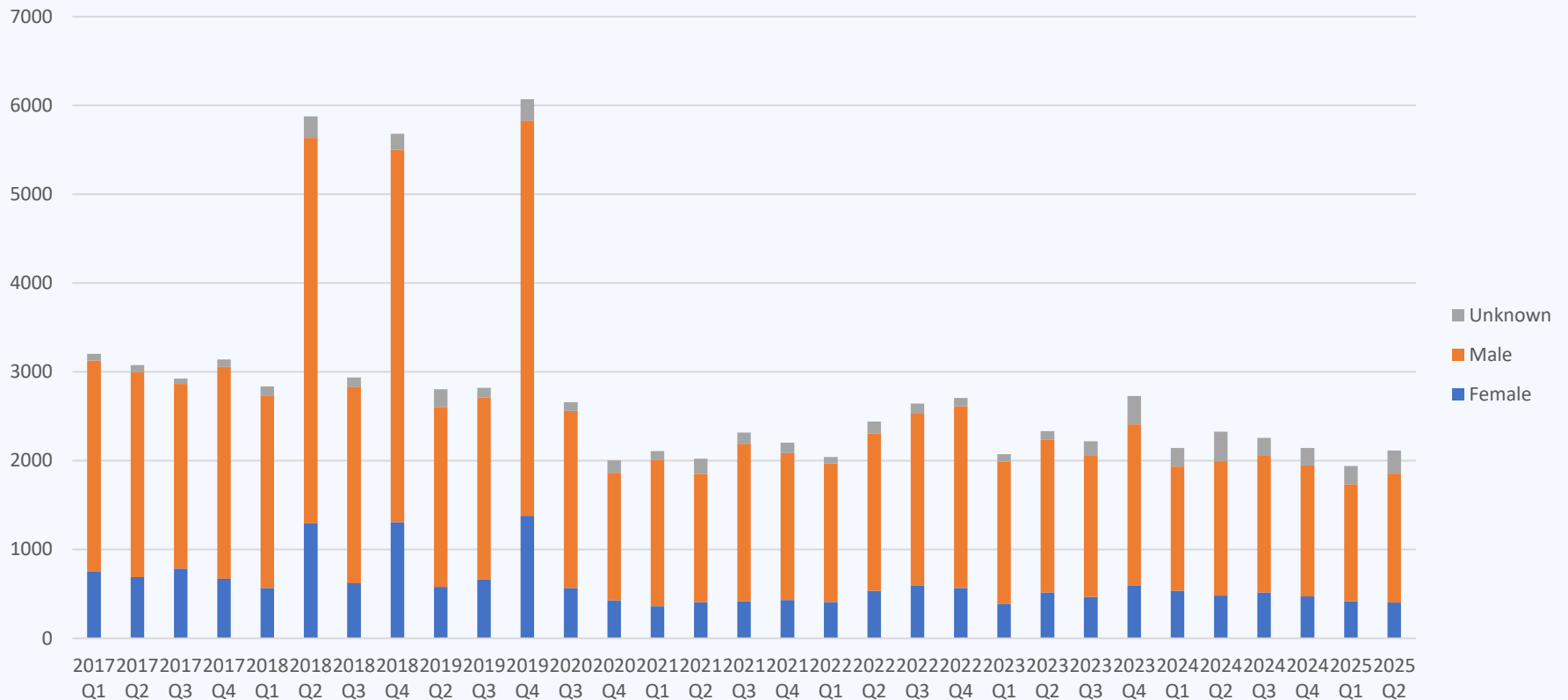


## Total number of juvenile offender filings by race



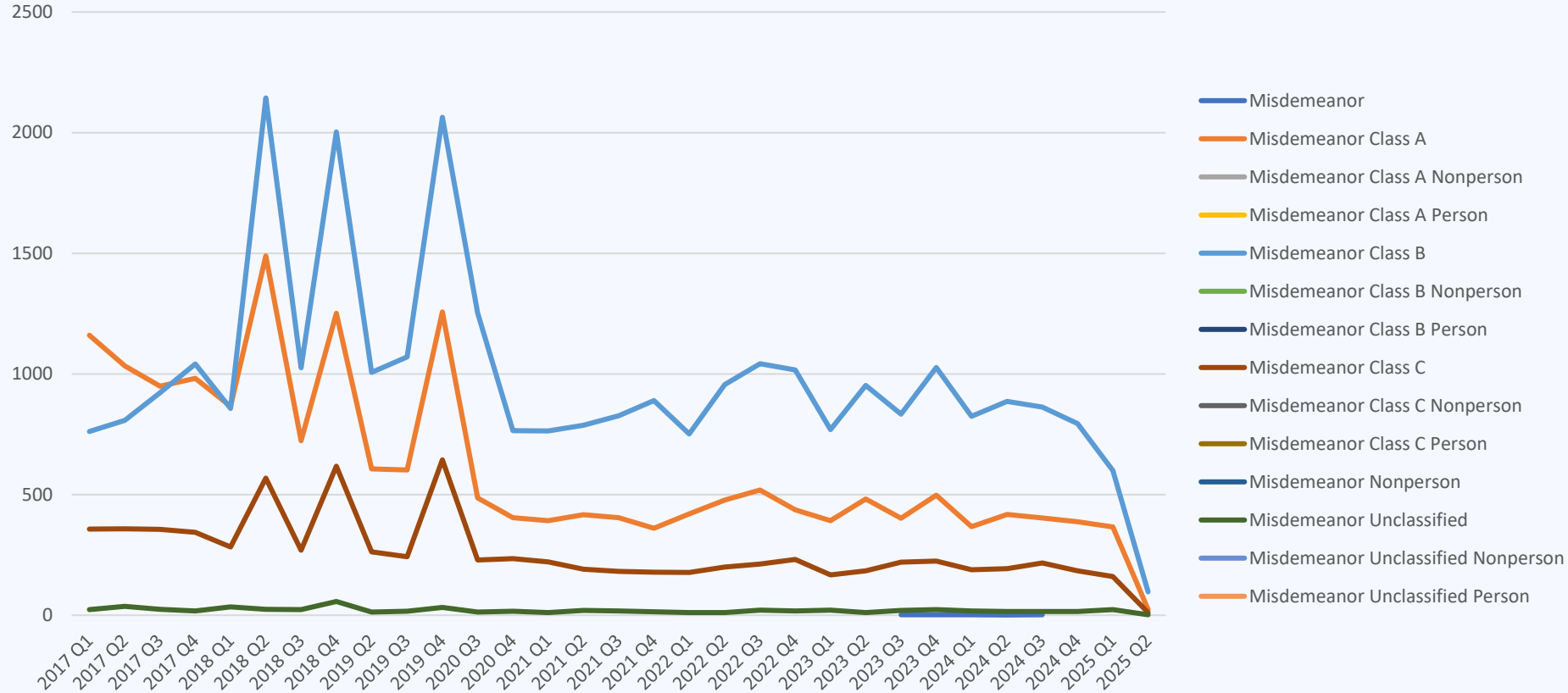


## Total number of juvenile offender filings by gender



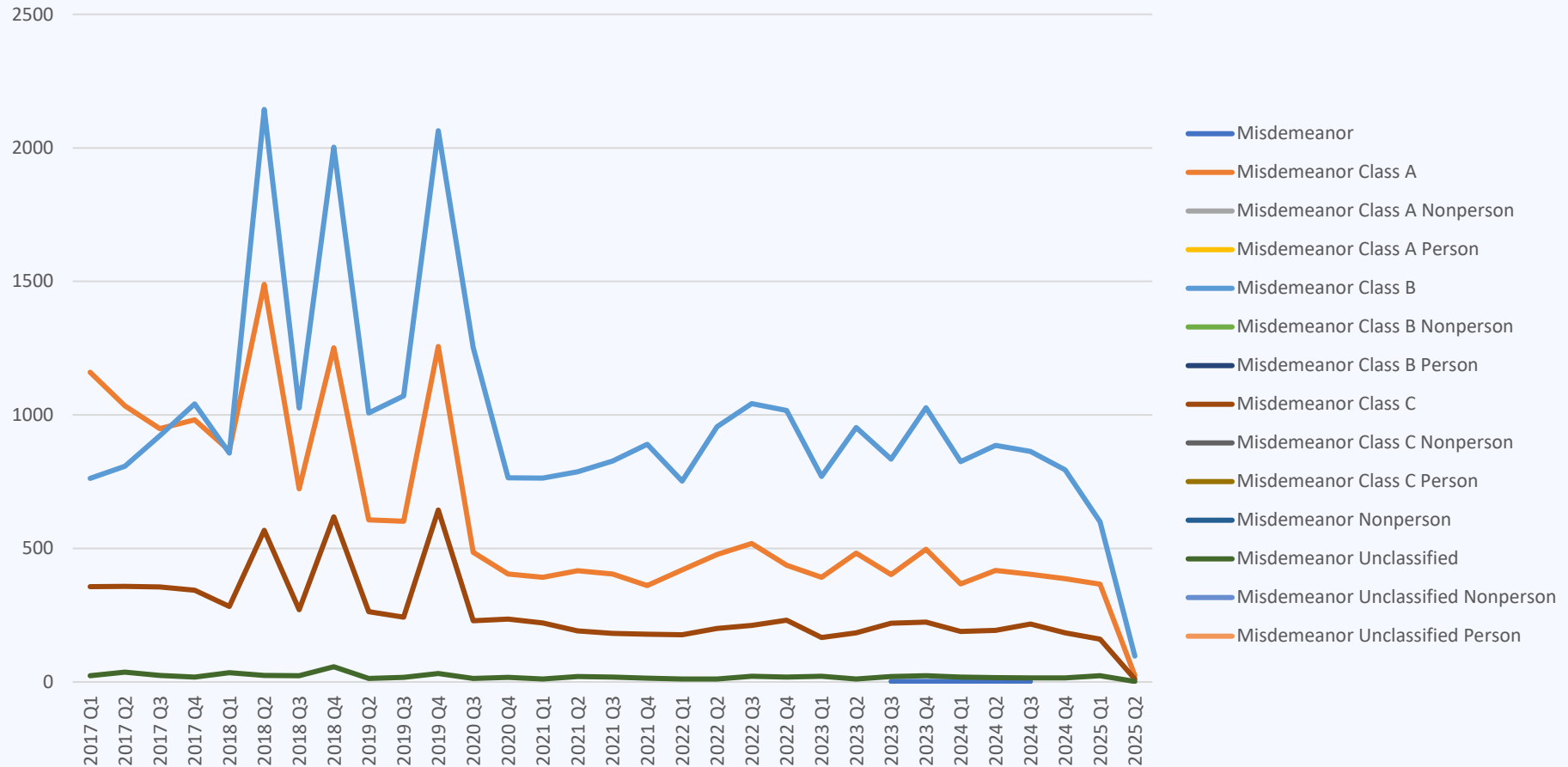


## Total number of juvenile offender filings by offense type - felony





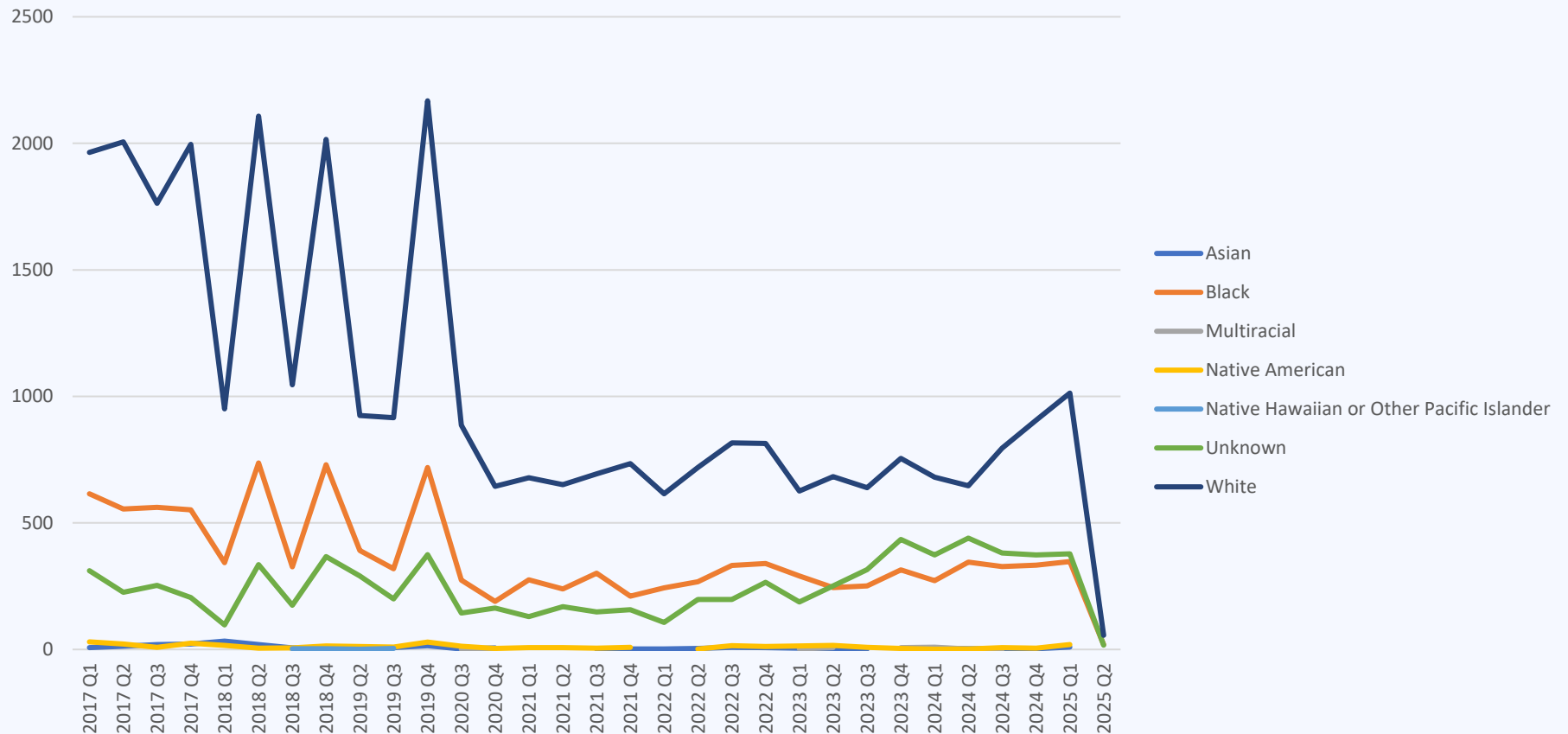
## Total number of juvenile offender filings by offense type - misdemeanor



# Kansas Judicial Branch



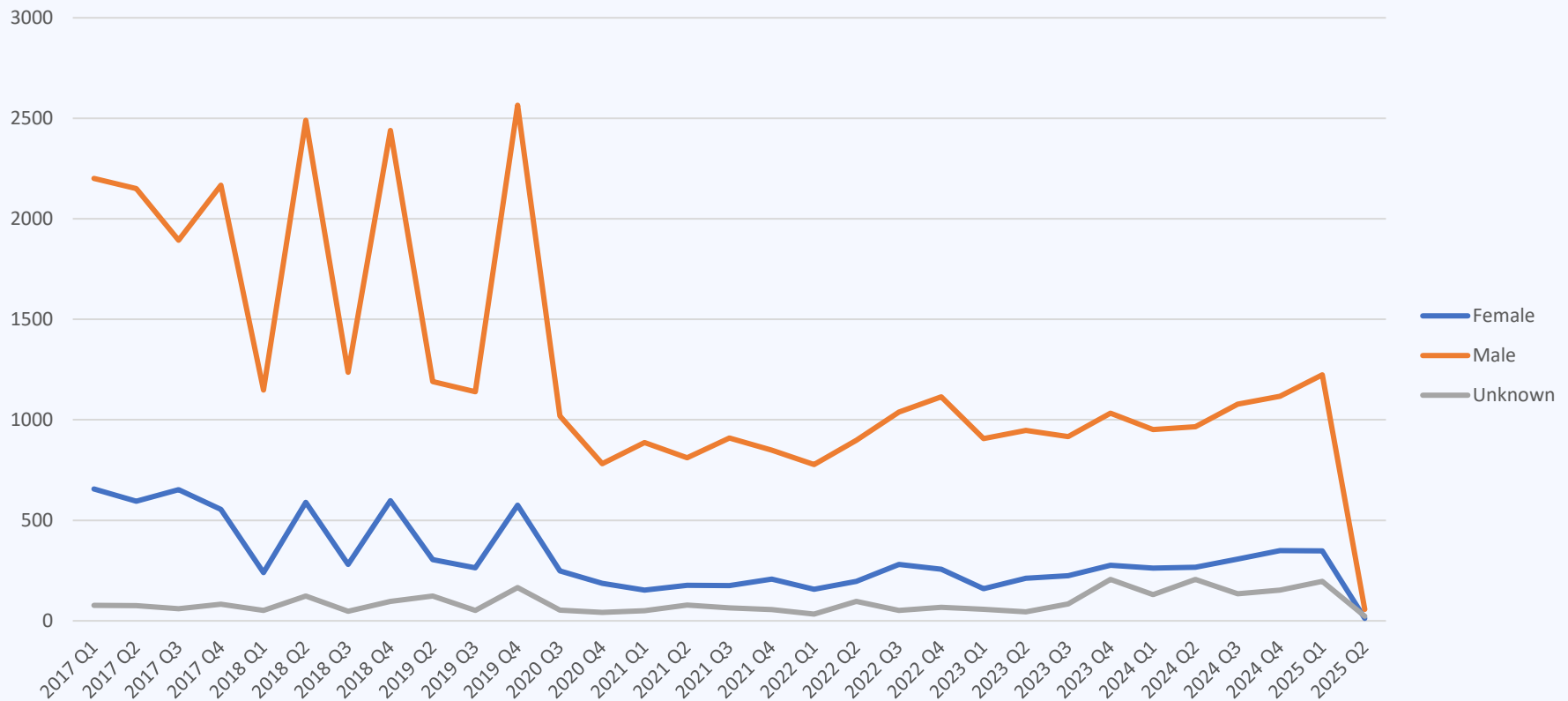
## Total number of juvenile offender adjudications by race



# Kansas Judicial Branch



## Total number of juvenile offender adjudications by gender



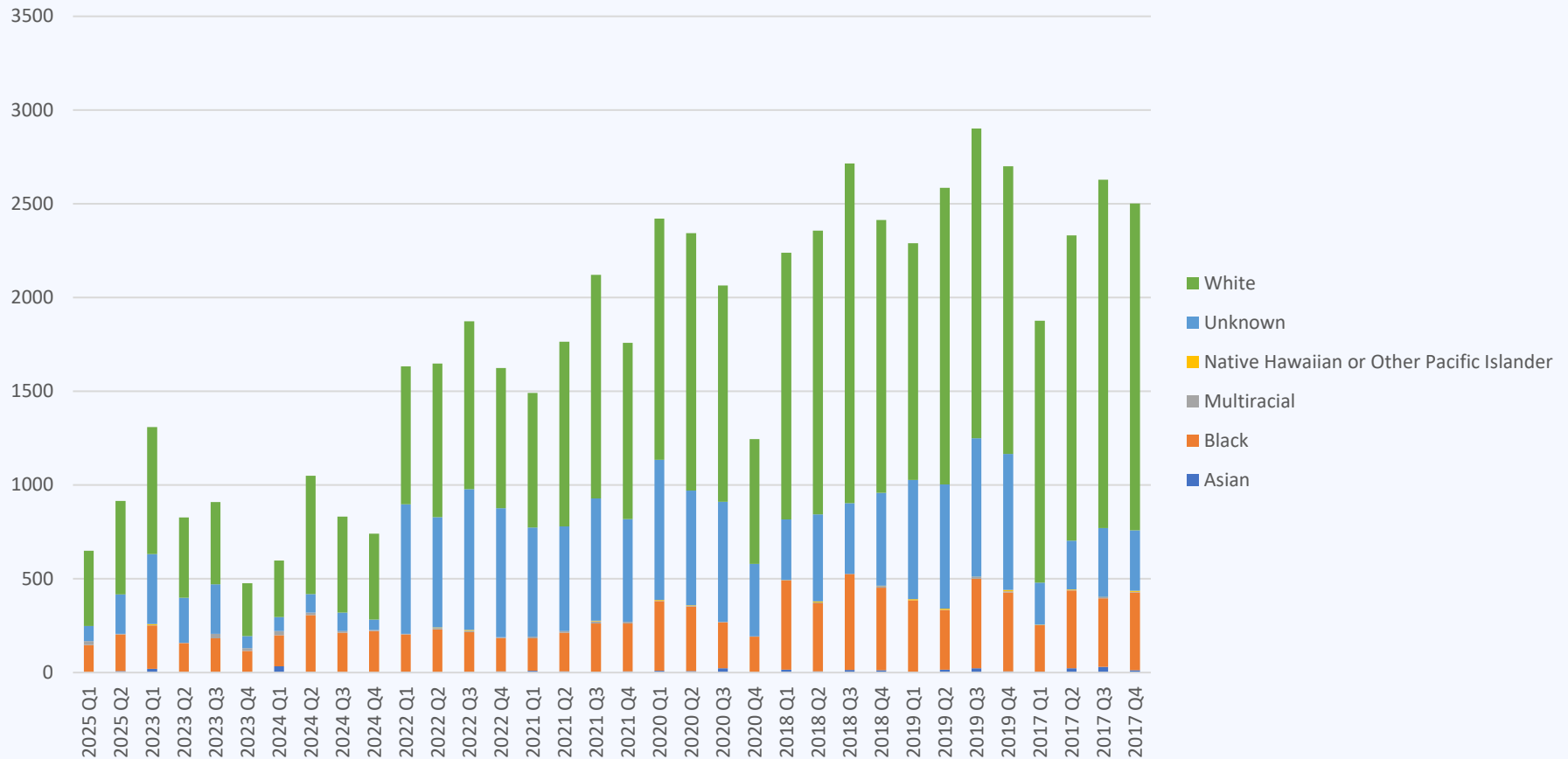






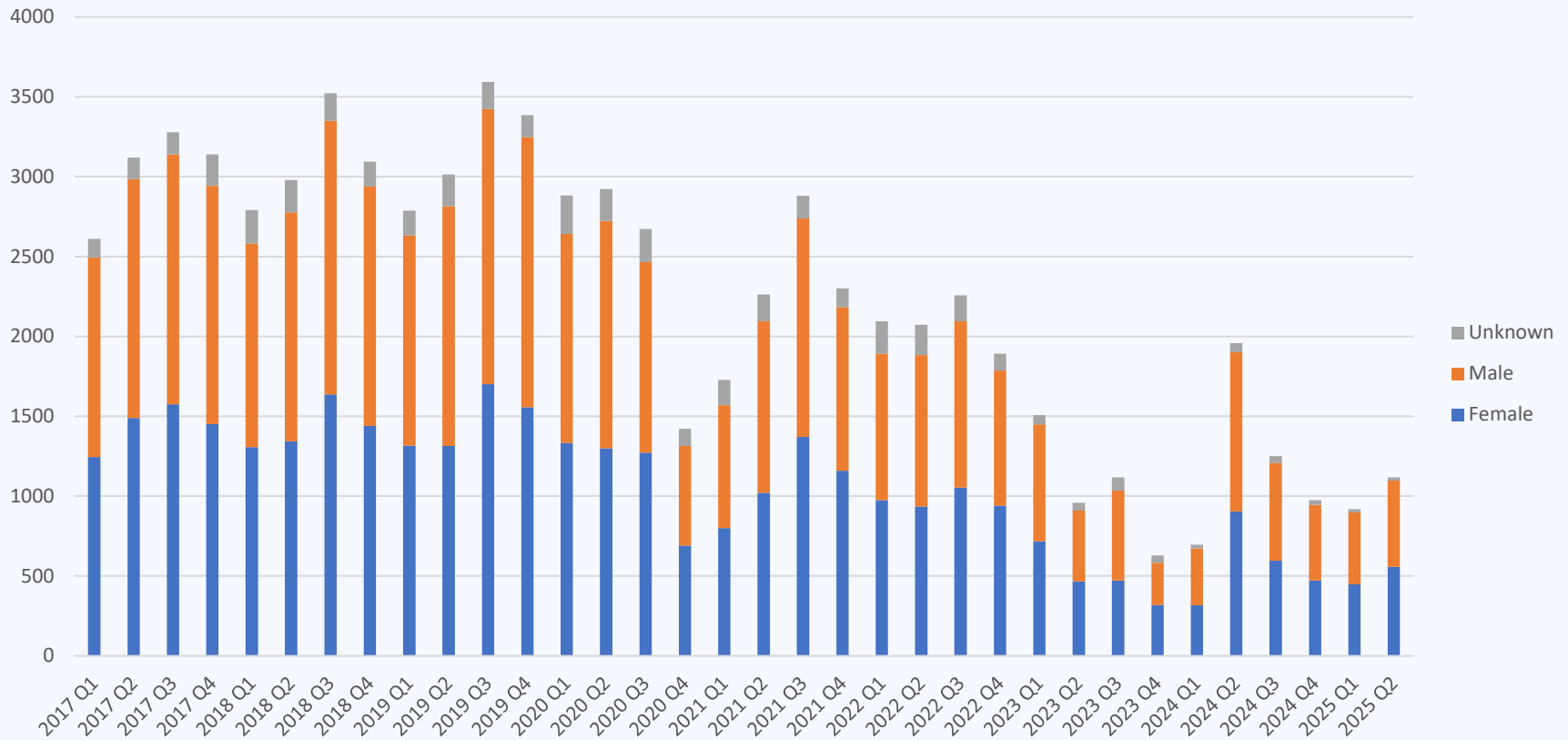


## Total number of CINC filings by race



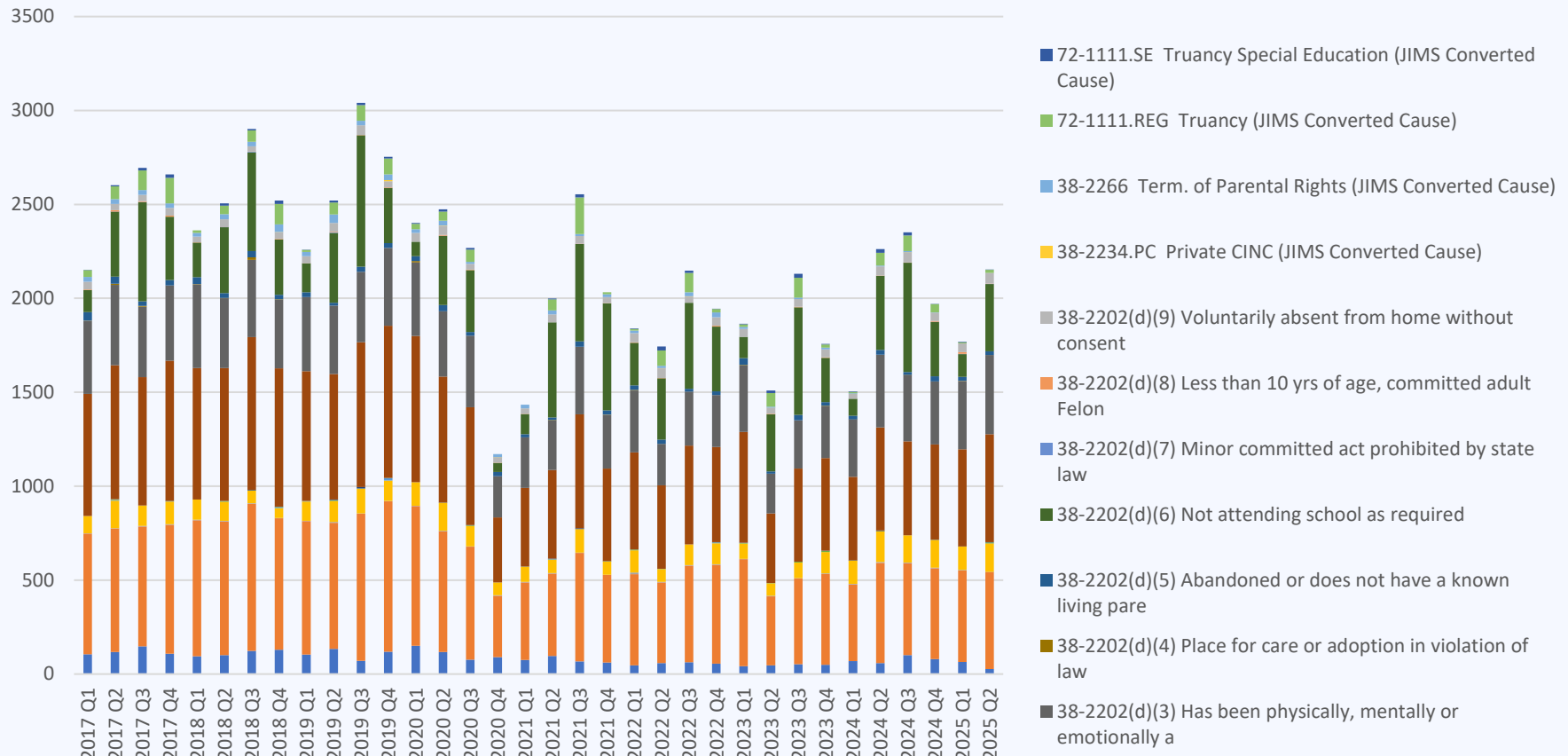


## Total number of CINC filings by gender





## Total number of CINC filings by cause





# Total number of youth ordered to probation by race, gender, offense type





# Total number of youth ordered to court services by risk level

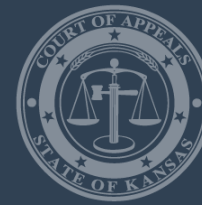




# Average length of probation by race, gender, offense type

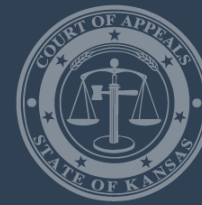






# Average length of supervision for youth receiving EDC by race, gender, offense type





# Total number of youth receiving EDC by race, gender, offense type

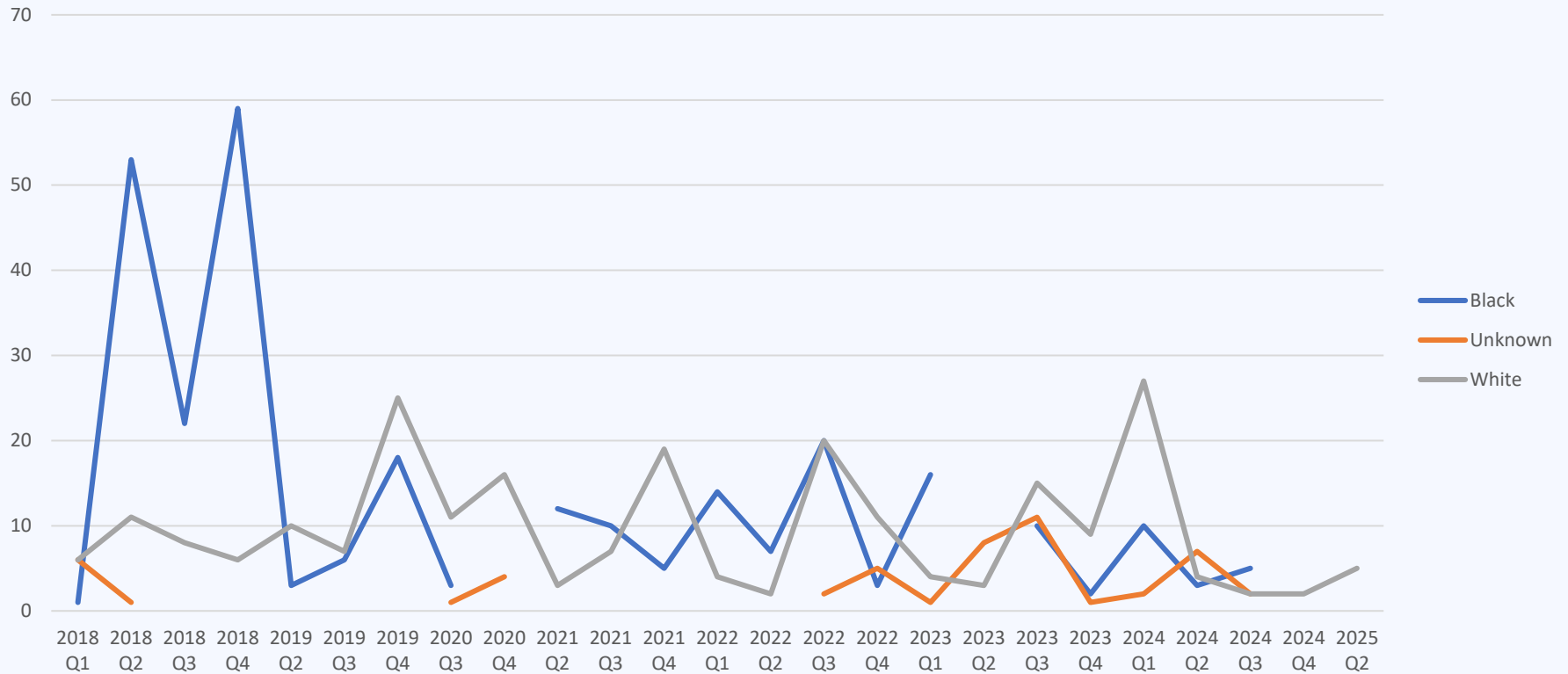




# SB367 Performance Measures Phase 2

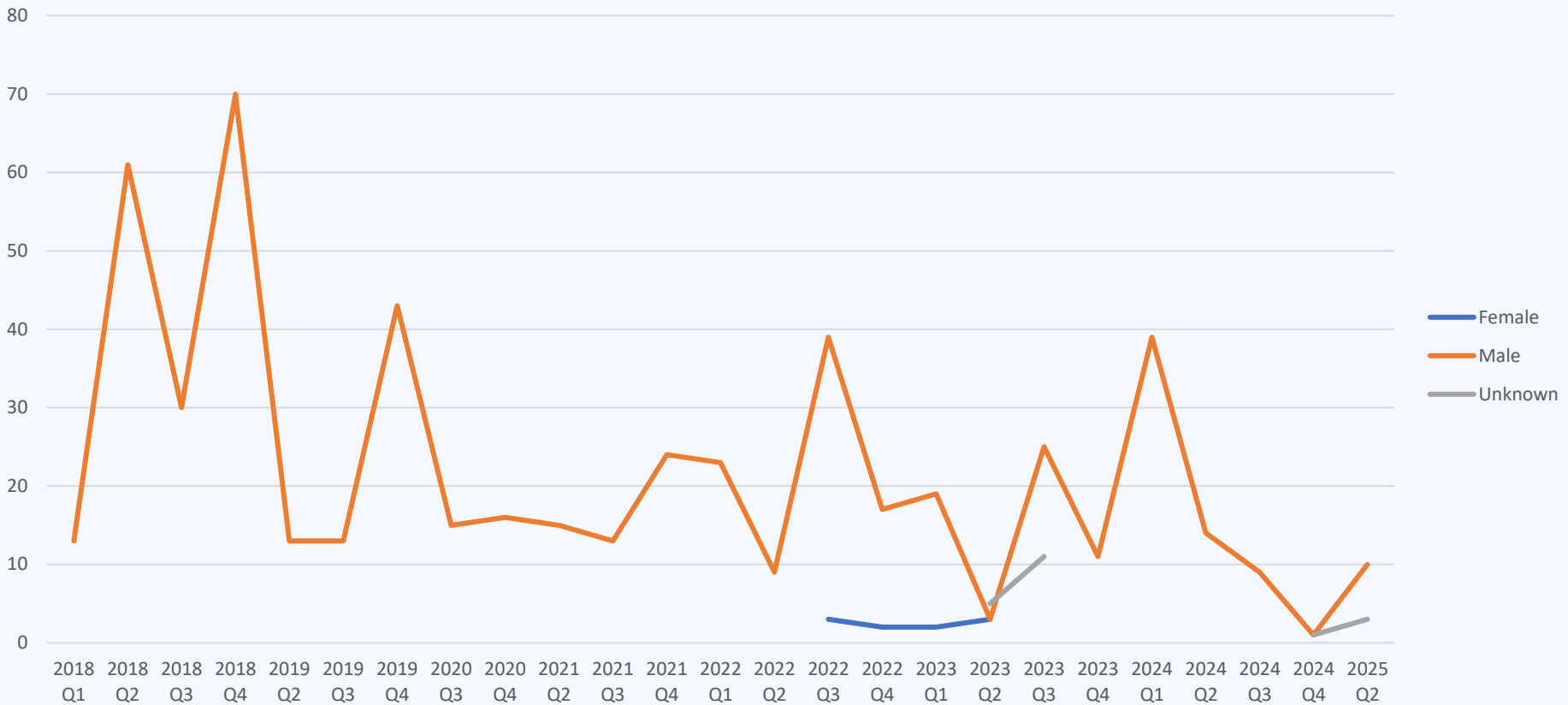


## Number of cases transferred to the adult system by race





## Number of cases transferred to the adult system by gender

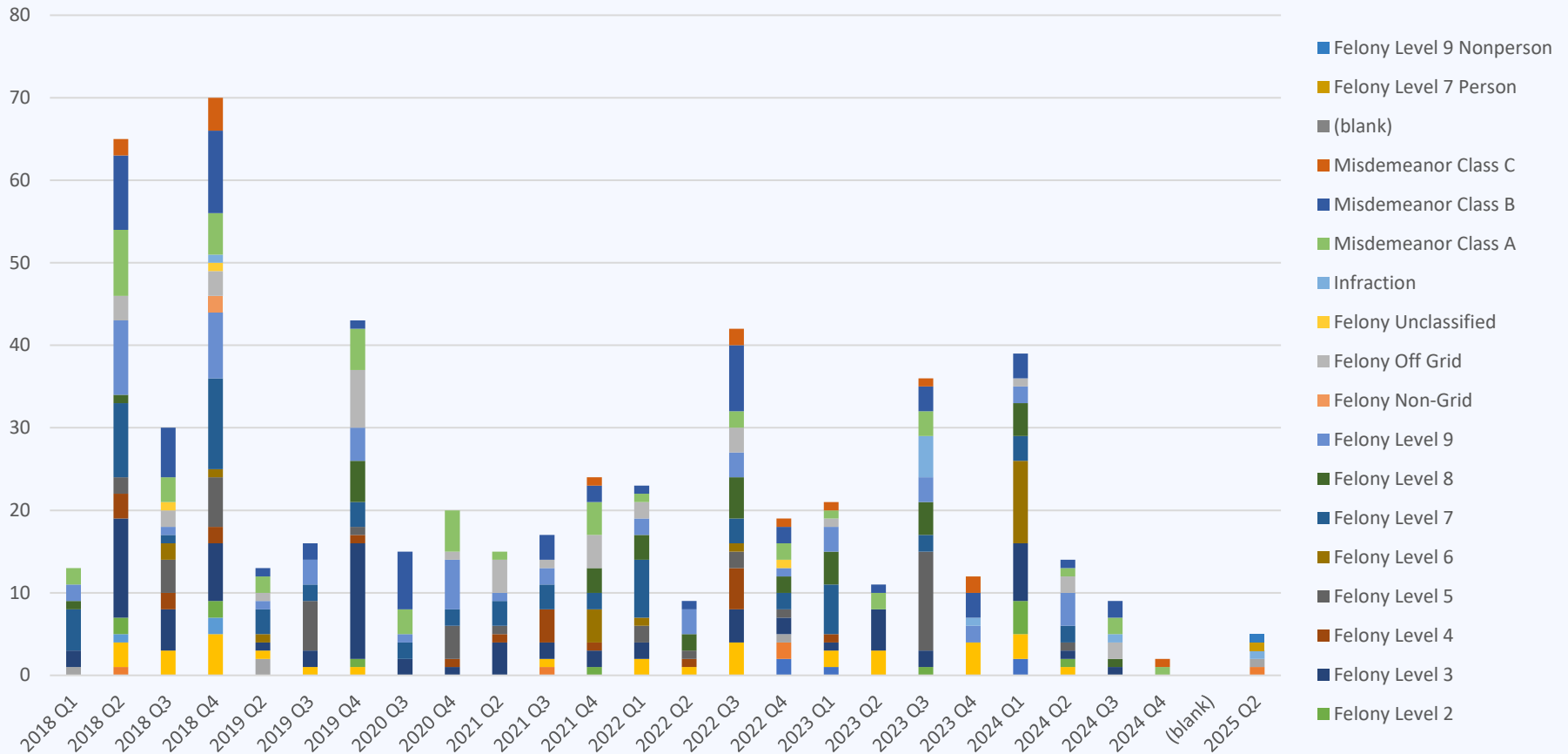




# Kansas Judicial Branch

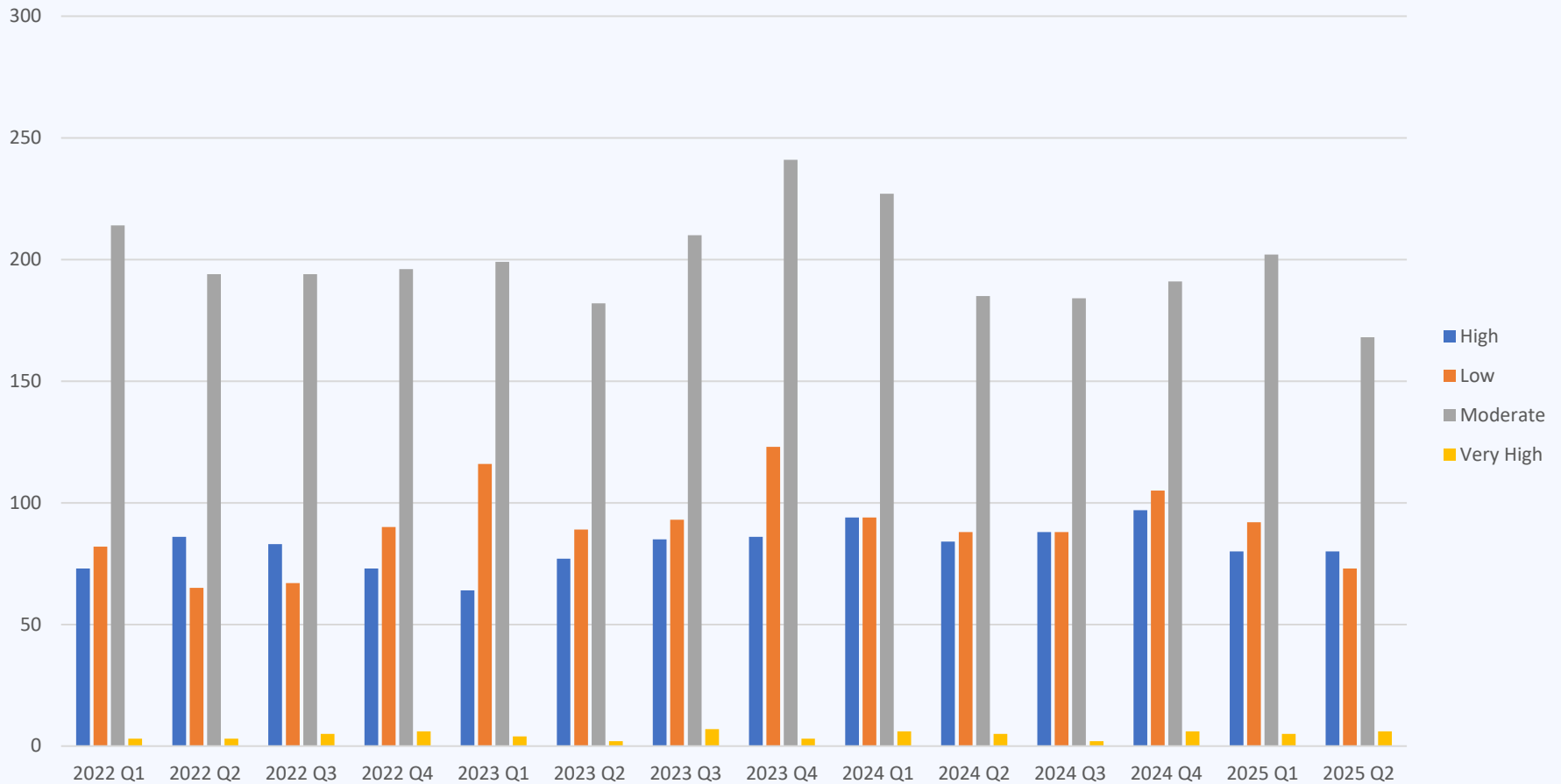


## Number of cases transferred to the adult system by offense - misdemeanor



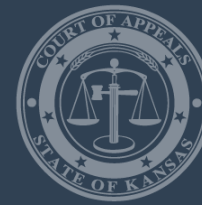


## Total number of YLS/CMI completed

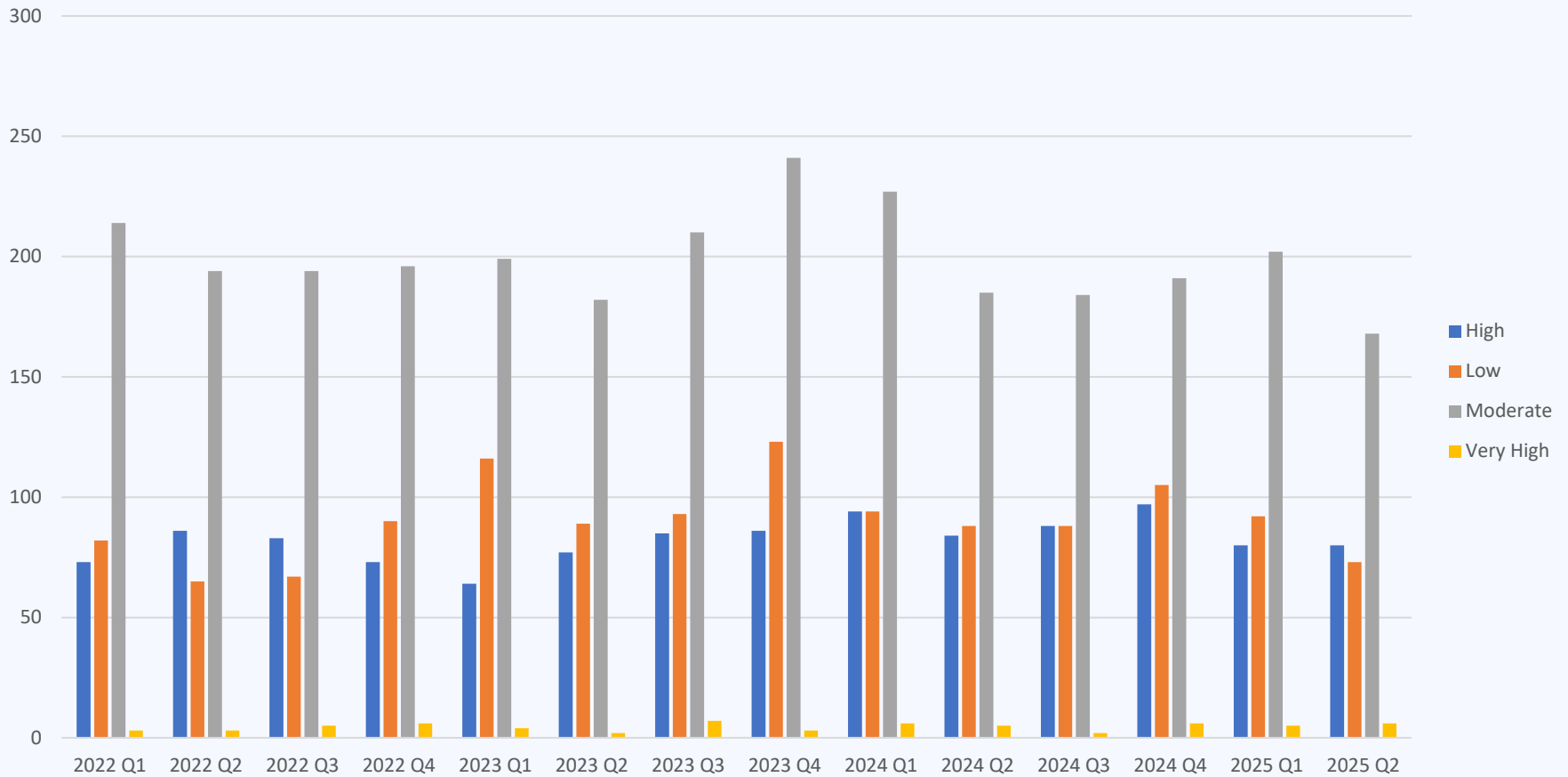




# Kansas Judicial Branch



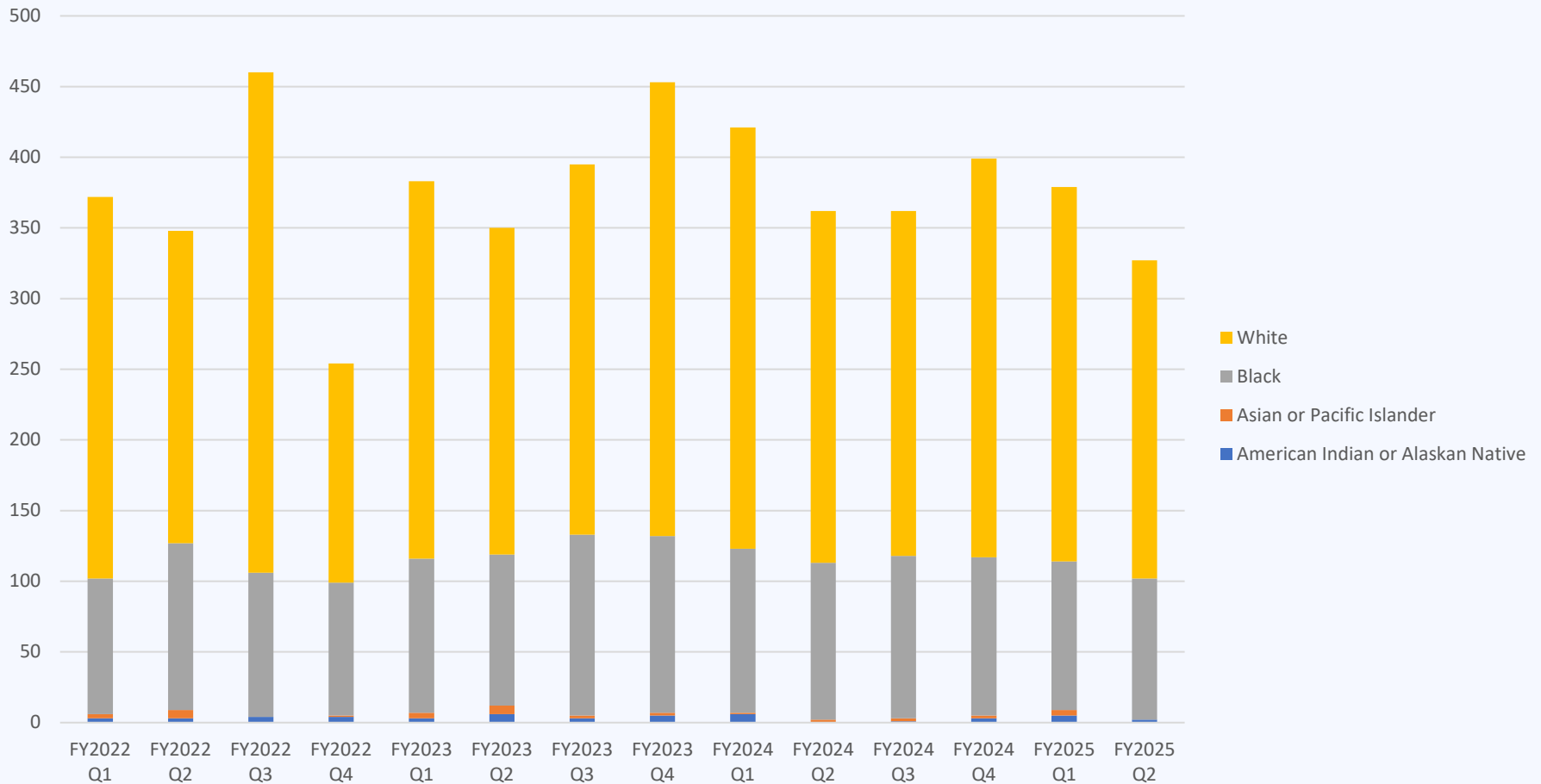
## Total number of YLS/CMIs by risk level



# Kansas Judicial Branch



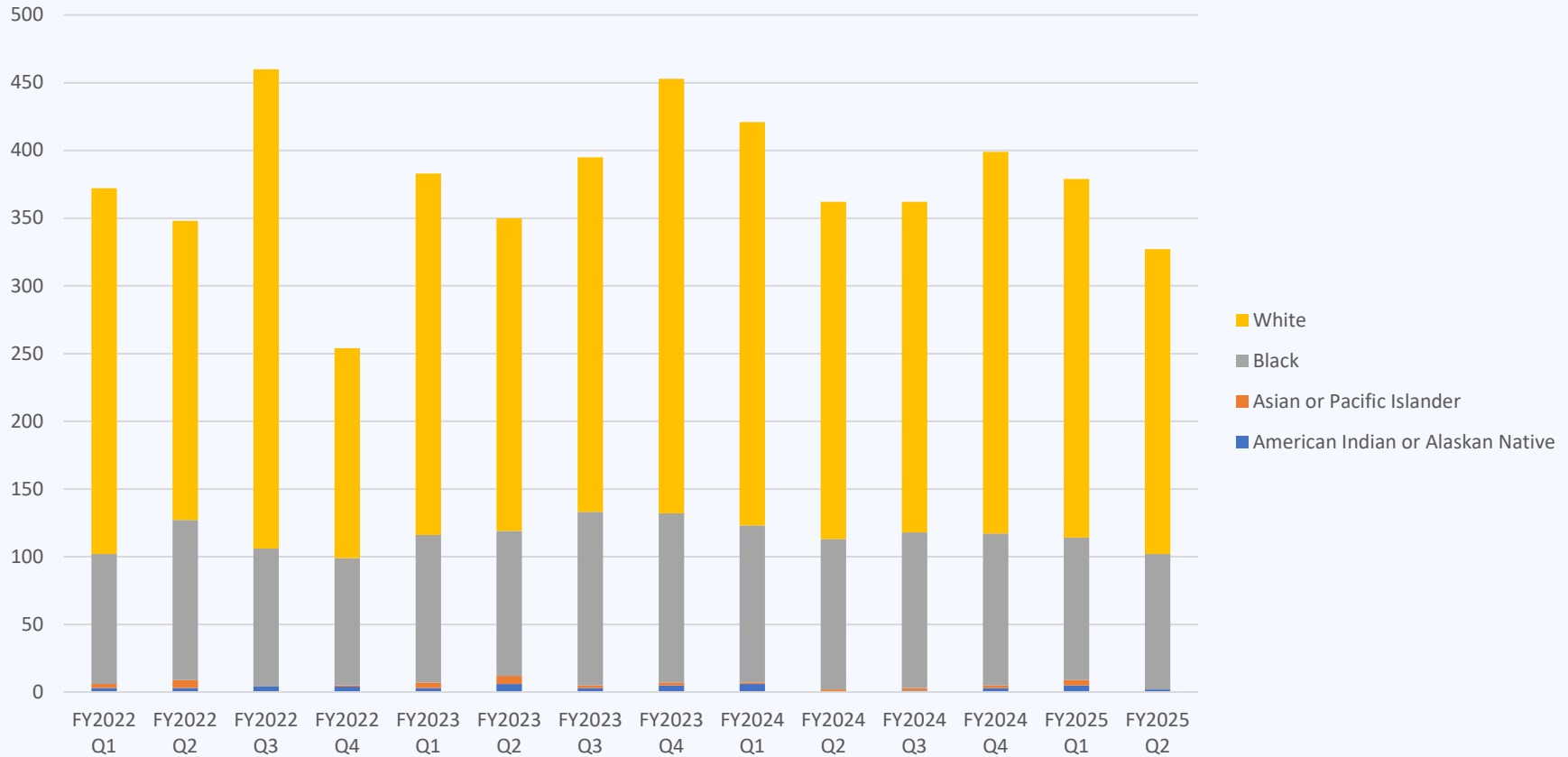
## Total number of YLS/CMIs by race



# Kansas Judicial Branch



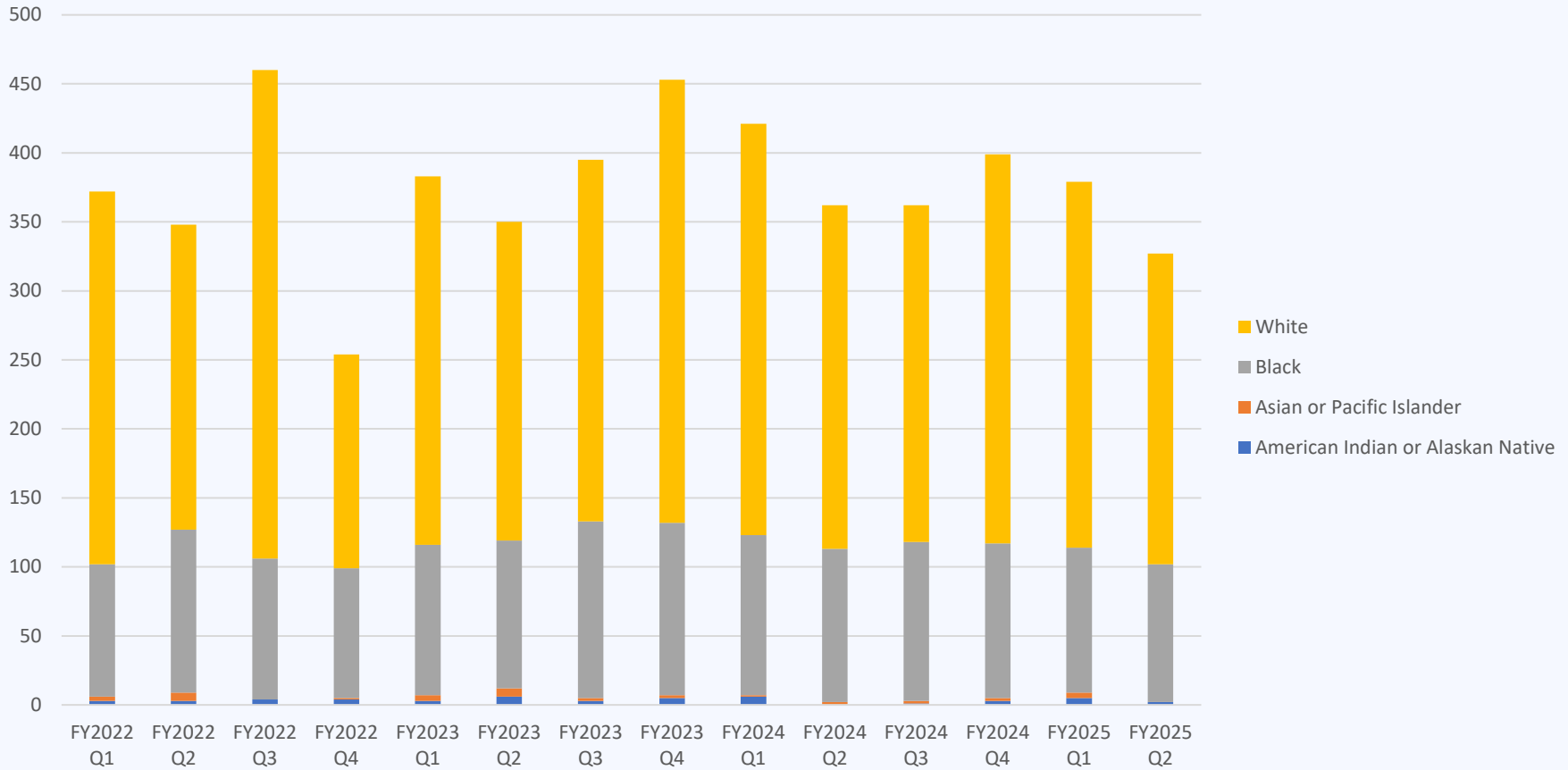
## Total number of YLS/CMIs by gender - female



# Kansas Judicial Branch



## Total number of YLS/CMIs by gender - Male





# Total number of EJJ filed by race, gender, offense type





# Total number of sanctions given by supervision type





Total number of youth that received a behavior response by supervision type, race, gender





# Total number of incentives given by supervision type

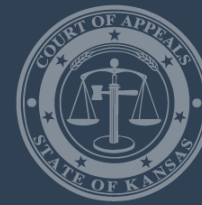






Total number of youth with subsequent adjudication within 24 months after successful diversion completion





# Total number of youth supervised on probation who recidivated\*





# Total number of youth whose probation violation was reported to Court





Total number of youth that probation length was extended.





# Total number of youth with successful/unsuccessful discharge from probation

