



Juvenile Justice Oversight Committee

Quarterly Data Presentation

4th Quarter 2024

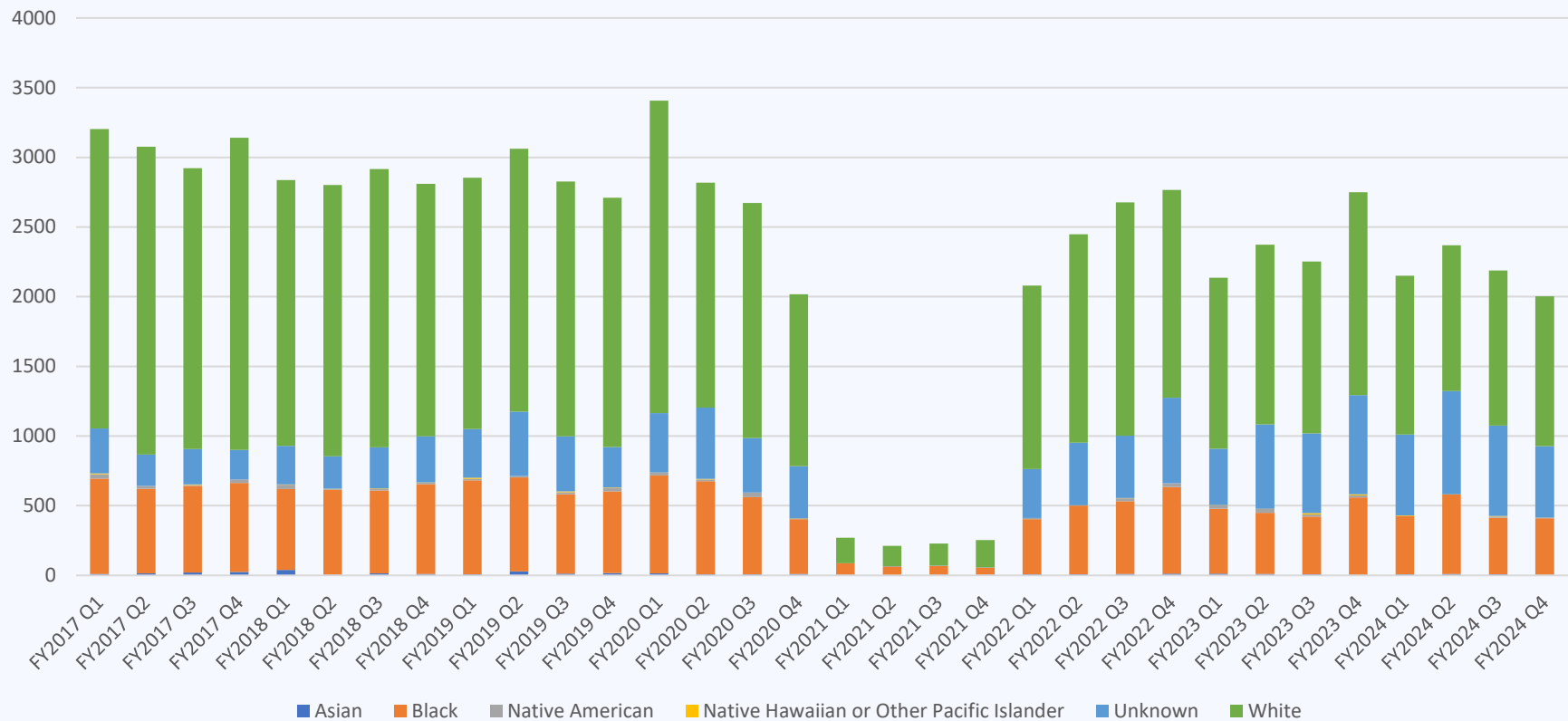
2016 - 2024



SB367 Performance Measures Phase 1

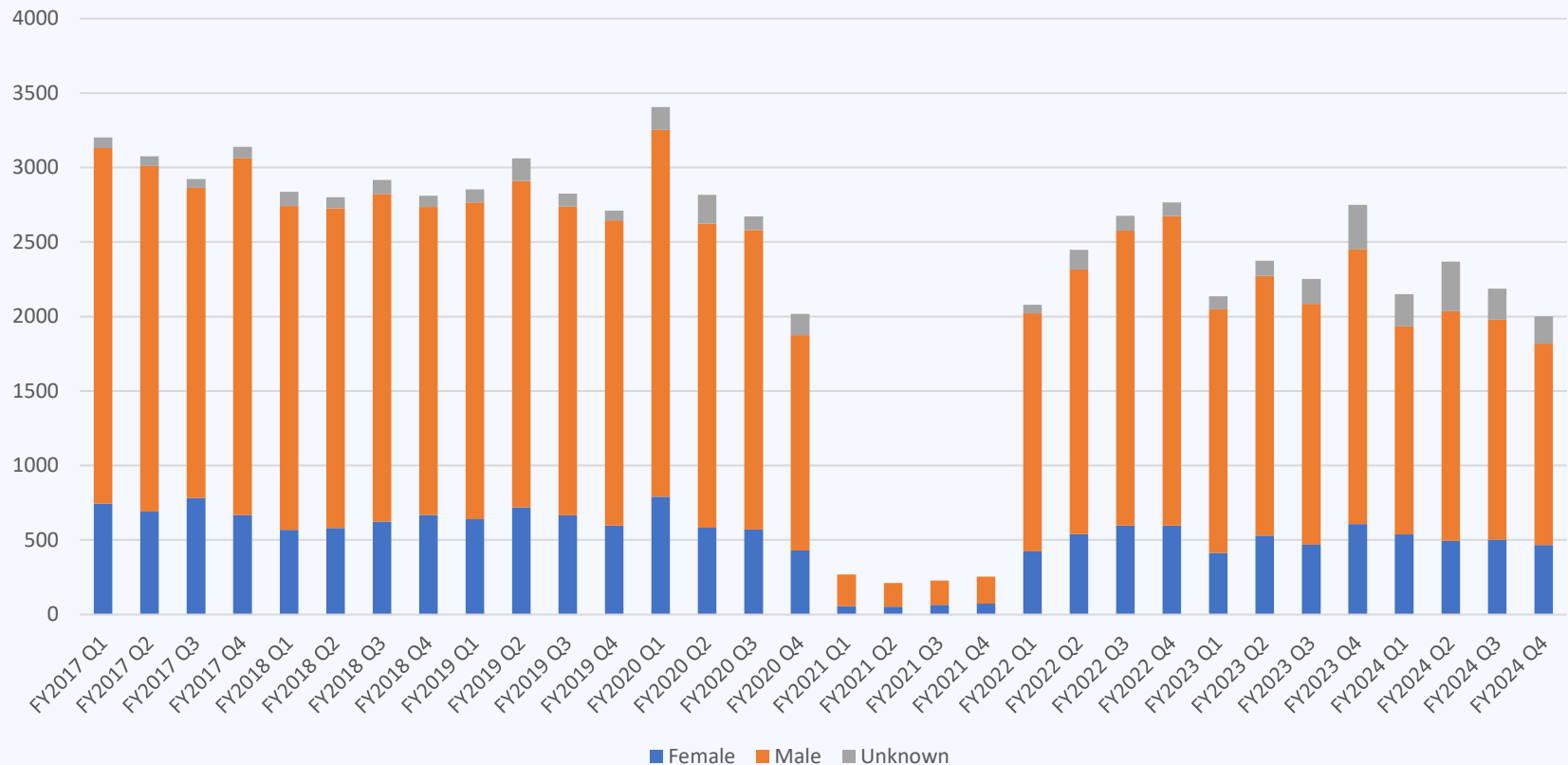


Total number of juvenile offender filings by race

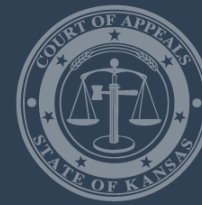




Total number of juvenile offender filings by gender



Kansas Judicial Branch



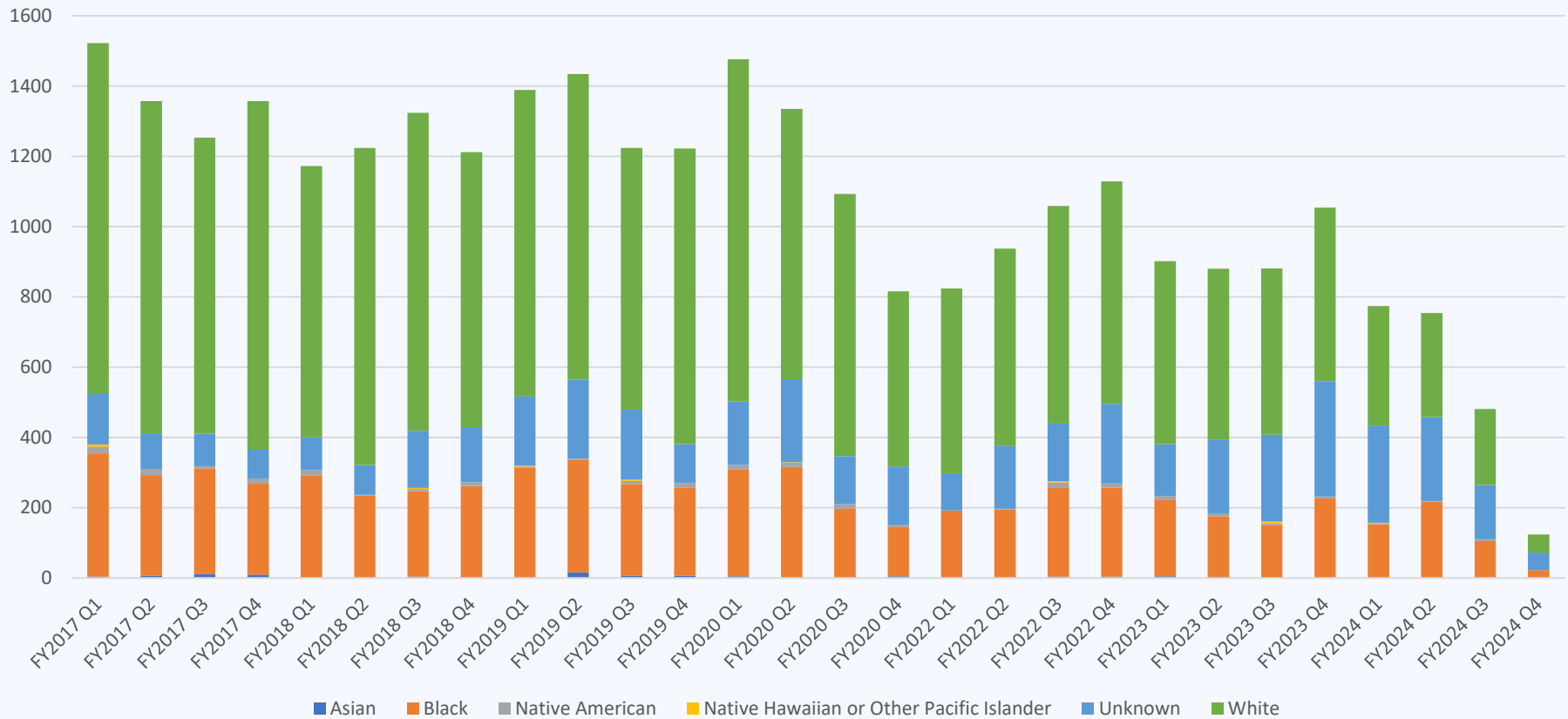
Total number of juvenile offender filings by offense type

| | FY2022 Q1 | FY2022 Q2 | FY2022 Q3 | FY2022 Q4 | FY2023 Q1 | FY2023 Q2 | FY2023 Q3 | FY2023 Q4 | FY2024 Q1 | FY2024 Q2 | FY2024 Q3 | FY2024 Q4 |
|-----------------------------------|-----------|-----------|-----------|-----------|-----------|-----------|-----------|-----------|-----------|-----------|-----------|-----------|
| Felony | 1 | 2 | 1 | 1 | 2 | 5 | 2 | 10 | 2 | 5 | 5 | 3 |
| Felony Drug 1 | | | 1 | | | 1 | 1 | 2 | | | | |
| Felony Drug 2 | 3 | 1 | | | 1 | 6 | 4 | 9 | | 2 | | 2 |
| Felony Drug 3 | 9 | 6 | 6 | 8 | 7 | 15 | 8 | 7 | 15 | 10 | 7 | 16 |
| Felony Drug 4 | 4 | 5 | 8 | 12 | 5 | 9 | 9 | 6 | 11 | 8 | 10 | 3 |
| Felony Drug 5 | 19 | 19 | 17 | 36 | 19 | 17 | 14 | 24 | 10 | 22 | 19 | 14 |
| Felony Level 1 | 33 | 25 | 51 | 35 | 50 | 26 | 32 | 55 | 46 | 45 | 29 | 40 |
| Felony Level 10 | 11 | 12 | 15 | 17 | 25 | 13 | 12 | 22 | 8 | 13 | 20 | 11 |
| Felony Level 2 | 8 | 4 | | 1 | | | 3 | 1 | 4 | 3 | 2 | |
| Felony Level 3 | 50 | 50 | 61 | 92 | 50 | 66 | 60 | 74 | 68 | 38 | 26 | 53 |
| Felony Level 4 | 29 | 22 | 33 | 30 | 22 | 9 | 13 | 26 | 13 | 24 | 21 | 25 |
| Felony Level 5 | 68 | 57 | 33 | 62 | 71 | 52 | 68 | 79 | 50 | 48 | 63 | 51 |
| Felony Level 6 | 19 | 17 | 24 | 12 | 11 | 16 | 17 | 19 | 23 | 29 | 16 | 9 |
| Felony Level 7 | 109 | 184 | 124 | 161 | 121 | 134 | 144 | 171 | 123 | 150 | 143 | 120 |
| Felony Level 8 | 34 | 39 | 51 | 38 | 45 | 38 | 45 | 38 | 52 | 34 | 28 | 23 |
| Felony Level 9 | 206 | 291 | 344 | 418 | 245 | 222 | 225 | 314 | 232 | 326 | 276 | 280 |
| Felony Non-Grid | 3 | 1 | 1 | | | 3 | 1 | | | 8 | | 1 |
| Felony Off Grid | 7 | 1 | 5 | 7 | 6 | 4 | 2 | 4 | 5 | 6 | 17 | 4 |
| Felony Unclassified Infraction | 4 | 2 | 11 | 7 | 1 | | 1 | 1 | 13 | 7 | 2 | 1 |
| | 67 | 49 | 71 | 74 | 66 | 72 | 91 | 97 | 79 | 58 | 78 | 69 |
| Misdemeanor | | | | | 2 | | 2 | 2 | 2 | 1 | 2 | |
| Misdemeanor Class A | 426 | 477 | 527 | 449 | 405 | 485 | 409 | 502 | 361 | 427 | 383 | 360 |
| Misdemeanor Class B | 767 | 958 | 1051 | 1038 | 787 | 981 | 840 | 1041 | 823 | 892 | 823 | 726 |
| Misdemeanor Class C | 182 | 203 | 214 | 250 | 171 | 189 | 223 | 222 | 189 | 198 | 203 | 175 |
| Misdemeanor Unclassified | 13 | 13 | 23 | 18 | 22 | 11 | 23 | 23 | 19 | 15 | 15 | 15 |

Kansas Judicial Branch



Total number of juvenile offender adjudications by race



Kansas Judicial Branch



Total number of juvenile offender adjudications by gender



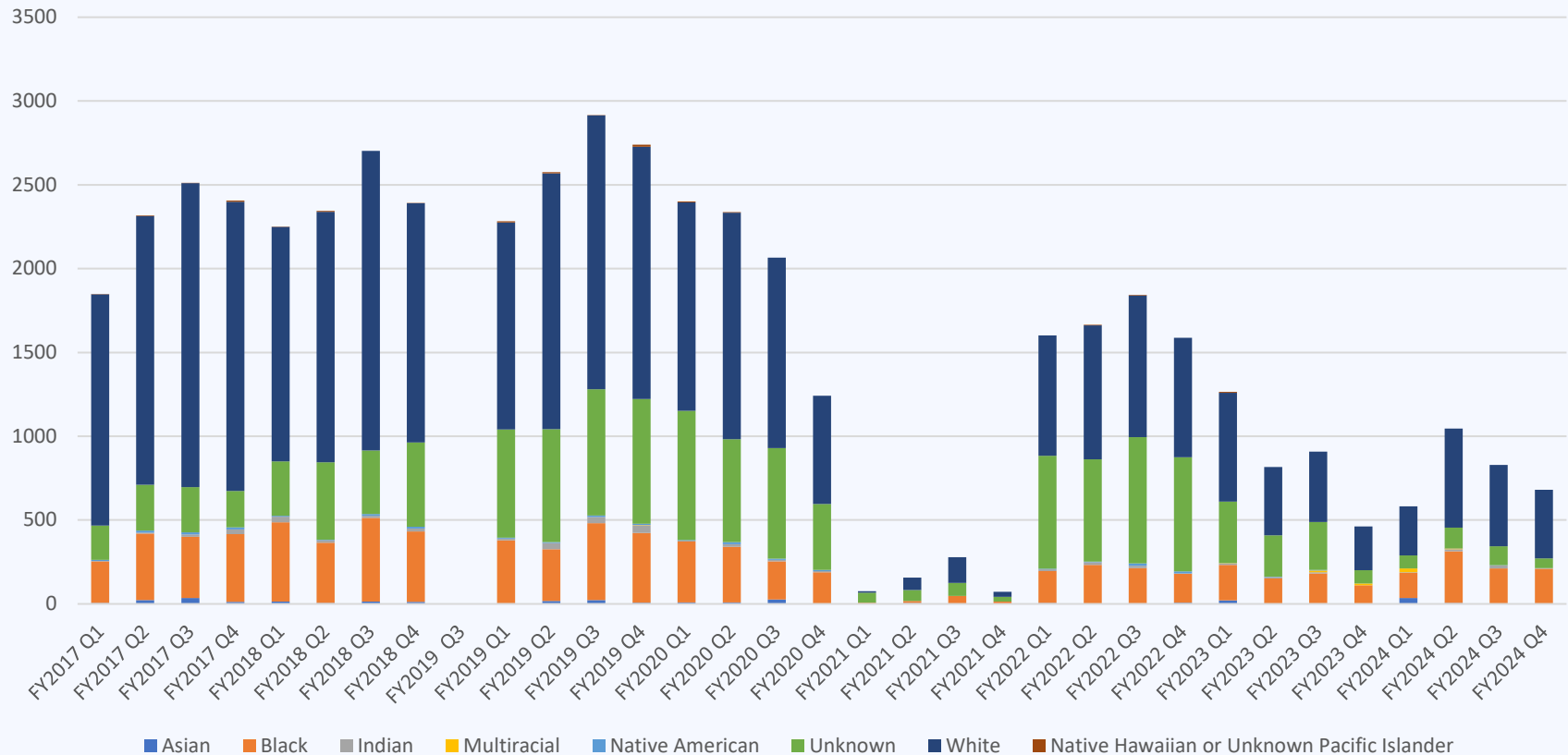


Total number of juvenile offender adjudications by offense

| | FY2022 Q1 | FY2022 Q2 | FY2022 Q3 | FY2022 Q4 | FY2023 Q1 | FY2023 Q2 | FY2023 Q3 | FY2023 Q4 | FY2024 Q1 | FY2024 Q2 | FY2024 Q3 | FY2024 Q4 |
|--------------------------|-----------|-----------|-----------|-----------|-----------|-----------|-----------|-----------|-----------|-----------|-----------|-----------|
| Felony | | | 2 | 1 | | | 2 | 2 | 8 | 1 | 1 | 3 |
| Felony Drug 1 | | | 1 | | | | | 1 | 2 | | | |
| Felony Drug 2 | 2 | | | | | | 3 | 1 | 4 | | 1 | |
| Felony Drug 3 | 4 | 5 | 2 | 3 | 2 | 10 | 6 | 2 | 10 | 5 | 2 | |
| Felony Drug 4 | 2 | 3 | 3 | 5 | 4 | 7 | 5 | 5 | 1 | 3 | 2 | |
| Felony Drug 5 | 13 | 12 | 5 | 22 | 11 | 9 | 9 | 12 | 8 | 9 | 4 | |
| Felony Level 1 | 8 | 4 | 23 | 15 | 27 | 5 | 13 | 16 | 11 | 2 | 1 | 1 |
| Felony Level 10 | 6 | 7 | 5 | 11 | 20 | 4 | 5 | 5 | 3 | 2 | 1 | 1 |
| Felony Level 2 | 3 | 2 | | 1 | | | | | 1 | | | |
| Felony Level 3 | 27 | 37 | 33 | 67 | 33 | 30 | 37 | 31 | 30 | 8 | | 1 |
| Felony Level 4 | 17 | 1 | 10 | 9 | 7 | 4 | 4 | 8 | 4 | 10 | | 2 |
| Felony Level 5 | 45 | 41 | 22 | 39 | 45 | 25 | 38 | 51 | 25 | 11 | 3 | 3 |
| Felony Level 6 | 3 | 9 | 14 | 10 | 8 | 1 | 10 | 8 | 5 | 6 | 2 | |
| Felony Level 7 | 52 | 96 | 55 | 89 | 72 | 59 | 74 | 90 | 51 | 53 | 45 | 4 |
| Felony Level 8 | 16 | 19 | 18 | 17 | 22 | 22 | 22 | 17 | 21 | 7 | 2 | |
| Felony Level 9 | 92 | 122 | 162 | 176 | 149 | 88 | 91 | 134 | 96 | 124 | 72 | 23 |
| Felony Non-Grid | 1 | | 1 | | | | | | | | 1 | |
| Felony Off Grid | | | 2 | 1 | 3 | | | | 2 | 1 | 1 | |
| Felony Unclassified | 1 | 1 | 4 | 4 | 1 | | 1 | 1 | 11 | 5 | 1 | |
| Infraction | 32 | 22 | 23 | 25 | 23 | 34 | 47 | 48 | 31 | 20 | 26 | 8 |
| Misdemeanor | | | | | 1 | | | | 1 | 2 | 1 | 1 |
| Misdemeanor Class A | 169 | 182 | 231 | 188 | 153 | 192 | 146 | 184 | 143 | 138 | 96 | 21 |
| Misdemeanor Class B | 263 | 294 | 361 | 360 | 255 | 310 | 269 | 324 | 246 | 274 | 173 | 49 |
| Misdemeanor Class C | 62 | 73 | 80 | 82 | 61 | 70 | 96 | 91 | 67 | 67 | 44 | 10 |
| Misdemeanor Unclassified | 4 | 4 | 4 | 5 | 5 | 5 | 4 | 9 | 7 | 5 | 3 | 1 |



Total number of CINC filings by race





Total number of CINC filings by gender





Total number of CINC filings by cause

| | FY2022 Q1 | FY2022 Q2 | FY2022 Q3 | FY2022 Q4 | FY2023 Q1 | FY2023 Q2 | FY2023 Q3 | FY2023 Q4 | FY2024 Q1 | FY2024 Q2 | FY2024 Q3 | FY2024 Q4 |
|--|-----------|-----------|-----------|-----------|-----------|-----------|-----------|-----------|-----------|-----------|-----------|-----------|
| 38-2202(d)(1) Without adequate parental care, control or sub | 473 | 423 | 490 | 487 | 534 | 341 | 451 | 463 | 373 | 506 | 442 | 435 |
| 38-2202(d)(10) Absent at least a 2nd time from Court Order | 10 | 2 | 3 | 2 | 2 | 3 | 2 | 2 | 3 | 5 | 1 | 1 |
| 38-2202(d)(11) Residing with person who has been abused | 118 | 68 | 108 | 101 | 80 | 66 | 86 | 112 | 120 | 158 | 126 | 139 |
| 38-2202(d)(12) Committed offense defined in 21-6301(e)(14) | | | | 4 | | | | | | | | |
| 38-2202(d)(13) Permanent custodian no longer able or willing | 4 | 3 | | 1 | 3 | 1 | 4 | 5 | 1 | 1 | | |
| 38-2202(d)(14) Subjected to act of Human Trafficking or comm | | | | 1 | 1 | | | 2 | 1 | 2 | | 1 |
| 38-2202(d)(2) Without care or control necessary for child's | 505 | 436 | 504 | 485 | 550 | 356 | 493 | 471 | 411 | 520 | 454 | 460 |
| 38-2202(d)(3) Has been physically, mentally or emotionally a | 329 | 215 | 279 | 262 | 327 | 198 | 260 | 264 | 275 | 373 | 318 | 312 |
| 38-2202(d)(4) Place for care or adoption in violation of law | 2 | | | | 2 | | | 3 | 1 | | | |
| 38-2202(d)(5) Abandoned or does not have a known living pare | 25 | 22 | 12 | 19 | 37 | 12 | 28 | 20 | 19 | 24 | 11 | 24 |
| 38-2202(d)(6) Not attending school as required | 225 | 321 | 454 | 343 | 113 | 298 | 587 | 242 | 103 | 386 | 509 | 226 |
| 38-2202(d)(7) Minor committed act prohibited by state law | | | | | | | | | | | | 1 |
| 38-2202(d)(8) Less than 10 yrs of age, committed adult Felon | 4 | 2 | | 5 | | 3 | 2 | 2 | | 2 | 1 | 5 |
| 38-2202(d)(9) Voluntarily absent from home without consent | 47 | 50 | 31 | 43 | 43 | 29 | 42 | 40 | 24 | 45 | 46 | 42 |



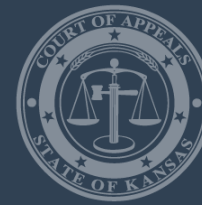
Total number of youth ordered to probation by race, gender, offense type





Total number of youth ordered to court services by risk level





Average length of probation by race, gender, offense type





Average length of supervision for youth receiving EDC by race, gender, offense type





Total number of youth receiving EDC by race, gender, offense type

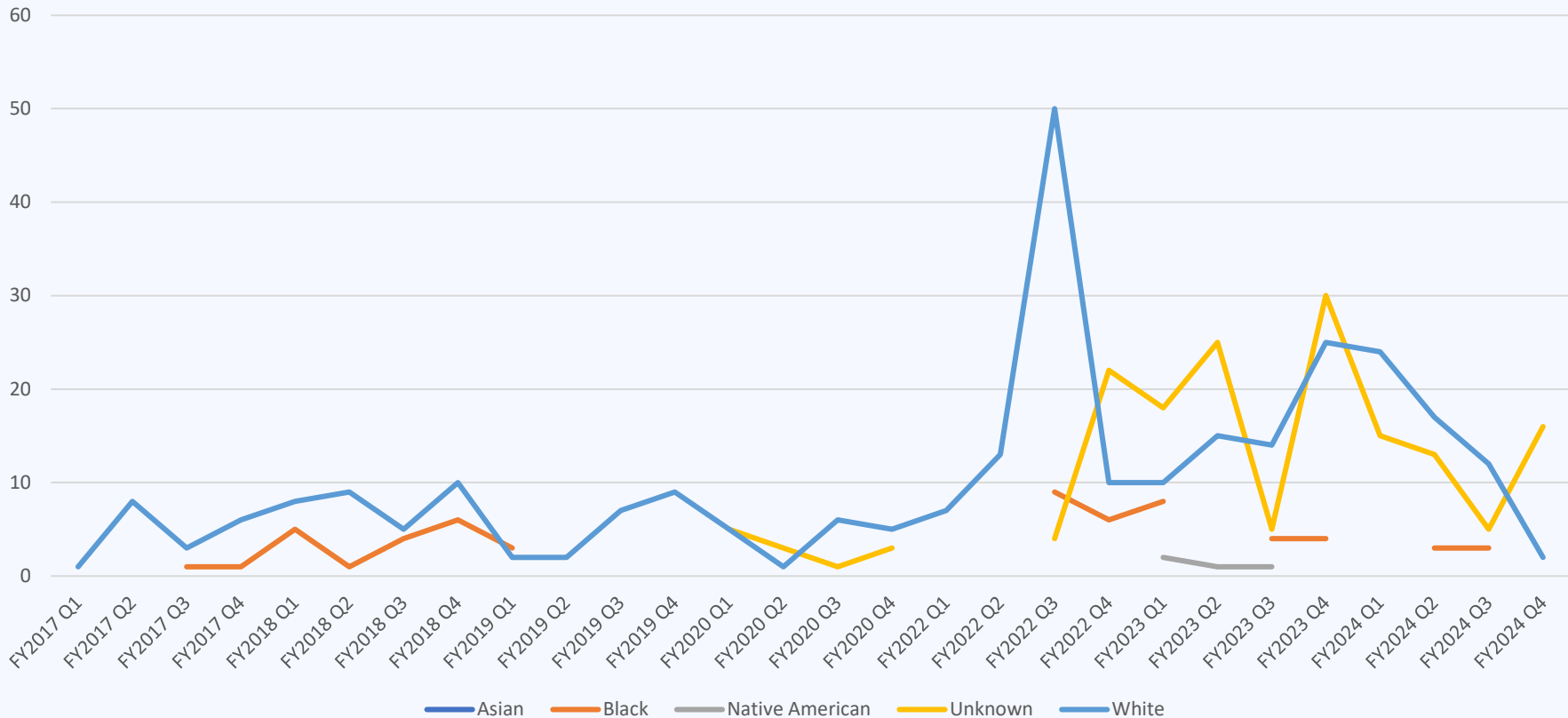




SB367 Performance Measures Phase 2

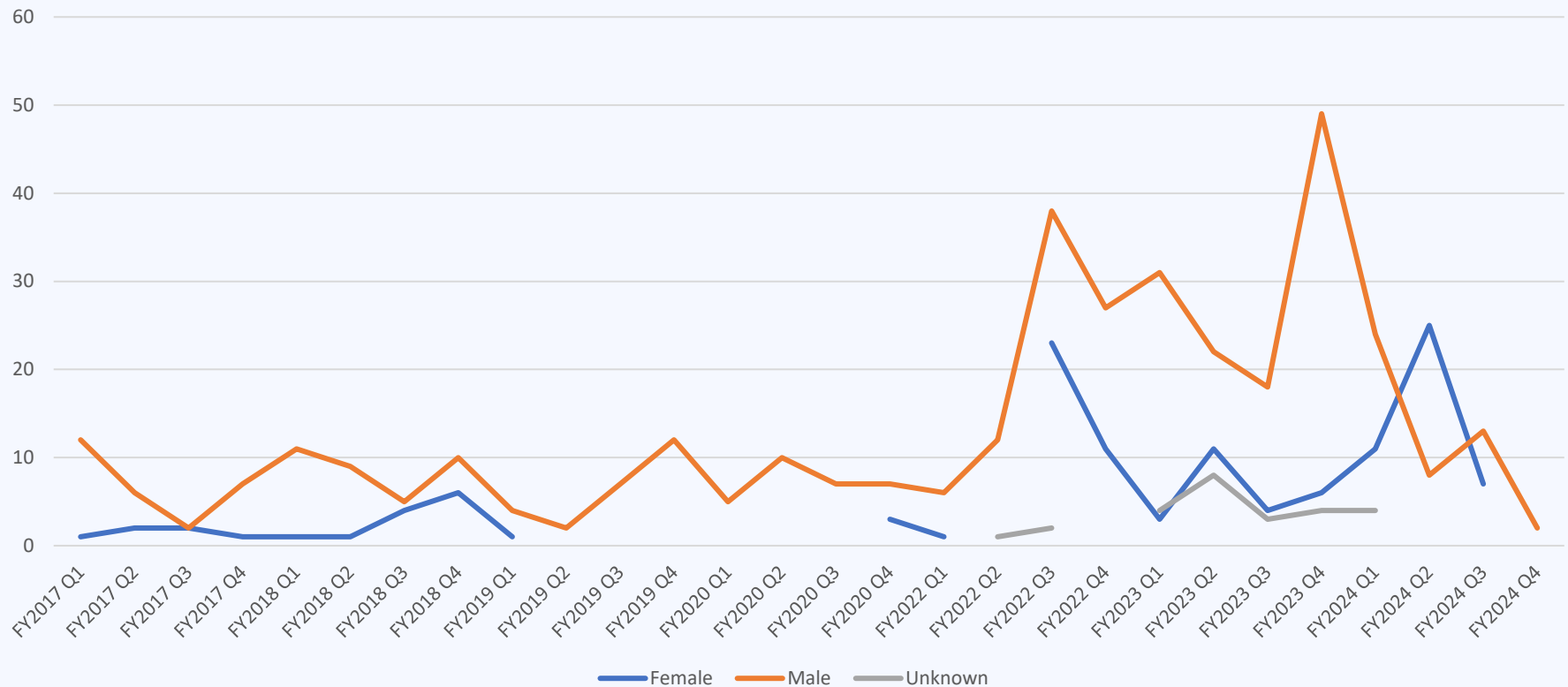


Number of cases transferred to the adult system by race



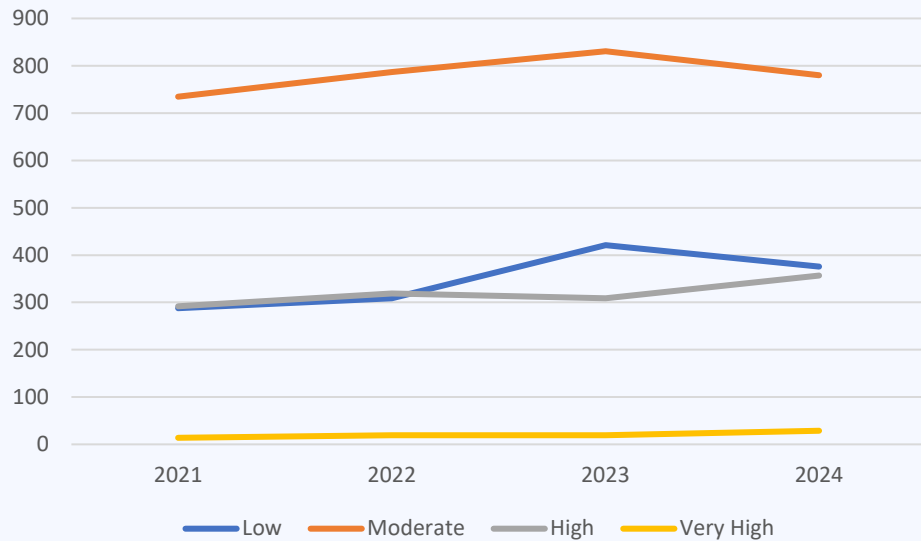


Number of cases transferred to the adult system by gender





Total number of YLS/CMI completed

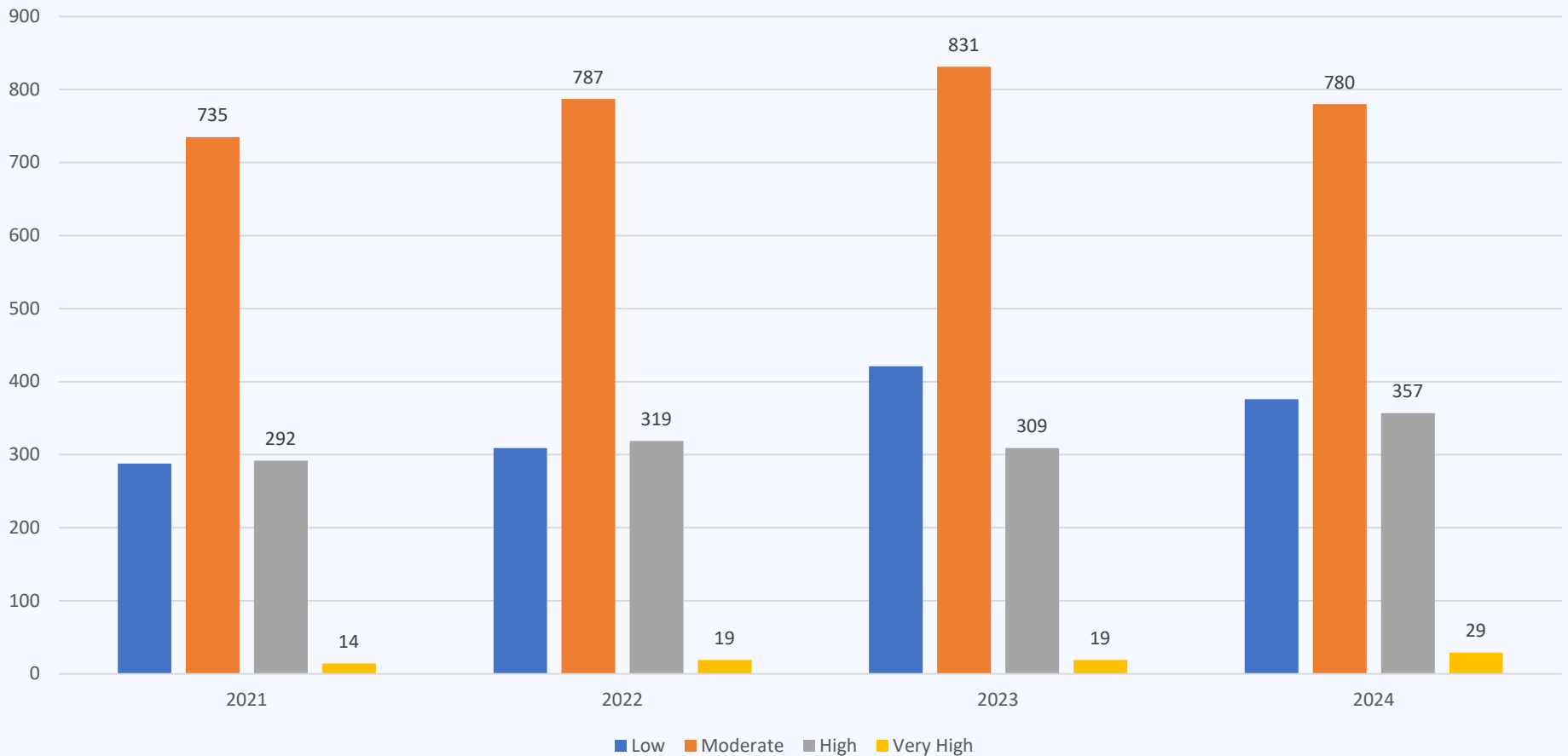


| | 2021 | 2022 | 2023 | 2024 |
|-----------|------|------|------|------|
| Low | 288 | 309 | 421 | 376 |
| Moderate | 735 | 787 | 831 | 780 |
| High | 292 | 319 | 309 | 357 |
| Very High | 14 | 19 | 19 | 29 |

Kansas Judicial Branch



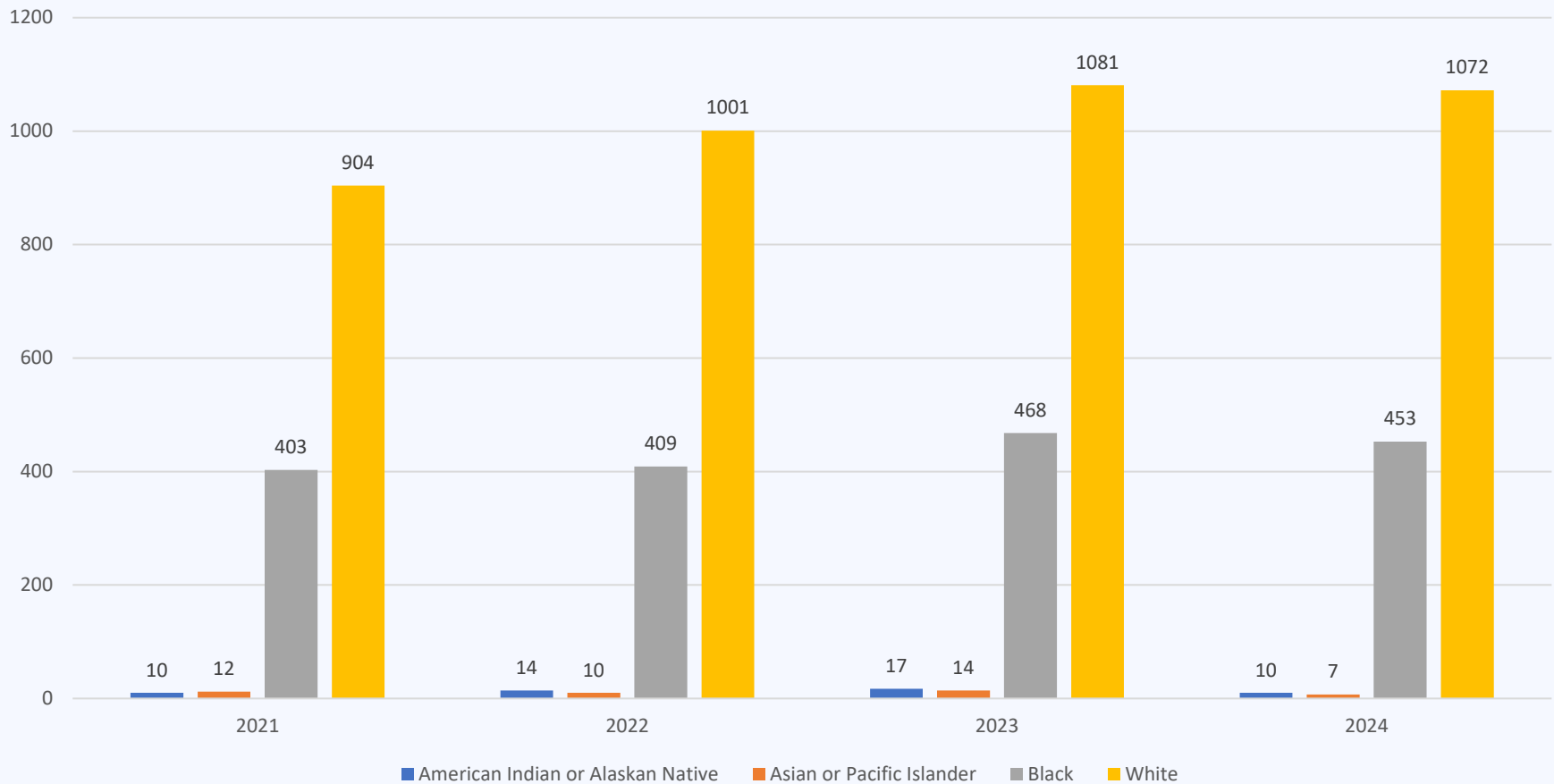
Total number of YLS/CMIs by risk level, (FY2021-FY2024)



Kansas Judicial Branch

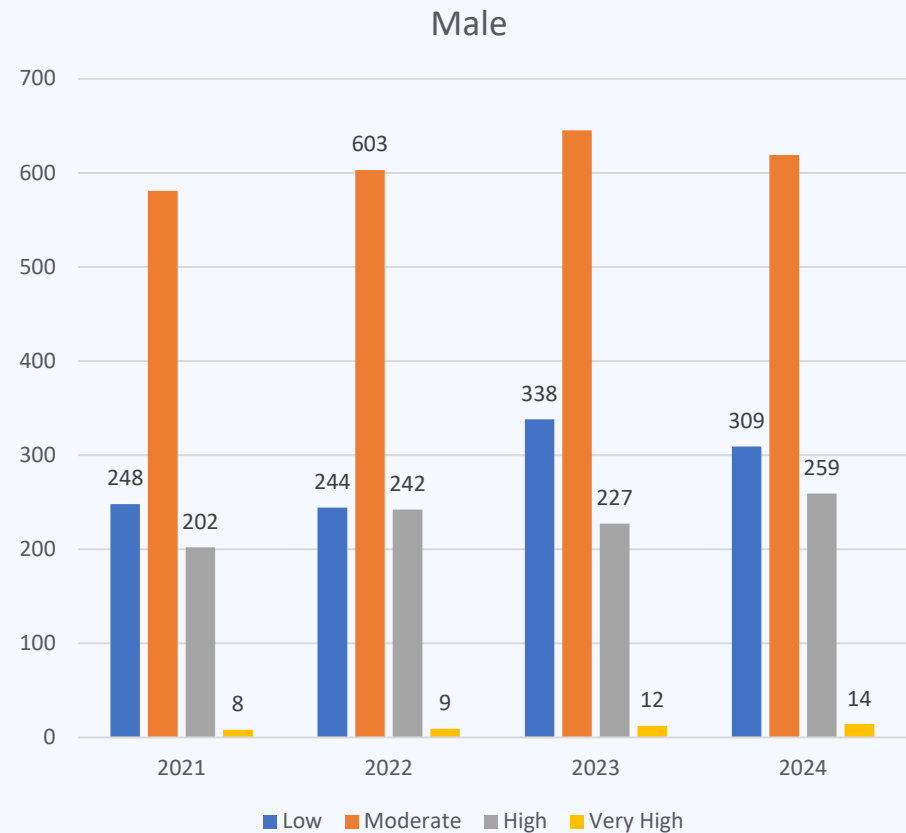
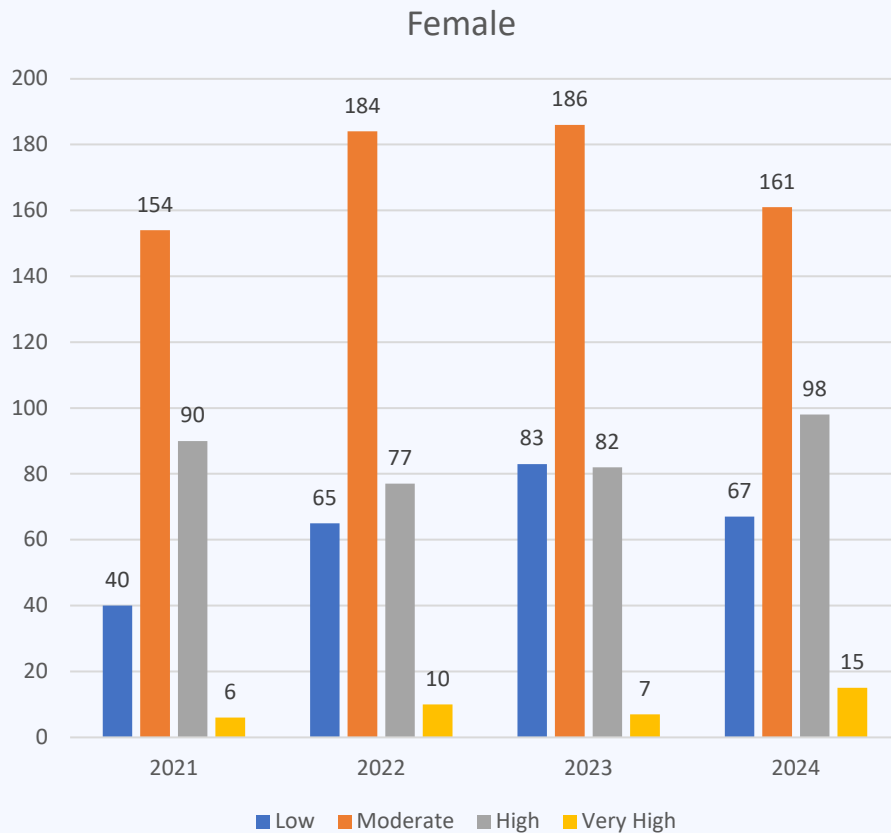


Total number of YLS/CMIs by race (FY2021-FY2024)





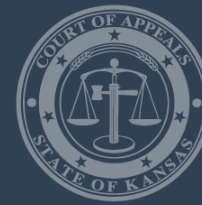
Total number of YLS/CMIs by gender (FY2021-FY2024)





Total number of EJJ filed by race, gender, offense type





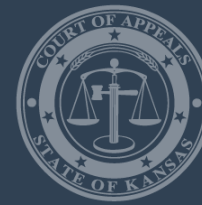
Total number of sanctions given by supervision type





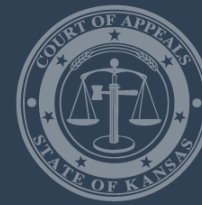
Total number of youth that received a behavior response by supervision type, race, gender





Total number of incentives given by supervision type





Total number of youth with subsequent adjudication within 24 months after successful diversion completion





Total number of youth supervised on probation who recidivated*





Total number of youth whose probation violation was reported to Court





Total number of youth that probation length was extended.





Total number of youth with successful/unsuccessful discharge from probation

