



# Juvenile Justice Oversight Committee

## Quarterly Data Presentation

1<sup>st</sup> Quarter 2025

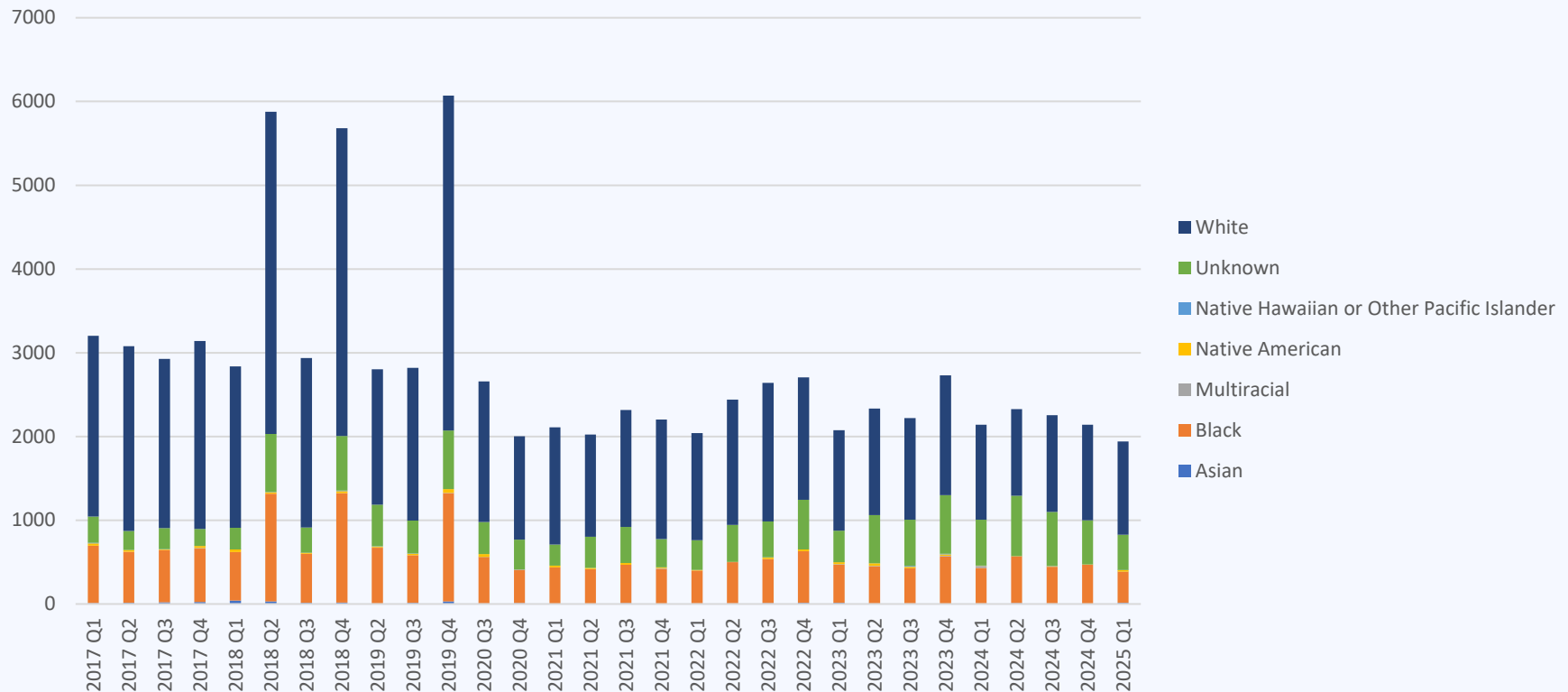
2016 - 2025



# SB367 Performance Measures Phase 1

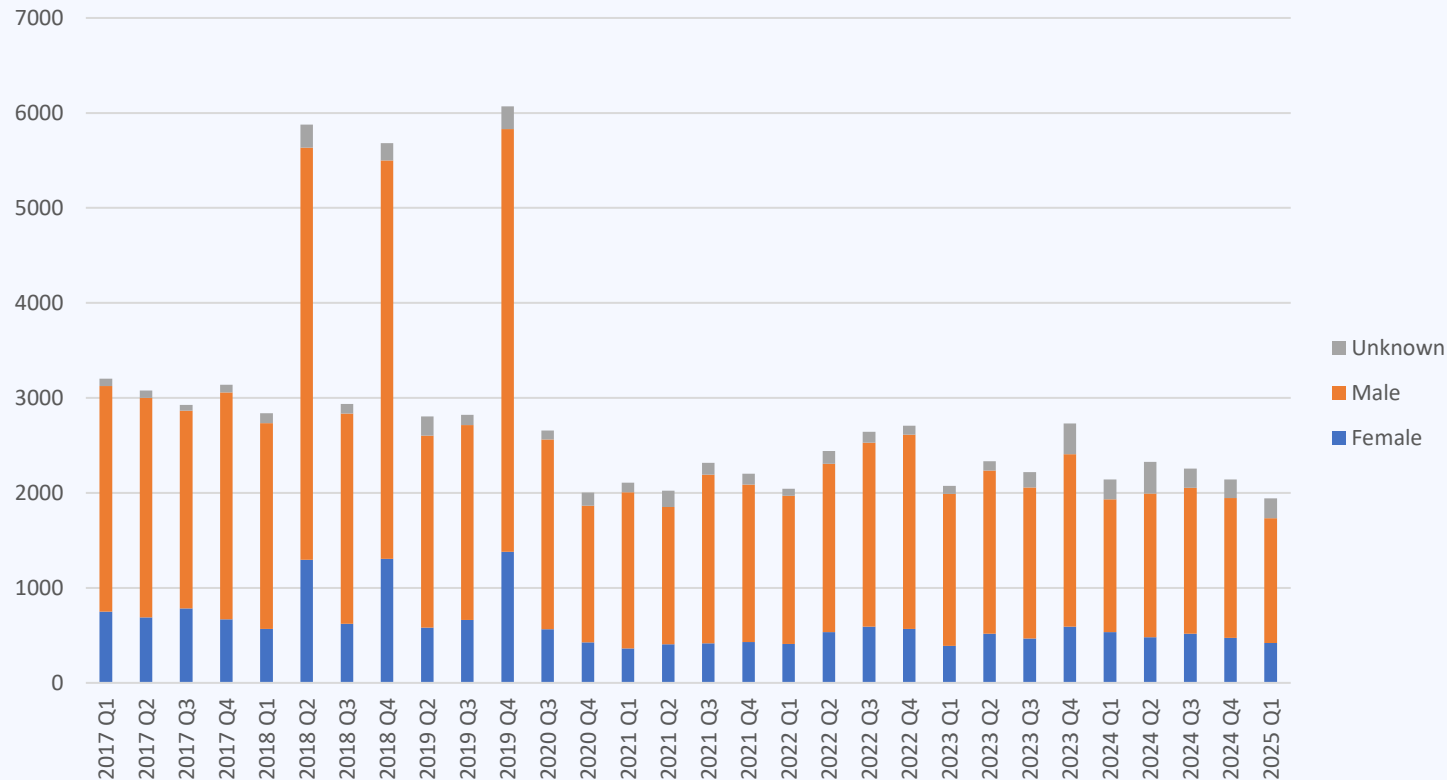


## Total number of juvenile offender filings by race





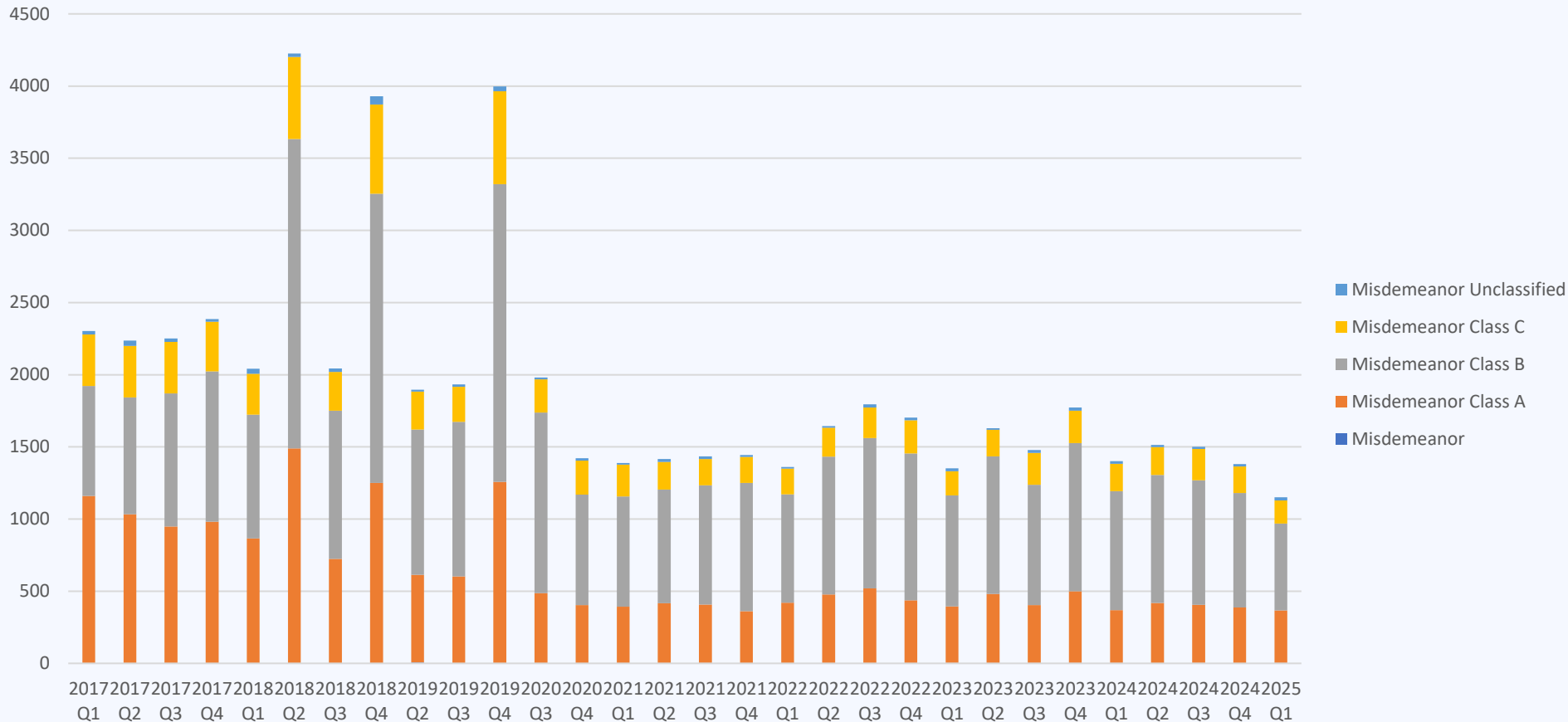
## Total number of juvenile offender filings by gender





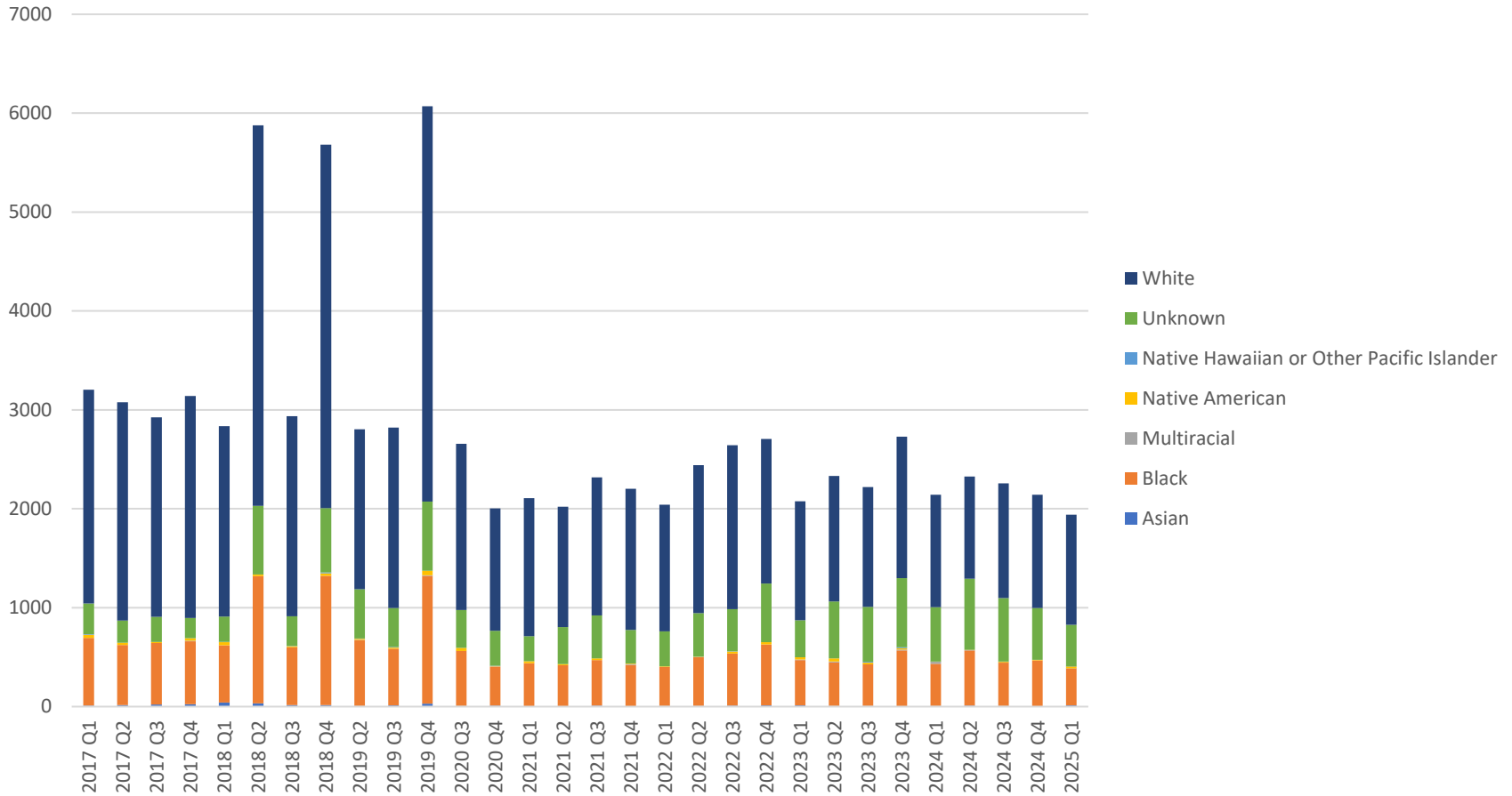


## Total number of juvenile offender filings by offense type - misdemeanor





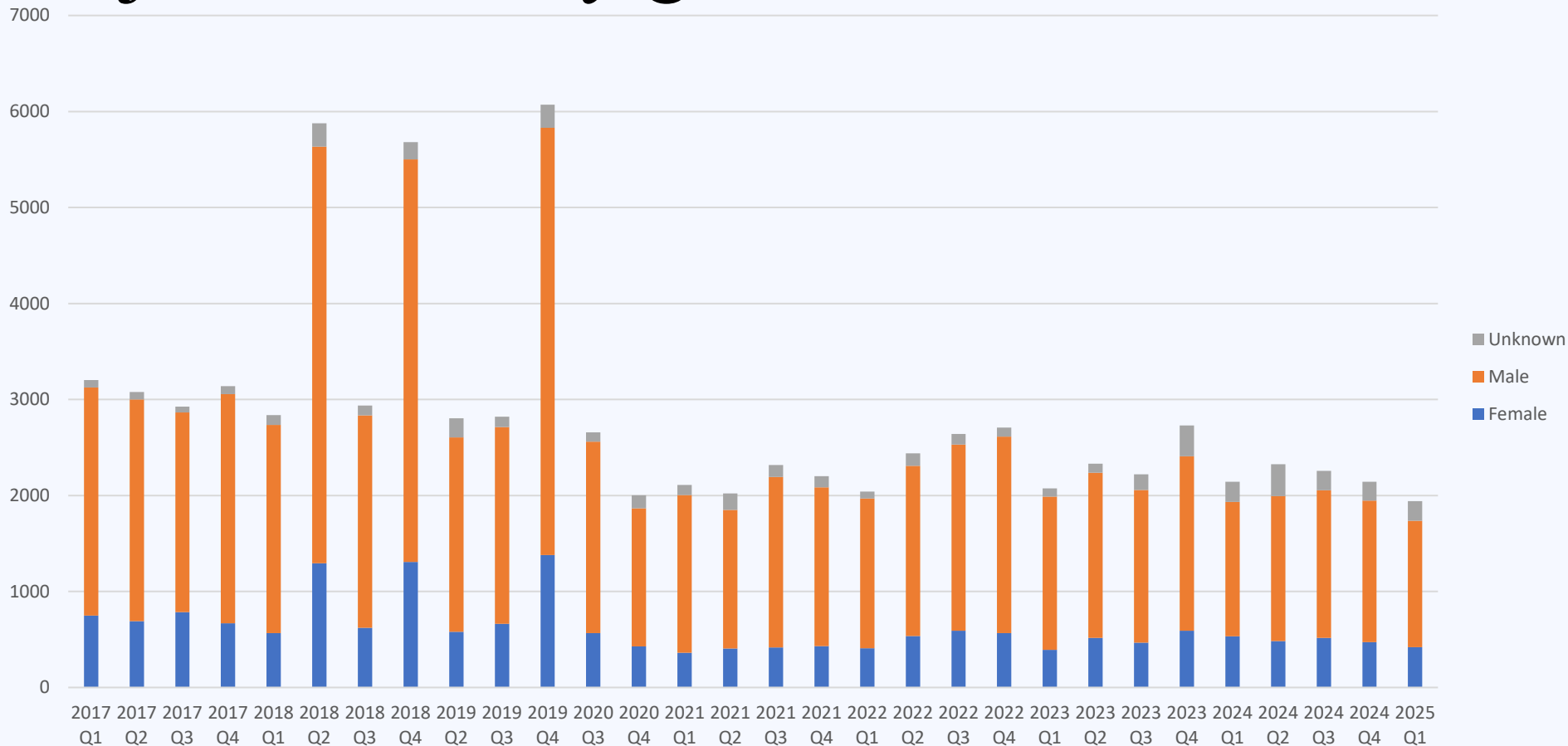
## Total number of juvenile offender adjudications by race



# Kansas Judicial Branch



## Total number of juvenile offender adjudications by gender

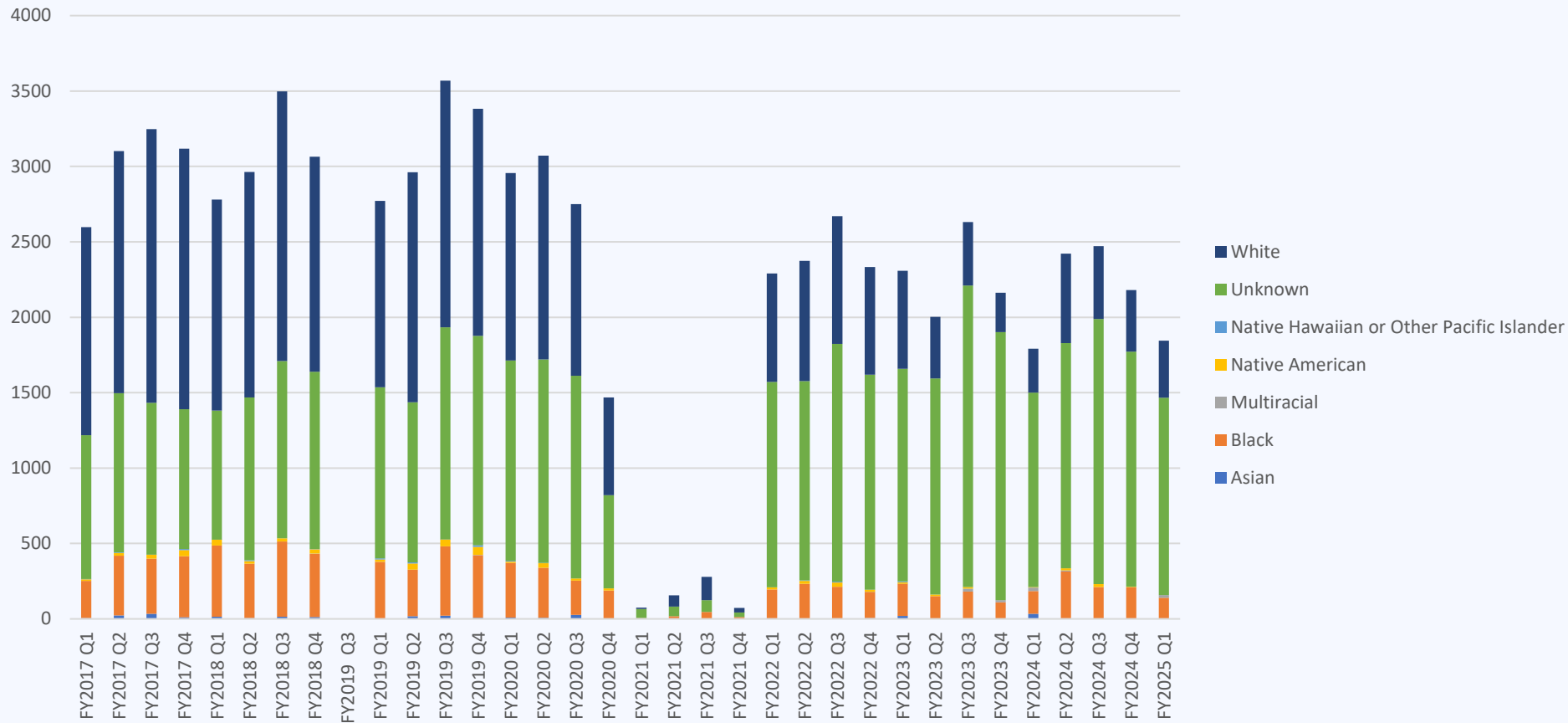








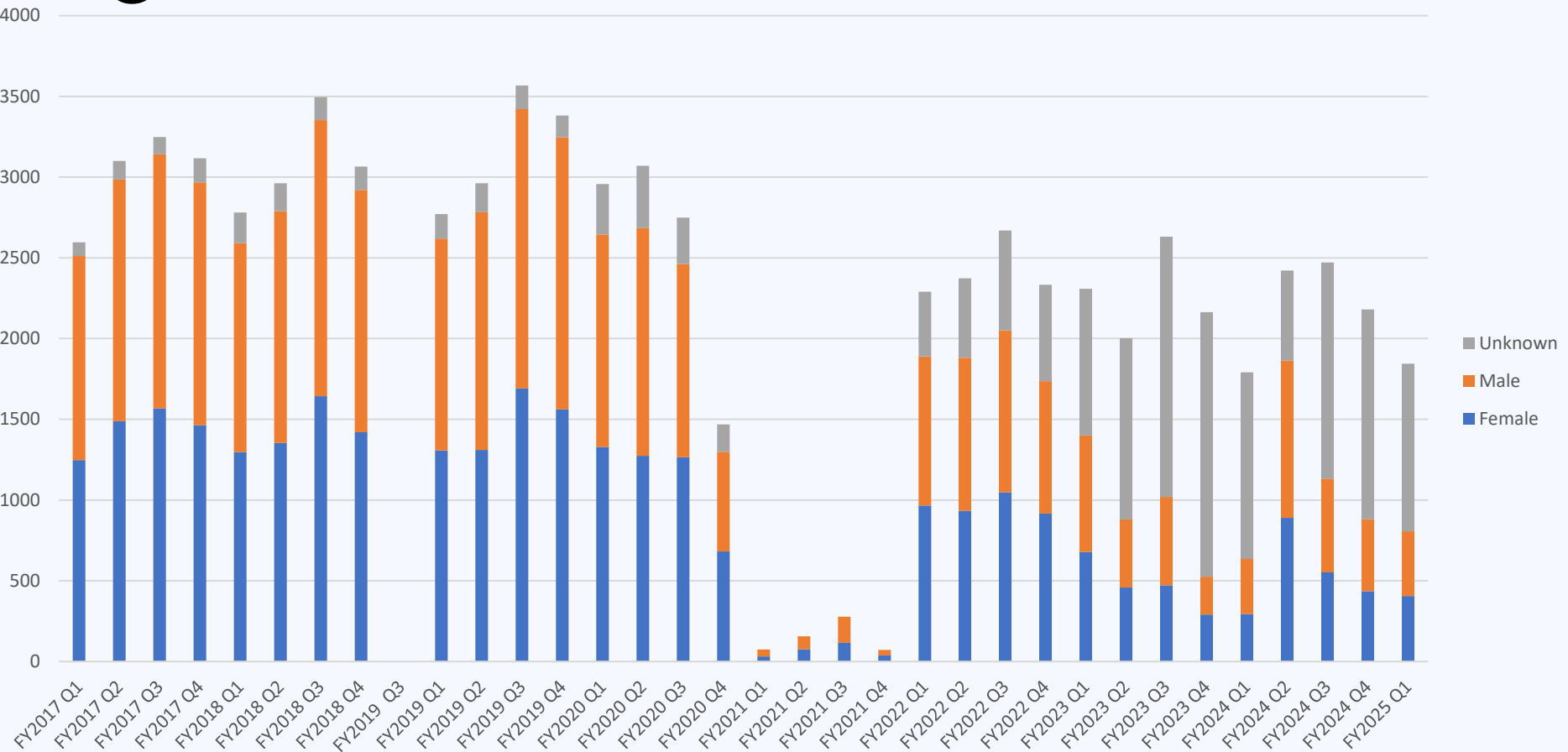
## Total number of CINC filings by race



# Kansas Judicial Branch

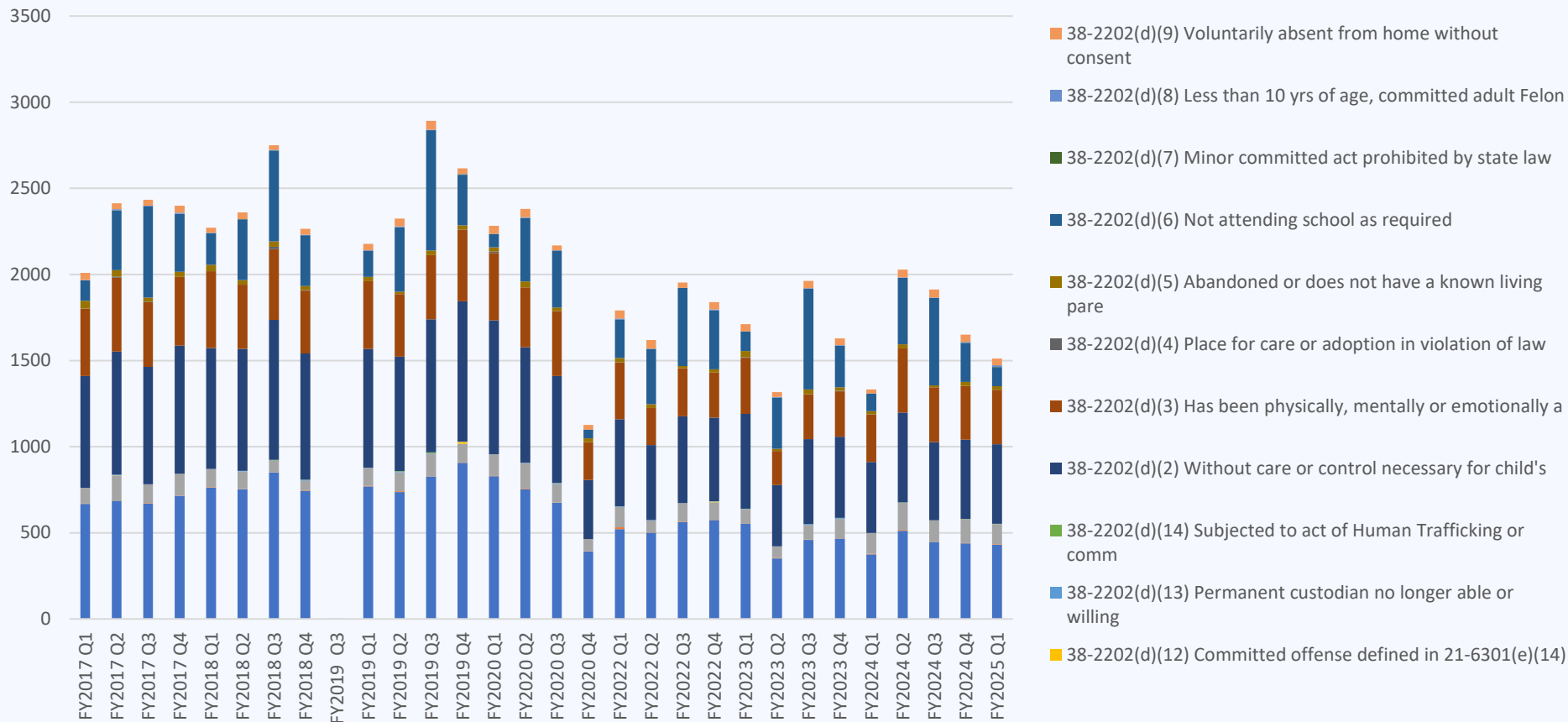


## Total number of CINC filings by gender





## Total number of CINC filings by cause





# Total number of youth ordered to probation by race, gender, offense type





# Total number of youth ordered to court services by risk level





# Average length of probation by race, gender, offense type





# Average length of supervision for youth receiving EDC by race, gender, offense type







# Total number of youth receiving EDC by race, gender, offense type

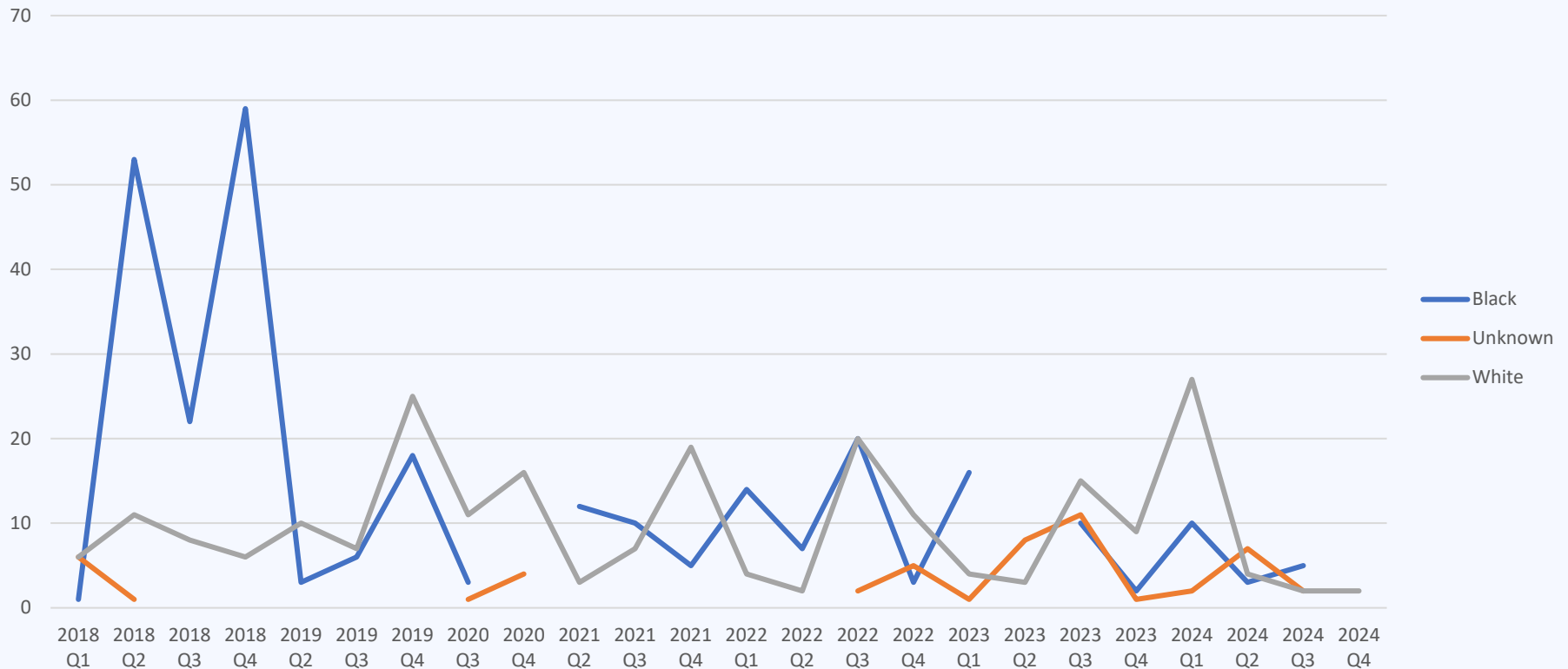




# SB367 Performance Measures Phase 2

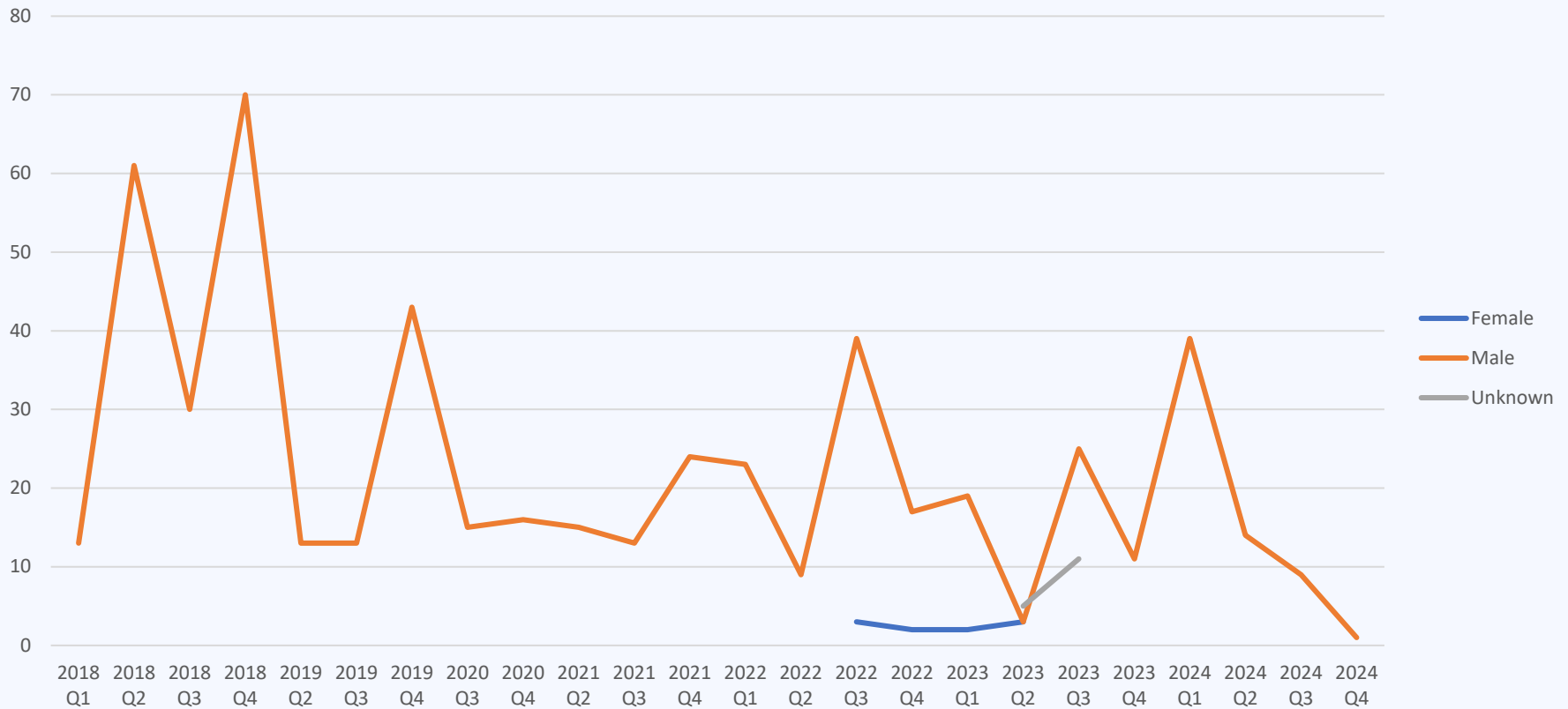


## Number of cases transferred to the adult system by race





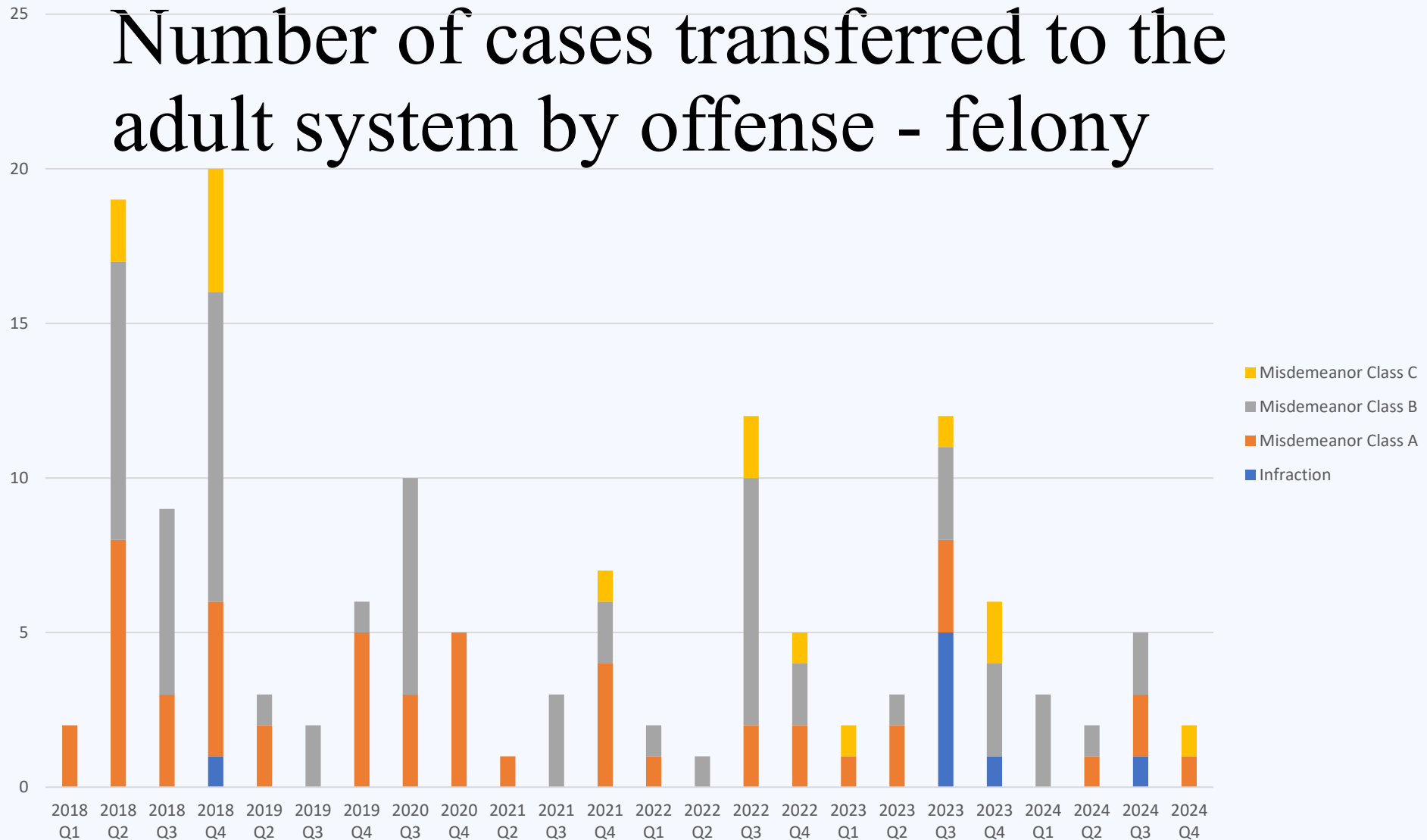
## Number of cases transferred to the adult system by gender



# Kansas Judicial Branch

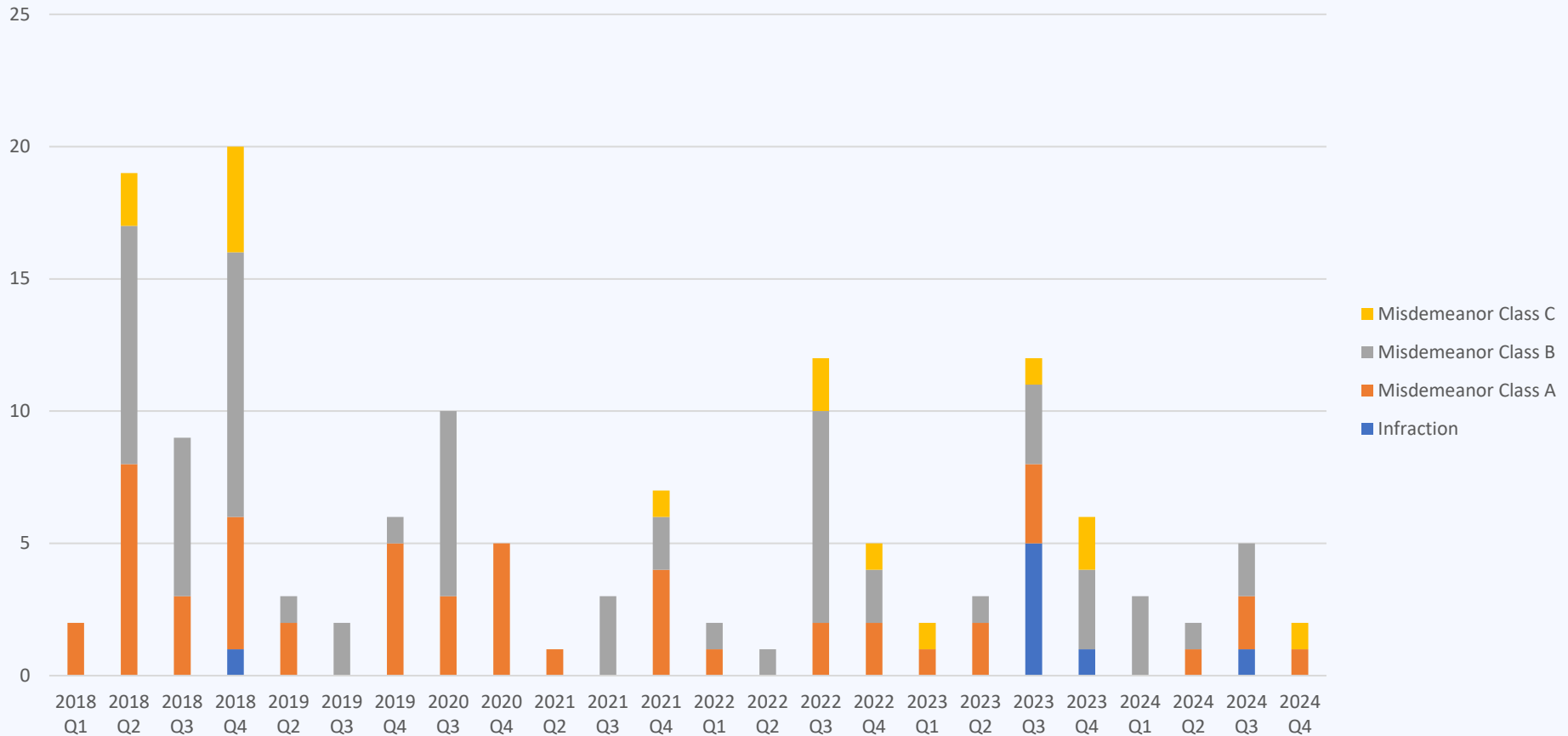


## Number of cases transferred to the adult system by offense - felony



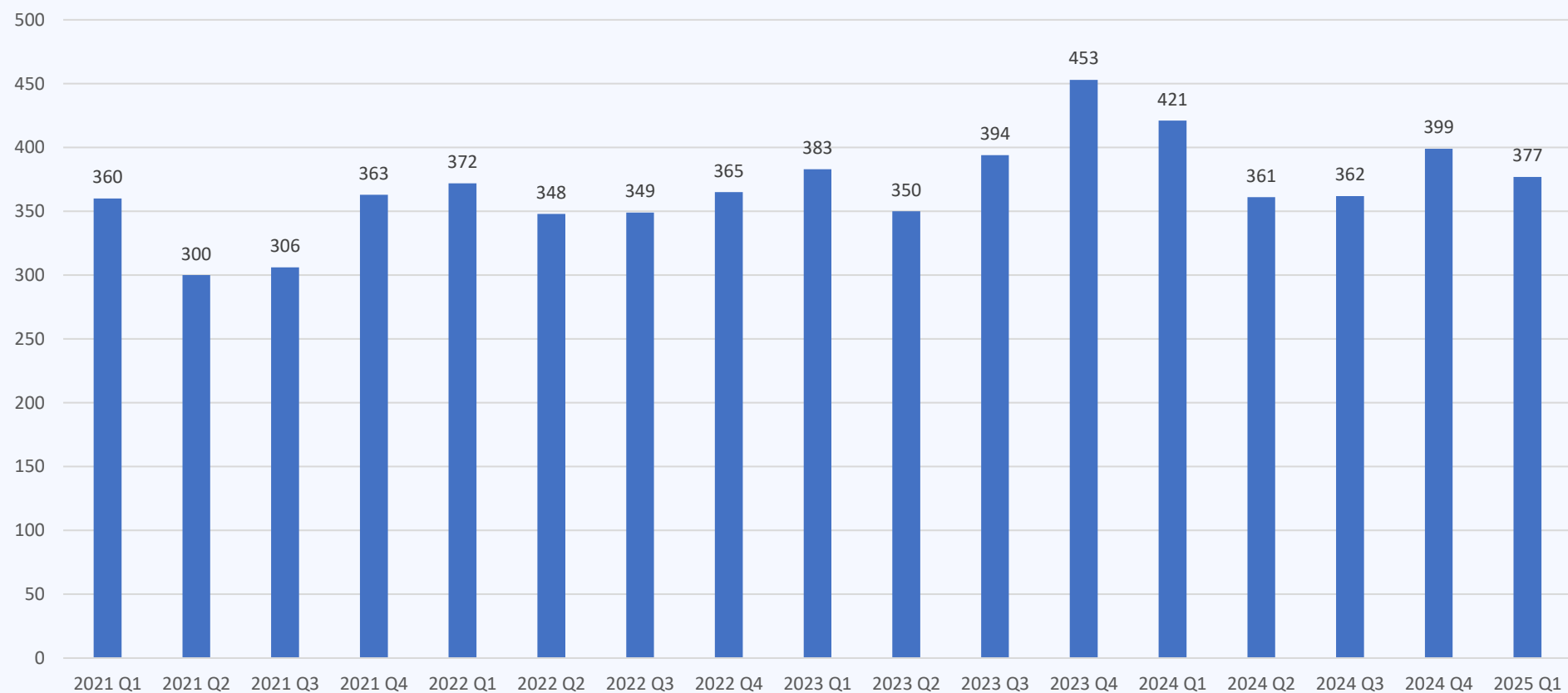


## Number of cases transferred to the adult system by offense - misdemeanor





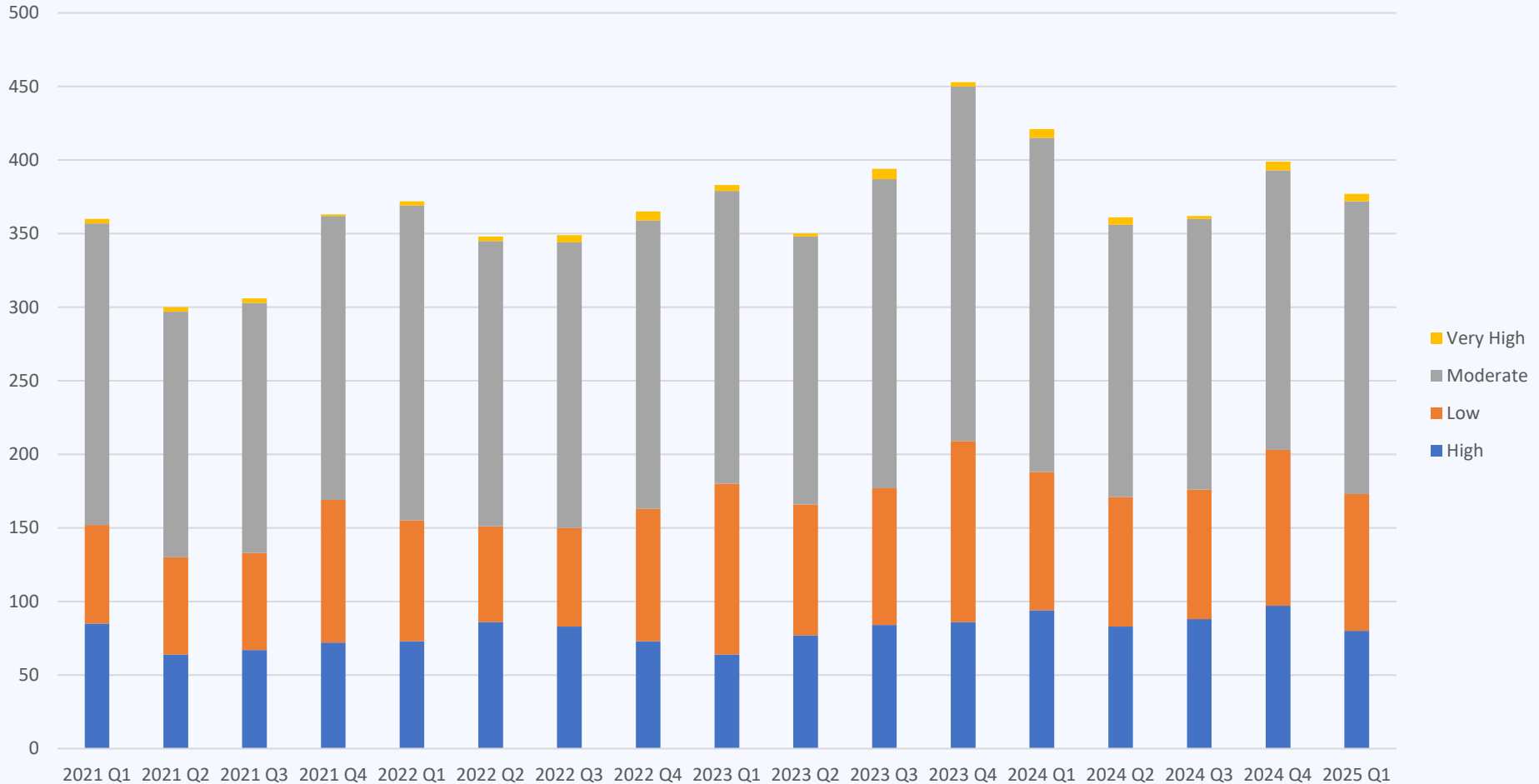
## Total number of YLS/CMI completed



# Kansas Judicial Branch



## Total number of YLS/CMIs by risk level

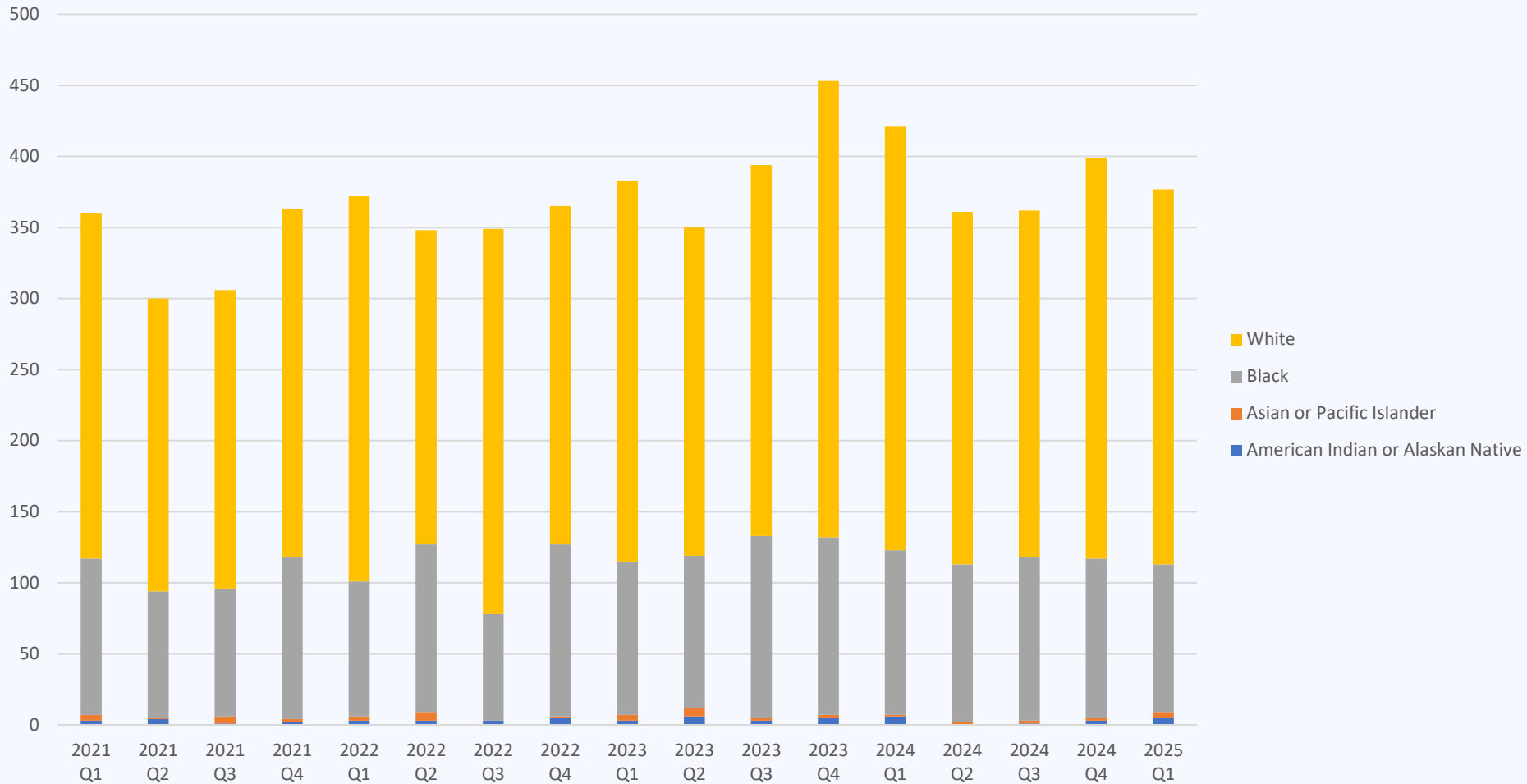




# Kansas Judicial Branch



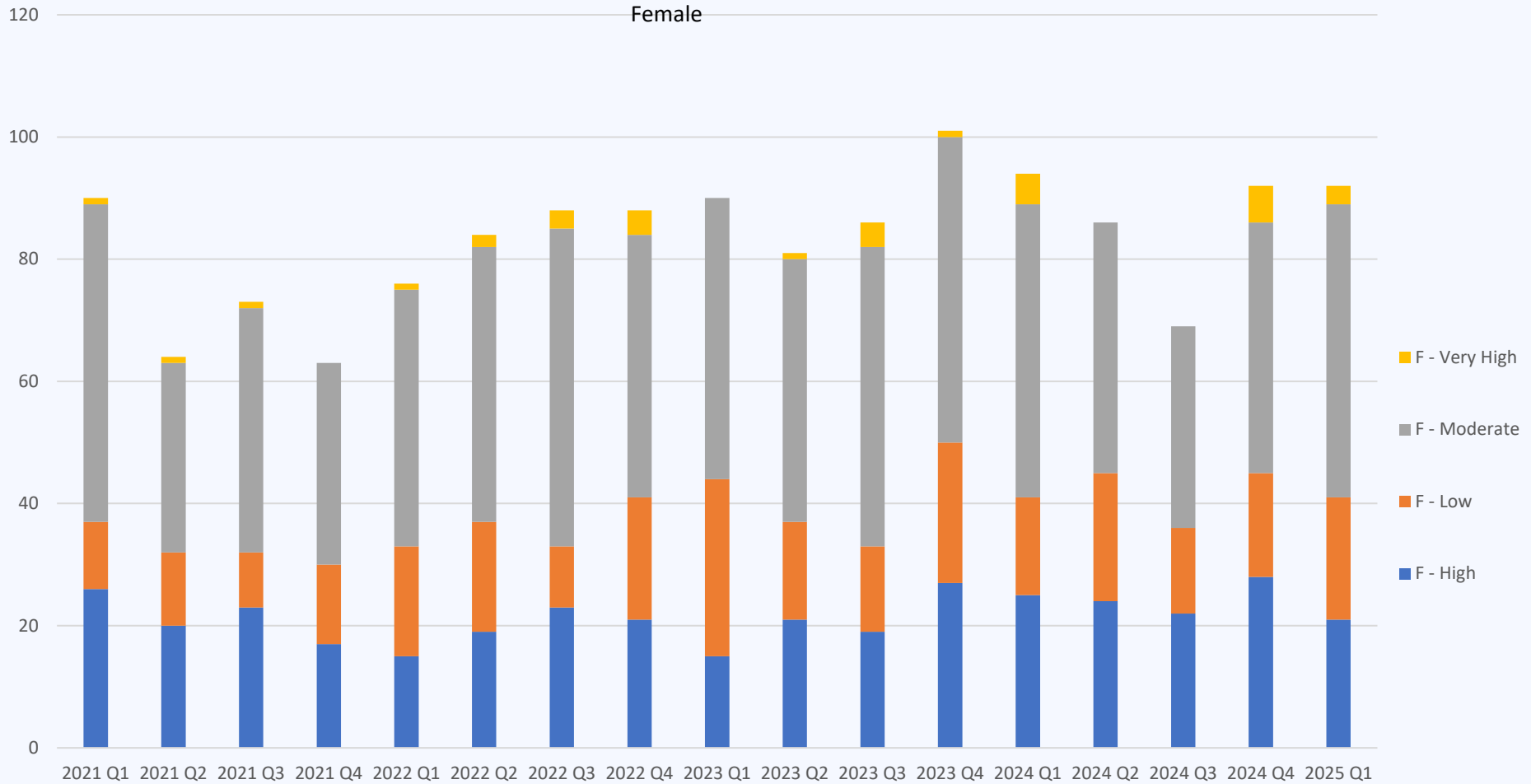
## Total number of YLS/CMIs by race



# Kansas Judicial Branch



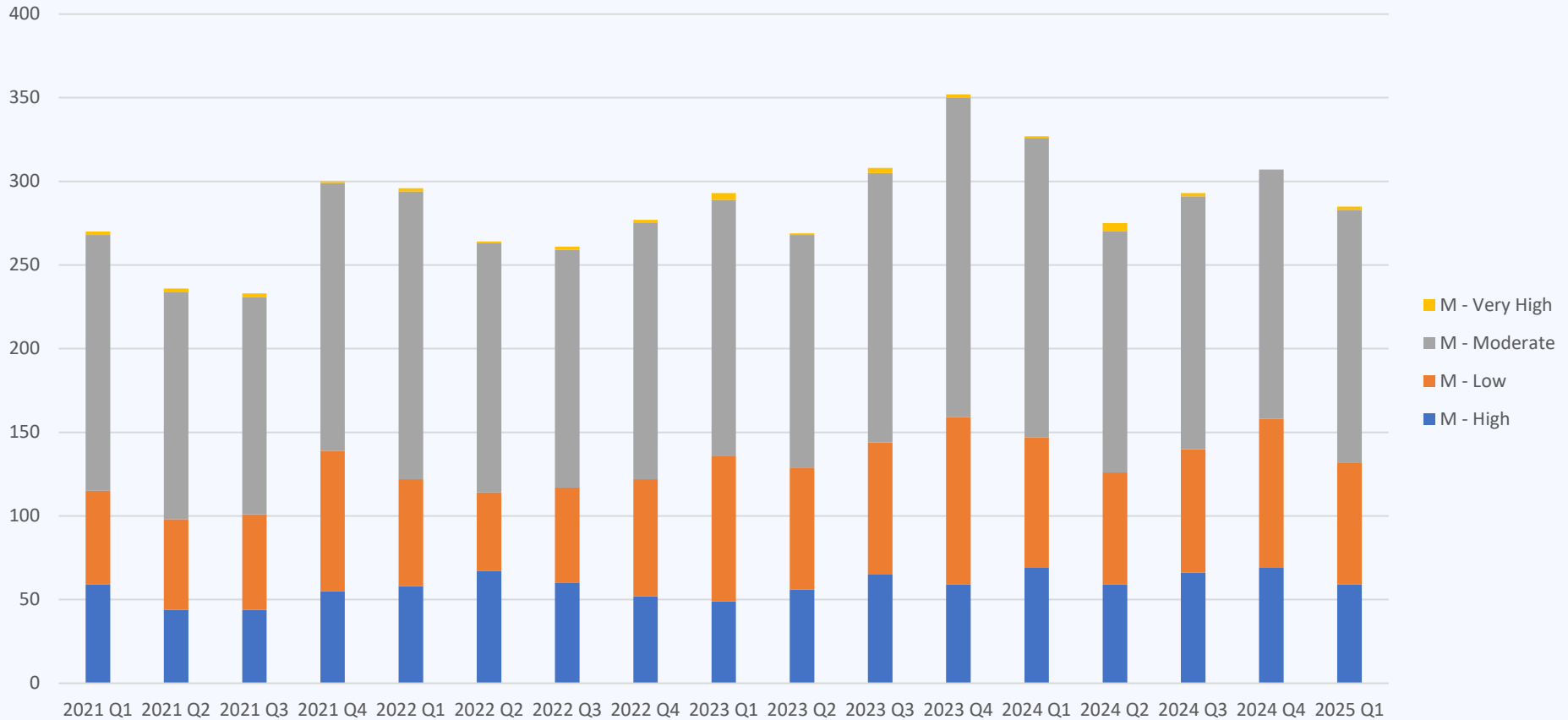
## Total number of YLS/CMIs by gender - female



# Kansas Judicial Branch



## Total number of YLS/CMIs by gender - Male





# Total number of EJJ filed by race, gender, offense type





# Total number of sanctions given by supervision type





Total number of youth that received a behavior response by supervision type, race, gender





# Total number of incentives given by supervision type





Total number of youth with subsequent adjudication within 24 months after successful diversion completion







# Total number of youth supervised on probation who recidivated\*





# Total number of youth whose probation violation was reported to Court





Total number of youth that probation length was extended.





# Total number of youth with successful/unsuccessful discharge from probation

