



# **Kansas Department of Corrections Overview to: House Committee on Corrections and Juvenile Justice**

---

Secretary Ray Roberts

Kansas Department of Corrections

January 14, 2015

## KDOC Focus

- Provide safe operations in facilities, parole services and the community
- Make recidivism reduction a priority
- Enhance juvenile programs and services
- Increase staff recruitment and retention efforts
- Continue to develop strategies to manage a growing prison population
- Ensure Prison Rape Elimination Act (PREA) compliance in correctional facilities

## Recidivism Costs in Kansas

- Kansas incurs high costs when offenders commit new crimes and return to prison due to both criminal justice system expenses and the costs suffered by crime victims. **Avoiding one recidivating event averts \$90,359** in victimization and direct costs avoided by taxpayers.
- 97% of Kansas' incarcerated offenders will be released back into the community; of that number, **65.2%** will not return to prison within 36 months based on 2010 release data; **48%** of the juvenile population will not return; and **70.3%** of adult probationers supervised by the 31 judicial districts will be successful on supervision.

# Substance Abuse and/or Mental Illness is a Significant Contributing Factor in 75% of Parole Violator Returns to Prison

<b>Parole Violators</b> New Sentence   FY 2014		
	<b>New Sentence</b>	<b>Total: 219</b>
<b>Mental Health Score of 3 or higher</b>	<b>29.0%</b>	<b>65</b>
<b>Substance Abuse Score of 4 or higher</b>	<b>47.9%</b>	<b>105</b>
<b>Both Scores</b>	<b>14.6%</b>	<b>32</b>

<b>Parole Violators</b> No New Sentence   FY 2014		
	<b>No New Sentence</b>	<b>Total: 1,014</b>
<b>Mental Health Score of 3 or higher</b>	<b>38.6%</b>	<b>392</b>
<b>Substance Abuse Score of 4 or higher</b>	<b>48.0%</b>	<b>487</b>
<b>Both Scores</b>	<b>18.5%</b>	<b>188</b>

# 1/3 of the Adult Incarcerated Population is Mentally Ill

## Mentally Ill Inmate Population

As of September 4, 2014 | Of the 9,616 total KDOC inmate population:

Severely Persistently Mentally Ill (SPMI)

1,057 (11%)

Serious Mental Illness (SMI)

1,827 (19%)

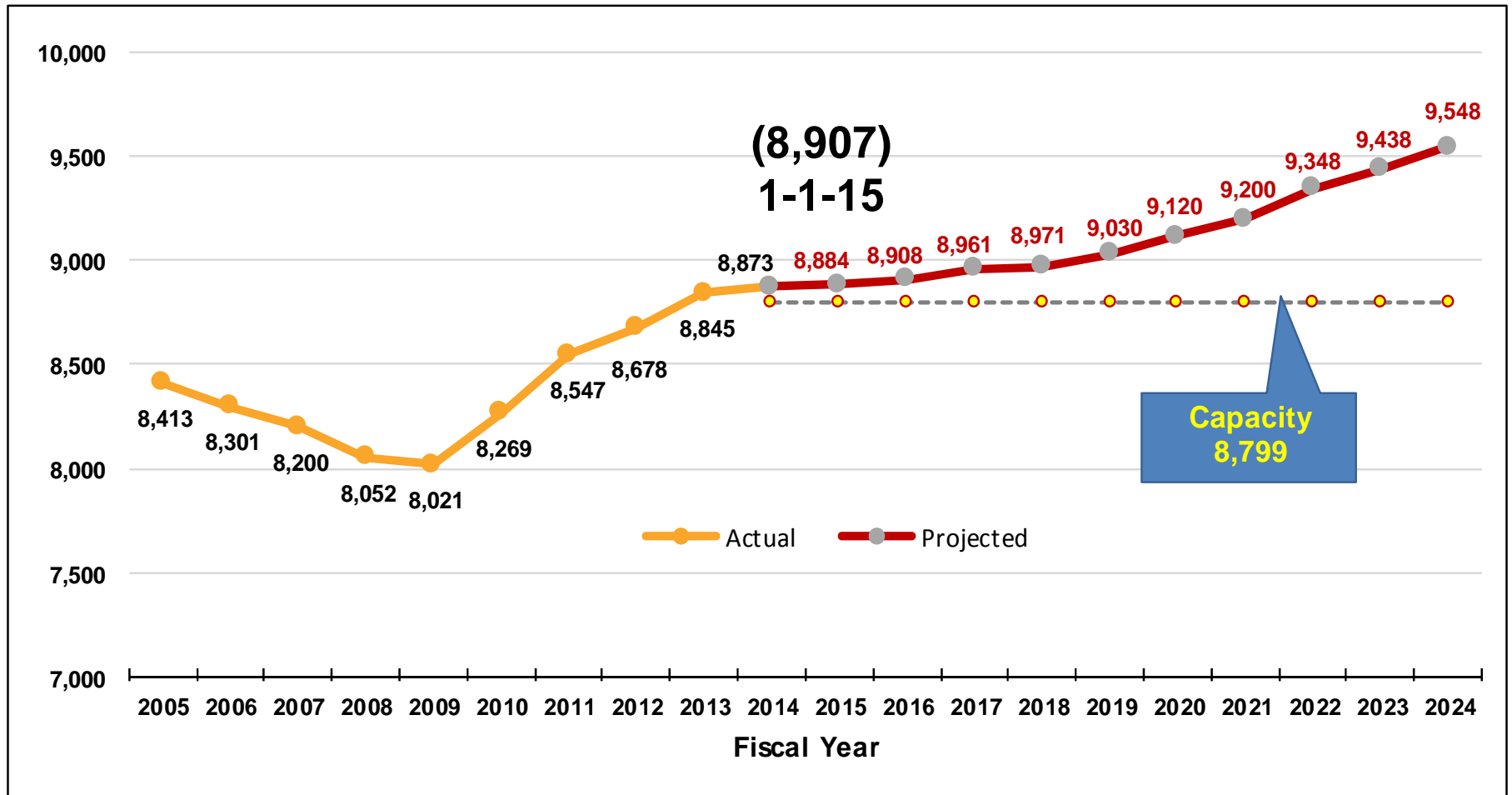
Transient Mental Health Issues

673 (7%)

***The SMI and SPMI population has been reduced in Restrictive Housing Units by 354 since 2011.***

# Male Prison Population

## Actual and Projected 2005 – 2024



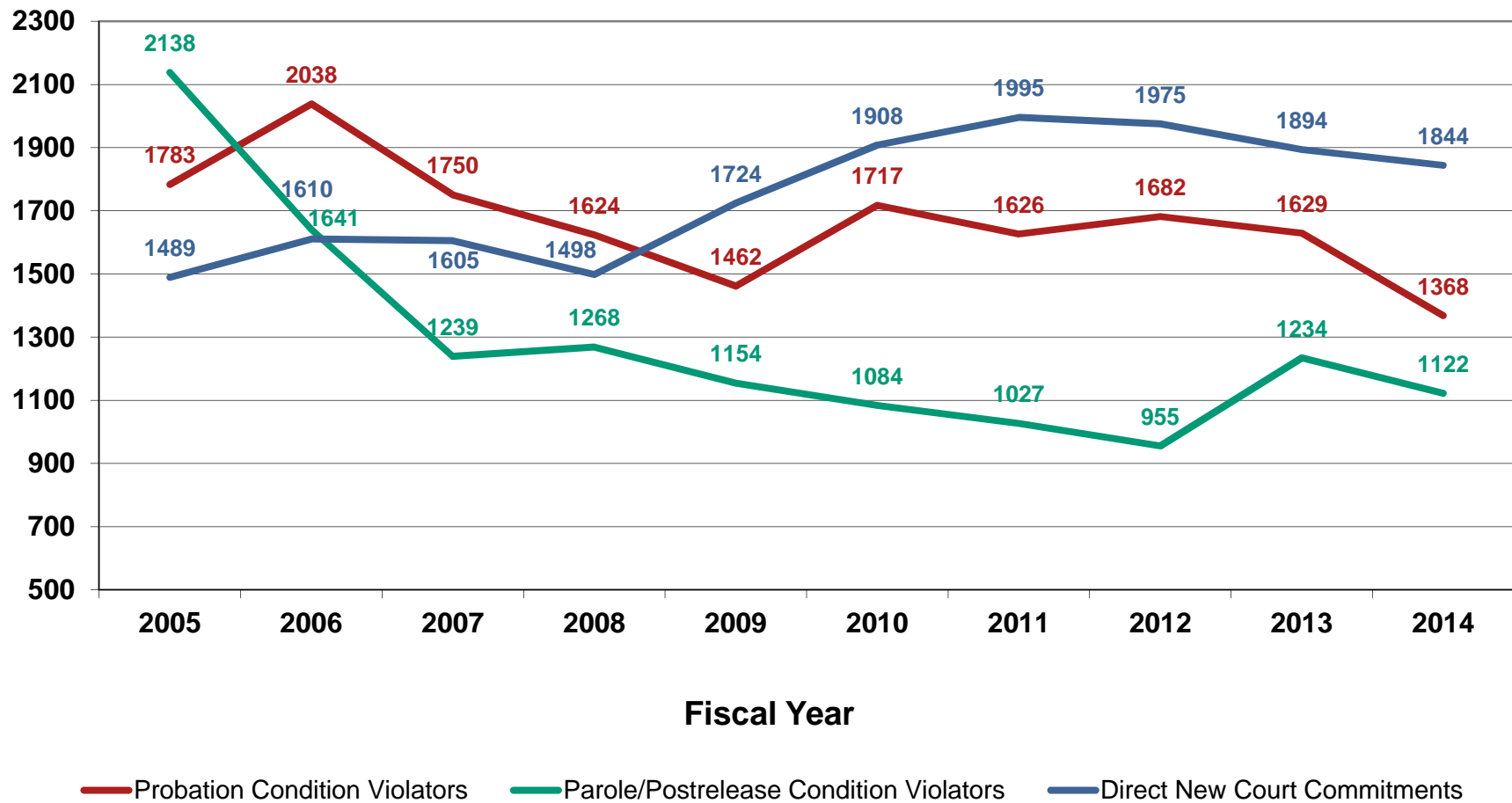
# KDOC Incarceration Rates for Adults are Lower than Many States\*

1. <b>Louisiana</b>	<b>865</b>	18. Ohio	441	35. New Mexico	328
2. <b>Mississippi</b>	<b>690</b>	19. Delaware	440	<b>36. Kansas</b>	<b>324</b>
3. <b>Alabama</b>	<b>650</b>	20. Michigan	434	37. Iowa	295
4. <b>Texas</b>	<b>632</b>	21. Colorado	427	38. Hawaii	283
5. <b>Oklahoma</b>	<b>631</b>	22. South Dakota	426	39. New York	283
6. <b>Arizona</b>	<b>589</b>	23. Pennsylvania	402	40. New Jersey	270
7. <b>Georgia</b>	<b>547</b>	24. Alaska	400	41. Washington	259
8. <b>Arkansas</b>	<b>544</b>	25. California	394	42. Vermont	255
9. <b>Florida</b>	<b>538</b>	26. Wyoming	383	43. Nebraska	244
10. <b>Missouri</b>	<b>512</b>	27. Maryland	380	44. Utah	242
11. Idaho	486	28. Illinois	376	45. Massachusetts	206
12. Kentucky	478	29. Oregon	372	46. North Dakota	206
13. South Carolina	473	30. Montana	367	47. New Hampshire	198
14. Virginia	469	31. West Virginia	366	48. Rhode Island	196
15. Nevada	463	32. North Carolina	362	49. Minnesota	183
16. Tennessee	443	33. Wisconsin	359	50. Maine	147
17. Indiana	442	34. Connecticut	350		

\*based on number of prisoners sentenced to more than 1 year per 100,000 U.S. residents. Source: Prisoners in 2011, Bureau of Justice Statistics, U.S. Department of Justice.

# Kansas Prison Admission Trends

## Admissions by Three Major Types

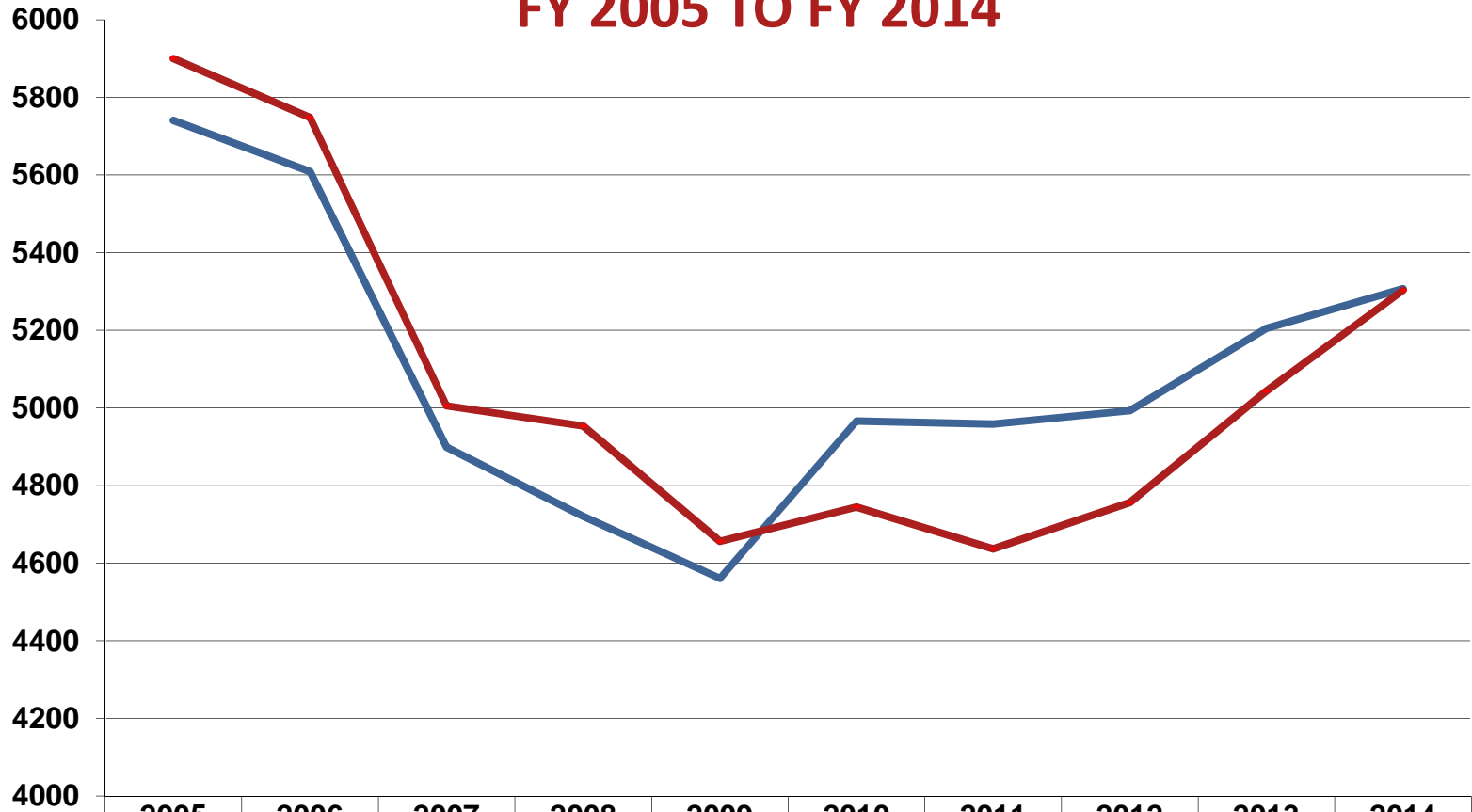


Source: KDOC admission files



# Prison Admissions vs. Releases

FY 2005 TO FY 2014



	2005	2006	2007	2008	2009	2010	2011	2012	2013	2014
Admission	5741	5609	4899	4721	4561	4966	4958	4993	5205	5307
Release	5900	5748	5005	4953	4656	4745	4637	4756	5043	5303

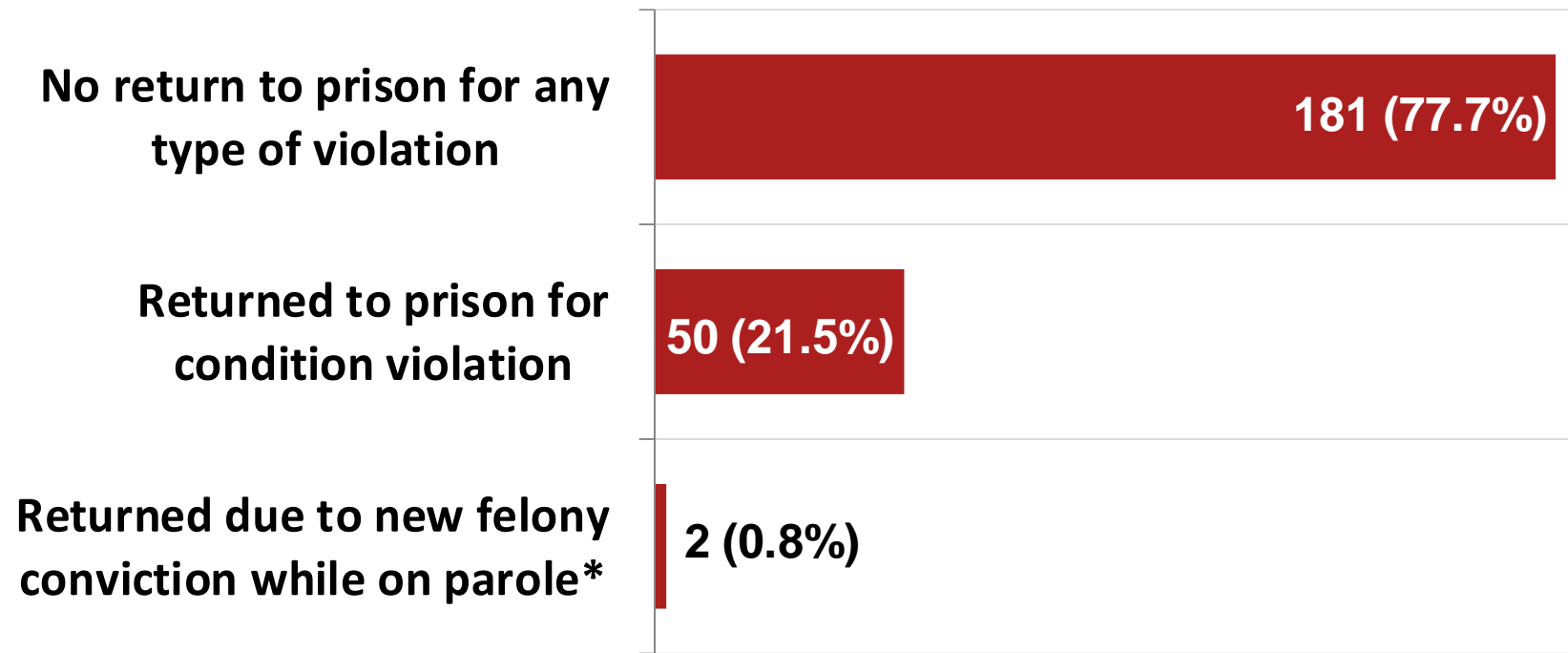
Fiscal Year

Source: KDOC admission and release files

# Prisoner Review Board (Only 2 New Felony Returns between FY 12 and FY 14)

## Prisoner Review Board Decisions

Results of 233 offenders released | FY 2012-FY 2014



*NOTE: 60 (20.5%) were not released as of June 30, 2014.*

*\* New Felony Sentence Returns were a result of a theft conviction and a failure to register conviction.*

# Kansas Reported Crime Index 2009 - 2013

	Violent Crime					Property Crime				Arson*
	Sub-total	Murder	Rape	Robbery	Agg. Assault/ Battery	Sub-total	Burglary	Theft	Vehicle Theft	
	%	%	%	%	%	%	%	%	%	
<b>2009-2013</b>	-14.4	-7.7	-14	-22.8	-12.7	-4.7	-11.4	-4.4	14.8	-43.7

# Juvenile Improvements

- Fewer youth coming to intake, fewer case filings, and fewer youth sentenced to intensive supervision or a correctional facility.
- 2014 HB 2588 Legislation authorized:
  - Raising the age of waiver to adult court from 10 to 12
  - Increasing opportunities for juveniles in correctional facilities to earn good time for positive behavior
  - Use of a risk/needs assessment during the pre-disposition investigation process
  - Provide a study of the costs and services provided at YRC II facilities in the state

# Impact of Adult Offender Programming

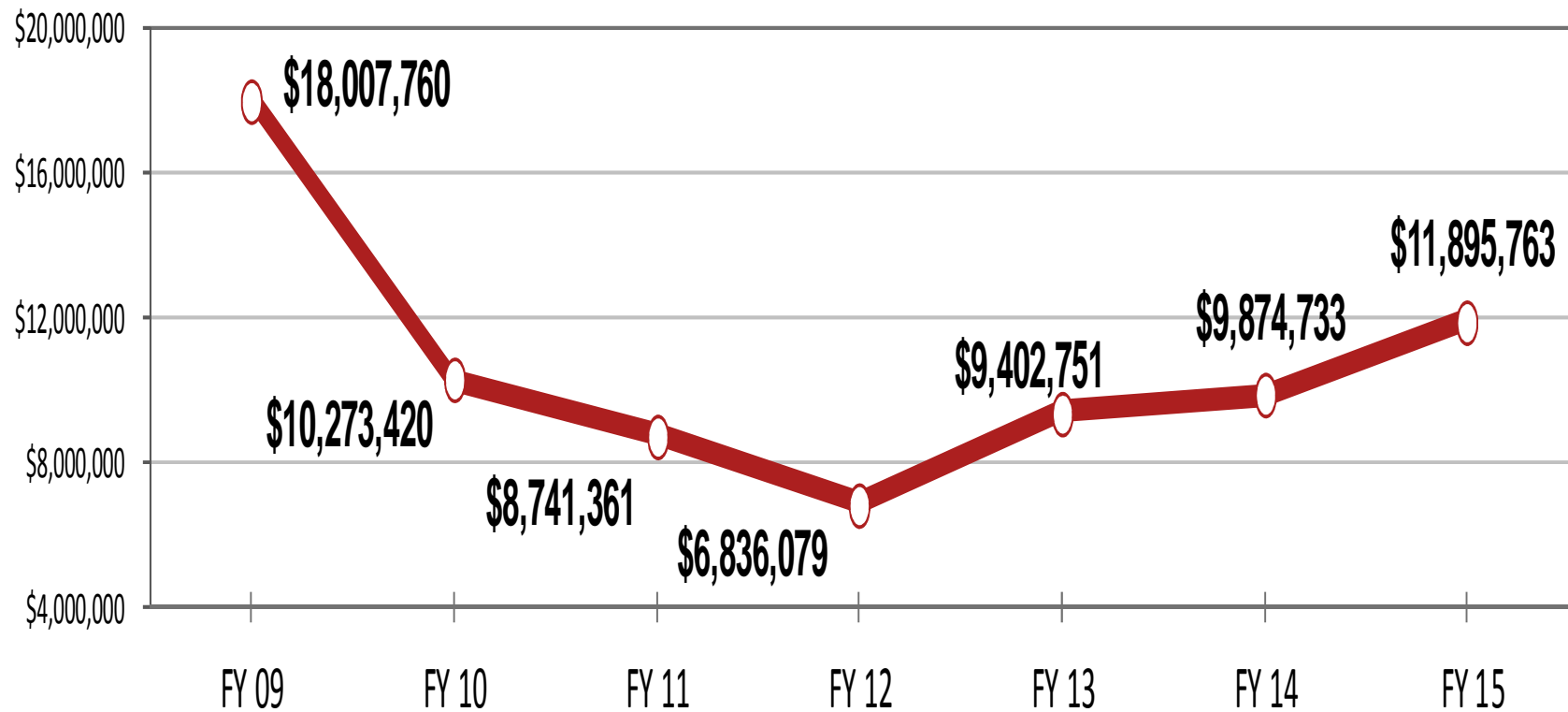
- Implementation of evidence-based programming resulted in a decrease in crime between 10% and 20% (Pew).
- **Additional funding in FY 13 and FY 15 has increased the number of offenders served by 1,500.**
- Program providers delivered services that allowed 73% of eligible releasing offenders to receive S.B. 14 program credit. This reduced the need for approximately 250 additional prison beds.

*FY 2014 is not included because no new program dollars were added.*

# Status of Adult Offender Program Funding

## Total Program Funding

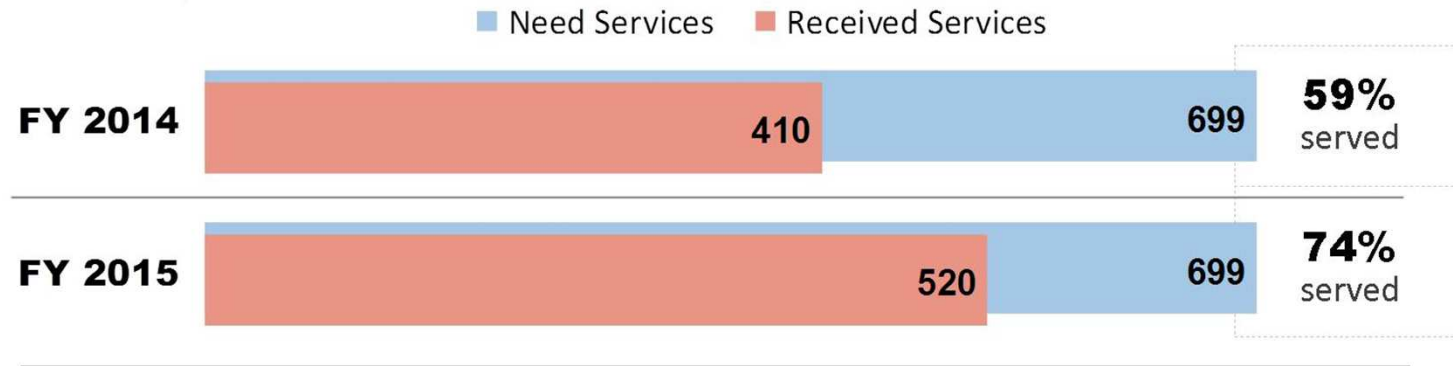
The KDOC experienced a reduction of over 50% between FY 09 & 11.



# Unmet Program Needs

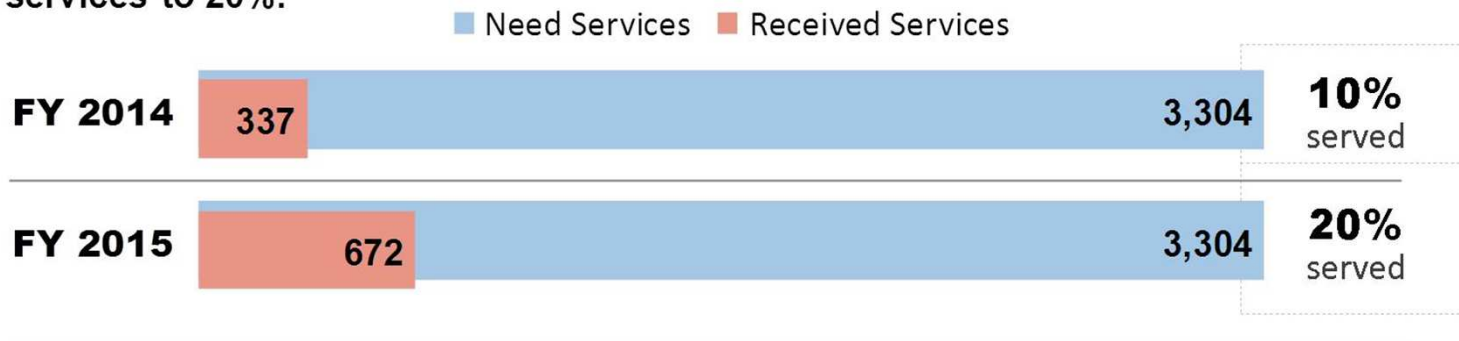
## Sex Offender Treatment (SOTP)

New program dollars increase the number of offenders receiving services by 15%.



## Substance Abuse Programming (SAP)

New program dollars double the number of offenders receiving services to 20%.



# Mentoring4Success Showing Great Results

- **5,153** mentors matched by **January 1, 2015**
- Data shows that offenders who had a mentor at release recidivated at **8.7%** at 12 months post release, compared to **20.7%** for the overall population.
- Mentors help reduce recidivism by assisting offenders find jobs, a place to live, and transition to the community.





# Program Evaluation Results (Adult Population)

## Kansas Correctional Program Consumer Reports Analysis

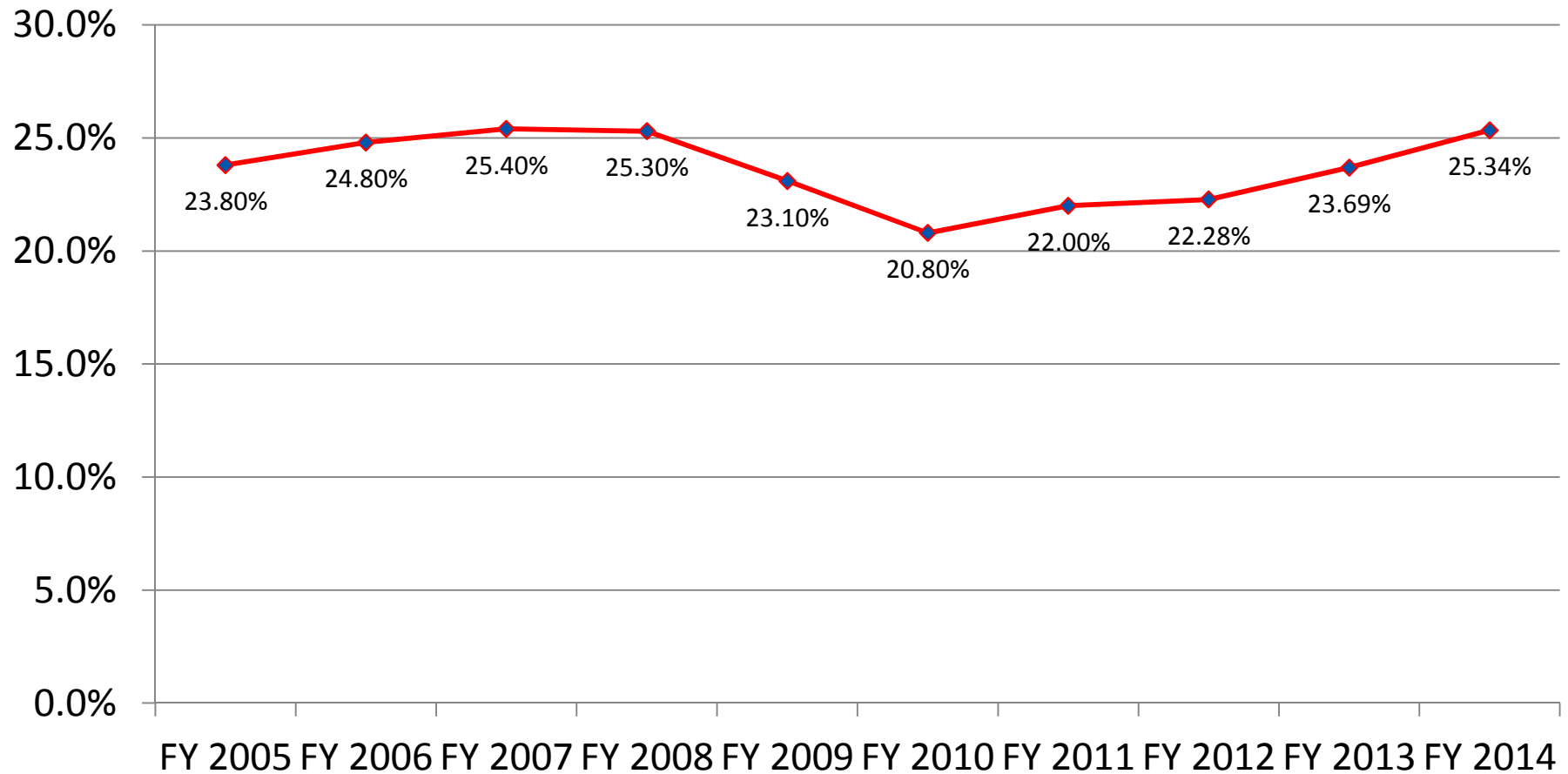
Actual Budget | FY 2012

Assessed Programs	Cost Per Participant	Benefits per Participant	Cost-Benefit Ratio
Thinking for a Change (T4C)	\$317	\$5,158	\$16.33
Offender Workforce Development Services (OWDS)	\$317	\$3,017	\$9.55
Drug Treatment (Prison)	\$3,338	\$7,152	\$2.15
Sex Offender Treatment Program (Prison)	\$3,381	\$7,217	\$2.14
Drug Treatment (Community)	\$3,625	\$9,021	\$2.50

## An increasing number of private industry jobs reduce recidivism and expense to the state

<b>Private Industry Inmate Payments   FY 2010 — FY 2014</b>					
	<b>FY 10</b>	<b>FY 11</b>	<b>FY 12</b>	<b>FY 13</b>	<b>FY 14</b>
<b>NUMBER OF EMPLOYEES</b>	644	756	890	860	915
<b>PAYMENT TYPE</b>					
<b>Room &amp; Board</b>	<b>\$2,168,751</b>	<b>\$2,767,378</b>	<b>\$3,300,375</b>	<b>\$3,595,680</b>	<b>\$ 3,756,784</b>
Transportation	\$10,464	\$19,264	\$22,336	\$22,896	\$23,260
Crime Victims	\$173,539	\$231,474	\$273,912	\$313,428	\$349,679
Court Ordered Restitution	\$260,212	\$322,006	\$386,166	\$405,711	\$401,682
Collection Agency	\$13,018	\$15,902	\$22,380	\$29,118	\$24,645
Criminal Court Cost	\$46,035	\$58,545	\$67,323	\$70,992	\$67,978
Civil Court Cost	\$254	\$286	\$834	\$409	\$203
Estimated Federal Taxes	\$359,212	\$667,376	\$936,292	\$1,015,809	\$1,078,900
Estimated State Taxes	\$185,216	\$251,060	\$323,182	\$344,310	\$329,231
<b>Total</b>	<b>\$3,216,701</b>	<b>\$4,333,291</b>	<b>\$5,332,800</b>	<b>\$5,798,353</b>	<b>\$ 6,032,362</b>

# KDOC Adult Uniformed Staff Turnover Rate FY 2005 -- FY 2014



**KDOC is collaborating with the  
Kansas Department of  
Administration to develop KDOC  
Recruitment and Retention  
Recommendations.**

# Inmate on Staff Batteries (Adult Facilities) FY 14

## Inmate on Staff Battery Incidents

Breakdown of 286 Inmate on Staff Battery Incidents | FY 2014



Data on staff battery incidents and level of injuries reported by all facilities through PBMS using ASCA counting rules for FY14

## Adult Escapes

	FY 09	FY 10	FY 11	FY 12	FY 13	FY 14	FY 15
<b>Escapes from Secure Facilities</b>	3	2	3	0	0	0	0
<b>Escapes from Non-secure Facilities</b>	13	8	5	17	13	13	2
<b>Total</b>	16	10	8	17	13	13	2

## Juvenile Escapes

	FY 09	FY 10	FY 11	FY 12	FY 13	FY 14	FY 15
<b>Escapes from Secure Facilities</b>	2	0	0	0	0	0	0

# Food Service Update

- Current contractor of Aramark operates 21 kitchens over 9 facilities at a rate of \$1.44 per meal
- Contract performance required to meet or exceed American Correctional Association (ACA) and National Commission on Correctional Health Care (NCCCHC) standards
- Contract performance monitored by weekly & monthly facility inspections, both announced & unannounced
- Inspections follow sanitation & food safety requirements established by KS Department of Agriculture
- Most common deficiencies are: equipment maintenance needs; food splattered walls; equipment surfaces smeared

# KDOC and DOJ Sign Mutual Agreement Regarding the Topeka Correctional Facility

- Mutual Agreement allows for an independent monitor to verify reform compliance.
- In 2014, the Topeka Correctional Facility (TCF) was found to be 100% compliant with federally mandated Prison Rape Elimination Act (PREA), designed to protect inmates from rape and sexual misconduct.
- TCF has developed a culture over the past three years of collaboration with zero tolerance for sexual misconduct by offenders or staff.
- Security operations have significantly improved.