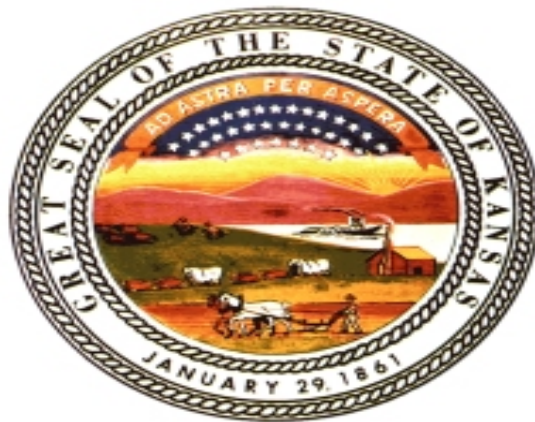


Statistical Summary

FY 2014 Community Corrections Offender Population



KANSAS DEPARTMENT OF CORRECTIONS

COMMUNITY CORRECTIONS DIVISION

A safer Kansas through effective community collaboration and correctional practices

JULY 2014

Preface

This report provides a detailed statistical summary of adult offenders under the Kansas community corrections system during fiscal year 2014. The report is based on data pulled from the Total Offender Activity Documentation System (TOADS). The number of offenders for whom information is available varies across data items. The data may differ from other reports published by the Kansas Department of Corrections and the Kansas Sentencing Commission because this report reflects information for community corrections offenders only; captures different data elements; and is captured at different points in time. Each set of data is prefaced with a short description of content.

Fiscal Year 2014 Community Corrections Statistical Summary Data Index

Page	1	Title Page
Page	2	Preface
Page	3	Index
Pages	4 - 7	Section I: Average Daily Population
Pages	8 - 9	Section II: Number and Percentage of Community Corrections Offender Files Closed by Agency and Closure Type
Pages	10 - 42	Section III: Number and Percentage of Community Corrections Offenders Files Closed by Type for Fiscal Years 2007 - 2014
Pages	43 - 44	Section IV: Number and Percentage of Departures by Agency
Pages	45 - 47	Section V: Number of Community Corrections Offenders with an LSI-R Score: Termination Reason by Risk Level
Pages	48 - 52	Section VI: Number and Percentage of Active Offenders by Agency per Risk Level: LSI-R Conducted Closest to 12/31/13 and Closest to 6/30/14

SECTION I: Average Daily Population for FY 2014

The first section of data consists of the average daily population (ADP) for the community corrections offender population. There are three types of ADP included:

Top Number: ADP average for that particular month.

YTD ADP: ADP averaged from the time the fiscal year started (the top number and this number will always be the same for July of each year since it's the first month).
Example: For September 2013 numbers, the number will be the average for July, August, & September.

12mo ADP: ADP averaged over the last 12 months. Example: June 2014 numbers, it looks at the ADP from July 2013 – June 2014 (12 months). The last month of each fiscal year (June) will always be the same as the YTD ADP (since June is the 12th month).

FY 2014 ADP (YTD & 12MO)

		July 2013	Aug 2013	Sept 2013	Oct 2013	Nov 2013	Dec 2013	Jan 2014	Feb 2014	Mar 2014	Apr 2014	May 2014	June 2014
2nd District	ADP	131.6	139.7	136.7	134.4	134.3	129.9	133.0	144.1	136.0	133.0	134.6	137.8
	YTD ADP	131.6	135.7	136.0	135.6	135.3	134.4	134.2	135.5	135.5	135.3	135.2	135.4
	12MO ADP	119.9	121.9	123.5	125.0	126.5	127.7	129.3	132.1	133.4	134.4	135.1	135.4
4th District	ADP	167.3	161.3	161.2	163.6	159.0	161.0	161.9	157.1	156.3	158.7	163.0	169.9
	YTD ADP	167.3	164.3	163.3	163.4	162.5	162.2	162.2	161.6	161.0	160.7	160.9	161.7
	12MO ADP	157.0	157.1	157.4	157.8	158.4	159.2	160.6	160.9	161.4	161.2	161.1	161.7
5th District	ADP	138.6	144.4	141.9	138.9	140.1	146.7	151.2	153.9	147.5	155.4	153.6	152.8
	YTD ADP	138.6	141.5	141.6	141.0	140.8	141.8	143.1	144.5	144.8	145.9	146.6	147.1
	12MO ADP	128.0	130.5	132.7	134.0	134.8	135.8	137.3	139.4	141.1	143.4	145.3	147.1
6th District	ADP	140.9	145.8	141.4	145.2	151.9	153.1	148.1	149.2	144.5	140.8	133.3	135.0
	YTD ADP	140.9	143.4	142.7	143.3	145.0	146.4	146.6	147.0	146.7	146.1	144.9	144.1
	12MO ADP	159.8	157.4	154.8	153.1	152.4	151.5	150.0	148.8	147.5	145.7	144.9	144.1
8th District	ADP	240.7	232.5	228.9	231.6	229.7	232.1	236.9	243.4	242.5	259.5	259.0	246.3
	YTD ADP	240.7	236.6	234.0	233.4	232.7	232.6	233.2	234.5	235.4	237.8	239.7	240.3
	12MO ADP	252.6	250.6	248.0	246.3	244.8	243.4	242.3	241.1	239.2	239.5	240.5	240.3
11th District	ADP	260.2	261.1	251.4	248.1	248.8	258.9	263.6	254.7	255.8	258.4	254.0	246.6
	YTD ADP	260.2	260.7	257.6	255.2	253.9	254.8	256.0	255.9	255.8	256.1	255.9	255.1
	12MO ADP	254.3	255.7	256.2	255.6	255.7	256.7	257.5	257.0	256.6	256.5	255.9	255.1
12th District	ADP	63.3	66.6	68.0	67.2	68.3	60.9	63.7	64.9	63.9	61.7	60.7	63.1
	YTD ADP	63.3	65.0	66.0	66.3	66.7	65.7	65.4	65.4	65.2	64.9	64.5	64.4
	12MO ADP	54.8	56.7	58.6	60.3	61.5	61.8	62.5	63.1	63.6	63.8	64.0	64.4
13th District	ADP	174.8	188.0	187.4	196.5	197.1	199.4	202.1	204.6	206.4	209.0	205.8	207.2
	YTD ADP	174.8	181.4	181.4	183.4	186.7	188.8	190.5	192.2	193.7	195.1	196.5	197.4
	12MO ADP	157.4	161.4	165.1	169.5	174.2	179.0	182.7	186.3	189.7	192.7	195.3	198.2
22nd District	ADP	113.7	100.7	110.2	115.5	116.9	117.8	113.9	112.4	111.8	106.7	109.5	122.4
	YTD ADP	113.7	107.2	108.2	110.0	111.4	112.5	112.7	112.6	112.5	112.0	111.7	112.6
	12MO ADP	116.6	114.7	113.8	113.8	113.6	113.6	113.8	113.8	113.8	113.2	112.5	112.6
24th District	ADP	49.0	50.0	45.4	39.3	43.4	45.4	44.8	43.1	42.5	42.0	42.2	47.6
	YTD ADP	49.0	49.5	48.1	45.9	45.4	45.4	45.3	45.1	44.8	44.5	44.3	44.6
	12MO ADP	53.2	53.8	54.0	53.3	52.5	51.8	51.0	49.7	47.8	46.1	45.0	44.6
25th District	ADP	160.4	162.4	163.4	161.5	163.9	171.0	178.8	175.3	180.9	182.6	177.2	174.2
	YTD ADP	160.4	161.4	162.1	161.9	162.3	163.8	165.9	167.1	168.6	170.0	170.7	171.0
	12MO ADP	162.6	162.4	162.1	161.9	161.7	161.8	162.6	163.2	165.4	167.5	169.4	171.0
28th District	ADP	395.5	406.4	405.1	406.8	417.8	428.0	418.6	411.3	408.3	400.1	394.2	391.5
	YTD ADP	395.5	401.0	402.3	403.5	406.3	409.9	411.2	411.2	410.9	409.8	408.4	407.0
	12MO ADP	393.1	393.7	395.1	396.8	398.9	401.7	404.1	404.8	406.2	406.9	406.7	407.0
31st District	ADP	180.2	179.3	189.4	191.4	195.6	198.4	195.6	197.8	189.2	190.9	199.7	205.9
	YTD ADP	180.2	179.8	183.0	185.1	187.2	189.1	190.0	191.0	190.8	190.8	191.6	192.8
	12MO ADP	174.6	176.4	178.7	180.8	183.3	185.6	187.3	188.9	189.5	189.9	191.0	192.8

Atchison	ADP	66.6	66.5	68.1	65.8	67.0	67.4	69.4	71.0	74.3	77.4	74.4	69.9
	YTD ADP	66.6	66.6	67.1	66.8	66.8	66.9	67.3	67.7	68.5	69.4	69.8	69.8
	12MO ADP	61.4	62.1	62.7	63.4	63.9	64.5	65.1	66.0	67.3	68.6	69.5	69.8
Central Kansas	ADP	184.5	195.2	207.6	211.4	214.6	205.3	207.0	207.0	207.1	210.9	206.3	206.7
	YTD ADP	184.5	189.9	195.8	199.7	202.7	203.1	203.7	204.1	204.4	205.1	205.2	205.3
	12MO ADP	194.3	193.9	194.8	195.7	196.5	197.3	198.1	199.0	200.1	201.5	203.2	205.3
Cimarron Basin	ADP	159.4	158.2	163.4	161.9	168.2	164.9	156.4	164.1	165.4	162.7	163.1	167.5
	YTD ADP	159.4	158.8	160.3	160.7	162.2	162.7	161.8	162.1	162.4	162.5	162.5	162.9
	12MO ADP	158.8	160.8	162.4	163.9	165.0	165.6	164.5	164.4	163.8	162.9	162.3	162.9
Cowley	ADP	139.0	139.9	141.6	138.0	138.6	136.8	139.6	145.4	148.5	144.5	140.0	135.2
	YTD ADP	139.0	139.5	140.2	139.6	139.4	139.0	139.1	139.9	140.8	141.2	141.1	140.6
	12MO ADP	146.4	145.6	145.1	144.1	143.2	142.1	141.1	140.8	140.5	140.7	141.1	140.6
Douglas	ADP	181.7	187.2	179.4	174.4	174.6	181.9	174.5	181.3	179.4	185.3	177.0	183.7
	YTD ADP	181.7	184.5	182.8	180.7	179.5	179.9	179.1	179.4	179.4	180.0	179.7	180.0
	12MO ADP	178.5	179.2	179.3	178.4	177.8	178.5	178.3	178.7	178.8	179.5	179.6	180.0
Harvey/McPherson	ADP	167.4	170.3	171.5	168.6	168.0	172.5	182.2	179.2	186.8	190.6	200.1	205.7
	YTD ADP	167.4	168.9	169.7	169.5	169.2	169.7	171.5	172.5	174.1	175.7	177.9	180.2
	12MO ADP	178.1	176.4	175.1	174.6	173.9	173.4	173.2	172.7	173.7	174.9	177.3	180.2
Johnson-AISP	ADP	602.8	595.8	598.4	603.0	619.6	623.9	636.3	633.0	625.5	619.8	605.6	603.7
	YTD ADP	602.8	599.3	599.0	600.0	603.9	607.3	611.4	614.1	615.4	615.8	614.9	614.0
	12MO ADP	623.8	620.7	617.7	615.7	616.4	617.6	617.2	616.9	616.9	616.5	614.8	614.0
Johnson-RES	ADP	181.3	171.0	172.7	175.5	159.2	152.3	157.6	164.8	165.1	173.9	168.5	160.0
	YTD ADP	181.3	176.2	175.0	175.1	171.9	168.7	167.1	166.8	166.6	167.3	167.4	166.8
	12MO ADP	159.2	161.8	163.4	165.2	164.8	164.5	165.0	165.2	165.4	166.8	167.5	166.8
Leavenworth	ADP	126.4	125.6	133.1	134.9	134.9	136.1	138.1	137.9	139.6	147.2	153.7	163.4
	YTD ADP	126.4	126.0	128.4	130.0	131.0	131.8	132.7	133.4	134.1	135.4	137.0	139.2
	12MO ADP	119.4	120.8	122.2	123.7	125.5	127.1	128.5	129.8	131.5	133.6	136.0	139.2
Montgomery	ADP	135.6	138.8	139.7	126.2	134.4	137.7	136.5	138.2	142.2	139.0	143.0	146.1
	YTD ADP	135.6	137.2	138.0	135.1	134.9	135.4	135.6	135.9	136.6	136.8	137.4	138.1
	12MO ADP	134.2	135.3	136.7	136.7	137.0	137.6	137.3	137.2	137.5	138.0	138.3	138.1
Northwest Kansas	ADP	216.0	217.7	215.2	221.1	225.5	229.5	230.8	227.8	229.0	224.3	236.2	244.8
	YTD ADP	216.0	216.9	216.3	217.5	219.1	220.8	222.3	223.0	223.6	223.7	224.8	226.5
	12MO ADP	202.1	204.6	206.6	208.0	210.8	214.1	216.6	217.9	219.8	221.3	223.8	226.5
Reno	ADP	347.3	343.0	333.0	324.7	326.3	323.1	321.4	308.5	307.9	308.4	320.9	309.6
	YTD ADP	347.3	345.2	341.1	337.0	334.9	332.9	331.3	328.4	326.1	324.4	324.0	322.8
	12MO ADP	345.1	345.2	344.8	343.3	340.4	338.4	336.2	332.6	329.8	327.7	325.9	322.8
Riley	ADP	134.2	130.8	126.1	115.5	108.4	112.3	112.1	115.3	121.4	123.3	124.7	127.1
	YTD ADP	134.2	132.5	130.4	126.7	123.0	121.2	119.9	119.3	119.6	119.9	120.4	120.9
	12MO ADP	158.0	154.5	150.7	146.3	141.1	136.1	131.7	127.7	125.0	123.2	122.0	120.9
Santa Fe Trail	ADP	154.5	153.2	150.5	151.2	152.3	158.1	172.0	175.1	169.4	166.3	166.2	157.3
	YTD ADP	154.5	153.9	152.7	152.4	152.3	153.3	156.0	158.4	159.6	160.3	160.8	160.5
	12MO ADP	169.8	169.1	167.7	166.2	164.2	163.2	162.8	161.9	161.6	161.4	161.0	160.5

Sedgwick (w/Drug Crt)	ADP	1513.5	1518.1	1526.7	1552.8	1549.4	1541.0	1535.3	1544.2	1523.4	1526.8	1551.3	1532.7
	YTD ADP	1513.5	1515.8	1519.4	1527.8	1532.1	1533.6	1533.8	1535.1	1533.8	1533.1	1534.8	1534.6
	12MO ADP	1440.1	1448.1	1457.4	1468.3	1479.6	1488.0	1495.7	1504.4	1512.8	1520.8	1529.3	1534.6
Sedgwick-RES	ADP	63.3	62.0	65.7	63.8	63.8	68.2	61.0	64.0	62.1	58.6	59.8	63.8
	YTD ADP	63.3	62.7	63.7	63.7	63.7	64.5	64.0	64.0	63.8	63.3	62.9	63.0
	12MO ADP	6.2	11.3	16.7	21.9	27.1	32.7	37.7	43.0	48.1	52.9	57.8	63.0
Shawnee	ADP	592.1	607.3	624.7	638.6	647.9	619.1	618.2	622.7	628.9	636.5	628.6	625.6
	YTD ADP	592.1	599.7	608.0	615.7	622.1	621.6	621.1	621.3	622.2	623.6	624.1	624.2
	12MO ADP	594.2	597.1	601.5	607.0	611.6	613.5	614.8	615.9	617.0	619.0	620.0	624.2
South Central Kansas	ADP	98.3	103.2	107.8	110.4	116.9	112.3	117.8	118.8	118.2	112.6	109.4	108.4
	YTD ADP	98.3	100.8	103.1	104.9	107.3	108.2	109.5	110.7	111.5	111.6	111.4	111.2
	12MO ADP	104.0	103.0	102.6	102.7	103.8	104.8	105.9	107.2	108.7	110.0	110.6	111.2
Sumner	ADP	87.1	88.3	90.3	92.5	93.0	90.2	91.4	88.6	90.5	97.6	96.7	96.6
	YTD ADP	87.1	87.7	88.6	89.6	90.2	90.2	90.4	90.2	90.2	91.0	91.5	91.9
	12MO ADP	81.9	83.1	84.1	84.9	85.6	85.8	86.3	86.9	87.9	89.2	90.8	91.9
Unified Government	ADP	694.8	697.5	713.6	715.7	726.2	719.4	741.3	748.6	745.7	739.9	778.6	771.9
	YTD ADP	694.8	696.2	702.0	705.4	709.6	711.2	715.5	719.6	722.5	724.3	729.2	732.8
	12MOADP	673.2	674.3	678.3	682.8	687.6	692.5	699.2	706.4	713.0	718.3	726.1	732.8
TOTAL - AISP	ADP	7817.4	7874.8	7921.1	7946.7	8032.6	8034.1	8092.5	8118.5	8088.8	8111.9	8162.6	8156.2
	YTD ADP	7817.4	7846.1	7871.1	7890.0	7918.5	7937.8	7959.9	7979.7	7991.8	8003.8	8018.3	8029.8
	12MO ADP	7746.9	7766.0	7789.5	7813.8	7842.1	7869.6	7893.5	7915.3	7940.6	7967.8	7998.3	8029.8
TOTAL - RES	RES-ADP	244.6	233.0	238.4	239.3	223.0	220.5	218.6	228.8	227.2	232.5	228.3	223.8
	YTD ADP	244.6	238.8	238.7	238.8	235.7	233.1	231.1	230.8	230.4	230.6	230.4	229.8
	12MO ADP	165.4	173.1	180.1	187.1	192.0	197.2	202.8	208.2	213.4	219.7	225.3	229.8
TOTAL - BOTH	BOTH-ADP	8062.0	8107.8	8159.5	8186.0	8255.6	8254.6	8311.1	8347.3	8316.0	8344.4	8390.9	8380.0
	YTD ADP	8062.0	8084.9	8109.8	8128.8	8154.2	8170.9	8190.9	8210.5	8222.2	8234.4	8248.7	8259.6
	12MO ADP	7912.3	7939.0	7969.6	8000.9	8034.0	8066.8	8096.3	8123.5	8154.1	8187.5	8223.5	8259.6

**SECTION II: Number and Percentage of Community Corrections Offender Files Closed in FY 2014
by Agency and Closure Type**

The data in Section II is a one page snap-shot of how offender files closed in fiscal year 2014. Information was pulled from the Court Case Sentencing Activity Report which was run on 7/11/14 at 7:08:09 AM.

You may notice that if you sum up all the agencies they will not equal the statewide total. This is because looking at the data from the agency perspective, offender files have the possibility of having more than one file during that particular time frame (meaning offender could be on supervision, completed, then back on within the same year) – in data terms, the offender can be duplicated. But when it looks at the statewide summary it's just looking at the actual offender (even though it says offender files) – in data terms – unduplicated.

**Number and Percentage of Community Corrections Offender Files Closed in FY 2014
by Agency and Reason for Closure**

CC Agency	# Offender Files Closed	Revoked-Condition	Total % Revocation Closures	Revoked-New Felony	Total % Revocation Closures	Revoked-New Misdemeanor	Total % Revocation Closures	Total # Revocation Closures	Total % of ALL Revocation Closures	Successful	Total % Closures	Unsuccessful	Total % Closures	Other (Death/Not Sentenced to CC)	Total % Closures
2nd District	115	12	10.4%	4	3.5%	0	0.0%	16	13.9%	88	76.5%	1	0.9%	10	8.7%
4th District	129	23	17.8%	9	7.0%	1	0.8%	33	25.6%	63	48.8%	28	21.7%	5	3.9%
5th District	96	9	9.4%	11	11.5%	0	0.0%	20	20.8%	53	55.2%	20	20.8%	3	3.1%
6th District	94	23	24.5%	8	8.5%	3	3.2%	34	36.2%	41	43.6%	18	19.1%	1	1.1%
8th District	201	39	19.4%	12	6.0%	3	1.5%	54	26.9%	85	42.3%	36	17.9%	26	12.9%
11th District	146	27	18.5%	12	8.2%	2	1.4%	41	28.1%	86	58.9%	6	4.1%	13	8.9%
12th District	54	11	20.4%	2	3.7%	0	0.0%	13	24.1%	26	48.1%	9	16.7%	6	11.1%
13th District	64	4	6.3%	4	6.3%	0	0.0%	8	12.5%	38	59.4%	7	10.9%	11	17.2%
22nd District	77	8	10.4%	4	5.2%	0	0.0%	12	15.6%	58	75.3%	4	5.2%	3	3.9%
24th District	39	5	12.8%	8	20.5%	1	2.6%	14	35.9%	19	48.7%	6	15.4%	0	0.0%
25th District	96	15	15.6%	3	3.1%	1	1.0%	19	19.8%	70	72.9%	5	5.2%	2	2.1%
28th District	249	41	16.5%	32	12.9%	4	1.6%	77	30.9%	149	59.8%	6	2.4%	17	6.8%
31st District	50	10	20.0%	7	14.0%	1	2.0%	18	36.0%	26	52.0%	4	8.0%	2	4.0%
Atchison	31	6	19.4%	4	12.9%	1	3.2%	11	35.5%	13	41.9%	6	19.4%	1	3.2%
Central Kansas	110	19	17.3%	5	4.5%	0	0.0%	24	21.8%	50	45.5%	30	27.3%	6	5.5%
Cimmaron Basin	123	21	17.1%	6	4.9%	1	0.8%	28	22.8%	58	47.2%	34	27.6%	3	2.4%
Cowley	91	14	15.4%	2	2.2%	3	3.3%	19	20.9%	42	46.2%	29	31.9%	1	1.1%
Douglas	131	23	17.6%	6	4.6%	0	0.0%	29	22.1%	82	62.6%	12	9.2%	8	6.1%
Harvey/McPherson	137	19	13.9%	3	2.2%	2	1.5%	24	17.5%	80	58.4%	26	19.0%	7	5.1%
Johnson	583	71	12.2%	61	10.5%	25	4.3%	157	26.9%	359	61.6%	34	5.8%	33	5.7%
Leavenworth	61	11	18.0%	6	9.8%	1	1.6%	18	29.5%	26	42.6%	15	24.6%	2	3.3%
Montgomery	105	16	15.2%	11	10.5%	4	3.8%	31	29.5%	58	55.2%	8	7.6%	8	7.6%
Northwest Kansas	165	26	15.8%	8	4.8%	4	2.4%	38	23.0%	100	60.6%	22	13.3%	5	3.0%
Reno	236	52	22.0%	20	8.5%	4	1.7%	76	32.2%	141	59.7%	16	6.8%	3	1.3%
Riley	135	16	11.9%	2	1.5%	2	1.5%	20	14.8%	63	46.7%	48	35.6%	4	3.0%
Santa Fe Trail	143	29	20.3%	5	3.5%	3	2.1%	37	25.9%	51	35.7%	45	31.5%	10	7.0%
Sedgwick	1105	290	26.2%	153	13.8%	75	6.8%	518	46.9%	534	48.3%	18	1.6%	35	3.2%
Shawnee	395	48	12.2%	20	5.1%	1	0.3%	69	17.5%	290	73.4%	11	2.8%	25	6.3%
South Central Kansas	80	9	11.3%	3	3.8%	2	2.5%	14	17.5%	41	51.3%	18	22.5%	7	8.8%
Sumner	53	10	18.9%	8	15.1%	1	1.9%	19	35.8%	29	54.7%	4	7.5%	1	1.9%
Unified Government	468	97	20.7%	45	9.6%	5	1.1%	147	31.4%	284	60.7%	25	5.3%	12	2.6%
STATEWIDE	5463	993	18.2%	481	8.8%	147	2.7%	1621	29.7%	3046	55.8%	532	9.7%	264	4.8%

Section III: Number and Percentage of Community Corrections Offender Files Closed by Type Fiscal Years 2007 – 2014

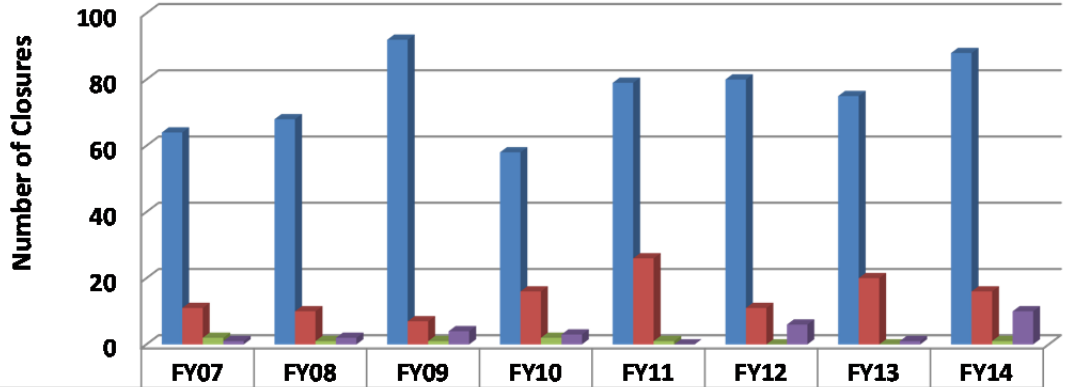
The data in the two charts consists of the number of percentage of offenders files by termination reason for fiscal years 2007 through 2014 for each agency and statewide. On the left-hand side of the chart, the fiscal year followed by “N” represents the total number of offender files closed.

The final chart lists all the agency’s Successful completion goal for FY2014. It provides the number and percentage of offenders who completed as Revoked and as Successful (all other terminations besides revoked). The chart contains whether the agency did or did not meet their goal for FY2014 followed by their goal for FY2015.

All information for Section III was pulled from the Court Case Sentencing Activity Report run on 7/11/14 at 7:08:09am.

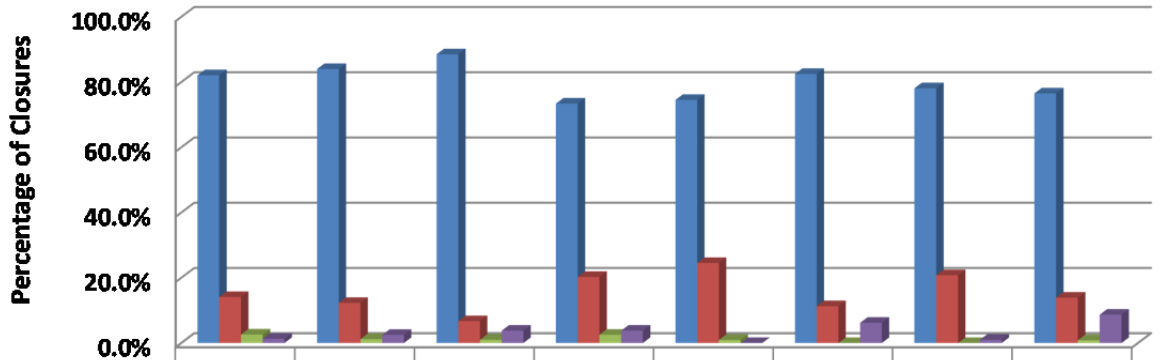
2nd District

FY07 (N=78)
 FY08 (N=81)
 FY09 (N=104)
 FY10 (N=79)
 FY11 (N=106)
 FY12 (N=97)
 FY13 (N=96)
 FY14 (N=115)



	FY07	FY08	FY09	FY10	FY11	FY12	FY13	FY14
Successful	64	68	92	58	79	80	75	88
Total Revocation Closures	11	10	7	16	26	11	20	16
Unsuccessful	2	1	1	2	1	0	0	1
Other (Death/Not Sent. to CC)	1	2	4	3	0	6	1	10

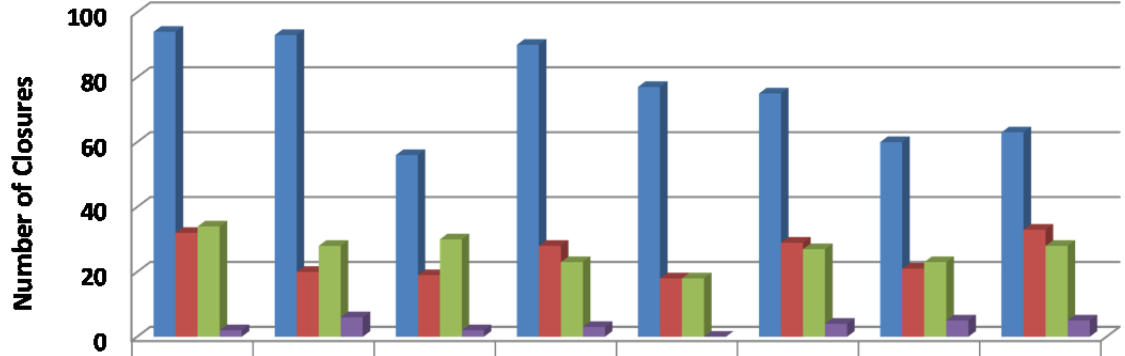
2nd District



	FY07	FY08	FY09	FY10	FY11	FY12	FY13	FY14
Successful	82.1%	84.0%	88.5%	73.4%	74.5%	82.5%	78.1%	76.5%
Total Revocation Closures	14.1%	12.3%	6.7%	20.3%	24.5%	11.3%	20.8%	13.9%
Unsuccessful	2.6%	1.2%	1.0%	2.5%	0.9%	0.0%	0.0%	0.9%
Other (Death/Not Sent. to CC)	1.3%	2.5%	3.8%	3.8%	0.0%	6.2%	1.0%	8.7%

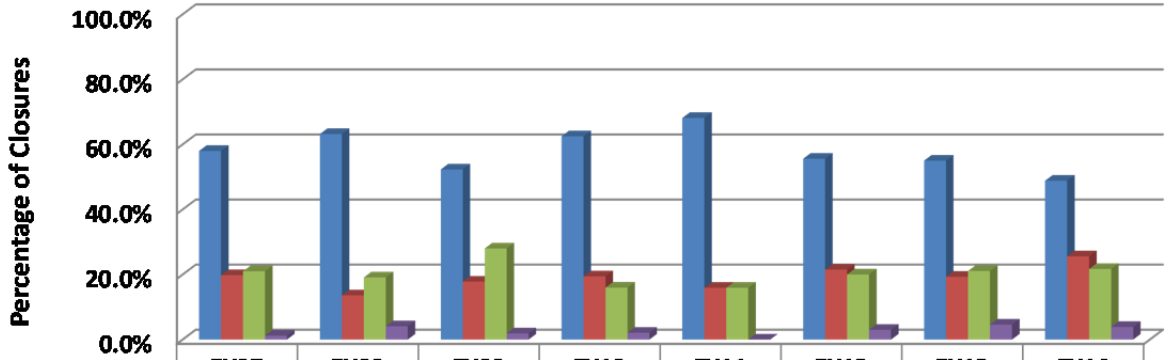
4th District

FY07 (N=162)
 FY08 (N=147)
 FY09 (N=107)
 FY10 (N=144)
 FY11 (N=113)
 FY12 (N=135)
 FY13 (N=109)
 FY14 (N=129)



	FY07	FY08	FY09	FY10	FY11	FY12	FY13	FY14
Successful	94	93	56	90	77	75	60	63
Total Revocation Closures	32	20	19	28	18	29	21	33
Unsuccessful	34	28	30	23	18	27	23	28
Other (Death/Not Sent. to CC)	2	6	2	3	0	4	5	5

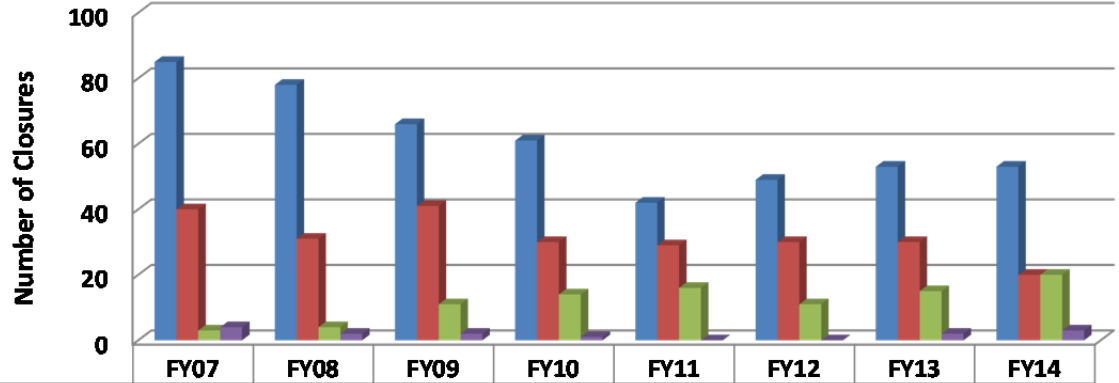
4th District



	FY07	FY08	FY09	FY10	FY11	FY12	FY13	FY14
Successful	58.0%	63.2%	52.3%	62.5%	68.1%	55.6%	55.0%	48.8%
Total Revocation Closures	19.8%	13.6%	17.8%	19.4%	15.9%	21.5%	19.3%	25.6%
Unsuccessful	21.0%	19.1%	28.0%	16.0%	15.9%	20.0%	21.1%	21.7%
Other (Death/Not Sent. to CC)	1.2%	4.1%	1.9%	2.1%	0.0%	3.0%	4.6%	3.9%

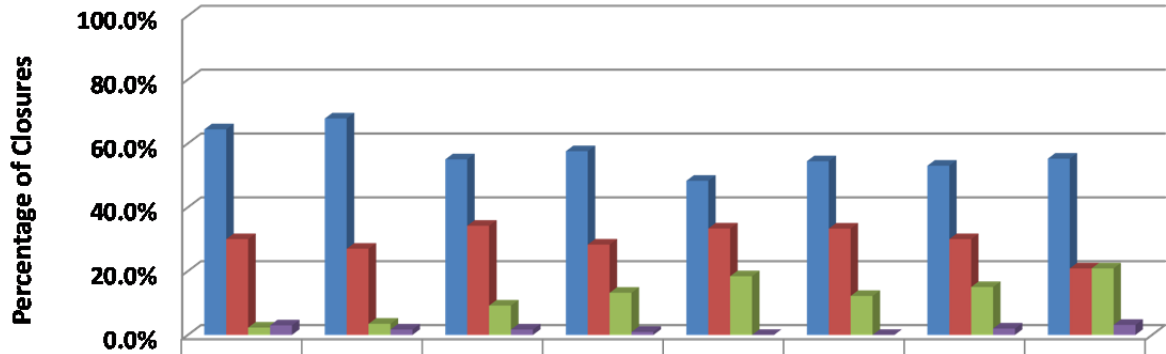
5th District

FY07 (N=132)
 FY08 (N=115)
 FY09 (N=120)
 FY10 (N=106)
 FY11 (N=87)
 FY12 (N=90)
 FY13 (N=100)
 FY14 (N=96)



	FY07	FY08	FY09	FY10	FY11	FY12	FY13	FY14
Successful	85	78	66	61	42	49	53	53
Total Revocation Closures	40	31	41	30	29	30	30	20
Unsuccessful	3	4	11	14	16	11	15	20
Other (Death/Not Sent. to CC)	4	2	2	1	0	0	2	3

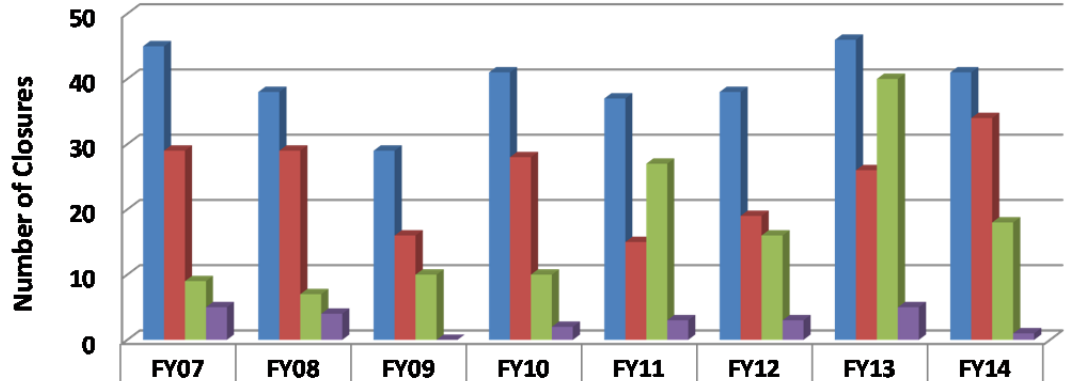
5th District



	FY07	FY08	FY09	FY10	FY11	FY12	FY13	FY14
Successful	64.4%	67.8%	55.0%	57.5%	48.3%	54.4%	53.0%	55.2%
Total Revocation Closures	30.0%	27.0%	34.2%	28.3%	33.3%	33.3%	30.0%	20.8%
Unsuccessful	2.3%	3.5%	9.2%	13.2%	18.4%	12.2%	15.0%	20.8%
Other (Death/Not Sent. to CC)	3.0%	1.7%	1.7%	0.9%	0.0%	0.0%	2.0%	3.1%

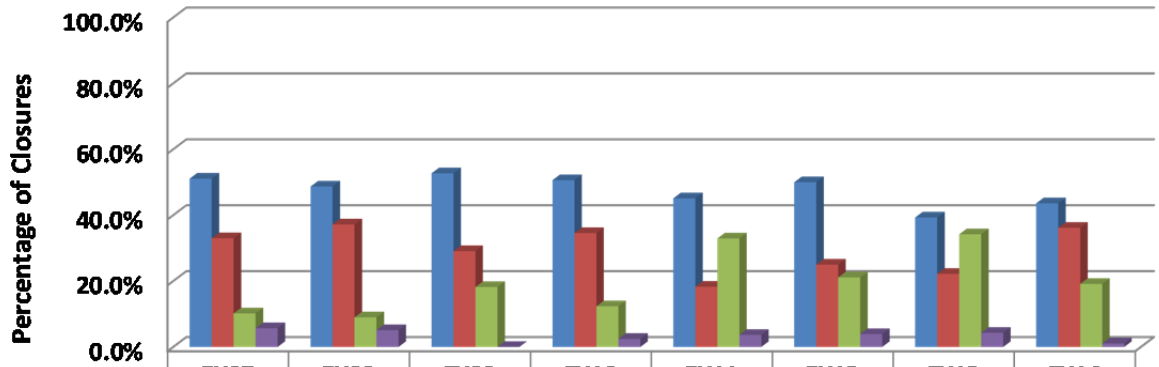
6th District

FY07 (N=88)
 FY08 (N=78)
 FY09 (N=55)
 FY10 (N=81)
 FY11 (N=82)
 FY12 (N=76)
 FY13 (N=117)
 FY14 (N=94)



	FY07	FY08	FY09	FY10	FY11	FY12	FY13	FY14
Successful	45	38	29	41	37	38	46	41
Total Revocation Closures	29	29	16	28	15	19	26	34
Unsuccessful	9	7	10	10	27	16	40	18
Other (Death/Not Sent. to CC)	5	4	0	2	3	3	5	1

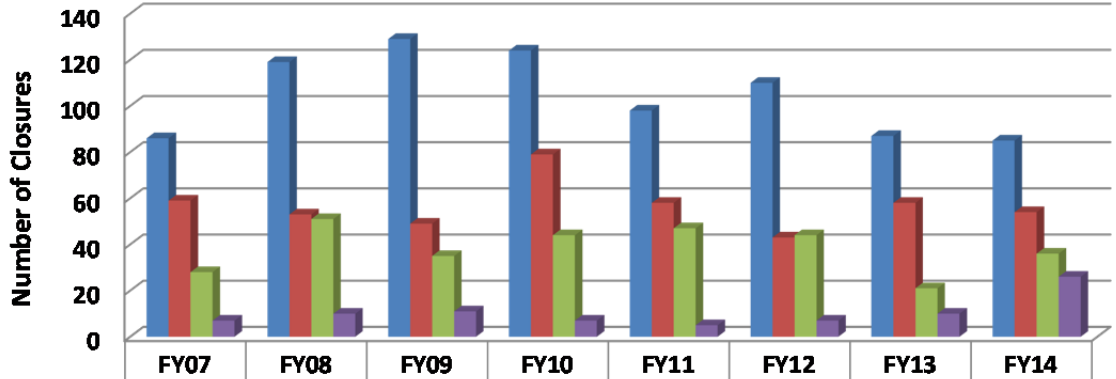
6th District



	FY07	FY08	FY09	FY10	FY11	FY12	FY13	FY14
Successful	51.1%	48.7%	52.7%	50.6%	45.1%	50.0%	39.3%	43.6%
Total Revocation Closures	33.0%	37.2%	29.1%	34.6%	18.3%	25.0%	22.2%	36.2%
Unsuccessful	10.2%	9.0%	18.2%	12.3%	32.9%	21.1%	34.2%	19.1%
Other (Death/Not Sent. to CC)	5.7%	5.1%	0.0%	2.5%	3.7%	3.9%	4.3%	1.1%

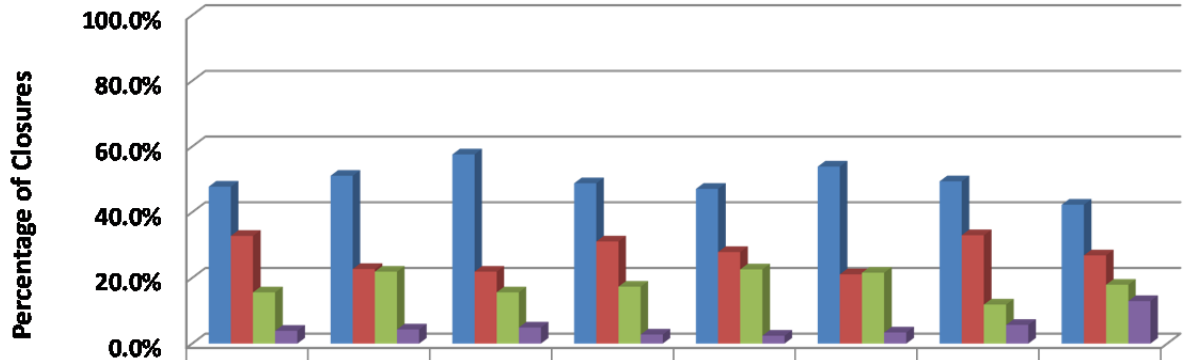
8th District

FY07 (N=180)
 FY08 (N=233)
 FY09 (N=224)
 FY10 (N=254)
 FY11 (N=208)
 FY12 (N=204)
 FY13 (N=176)
 FY14 (N=201)



	FY07	FY08	FY09	FY10	FY11	FY12	FY13	FY14
Successful	86	119	129	124	98	110	87	85
Total Revocation Closures	59	53	49	79	58	43	58	54
Unsuccessful	28	51	35	44	47	44	21	36
Other (Death/Not Sent. to CC)	7	10	11	7	5	7	10	26

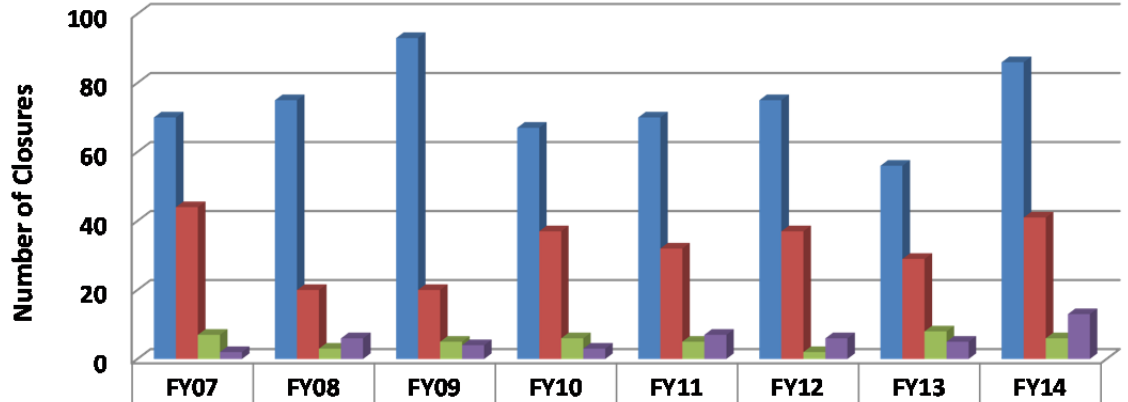
8th District



	FY07	FY08	FY09	FY10	FY11	FY12	FY13	FY14
Successful	47.8%	51.1%	57.6%	48.8%	47.1%	53.9%	49.4%	42.3%
Total Revocation Closures	32.8%	22.7%	21.9%	31.1%	27.9%	21.1%	33.0%	26.9%
Unsuccessful	15.6%	21.9%	15.6%	17.3%	22.6%	21.6%	11.9%	17.9%
Other (Death/Not Sent. to CC)	3.9%	4.3%	4.9%	2.8%	2.4%	3.4%	5.7%	12.9%

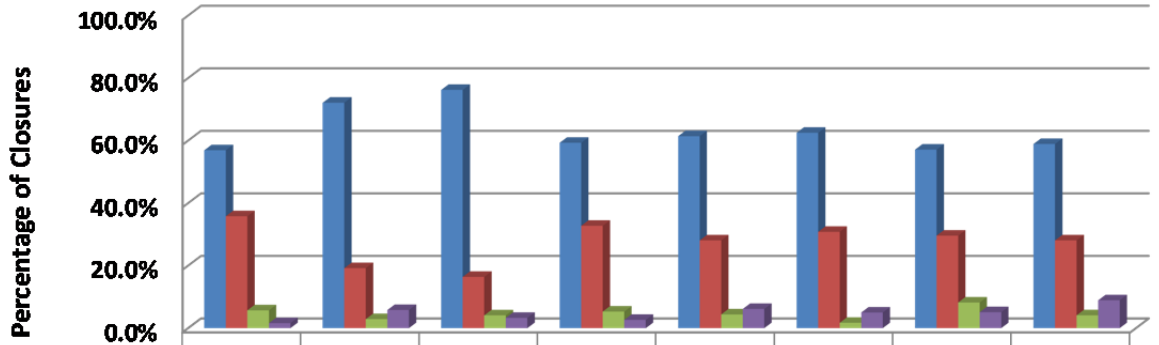
11th District

FY07 (N=123)
 FY08 (N=104)
 FY09 (N=122)
 FY10 (N=113)
 FY11 (N=114)
 FY12 (N=120)
 FY13 (N=98)
 FY14 (N=146)



	FY07	FY08	FY09	FY10	FY11	FY12	FY13	FY14
Successful	70	75	93	67	70	75	56	86
Total Revocation Closures	44	20	20	37	32	37	29	41
Unsuccessful	7	3	5	6	5	2	8	6
Other (Death/Not Sent. to CC)	2	6	4	3	7	6	5	13

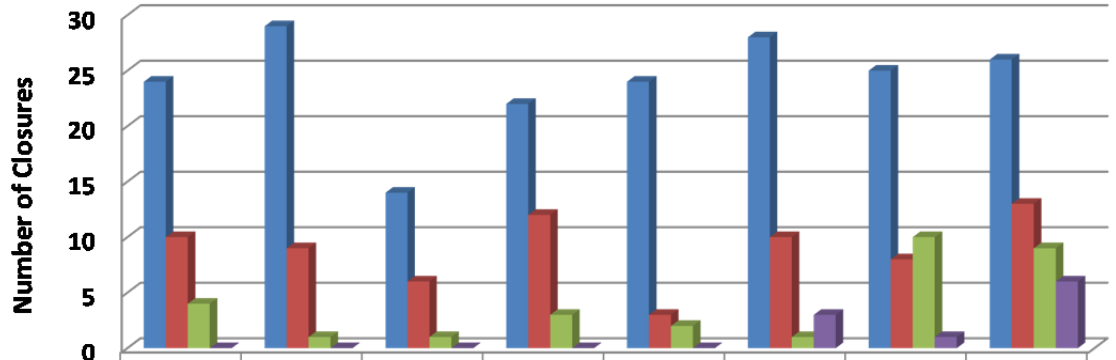
11th District



	FY07	FY08	FY09	FY10	FY11	FY12	FY13	FY14
Successful	56.9%	72.1%	76.2%	59.3%	61.4%	62.5%	57.1%	58.9%
Total Revocation Closures	35.8%	19.2%	16.4%	32.7%	28.1%	30.8%	29.6%	28.1%
Unsuccessful	5.7%	2.9%	4.1%	5.3%	4.4%	1.7%	8.2%	4.1%
Other (Death/Not Sent. to CC)	1.6%	5.8%	3.3%	2.7%	6.1%	5.0%	5.1%	8.9%

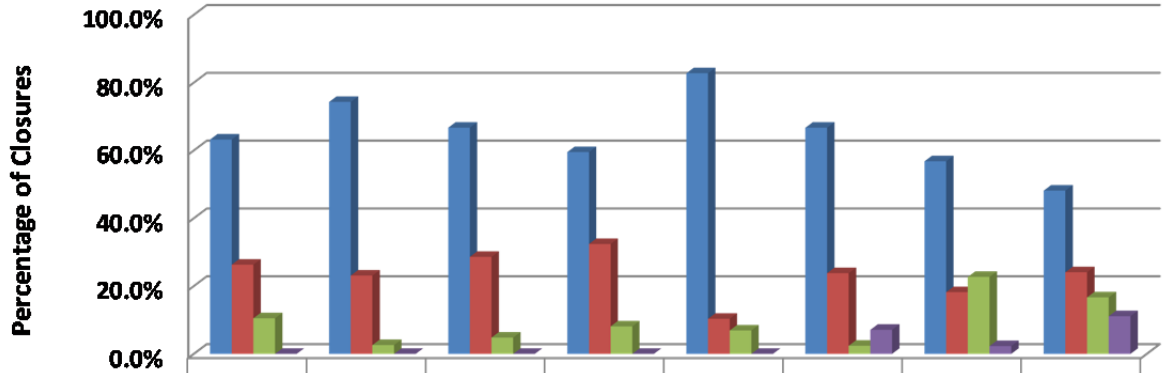
12th District

FY07 (N=38)
 FY08 (N=39)
 FY09 (N=21)
 FY10 (N=37)
 FY11 (N=29)
 FY12 (N=42)
 FY13 (N=44)
 FY14 (N=54)



	FY07	FY08	FY09	FY10	FY11	FY12	FY13	FY14
Successful	24	29	14	22	24	28	25	26
Total Revocation Closures	10	9	6	12	3	10	8	13
Unsuccessful	4	1	1	3	2	1	10	9
Other (Death/Not Sent. to CC)	0	0	0	0	0	3	1	6

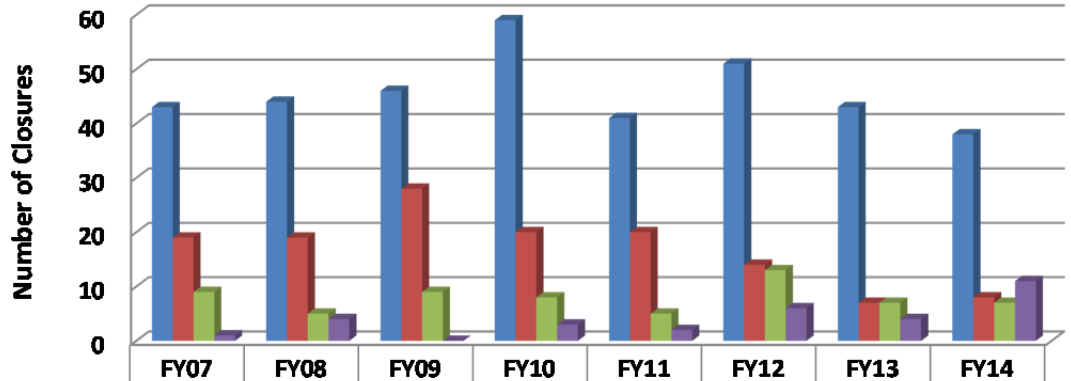
12th District



	FY07	FY08	FY09	FY10	FY11	FY12	FY13	FY14
Successful	63.2%	74.3%	66.7%	59.5%	82.8%	66.7%	56.8%	48.1%
Total Revocation Closures	26.3%	23.1%	28.6%	32.4%	10.3%	23.8%	18.2%	24.1%
Unsuccessful	10.5%	2.6%	4.8%	8.1%	6.9%	2.4%	22.7%	16.7%
Other (Death/Not Sent. to CC)	0.0%	0.0%	0.0%	0.0%	0.0%	7.1%	2.3%	11.1%

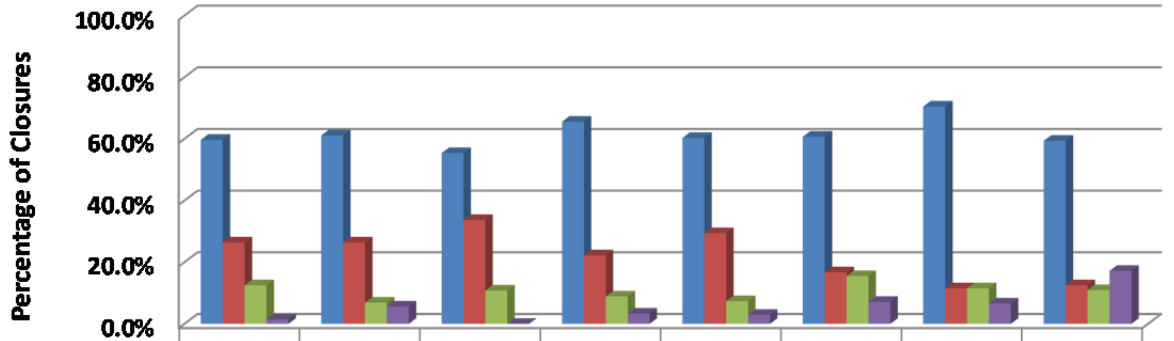
13th District

FY07 (N=72)
 FY08 (N=72)
 FY09 (N=83)
 FY10 (N=90)
 FY11 (N=68)
 FY12 (N=84)
 FY13 (N=61)
 FY14 (N=64)



	FY07	FY08	FY09	FY10	FY11	FY12	FY13	FY14
Successful	43	44	46	59	41	51	43	38
Total Revocation Closures	19	19	28	20	20	14	7	8
Unsuccessful	9	5	9	8	5	13	7	7
Other (Death/Not Sent. to CC)	1	4	0	3	2	6	4	11

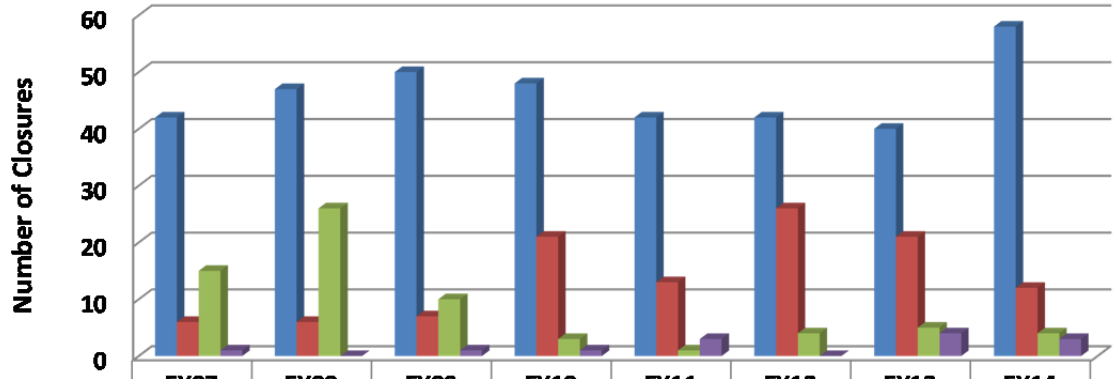
13th District



	FY07	FY08	FY09	FY10	FY11	FY12	FY13	FY14
Successful	59.7%	61.1%	55.4%	65.6%	60.3%	60.7%	70.5%	59.4%
Total Revocation Closures	26.4%	26.4%	33.7%	22.2%	29.4%	16.7%	11.5%	12.5%
Unsuccessful	12.5%	6.9%	10.8%	8.9%	7.4%	15.5%	11.5%	10.9%
Other (Death/Not Sent. to CC)	1.4%	5.6%	0.0%	3.3%	2.9%	7.1%	6.6%	17.2%

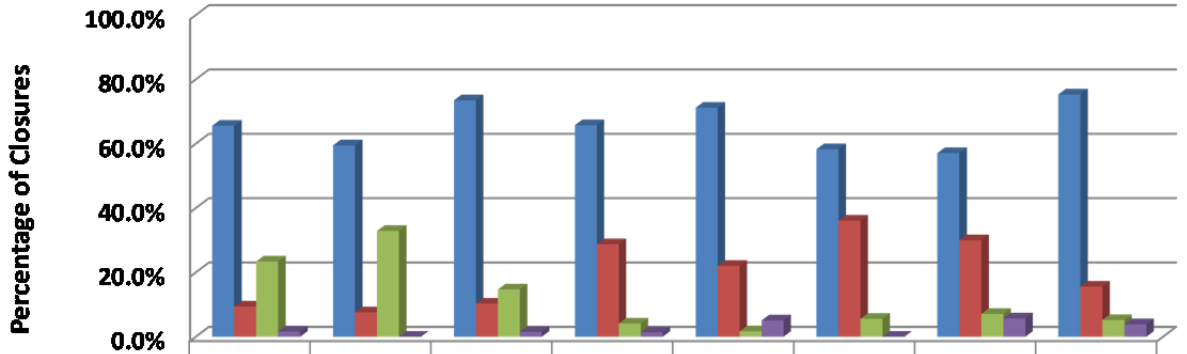
22nd District

FY07 (N=64)
 FY08 (N=79)
 FY09 (N=68)
 FY10 (N=73)
 FY11 (N=59)
 FY12 (N=72)
 FY13 (N=70)
 FY14 (N=77)



	FY07	FY08	FY09	FY10	FY11	FY12	FY13	FY14
Successful	42	47	50	48	42	42	40	58
Total Revocation Closures	6	6	7	21	13	26	21	12
Unsuccessful	15	26	10	3	1	4	5	4
Other (Death/Not Sent. to CC)	1	0	1	1	3	0	4	3

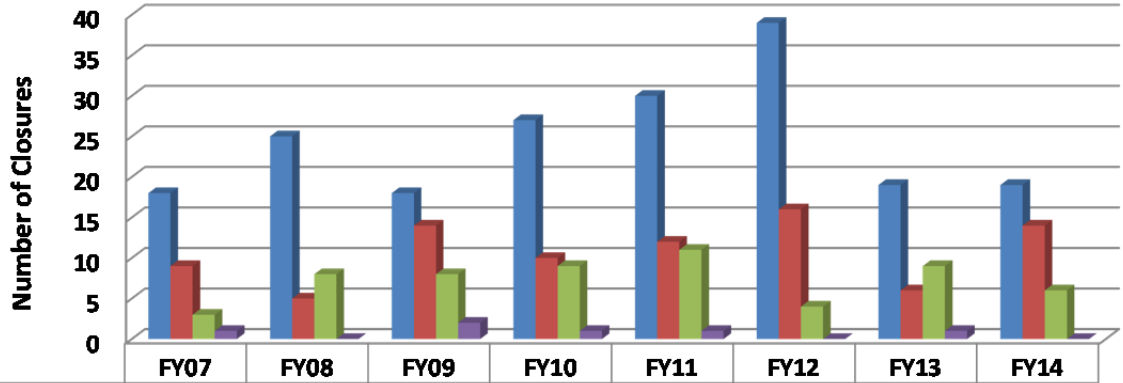
22nd District



	FY07	FY08	FY09	FY10	FY11	FY12	FY13	FY14
Successful	65.6%	59.5%	73.5%	65.8%	71.2%	58.3%	57.1%	75.3%
Total Revocation Closures	9.4%	7.6%	10.3%	28.8%	22.0%	36.1%	30.0%	15.6%
Unsuccessful	23.4%	32.9%	14.7%	4.1%	1.7%	5.6%	7.1%	5.2%
Other (Death/Not Sent. to CC)	1.6%	0.0%	1.5%	1.4%	5.1%	0.0%	5.7%	3.9%

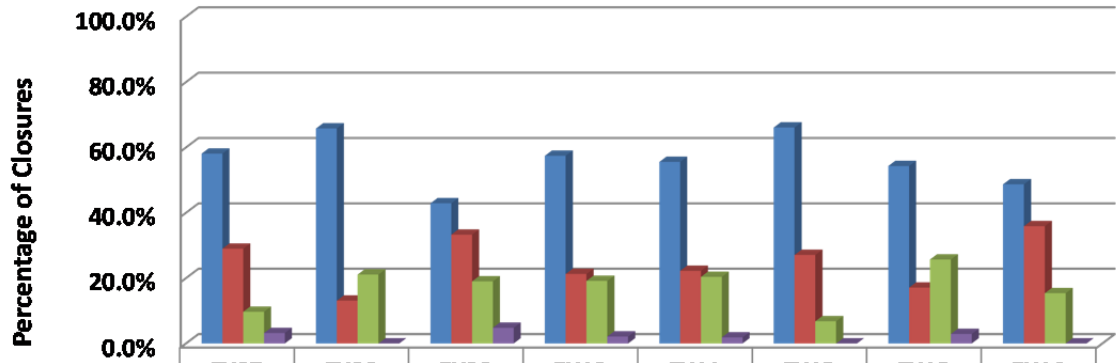
24th District

FY07 (N=31)
 FY08 (N=38)
 FY09 (N=42)
 FY10 (N=47)
 FY11 (N=54)
 FY12 (N=59)
 FY13 (N=35)
 FY14 (N=39)



	FY07	FY08	FY09	FY10	FY11	FY12	FY13	FY14
Successful	18	25	18	27	30	39	19	19
Total Revocation Closures	9	5	14	10	12	16	6	14
Unsuccessful	3	8	8	9	11	4	9	6
Other (Death/Not Sent to CC)	1	0	2	1	1	0	1	0

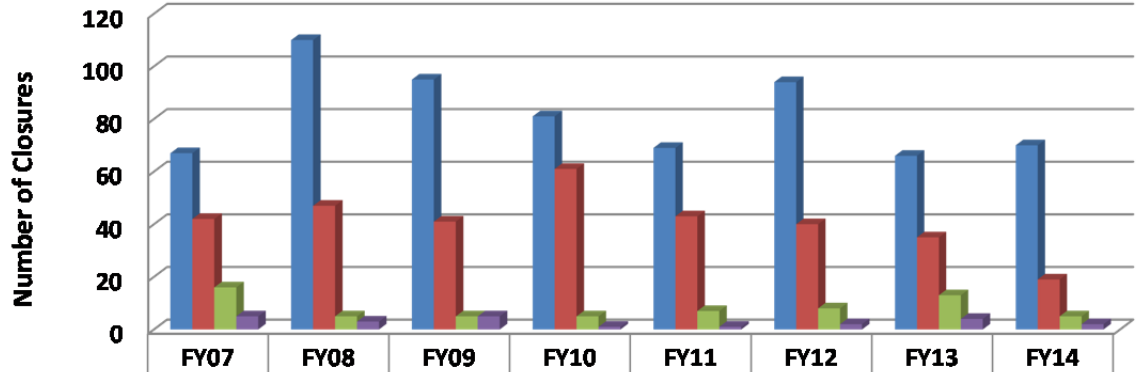
24th District



	FY07	FY08	FY09	FY10	FY11	FY12	FY13	FY14
Successful	58.1%	65.8%	42.9%	57.4%	55.6%	66.1%	54.3%	48.7%
Total Revocation Closures	29.0%	13.1%	33.3%	21.3%	22.2%	27.1%	17.1%	35.9%
Unsuccessful	9.7%	21.1%	19.0%	19.1%	20.4%	6.8%	25.7%	15.4%
Other (Death/Not Sent. to CC)	3.2%	0.0%	4.8%	2.1%	1.9%	0.0%	2.9%	0.0%

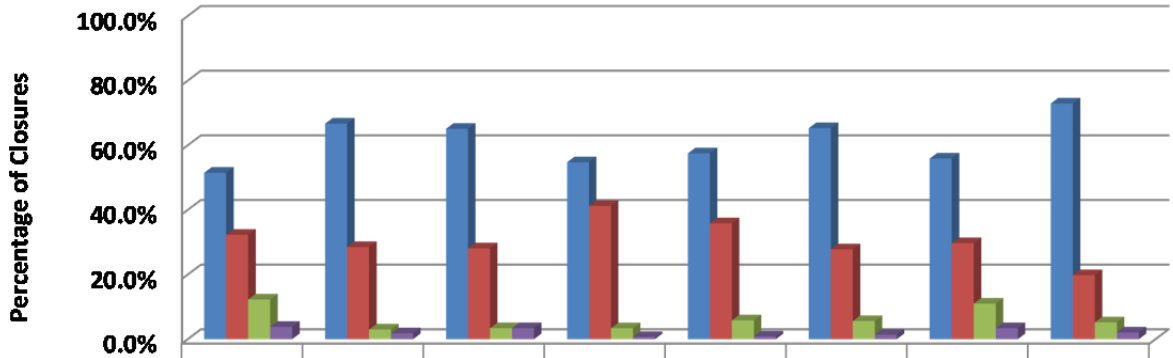
25th District

FY07 (N=130)
 FY08 (N=165)
 FY09 (N=146)
 FY10 (N=148)
 FY11 (N=120)
 FY12 (N=144)
 FY13 (N=118)
 FY14 (N=96)



	FY07	FY08	FY09	FY10	FY11	FY12	FY13	FY14
Successful	67	110	95	81	69	94	66	70
Total Revocation Closures	42	47	41	61	43	40	35	19
Unsuccessful	16	5	5	5	7	8	13	5
Other (Death/Not Sent. to CC)	5	3	5	1	1	2	4	2

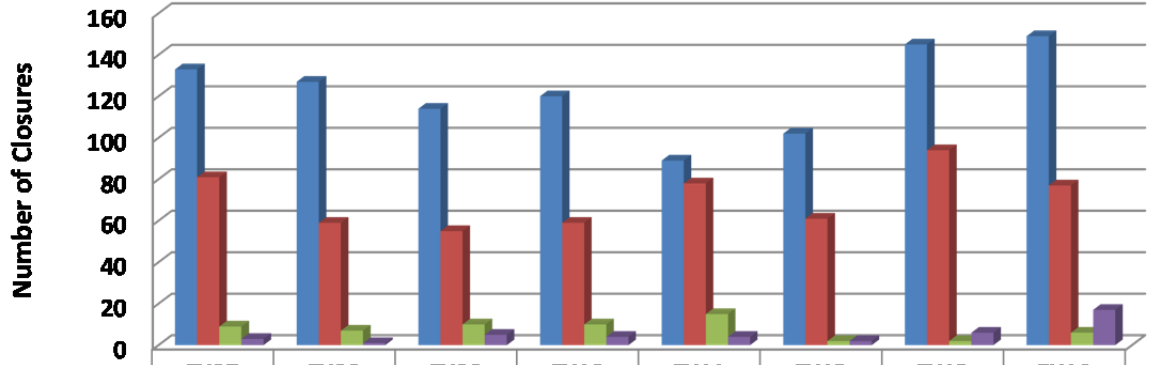
25th District



	FY07	FY08	FY09	FY10	FY11	FY12	FY13	FY14
Successful	51.5%	66.7%	65.1%	54.7%	57.5%	65.3%	55.9%	72.9%
Total Revocation Closures	32.3%	28.5%	28.1%	41.2%	35.8%	27.8%	29.7%	19.8%
Unsuccessful	12.3%	3.0%	3.4%	3.4%	5.8%	5.6%	11.0%	5.2%
Other (Death/Not Sent. to CC)	3.8%	1.8%	3.4%	0.7%	0.8%	1.4%	3.4%	2.1%

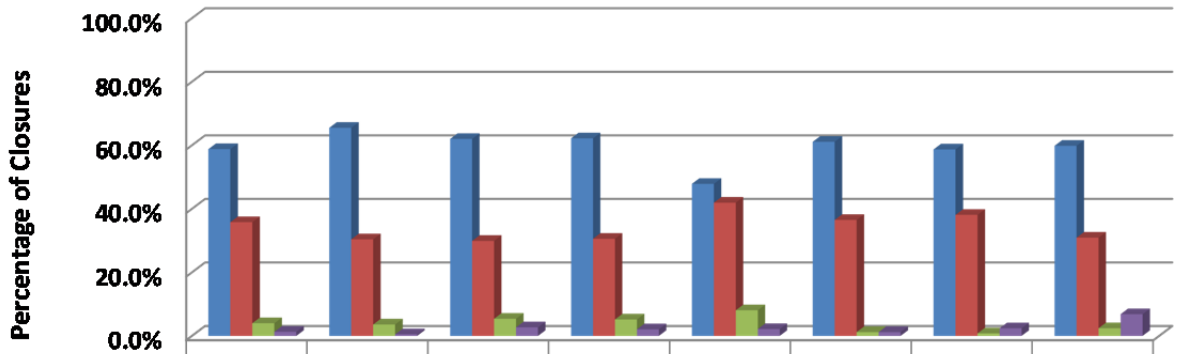
28th District

FY07 (N=226)
 FY08 (N=194)
 FY09 (N=184)
 FY10 (N=193)
 FY11 (N=186)
 FY12 (N=167)
 FY13 (N=247)
 FY14 (N=249)



	FY07	FY08	FY09	FY10	FY11	FY12	FY13	FY14
Successful	133	127	114	120	89	102	145	149
Total Revocation Closures	81	59	55	59	78	61	94	77
Unsuccessful	9	7	10	10	15	2	2	6
Other (Death/Not Sent. to CC)	3	1	5	4	4	2	6	17

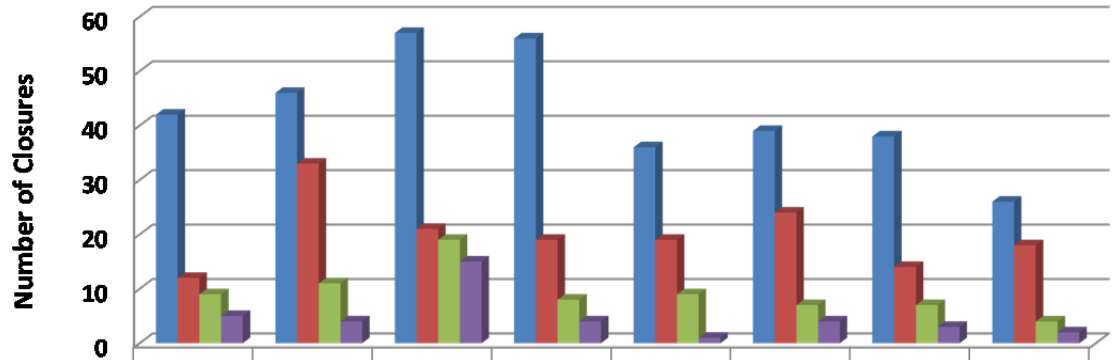
28th District



	FY07	FY08	FY09	FY10	FY11	FY12	FY13	FY14
Successful	58.8%	65.5%	62.0%	62.2%	47.8%	61.1%	58.7%	59.8%
Total Revocation Closures	35.8%	30.4%	29.9%	30.6%	41.9%	36.5%	38.1%	30.9%
Unsuccessful	4.0%	3.6%	5.4%	5.2%	8.1%	1.2%	0.8%	2.4%
Other (Death/Not Sent. to CC)	1.3%	0.5%	2.7%	2.1%	2.2%	1.2%	2.4%	6.8%

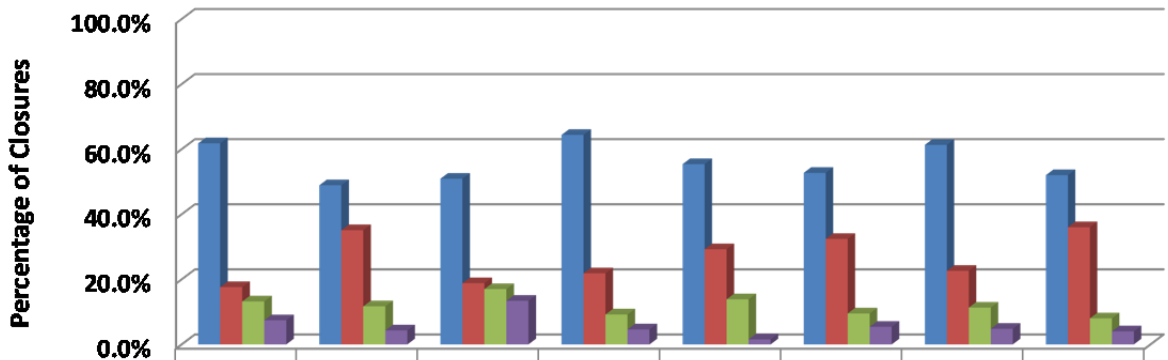
31st District

FY07 (N=68)
 FY08 (N=94)
 FY09 (N=112)
 FY10 (N=87)
 FY11 (N=65)
 FY12 (N=74)
 FY13 (N=62)
 FY14 (N=50)



	FY07	FY08	FY09	FY10	FY11	FY12	FY13	FY14
Successful	42	46	57	56	36	39	38	26
Total Revocation Closures	12	33	21	19	19	24	14	18
Unsuccessful	9	11	19	8	9	7	7	4
Other (Death/Not Sent. to CC)	5	4	15	4	1	4	3	2

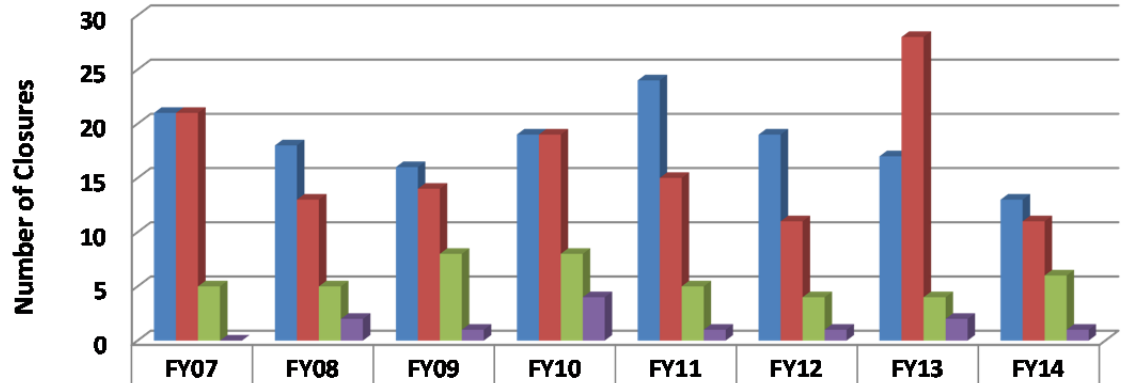
31st District



	FY07	FY08	FY09	FY10	FY11	FY12	FY13	FY14
Successful	61.8%	48.9%	50.9%	64.4%	55.4%	52.7%	61.3%	52.0%
Total Revocation Closures	17.6%	35.1%	18.8%	21.8%	29.2%	32.4%	22.6%	36.0%
Unsuccessful	13.2%	11.7%	17.0%	9.2%	13.8%	9.5%	11.3%	8.0%
Other (Death/Not Sent. to CC)	7.4%	4.3%	13.4%	4.6%	1.5%	5.4%	4.8%	4.0%

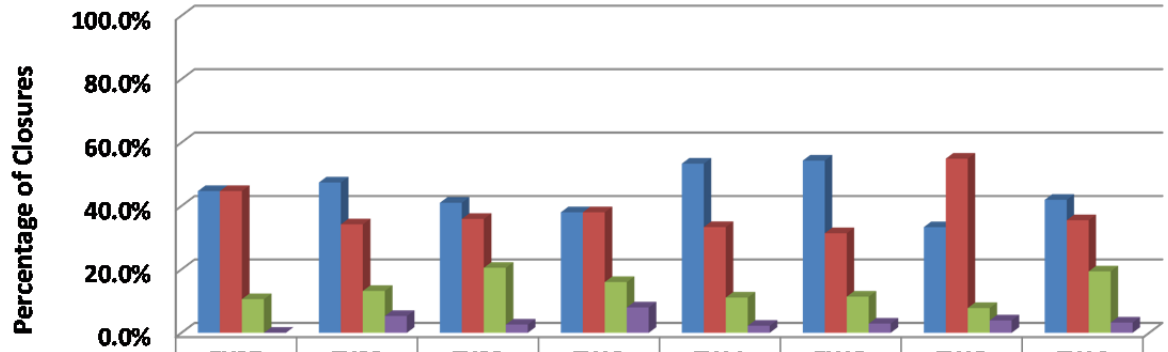
Atchison

FY07 (N=47)
 FY08 (N=38)
 FY09 (N=39)
 FY10 (N=50)
 FY11 (N=45)
 FY12 (N=35)
 FY13 (N=51)
 FY14 (N=31)



	FY07	FY08	FY09	FY10	FY11	FY12	FY13	FY14
Successful	21	18	16	19	24	19	17	13
Total Revocation Closures	21	13	14	19	15	11	28	11
Unsuccessful	5	5	8	8	5	4	4	6
Other (Death/Not Sent. to CC)	0	2	1	4	1	1	2	1

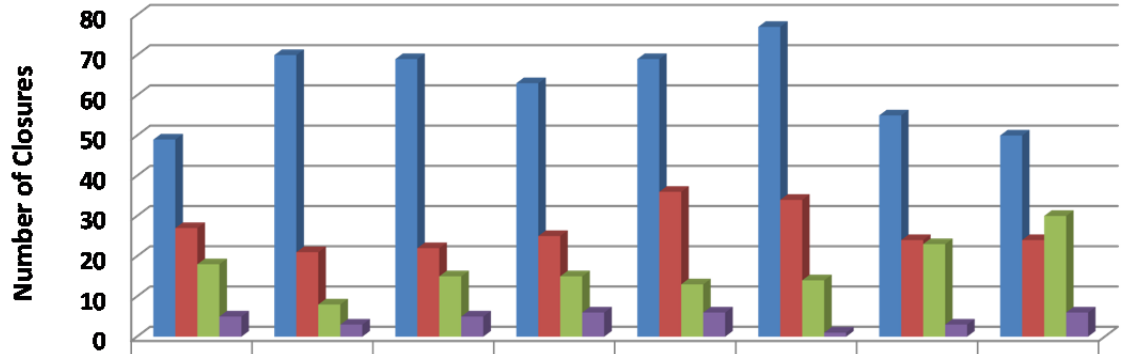
Atchison



	FY07	FY08	FY09	FY10	FY11	FY12	FY13	FY14
Successful	44.7%	47.4%	41.0%	38.0%	53.3%	54.3%	33.3%	41.9%
Total Revocation Closures	44.7%	34.2%	35.9%	38.0%	33.3%	31.4%	54.9%	35.5%
Unsuccessful	10.6%	13.2%	20.5%	16.0%	11.1%	11.4%	7.8%	19.4%
Other (Death/Not Sent. to CC)	0.0%	5.3%	2.6%	8.0%	2.2%	2.9%	3.9%	3.2%

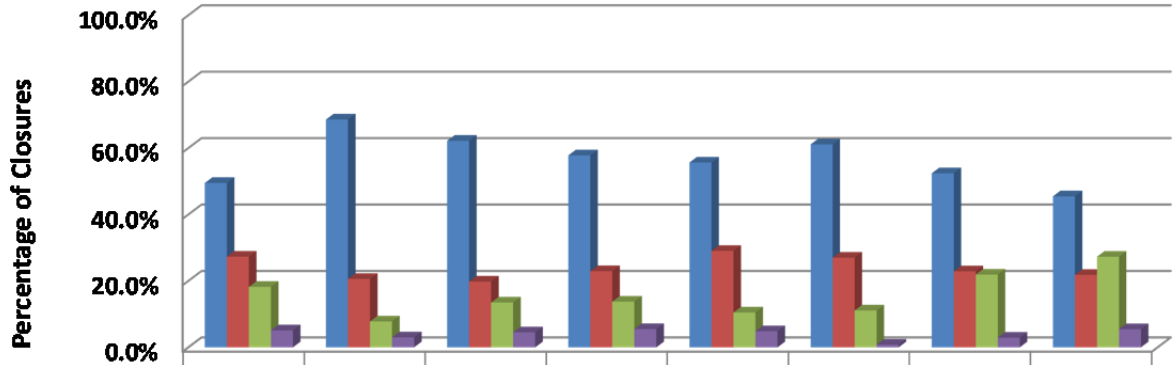
Central Kansas

FY07 (N=99)
 FY08 (N=102)
 FY09 (N=111)
 FY10 (N=109)
 FY11 (N=124)
 FY12 (N=126)
 FY13 (N=105)
 FY14 (N=110)



	FY07	FY08	FY09	FY10	FY11	FY12	FY13	FY14
Successful	49	70	69	63	69	77	55	50
Total Revocation Closures	27	21	22	25	36	34	24	24
Unsuccessful	18	8	15	15	13	14	23	30
Other (Death/Not Sent. to CC)	5	3	5	6	6	1	3	6

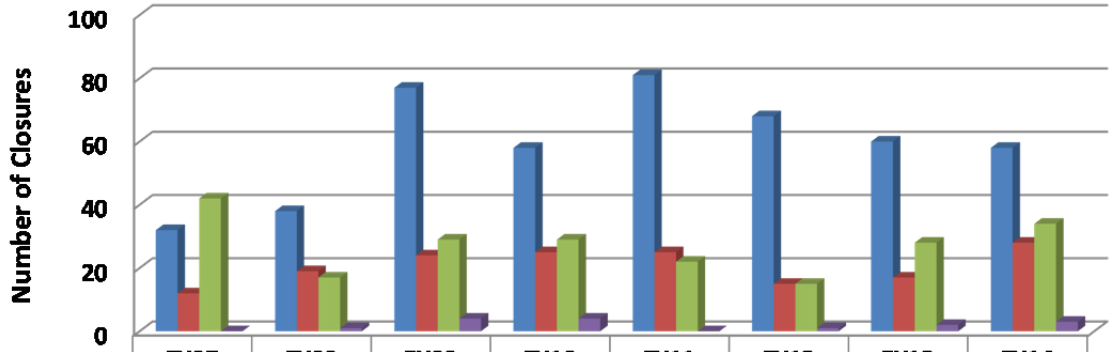
Central Kansas



	FY07	FY08	FY09	FY10	FY11	FY12	FY13	FY14
Successful	49.5%	68.6%	62.2%	57.8%	55.6%	61.1%	52.4%	45.5%
Total Revocation Closures	27.3%	20.6%	19.8%	22.9%	29.0%	27.0%	22.9%	21.8%
Unsuccessful	18.2%	7.8%	13.5%	13.8%	10.5%	11.1%	21.9%	27.3%
Other (Death/Not Sent. to CC)	5.1%	3.0%	4.5%	5.5%	4.8%	0.8%	2.9%	5.5%

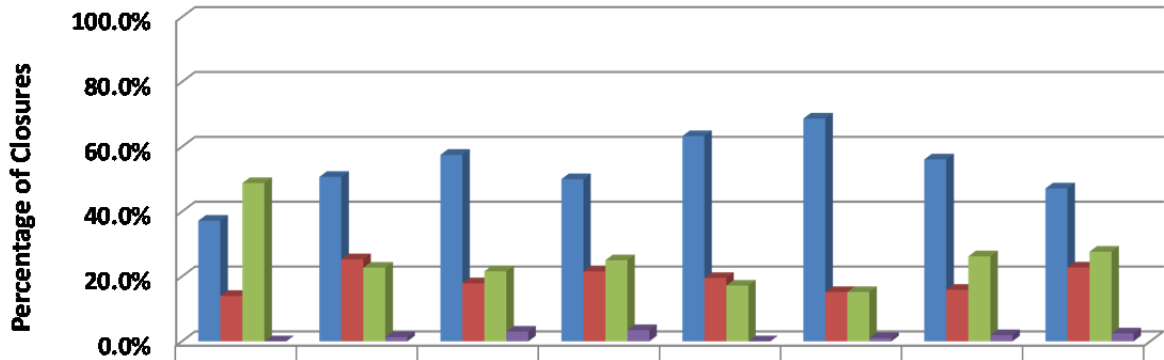
Cimarron Basin

FY07 (N=86)
 FY08 (N=75)
 FY09 (N=134)
 FY10 (N=116)
 FY11 (N=128)
 FY12 (N=99)
 FY13 (N=107)
 FY14 (N=123)



Successful	32	38	77	58	81	68	60	58
Total Revocation Closures	12	19	24	25	25	15	17	28
Unsuccessful	42	17	29	29	22	15	28	34
Other (Death/Not Sent. to CC)	0	1	4	4	0	1	2	3

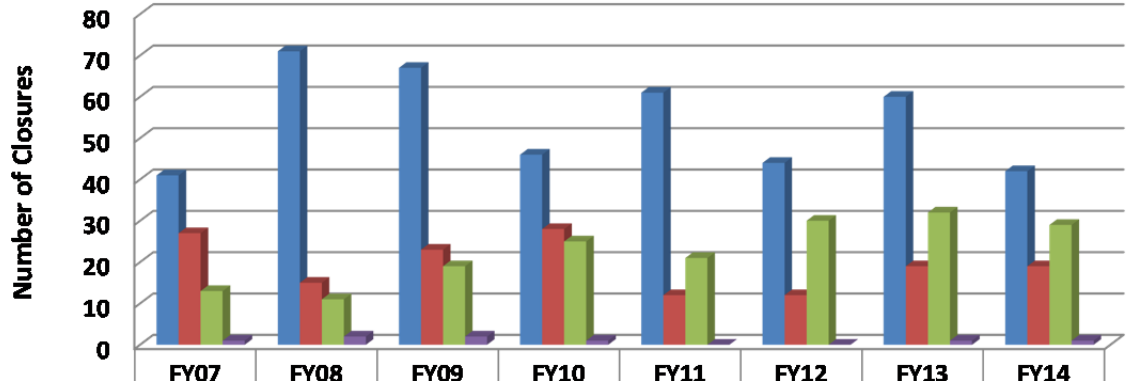
Cimarron Basin



Successful	37.2%	50.7%	57.5%	50.0%	63.3%	68.7%	56.1%	47.2%
Total Revocation Closures	14.0%	25.3%	17.9%	21.6%	19.5%	15.2%	15.9%	22.8%
Unsuccessful	48.8%	22.7%	21.6%	25.0%	17.2%	15.2%	26.2%	27.6%
Other (Death/Not Sent. to CC)	0.0%	1.3%	3.0%	3.4%	0.0%	1.0%	1.9%	2.4%

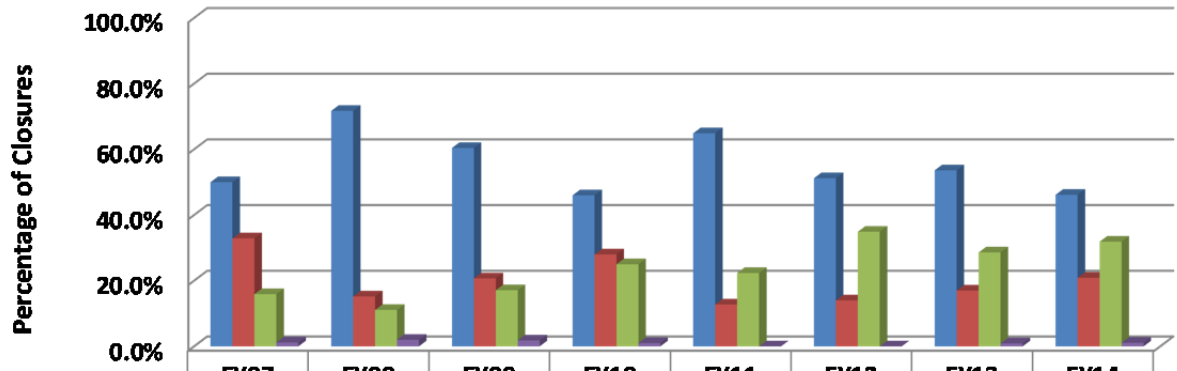
Cowley

FY07 (N=82)
 FY08 (N=99)
 FY09 (N=111)
 FY10 (N=100)
 FY11 (N=94)
 FY12 (N=86)
 FY13 (N=112)
 FY14 (N=91)



	FY07	FY08	FY09	FY10	FY11	FY12	FY13	FY14
Successful	41	71	67	46	61	44	60	42
Total Revocation Closures	27	15	23	28	12	12	19	19
Unsuccessful	13	11	19	25	21	30	32	29
Other (Death/Not Sent. to CC)	1	2	2	1	0	0	1	1

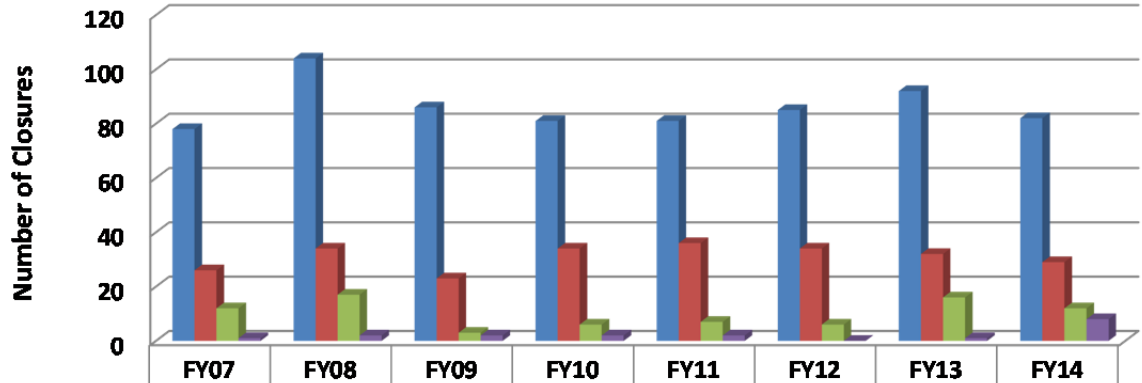
Cowley



	FY07	FY08	FY09	FY10	FY11	FY12	FY13	FY14
Successful	50.0%	71.7%	60.4%	46.0%	64.9%	51.2%	53.6%	46.2%
Total Revocation Closures	32.9%	15.2%	20.7%	28.0%	12.8%	14.0%	17.0%	20.9%
Unsuccessful	15.9%	11.1%	17.1%	25.0%	22.3%	34.9%	28.6%	31.9%
Other (Death/Not Sent. to CC)	1.2%	2.0%	1.8%	1.0%	0.0%	0.0%	0.9%	1.1%

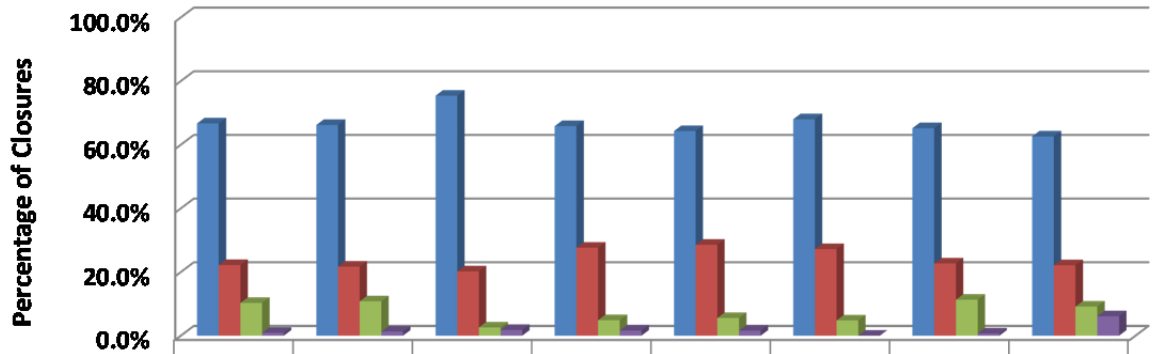
Douglas

FY07 (N=117)
 FY08 (N=157)
 FY09 (N=114)
 FY10 (N=123)
 FY11 (N=126)
 FY12 (N=125)
 FY13 (N=141)
 FY14 (N=131)



	FY07	FY08	FY09	FY10	FY11	FY12	FY13	FY14
Successful	78	104	86	81	81	85	92	82
Total Revocation Closures	26	34	23	34	36	34	32	29
Unsuccessful	12	17	3	6	7	6	16	12
Other (Death/Not Sent. to CC)	1	2	2	2	2	0	1	8

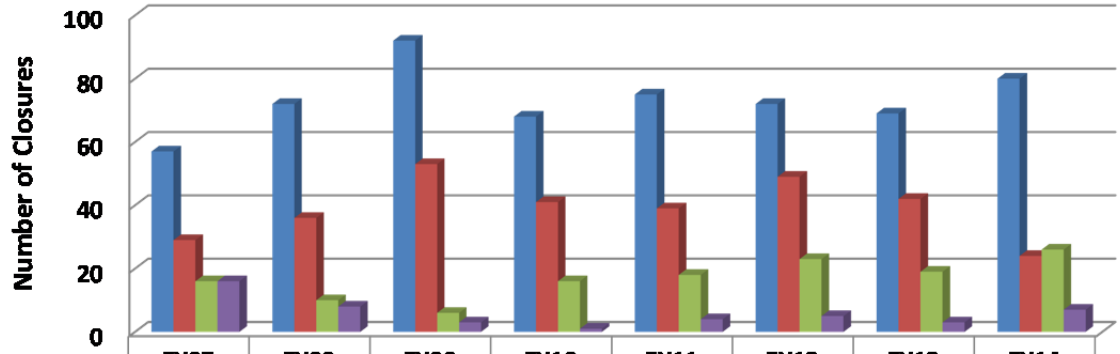
Douglas



	FY07	FY08	FY09	FY10	FY11	FY12	FY13	FY14
Successful	66.7%	66.2%	75.4%	65.9%	64.3%	68.0%	65.2%	62.6%
Total Revocation Closures	22.2%	21.7%	20.2%	27.6%	28.6%	27.2%	22.7%	22.1%
Unsuccessful	10.3%	10.8%	2.6%	4.9%	5.6%	4.8%	11.3%	9.2%
Other (Death/Not Sent. to CC)	0.9%	1.3%	1.8%	1.6%	1.6%	0.0%	0.7%	6.1%

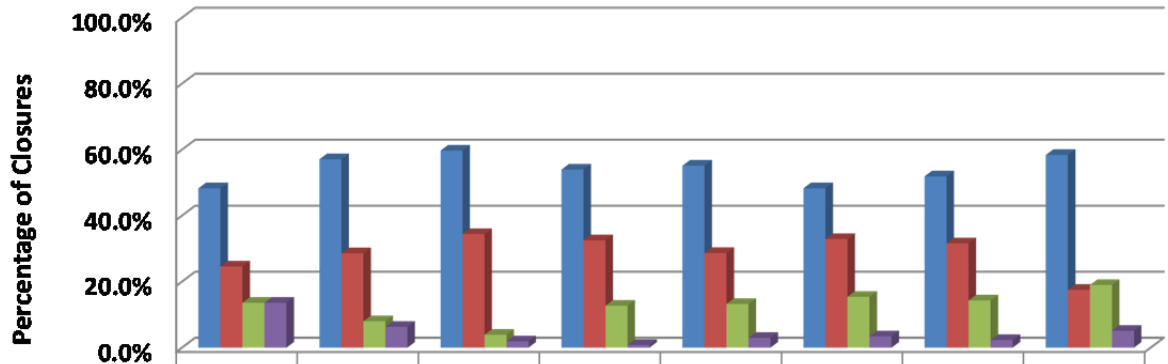
Harvey/McPherson

FY07 (N=118)
 FY08 (N=126)
 FY09 (N=154)
 FY10 (N=126)
 FY11 (N=136)
 FY12 (N=149)
 FY13 (N=133)
 FY14 (N=137)



	FY07	FY08	FY09	FY10	FY11	FY12	FY13	FY14
Successful	57	72	92	68	75	72	69	80
Total Revocation Closures	29	36	53	41	39	49	42	24
Unsuccessful	16	10	6	16	18	23	19	26
Other (Death/Not Sent. to CC)	16	8	3	1	4	5	3	7

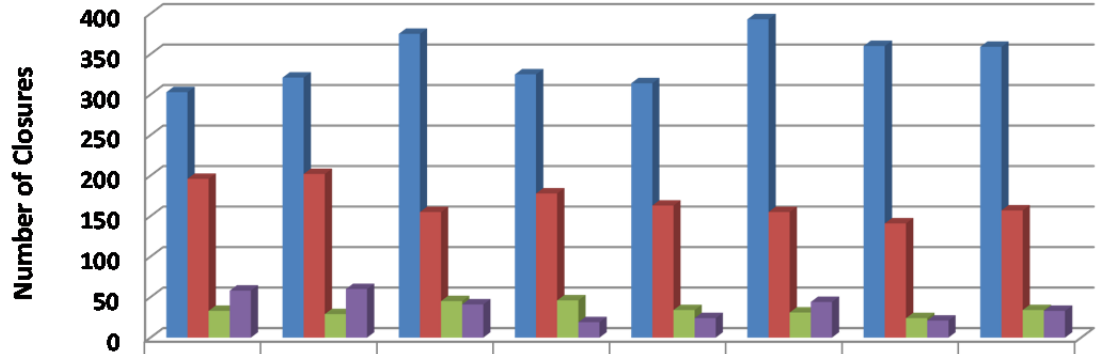
Harvey/McPherson



	FY07	FY08	FY09	FY10	FY11	FY12	FY13	FY14
Successful	48.3%	57.1%	59.7%	54.0%	55.1%	48.3%	51.9%	58.4%
Total Revocation Closures	24.6%	28.6%	34.4%	32.5%	28.7%	32.9%	31.6%	17.5%
Unsuccessful	13.6%	8.0%	3.9%	12.7%	13.2%	15.4%	14.3%	19.0%
Other (Death/Not Sent. to CC)	13.6%	6.3%	1.9%	0.8%	2.9%	3.4%	2.3%	5.1%

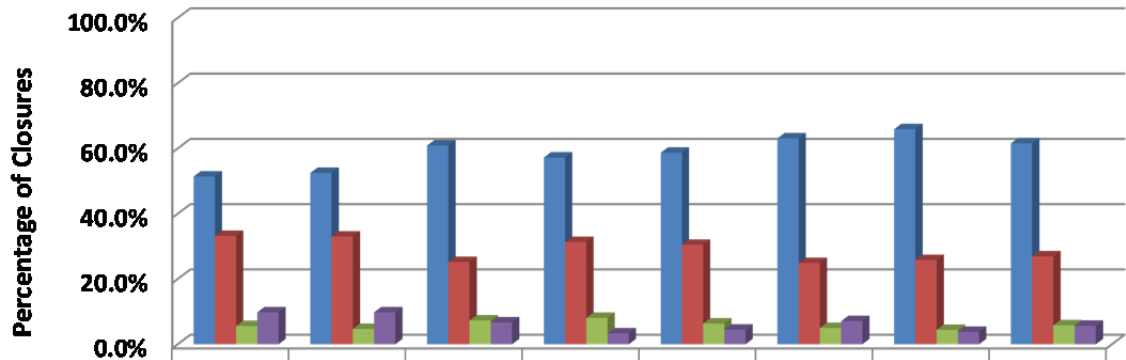
Johnson

FY07 (N=590)
 FY08 (N=612)
 FY09 (N=616)
 FY10 (N=568)
 FY11 (N=535)
 FY12 (N=623)
 FY13 (N=546)
 FY14 (N=583)



Successful	303	321	375	325	314	393	360	359
Total Revocation Closures	196	202	155	178	163	155	141	157
Unsuccessful	33	29	45	46	34	31	24	34
Other (Death/Not Sent. to CC)	58	60	41	19	24	44	21	33

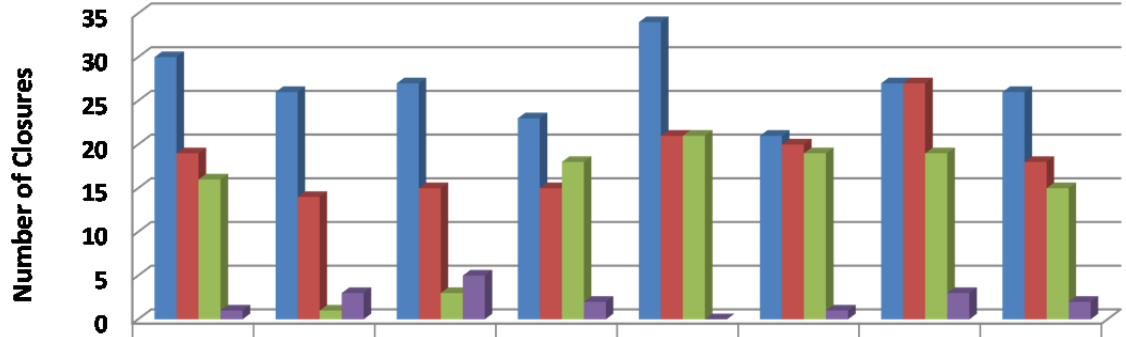
Johnson



Successful	51.4%	52.5%	60.9%	57.2%	58.7%	63.1%	65.9%	61.6%
Total Revocation Closures	33.2%	33.0%	25.2%	31.3%	30.5%	24.9%	25.8%	26.9%
Unsuccessful	5.6%	4.7%	7.3%	8.1%	6.4%	5.0%	4.4%	5.8%
Other (Death/Not Sent. to CC)	9.8%	9.8%	6.7%	3.3%	4.5%	7.1%	3.8%	5.7%

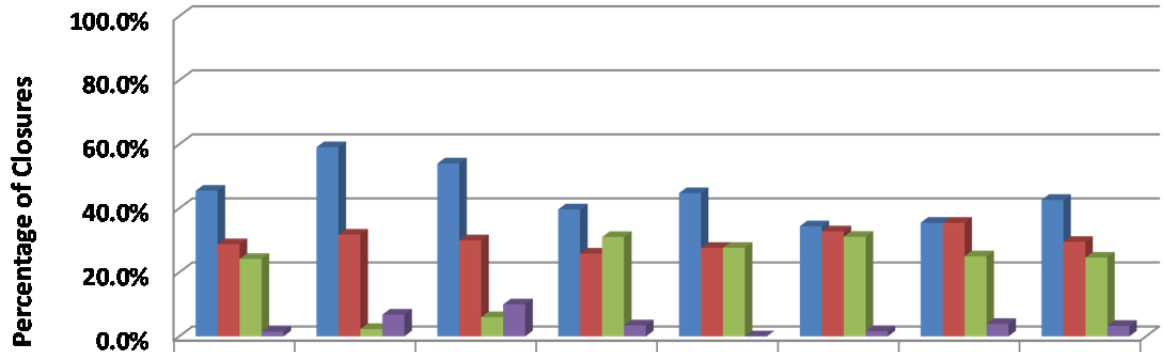
Leavenworth

FY07 (N=66)
 FY08 (N=44)
 FY09 (N=50)
 FY10 (N=50)
 FY11 (N=76)
 FY12 (N=61)
 FY13 (N=76)
 FY14 (N=61)



	FY07	FY08	FY09	FY10	FY11	FY12	FY13	FY14
Successful	30	26	27	23	34	21	27	26
Total Revocation Closures	19	14	15	15	21	20	27	18
Unsuccessful	16	1	3	18	21	19	19	15
Other (Death/Not Sent. to CC)	1	3	5	2	0	1	3	2

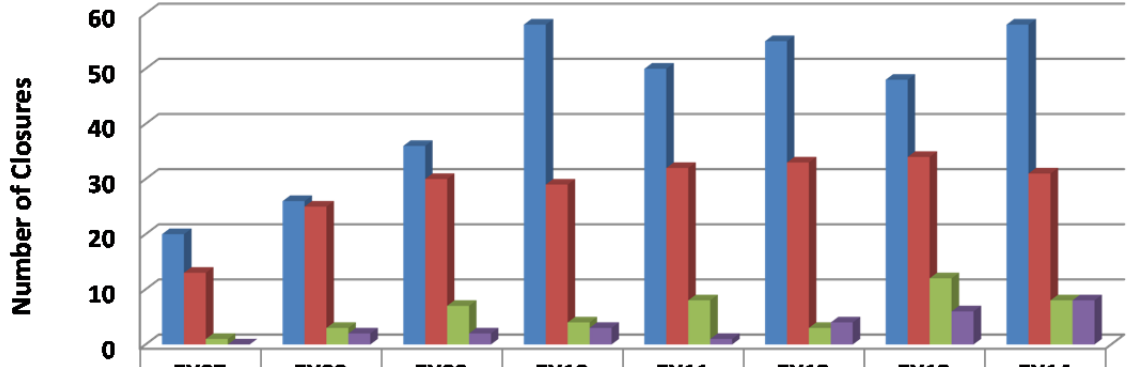
Leavenworth



	FY07	FY08	FY09	FY10	FY11	FY12	FY13	FY14
Successful	45.5%	59.1%	54.0%	39.7%	44.7%	34.4%	35.5%	42.6%
Total Revocation Closures	28.8%	31.8%	30.0%	25.9%	27.6%	32.8%	35.5%	29.5%
Unsuccessful	24.2%	2.3%	6.0%	31.0%	27.6%	31.1%	25.0%	24.6%
Other (Death/Not Sent. to CC)	1.5%	6.8%	10.0%	3.4%	0.0%	1.6%	3.9%	3.3%

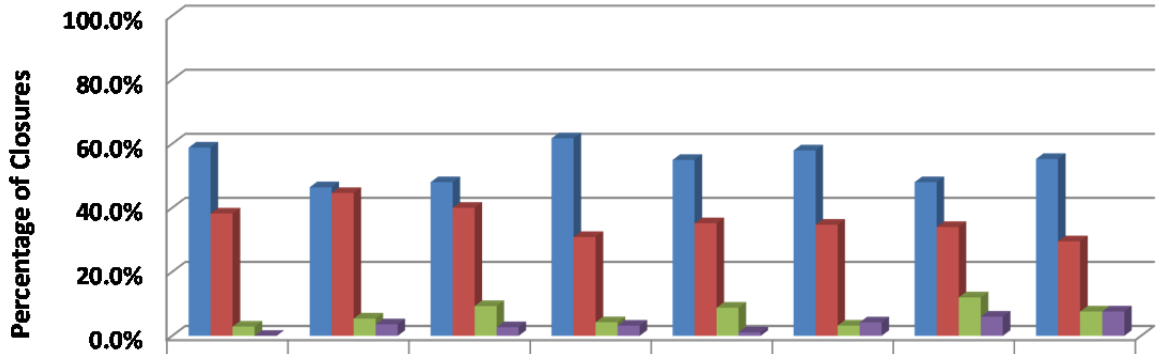
Montgomery

FY07 (N=34)
 FY08 (N=56)
 FY09 (N=75)
 FY10 (N=94)
 FY11 (N=91)
 FY12 (N=95)
 FY13 (N=100)
 FY14 (N=105)



	FY07	FY08	FY09	FY10	FY11	FY12	FY13	FY14
Successful	20	26	36	58	50	55	48	58
Total Revocation Closures	13	25	30	29	32	33	34	31
Unsuccessful	1	3	7	4	8	3	12	8
Other (Death/Not Sent. to CC)	0	2	2	3	1	4	6	8

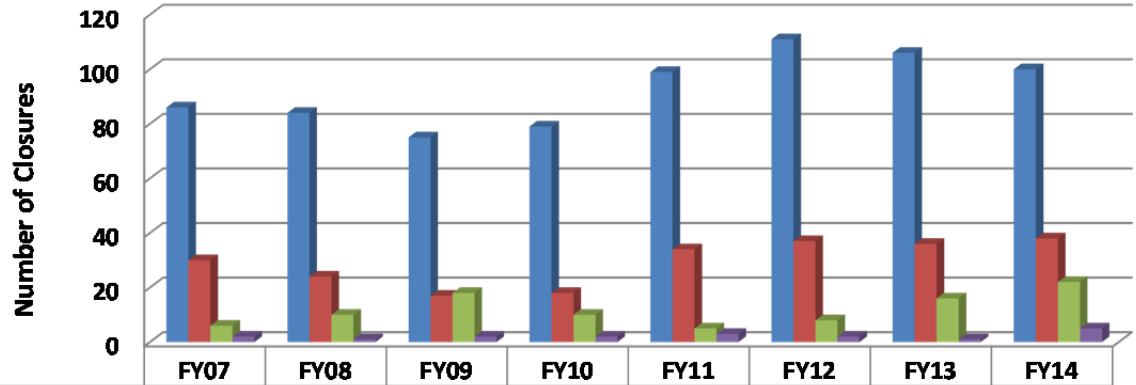
Montgomery



	FY07	FY08	FY09	FY10	FY11	FY12	FY13	FY14
Successful	58.8%	46.4%	48.0%	61.7%	54.9%	57.9%	48.0%	55.2%
Total Revocation Closures	38.2%	44.6%	40.0%	30.9%	35.2%	34.7%	34.0%	29.5%
Unsuccessful	2.9%	5.4%	9.3%	4.3%	8.8%	3.2%	12.0%	7.6%
Other (Death/Not Sent. to CC)	0.0%	3.6%	2.7%	3.2%	1.1%	4.2%	6.0%	7.6%

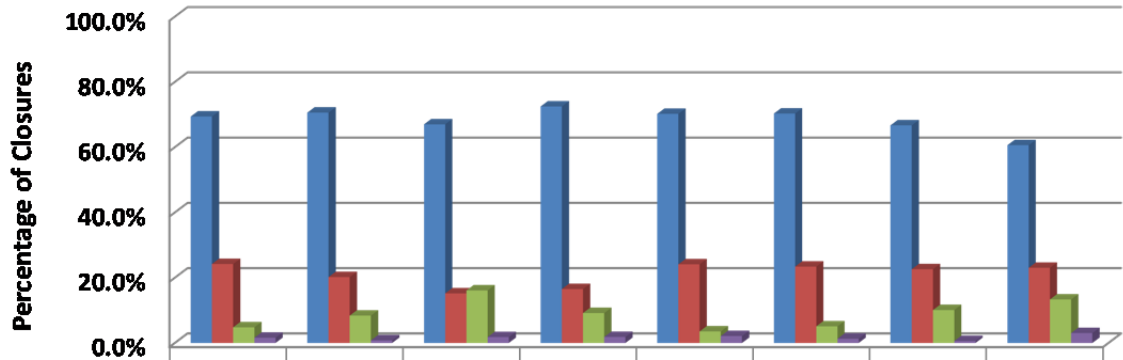
Northwest Kansas

FY07 (N=124)
 FY08 (N=119)
 FY09 (N=112)
 FY10 (N=109)
 FY11 (N=141)
 FY12 (N=158)
 FY13 (N=159)
 FY14 (N=165)



	FY07	FY08	FY09	FY10	FY11	FY12	FY13	FY14
Successful	86	84	75	79	99	111	106	100
Total Revocation Closures	30	24	17	18	34	37	36	38
Unsuccessful	6	10	18	10	5	8	16	22
Other (Death/Not Sent. to CC)	2	1	2	2	3	2	1	5

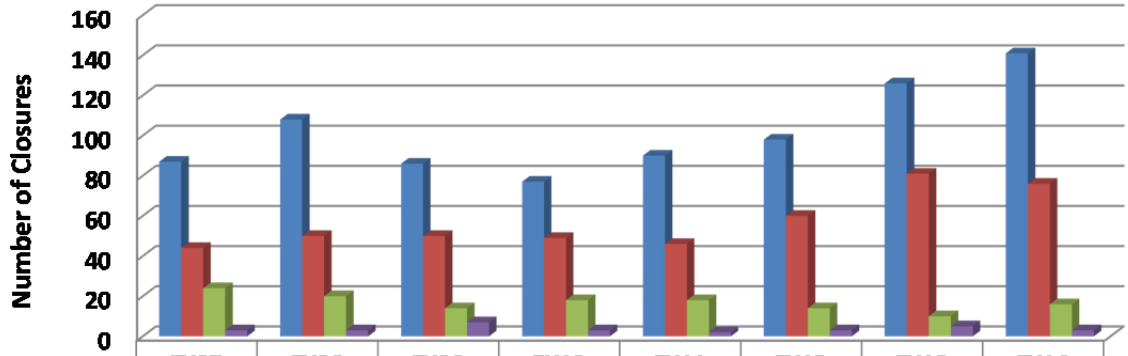
Northwest Kansas



	FY07	FY08	FY09	FY10	FY11	FY12	FY13	FY14
Successful	69.4%	70.6%	67.0%	72.5%	70.2%	70.3%	66.7%	60.6%
Total Revocation Closures	24.2%	20.2%	15.2%	16.5%	24.1%	23.4%	22.6%	23.0%
Unsuccessful	4.8%	8.4%	16.1%	9.2%	3.5%	5.1%	10.1%	13.3%
Other (Death/Not Sent. to CC)	1.6%	0.8%	1.8%	1.8%	2.1%	1.3%	0.6%	3.0%

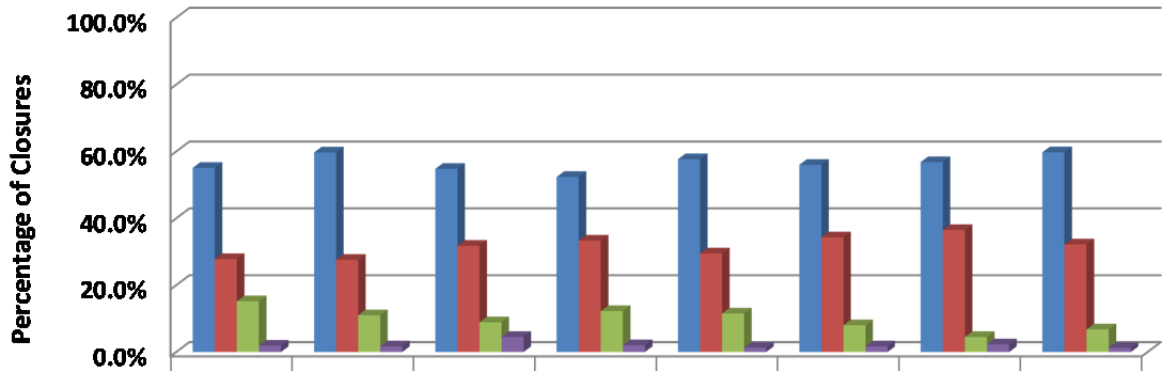
Reno

FY07 (N=158)
 FY08 (N=181)
 FY09 (N=157)
 FY10 (N=147)
 FY11 (N=156)
 FY12 (N=175)
 FY13 (N=222)
 FY14 (N=236)



	FY07	FY08	FY09	FY10	FY11	FY12	FY13	FY14
Successful	87	108	86	77	90	98	126	141
Total Revocation Closures	44	50	50	49	46	60	81	76
Unsuccessful	24	20	14	18	18	14	10	16
Other (Death/Not Sent. to CC)	3	3	7	3	2	3	5	3

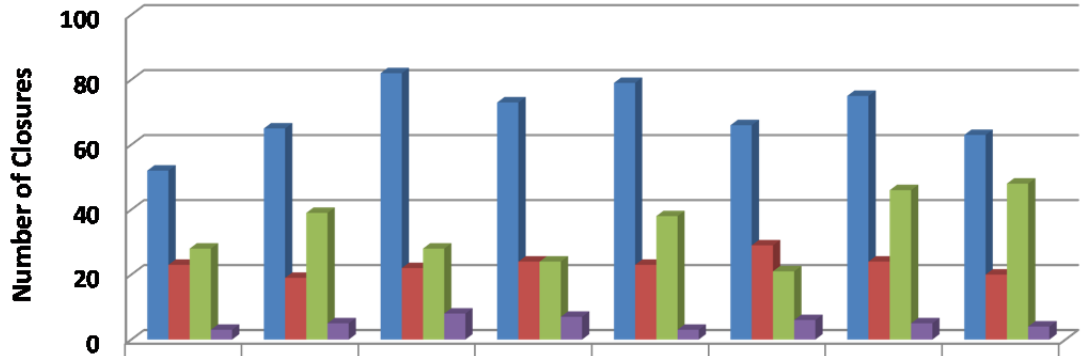
Reno



	FY07	FY08	FY09	FY10	FY11	FY12	FY13	FY14
Successful	55.1%	59.7%	54.8%	52.4%	57.7%	56.0%	56.8%	59.7%
Total Revocation Closures	27.8%	27.6%	31.8%	33.3%	29.5%	34.3%	36.5%	32.2%
Unsuccessful	15.2%	11.0%	8.9%	12.2%	11.5%	8.0%	4.5%	6.8%
Other (Death/Not Sent. to CC)	1.9%	1.7%	4.5%	2.0%	1.3%	1.7%	2.3%	1.3%

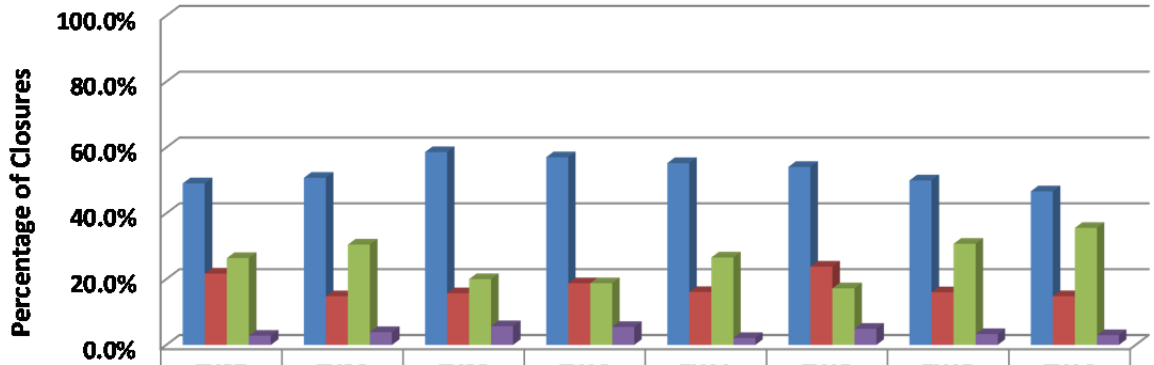
Riley

FY07 (N=106)
 FY08 (N=128)
 FY09 (N=140)
 FY10 (N=128)
 FY11 (N=143)
 FY12 (N=122)
 FY13 (N=150)
 FY14 (N=135)



	FY07	FY08	FY09	FY10	FY11	FY12	FY13	FY14
Successful	52	65	82	73	79	66	75	63
Total Revocation Closures	23	19	22	24	23	29	24	20
Unsuccessful	28	39	28	24	38	21	46	48
Other (Death/Not Sent. to CC)	3	5	8	7	3	6	5	4

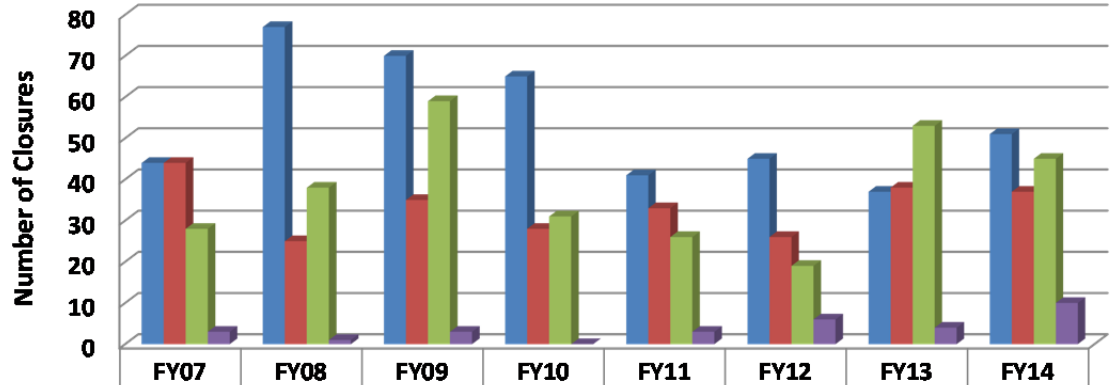
Riley



	FY07	FY08	FY09	FY10	FY11	FY12	FY13	FY14
Successful	49.1%	50.8%	58.6%	57.0%	55.2%	54.1%	50.0%	46.7%
Total Revocation Closures	21.7%	14.8%	15.7%	18.8%	16.1%	23.8%	16.0%	14.8%
Unsuccessful	26.4%	30.5%	20.0%	18.8%	26.6%	17.2%	30.7%	35.6%
Other (Death/Not Sent. to CC)	2.8%	3.9%	5.7%	5.5%	2.1%	4.9%	3.3%	3.0%

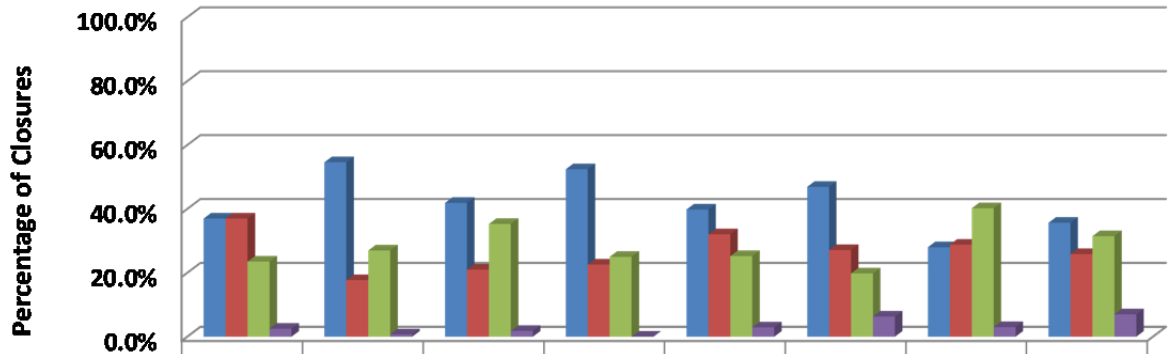
Santa Fe Trail

FY07 (N=119)
 FY08 (N=141)
 FY09 (N=167)
 FY10 (N=167)
 FY11 (N=124)
 FY12 (N=96)
 FY13 (N=132)
 FY14 (N=143)



	FY07	FY08	FY09	FY10	FY11	FY12	FY13	FY14
Successful	44	77	70	65	41	45	37	51
Total Revocation Closures	44	25	35	28	33	26	38	37
Unsuccessful	28	38	59	31	26	19	53	45
Other (Death/Not Sent. to CC)	3	1	3	0	3	6	4	10

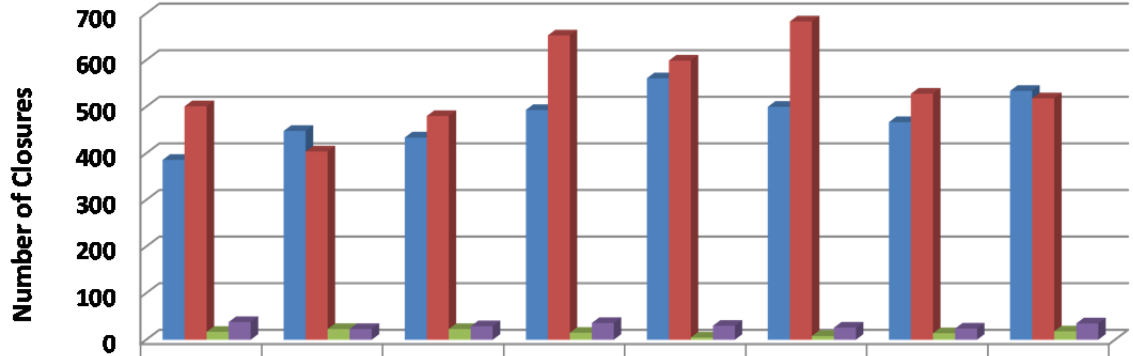
Santa Fe Trail



	FY07	FY08	FY09	FY10	FY11	FY12	FY13	FY14
Successful	37.0%	54.6%	41.9%	52.4%	39.8%	46.9%	28.0%	35.7%
Total Revocation Closures	37.0%	17.7%	21.0%	22.6%	32.0%	27.1%	28.8%	25.9%
Unsuccessful	23.5%	27.0%	35.3%	25.0%	25.2%	19.8%	40.2%	31.5%
Other (Death/Not Sent. to CC)	2.5%	0.7%	1.8%	0.0%	2.9%	6.3%	3.0%	7.0%

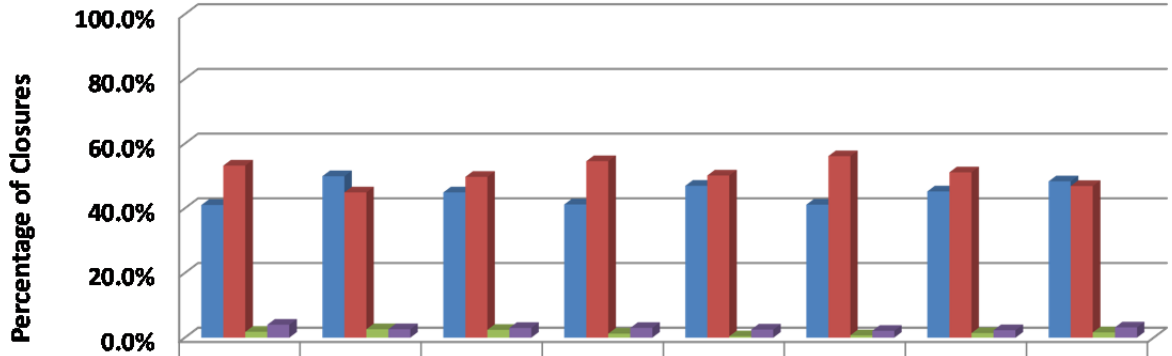
Sedgwick

FY07 (N=942)
 FY08 (N=898)
 FY09 (N=966)
 FY10 (N=1197)
 FY11 (N=1195)
 FY12 (N=1217)
 FY13 (N=1033)
 FY14 (N=1105)



	FY07	FY08	FY09	FY10	FY11	FY12	FY13	FY14
Successful	386	448	434	493	561	500	467	534
Total Revocation Closures	501	404	480	653	599	683	528	518
Unsuccessful	17	23	23	15	5	8	14	18
Other (Death/Not Sent. to CC)	38	23	29	36	30	26	24	35

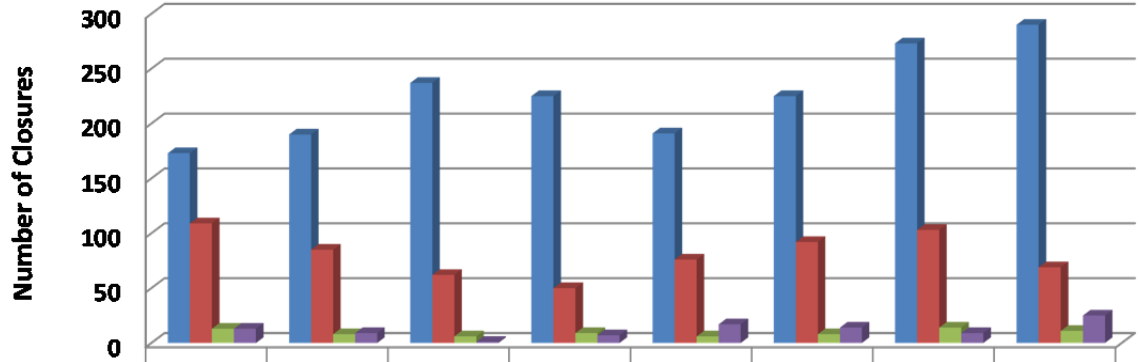
Sedgwick



	FY07	FY08	FY09	FY10	FY11	FY12	FY13	FY14
Successful	41.0%	49.9%	44.9%	41.2%	46.9%	41.1%	45.2%	48.3%
Total Revocation Closures	53.2%	44.9%	49.7%	54.6%	50.1%	56.1%	51.1%	46.9%
Unsuccessful	1.8%	2.6%	2.4%	1.3%	0.4%	0.7%	1.4%	1.6%
Other (Death/Not Sent. to CC)	4.0%	2.6%	3.0%	3.0%	2.5%	2.1%	2.3%	3.2%

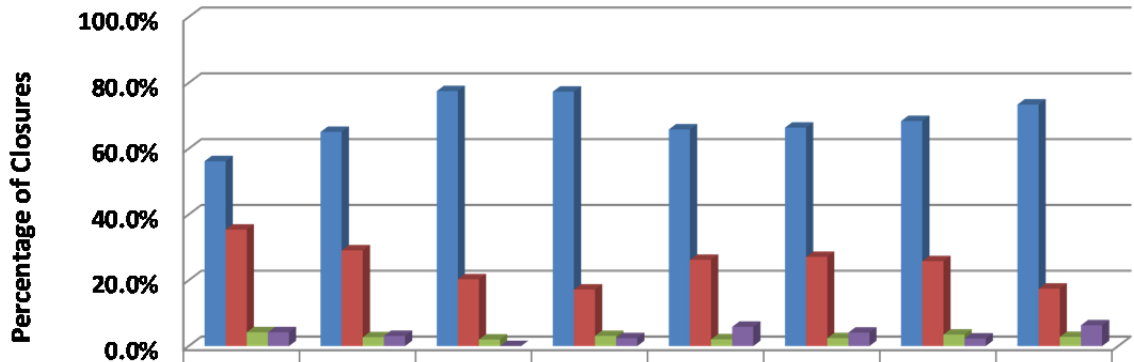
Shawnee

FY07 (N=308)
 FY08 (N=292)
 FY09 (N=306)
 FY10 (N=291)
 FY11 (N=290)
 FY12 (N=339)
 FY13 (N=399)
 FY14 (N=395)



	FY07	FY08	FY09	FY10	FY11	FY12	FY13	FY14
Successful	173	190	237	225	191	225	273	290
Total Revocation Closures	109	85	62	50	76	92	103	69
Unsuccessful	13	8	6	9	6	8	14	11
Other (Death/Not Sent. to CC)	13	9	1	7	17	14	9	25

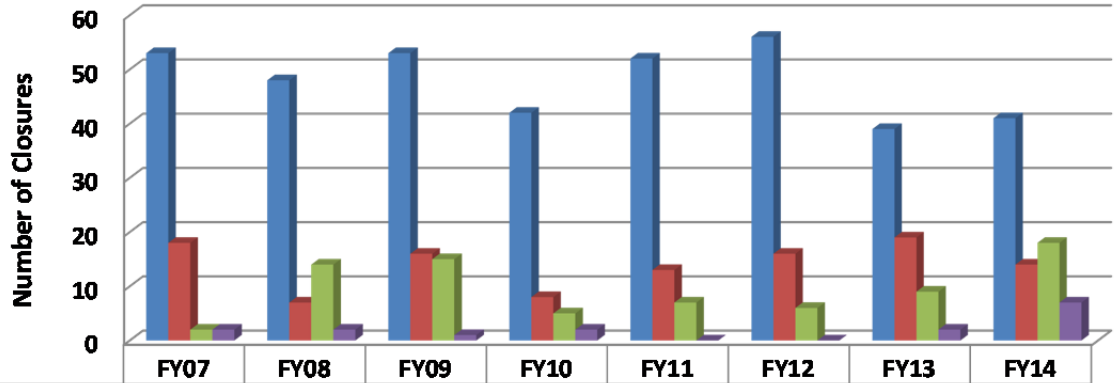
Shawnee



	FY07	FY08	FY09	FY10	FY11	FY12	FY13	FY14
Successful	56.2%	65.1%	77.5%	77.3%	65.9%	66.4%	68.4%	73.4%
Total Revocation Closures	35.4%	29.1%	20.3%	17.2%	26.2%	27.1%	25.8%	17.5%
Unsuccessful	4.2%	2.7%	2.0%	3.1%	2.1%	2.4%	3.5%	2.8%
Other (Death/Not Sent. to CC)	4.2%	3.1%	0.0%	2.4%	5.9%	4.1%	2.3%	6.3%

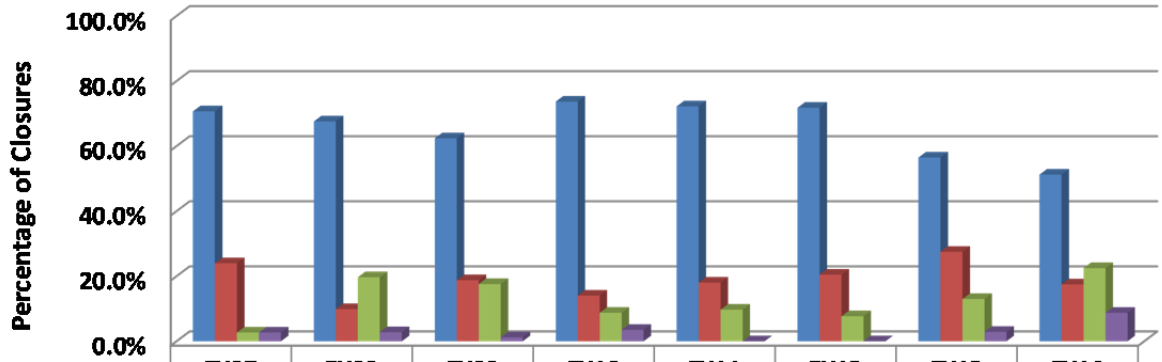
South Central Kansas

FY07 (N=75)
 FY08 (N=71)
 FY09 (N=85)
 FY10 (N=57)
 FY11 (N=72)
 FY12 (N=78)
 FY13 (N=69)
 FY14 (N=80)



	FY07	FY08	FY09	FY10	FY11	FY12	FY13	FY14
Successful	53	48	53	42	52	56	39	41
Total Revocation Closures	18	7	16	8	13	16	19	14
Unsuccessful	2	14	15	5	7	6	9	18
Other (Death/Not Sent. to CC)	2	2	1	2	0	0	2	7

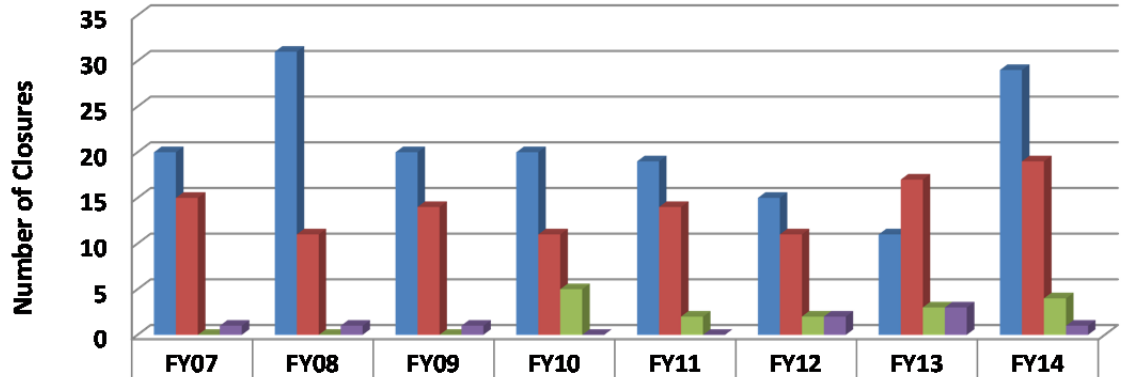
South Central Kansas



	FY07	FY08	FY09	FY10	FY11	FY12	FY13	FY14
Successful	70.7%	67.6%	62.4%	73.7%	72.2%	71.8%	56.5%	51.3%
Total Revocation Closures	24.0%	9.9%	18.8%	14.0%	18.1%	20.5%	27.5%	17.5%
Unsuccessful	2.7%	19.7%	17.6%	8.8%	9.7%	7.7%	13.0%	22.5%
Other (Death/Not Sent. to CC)	2.7%	2.8%	1.2%	3.5%	0.0%	0.0%	2.9%	8.8%

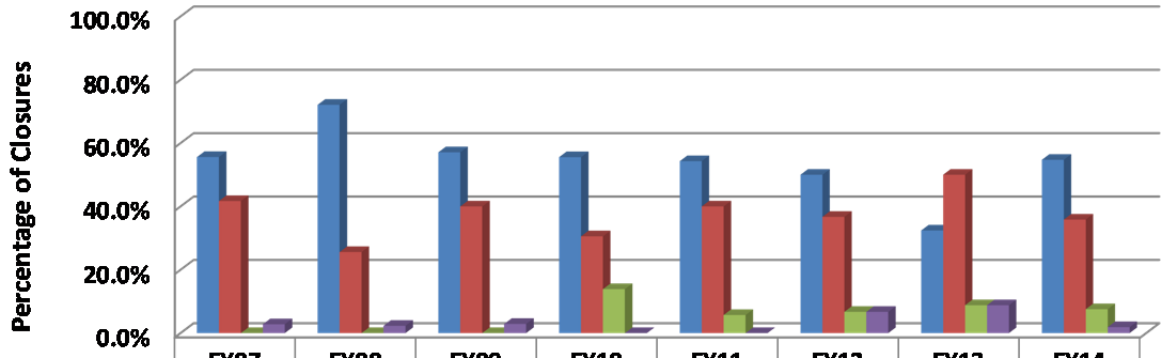
Sumner

FY07 (N=36)
 FY08 (N=43)
 FY09 (N=35)
 FY10 (N=36)
 FY11 (N=35)
 FY12 (N=30)
 FY13 (N=34)
 FY14 (N=53)



	FY07	FY08	FY09	FY10	FY11	FY12	FY13	FY14
Successful	20	31	20	20	19	15	11	29
Total Revocation Closures	15	11	14	11	14	11	17	19
Unsuccessful	0	0	0	5	2	2	3	4
Other (Death/Not Sent. to CC)	1	1	1	0	0	2	3	1

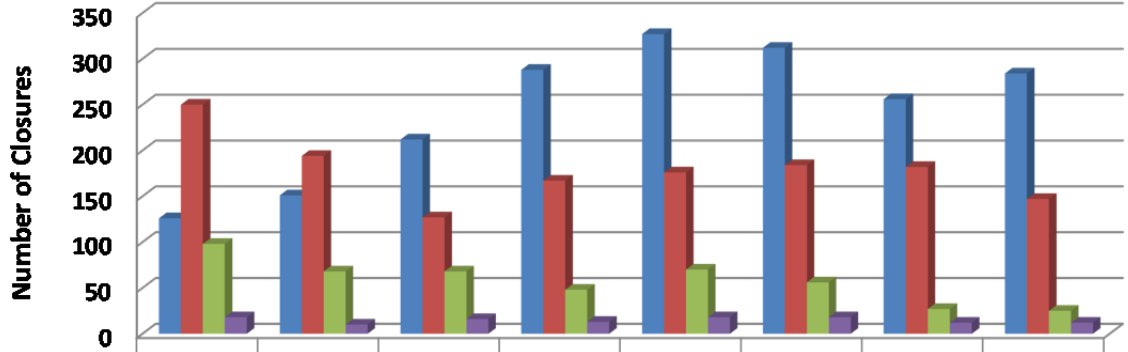
Sumner



	FY07	FY08	FY09	FY10	FY11	FY12	FY13	FY14
Successful	55.6%	72.1%	57.1%	55.6%	54.3%	50.0%	32.4%	54.7%
Total Revocation Closures	41.7%	25.6%	40.0%	30.6%	40.0%	36.7%	50.0%	35.8%
Unsuccessful	0.0%	0.0%	0.0%	13.9%	5.7%	6.7%	8.8%	7.5%
Other (Death/Not Sent. to CC)	2.8%	2.3%	2.9%	0.0%	0.0%	6.7%	8.8%	1.9%

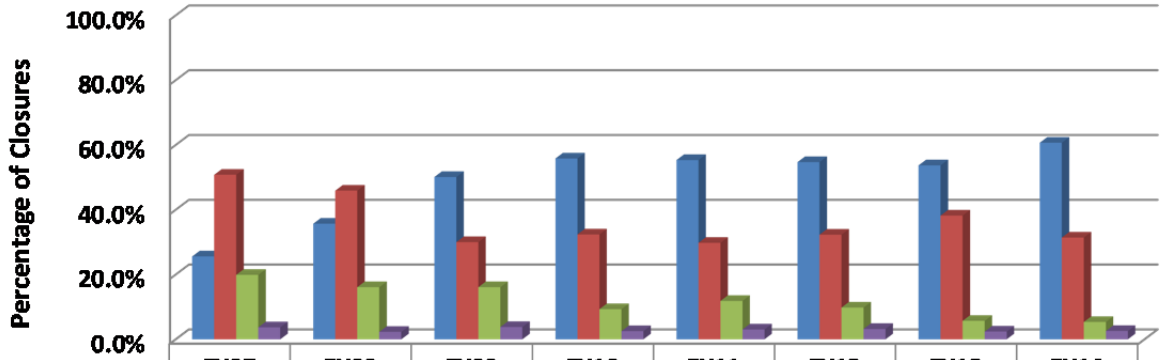
Unified Government

FY07 (N=492)
 FY08 (N=423)
 FY09 (N=423)
 FY10 (N=516)
 FY11 (N=591)
 FY12 (N=570)
 FY13 (N=477)
 FY14 (N=468)



	FY07	FY08	FY09	FY10	FY11	FY12	FY13	FY14
Successful	126	151	212	288	327	312	256	284
Total Revocation Closures	250	194	127	167	176	184	182	147
Unsuccessful	98	68	68	48	70	56	27	25
Other (Death/Not Sent. to CC)	18	10	16	13	18	18	12	12

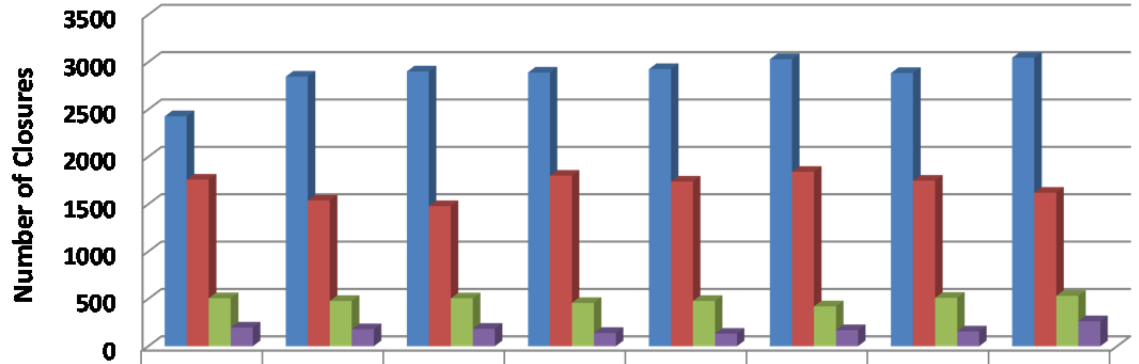
Unified Government



	FY07	FY08	FY09	FY10	FY11	FY12	FY13	FY14
Successful	25.6%	35.7%	50.1%	55.8%	55.3%	54.7%	53.7%	60.7%
Total Revocation Closures	50.8%	45.9%	30.0%	32.4%	29.8%	32.3%	38.2%	31.4%
Unsuccessful	19.9%	16.1%	16.1%	9.3%	11.8%	9.8%	5.7%	5.3%
Other (Death/Not Sent. to CC)	3.7%	2.3%	3.8%	2.5%	3.0%	3.2%	2.4%	2.6%

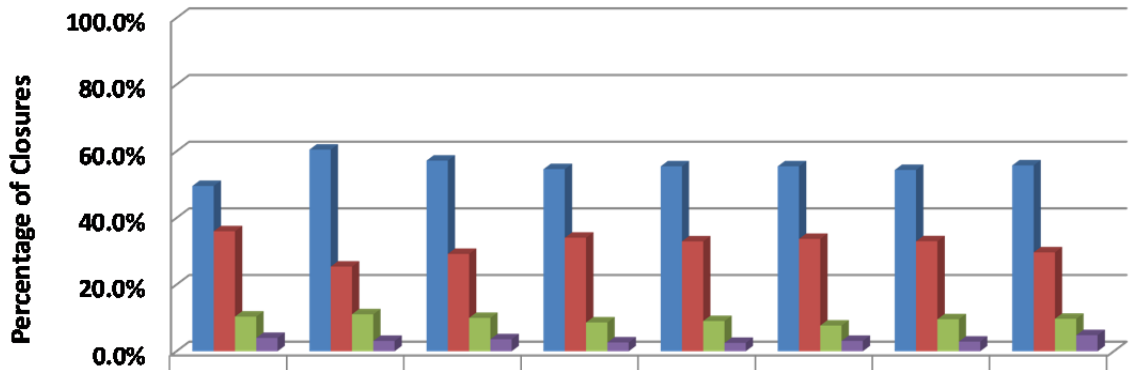
Statewide

FY07 (N=4891)
 FY08 (N=5044)
 FY09 (N=5070)
 FY10 (N=5287)
 FY11 (N=5274)
 FY12 (N=5463)
 FY13 (N=5300)
 FY14 (N=5463)



	FY07	FY08	FY09	FY10	FY11	FY12	FY13	FY14
Successful	2428	2847	2901	2889	2926	3031	2885	3046
Total Revocation Closures	1759	1539	1479	1801	1738	1841	1748	1621
Unsuccessful	507	478	506	457	478	421	511	532
Other (Death/Not Sent. to CC)	197	180	184	140	132	170	156	264

Statewide



	FY07	FY08	FY09	FY10	FY11	FY12	FY13	FY14
Successful	49.6%	60.5%	57.2%	54.6%	55.5%	55.5%	54.4%	55.8%
Total Revocation Closures	36.0%	25.4%	29.2%	34.1%	33.0%	33.7%	33.0%	29.7%
Unsuccessful	10.4%	11.1%	10.0%	8.6%	9.1%	7.7%	9.6%	9.7%
Other (Death/Not Sent. to CC)	4.0%	3.1%	3.6%	2.6%	2.5%	3.1%	2.9%	4.8%

SECTION IV: Number and Percentage of Departures by Agency and Statewide for FY14

Data was pulled from the Court Case Departures Report (export to Excel) within TOADS for FY14 only. Please note that a departure may be counted more than once due to multiple departure types. There are several departure types but only the four most utilized departure types are included (as the report does not make a distinction between a Double Downward; Double Upward; or Up & Down departure).

The sentencing court may depart upward to increase the length of a sentence up to double the duration (**Upward Durational Departure**) within the sentencing grid block.

The court may also depart downward to lower the duration of a presumptive sentence (**Downward Durational**).

The sentencing court may depart upward to increase the type of supervision from probation to prison (**Upward Dispositional**)

The sentencing court may also depart downward to decrease the type of supervision from prison to probation (**Downward Dispositional**).

*A more in-depth explanation of departure types is available by request if needed.

FY2014 Departure Types by Agency

	Downward Durational	Downward Dispositional	Upward Durational	Upward Dispositional	Total Departures (includes cases with 1+ departure types)	Downward Durational	Downward Dispositional	Upward Durational	Upward Dispositional
2nd	0	14	0	0	14	0.0%	100.0%	0.0%	0.0%
4th	1	18	0	0	19	5.3%	94.7%	0.0%	0.0%
5th	0	12	0	0	12	0.0%	100.0%	0.0%	0.0%
6th	1	22	0	0	23	4.3%	95.7%	0.0%	0.0%
8th	1	32	0	0	33	3.0%	97.0%	0.0%	0.0%
11th	0	37	0	0	37	0.0%	100.0%	0.0%	0.0%
12th	0	13	0	1	14	0.0%	92.9%	0.0%	7.1%
13th	0	21	0	0	21	0.0%	100.0%	0.0%	0.0%
22nd	5	13	0	0	14	35.7%	92.9%	0.0%	0.0%
24th	0	17	0	0	17	0.0%	100.0%	0.0%	0.0%
25th	4	23	0	0	27	14.8%	85.2%	0.0%	0.0%
28th	0	56	0	0	56	0.0%	100.0%	0.0%	0.0%
31st	1	6	0	0	7	14.3%	85.7%	0.0%	0.0%
AT	0	0	0	0	0	0.0%	0.0%	0.0%	0.0%
CEK	0	37	0	0	37	0.0%	100.0%	0.0%	0.0%
CB	4	16	0	0	20	20.0%	80.0%	0.0%	0.0%
CL	0	13	0	0	13	0.0%	100.0%	0.0%	0.0%
DG	0	21	0	0	21	0.0%	100.0%	0.0%	0.0%
HVMP	0	51	0	1	52	0.0%	98.1%	0.0%	1.9%
JO	13	33	0	0	46	28.3%	71.7%	0.0%	0.0%
LV	3	3	0	0	6	50.0%	50.0%	0.0%	0.0%
MG	2	14	1	0	17	11.8%	82.4%	5.9%	0.0%
NWK	3	33	0	0	36	8.3%	91.7%	0.0%	0.0%
RN	0	64	0	0	64	0.0%	100.0%	0.0%	0.0%
RL	0	20	0	0	20	0.0%	100.0%	0.0%	0.0%
SFT	2	23	0	0	25	8.0%	92.0%	0.0%	0.0%
SG	1	347	0	1	349	0.3%	99.4%	0.0%	0.3%
SN	1	171	3	0	175	0.6%	97.7%	1.7%	0.0%
SCK	1	11	1	0	13	7.7%	84.6%	7.7%	0.0%
SU	0	3	0	0	3	0.0%	100.0%	0.0%	0.0%
UG	32	115	0	0	147	21.8%	78.2%	0.0%	0.0%
STATE	75	1259	5	3	1338	5.6%	94.1%	0.4%	0.2%

SECTION V: Number of Community Corrections Offenders with an LSI-R Score: Termination Reason by Risk Level

This is a quick snapshot of the number of offenders LSI-R risk level by termination reason for all agencies and statewide during fiscal year 2014. The second page is the percentage of offenders LSI-R risk level by termination reason. Numbers were pulled from the Court Case Sentencing Activity Summary report (run on 7/11/14 at 7:08:09 am) and matched with numbers from the TOADS-Assessment file (assessment conducted closest to discharge). There will be several offenders who did not have an LSI-R supervision level. Also, offenders who were Not Sentenced to Community Corrections or who Died were not included in the LSI-R risk level data.

As stated for Section II, you may notice that if you sum up all the agencies they will not equal the statewide total. This is because looking at the data from the agency perspective, offender files have the possibility of having more than one file during that particular time frame (meaning offender could be on supervision, completed, then back on within the same year) – in data terms, the offender can be duplicated (also found in Section II). But when it looks at the statewide summary it's just looking at the actual offender (even though it says offender files) – in data terms – unduplicated.

**Number of Community Corrections Offenders
Termination Reason by Supervision Level
FY 2014**

CC Agency	ISL I					ISL II					ISL III					ISL IV					TOTAL
	Successful	Unsuccessful	Revoked-Condition	Revoked-New Felony	Revoked-New Misdemeanor	Successful	Unsuccessful	Revoked-Condition	Revoked-New Felony	Revoked-New Misdemeanor	Successful	Unsuccessful	Revoked-Condition	Revoked-New Felony	Revoked-New Misdemeanor	Successful	Unsuccessful	Revoked-Condition	Revoked-New Felony	Revoked-New Misdemeanor	
2nd	11	0	3	2	0	17	1	5	0	0	23	0	3	1	0	36	0	0	1	0	103
4th	1	6	14	6	0	17	11	8	2	1	22	7	0	1	0	20	1	0	0	0	117
5th	1	10	7	9	0	6	6	2	2	0	16	3	0	0	0	27	0	0	0	0	89
6th	1	4	4	2	1	4	6	9	3	1	8	2	6	1	0	24	3	0	0	1	80
8th	0	4	14	5	2	6	9	13	5	0	28	11	5	1	1	39	3	2	0	0	148
11th	8	1	17	6	1	9	3	9	5	0	36	0	0	0	1	26	0	0	0	0	122
12th	0	1	3	0	0	3	5	6	1	0	6	3	1	0	0	14	0	1	0	0	44
13th	3	1	1	0	0	4	0	1	2	0	15	2	0	1	0	14	1	0	1	0	46
22nd	3	0	2	1	0	7	2	5	0	0	19	0	1	1	0	20	0	0	0	0	61
24th	0	1	4	6	1	3	1	1	0	0	6	1	0	1	0	7	0	0	0	0	32
25th	1	1	5	2	1	3	0	3	1	0	14	1	2	0	0	46	1	1	0	0	82
28th	12	4	24	19	3	24	0	12	7	0	55	1	3	5	1	51	0	0	1	0	222
31st	3	1	8	4	1	3	2	1	2	0	8	1	0	1	0	12	0	0	0	0	47
AT	2	1	1	1	0	1	1	2	2	0	4	1	2	0	1	5	1	0	0	0	25
CEK	5	8	11	2	0	7	8	4	2	0	16	6	2	1	0	20	4	1	0	0	97
CB	0	4	4	1	1	3	8	7	2	0	6	5	3	1	0	43	5	1	0	0	94
CL	0	7	7	0	1	5	8	4	1	1	9	5	2	1	0	27	5	0	0	0	83
DG	4	2	7	4	0	7	2	8	0	0	23	2	2	1	0	41	2	1	0	0	106
HVMP	3	5	9	1	1	10	11	8	2	0	27	7	1	0	0	38	2	0	0	0	125
JO	18	9	34	22	9	47	11	22	22	11	91	8	5	8	2	135	1	1	0	0	456
LV	1	4	3	2	0	1	3	4	2	0	10	5	1	2	0	12	0	1	0	0	51
MG	3	1	13	7	4	9	2	3	1	0	19	3	0	2	0	17	0	0	0	0	84
NWK	3	4	11	3	1	9	5	10	4	1	19	1	0	1	1	59	3	0	0	0	135
RN	2	4	25	11	0	22	5	21	6	3	57	5	3	2	1	53	2	0	0	0	222
RL	4	11	9	2	1	14	14	4	0	1	18	16	1	0	0	26	3	1	0	0	125
SFT	0	12	13	1	0	4	7	3	2	1	14	9	7	1	1	33	9	2	1	1	121
SG	19	5	109	63	27	58	5	105	41	26	180	5	36	20	11	260	1	3	4	3	981
SN	47	4	17	2	1	70	4	18	9	0	95	1	2	2	0	67	0	1	3	0	343
SCK	0	1	2	1	1	4	2	7	1	1	9	5	0	0	0	26	5	0	0	0	65
SU	0	0	1	2	0	1	2	5	2	0	12	1	1	2	1	14	0	0	1	0	45
UG	6	3	17	11	0	45	9	37	15	2	88	6	23	11	1	114	3	8	1	0	400
STATE	161	119	399	198	57	423	153	347	144	49	953	123	112	68	22	1326	55	24	13	5	4751

*Numbers based on the most recent scored LSIR conducted to termination date

**Percentage of Community Corrections Offenders
Termination Reason by Supervision Level
FY 2014**

CC Agency	ISL I					ISL II					ISL III					ISL IV					TOTAL
	Successful	Unsuccessful	Revoked-Condition	Revoked-New Felony	Revoked-New Misdemeanor	Successful	Unsuccessful	Revoked-Condition	Revoked-New Felony	Revoked-New Misdemeanor	Successful	Unsuccessful	Revoked-Condition	Revoked-New Felony	Revoked-New Misdemeanor	Successful	Unsuccessful	Revoked-Condition	Revoked-New Felony	Revoked-New Misdemeanor	
2nd	10.7%	0.0%	2.9%	1.9%	0.0%	16.5%	1.0%	4.9%	0.0%	0.0%	22.3%	0.0%	2.9%	1.0%	0.0%	35.0%	0.0%	0.0%	1.0%	0.0%	100.0%
4th	0.9%	5.1%	12.0%	5.1%	0.0%	14.5%	9.4%	6.8%	1.7%	0.9%	18.8%	6.0%	0.0%	0.9%	0.0%	17.1%	0.9%	0.0%	0.0%	0.0%	100.0%
5th	1.1%	11.2%	7.9%	10.1%	0.0%	6.7%	6.7%	2.2%	2.2%	0.0%	18.0%	3.4%	0.0%	0.0%	0.0%	30.3%	0.0%	0.0%	0.0%	0.0%	100.0%
6th	1.3%	5.0%	5.0%	2.5%	1.3%	5.0%	7.5%	11.3%	3.8%	1.3%	10.0%	2.5%	7.5%	1.3%	0.0%	30.0%	3.8%	0.0%	0.0%	1.3%	100.0%
8th	0.0%	2.7%	9.5%	3.4%	1.4%	4.1%	6.1%	8.8%	3.4%	0.0%	18.9%	7.4%	3.4%	0.7%	0.7%	26.4%	2.0%	1.4%	0.0%	0.0%	100.0%
11th	6.6%	0.8%	13.9%	4.9%	0.8%	7.4%	2.5%	7.4%	4.1%	0.0%	29.5%	0.0%	0.0%	0.0%	0.8%	21.3%	0.0%	0.0%	0.0%	0.0%	100.0%
12th	0.0%	2.3%	6.8%	0.0%	0.0%	6.8%	11.4%	13.6%	2.3%	0.0%	13.6%	6.8%	2.3%	0.0%	0.0%	31.8%	0.0%	2.3%	0.0%	0.0%	100.0%
13th	6.5%	2.2%	2.2%	0.0%	0.0%	8.7%	0.0%	2.2%	4.3%	0.0%	32.6%	4.3%	0.0%	2.2%	0.0%	30.4%	2.2%	0.0%	2.2%	0.0%	100.0%
22nd	4.9%	0.0%	3.3%	1.6%	0.0%	11.5%	3.3%	8.2%	0.0%	0.0%	31.1%	0.0%	1.6%	1.6%	0.0%	32.8%	0.0%	0.0%	0.0%	0.0%	100.0%
24th	0.0%	3.1%	12.5%	18.8%	3.1%	9.4%	3.1%	3.1%	0.0%	0.0%	18.8%	3.1%	0.0%	3.1%	0.0%	21.9%	0.0%	0.0%	0.0%	0.0%	100.0%
25th	1.2%	1.2%	6.1%	2.4%	1.2%	3.7%	0.0%	3.7%	1.2%	0.0%	17.1%	1.2%	2.4%	0.0%	0.0%	56.1%	1.2%	1.2%	0.0%	0.0%	100.0%
28th	5.4%	1.8%	10.8%	8.6%	1.4%	10.8%	0.0%	5.4%	3.2%	0.0%	24.8%	0.5%	1.4%	2.3%	0.5%	23.0%	0.0%	0.0%	0.5%	0.0%	100.0%
31st	6.4%	2.1%	17.0%	8.5%	2.1%	6.4%	4.3%	2.1%	4.3%	0.0%	17.0%	2.1%	0.0%	2.1%	0.0%	25.5%	0.0%	0.0%	0.0%	0.0%	100.0%
AT	8.0%	4.0%	4.0%	4.0%	0.0%	4.0%	4.0%	8.0%	8.0%	0.0%	16.0%	4.0%	8.0%	0.0%	4.0%	20.0%	4.0%	0.0%	0.0%	0.0%	100.0%
CEK	5.2%	8.2%	11.3%	2.1%	0.0%	7.2%	8.2%	4.1%	2.1%	0.0%	16.5%	6.2%	2.1%	1.0%	0.0%	20.6%	4.1%	1.0%	0.0%	0.0%	100.0%
CB	0.0%	4.3%	4.3%	1.1%	1.1%	3.2%	8.5%	7.4%	2.1%	0.0%	6.4%	5.3%	3.2%	1.1%	0.0%	45.7%	5.3%	1.1%	0.0%	0.0%	100.0%
CL	0.0%	8.4%	8.4%	0.0%	1.2%	6.0%	9.6%	4.8%	1.2%	1.2%	10.8%	6.0%	2.4%	1.2%	0.0%	32.5%	6.0%	0.0%	0.0%	0.0%	100.0%
DG	3.8%	1.9%	6.6%	3.8%	0.0%	6.6%	1.9%	7.5%	0.0%	0.0%	21.7%	1.9%	1.9%	0.9%	0.0%	38.7%	1.9%	0.9%	0.0%	0.0%	100.0%
HVMP	2.4%	4.0%	7.2%	0.8%	0.8%	8.0%	8.8%	6.4%	1.6%	0.0%	21.6%	5.6%	0.8%	0.0%	0.0%	30.4%	1.6%	0.0%	0.0%	0.0%	100.0%
JO	3.9%	2.0%	7.5%	4.8%	2.0%	10.3%	2.4%	4.8%	4.8%	2.4%	20.0%	1.8%	1.1%	1.8%	0.4%	29.6%	0.2%	0.2%	0.0%	0.0%	100.0%
LV	2.0%	7.8%	5.9%	3.9%	0.0%	2.0%	5.9%	7.8%	3.9%	0.0%	19.6%	9.8%	2.0%	3.9%	0.0%	23.5%	0.0%	2.0%	0.0%	0.0%	100.0%
MG	3.6%	1.2%	15.5%	8.3%	4.8%	10.7%	2.4%	3.6%	1.2%	0.0%	22.6%	3.6%	0.0%	2.4%	0.0%	20.2%	0.0%	0.0%	0.0%	0.0%	100.0%
NWK	2.2%	3.0%	8.1%	2.2%	0.7%	6.7%	3.7%	7.4%	3.0%	0.7%	14.1%	0.7%	0.0%	0.7%	0.7%	43.7%	2.2%	0.0%	0.0%	0.0%	100.0%
RN	0.9%	1.8%	11.3%	5.0%	0.0%	9.9%	2.3%	9.5%	2.7%	1.4%	25.7%	2.3%	1.4%	0.9%	0.5%	23.9%	0.9%	0.0%	0.0%	0.0%	100.0%
RL	3.2%	8.8%	7.2%	1.6%	0.8%	11.2%	11.2%	3.2%	0.0%	0.8%	14.4%	12.8%	0.8%	0.0%	0.0%	20.8%	2.4%	0.8%	0.0%	0.0%	100.0%
SFT	0.0%	9.9%	10.7%	0.8%	0.0%	3.3%	5.8%	2.5%	1.7%	0.8%	11.6%	7.4%	5.8%	0.8%	0.8%	27.3%	7.4%	1.7%	0.8%	0.8%	100.0%
SG	1.9%	0.5%	11.1%	6.4%	2.8%	5.9%	0.5%	10.7%	4.2%	2.7%	18.3%	0.5%	3.7%	2.0%	1.1%	26.5%	0.1%	0.3%	0.4%	0.3%	100.0%
SN	13.7%	1.2%	5.0%	0.6%	0.3%	20.4%	1.2%	5.2%	2.6%	0.0%	27.7%	0.3%	0.6%	0.6%	0.0%	19.5%	0.0%	0.3%	0.9%	0.0%	100.0%
SCK	0.0%	1.5%	3.1%	1.5%	1.5%	6.2%	3.1%	10.8%	1.5%	1.5%	13.8%	7.7%	0.0%	0.0%	0.0%	40.0%	7.7%	0.0%	0.0%	0.0%	100.0%
SU	0.0%	0.0%	2.2%	4.4%	0.0%	2.2%	4.4%	11.1%	4.4%	0.0%	26.7%	2.2%	2.2%	4.4%	2.2%	31.1%	0.0%	0.0%	2.2%	0.0%	100.0%
UG	1.5%	0.8%	4.3%	2.8%	0.0%	11.3%	2.3%	9.3%	3.8%	0.5%	22.0%	1.5%	5.8%	2.8%	0.3%	28.5%	0.8%	2.0%	0.3%	0.0%	100.0%
STATE	3.4%	2.5%	8.4%	4.2%	1.2%	8.9%	3.2%	7.3%	3.0%	1.0%	20.1%	2.6%	2.4%	1.4%	0.5%	27.9%	1.2%	0.5%	0.3%	0.1%	100.0%

*Numbers based on the most recent scored LSIR conducted to termination date

**Section VI: LSI-R Conducted Closest to End of CY2013 and End of FY2014
by Risk Level for each Administrative Unit**

The data consists of the number and percentage of active offenders by the risk level assigned to the assessment conducted closest (on or before) to 12/31/13 and to 6/30/14. The data is listed for each agency and statewide. This information was pulled from the TOADS Current Status flat file and matched with the LSIR flat file.

ACTIVE CC OFFENDER by ADMIN UNIT by RISK LEVEL (as of 12/31/13)	RiskLevel						Total
	ISL I	ISL II	ISL III	ISL IV	No LSI	Unscored	
2ND JUDICIAL DISTRICT	19	44	38	18	12	2	133
4TH JUDICIAL DISTRICT	38	49	37	27	14	0	165
5TH JUDICIAL DISTRICT	58	51	30	7	3	0	149
6TH JUDICIAL DISTRICT	22	45	42	27	15	0	151
8TH JUDICIAL DISTRICT	34	64	80	35	20	1	234
11TH JUDICIAL DISTRICT	81	88	48	27	9	4	257
12TH JUDICIAL DISTRICT	13	21	9	13	3	0	59
13TH JUDICIAL DISTRICT	17	40	64	47	30	0	198
22ND JUDICIAL DISTRICT	15	34	27	19	20	0	115
24TH JUDICIAL DISTRICT	11	11	10	4	6	0	42
25TH JUDICIAL DISTRICT	14	43	55	47	15	1	175
28TH JUDICIAL DISTRICT	136	146	94	29	27	0	432
31ST JUDICIAL DISTRICT	91	50	27	24	4	0	196
ATCHISON COUNTY	9	26	18	6	7	0	66
CENTRAL KANSAS	62	64	35	26	30	1	218
CIMARRON BASIN	11	35	44	49	23	1	163
COWLEY COUNTY	33	41	34	22	6	0	136
DOUGLAS COUNTY	23	40	62	40	17	0	182
HARVEY/MCPHERSON COUNTIES	48	57	39	22	10	1	177
JOHNSON COUNTY	58	197	240	69	60	1	625
JOHNSON COUNTY RESIDENTIAL CENTER	44	50	24	4	28	1	151
LEAVENWORTH COUNTY	24	50	34	20	11	0	139
MONTGOMERY COUNTY	36	39	24	14	15	10	138
NORTHWEST KANSAS	37	72	53	34	27	3	226
RENO COUNTY	102	95	62	36	20	2	317
RILEY COUNTY	24	42	22	15	8	0	111
SANTA FE TRAIL	34	35	42	36	14	3	164
SEDGWICK COUNTY	203	419	452	268	138	17	1497
SEDGWICK COUNTY DRUG COURT	44	32	15	5	2	0	98
SHAWNEE COUNTY	128	199	158	77	59	1	622
SOUTH CENTRAL KANSAS	3	25	42	33	8	0	111
SUMNER COUNTY	6	27	33	15	10	0	91
UNIFIED GOVERNMENT	96	199	246	131	50	0	722
TOTAL	1574	2430	2240	1246	721	49	8260

ACTIVE CC OFFENDER by ADMIN UNIT by RISK LEVEL (as of 12/31/13)	RiskLevel						Total
	ISL I	ISL II	ISL III	ISL IV	No LSI	Unscored	
2ND JUDICIAL DISTRICT	14.3%	33.1%	28.6%	13.5%	9.0%	1.5%	100.0%
4TH JUDICIAL DISTRICT	23.0%	29.7%	22.4%	16.4%	8.5%	0.0%	100.0%
5TH JUDICIAL DISTRICT	38.9%	34.2%	20.1%	4.7%	2.0%	0.0%	100.0%
6TH JUDICIAL DISTRICT	14.6%	29.8%	27.8%	17.9%	9.9%	0.0%	100.0%
8TH JUDICIAL DISTRICT	14.5%	27.4%	34.2%	15.0%	8.5%	0.4%	100.0%
11TH JUDICIAL DISTRICT	31.5%	34.2%	18.7%	10.5%	3.5%	1.6%	100.0%
12TH JUDICIAL DISTRICT	22.0%	35.6%	15.3%	22.0%	5.1%	0.0%	100.0%
13TH JUDICIAL DISTRICT	8.6%	20.2%	32.3%	23.7%	15.2%	0.0%	100.0%
22ND JUDICIAL DISTRICT	13.0%	29.6%	23.5%	16.5%	17.4%	0.0%	100.0%
24TH JUDICIAL DISTRICT	26.2%	26.2%	23.8%	9.5%	14.3%	0.0%	100.0%
25TH JUDICIAL DISTRICT	8.0%	24.6%	31.4%	26.9%	8.6%	0.6%	100.0%
28TH JUDICIAL DISTRICT	31.5%	33.8%	21.8%	6.7%	6.3%	0.0%	100.0%
31ST JUDICIAL DISTRICT	46.4%	25.5%	13.8%	12.2%	2.0%	0.0%	100.0%
ATCHISON COUNTY	13.6%	39.4%	27.3%	9.1%	10.6%	0.0%	100.0%
CENTRAL KANSAS	28.4%	29.4%	16.1%	11.9%	13.8%	0.5%	100.0%
CIMARRON BASIN	6.7%	21.5%	27.0%	30.1%	14.1%	0.6%	100.0%
COWLEY COUNTY	24.3%	30.1%	25.0%	16.2%	4.4%	0.0%	100.0%
DOUGLAS COUNTY	12.6%	22.0%	34.1%	22.0%	9.3%	0.0%	100.0%
HARVEY/MCPHERSON COUNTIES	27.1%	32.2%	22.0%	12.4%	5.6%	0.6%	100.0%
JOHNSON COUNTY	9.3%	31.5%	38.4%	11.0%	9.6%	0.2%	100.0%
JOHNSON COUNTY RESIDENTIAL CENTER	29.1%	33.1%	15.9%	2.6%	18.5%	0.7%	100.0%
LEAVENWORTH COUNTY	17.3%	36.0%	24.5%	14.4%	7.9%	0.0%	100.0%
MONTGOMERY COUNTY	26.1%	28.3%	17.4%	10.1%	10.9%	7.2%	100.0%
NORTHWEST KANSAS	16.4%	31.9%	23.5%	15.0%	11.9%	1.3%	100.0%
RENO COUNTY	32.2%	30.0%	19.6%	11.4%	6.3%	0.6%	100.0%
RILEY COUNTY	21.6%	37.8%	19.8%	13.5%	7.2%	0.0%	100.0%
SANTA FE TRAIL	20.7%	21.3%	25.6%	22.0%	8.5%	1.8%	100.0%
SEDGWICK COUNTY	13.6%	28.0%	30.2%	17.9%	9.2%	1.1%	100.0%
SEDGWICK COUNTY DRUG COURT	44.9%	32.7%	15.3%	5.1%	2.0%	0.0%	100.0%
SHAWNEE COUNTY	20.6%	32.0%	25.4%	12.4%	9.5%	0.2%	100.0%
SOUTH CENTRAL KANSAS	2.7%	22.5%	37.8%	29.7%	7.2%	0.0%	100.0%
SUMNER COUNTY	6.6%	29.7%	36.3%	16.5%	11.0%	0.0%	100.0%
UNIFIED GOVERNMENT	13.3%	27.6%	34.1%	18.1%	6.9%	0.0%	100.0%
TOTAL	19.1%	29.4%	27.1%	15.1%	8.7%	0.6%	100.0%

Active CC Offenders by Risk Level by Admin Unit (as of 6/30/14)	Risk Level						Total
	No LSIR	ISL I	ISL II	ISL III	ISL IV	Unscored	
2ND JUDICIAL DISTRICT	11	19	42	43	23	1	139
4TH JUDICIAL DISTRICT	13	30	48	42	32	1	166
5TH JUDICIAL DISTRICT	7	37	49	37	15	0	145
6TH JUDICIAL DISTRICT	11	16	23	44	35	3	132
8TH JUDICIAL DISTRICT	14	39	56	72	63	2	246
11TH JUDICIAL DISTRICT	10	53	91	59	34	1	248
12TH JUDICIAL DISTRICT	3	13	14	22	10	0	62
13TH JUDICIAL DISTRICT	32	11	42	69	54	0	208
22ND JUDICIAL DISTRICT	30	12	26	27	26	0	121
24TH JUDICIAL DISTRICT	6	13	13	11	6	0	49
25TH JUDICIAL DISTRICT	14	10	34	54	55	2	169
28TH JUDICIAL DISTRICT	20	102	131	96	32	0	381
31ST JUDICIAL DISTRICT	18	71	49	38	27	1	204
ATCHISON COUNTY	7	6	20	24	10	0	67
CENTRAL KANSAS	37	39	65	46	26	2	215
CIMARRON BASIN	26	12	21	42	43	0	144
COWLEY COUNTY	11	20	31	39	26	1	128
DOUGLAS COUNTY	19	24	42	52	52	1	190
HARVEY/MCPHERSON COUNTIES	20	52	63	41	26	2	204
JOHNSON COUNTY	63	38	149	257	91	2	600
JOHNSON COUNTY RESIDENTIAL CENTER	14	34	62	33	8	0	151
LEAVENWORTH COUNTY	30	31	41	35	29	1	167
MONTGOMERY COUNTY	14	41	39	33	20	5	152
NORTHWEST KANSAS	23	40	70	54	59	0	246
RENO COUNTY	19	94	75	72	39	1	300
RILEY COUNTY	6	22	49	31	19	0	127
SANTA FE TRAIL	17	22	38	40	45	1	163
SEDGWICK COUNTY	129	145	372	492	339	16	1493
SEDGWICK COUNTY DRUG COURT	4	37	40	14	2	1	98
SHAWNEE COUNTY	49	117	194	166	97	2	625
SOUTH CENTRAL KANSAS	4	9	24	37	33	1	108
SUMNER COUNTY	15	4	20	32	26	1	98
UNIFIED GOVERNMENT	50	71	196	285	165	0	767
TOTAL	746	1284	2229	2439	1567	48	8313

Active CC Offenders by Risk Level by Admin Unit (as of 6/30/14)	Risk Level						Total
	No LSIR	ISL I	ISL II	ISL III	ISL IV	Unscored	
2ND JUDICIAL DISTRICT	7.9%	13.7%	30.2%	30.9%	16.5%	0.7%	100.0%
4TH JUDICIAL DISTRICT	7.8%	18.1%	28.9%	25.3%	19.3%	0.6%	100.0%
5TH JUDICIAL DISTRICT	4.8%	25.5%	33.8%	25.5%	10.3%	0.0%	100.0%
6TH JUDICIAL DISTRICT	8.3%	12.1%	17.4%	33.3%	26.5%	2.3%	100.0%
8TH JUDICIAL DISTRICT	5.7%	15.9%	22.8%	29.3%	25.6%	0.8%	100.0%
11TH JUDICIAL DISTRICT	4.0%	21.4%	36.7%	23.8%	13.7%	0.4%	100.0%
12TH JUDICIAL DISTRICT	4.8%	21.0%	22.6%	35.5%	16.1%	0.0%	100.0%
13TH JUDICIAL DISTRICT	15.4%	5.3%	20.2%	33.2%	26.0%	0.0%	100.0%
22ND JUDICIAL DISTRICT	24.8%	9.9%	21.5%	22.3%	21.5%	0.0%	100.0%
24TH JUDICIAL DISTRICT	12.2%	26.5%	26.5%	22.4%	12.2%	0.0%	100.0%
25TH JUDICIAL DISTRICT	8.3%	5.9%	20.1%	32.0%	32.5%	1.2%	100.0%
28TH JUDICIAL DISTRICT	5.2%	26.8%	34.4%	25.2%	8.4%	0.0%	100.0%
31ST JUDICIAL DISTRICT	8.8%	34.8%	24.0%	18.6%	13.2%	0.5%	100.0%
ATCHISON COUNTY	10.4%	9.0%	29.9%	35.8%	14.9%	0.0%	100.0%
CENTRAL KANSAS	17.2%	18.1%	30.2%	21.4%	12.1%	0.9%	100.0%
CIMARRON BASIN	18.1%	8.3%	14.6%	29.2%	29.9%	0.0%	100.0%
COWLEY COUNTY	8.6%	15.6%	24.2%	30.5%	20.3%	0.8%	100.0%
DOUGLAS COUNTY	10.0%	12.6%	22.1%	27.4%	27.4%	0.5%	100.0%
HARVEY/MCPHERSON COUNTIES	9.8%	25.5%	30.9%	20.1%	12.7%	1.0%	100.0%
JOHNSON COUNTY	10.5%	6.3%	24.8%	42.8%	15.2%	0.3%	100.0%
JOHNSON COUNTY RESIDENTIAL CENTER	9.3%	22.5%	41.1%	21.9%	5.3%	0.0%	100.0%
LEAVENWORTH COUNTY	18.0%	18.6%	24.6%	21.0%	17.4%	0.6%	100.0%
MONTGOMERY COUNTY	9.2%	27.0%	25.7%	21.7%	13.2%	3.3%	100.0%
NORTHWEST KANSAS	9.3%	16.3%	28.5%	22.0%	24.0%	0.0%	100.0%
RENO COUNTY	6.3%	31.3%	25.0%	24.0%	13.0%	0.3%	100.0%
RILEY COUNTY	4.7%	17.3%	38.6%	24.4%	15.0%	0.0%	100.0%
SANTA FE TRAIL	10.4%	13.5%	23.3%	24.5%	27.6%	0.6%	100.0%
SEDGWICK COUNTY	8.6%	9.7%	24.9%	33.0%	22.7%	1.1%	100.0%
SEDGWICK COUNTY DRUG COURT	4.1%	37.8%	40.8%	14.3%	2.0%	1.0%	100.0%
SHAWNEE COUNTY	7.8%	18.7%	31.0%	26.6%	15.5%	0.3%	100.0%
SOUTH CENTRAL KANSAS	3.7%	8.3%	22.2%	34.3%	30.6%	0.9%	100.0%
SUMNER COUNTY	15.3%	4.1%	20.4%	32.7%	26.5%	1.0%	100.0%
UNIFIED GOVERNMENT	6.5%	9.3%	25.6%	37.2%	21.5%	0.0%	100.0%
TOTAL	9.0%	15.4%	26.8%	29.3%	18.8%	0.6%	100.0%