

Juvenile Correctional Facility Population Activity

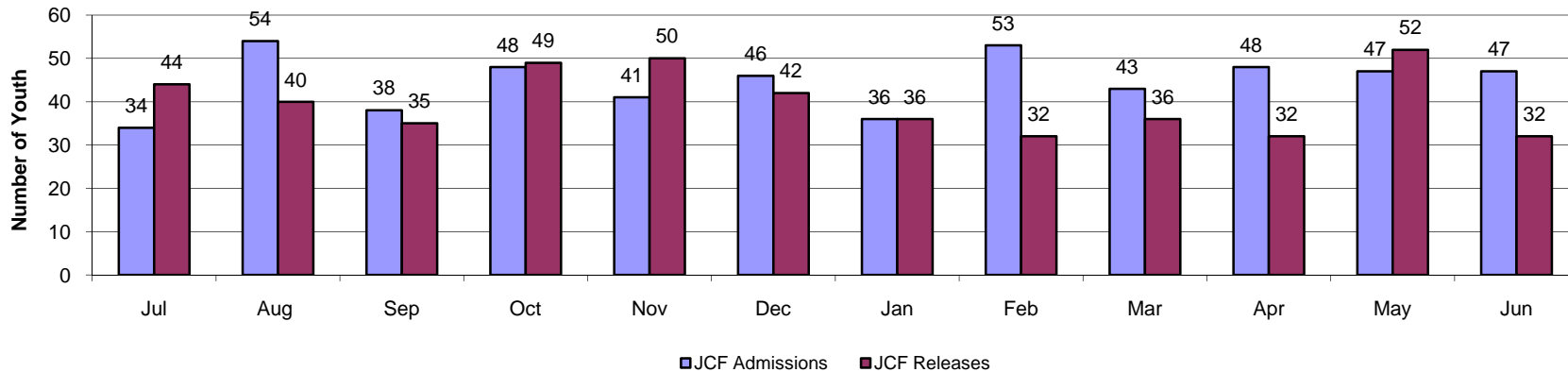
Youth in JJA custody may be placed in a setting outside their home such as relative, foster home, group home, or Juvenile Correctional Facility (JCF). Youth placed in a JCF are committed to a JCF by court order pursuant to K.S.A. 38-16,129. Information in this report includes census information on youth admitted to a JCF during FY2007.



Statewide in FY07, seven out of twelve months (58%) have seen more JCF admissions than releases. August had the greatest number of youth admissions. The statewide month end population for June 2007 (448) is 12.5% greater than the the month end population of June 2006 (392).

Statewide JCF Activity Summary	Jul	Aug	Sep	Oct	Nov	Dec	Jan	Feb	Mar	Apr	May	Jun	Total	FY07 Avg.
JCF Admissions	34	54	38	48	41	46	36	53	43	48	47	47	535	44.6
JCF Releases	44	40	35	49	50	42	36	32	36	32	52	32	480	40.0
Month End Population	387	397	400	399	390	394	394	415	422	438	433	448	N/A	409.8

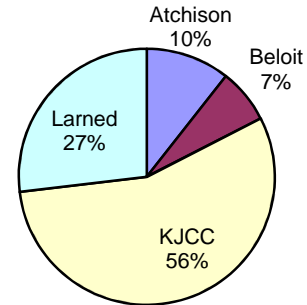
Statewide JCF Admissions and Releases FY07



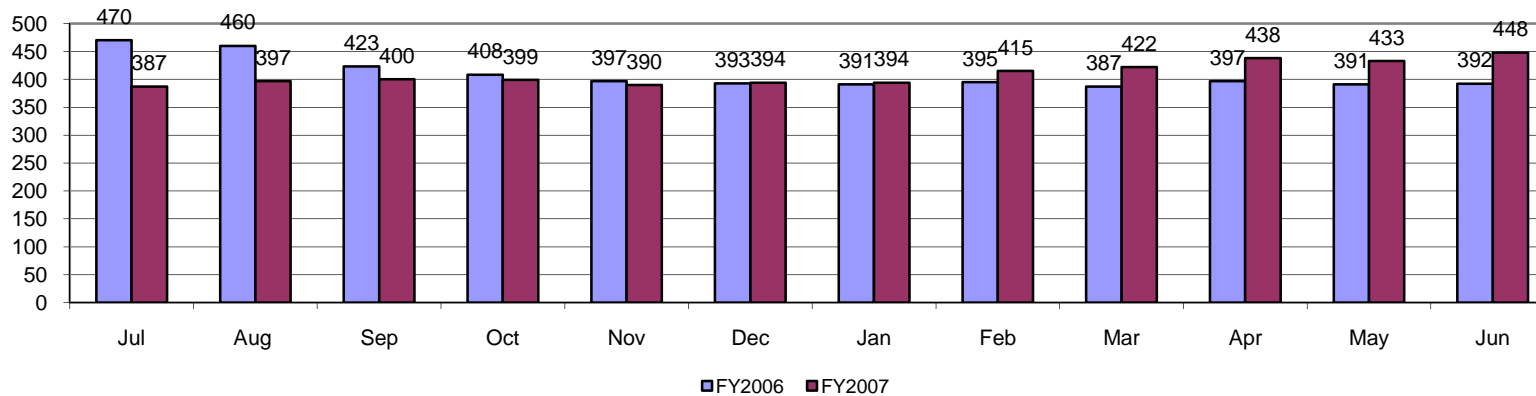
Statewide JCF Month End Population

The month end population was stable ranging from 387 to 400 in the first 7 months of FY 2007. A continual increase in the number of youth placed in JCF began in November 2006. The current JCF population (June 30, 2007) is 14.2% higher than it was at the beginning of FY07 (July 31, 2006).

Fiscal Year 2007 Average: Youth JCF Placement Distribution



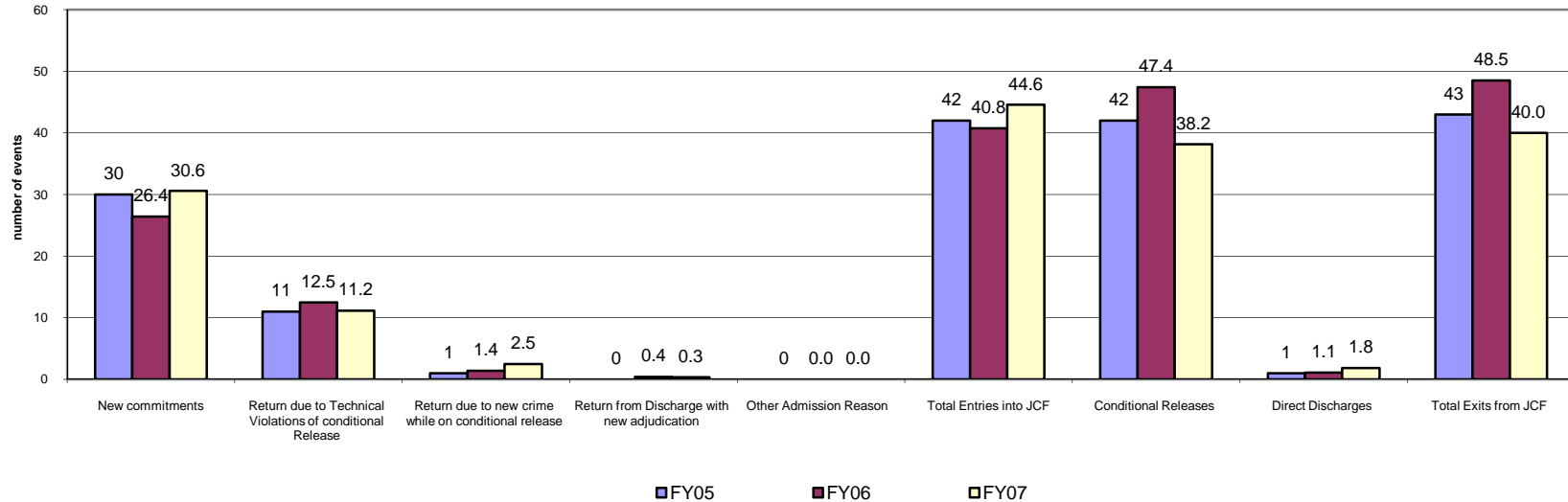
Statewide Juvenile Correctional Facility Month End Population



**Fiscal Year Flashback
Census Events: Average Monthly Frequency**

	FY05	FY06	FY07
New commitments	30	26.4	30.6
Return due to Technical Violations of conditional Release	11	12.5	11.2
Return due to new crime while on conditional release	1	1.4	2.5
Return from Discharge with new adjudication	0	0.4	0.3
Other Admission Reason	0	0.0	0.0
Total Entries into JCF	42	40.8	44.6
Conditional Releases	42	47.4	38.2
Direct Discharges	1	1.1	1.8
Total Exits from JCF	43	48.5	40.0

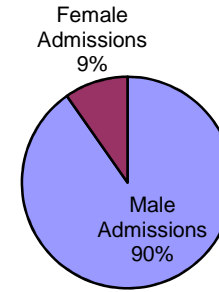
Statewide Avg. JCF Census # Events Across Years



Statewide JCF Characteristics

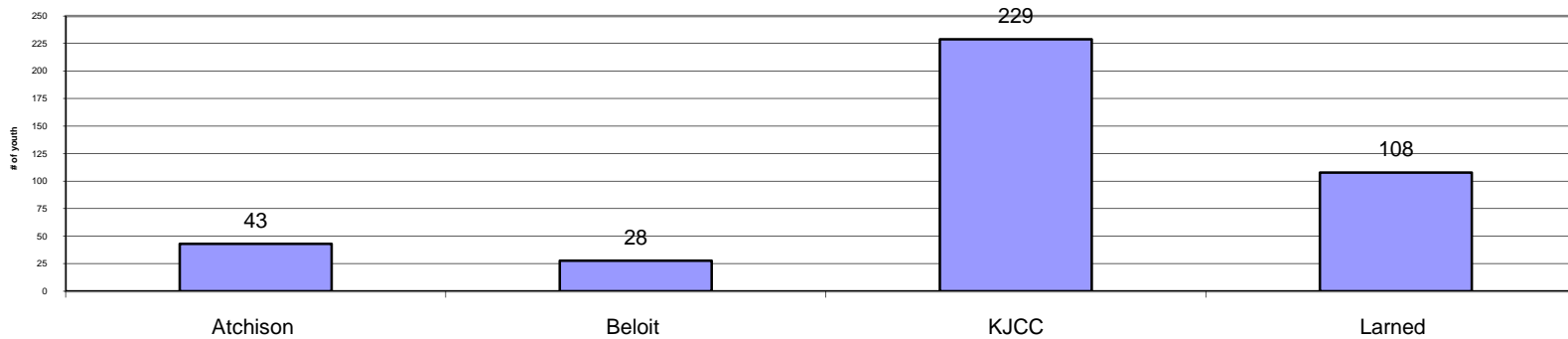
Kansas operates four Juvenile Correctional Facilities. All males entering a Juvenile Correctional Facility are admitted through the Reception and Diagnostic Unit (RDU) at the Kansas Juvenile Correctional Complex (KJCC). Upon completion of a classification assessment at the RDU, males serve out their sentence at either the KJCC location in Topeka, Larned JCF or Atchison JCF. Atchison JCF primarily serves youth age 15.5 and younger. Beloit JCF is the only facility that receives female admissions and is the RDU for females.

FY2007 JCF Admission by Gender



	Atchison	Beloit	KJCC	Larned	All JCF
FY 07 Average Daily Population	43.0	27.7	229.0	107.9	407.7

FY2007 Average Daily Population



JCF Detail: Statewide

Youth Entering All JCF	Jul	Aug	Sep	Oct	Nov	Dec	Jan	Feb	Mar	Apr	May	Jun	Tot	Mo.avg
New commitments	22	38	25	31	27	33	25	38	28	35	30	35	367	30.6
Return due to Technical Violations of conditional Release	10	13	12	15	12	12	9	9	12	10	11	9	134	11.2
Return due to new crime while on conditional release	2	3	1	1	2	1	2	5	3	3	4	3	30	2.5
Return from Discharge with new adjudication	0	0	0	1	0	0	0	1	0	0	2	0	4	0.3
Other Admission Reason ¹	0	0	0	0	0	0	0	0	0	0	0	0	0	0.0
Total Entries into JCF	34	54	38	48	41	46	36	53	43	48	47	47	535	44.6
Youth Exiting Facility	Jul	Aug	Sep	Oct	Nov	Dec	Jan	Feb	Mar	Apr	May	Jun	Tot	Mo.avg
Conditional Releases	44	39	34	45	49	37	35	31	34	31	49	30	458	38.2
Direct Discharges	0	1	1	4	1	5	1	1	2	1	3	2	22	1.8
Total Exits from Facility	44	40	35	49	50	42	36	32	36	32	52	32	480	40.0
Month End Population	Jul	Aug	Sep	Oct	Nov	Dec	Jan	Feb	Mar	Apr	May	Jun	Tot	Mo.avg
Youth placed in JCF who are temporarily not located at facility ²	5	3	2	6	8	5	5	5	5	5	6	6		5.1
Total # Youth placed in JCF on last day of the month	387	397	400	399	390	394	394	415	422	438	433	448		409.8

¹ Entry into JCF for reason of 90 psychological evaluation, administrative placement or custody of Kansas Dept. of Corrections

² Youth may be located outside a JCF related to transportation to and from court hearings, etc. This status is also referred to as an "out count".

JCF Detail: Atchison Juvenile Correctional Facility

Youth Entering Atchison Facility	Jul	Aug	Sep	Oct	Nov	Dec	Jan	Feb	Mar	Apr	May	Jun	Tot	Mo.avg
New commitments	0	0	0	0	0	0	0	0	0	0	0	0	0	0.0
Return due to Technical Violations of conditional Release	0	0	0	0	0	0	0	0	0	0	0	0	0	0.0
Return due to new crime while on conditional release	0	0	0	0	0	0	0	0	0	0	0	0	0	0.0
Return from Discharge with new adjudication	0	0	0	0	0	0	0	0	0	0	0	0	0	0.0
Other Admission Reason ¹	0	0	0	0	0	0	0	0	0	0	0	0	0	0.0
Transferring In from another JCF	2	7	2	5	2	3	5	6	3	10	8	0	57	4.8
Total Entries into JCF	2	7	2	5	2	3	5	6	3	10	8	0	57	4.8
Youth Exiting Facility	Jul	Aug	Sep	Oct	Nov	Dec	Jan	Feb	Mar	Apr	May	Jun	Tot	Mo.avg
Transferred out to another JCF	0	6	0	0	2	0	0	1	1	0	2	0	12	1.0
Conditional Releases	3	3	1	2	0	6	4	0	2	1	5	1	28	2.3
Direct Discharges	0	0	0	0	0	0	0	0	1	0	0	0	1	0.1
Total Exits from Facility	3	9	1	2	2	6	4	1	4	1	7	1	41	3.4
Month End Population	Jul	Aug	Sep	Oct	Nov	Dec	Jan	Feb	Mar	Apr	May	Jun	Tot	Mo.avg
Youth placed in JCF who are temporarily not located at facility ²	0	0	0	0	0	0	0	0	0	0	0	0		0.0
Total # Youth placed in JCF on last day of the month	39	37	38	41	41	38	39	44	43	52	53	56		43.4

¹ Entry into JCF for reason of 90 psychological evaluation, administrative placement or custody of Kansas Dept. of Corrections

² Youth may be located outside a JCF related to transportation to and from court hearings, etc. This status is also referred to as an "out count".

JCF Detail: Beloit Juvenile Correctional Facility

Youth Entering Beloit Facility	Jul	Aug	Sep	Oct	Nov	Dec	Jan	Feb	Mar	Apr	May	Jun	Tot	Mo.avg
New commitments	1	4	5	2	4	2	1	0	3	3	4	4	33	2.8
Return due to Technical Violations of conditional Release	2	0	1	0	1	1	3	0	2	3	0	3	16	1.3
Return due to new crime while on conditional release	0	0	0	1	0	0	0	0	0	0	0	0	1	0.1
Return from Discharge with new adjudication	0	0	0	0	0	0	0	1	0	0	1	0	2	0.2
Other Admission Reason ¹	0	0	0	0	0	0	0	0	0	0	0	0	0	0.0
Transferring In from another JCF (N/A)	0	0	0	0	0	0	0	0	0	0	0	0	0	0.0
Total Entries into JCF	3	4	6	3	5	3	4	1	5	6	5	7	52	4.3
Youth Exiting Facility	Jul	Aug	Sep	Oct	Nov	Dec	Jan	Feb	Mar	Apr	May	Jun	Tot	Mo.avg
Transferred out to another JCF (N/A)	0	0	0	0	0	0	0	0	0	0	0	0	0	N/A
Conditional Releases	2	4	2	6	2	2	2	2	7	2	3	4	38	3.2
Direct Discharges	0	0	1	1	0	0	0	1	0	0	0	1	4	0.3
Total Exits from Facility	2	4	3	7	2	2	2	3	7	2	3	5	42	3.5
Month End Population	Jul	Aug	Sep	Oct	Nov	Dec	Jan	Feb	Mar	Apr	May	Jun	Tot	Mo.avg
Youth placed in JCF who are temporarily not located at facility ²	0	0	0	0	4	1	1	1	0	0	0	0		0.6
Total # Youth placed in JCF on last day of the month	25	25	28	24	27	28	30	28	26	30	32	34		28.1

¹ Entry into JCF for reason of 90 psychological evaluation, administrative placement or custody of Kansas Dept. of Corrections

² Youth may be located outside a JCF related to transportation to and from court hearings, etc. This status is also referred to as an "out count".

JCF Detail: Kansas Juvenile Correctional Complex

KJCC operates the Reception and Diagnostics Unit (RDU) for all males committed to a JCF. Once a juvenile has completed assessment through RDU, they may be transferred to another JCF to serve the remainder of their sentence.

Youth Entering KJCC Facility	Jul	Aug	Sep	Oct	Nov	Dec	Jan	Feb	Mar	Apr	May	Jun	Tot	Mo.avg
New commitments	21	34	20	29	22	31	24	38	25	32	25	31	332	27.7
Return due to Technical Violations of conditional Release	8	13	11	15	11	11	6	9	10	7	11	6	118	9.8
Return due to new crime while on conditional release	2	3	1	0	2	1	2	5	3	3	4	2	28	2.3
Return from Discharge with new adjudication	0	0	0	1	0	0	0	0	0	0	1	0	2	0.2
Other Admission Reason ¹	0	0	0	0	0	0	0	0	0	0	0	0	0	0.0
Transferring In from another JCF	1	4	0	0	1	0	1	0	3	2	1	1	14	1.2
Total Entries into JCF	32	54	32	45	36	43	33	52	41	44	42	40	494	41.2
Youth Exiting Facility	Jul	Aug	Sep	Oct	Nov	Dec	Jan	Feb	Mar	Apr	May	Jun	Tot	Mo.avg
Transferred out to another JCF	7	18	18	6	8	15	24	15	18	28	21	12	190	15.8
Conditional Releases	29	28	21	29	34	19	24	18	21	19	33	14	289	24.1
Direct Discharges	0	1	0	1	0	3	0	0	0	1	1	1	8	0.7
Total Exits from Facility	36	47	39	36	42	37	48	33	39	48	55	27	487	40.6
Month End Population	Jul	Aug	Sep	Oct	Nov	Dec	Jan	Feb	Mar	Apr	May	Jun	Tot	Mo.avg
Youth placed in JCF who are temporarily not located at facility ²	5	2	1	4	3	3	4	4	4	2	4	3		3.3
Total # Youth placed in JCF on last day of the month	222	229	222	231	225	231	216	235	237	233	220	233		227.8

¹ Entry into JCF for reason of 90 psychological evaluation, administrative placement or custody of Kansas Dept. of Corrections

² Youth may be located outside a JCF related to transportation to and from court hearings, etc. This status is also referred to as an "out count".

JCF Detail: Larned Juvenile Correctional Facility

Youth Entering Larned Facility	Jul	Aug	Sep	Oct	Nov	Dec	Jan	Feb	Mar	Apr	May	Jun	Tot	Mo.avg
New commitments	0	0	0	0	1	0	0	0	0	0	0	0	2	0.2
Return due to Technical Violations of conditional Release	0	0	0	0	0	0	0	0	0	0	0	0	0	0.0
Return due to new crime while on conditional release	0	0	0	0	0	0	0	0	0	0	0	0	1	0.1
Return from Discharge with new adjudication	0	0	0	0	0	0	0	0	0	0	0	0	0	0.0
Other Admission Reason ¹	0	0	0	0	0	0	0	0	0	0	0	0	0	0.0
Transferring In from another JCF	5	13	16	1	7	12	20	10	15	18	0	0	139	11.6
Total Entries into JCF	5	13	16	1	8	12	20	10	15	18	0	0	142	11.8
Youth Exiting Facility	Jul	Aug	Sep	Oct	Nov	Dec	Jan	Feb	Mar	Apr	May	Jun	Tot	Mo.avg
Transferred out to another JCF	1	0	0	0	0	0	2	0	2	2	0	1	8	0.7
Conditional Releases	10	4	10	8	13	10	5	11	4	9	8	11	103	8.6
Direct Discharges	0	0	0	2	1	2	1	0	1	0	2	0	9	0.8
Total Exits from Facility	11	4	10	10	14	12	8	11	7	11	10	12	120	10.0
Month End Population	Jul	Aug	Sep	Oct	Nov	Dec	Jan	Feb	Mar	Apr	May	Jun	Tot	Mo.avg
Youth placed in JCF who are temporarily not located at facility ²	0	1	1	2	1	1	0	0	1	3	2	3		1.3
Total # Youth placed in JCF on last day of the month	97	106	112	103	97	97	109	108	116	123	128	125		110.1

¹ Entry into JCF for reason of 90 psychological evaluation, administrative placement or custody of Kansas Dept. of Corrections

² Youth may be located outside a JCF related to transportation to and from court hearings, etc. This status is also referred to as an "out count".

Juvenile Correctional Facility Youth Characteristics

Month End Population Characteristics

Atchison	Jul	Aug	Sep	Oct	Nov	Dec	Jan	Feb	Mar	Apr	May	Jun
Average Months in JCF	9.51	8.4	8.4	9.8	10.7	10.4	10.5	10.2	9.5	8.6	8.6	8.9
Median Months In JCF	5.8	6.0	7.0	8.0	9.1	8.0	8.6	6.9	7.1	5.3	4.8	5.7
Average Age	15.3	15.1	15.2	15.2	15.3	15.3	15.3	15.3	15.2	15.3	15.3	15.3
Median Age	15.0	15.0	15	15.3	15.3	15.3	15.4	15.4	15.3	15.4	15.5	15.4

Beloit	Jul	Aug	Sep	Oct	Nov	Dec	Jan	Feb	Mar	Apr	May	Jun
Average Months in JCF	9.2	8.7	8.7	6.5	6.5	6.8	6.1	6.4	5.8	5.2	5.3	5.3
Median Months In JCF	5.0	4.4	3.4	3.5	3.1	3.6	4.1	6.7	4.5	4	4.8	3
Average Age	18.0	17.8	17.9	17.8	17.9	17.9	17.8	18.0	17.7	17.7	17.7	17.6
Median Age	18.0	18.0	18.0	17.6	17.8	17.9	17.8	18.0	17.9	17.9	17.9	17.8

KJCC	Jul	Aug	Sep	Oct	Nov	Dec	Jan	Feb	Mar	Apr	May	Jun
Average Days in RDU	N/A	N/A	79	8.2	19.2	12.5	14.1	6.4	12.2	12.7	11.1	22
Average Mos. for non RDU Youth	N/A	N/A	11.7	7.5	7.5	7.8	8.0	7.6	7.5	8.2	8.5	9
Average Months for all Youth	6.81	6.5	6.4	6.9	7.0	7.3	7.7	7.3	7.5	7.8	7.9	8
Median Months for Non RDU Youth	N/A	N/A	9.4	5.1	5.5	5.6	5.7	4.9	4.1	5.1	5.1	5.7
Median Months for all Youth	4.4	4.4	4.8	4.6	4.7	4.9	5.1	7.7	4.1	4.6	5.4	4.5
Average Age All Youth	18.5	17.8	17.8	17.9	17.9	17.9	17.9	18.7	18.1	17.9	17.9	17.9
Median Age All Youth	18.5	18.2	17.9	18.0	18.0	18.0	18.0	18.6	17.9	17.8	17.8	17.9

Larned	Jul	Aug	Sep	Oct	Nov	Dec	Jan	Feb	Mar	Apr	May	Jun
Average Months in JCF	8.9	8.8	8.7	9.2	9.6	8.8	8.3	8.7	8.7	7.9	8.0	8
Median Months In JCF	6.7	6.8	5.4	7.4	7.2	7.6	5.8	6.9	6.4	4.8	5.4	5.2
Average Age	18.0	18.1	18.1	17.9	18.2	17.9	18.1	18.5	18.1	18	17.9	18
Median Age	18.0	18.0	18.0	18.0	18.1	18.2	18.2	18.7	18.3	18.1	18.1	18.1