

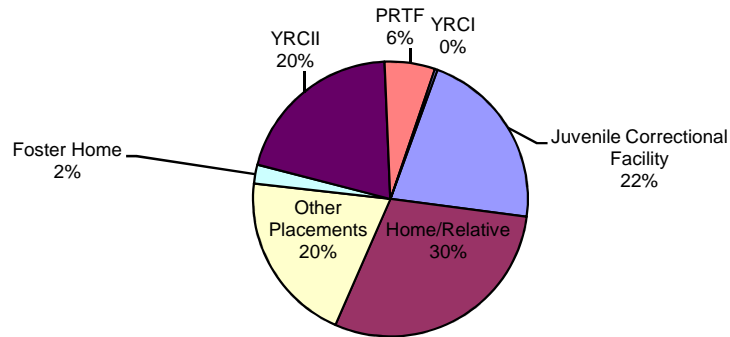
Statewide Month End Population: Placements for Youth in the Custody of JJA on the Last Day of Each Month

Youth are placed in JJA custody by the court and may be placed at home, with relatives, in a juvenile correctional facility or in another type of community placement. Data below is summary information for youth in JJA custody on the last day of a month with comparative data from previous years.

Placement Summary

State Fiscal Year 2008	Jul	Aug	Sep	Oct	Nov	Dec	Jan	Feb	Mar	Apr	May	Jun	FY08 Avg.	FY08 Plcmt Avg As % of Total
Juvenile Correctional Facility	420	425	409	401	405	409	413	393	390	387	384	381	401.4	21.5%
Detention	188	166	172	179	187	175	180	177	176	182	170	186	178.2	9.5%
Facility/Other ¹	84	76	76	82	92	87	91	92	98	102	95	90	88.8	4.8%
Foster Home	38	38	39	36	42	43	47	49	47	46	37	38	41.7	9.5%
Home/Relative	543	564	575	561	540	574	551	570	548	534	544	511	551.3	4.8%
AWOL	106	97	106	115	116	118	107	109	111	104	111	117	109.8	5.9%
Psychiatric Residential Treatment Center	174	154	148	132	115	101	93	88	87	86	76	80	111.2	6.0%
Not Reported	1	1	1	2	2	0	1	0	1	0	2	3	1.2	0.1%
Youth Residential Center I	4	7	6	11	5	5	7	5	1	2	8	8	5.8	0.3%
Youth Residential Center II	309	335	369	385	397	385	409	413	399	401	376	368	378.8	20.3%
Total Custody Population	1,867	1,863	1,901	1,904	1,901	1,897	1,899	1,896	1,858	1,844	1,803	1,782	1867.9	100.0%
% Change from Previous Year	0.81%	0.27%	2.54%	1.17%	0.16%	-0.84%	0.48%	0.90%	-1.28%	-3.00%	-4.60%	-5.66%	-0.75%	

FY08 Average Placement Setting Distribution for JJA Custody Youth



Fiscal Year Flashback

	FY07 Mo. Avg	FY06 Mo. Avg	FY05 Mo. Avg
Juvenile Correctional Facility	390.9	404.3	434.0
Level VI	69.8	98.4	108.2
Level V	283.3	321.4	319.7
Detention	191.2	154.3	145.5
Facility/Other*	257.3	273.9	321.2
Foster Home	57.6	54.9	45.5
Home/Relative	614.2	538.3	465.5
AWOL	135.3	123.8	96.8
Not Reported	1.2	0.8	0.0
Total Custody Population	2002.7	1970.2	1936.3

¹ Includes Emergency Shelter, Maternity or Substance Abuse Residential Treatment, Hospital, Independent Living, Job Corp

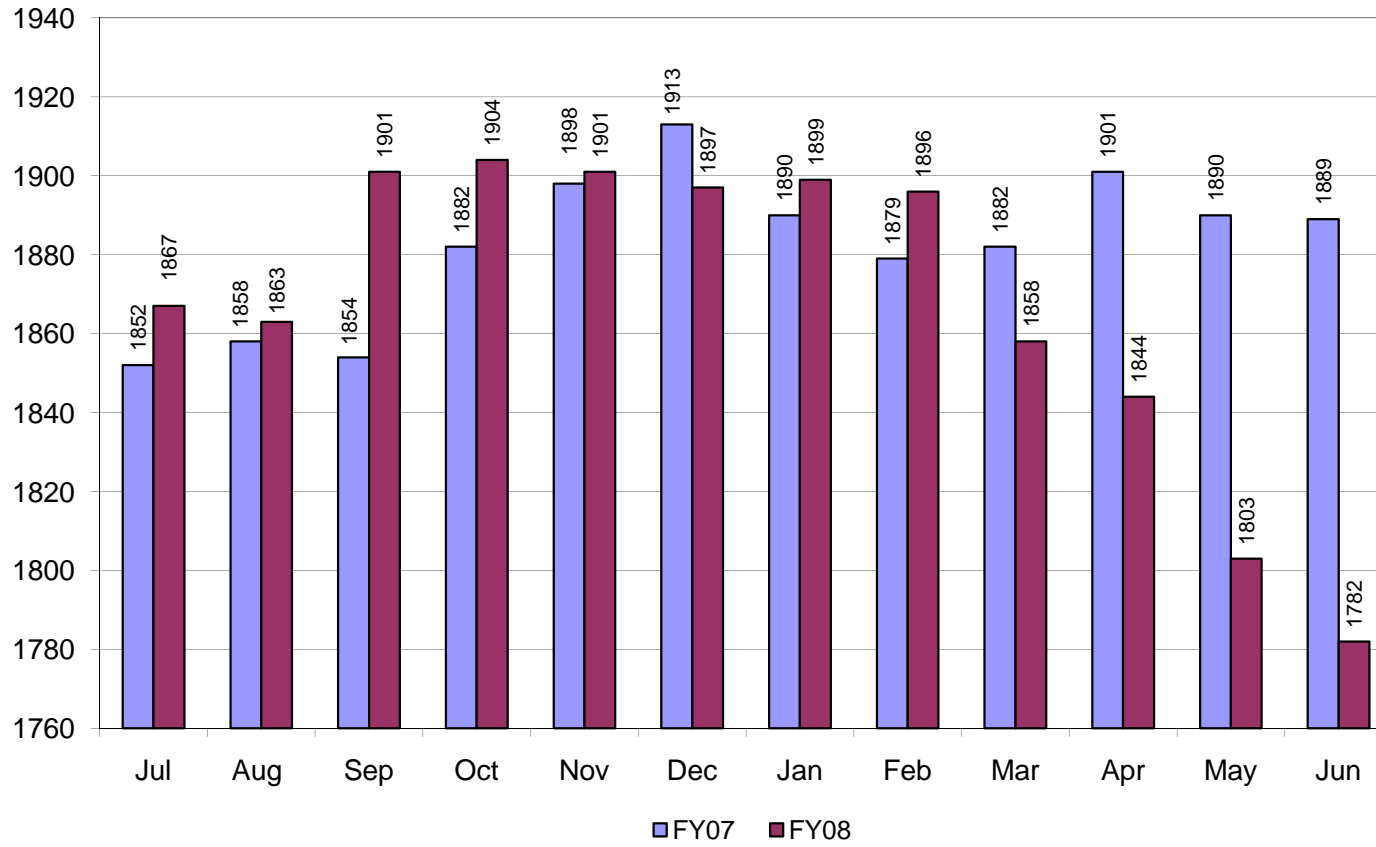
² In August of 2006, Relative became a placement category separate from home.

³ In July of 2007, new placements were added and some placements no longer exist due to Medicaid changes.

**Statewide Month End Population: Placements for Youth in the Custody of JJA on the Last Day of Each Month
Placement Detail**

Placements	Jul	Aug	Sep	Oct	Nov	Dec	Jan	Feb	Mar	Apr	May	Jun	Avg	Avg as a %
Community Integration Program	19	18	19	19	20	19	17	15	13	13	13	12	16.4	1%
Correctional Therapeutic Foster Care	0	0	0	0	0	0	12	11	9	10	9	12	5.3	0%
Detention	188	166	172	179	187	175	180	177	176	182	170	186	178.2	10%
Diversion Foster Care	10	12	10	8	7	4	1	0	0	0	0	0	4.3	0%
Emergency Foster Care	0	0	0	1	1	1	2	1	1	1	0	0	0.7	0%
Emergency Shelter	15	17	11	19	24	22	18	24	23	37	14	10	19.5	1%
Family Resource Home	3	4	6	7	9	6	4	4	2	2	1	1	4.1	0%
Foster Care	0	0	0	0	0	0	0	0	0	0	0	0	0.0	0%
Home	543	564	575	561	540	574	545	565	545	529	540	506	548.9	29%
Hospital	4	4	5	3	3	2	7	7	6	5	5	5	4.7	0%
Independent Living	13	15	17	15	18	19	20	21	19	19	24	21	18.4	1%
Job Corps	0	0	0	0	0	0	0	0	0	0	0	0	0.0	0%
Juvenile Correctional Facility	420	425	409	401	405	409	413	393	390	387	384	381	401.4	21%
Juvenile Offender Aftercare	3	3	2	2	2	2	1	0	0	0	0	0	1.3	0%
Kinship/Non-Related Kin Care	0	0	0	0	0	1	2	3	4	3	4	2	1.6	0%
Maternity Resource Home	1	1	1	1	1	1	0	0	0	0	0	0	0.5	0%
Not Reported	1	1	1	1	1	0	1	0	1	0	2	3	1.0	0%
Observation/Stabilization	1	1	2	2	1	1	1	1	1	1	1	1	1.2	0%
Psychiatric Residential Treatment Facility	174	154	148	132	115	101	93	88	87	86	76	80	111.2	6%
Residential Drug/Alcohol Treatment	11	8	7	7	4	5	5	5	6	4	7	10	6.6	0%
Relative Placement	0	0	0	0	0	0	6	5	3	5	4	5	2.3	0%
Residential Maternity Group Home	10	7	7	5	6	2	3	5	5	4	4	5	5.3	0%
Runaway/ AWOL	106	97	106	115	116	118	107	109	111	104	111	117	109.8	6%
Sanction House	2	1	1	1	2	2	2	1	4	2	1	1	1.7	0%
Satellite Foster Care	2	3	3	2	2	4	1	1	0	0	0	0	1.5	0%
Specialized Family Resource Home	18	15	16	14	18	21	22	26	26	26	21	21	20.3	1%
Therapeutic Foster Care	4	3	3	3	4	4	3	3	5	4	2	2	3.3	0%
Transitional Living Program	6	2	5	9	10	11	15	13	21	17	26	25	13.3	1%
Transitional Treatment Foster Care	0	0	0	1	1	1	0	0	0	0	0	0	0.3	0%
Youth Residential Center I	4	7	6	11	5	5	7	5	1	2	8	8	5.8	0%
Youth Residential Center II	309	335	369	385	399	387	411	413	399	401	376	368	379.3	20%
Total	1,867	1,863	1,901	1,904	1,901	1,897	1,899	1,896	1,858	1,844	1,803	1,782	1,868	100%

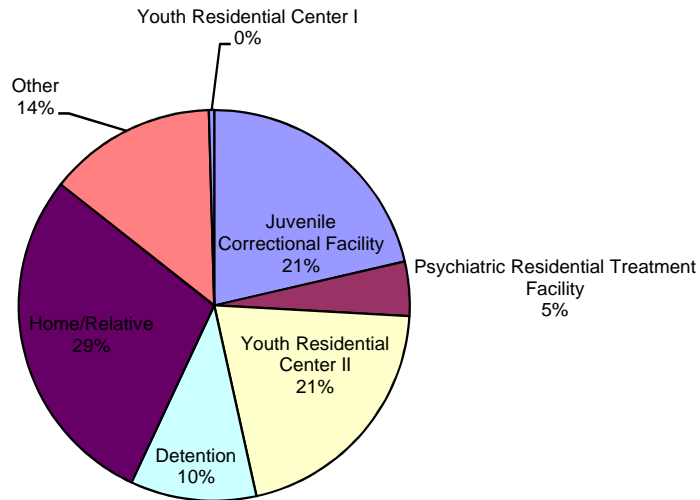
Statewide JJA Custody Month End Population



Statewide Month End Population: Placements for Youth in the Custody of JJA on June 30, 2008 by Judicial District

	Judicial District																															Tot	%
	1	2	3	4	5	6	7	8	9	10	11	12	13	14	16	15/17/23	18	19	20	21	22	24	25	26	27	28	29	30	31				
Juvenile Correctional Facility	15	5	34	7	6	4	6	10	7	23	5	4	13	6	8	2	100	5	7	2	8	0	11	12	4	9	62	4	2	381	21.38%		
Detention	5	1	12	3	3	3	2	3	0	14	1	1	3	7	4	2	60	5	2	0	1	0	10	4	2	6	26	1	5	186	10.44%		
Facility/Other	3	3	0	2	0	2	5	1	1	6	5	2	3	3	1	0	32	2	2	0	1	0	4	1	1	1	8	1	0	90	5.05%		
Foster Home	0	0	2	1	1	0	0	0	0	2	6	0	0	1	4	9	3	0	1	0	0	1	5	1	0	0	1	0	0	38	2.13%		
Home/Relative	30	8	26	5	12	2	11	13	2	31	5	1	14	11	8	5	151	14	10	2	15	1	24	17	7	2	62	9	13	511	28.68%		
AWOL	10	1	6	0	1	3	0	0	1	3	4	0	1	1	0	0	51	3	2	0	0	0	4	4	0	2	16	2	2	117	6.57%		
Psychiatric Residential Treatment Facility	3	0	7	3	0	0	8	2	1	9	1	1	4	4	1	3	2	6	1	2	2	1	1	0	3	4	4	4	3	80	4.49%		
Youth Residential Center I	0	0	0	0	0	0	0	2	0	0	0	0	0	0	0	0	3	0	0	0	0	0	1	1	0	0	1	0	0	8	0.45%		
Youth Residential Center II	9	5	25	10	8	5	7	10	3	17	11	2	7	15	1	4	131	6	15	4	2	1	10	6	12	4	29	0	9	368	20.65%		
Not Reported	0	0	0	0	0	0	0	2	0	0	0	0	0	0	0	0	0	0	0	1	0	0	0	0	0	0	0	0	0	3	0.17%		
Total	75	23	112	31	31	19	39	43	15	105	38	11	45	48	27	25	533	41	40	11	29	4	70	46	29	28	209	21	34	1782	100.0%		

Month End Placement Distribution



Statewide Adjudication Information by Month

Most Recent Adjudication for Youth in JJA Custody Who are Served in a Community Placement

Offense Level	Jul	Aug	Sep	Oct	Nov	Dec	Jan	Feb	Mar	Apr	May	Jun	Mon. Avg.	Avg As a % of Tot.
Misdemeanor	825	793	791	788	750	750	759	762	760	755	729	719	765.1	54.3%
Felony	687	676	672	684	647	642	642	646	617	612	592	596	642.8	45.7%
Total	1,512	1,469	1,463	1,472	1,397	1,392	1,401	1,408	1,377	1,367	1,321	1,315	1,407.8	100.0%

Most Recent Adjudication for Youth in JJA Custody Who Are In Juvenile Correctional Facility Placement

Offense Level	Jul	Aug	Sep	Oct	Nov	Dec	Jan	Feb	Mar	Apr	May	Jun	Mon. Avg.	Avg As a % of Tot.
Misdemeanor	62	58	53	55	60	53	61	51	49	54	56	54	55.5	13.8%
Felony	366	367	359	352	350	356	351	340	341	331	328	326	347.3	86.2%
Total	428	425	412	407	410	409	412	391	390	385	384	380	402.8	100.0%

Most Recent Adjudication for Youth in JJA Custody

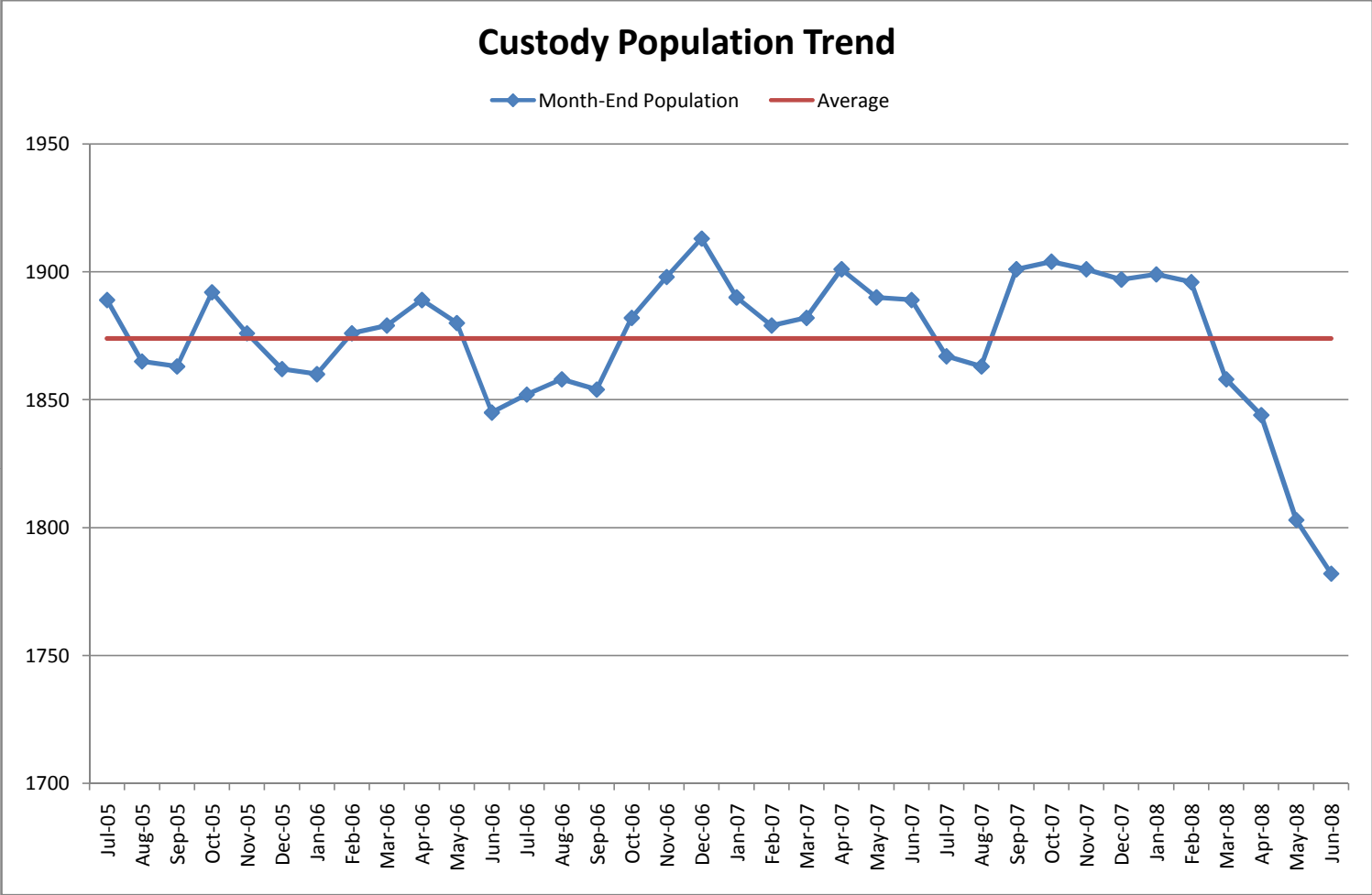
Offense Level	Jul	Aug	Sep	Oct	Nov	Dec	Jan	Feb	Mar	Apr	May	Jun	Mon. Avg.	Avg As a % of Tot.
Misdemeanor	887	851	844	843	810	803	820	813	809	809	785	773	820.6	45.3%
Felony	1,053	1,043	1,031	1,036	997	998	993	986	958	943	920	922	990.0	54.7%
Total	1,940	1,894	1,875	1,879	1,807	1,801	1,813	1,799	1,767	1,752	1,705	1,695	1,810.6	100.0%

Length of Stay for Youth whose Placement Type Ended During the FY2008 Month

		Jul	Aug	Sep	Oct	Nov	Dec	Jan	Feb	Mar	Apr	May	Jun	Avg.
PRTF	# placements	33	60	32	47	31	28	31	22	27	16	34	15	31
	Average # days	15.2	44.4	62.4	77.3	99.2	100.5	103.3	113.0	111.6	107.4	94.9	81.5	84.2
	Median # days	16.0	44.0	70.0	93.0	103.0	88.5	85.0	105.5	91.0	86.0	83.0	73.0	85.5
YRCI	# placements	2	1	2	1	5	2	2	1	3	0	2	2	2
	Average # days	21.5	32.0	47.0	75.0	66.2	8.5	23.0	129.0	116.7	0.0	151.5	43.0	59.5
	Median # days	21.5	32.0	47.0	75.0	42.0	8.5	23.0	129.0	130.0	0.0	151.5	43.0	42.5
YRCII	# placements	71	97	84	89	98	108	89	108	108	127	136	103	102
	Average # days	13.1	34.9	55.0	64.9	73.5	90.4	87.8	89.3	102.1	71.1	102.4	96.5	73.4
	Median # days	11.0	37.0	64.5	71.0	74.0	90.5	87.0	88.5	91.5	51.0	88.0	84.0	79.0

Length of Stay for Youth in Respective Placement Type on the Last Day of the Month during FY2008

		Jul	Aug	Sep	Oct	Nov	Dec	Jan	Feb	Mar	Apr	May	Jun	Avg.
PRTF	# youth	174	154	148	132	115	101	93	88	87	86	76	80	111
	Average # days	27.4	46.4	75.4	77.8	77.7	90.8	92.6	92.5	92.2	95.5	97.8	106.7	81.1
	Median # days	30.0	60.0	88.0	82.0	79.0	76.0	85.0	75.0	67.0	70.0	69.5	74.5	74.8
YRCI	# youth	4	7	6	11	5	5	7	5	1	2	8	8	6
	Average # days	19.8	29.4	58.2	40.0	62.0	76.6	77.7	107.6	233.0	133.5	13.4	33.3	73.7
	Median # days	25.5	23.0	61.5	22.0	59.0	81.0	98.5	123.0	233.0	133.5	10.0	37.0	60.3
YRCII	# youth	309	335	369	384	397	385	411	413	399	401	376	368	379
	Average # days	26.5	41.6	63.8	64.9	70.3	75.2	78.7	80.0	86.3	84.7	82.1	82.7	69.7
	Median # days	30.0	58.0	62.5	60.0	66.0	60.0	64.0	62.0	67.0	62.0	60.0	60.5	61.3



AWOL Population Month-End Trend

Month-End AWOL Count Average

