

Juvenile Correctional Facility Population Activity

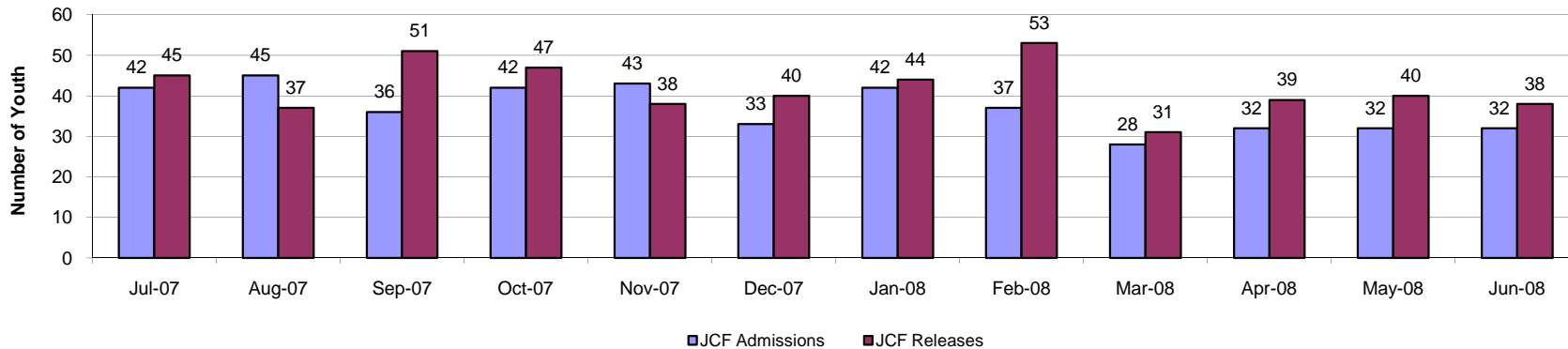
Youth in JJA custody may be placed in a setting outside their home such as relative, foster home, group home, or Juvenile Correctional Facility (JCF). Youth placed in a JCF are committed to a JCF by court order pursuant to K.S.A. 38-16,129. Information in this report includes census information on youth admitted to a JCF during FY2008.



There were 18% more releases than admissions during the month of June. The statewide month end population for June 2008 (380) is 15.2% less than the month end population of June 2007 (448).

Statewide JCF Activity Summary	Jul-07	Aug-07	Sep-07	Oct-07	Nov-07	Dec-07	Jan-08	Feb-08	Mar-08	Apr-08	May-08	Jun-08	Total	FY08 Avg.
JCF Admissions	42	45	36	42	43	33	42	37	28	32	32	32	444	37.0
JCF Releases	45	37	51	47	38	40	44	53	31	39	40	38	503	41.9
Month End Population	443	451	436	430	435	429	427	411	408	401	393	387	N/A	420.9

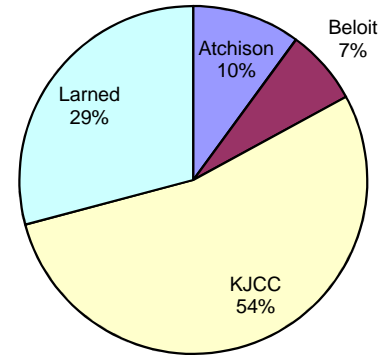
Statewide JCF Admissions and Releases FY08



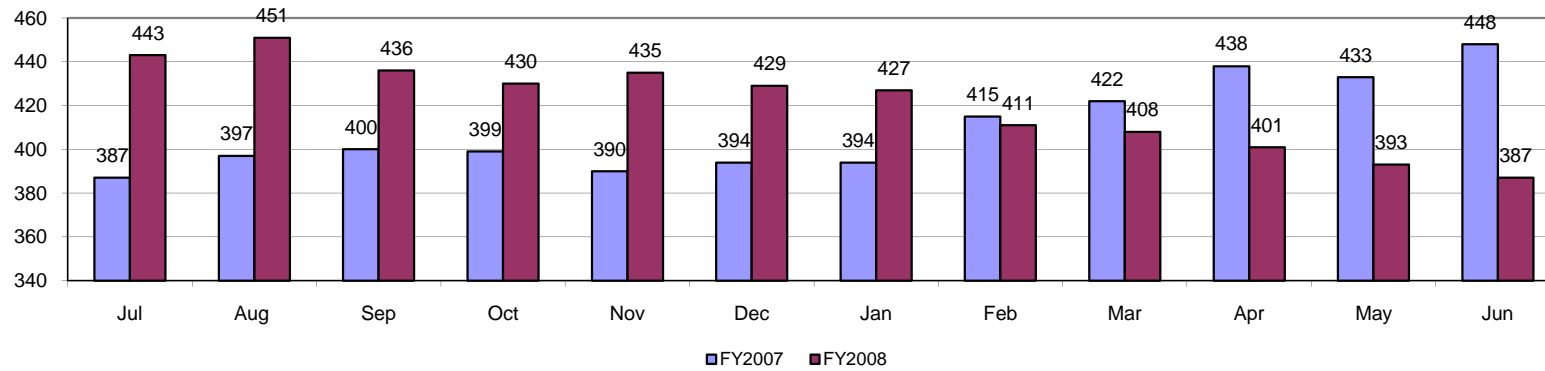
Statewide JCF Month End Population

The average month end population for FY08 (419) is 2.1% higher than the average month end population during FY07 (410).

**Fiscal Year 2008 Average:
Youth JCF Placement Distribution**



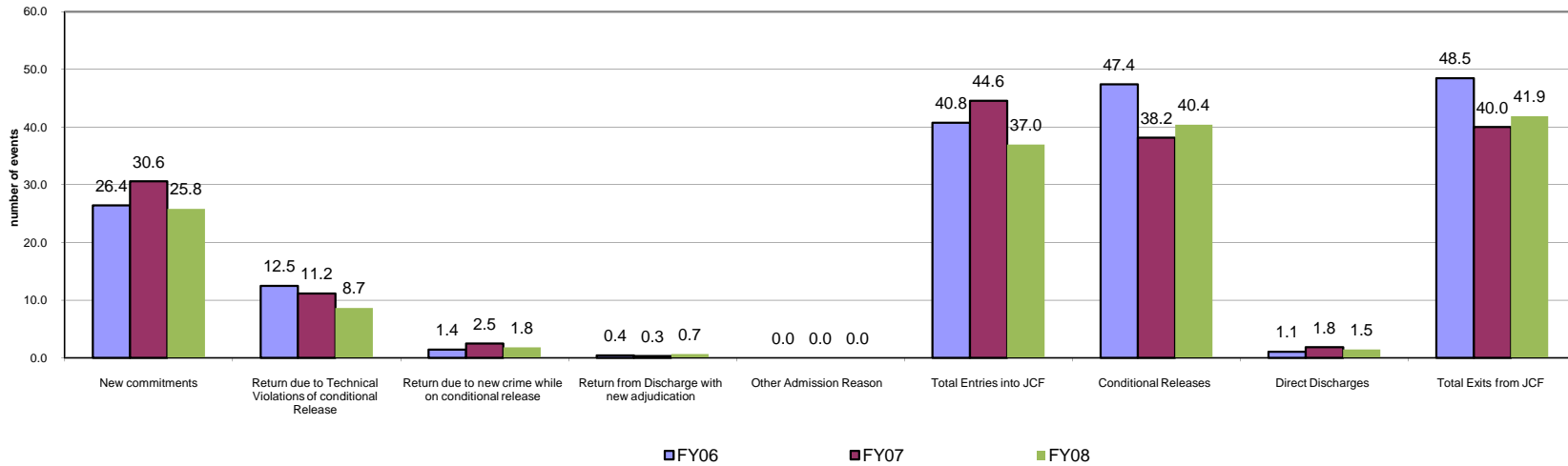
Statewide Juvenile Correctional Facility Month End Population



Fiscal Year Flashback
Census Events: Average Monthly Frequency

	FY05	FY06	FY07	FY08
New commitments	30	26.4	30.6	25.8
Return due to Technical Violations of conditional Release	11	12.5	11.2	8.7
Return due to new crime while on conditional release	1	1.4	2.5	1.8
Return from Discharge with new adjudication	0	0.4	0.3	0.7
Other Admission Reason	0	0.0	0.0	0.0
Total Entries into JCF	42	40.8	44.6	37.0
Conditional Releases	42	47.4	38.2	40.4
Direct Discharges	1	1.1	1.8	1.5
Total Exits from JCF	43	48.5	40.0	41.9

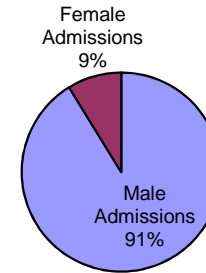
Statewide Avg. JCF Census # Events Across Years



Statewide JCF Characteristics

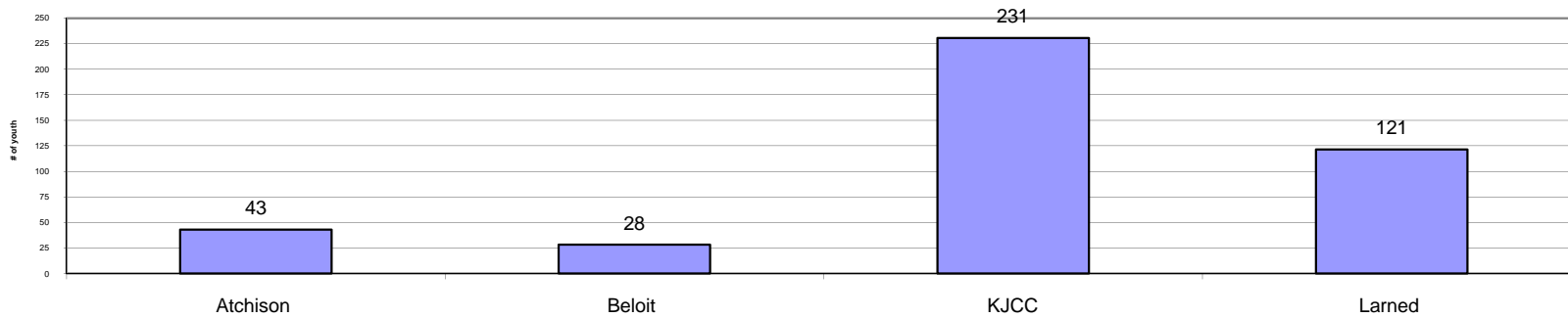
Kansas operates four Juvenile Correctional Facilities. All males entering a Juvenile Correctional Facility are admitted through the Reception and Diagnostic Unit (RDU) at the Kansas Juvenile Correctional Complex (KJCC). Upon completion of a classification assessment at the RDU, males serve out their sentence at either the KJCC location in Topeka, Larned JCF or Atchison JCF. Atchison JCF primarily serves youth age 15.5 and younger. Beloit JCF is the only facility that receives female admissions and is the RDU for females.

FY2008 JCF Admission by Gender



	Atchison	Beloit	KJCC	Larned	All JCF
FY 08 Average Daily Population	42.8	28.3	230.6	121.5	423.3

FY2008 Average Daily Population



JCF Detail: Statewide

Youth Entering All JCF	Jul-07	Aug-07	Sep-07	Oct-07	Nov-07	Dec-07	Jan-08	Feb-08	Mar-08	Apr-08	May-08	Jun-08	Tot	Mo.avg
New Commitments	31	32	29	27	26	19	29	29	20	20	23	25	310	25.8
Return due to Technical Violations of Conditional Release	8	11	6	10	14	10	8	6	7	10	8	6	104	8.7
Return due to New Crime while on Conditional Release	3	1	0	4	2	2	3	2	1	2	1	1	22	1.8
Return from Discharge with New Adjudication	0	1	1	1	1	2	2	0	0	0	0	0	8	0.7
Other Admission Reason ¹	0	0	0	0	0	0	0	0	0	0	0	0	0	0.0
Total Entries into JCF	42	45	36	42	43	33	42	37	28	32	32	32	444	37.0
Youth Exiting Facility	Jul-07	Aug-07	Sep-07	Oct-07	Nov-07	Dec-07	Jan-08	Feb-08	Mar-08	Apr-08	May-08	Jun-08	Tot	Mo.avg
Conditional Releases	42	36	49	46	38	36	44	52	31	37	39	35	485	40.4
Direct Discharges	3	1	2	1	0	4	0	1	0	2	1	3	18	1.5
Total Exits from Facility	45	37	51	47	38	40	44	53	31	39	40	38	503	41.9
Month End Population	Jul-07	Aug-07	Sep-07	Oct-07	Nov-07	Dec-07	Jan-08	Feb-08	Mar-08	Apr-08	May-08	Jun-08	Tot	Mo.avg
Youth placed in JCF who are temporarily not located at facility ²	8	6	5	8	6	2	5	2	4	1	2	2		4.3
Total # Youth placed in JCF on last day of the month	443	451	436	430	435	429	427	411	408	401	393	387		420.9

¹ Entry into JCF for reason of 90 psychological evaluation, administrative placement or custody of Kansas Dept. of Corrections

² Youth may be located outside a JCF related to transportation to and from court hearings, etc. This status is also referred to as an "out count".

JCF Detail: Atchison Juvenile Correctional Facility

Youth Entering Atchison Facility	Jul-07	Aug-07	Sep-07	Oct-07	Nov-07	Dec-07	Jan-08	Feb-08	Mar-08	Apr-08	May-08	Jun-08	Tot	Mo.avg
New Commitments	0	0	0	0	0	0	0	0	0	0	0	0	0	0.0
Return due to Technical Violations of Conditional Release	0	0	0	0	0	0	0	0	0	0	0	0	0	0.0
Return due to New Crime while on Conditional Release	0	0	0	0	0	0	0	0	0	0	0	0	0	0.0
Return from Discharge with New Adjudication	0	0	0	0	0	0	0	0	0	0	0	0	0	0.0
Other Admission Reason ¹	0	0	0	0	0	0	0	0	0	0	0	0	0	0.0
Transferring In from another JCF	1	4	5	2	4	2	8	6	6	1	5	1	45	3.8
Total Entries into JCF	1	4	5	2	4	2	8	6	6	1	5	1	45	3.8
Youth Exiting Facility	Jul-07	Aug-07	Sep-07	Oct-07	Nov-07	Dec-07	Jan-08	Feb-08	Mar-08	Apr-08	May-08	Jun-08	Tot	Mo.avg
Transferred out to another JCF	0	4	1	8	4	0	1	3	6	1	3	2	33	2.8
Conditional Releases	4	3	5	2	3	1	3	1	3	2	1	1	29	2.4
Direct Discharges	0	0	0	0	0	0	0	0	0	0	0	0	0	0.0
Total Exits from Facility	4	7	6	10	7	1	4	4	9	3	4	3	62	5.2
Month End Population	Jul-07	Aug-07	Sep-07	Oct-07	Nov-07	Dec-07	Jan-08	Feb-08	Mar-08	Apr-08	May-08	Jun-08	Tot	Mo.avg
Youth placed in JCF who are temporarily not located at facility ²	0	0	0	0	1	1	2	0	0	0	0	0		0.3
Total # Youth placed in JCF on last day of the month	52	49	48	40	37	38	42	44	41	39	40	38		42.3

¹ Entry into JCF for reason of 90 psychological evaluation, administrative placement or custody of Kansas Dept. of Corrections

² Youth may be located outside a JCF related to transportation to and from court hearings, etc. This status is also referred to as an "out count".

JCF Detail: Beloit Juvenile Correctional Facility

Youth Entering Beloit Facility	Jul-07	Aug-07	Sep-07	Oct-07	Nov-07	Dec-07	Jan-08	Feb-08	Mar-08	Apr-08	May-08	Jun-08	Tot	Mo.avg
New Commitments	6	0	2	4	0	0	1	3	4	1	5	4	30	2.5
Return due to Technical Violations of Conditional Release	0	1	0	1	0	0	1	1	1	0	0	0	5	0.4
Return due to New Crime while on Conditional Release	1	0	0	1	0	0	2	0	0	0	0	0	4	0.3
Return from Discharge with New Adjudication	0	0	0	0	0	0	0	0	0	0	0	0	0	0.0
Other Admission Reason ¹	0	0	0	0	0	0	0	0	0	0	0	0	0	0.0
Transferring In from another JCF (N/A)	0	0	0	0	0	0	0	0	0	0	0	0	0	0.0
Total Entries into JCF	7	1	2	6	0	0	4	4	5	1	5	4	39	3.3
Youth Exiting Facility	Jul-07	Aug-07	Sep-07	Oct-07	Nov-07	Dec-07	Jan-08	Feb-08	Mar-08	Apr-08	May-08	Jun-08	Tot	Mo.avg
Transferred out to another JCF (N/A)	0	0	0	0	0	0	0	0	0	0	0	0	0	N/A
Conditional Releases	4	3	4	4	1	6	2	5	2	3	3	3	40	3.3
Direct Discharges	2	0	1	0	0	0	0	0	0	0	0	0	3	0.3
Total Exits from Facility	6	3	5	4	1	6	2	5	2	3	3	3	43	3.6
Month End Population	Jul-07	Aug-07	Sep-07	Oct-07	Nov-07	Dec-07	Jan-08	Feb-08	Mar-08	Apr-08	May-08	Jun-08	Tot	Mo.avg
Youth placed in JCF who are temporarily not located at facility ²	0	0	0	0	1	0	0	0	0	0	0	0		0.1
Total # Youth placed in JCF on last day of the month	35	33	30	32	31	25	27	26	29	27	29	30		29.5

¹ Entry into JCF for reason of 90 psychological evaluation, administrative placement or custody of Kansas Dept. of Corrections

² Youth may be located outside a JCF related to transportation to and from court hearings, etc. This status is also referred to as an "out count".

JCF Detail: Kansas Juvenile Correctional Complex

KJCC operates the Reception and Diagnostics Unit (RDU) for all males committed to a JCF. Once a juvenile has completed assessment through RDU, they may be transferred to another JCF to serve the remainder of their sentence.

Youth Entering KJCC Facility	Jul-07	Aug-07	Sep-07	Oct-07	Nov-07	Dec-07	Jan-08	Feb-08	Mar-08	Apr-08	May-08	Jun-08	Tot	Mo.avg
New Commitments	25	32	27	23	26	19	28	26	16	18	18	21	279	23.3
Return due to Technical Violations of Conditional Release	8	10	6	9	14	10	7	5	6	10	8	6	99	8.3
Return due to New Crime while on Conditional Release	2	1	0	3	2	2	1	2	1	2	1	1	18	1.5
Return from Discharge with New Adjudication	0	1	1	1	0	2	2	0	0	0	0	0	7	0.6
Other Admission Reason ¹	0	0	0	0	0	0	0	0	0	0	0	0	0	0.0
Transferring In from another JCF	2	3	2	5	4	2	5	3	9	2	2	1	40	3.3
Total Entries into JCF	37	47	36	41	46	35	43	36	32	32	29	29	443	36.9
Youth Exiting Facility	Jul-07	Aug-07	Sep-07	Oct-07	Nov-07	Dec-07	Jan-08	Feb-08	Mar-08	Apr-08	May-08	Jun-08	Tot	Mo.avg
Transferred out to another JCF	13	17	18	12	14	10	26	11	12	11	10	11	165	13.8
Conditional Releases	23	25	27	30	22	17	30	30	19	25	28	20	296	24.7
Direct Discharges	0	0	1	1	0	1	0	1	0	1	1	3	9	0.8
Total Exits from Facility	36	42	46	43	36	28	56	42	31	37	39	34	470	39.2
Month End Population	Jul-07	Aug-07	Sep-07	Oct-07	Nov-07	Dec-07	Jan-08	Feb-08	Mar-08	Apr-08	May-08	Jun-08	Tot	Mo.avg
Youth placed in JCF who are temporarily not located at facility ²	5	5	4	7	4	1	2	1	2	0	1	1	0	2.8
Total # Youth placed in JCF on last day of the month	233	238	228	226	236	243	230	224	225	220	210	205	0	226.5

¹ Entry into JCF for reason of 90 psychological evaluation, administrative placement or custody of Kansas Dept. of Corrections

² Youth may be located outside a JCF related to transportation to and from court hearings, etc. This status is also referred to as an "out count".

JCF Detail: Larned Juvenile Correctional Facility

Youth Entering Larned Facility	Jul-07	Aug-07	Sep-07	Oct-07	Nov-07	Dec-07	Jan-08	Feb-08	Mar-08	Apr-08	May-08	Jun-08	Tot	Mo.avg
New Commitments	0	0	0	0	0	0	0	0	0	1	0	0	1	0.1
Return due to Technical Violations of Conditional Release	0	0	0	0	0	0	0	0	0	0	0	0	0	0.0
Return due to New Crime while on Conditional Release	0	0	0	0	0	0	0	0	0	0	0	0	0	0.0
Return from Discharge with New Adjudication	0	0	0	0	1	0	0	0	0	0	0	0	1	0.1
Other Admission Reason ¹	0	0	0	0	0	0	0	0	0	0	0	0	0	0.0
Transferring In from another JCF	12	14	15	12	12	9	19	5	6	10	6	11	131	10.9
Total Entries into JCF	12	14	15	12	13	9	19	5	6	11	6	11	133	11.1
Youth Exiting Facility	Jul-07	Aug-07	Sep-07	Oct-07	Nov-07	Dec-07	Jan-08	Feb-08	Mar-08	Apr-08	May-08	Jun-08	Tot	Mo.avg
Transferred out to another JCF	2	0	3	0	2	2	5	0	3	1	0	0	18	1.5
Conditional Releases	11	5	13	10	12	12	9	16	7	7	7	11	120	10.0
Direct Discharges	1	1	0	0	0	3	0	0	0	1	0	0	6	0.5
Total Exits from Facility	14	6	16	10	14	17	14	16	10	9	7	11	144	12.0
Month End Population	Jul-07	Aug-07	Sep-07	Oct-07	Nov-07	Dec-07	Jan-08	Feb-08	Mar-08	Apr-08	May-08	Jun-08	Tot	Mo.avg
Youth placed in JCF who are temporarily not located at facility ²	3	1	1	1	0	0	1	1	2	1	1	1		1.1
Total # Youth placed in JCF on last day of the month	123	131	130	132	131	123	128	117	113	115	114	114		122.6

¹ Entry into JCF for reason of 90 psychological evaluation, administrative placement or custody of Kansas Dept. of Corrections

² Youth may be located outside a JCF related to transportation to and from court hearings, etc. This status is also referred to as an "out count".

Juvenile Correctional Facility Youth Characteristics

Month End Population Charateristics

Atchison	Jul-07	Aug-07	Sep-07	Oct-07	Nov-07	Dec-07	Jan-08	Feb-08	Mar-08	Apr-08	May-08	Jun-08
Average Months in JCF	9.2	9.9	9.5	9.7	9.4	10.0	9.5	8.9	7.9	8.4	7.7	8.4
Median Months In JCF	6.7	7.0	7.0	7.3	7.2	8.0	7.5	5.9	4.6	5.6	5.2	6.2
Average Age	15.3	15.4	15.4	15.5	15.7	15.8	15.6	15.6	15.4	15.4	15.4	15.5
Median Age	15.4	15.5	15.5	15.5	15.7	15.8	15.6	15.5	15.4	15.5	15.5	15.6

Beloit	Jul-07	Aug-07	Sep-07	Oct-07	Nov-07	Dec-07	Jan-08	Feb-08	Mar-08	Apr-08	May-08	Jun-08
Average Months in JCF	5.4	6.6	7.7	6.9	7.9	8.7	8.5	7.9	7.3	8.4	7.3	5.8
Median Months In JCF	3.2	4.3	5.2	6.1	6.1	6.2	7.0	6.7	5.4	6.5	4.2	3.5
Average Age	17.4	17.5	17.5	17.4	17.4	17.4	17.6	17.6	17.6	17.6	17.8	17.5
Median Age	17.6	17.5	17.5	17.2	17.1	17.1	17.2	17.3	17.4	17.5	17.6	17.6

KJCC	Jul-07	Aug-07	Sep-07	Oct-07	Nov-07	Dec-07	Jan-08	Feb-08	Mar-08	Apr-08	May-08	Jun-08
Average Days in RDU	34.4	43.9	51.4	64.7	79.4	66.7	37.5	7.1	10.8	5.7	10.9	12.1
Average Mos. for non RDU Youth	9.3	9.5	10.2	10.3	9.2	8.8	8.8	8.3	8.1	8.2	8.4	8.2
Average Months for all Youth	7.9	7.8	8.3	8.3	7.5	7.5	7.3	7.6	7.8	7.8	7.8	7.7
Median Months for Non RDU Youth	6.1	6.8	7.6	7.5	7.4	6.7	5.6	5.7	5.4	5.9	6.4	6.5
Median Months for all Youth	5.6	4.6	5.5	5.7	4.7	5	5.9	5.1	5.1	5.6	5.6	5.8
Average Age All Youth	17.9	17.9	17.9	17.9	17.8	17.8	17.7	17.7	17.7	17.8	17.8	17.8
Median Age All Youth	17.9	17.8	17.9	17.7	17.7	17.8	18	17.7	17.7	17.7	17.8	17.8

Larned	Jul-07	Aug-07	Sep-07	Oct-07	Nov-07	Dec-07	Jan-08	Feb-08	Mar-08	Apr-08	May-08	Jun-08
Average Months in JCF	8.1	8.0	7.8	8.1	8.4	8.3	8.3	8.3	8.5	8.3	8.8	8.9
Median Months In JCF	3.5	5.6	5.7	6.1	5.9	5.4	4.4	6.1	6.7	7.3	7.5	7.6
Average Age	18.1	18.0	18.0	18.1	18.1	18.0	18.0	18.0	18.0	18.0	18.0	18.1
Median Age	17.9	18.0	18.0	18.1	18.1	18.0	17.7	18.0	18.0	18.0	18.0	18.2

