

Statewide Month End Population: Placements for Youth in the Custody of JJA on the Last Day of Each Month

Youth are placed in JJA custody by the court and may be placed at home, with relatives, in a juvenile correctional facility or in another type of community placement. Data below is summary information for youth in JJA custody on the last day of a month with comparative data from previous years.

Placement Summary

State Fiscal Year 2009	Jul	Aug	Sep	Oct	Nov	Dec	Jan	Feb	Mar	Apr	May	Jun	FY09 Avg.	FY09 Plcmt Avg As % of Total
Juvenile Correctional Facility	384	384	358	348	320	328	330	336	351	343	348	354	348.7	21.1%
Detention	172	164	186	167	196	171	163	152	146	159	176	160	167.7	10.1%
Facility/Other ¹	90	83	87	104	100	96	95	104	102	108	94	102	97.1	5.9%
Foster Home	36	35	34	24	23	21	25	28	25	27	25	24	27.3	1.6%
Home/Relative	504	459	448	420	404	424	406	371	347	335	361	348	402.3	24.3%
Juvenile Justice Foster Care	n/a	n/a	n/a	9	10	10	10	12	14	15	11	9	11.1	0.7%
AWOL	101	102	104	94	111	121	115	107	110	92	94	85	103.0	6.2%
Psychiatric Residential Treatment Center	85	76	82	80	75	72	74	69	74	75	71	74	75.6	4.6%
Not Reported	1	46	29	26	30	34	34	43	6	11	21	24	25.4	1.5%
Youth Residential Center I	6	5	4	3	3	3	2	1	1	1	2	3	2.8	0.2%
Youth Residential Center II	366	353	373	409	412	393	400	405	403	424	385	398	393.4	23.8%
Total Custody Population	1,745	1,707	1,705	1,684	1,684	1,673	1,654	1,628	1,579	1,590	1,588	1,581	1654.3	100.0%
% Change from Previous Year	-6.53%	-8.37%	-10.31%	-11.55%	-11.42%	-11.81%	-12.90%	-14.14%	-15.02%	-13.77%	-11.92%	-11.28%	-11.59%	

¹ Includes Emergency Shelter, Maternity or Substance Abuse Residential Treatment, Hospital, Independent Living, Job Corp

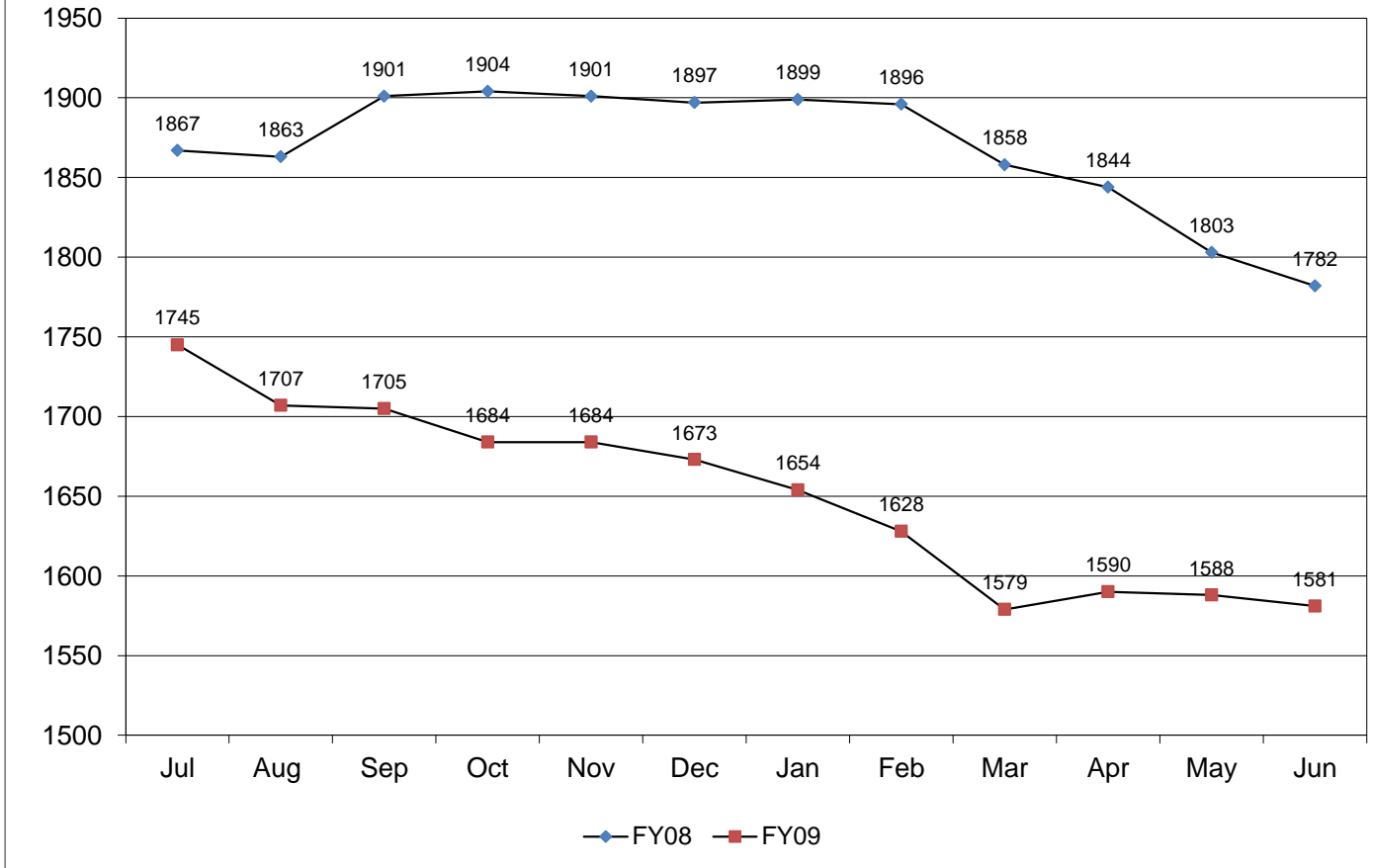
²The fiscal year average is calculated by summing the average of all placements

Fiscal Year Flashback	FY08 Mo. Avg
Juvenile Correctional Facility	401.4
Detention	178.2
Facility/Other*	88.8
Foster Home	41.7
Home/Relative	551.3
Juvenile Justice Foster Care	n/a
AWOL	109.8
Psychiatric Residential Treatment Center	111.2
Not Reported	1.2
Youth Residential Center I	5.8
Youth Residential Center II	378.8
Total Custody Population	1867.9

**Statewide Month End Population: Placements for Youth in the Custody of JJA on the Last Day of Each Month
Placement Detail**

Placements	Jul	Aug	Sep	Oct	Nov	Dec	Jan	Feb	Mar	Apr	May	Jun	Avg	Avg as a %
Community Integration Program	13	15	10	10	12	12	12	15	16	16	10	11	12.7	1%
Juvenile Justice Foster Care	12	12	11	9	10	10	10	12	14	15	11	9	11.3	1%
Detention	172	164	186	167	196	171	163	152	146	159	176	160	167.7	10%
Emergency Shelter	12	10	7	9	9	8	7	11	5	4	3	2	7.3	0%
Family Resource Home	2	2	2	2	2	0	0	0	1	1	2	2	1.3	0%
Home	496	450	437	412	394	416	398	366	340	327	352	336	393.7	24%
Hospital	5	3	1	5	4	3	5	5	6	5	4	3	4.1	0%
Independent Living	18	15	17	18	18	11	8	10	11	13	14	17	14.2	1%
Juvenile Correctional Facility	384	384	358	348	320	328	330	336	351	343	348	354	348.7	21%
Kinship/Non-Related Kin Care	0	0	1	2	0	0	2	3	1	1	1	3	1.2	0%
Not Reported	1	46	29	26	30	34	34	43	6	11	21	24	25.4	2%
Psychiatric Residential Treatment Facility	85	76	82	80	75	72	74	69	74	75	71	74	75.6	5%
Residential Drug/Alcohol Treatment	4	4	11	7	5	5	5	6	3	4	1	7	5.2	0%
Relative Placement	8	9	6	8	10	8	8	5	7	8	9	12	8.2	0%
Residential Maternity Group Home	4	3	3	3	2	1	2	2	2	2	4	3	2.6	0%
Runaway/ AWOL	101	102	104	94	111	121	115	107	110	92	94	85	103.0	6%
Sanction House	3	0	0	1	0	0	1	2	0	1	1	1	0.8	0%
Specialized Family Resource Home	17	15	13	14	15	15	16	16	15	17	14	11	14.8	1%
Therapeutic Foster Care	5	6	7	6	6	6	7	9	8	8	8	8	7.0	0%
Transitional Living Program	31	33	43	51	50	56	55	53	59	63	57	58	50.8	3%
Youth Residential Center I	6	5	4	3	3	3	2	1	1	1	2	3	2.8	0%
Youth Residential Center II	366	353	373	409	412	393	400	405	403	424	385	398	393.4	24%
Total	1,745	1,707	1,705	1,684	1,684	1,673	1,654	1,628	1,579	1,590	1,588	1,581	1,652	100%

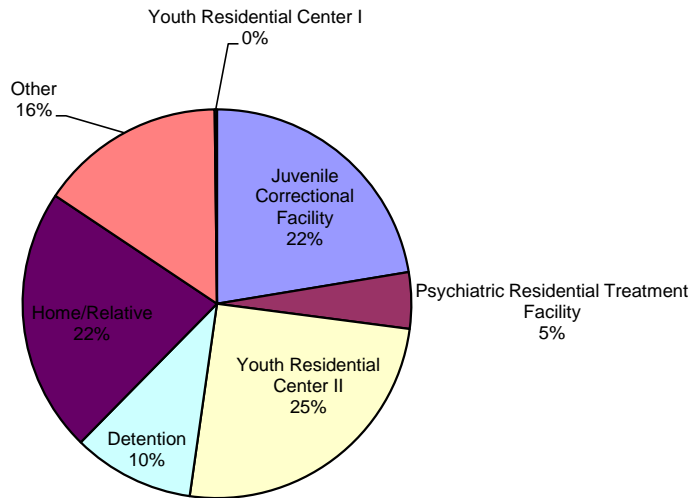
Statewide JJA Custody Month End Population



Statewide Month End Population: Placements for Youth in the Custody of JJA on June 30, 2009 by Judicial District

	Judicial District																															Tot	%
	1	2	3	4	5	6	7	8	9	10	11	12	13	14	16	15/17/23	18	19	20	21	22	24	25	26	27	28	29	30	31				
Juvenile Correctional Facility	9	7	29	9	4	7	9	14	6	22	4	3	9	7	2	3	77	6	10	2	4	1	20	5	4	9	62	2	8	354	22.39%		
Detention	5	0	17	2	2	1	3	4	1	12	4	1	2	6	4	0	46	1	3	0	1	0	5	5	0	7	25	1	2	160	10.12%		
Facility/Other	3	0	4	1	3	3	3	1	1	9	2	0	3	1	0	2	32	1	5	1	2	1	6	0	1	3	8	2	4	102	6.45%		
Foster Home	0	0	2	2	0	1	0	0	0	3	2	0	0	2	1	2	2	0	1	0	0	0	1	0	1	0	1	0	3	24	1.52%		
Home/Relative	13	3	21	2	5	0	1	9	3	23	3	1	15	10	7	6	91	12	4	0	8	0	20	19	3	8	50	5	6	348	22.01%		
Juvenile Justice Foster Care	0	0	0	0	0	0	0	0	0	0	0	0	0	0	0	3	0	0	0	0	0	0	3	3	0	0	0	0	0	9	0.57%		
AWOL	6	0	1	1	2	1	1	0	1	3	0	0	0	0	0	0	38	1	2	0	0	0	3	2	0	1	22	0	0	85	5.38%		
Psychiatric Residential Treatment Facility	2	0	2	3	0	2	3	10	1	11	3	1	1	4	2	5	1	2	4	1	1	1	2	0	4	2	5	1	0	74	4.68%		
Youth Residential Center I	0	0	0	0	0	0	0	0	0	0	0	0	0	0	0	0	1	0	0	0	0	0	1	1	0	0	0	0	0	3	0.19%		
Youth Residential Center II	7	7	26	6	14	7	10	13	4	25	11	1	9	7	10	13	117	13	21	2	2	1	8	6	11	6	34	2	5	398	25.17%		
Not Reported	1	1	0	0	0	0	0	2	0	1	0	0	1	0	0	1	13	0	0	0	0	0	1	1	0	0	0	1	1	24	1.52%		
Total	46	18	102	26	30	22	30	53	17	109	29	7	40	37	26	35	418	36	50	6	18	4	70	42	24	36	207	14	29	1581	100.0%		

Month End Placement Distribution

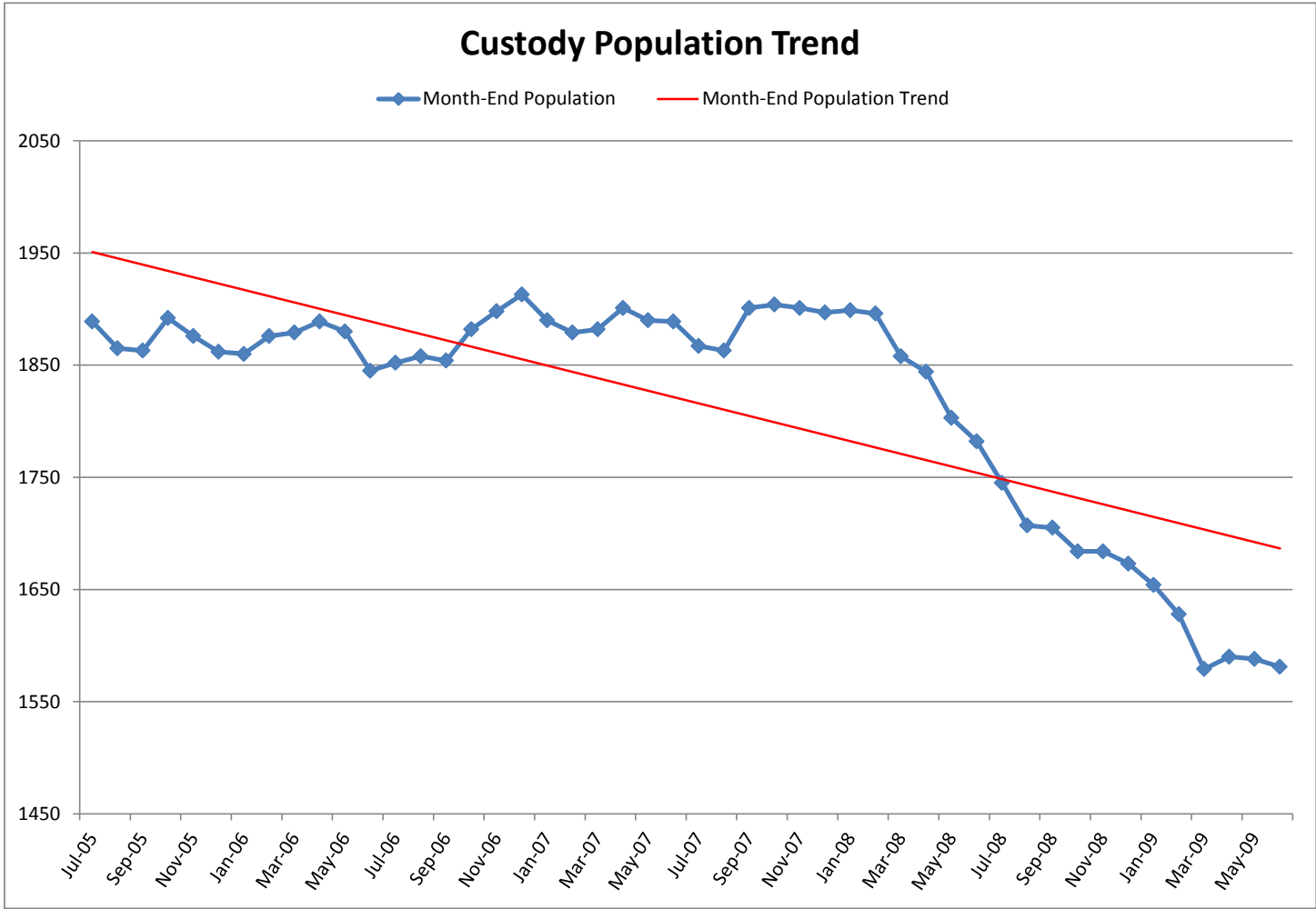


Length of Stay for Youth whose Placement Type Ended During the FY2009 Month

		Jul	Aug	Sep	Oct	Nov	Dec	Jan	Feb	Mar	Apr	May	Jun	Avg.
PRTF	# placements	22	27	15	22	21	21	26	17	23	14	26	13	21
	Average # days	146.5	115.5	126.7	117.9	125.9	107.6	121.4	90.8	86.9	129.6	143.4	94.1	117.2
	Median # days	139.5	85.0	86.0	85.5	108.0	88.0	86.0	84.0	76.0	88.5	97.0	84.0	86.0
YRCI	# placements	4	1	1	2	3	1	1	1	0	0	1	1	1
	Average # days	55.3	70.0	114.0	48.5	102.3	31.0	0.0	78.0	0.0	0.0	178.0	33.0	59.2
	Median # days	55.5	70.0	114.0	48.5	108.0	31.0	0.0	78.0	0.0	0.0	178.0	33.0	52.0
YRCII	# placements	124	106	127	96	120	140	121	95	125	98	156	115	119
	Average # days	95.6	97.1	84.5	90.5	79.9	91.0	77.8	86.8	86.8	90.6	107.8	102.1	90.9
	Median # days	89.0	87.0	71.0	86.5	52.5	87.5	77.0	87.0	80.0	89.0	96.0	89.0	87.0

Length of Stay for Youth in Respective Placement Type on the Last Day of the Month during FY2009

		Jul	Aug	Sep	Oct	Nov	Dec	Jan	Feb	Mar	Apr	May	Jun	Avg.
PRTF	# youth	86	76	82	80	75	72	74	69	74	76	71	74	76
	Average # days	103.2	99.9	96.4	98.8	99.7	106.2	88.1	94.9	92.6	94.7	82.1	87.3	95.3
	Median # days	64.0	62.5	66.5	78.5	80.0	81.5	60.0	65.0	70.5	58.0	60.0	62.5	64.5
YRCI	# youth	6	5	4	3	3	3	2	1	1	1	2	3	3
	Average # days	39.7	63.4	63.3	94.7	12.0	34.0	66.0	94.0	127.0	156.0	8.0	26.7	65.4
	Median # days	43.0	67.0	65.5	100.0	6.0	35.0	66.0	94.0	127.0	156.0	8.0	34.0	65.8
YRCII	# youth	369	353	373	409	412	393	400	405	403	427	385	398	394
	Average # days	80.8	80.8	75.1	74.5	79.2	80.2	81.1	86.2	91.7	93.5	93.0	87.1	83.6
	Median # days	60.0	59.0	56.0	50.0	61.0	62.0	58.5	58.0	68.0	71.0	66.0	56.0	59.5



AWOL Population Month-End Trend

