

Fiscal Year 2009

data as of 7/15/2009

Juvenile Correctional Facility Population Activity

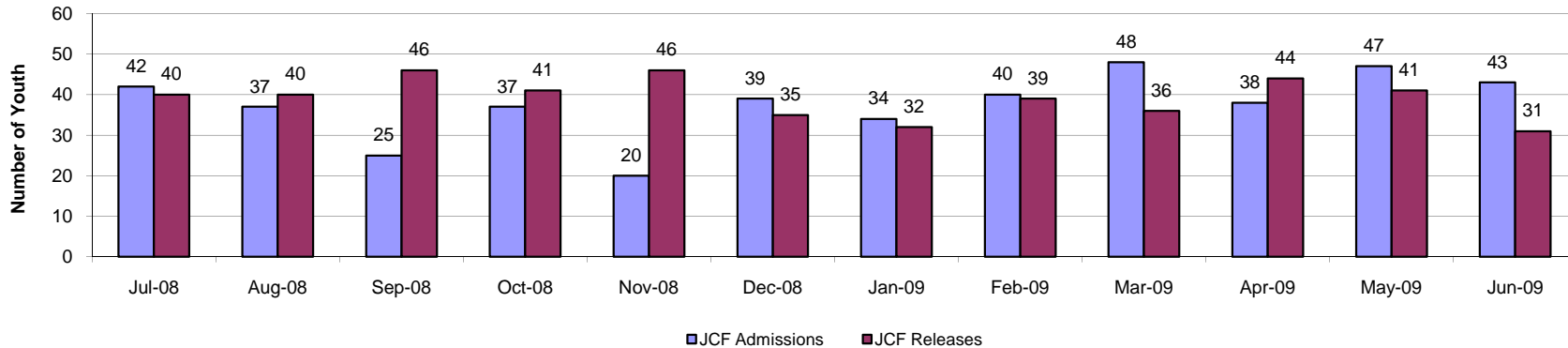
Youth in JJA custody may be placed in a setting outside their home such as relative, foster home, group home, or Juvenile Correctional Facility (JCF). Youth placed in a JCF are committed to a JCF by court order pursuant to K.S.A. 38-16,129. Information in this report includes census information on youth admitted to a JCF during FY2009.



There were 28% more releases than admissions during the month of June. The statewide month end population for June 2009 (365) is 6% less than the month end population of June 2008 (387).

Statewide JCF Activity Summary	Jul-08	Aug-08	Sep-08	Oct-08	Nov-08	Dec-08	Jan-09	Feb-09	Mar-09	Apr-09	May-09	Jun-09	Total	FY09 Avg.
JCF Admissions	42	37	25	37	20	39	34	40	48	38	47	43	450	37.5
JCF Releases	40	40	46	41	46	35	32	39	36	44	41	31	471	39.3
Month End Population	386	383	364	360	334	338	340	341	353	347	353	365	N/A	355.3

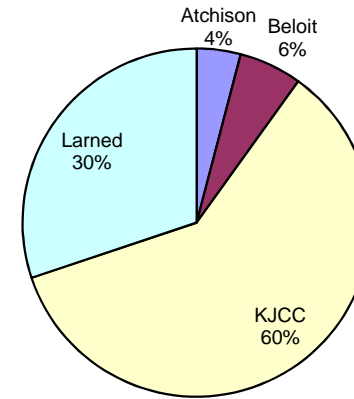
Statewide JCF Admissions and Releases FY09



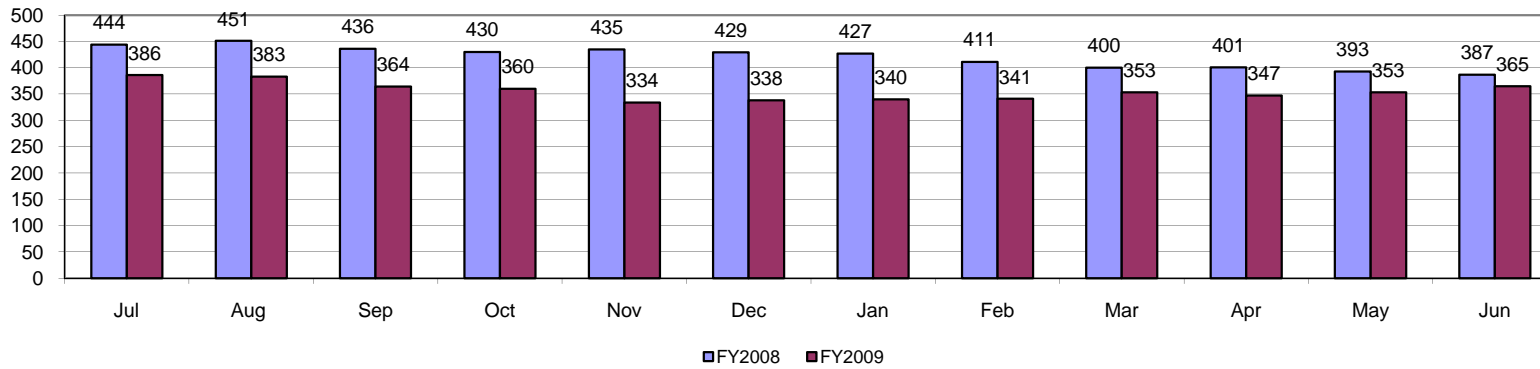
Statewide JCF Month End Population

The average month end population for FY09 (355) is 16% lower than the average month end population during FY08 (421).

**Fiscal Year 2009 Average:
Youth JCF Placement Distribution**



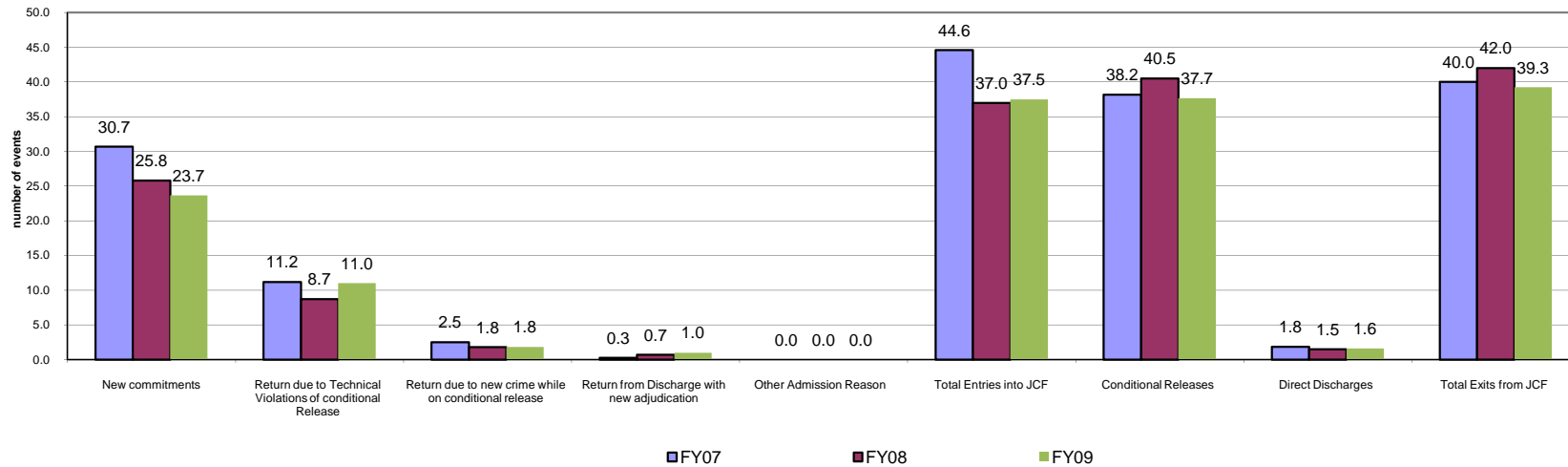
Statewide Juvenile Correctional Facility Month End Population



Fiscal Year Flashback
Census Events: Average Monthly Frequency

	FY06	FY07	FY08	FY09
New commitments	26.4	30.7	25.8	23.7
Return due to Technical Violations of conditional Release	12.5	11.2	8.7	11.0
Return due to new crime while on conditional release	1.4	2.5	1.8	1.8
Return from Discharge with new adjudication	0.4	0.3	0.7	1.0
Other Admission Reason	0.0	0.0	0.0	0.0
Total Entries into JCF	40.8	44.6	37.0	37.5
Conditional Releases	47.4	38.2	40.5	37.7
Direct Discharges	1.1	1.8	1.5	1.6
Total Exits from JCF	48.5	40.0	42.0	39.3

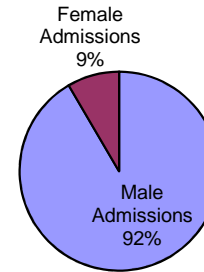
Statewide Avg. JCF Census # Events Across Years



Statewide JCF Characteristics

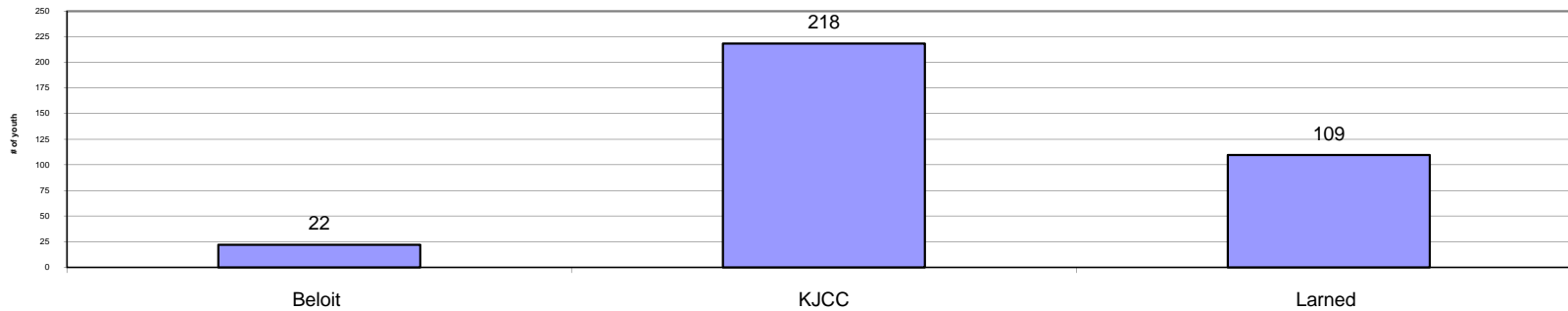
Kansas operates three Juvenile Correctional Facilities. All males entering a Juvenile Correctional Facility are admitted through the Reception and Diagnostic Unit (RDU) at the Kansas Juvenile Correctional Complex (KJCC). Upon completion of a classification assessment at the RDU, males serve out their sentence at either the KJCC location in Topeka or Larned JCF. Beloit JCF is the only facility that receives female admissions and is the RDU for females.

FY2009 JCF Admission by Gender



	Beloit	KJCC	Larned	All JCF
FY 09 Average Daily Population	21.8	218.4	109.4	358.5

FY2009 Average Daily Population



JCF Detail: Statewide

Youth Entering All JCF	Jul-08	Aug-08	Sep-08	Oct-08	Nov-08	Dec-08	Jan-09	Feb-09	Mar-09	Apr-09	May-09	Jun-09	Tot	Mo.avg
New Commitments	26	21	15	19	11	26	23	24	31	25	31	32	284	23.7
Return due to Technical Violations of Conditional Release	15	12	8	12	7	10	9	15	14	10	12	8	132	11.0
Return due to New Crime while on Conditional Release	1	4	0	5	2	3	2	0	2	0	2	1	22	1.8
Return from Discharge with New Adjudication	0	0	2	1	0	0	0	1	1	3	2	2	12	1.0
Other Admission Reason ¹	0	0	0	0	0	0	0	0	0	0	0	0	0	0.0
Total Entries into JCF	42	37	25	37	20	39	34	40	48	38	47	43	450	37.5
Youth Exiting Facility	Jul-08	Aug-08	Sep-08	Oct-08	Nov-08	Dec-08	Jan-09	Feb-09	Mar-09	Apr-09	May-09	Jun-09	Tot	Mo.avg
Conditional Releases	39	38	46	39	46	35	31	35	35	42	37	29	452	37.7
Direct Discharges	1	2	0	2	0	0	1	4	1	2	4	2	19	1.6
Total Exits from Facility	40	40	46	41	46	35	32	39	36	44	41	31	471	39.3
Month End Population	Jul-08	Aug-08	Sep-08	Oct-08	Nov-08	Dec-08	Jan-09	Feb-09	Mar-09	Apr-09	May-09	Jun-09	Tot	Mo.avg
Youth placed in JCF who are temporarily not located at facility ²	4	4	4	6	3	0	1	0	2	1	0	1		2.2
Total # Youth placed in JCF on last day of the month	386	383	364	360	334	338	340	341	353	347	353	365		355.3

¹ Entry into JCF for reason of 90 psychological evaluation, administrative placement or custody of Kansas Dept. of Corrections

² Youth may be located outside a JCF related to transportation to and from court hearings, etc. This status is also referred to as an "out count".

JCF Detail: Atchison Juvenile Correctional Facility

Youth Entering Atchison Facility	Jul-08	Aug-08	Sep-08	Oct-08	Nov-08	Dec-08	Jan-09	Feb-09	Mar-09	Apr-09	May-09	Jun-09	Tot	Mo.avg
New Commitments	0	0	0	0	0	0							0	0.0
Return due to Technical Violations of Conditional Release	0	0	0	0	0	0							0	0.0
Return due to New Crime while on Conditional Release	0	0	0	0	0	0							0	0.0
Return from Discharge with New Adjudication	0	0	0	0	0	0							0	0.0
Other Admission Reason ¹	0	0	0	0	0	0							0	0.0
Transferring In from another JCF	5	1	1	0	0	0							7	1.2
Total Entries into JCF	5	1	1	0	0	0							7	1.2
Youth Exiting Facility	Jul-08	Aug-08	Sep-08	Oct-08	Nov-08	Dec-08	Jan-09	Feb-09	Mar-09	Apr-09	May-09	Jun-09	Tot	Mo.avg
Transferred out to another JCF	11	2	9	5	11	0							38	6.3
Conditional Releases	2	0	2	2	0	0							6	1.0
Direct Discharges	0	0	0	1	0	0							1	0.2
Total Exits from Facility	13	2	11	8	11	0							45	7.5
Month End Population	Jul-08	Aug-08	Sep-08	Oct-08	Nov-08	Dec-08	Jan-09	Feb-09	Mar-09	Apr-09	May-09	Jun-09	Tot	Mo.avg
Youth placed in JCF who are temporarily not located at facility ²	0	0	0	0	0	0								0.0
Total # Youth placed in JCF on last day of the month	30	29	19	11	0	0								14.8

*Atchison Juvenile Correctional Facility ceased operations effective 12/8/2008.

JCF Detail: Beloit Juvenile Correctional Facility

Youth Entering Beloit Facility	Jul-08	Aug-08	Sep-08	Oct-08	Nov-08	Dec-08	Jan-09	Feb-09	Mar-09	Apr-09	May-09	Jun-09	Tot	Mo.avg
New Commitments	1	2	1	3	0	0	1	4	3	0	5	2	22	1.8
Return due to Technical Violations of Conditional Release	1	2	0	0	1	2	2	1	1	0	2	1	13	1.1
Return due to New Crime while on Conditional Release	0	1	0	0	0	0	0	0	1	0	0	0	2	0.2
Return from Discharge with New Adjudication	0	0	0	0	0	0	0	0	0	0	1	0	1	0.1
Other Admission Reason ¹	0	0	0	0	0	0	0	0	0	0	0	0	0	0.0
Transferring In from another JCF (N/A)	0	0	0	0	0	0	0	0	0	0	0	0	0	0.0
Total Entries into JCF	2	5	1	3	1	2	3	5	5	0	8	3	38	3.2
Youth Exiting Facility	Jul-08	Aug-08	Sep-08	Oct-08	Nov-08	Dec-08	Jan-09	Feb-09	Mar-09	Apr-09	May-09	Jun-09	Tot	Mo.avg
Transferred out to another JCF (N/A)	0	0	0	0	0	0	0	0	0	0	0	0	0	N/A
Conditional Releases	6	5	2	1	6	4	3	2	4	4	3	2	42	3.5
Direct Discharges	0	0	0	0	0	0	0	0	0	2	0	0	2	0.2
Total Exits from Facility	6	5	2	1	6	4	3	2	4	6	3	2	44	3.7
Month End Population	Jul-08	Aug-08	Sep-08	Oct-08	Nov-08	Dec-08	Jan-09	Feb-09	Mar-09	Apr-09	May-09	Jun-09	Tot	Mo.avg
Youth placed in JCF who are temporarily not located at facility ²	0	0	0	0	0	0	0	0	0	0	0	1		0.1
Total # Youth placed in JCF on last day of the month	24	24	23	25	20	18	18	21	22	16	21	22		21.2

¹ Entry into JCF for reason of 90 psychological evaluation, administrative placement or custody of Kansas Dept. of Corrections

² Youth may be located outside a JCF related to transportation to and from court hearings, etc. This status is also referred to as an "out count".

JCF Detail: Kansas Juvenile Correctional Complex

Youth Entering KJCC Facility	Jul-08	Aug-08	Sep-08	Oct-08	Nov-08	Dec-08	Jan-09	Feb-09	Mar-09	Apr-09	May-09	Jun-09	Tot	Mo.avg
New Commitments	25	19	14	16	11	26	22	20	28	25	26	30	262	21.8
Return due to Technical Violations of Conditional Release	14	10	8	12	6	8	7	14	13	10	10	7	119	9.9
Return due to New Crime while on Conditional Release	1	3	0	5	2	3	2	0	1	0	2	1	20	1.7
Return from Discharge with New Adjudication	0	0	2	1	0	0	0	1	1	3	1	2	11	0.9
Other Admission Reason ¹	0	0	0	0	0	0	0	0	0	0	0	0	0	0.0
Transferring In from another JCF	8	3	10	3	9	2	2	0	1	0	0	0	38	3.2
Total Entries into JCF	48	35	34	37	28	39	33	35	44	38	39	40	450	37.5
Youth Exiting Facility	Jul-08	Aug-08	Sep-08	Oct-08	Nov-08	Dec-08	Jan-09	Feb-09	Mar-09	Apr-09	May-09	Jun-09	Tot	Mo.avg
Transferred out to another JCF	15	9	11	10	8	6	11	8	13	9	6	8	114	9.5
Conditional Releases	23	20	27	26	32	25	20	27	19	32	26	14	291	24.3
Direct Discharges	1	2	0	1	0	0	1	2	1	0	4	2	14	1.2
Total Exits from Facility	39	31	38	37	40	31	32	37	33	41	36	24	419	34.9
Month End Population	Jul-08	Aug-08	Sep-08	Oct-08	Nov-08	Dec-08	Jan-09	Feb-09	Mar-09	Apr-09	May-09	Jun-09	Tot	Mo.avg
Youth placed in JCF who are temporarily not located at facility ²	3	3	4	6	2	0	1	0	2	0	0	0		1.8
Total # Youth placed in JCF on last day of the month	216	220	216	216	204	212	213	211	222	219	222	238		217.4

¹ Entry into JCF for reason of 90 psychological evaluation, administrative placement or custody of Kansas Dept. of Corrections

² Youth may be located outside a JCF related to transportation to and from court hearings, etc. This status is also referred to as an "out count".

JCF Detail: Larned Juvenile Correctional Facility

Youth Entering Larned Facility	Jul-08	Aug-08	Sep-08	Oct-08	Nov-08	Dec-08	Jan-09	Feb-09	Mar-09	Apr-09	May-09	Jun-09	Tot	Mo.avg
New Commitments	0	0	0	0	0	0	0	0	0	0	0	0	0	0.0
Return due to Technical Violations of Conditional Release	0	0	0	0	0	0	0	0	0	0	0	0	0	0.0
Return due to New Crime while on Conditional Release	0	0	0	0	0	0	0	0	0	0	0	0	0	0.0
Return from Discharge with New Adjudication	0	0	0	0	0	0	0	0	0	0	0	0	0	0.0
Other Admission Reason ¹	0	0	0	0	0	0	0	0	0	0	0	0	0	0.0
Transferring In from another JCF	13	10	13	14	11	6	11	8	13	9	6	8	122	10.2
Total Entries into JCF	13	10	13	14	11	6	11	8	13	9	6	8	122	10.2
Youth Exiting Facility	Jul-08	Aug-08	Sep-08	Oct-08	Nov-08	Dec-08	Jan-09	Feb-09	Mar-09	Apr-09	May-09	Jun-09	Tot	Mo.avg
Transferred out to another JCF	0	3	2	2	1	2	2	0	1	0	0	0	13	1.1
Conditional Releases	8	13	15	10	8	6	8	6	12	6	8	13	113	9.4
Direct Discharges	0	0	0	0	0	0	0	2	0	0	0	0	2	0.2
Total Exits from Facility	8	16	17	12	9	8	10	8	13	6	8	13	128	10.7
Month End Population	Jul-08	Aug-08	Sep-08	Oct-08	Nov-08	Dec-08	Jan-09	Feb-09	Mar-09	Apr-09	May-09	Jun-09	Tot	Mo.avg
Youth placed in JCF who are temporarily not located at facility ²	1	1	0	0	1	0	0	0	0	1	0	0		0.3
Total # Youth placed in JCF on last day of the month	116	110	106	108	110	108	109	109	109	112	110	105		109.3

¹ Entry into JCF for reason of 90 psychological evaluation, administrative placement or custody of Kansas Dept. of Corrections

² Youth may be located outside a JCF related to transportation to and from court hearings, etc. This status is also referred to as an "out count".

Juvenile Correctional Facility Youth Characteristics

Month End Population Characteristics

Atchison	Jul-08	Aug-08	Sep-08	Oct-08	Nov-08	Dec-08	Jan-09	Feb-09	Mar-09	Apr-09	May-09	Jun-09
Average Months in JCF	8.6	9.4	12.4	11.8	n/a	n/a						
Median Months In JCF	6.6	7.6	11.1	12.2	n/a	n/a						
Average Age	15.7	15.7	15.9	16.1	n/a	n/a						
Median Age	15.7	15.8	16.2	16.3	n/a	n/a						

Beloit	Jul-08	Aug-08	Sep-08	Oct-08	Nov-08	Dec-08	Jan-09	Feb-09	Mar-09	Apr-09	May-09	Jun-09
Average Months in JCF	6.1	5.5	6.5	6.7	7.5	8.2	7.9	6.5	6.3	8.0	5.6	5.2
Median Months In JCF	4.2	3.6	4.6	4.8	6.7	7.3	6.3	3.9	2.3	3.2	2.9	2.7
Average Age	17.4	17.6	17.8	17.7	18.0	17.7	17.9	18.0	17.5	17.8	17.8	17.6
Median Age	17.3	17.7	17.8	17.8	18.0	18.0	18.0	17.9	18.0	17.9	17.7	17.0

KJCC	Jul-08	Aug-08	Sep-08	Oct-08	Nov-08	Dec-08	Jan-09	Feb-09	Mar-09	Apr-09	May-09	Jun-09
Average Months for all Youth	7.4	7.3	7.5	7.8	8.1	7.6	7.9	8.0	7.9	7.6	7.7	7.5
Median Months for all Youth	5.9	5.2	5.3	5.8	5.7	5.0	4.8	5.0	4.9	4.8	4.8	4.6
Average Age All Youth	17.7	17.7	17.6	17.7	17.7	17.7	17.7	17.7	17.2	17.7	17.7	17.4
Median Age All Youth	17.7	17.7	17.8	17.8	17.8	17.8	17.9	17.9	17.8	17.8	17.7	17.0

Larned	Jul-08	Aug-08	Sep-08	Oct-08	Nov-08	Dec-08	Jan-09	Feb-09	Mar-09	Apr-09	May-09	Jun-09
Average Months in JCF	9.0	9.1	8.1	7.5	7.3	7.5	7.5	7.3	7.2	7.5	8.1	8.1
Median Months In JCF	7.5	7.5	5.8	4.9	5.2	5.3	5.7	6.1	6.0	6.3	7.3	7.9
Average Age	18.1	18.0	17.8	17.6	17.6	17.6	17.5	17.4	17.0	17.5	17.6	17.2
Median Age	18.2	18.1	18.0	17.8	17.8	17.8	17.9	17.4	17.6	17.7	17.7	17.0

JCF Population Trend

Month-End Population Month-End Population Trend

