

## Statewide Month End Population: Placements for Youth in the Custody of JJA on the Last Day of Each Month

Youth are placed in JJA custody by the court and may be placed at home, with relatives, in a juvenile correctional facility or in another type of community placement. Data below is summary information for youth in JJA custody on the last day of a month with comparative data from previous years.

### Placement Summary

State Fiscal Year 2010	Jul	Aug	Sep	Oct	Nov	Dec	Jan	Feb	Mar	Apr	May	Jun	FY10 Avg.	FY10 Plcmt Avg As % of Total
Juvenile Correctional Facility	339	332	330	331	332	332	320	325	321	316	314	326	326.5	21.0%
Detention	171	164	164	153	143	145	152	142	162	160	176	156	157.3	10.1%
Facility/Other <sup>1</sup>	107	102	92	90	89	112	105	108	106	101	98	98	100.7	6.5%
Foster Home	24	23	21	19	18	20	20	18	18	19	20	22	20.2	1.3%
Home/Relative	386	367	351	347	346	351	342	339	337	337	332	321	346.3	22.3%
Juvenile Justice Foster Care	10	15	17	17	21	23	31	30	40	40	38	30	26.0	1.7%
AWOL	91	83	73	72	70	87	79	83	75	90	96	107	83.8	5.4%
Psychiatric Residential Treatment Center	81	68	68	80	79	86	76	83	80	78	72	67	76.5	4.9%
Not Reported	6	7	6	8	7	9	11	10	9	13	26	31	11.9	0.8%
Youth Residential Center I	3	1	2	2	2	1	1	2	1	2	2	3	1.8	0.1%
Youth Residential Center II	384	381	404	426	451	390	409	408	410	404	382	382	402.6	25.9%
<b>Total Custody Population</b>	<b>1,602</b>	<b>1,543</b>	<b>1,528</b>	<b>1,545</b>	<b>1,558</b>	<b>1,556</b>	<b>1,546</b>	<b>1,548</b>	<b>1,559</b>	<b>1,560</b>	<b>1,556</b>	<b>1,543</b>	<b>1553.7</b>	<b>100.0%</b>
<b>% Change from Previous Year</b>	<b>-8.19%</b>	<b>-9.61%</b>	<b>-10.38%</b>	<b>-8.25%</b>	<b>-7.48%</b>	<b>-6.99%</b>	<b>-6.53%</b>	<b>-4.91%</b>	<b>-1.27%</b>	<b>-1.89%</b>	<b>-2.02%</b>	<b>-2.40%</b>	<b>-5.83%</b>	

<sup>1</sup> Includes Emergency Shelter, Maternity or Substance Abuse Residential Treatment, Hospital, Independent Living

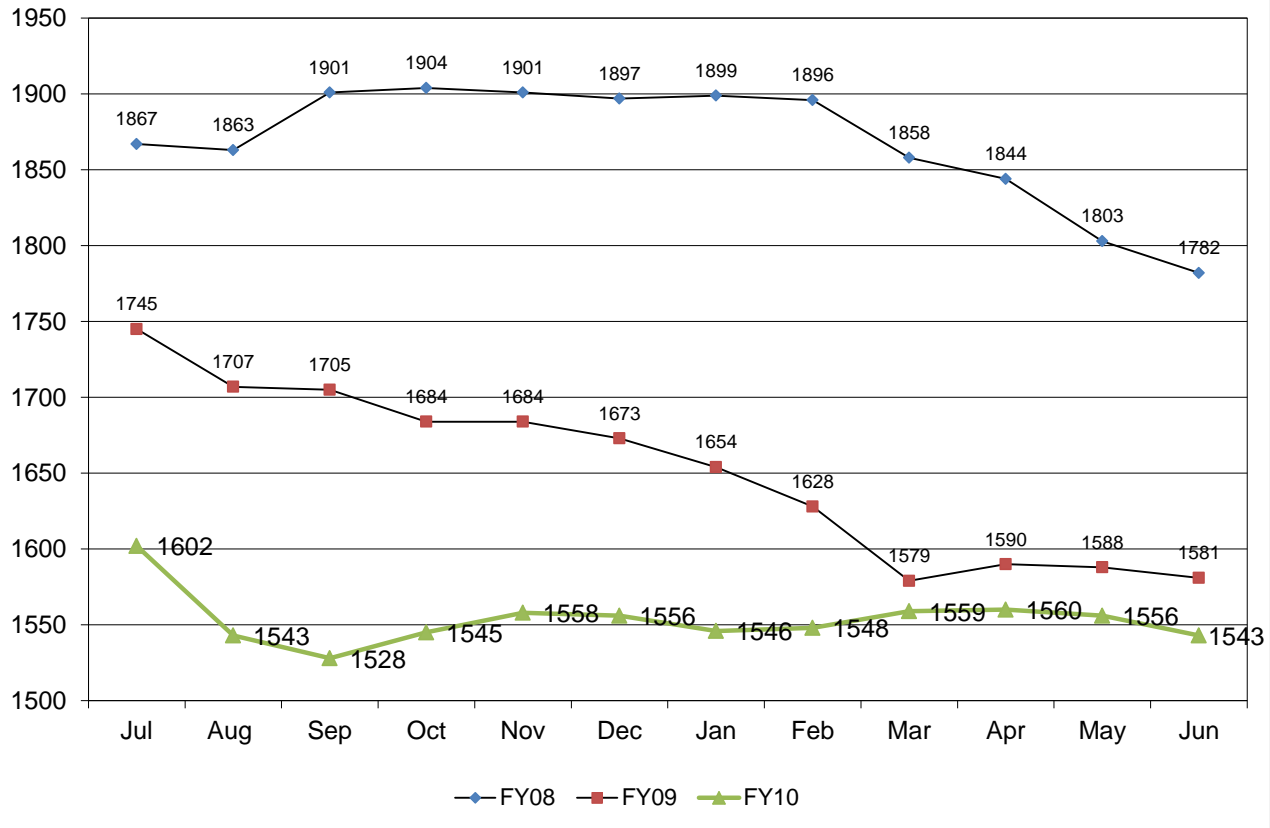
<sup>2</sup>The fiscal year average is calculated by summing the average of all placements

Fiscal Year Flashback	FY08 Mo. Avg	FY09 Mo. Avg
Juvenile Correctional Facility	401.4	348.7
Detention	178.2	167.7
Facility/Other*	88.8	97.1
Foster Home	41.7	27.3
Home/Relative	551.3	402.3
Juvenile Justice Foster Care	n/a	11.1
AWOL	109.8	103.0
Psychiatric Residential Treatment Center	111.2	75.6
Not Reported	1.2	25.4
Youth Residential Center I	5.8	2.8
Youth Residential Center II	378.8	393.4
<b>Total Custody Population</b>	<b>1867.9</b>	<b>1654.3</b>

**Statewide Month End Population: Placements for Youth in the Custody of JJA on the Last Day of Each Month  
Placement Detail**

Placements	Jul	Aug	Sep	Oct	Nov	Dec	Jan	Feb	Mar	Apr	May	Jun	Avg	Avg as a %
Community Integration Program	12	12	10	10	10	10	10	6	6	6	8	7	8.9	1%
Juvenile Justice Foster Care	10	15	17	17	21	23	31	30	40	40	38	30	26.0	2%
Detention	171	164	164	153	143	145	152	142	162	160	176	156	157.3	10%
Emergency Shelter	10	3	7	7	3	6	6	4	9	7	6	0	5.7	0%
Family Resource Home	2	1	1	1	1	0	1	1	1	1	2	2	1.2	0%
Home	372	355	339	337	338	344	337	333	328	330	327	310	337.5	22%
Hospital	4	3	4	2	4	4	3	2	1	3	4	1	2.9	0%
Independent Living	7	5	4	4	4	0	0	0	0	0	0	0	2.0	0%
Juvenile Correctional Facility	339	332	330	331	332	332	320	325	321	316	314	326	326.5	21%
Kinship/Non-Related Kin Care	2	2	2	1	1	1	2	2	0	0	1	1	1.3	0%
Not Reported	6	7	6	8	7	9	11	10	9	13	26	31	11.9	1%
Psychiatric Residential Treatment Facility	81	68	68	80	79	86	76	83	80	78	72	67	76.5	5%
Residential Drug/Alcohol Treatment	5	6	0	5	5	10	5	6	3	5	5	11	5.5	0%
Relative Placement	14	12	12	10	8	7	5	6	9	7	5	4	8.3	1%
Residential Maternity Group Home	4	5	3	6	10	8	6	7	7	6	4	4	5.8	0%
Runaway/ AWOL	91	83	73	72	70	87	79	83	75	90	96	107	83.8	5%
Sanction House	1	3	1	2	1	2	2	4	3	3	3	4	2.4	0%
Specialized Family Resource Home	12	11	10	10	10	10	9	8	8	8	7	9	9.3	1%
Therapeutic Foster Care	8	9	8	7	6	9	8	7	9	10	10	10	8.4	1%
Transitional Living Program	64	65	63	54	52	72	73	79	77	71	68	78	68.0	4%
Youth Residential Center I	3	1	2	2	2	1	1	2	1	2	2	3	1.8	0%
Youth Residential Center II	384	381	404	426	451	390	409	408	410	404	382	382	402.6	26%
<b>Total</b>	<b>1,602</b>	<b>1,543</b>	<b>1,528</b>	<b>1,545</b>	<b>1,558</b>	<b>1,556</b>	<b>1,546</b>	<b>1,548</b>	<b>1,559</b>	<b>1,560</b>	<b>1,556</b>	<b>1,543</b>	<b>1,554</b>	<b>100%</b>

### Statewide JJA Custody Month End Population

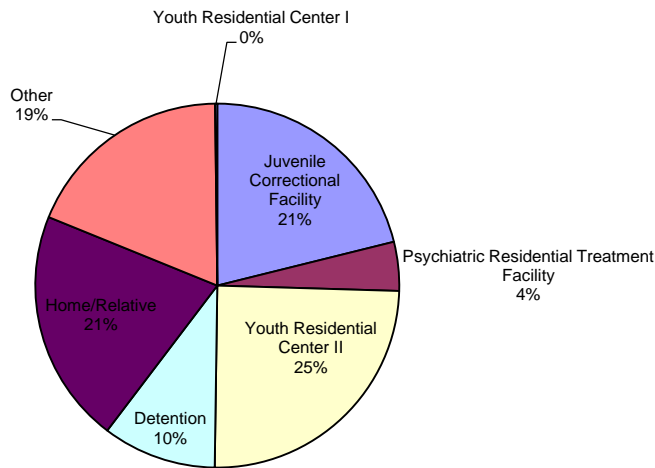


**Statewide Month End Population: Placements for Youth in the Custody of JJA on June 30, 2010 by Judicial District**

**Judicial District**

	1	2	3	4	5	6	7	8	9	10	11	12	13	14	16	15/17/23	18	19	20	21	22	24	25	26	27	28	29	30	31	Tot	%	
Juvenile Correctional Facility																															<b>326</b>	<b>21.13%</b>
Detention	9	7	26	4	4	6	3	14	6	22	6	2	8	10	6	2	71	13	7	4	4	1	15	4	2	8	54	3	5			
Facility/Other	2	1	11	2	2	1	4	0	2	16	2	0	3	7	3	3	41	2	2	2	2	0	6	4	3	1	31	1	2	<b>156</b>	<b>10.11%</b>	
Foster Home	5	0	1	1	0	4	1	2	1	7	1	0	7	0	0	4	22	1	6	2	1	1	4	1	2	1	17	2	4	<b>98</b>	<b>6.35%</b>	
Home/Relative	0	0	1	0	0	0	2	0	0	4	3	0	1	0	0	4	3	0	0	0	0	0	2	1	0	0	1	0	0	<b>22</b>	<b>1.43%</b>	
Juvenile Justice Foster Care	10	7	13	4	2	1	1	12	1	20	6	0	13	10	9	4	94	7	5	0	4	0	15	14	4	4	54	1	6	<b>321</b>	<b>20.80%</b>	
AWOL	0	0	4	1	0	0	0	0	0	1	0	0	0	0	1	7	0	0	3	0	0	0	4	4	1	0	4	0	0	<b>30</b>	<b>1.94%</b>	
Psychiatric Residential Treatment Facility	1	0	2	1	2	0	1	0	0	1	2	0	2	1	1	0	52	2	7	0	0	0	4	3	0	1	23	0	1	<b>107</b>	<b>6.93%</b>	
Youth Residential Center I	0	1	3	4	2	0	2	5	1	10	3	2	4	4	0	7	2	1	0	1	2	1	2	0	2	3	3	1	1	<b>67</b>	<b>4.34%</b>	
Youth Residential Center II	0	0	0	0	0	0	0	0	0	0	0	0	0	0	0	0	0	0	0	0	0	0	2	1	0	0	0	0	0	<b>3</b>	<b>0.19%</b>	
Not Reported	6	2	36	0	13	7	4	8	6	23	17	2	3	9	16	10	92	5	15	1	4	1	15	9	15	17	36	2	8	<b>382</b>	<b>24.76%</b>	
Total	0	2	1	0	0	0	1	0	0	4	0	0	2	1	1	0	11	1	3	0	4	0	0	0	2	0	1	0	1	<b>31</b>	<b>2.01%</b>	
<b>Total</b>	<b>33</b>	<b>20</b>	<b>98</b>	<b>17</b>	<b>25</b>	<b>19</b>	<b>19</b>	<b>41</b>	<b>17</b>	<b>108</b>	<b>40</b>	<b>6</b>	<b>43</b>	<b>42</b>	<b>37</b>	<b>41</b>	<b>388</b>	<b>32</b>	<b>48</b>	<b>10</b>	<b>17</b>	<b>4</b>	<b>69</b>	<b>41</b>	<b>31</b>	<b>35</b>	<b>224</b>	<b>10</b>	<b>28</b>	<b>1543</b>	<b>100.0%</b>	

**Month End Placement Distribution**



**Length of Stay for Youth whose Placement Type Ended During the FY2010 Month**

		Jul	Aug	Sep	Oct	Nov	Dec	Jan	Feb	Mar	Apr	May	Jun	Avg.
<b>PRTF</b>	# placements	15	26	18	17	17	21	25	12	25	20	24	20	20
	Average # days	98.7	108.5	75.3	110.9	104.1	141.5	91.7	145.9	103.7	96.8	104.3	117.7	108.3
	Median # days	61.0	95.0	71.0	108.0	79.0	123.0	86.0	133.5	87.0	87.5	81.0	83.0	86.5
<b>YRCI</b>	# placements	0	2	0	0	0	2	0	0	2	0	1	0	1
	Average # days	0.0	23.5	0.0	0.0	0.0	135.0	0.0	0.0	46.0	0.0	73.0	0.0	23.1
	Median # days	0.0	23.5	0.0	0.0	0.0	135.0	0.0	0.0	46.0	0.0	73.0	0.0	0.0
<b>YRCII</b>	# placements	126	134	82	108	101	196	90	110	153	126	151	139	126
	Average # days	88.5	107.7	81.7	92.9	85.3	89.2	93.3	81.8	100.9	86.5	100.7	94.5	91.9
	Median # days	76.0	86.5	85.5	73.5	82.0	69.5	88.5	57.5	83.0	74.5	75.0	73.0	75.5

**Length of Stay for Youth in Respective Placement Type on the Last Day of the Month during FY2010**

		Jul	Aug	Sep	Oct	Nov	Dec	Jan	Feb	Mar	Apr	May	Jun	Avg.
<b>PRTF</b>	# youth	81	70	68	80	79	86	76	83	80	78	72	67	77
	Average # days	90.0	89.6	97.0	85.6	96.8	80.9	93.4	89.7	89.7	97.9	103.8	104.0	93.2
	Median # days	70.0	73.5	75.5	63.0	65.0	63.5	69.5	73.0	67.5	69.0	77.0	82.0	69.8
<b>YRCI</b>	# youth	3	3	2	2	2	1	1	2	1	2	2	3	2
	Average # days	44.0	32.0	55.5	86.5	115.5	3.0	33.0	32.0	20.0	33.5	24.5	42.0	43.5
	Median # days	38.0	21.0	55.5	86.5	115.5	3.0	33.0	32.0	20.0	33.5	24.5	31.0	32.5
<b>YRCII</b>	# youth	384	381	404	426	451	390	409	408	411	404	382	382	403
	Average # days	87.6	74.9	81.8	83.3	90.1	85.5	88.9	93.8	87.5	89.3	86.4	78.6	85.6
	Median # days	59.0	53.0	60.5	66.5	65.0	60.0	60.0	72.0	64.0	59.0	60.0	57.0	60.0

