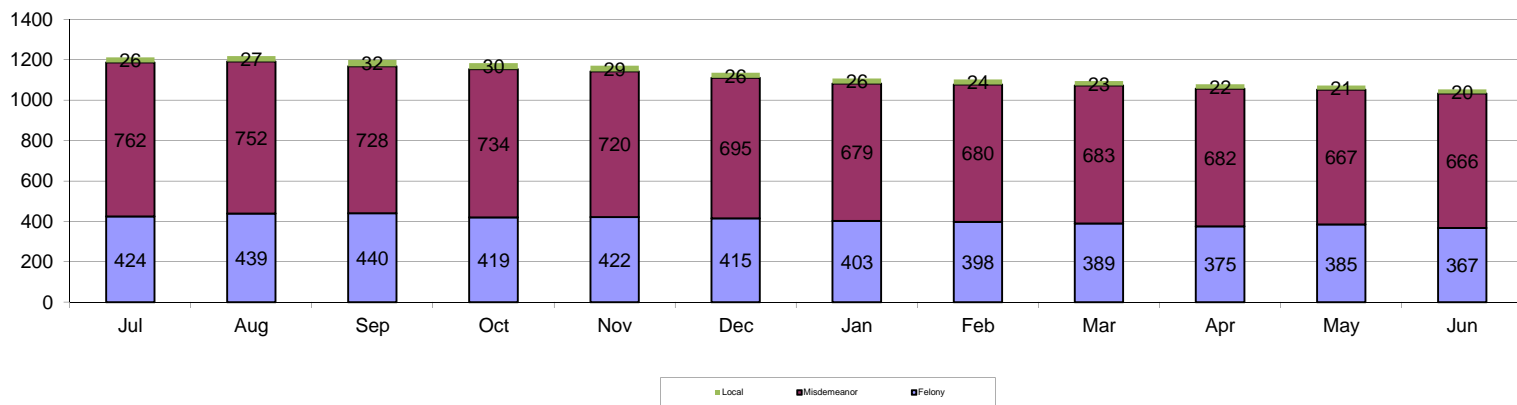


Juvenile Intensive Supervision Probation Youth on Last Day of Month FY 2011

	Jul	Aug	Sep	Oct	Nov	Dec	Jan	Feb	Mar	Apr	May	Jun	Avg of Total
Felony	424	439	440	419	422	415	403	398	389	375	385	367	406
Misdemeanor	762	752	728	734	720	695	679	680	683	682	667	666	704
Local	26	27	32	30	29	26	26	24	23	22	21	20	26
Total	1212	1218	1200	1183	1171	1136	1108	1102	1095	1079	1073	1053	1136

Juvenile Intensive Supervision Probation (JISP) is a structured community-based supervision program that provides an additional sentencing option to Kansas' courts. Youth on JISP have either previously failed traditional court service probation or have committed a serious offense, but do not require an out-of-home placement or commitment to a juvenile correctional facility. This data represents youth on JISP on the last day of the month with the most recent offense type during FY 2011.

JISP Population and Most Recent Offense Type FY 2011



Juvenile Intensive Supervision Probation Youth by Judicial District on Last Day of the Month FY 2011

		1	2	3	4	5	6	7	8	9	10	11	12	13	14	16	15/17/23	18	19	20	21	22	24	25	26	27	28	29	30	31	Total	Average of Total
Jul	Felony	7	6	28	3	5	16	8	18	7	25	12	6	17	9	11	16	66	9	26	20	9	1	27	15	7	14	15	13	8	424	15
	Misdemeanor	26	19	34	13	5	7	24	9	17	75	15	8	40	18	29	36	81	37	35	7	14	8	24	23	18	86	14	33	7	762	26
	Local	0	2	0	0	0	0	0	1	0	0	0	0	0	0	0	0	14	8	0	0	0	0	0	0	1	0	0	0	0	26	1
	Total	33	27	62	16	10	23	32	28	24	100	27	14	57	27	40	52	161	54	61	27	23	9	51	38	26	100	29	46	15	1212	42
Aug	Felony	7	9	26	3	5	15	10	19	5	26	12	5	15	10	12	17	69	8	24	22	10	2	24	18	8	15	19	15	9	439	15
	Misdemeanor	26	17	34	11	6	9	23	8	15	77	15	8	39	18	31	37	79	35	32	6	14	9	25	24	17	84	13	32	8	752	26
	Local	0	1	0	0	0	0	0	1	0	0	0	0	0	0	0	0	16	8	0	0	0	0	0	0	1	0	0	0	0	27	1
	Total	33	27	60	14	11	24	33	28	20	103	27	13	54	28	43	54	164	51	56	28	24	11	49	42	26	99	32	47	17	1218	42
Sep	Felony	9	9	25	2	4	14	11	20	5	25	13	5	16	9	14	17	67	7	24	25	10	3	25	15	8	17	19	14	8	440	15
	Misdemeanor	22	19	35	10	4	8	18	5	15	78	17	9	39	17	31	35	75	36	32	5	13	10	23	27	16	79	12	30	8	728	25
	Local	0	1	0	0	0	0	0	2	0	0	0	0	0	0	0	0	20	8	0	0	0	0	0	0	1	0	0	0	0	32	1
	Total	31	29	60	12	8	22	29	27	20	103	30	14	55	26	45	52	162	51	56	30	23	13	48	42	25	96	31	44	16	1200	41
Oct	Felony	9	8	21	3	4	13	11	20	4	23	8	3	15	9	14	16	64	9	23	24	9	3	24	14	9	17	18	16	8	419	14
	Misdemeanor	23	16	33	11	7	8	17	4	14	89	19	9	40	18	33	33	74	37	33	3	11	9	21	26	17	74	13	33	9	734	25
	Local	0	1	0	0	0	0	0	2	0	0	0	0	0	0	0	0	19	8	0	0	0	0	0	0	0	0	0	0	0	30	1
	Total	32	25	54	14	11	21	28	26	18	112	27	12	55	27	47	49	157	54	56	27	20	12	45	40	26	91	31	49	17	1183	41
Nov	Felony	8	8	22	3	4	14	11	19	3	22	8	3	15	7	14	16	65	10	23	24	10	3	25	15	8	17	24	12	9	422	15
	Misdemeanor	18	18	29	8	7	9	18	5	14	88	22	7	36	17	33	33	76	36	34	3	10	9	22	24	20	69	13	34	8	720	25
	Local	0	1	0	0	0	0	0	2	0	0	0	0	0	0	0	0	19	7	0	0	0	0	0	0	0	0	0	0	0	29	1
	Total	26	27	51	11	11	23	29	26	17	110	30	10	51	24	47	49	160	53	57	27	20	12	47	39	28	86	37	46	17	1171	40
Dec	Felony	7	7	22	2	4	16	9	18	4	23	10	3	16	7	11	16	61	11	20	24	7	4	26	13	9	14	27	14	10	415	14
	Misdemeanor	20	19	25	8	7	10	20	7	14	88	22	7	32	13	29	30	81	31	37	2	10	9	19	20	18	64	11	34	8	695	24
	Local	0	1	0	0	0	0	0	1	0	0	0	0	0	0	0	0	17	6	0	0	0	0	0	0	1	0	0	0	0	26	1
	Total	27	27	47	10	11	26	29	26	18	111	32	10	48	20	40	46	159	48	57	26	17	13	45	33	28	78	38	48	18	1136	39
Jan	Felony	9	7	23	3	4	15	5	11	5	26	8	3	16	7	10	16	62	10	21	23	7	4	27	12	6	15	27	12	9	403	14
	Misdemeanor	19	18	21	7	7	10	17	6	15	89	21	7	28	14	23	35	84	31	39	2	10	9	18	23	20	57	8	33	8	679	23
	Local	0	1	0	0	0	0	0	1	0	0	0	0	0	0	0	0	16	7	0	0	0	0	0	0	1	0	0	0	0	26	1
	Total	28	26	44	10	11	25	22	18	20	115	29	10	44	21	33	51	162	48	60	25	17	13	45	35	27	72	35	45	17	1108	38
Feb	Felony	10	6	24	4	4	13	4	12	6	23	8	3	14	7	11	17	65	10	20	21	6	4	25	12	6	18	24	13	8	398	14
	Misdemeanor	22	24	21	10	7	9	16	9	14	88	20	7	29	12	21	34	87	32	34	2	11	9	18	20	19	55	8	34	8	680	23
	Local	0	1	0	0	0	0	0	1	0	0	0	0	0	0	0	0	14	7	0	0	0	0	0	0	0	0	0	1	0	24	1
	Total	32	31	45	14	11	22	20	22	20	111	28	10	43	19	32	51	166	49	54	23	17	13	43	32	25	73	32	48	16	1102	38
Mar	Felony	11	6	24	5	2	13	5	8	5	21	8	4	14	7	9	17	68	8	20	20	5	4	26	10	5	18	24	13	9	389	13
	Misdemeanor	19	24	22	11	6	8	18	13	14	83	22	6	30	10	26	37	85	32	32	3	14	9	14	16	24	54	10	33	8	683	24
	Local	0	1	0	0	0	0	0	1	0	0	0	0	0	0	0	0	13	7	0	0	0	0	0	0	0	0	0	1	0	23	1
	Total	30	31	46	16	8	21	23	22	19	104	30	10	44	17	35	54	166	47	52	23	19	13	40	26	29	72	34	47	17	1095	38
Apr	Felony	11	4	25	7	4	11	8	8	4	21	7	4	14	7	9	15	64	7	17	20	3	3	24	8	6	19	22	12	11	375	13
	Misdemeanor	15	25	22	10	5	10	19	14	14	86	21	6	30	10	27	38	86	30	33	2	14	9	14	18	18	53	10	37	6	682	24
	Local	0	1	0	0	0	0	0	1	0	0	0	0	0	0	0	0	10	9	0	0	0	0	0	0	0	0	0	1	0	22	1
	Total	26	30	47	17	9	21	27	23	18	107	28	10	44	17	36	53	160	46	50	22	17	12	38	26	24	72	32	50	17	1079	37
May	Felony	11	4	26	8	3	10	12	9	5	23	8	4	15	7	8	14	63	7	18	19	4	3	21	10	6	18	23	13	13	385	13
	Misdemeanor	14	24	21	9	5	10	18	13	13	82	24	5	27	8	24	40	84	26	37	2	15	9	14	21	17	56	7	37	5	667	23
	Local	0	1	0	0	0	0	0	1	0	0	0	0	0	0	0	0	10	8	0	0	0	0	0	0	0	0	0	1	0	21	1
	Total	25	29	47	17	8	20	30	23	18	105	32	9	42	15	32	54	157	41	55	21	19	12	35	31	23	74	30	51	18	1073	37
Jun	Felony	13	4	25	9	6	11	13	7	6	24	9	4	14	4	8	14	56	4	16	16	4	3	20	7	6	18	22	12	12	367	13
	Misdemeanor	14	23	19	6	6	10	18	14	12	80	26	6	27	11	23	39	85	23	35	3	15	10	11	26	15	56	10	37	6	666	23
	Local	0	0	0	0	0	0	0	1	0	0	1	0	0	0	0	0	9	8	0	0	0	0	0	0	0	0	0	1	0	20	1
	Total	27	27	44	15	12	21	31	22	<																						