

Statewide Month End Population: Placements for Youth in the Custody of JJA on the Last Day of Each Month

Youth are placed in JJA custody by the court and may be placed at home, with relatives, in a juvenile correctional facility or in another type of community placement. Data below is summary information for youth in JJA custody on the last day of a month with comparative data from previous years.

Placement Summary

State Fiscal Year 2012	Jul	Aug	Sep	Oct	Nov	Dec	Jan	Feb	Mar	Apr	May	Jun	FY12 Avg.	FY12 Plcmt Avg As % of Total
Juvenile Correctional Facility	321	331	331	328	348	357	351	344	329	335	333	336	337.0	21.4%
Detention	162	148	160	161	172	162	146	148	177	159	158	144	158.1	10.0%
Facility/Other ¹	89	82	95	85	91	90	90	104	95	91	99	95	92.2	5.8%
Foster Home	30	30	32	34	32	35	38	33	28	33	33	31	32.4	2.1%
Home/Relative	352	351	332	319	285	317	300	301	307	296	313	336	317.4	20.1%
Juvenile Justice Foster Care	51	51	45	43	41	41	43	45	49	46	40	39	44.5	2.8%
AWOL	79	91	79	90	87	85	90	89	86	89	92	89	87.2	5.5%
Psychiatric Residential Treatment Center	54	51	48	46	41	37	39	40	44	40	43	35	43.2	2.7%
Not Reported	53	56	35	46	49	45	66	66	58	95	82	78	60.8	3.9%
Youth Residential Center I	0	0	0	0	0	0	0	0	0	0	0	0	0.0	0.0%
Youth Residential Center II	370	370	396	408	414	405	410	418	419	411	413	429	405.3	25.7%
Total Custody Population	1,561	1,561	1,553	1,560	1,560	1,574	1,573	1,588	1,592	1,595	1,606	1,612	1577.9	100.0%
% Change from Previous Year	2.36%	2.70%	1.64%	1.69%	2.30%	1.35%	1.68%	2.78%	2.91%	1.79%	3.01%	2.61%	2.24%	

¹ Includes Emergency Shelter, Maternity or Substance Abuse Residential Treatment, Hospital, Independent Living

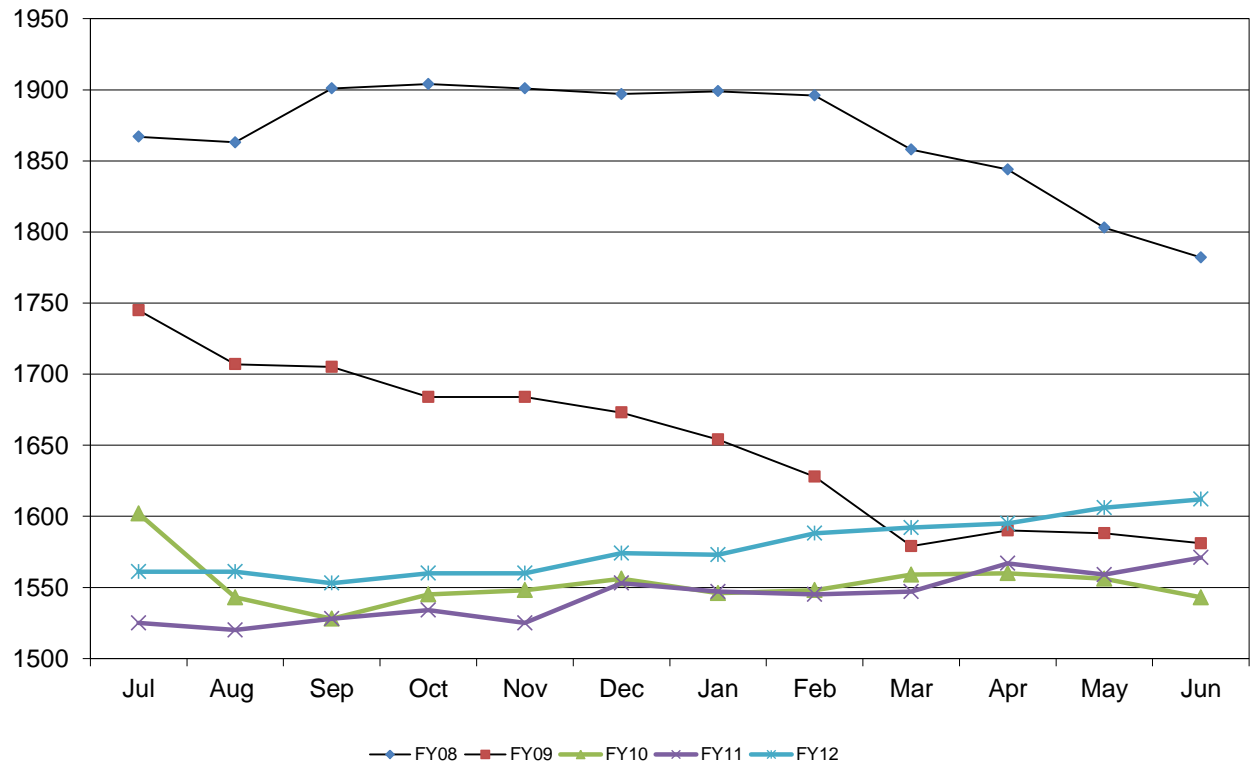
²The fiscal year average is calculated by summing the average of all placements

Fiscal Year Flashback	FY08 Mo. Avg	FY09 Mo. Avg	FY10 Mo. Avg	FY11 Mo. Avg
Juvenile Correctional Facility	401.4	348.7	326.5	322.8
Detention	178.2	167.7	157.3	161.3
Facility/Other*	88.8	97.1	100.7	106.2
Foster Home	41.7	27.3	20.2	26.3
Home/Relative	551.3	402.3	346.3	320.6
Juvenile Justice Foster Care	n/a	11.1	26.0	41.1
AWOL	109.8	103.0	83.8	90.3
Psychiatric Residential Treatment Center	111.2	75.6	76.5	65.3
Not Reported	1.2	25.4	11.9	28.6
Youth Residential Center I	5.8	2.8	1.8	2.8
Youth Residential Center II	378.8	393.4	402.6	377.3
Total Custody Population	1867.9	1654.3	1553.7	1542.4

**Statewide Month End Population: Placements for Youth in the Custody of JJA on the Last Day of Each Month
Placement Detail**

Placements	Jul	Aug	Sep	Oct	Nov	Dec	Jan	Feb	Mar	Apr	May	Jun	Avg	Avg as a %
Community Integration Program	13	12	11	13	10	15	14	14	17	16	21	17	14.4	1%
Juvenile Justice Foster Care	51	51	45	43	41	41	43	45	49	46	40	39	44.5	3%
Detention	162	148	160	161	172	162	146	148	177	159	158	144	158.1	10%
Emergency Foster Care	0	0	0	0	0	0	0	0	0	0	0	0	0.0	0%
Emergency Shelter	4	5	6	2	7	2	3	3	1	1	1	1	3.0	0%
Family Resource Home	0	0	0	0	0	2	1	1	1	1	1	1	0.7	0%
Home	339	339	321	311	279	310	292	294	299	288	304	324	308.3	20%
Hospital	2	4	4	1	1	2	2	3	3	6	3	6	3.1	0%
Juvenile Correctional Facility	321	331	331	328	348	357	351	344	329	335	333	336	337.0	21%
Kinship/Non-Related Kin Care	4	4	4	2	2	2	1	1	1	1	1	2	2.1	0%
Not Reported	53	56	35	46	49	45	66	66	58	95	82	78	60.8	4%
Psychiatric Residential Treatment Facility	54	51	48	46	41	37	39	40	44	40	43	35	43.2	3%
Relative Placement	9	8	7	6	4	5	7	6	7	7	8	10	7.0	0%
Residential Drug/Alcohol Treatment	2	4	6	5	9	6	6	7	4	5	4	3	5.1	0%
Residential Maternity Group Home	7	7	8	8	7	6	5	5	4	5	5	7	6.2	0%
Runaway/ AWOL	79	91	79	90	87	85	90	89	86	89	92	89	87.2	6%
Sanction House	1	1	3	2	2	2	2	3	0	0	2	2	1.7	0%
Specialized Family Resource Home	10	6	7	10	9	12	14	14	14	15	14	13	11.5	1%
Therapeutic Foster Care	13	17	17	16	16	17	19	14	10	13	14	11	14.8	1%
Transitional Living Program	67	56	65	62	62	61	62	73	69	62	67	65	64.3	4%
Youth Residential Center I	0	0	0	0	0	0	0	0	0	0	0	0	0.0	0%
Youth Residential Center II	370	370	396	408	414	405	410	418	419	411	413	429	405.3	26%
Total	1,561	1,561	1,553	1,560	1,560	1,574	1,573	1,588	1,592	1,595	1,606	1,612	1577.9	1.0

Statewide JJA Custody Month End Population

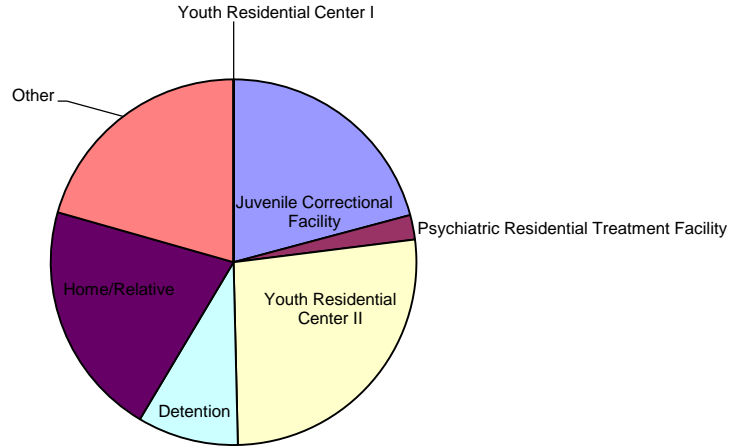


Statewide Month End Population: Placements for Youth in the Custody of JJA on June 30, 2012 by Judicial District

Judicial District

	1	2	3	4	5	6	7	8	9	10	11	12	13	14	16	15/17/23	18	19	20	21	22	24	25	26	27	28	29	30	31	Tot	%
Juvenile Correctional Facility	8	9	31	3	3	5	4	18	6	12	7	1	6	4	14	4	70	8	4	2	7	0	17	7	6	22	55	3	0	336	20.84%
Detention	1	2	13	1	3	3	3	3	3	6	3	0	2	8	3	4	31	2	1	1	0	0	5	5	1	5	32	2	1	144	8.93%
Facility/Other	6	0	7	1	4	7	3	1	0	4	2	0	7	0	2	3	20	1	3	1	0	3	5	3	2	3	7	0	0	95	5.89%
Foster Home	0	1	3	1	1	1	0	0	0	0	1	0	0	0	0	3	4	0	3	0	0	1	1	0	1	4	4	0	2	31	1.92%
Home/Relative	13	7	21	3	7	1	1	10	3	20	3	2	7	12	11	10	83	5	1	2	8	1	14	8	13	8	51	2	9	336	20.84%
Juvenile Justice Foster Care	1	0	7	0	0	1	0	1	0	1	0	0	0	0	7	5	3	2	5	0	0	0	3	0	1	0	2	0	0	39	2.42%
AWOL	1	0	2	0	0	0	3	2	1	3	0	0	0	1	1	1	22	4	3	0	0	0	1	3	1	1	36	0	3	89	5.52%
Psychiatric Residential Treatment Facility	0	1	0	2	1	2	1	3	1	3	1	0	2	0	0	1	0	2	1	1	3	1	0	1	2	1	2	2	1	35	2.17%
Youth Residential Center I	0	0	0	0	0	0	0	0	0	0	0	0	0	0	0	0	0	0	0	0	0	0	0	0	0	0	0	0	0	0	0.00%
Youth Residential Center II	17	4	41	6	16	7	8	13	3	30	14	4	10	19	13	13	80	5	21	2	1	2	14	15	7	19	36	5	4	429	26.61%
Not Reported	3	2	4	3	0	2	1	1	0	8	4	0	0	3	4	0	21	1	0	0	0	0	1	3	0	3	11	0	3	78	4.84%
Total	50	26	129	20	35	29	24	52	17	87	35	7	34	47	55	44	334	30	42	9	19	8	61	45	34	66	236	14	23	1612	100.0%

Month End Placement Distribution

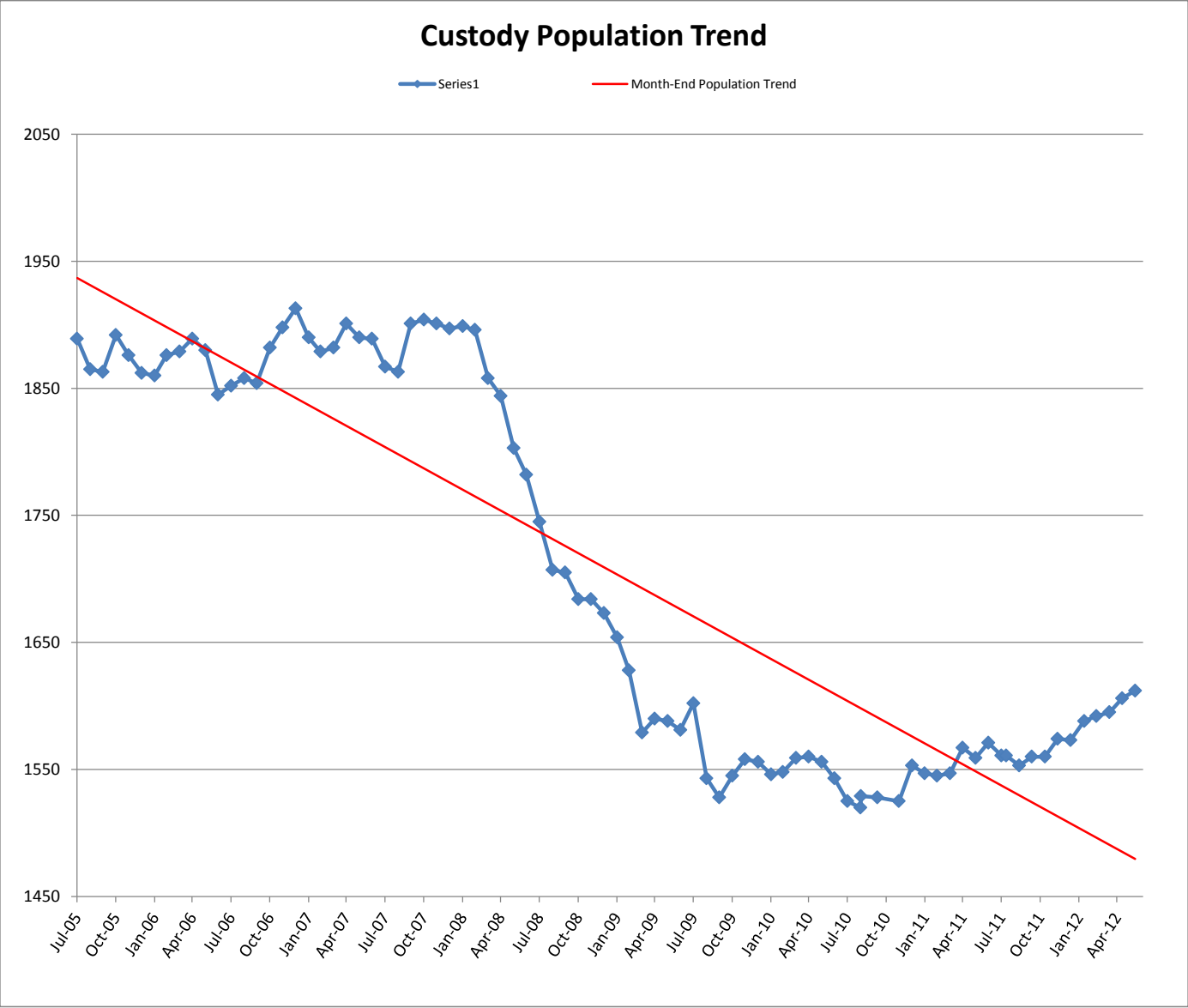


Length of Stay for Youth Whose Placement Type Ended During the FY2012 Month

		Jul	Aug	Sep	Oct	Nov	Dec	Jan	Feb	Mar	Apr	May	Jun	Avg
PRTF	# placements	10	10	21	14	10	13	6	10	8	10	10	15	11
	Average # days	151.1	144.2	130.0	155.5	103.0	119.7	173.5	146.0	104.0	146.0	92.1	103.0	130.7
	Median # days	89.0	148.5	90.0	86.0	66.5	128.0	140.5	139.5	97.5	88.0	89.0	86.0	89.5
YRCI	# placements	0	0	0	0	0	0	0	0	0	0	0	0	0
	Average # days	0.0	0.0	0.0	0.0	0.0	0.0	0.0	0.0	0.0	0.0	0.0	0.0	0.0
	Median # days	0.0	0.0	0.0	0.0	0.0	0.0	0.0	0.0	0.0	0.0	0.0	0.0	0.0
YRCII	# placements	112	152	147	140	85	137	106	122	127	138	158	113	128
	Average # days	93.1	83.0	82.8	87.2	73.3	118.3	90.5	97.1	99.6	84.3	124.0	91.9	93.8
	Median # days	89.0	62.0	57.0	56.0	58.0	108.5	85.0	90.0	89.0	68.5	100.0	85.0	85.0

Length of Stay for Youth in Respective Placement Type on the Last Day of the Month During FY 2012

		Jul	Aug	Sep	Oct	Nov	Dec	Jan	Feb	Mar	Apr	May	Jun	Avg.
PRTF	# youth	54	51	48	46	41	37	39	40	44	40	43	35	43
	Average # days	105.1	113.0	159.0	149.0	110.0	119.0	119.5	109.0	99.7	97.9	97.4	110.9	115.8
	Median # days	60.5	70.0	80.0	89.0	85.5	98.0	110.5	90.0	83.0	77.0	72.0	72.0	81.5
YRCI	# youth	0	0	0	0	0	0	0	0	0	0	0	0	0
	Average # days	0.0	0.0	0.0	0.0	0.0	0.0	0.0	0.0	0.0	0.0	0.0	0.0	0.0
	Median # days	0.0	0.0	0.0	0.0	0.0	0.0	0.0	0.0	0.0	0.0	0.0	0.0	0.0
YRCII	# youth	370	370	396	408	414	405	410	418	419	411	413	429	405
	Average # days	83.4	79.7	165.0	163.0	162.0	97.7	103.4	100.9	90.9	90.9	75.0	78.2	107.5
	Median # days	62.0	70.0	82.0	89.0	86.0	82.0	86.0	88.0	83.0	76.0	71.0	71.5	82.0



AWOL Population Month-End Trend

