

data as of 7/17/2012

## Juvenile Correctional Facility Population Activity Fiscal Year 2012

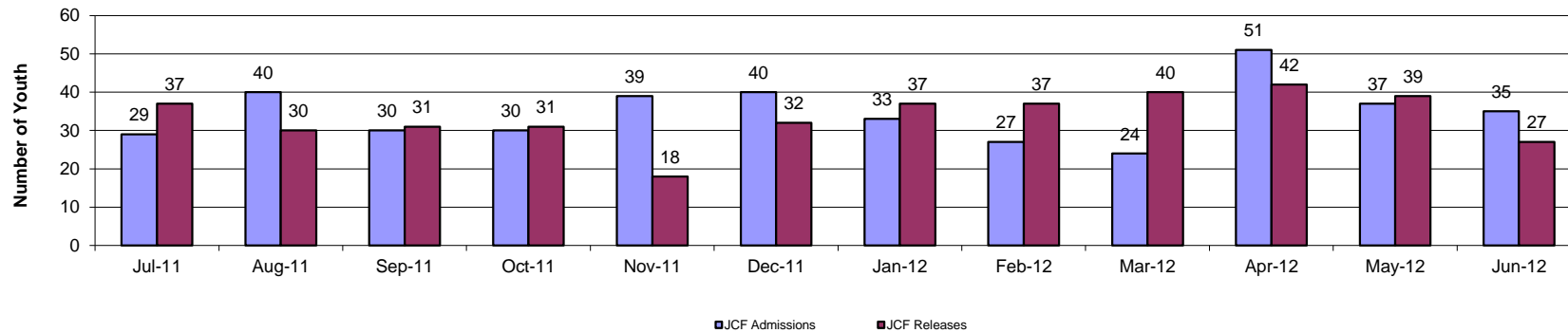
There were 23% more admissions than releases during the month of June. The statewide month end population for June 2012 (349) is 1% more than the month end population for June 2011 (345).



### Statewide JCF Activity Summary

	Jul-11	Aug-11	Sep-11	Oct-11	Nov-11	Dec-11	Jan-12	Feb-12	Mar-12	Apr-12	May-12	Jun-12	Total	FY12 Avg
JCF Admissions	29	40	30	30	39	40	33	27	24	51	37	35	415	34.6
JCF Releases	37	30	31	31	18	32	37	37	40	42	39	27	401	33.4
Month End Population	327	337	336	335	356	364	360	350	334	343	341	349	N/A	344.3

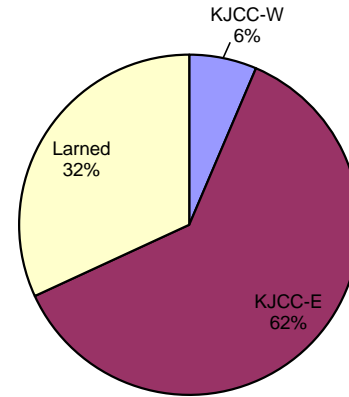
### Statewide JCF Admissions and Releases FY12



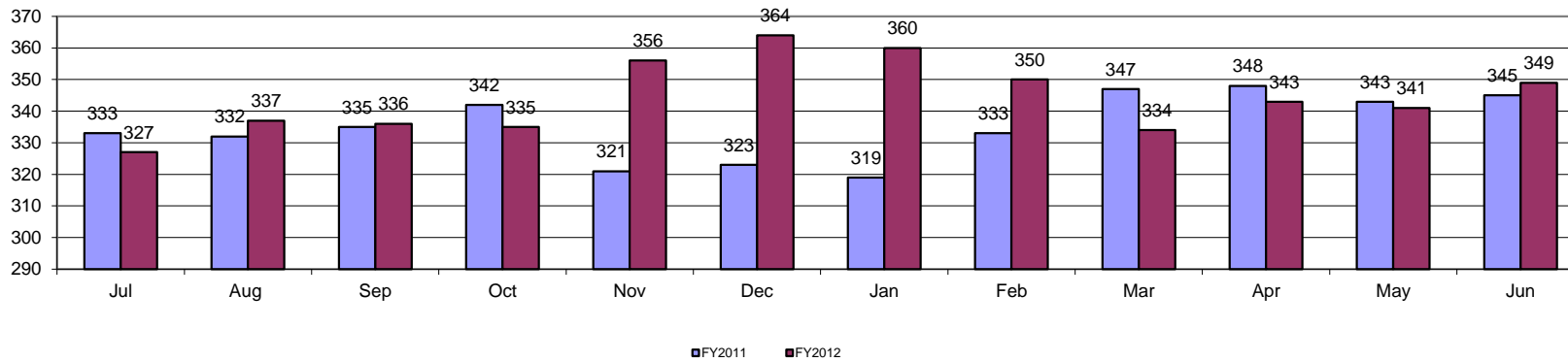
**Statewide JCF Month End Population**

The average month end population for FY12 (344) is 12 percent more than the average month end population during FY11 (333).

**FY12 Average:  
Youth JCF Placement Distribution**



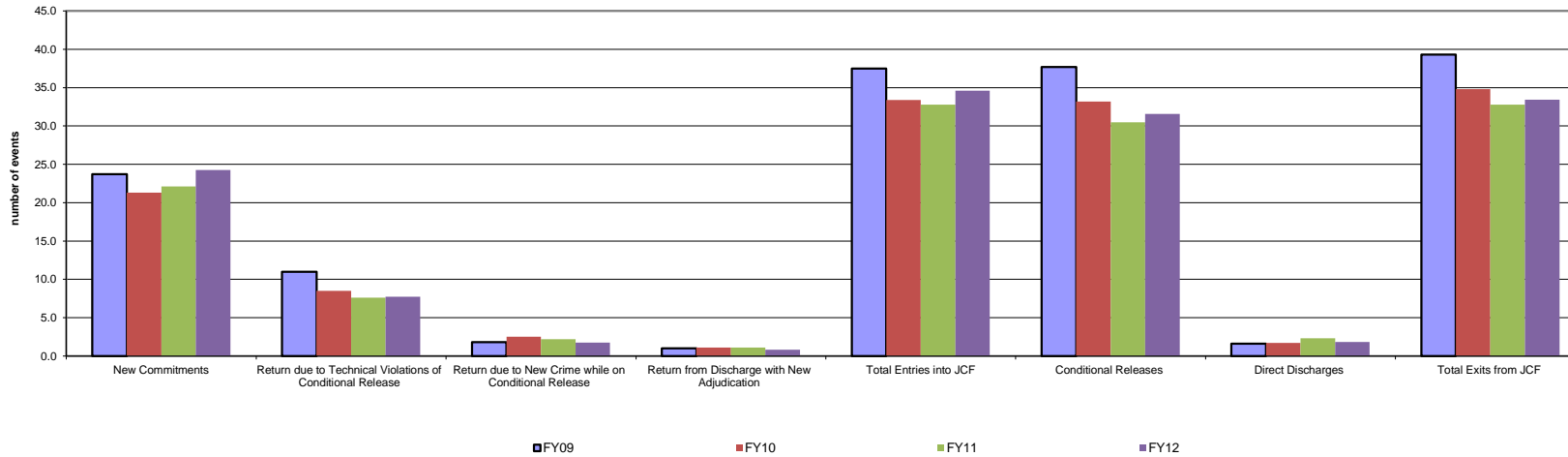
**Statewide Juvenile Correctional Facility Month End Population**



**Fiscal Year Flashback  
Census Events: Average Monthly Frequency**

	FY06	FY07	FY08	FY09	FY10	FY11	FY12
New Commitments	26.4	30.7	25.8	23.7	21.3	22.1	24.3
Return due to Technical Violations of Conditional Release	12.5	11.2	8.7	11.0	8.5	7.6	7.8
Return due to New Crime while on Conditional Release	1.4	2.5	1.8	1.8	2.5	2.2	1.8
Return from Discharge with New Adjudication	0.4	0.3	0.7	1.0	1.1	1.1	0.8
<b>Total Entries into JCF</b>	<b>40.8</b>	<b>44.6</b>	<b>37.0</b>	<b>37.5</b>	<b>33.4</b>	<b>32.8</b>	<b>34.6</b>
Conditional Releases	47.4	38.2	40.5	37.7	33.2	30.5	31.6
Direct Discharges	1.1	1.8	1.5	1.6	1.7	2.3	1.8
<b>Total Exits from JCF</b>	<b>48.5</b>	<b>40.0</b>	<b>42.0</b>	<b>39.3</b>	<b>34.8</b>	<b>32.8</b>	<b>33.4</b>

**Statewide Average JCF Census # Events Across Years**



JCF Detail: Statewide

<b>Youth Entering All JCF</b>	<b>Jul-11</b>	<b>Aug-11</b>	<b>Sep-11</b>	<b>Oct-11</b>	<b>Nov-11</b>	<b>Dec-11</b>	<b>Jan-12</b>	<b>Feb-12</b>	<b>Mar-12</b>	<b>Apr-12</b>	<b>May-12</b>	<b>Jun-12</b>	<b>Total</b>	<b>Monthly Avg</b>
New Commitments	23	29	21	24	23	29	23	19	16	37	25	22	291	24.3
Return due to Technical Violations of Conditional Release	4	9	5	2	13	10	7	8	5	11	8	11	93	7.8
Return due to New Crime while on Conditional Release	1	1	4	3	1	0	1	0	2	3	3	2	21	1.8
Return from Discharge with New Adjudication	1	1	0	1	2	1	2	0	1	0	1	0	10	0.8
<b>Total Entries into JCF</b>	<b>29</b>	<b>40</b>	<b>30</b>	<b>30</b>	<b>39</b>	<b>40</b>	<b>33</b>	<b>27</b>	<b>24</b>	<b>51</b>	<b>37</b>	<b>35</b>	<b>415</b>	<b>34.6</b>
<b>Youth Exiting Facility</b>	<b>Jul-11</b>	<b>Aug-11</b>	<b>Sep-11</b>	<b>Oct-11</b>	<b>Nov-11</b>	<b>Dec-11</b>	<b>Jan-12</b>	<b>Feb-12</b>	<b>Mar-12</b>	<b>Apr-12</b>	<b>May-12</b>	<b>Jun-12</b>	<b>Total</b>	<b>Monthly Avg</b>
Conditional Releases	37	29	30	29	17	29	34	35	37	39	37	26	379	31.6
Direct Discharges	0	1	1	2	1	3	3	2	3	3	2	1	22	1.8
<b>Total Exits from Facility</b>	<b>37</b>	<b>30</b>	<b>31</b>	<b>31</b>	<b>18</b>	<b>32</b>	<b>37</b>	<b>37</b>	<b>40</b>	<b>42</b>	<b>39</b>	<b>27</b>	<b>401</b>	<b>33.4</b>
<b>Month End Population</b>	<b>Jul-11</b>	<b>Aug-11</b>	<b>Sep-11</b>	<b>Oct-11</b>	<b>Nov-11</b>	<b>Dec-11</b>	<b>Jan-12</b>	<b>Feb-12</b>	<b>Mar-12</b>	<b>Apr-12</b>	<b>May-12</b>	<b>Jun-12</b>	<b>Total</b>	<b>Monthly Avg</b>
Total # Youth placed in JCF on last day of the month	327	337	336	335	356	364	360	350	334	343	341	349		344.3

**JCF Detail: Females**

<b>Youth Entering Females</b>	<b>Jul-11</b>	<b>Aug-11</b>	<b>Sep-11</b>	<b>Oct-11</b>	<b>Nov-11</b>	<b>Dec-11</b>	<b>Jan-12</b>	<b>Feb-12</b>	<b>Mar-12</b>	<b>Apr-12</b>	<b>May-12</b>	<b>Jun-12</b>	<b>Total</b>	<b>Monthly Avg</b>
New Commitments	3	4	4	2	5	1	1	3	1	2	1	1	28	2.3
Return due to Technical Violations of Conditional Release	0	1	0	1	1	0	0	0	0	3	2	0	8	0.7
Return due to New Crime while on Conditional Release	0	0	1	1	0	0	0	0	0	0	0	1	3	0.3
Return from Discharge with New Adjudication	0	0	0	0	0	0	0	0	0	0	0	0	0	0.0
Transferring In from another JCF (N/A)	0	0	0	0	0	0	0	0	0	0	0	0	0	0.0
<b>Total Entries into JCF</b>	<b>3</b>	<b>5</b>	<b>5</b>	<b>4</b>	<b>6</b>	<b>1</b>	<b>1</b>	<b>3</b>	<b>1</b>	<b>5</b>	<b>3</b>	<b>2</b>	<b>39</b>	<b>3.3</b>
<b>Youth Exiting Facility</b>	<b>Jul-11</b>	<b>Aug-11</b>	<b>Sep-11</b>	<b>Oct-11</b>	<b>Nov-11</b>	<b>Dec-11</b>	<b>Jan-12</b>	<b>Feb-12</b>	<b>Mar-12</b>	<b>Apr-12</b>	<b>May-12</b>	<b>Jun-12</b>	<b>Total</b>	<b>Monthly Avg</b>
Transferred out to another JCF (N/A)	0	0	0	0	0	0	0	0	0	0	0	0	0	N/A
Conditional Releases	4	1	3	3	0	3	6	4	3	0	0	0	27	2.3
Direct Discharges	0	0	0	0	0	0	0	2	1	0	0	0	3	0.3
<b>Total Exits from Facility</b>	<b>4</b>	<b>1</b>	<b>3</b>	<b>3</b>	<b>0</b>	<b>3</b>	<b>6</b>	<b>6</b>	<b>4</b>	<b>0</b>	<b>0</b>	<b>0</b>	<b>30</b>	<b>2.5</b>
<b>Month End Population</b>	<b>Jul-11</b>	<b>Aug-11</b>	<b>Sep-11</b>	<b>Oct-11</b>	<b>Nov-11</b>	<b>Dec-11</b>	<b>Jan-12</b>	<b>Feb-12</b>	<b>Mar-12</b>	<b>Apr-12</b>	<b>May-12</b>	<b>Jun-12</b>	<b>Total</b>	<b>Monthly Avg</b>
Total # Youth placed in JCF on last day of the month	16	20	22	23	29	27	22	19	16	21	24	26		22.1

**JCF Detail: Kansas Juvenile Correctional Complex**

<b>Youth Entering KJCC</b>	<b>Jul-11</b>	<b>Aug-11</b>	<b>Sep-11</b>	<b>Oct-11</b>	<b>Nov-11</b>	<b>Dec-11</b>	<b>Jan-12</b>	<b>Feb-12</b>	<b>Mar-12</b>	<b>Apr-12</b>	<b>May-12</b>	<b>Jun-12</b>	<b>Total</b>	<b>Monthly Avg</b>
New Commitments	20	25	17	22	18	28	22	16	15	35	24	21	263	21.9
Return due to Technical Violations of Conditional Release	4	8	5	1	12	10	7	8	5	8	6	11	85	7.1
Return due to new crime while on conditional release	1	1	3	2	1	0	1	0	2	3	3	1	18	1.5
Return from Discharge with New Adjudication	1	1	0	1	2	1	2	0	1	0	1	0	10	0.8
Transferring In from another JCF	0	3	0	7	0	0	5	0	1	1	0	0	17	1.4
<b>Total Entries into JCF</b>	<b>26</b>	<b>38</b>	<b>25</b>	<b>33</b>	<b>33</b>	<b>39</b>	<b>37</b>	<b>24</b>	<b>24</b>	<b>47</b>	<b>34</b>	<b>33</b>	<b>393</b>	<b>32.8</b>
<b>Youth Exiting Facility</b>	<b>Jul-11</b>	<b>Aug-11</b>	<b>Sep-11</b>	<b>Oct-11</b>	<b>Nov-11</b>	<b>Dec-11</b>	<b>Jan-12</b>	<b>Feb-12</b>	<b>Mar-12</b>	<b>Apr-12</b>	<b>May-12</b>	<b>Jun-12</b>	<b>Total</b>	<b>Monthly Avg</b>
Transferred out to another JCF	4	10	13	17	0	11	15	7	7	17	12	18	131	10.9
Conditional Releases	25	24	18	21	17	14	22	21	21	29	22	15	249	20.8
Direct Discharges	0	1	1	1	1	1	3	0	2	2	0	1	13	1.1
<b>Total Exits from Facility</b>	<b>29</b>	<b>35</b>	<b>32</b>	<b>39</b>	<b>18</b>	<b>26</b>	<b>40</b>	<b>28</b>	<b>30</b>	<b>48</b>	<b>34</b>	<b>34</b>	<b>393</b>	<b>32.8</b>
<b>Month End Population</b>	<b>Jul-11</b>	<b>Aug-11</b>	<b>Sep-11</b>	<b>Oct-11</b>	<b>Nov-11</b>	<b>Dec-11</b>	<b>Jan-12</b>	<b>Feb-12</b>	<b>Mar-12</b>	<b>Apr-12</b>	<b>May-12</b>	<b>Jun-12</b>	<b>Total</b>	<b>Monthly Avg</b>
Total # Youth placed in JCF on last day of the month	208	211	204	198	213	226	223	219	213	212	212	211		212.5

**JCF Detail: Larned Juvenile Correctional Facility**

<b>Youth Entering Larned Facility</b>	<b>Jul-11</b>	<b>Aug-11</b>	<b>Sep-11</b>	<b>Oct-11</b>	<b>Nov-11</b>	<b>Dec-11</b>	<b>Jan-12</b>	<b>Feb-12</b>	<b>Mar-12</b>	<b>Apr-12</b>	<b>May-12</b>	<b>Jun-12</b>	<b>Total</b>	<b>Monthly Avg</b>
New Commitments	0	0	0	0	0	0	0	0	0	0	0	0	0	0.0
Return due to Technical Violations of Conditional Release	0	0	0	0	0	0	0	0	0	0	0	0	0	0.0
Return due to New Crime while on Conditional Release	0	0	0	0	0	0	0	0	0	0	0	0	0	0.0
Return from Discharge with New Adjudication	0	0	0	0	0	0	0	0	0	0	0	0	0	0.0
Transferring In from another JCF	4	10	13	17	0	11	15	7	7	17	12	18	131	10.9
<b>Total Entries into JCF</b>	<b>4</b>	<b>10</b>	<b>13</b>	<b>17</b>	<b>0</b>	<b>11</b>	<b>15</b>	<b>7</b>	<b>7</b>	<b>17</b>	<b>12</b>	<b>18</b>	<b>131</b>	<b>10.9</b>
<b>Youth Exiting Facility</b>	<b>Jul-11</b>	<b>Aug-11</b>	<b>Sep-11</b>	<b>Oct-11</b>	<b>Nov-11</b>	<b>Dec-11</b>	<b>Jan-12</b>	<b>Feb-12</b>	<b>Mar-12</b>	<b>Apr-12</b>	<b>May-12</b>	<b>Jun-12</b>	<b>Total</b>	<b>Monthly Avg</b>
Transferred out to another JCF	0	3	0	7	0	0	5	0	1	1	0	0	17	1.4
Conditional Releases	8	4	9	5	0	12	6	10	13	10	15	11	103	8.6
Direct Discharges	0	0	0	1	0	2	0	0	0	1	2	0	6	0.5
<b>Total Exits from Facility</b>	<b>8</b>	<b>7</b>	<b>9</b>	<b>13</b>	<b>0</b>	<b>14</b>	<b>11</b>	<b>10</b>	<b>14</b>	<b>12</b>	<b>17</b>	<b>11</b>	<b>126</b>	<b>10.5</b>
<b>Month End Population</b>	<b>Jul-11</b>	<b>Aug-11</b>	<b>Sep-11</b>	<b>Oct-11</b>	<b>Nov-11</b>	<b>Dec-11</b>	<b>Jan-12</b>	<b>Feb-12</b>	<b>Mar-12</b>	<b>Apr-12</b>	<b>May-12</b>	<b>Jun-12</b>	<b>Total</b>	<b>Monthly Avg</b>
Total # Youth placed in JCF on last day of the month	103	106	110	114	114	111	115	112	105	110	105	112		109.8

**JCF Month End Summary Management Information**  
**For Youth Placed in JCF on Last Day of the Month in FY12**

**Statewide Summary**

Fiscal Year 2012 Month End

<b>Length of Stay &amp; Age</b>	<b>Jul</b>	<b>Aug</b>	<b>Sep</b>	<b>Oct</b>	<b>Nov</b>	<b>Dec</b>	<b>Jan</b>	<b>Feb</b>	<b>Mar</b>	<b>Apr</b>	<b>May</b>	<b>Jun</b>
Average Months in JCF	10.9	9.3	11.0	11.1	11.0	10.6	11.0	11.2	9.3	8.7	8.7	8.6
Median Months In JCF	7.4	6.1	7.1	7.2	6.8	6.5	7.0	7.0	5.3	5.4	5.2	5.2
Average Age	17.8	17.8	17.8	17.8	17.8	17.8	17.8	17.9	17.9	17.9	17.8	17.9
Median Age	17.9	17.8	17.8	17.9	17.9	17.9	17.9	17.9	18.0	17.9	17.8	17.9

**Female Summary**

Fiscal Year 2012 Month End

<b>Length of Stay &amp; Age</b>	<b>Jul</b>	<b>Aug</b>	<b>Sep</b>	<b>Oct</b>	<b>Nov</b>	<b>Dec</b>	<b>Jan</b>	<b>Feb</b>	<b>Mar</b>	<b>Apr</b>	<b>May</b>	<b>Jun</b>
Average Months in JCF	8.1	7.3	7.2	6.9	6.4	7.6	9.2	9.5	10.2	8.7	8.5	8.8
Median Months In JCF	5.0	5.4	4.3	3.0	3.0	4.1	5.6	5.4	6.8	5.1	4.4	4.6
Average Age	17.7	17.5	17.4	17.6	17.4	17.4	17.5	17.6	17.8	17.4	17.3	17.3
Median Age	17.7	17.5	17.4	17.4	17.4	17.4	17.4	17.4	17.5	17.2	17.1	17.2

**KJCC Summary**

Fiscal Year 2012 Month End

<b>Length of Stay &amp; Age</b>	<b>Jul</b>	<b>Aug</b>	<b>Sep</b>	<b>Oct</b>	<b>Nov</b>	<b>Dec</b>	<b>Jan</b>	<b>Feb</b>	<b>Mar</b>	<b>Apr</b>	<b>May</b>	<b>Jun</b>
Average Months for all Youth	9.0	8.2	9.2	9.5	9.1	8.4	9.0	9.4	8.2	8.0	7.9	8.2
Median Months for all Youth	5.1	5.2	5.3	5.6	5.2	4.7	5.2	5.9	5.2	5.0	5.1	5.5
Average Age All Youth	17.7	17.7	17.7	17.7	17.7	17.7	17.8	17.8	17.8	17.9	17.8	17.8
Median Age All Youth	17.9	17.7	17.7	17.6	17.7	17.7	17.8	17.9	17.9	17.9	17.9	17.9

**LJCF Summary**

Fiscal Year 2012 Month End

<b>Length of Stay &amp; Age</b>	<b>Jul</b>	<b>Aug</b>	<b>Sep</b>	<b>Oct</b>	<b>Nov</b>	<b>Dec</b>	<b>Jan</b>	<b>Feb</b>	<b>Mar</b>	<b>Apr</b>	<b>May</b>	<b>Jun</b>
Average Months in JCF	15.3	11.8	15.0	14.7	15.7	15.8	15.3	15.1	11.4	10.1	10.2	9.2
Median Months In JCF	11.6	8.9	11.5	11.2	12.2	12.6	12.1	11.6	6.9	6.2	5.9	4.8
Average Age	18.1	18.2	18.1	18.1	18.2	18.2	18.0	18.0	18.1	18.1	18.1	18.1
Median Age	18.1	18.2	18.1	18.1	18.2	18.2	18.1	18.1	18.3	18.2	18.2	18.2



### Age of All JCF Youth June 2012 Month End Population

