

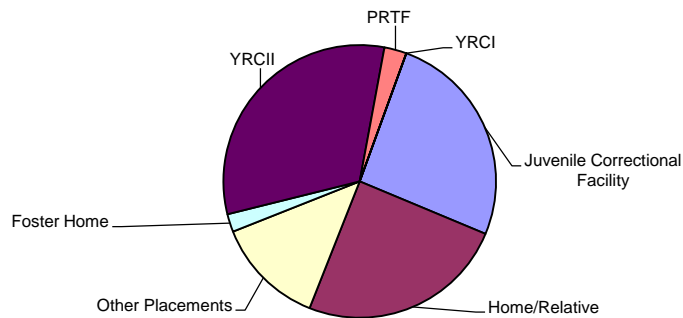
Statewide Month End Population: Placements for Youth in the Custody of JJA on the Last Day of Each Month

Youth are placed in JJA custody by the court and may be placed at home, with relatives, in a juvenile correctional facility or in another type of community placement. Data below is summary information for youth in JJA custody on the last day of a month with comparative data from previous years.

Placement Summary

State Fiscal Year 2013	Jul	Aug	Sep	Oct	Nov	Dec	Jan	Feb	Mar	Apr	May	Jun	FY13 Avg.	FY13 Plcmt Avg As % of Total
Juvenile Correctional Facility	341	328	326	331	323	318	305	305	312	317	331	331	322.3	21.7%
Detention	149	174	170	152	157	144	170	169	172	157	155	161	160.8	10.8%
Facility/Other ¹	80	81	85	84	96	101	95	87	81	91	84	68	86.1	5.8%
Foster Home	26	27	28	29	33	31	24	25	25	27	25	20	26.7	10.8%
Home/Relative	336	336	332	330	316	338	306	284	272	253	300	310	309.4	5.8%
Juvenile Justice Foster Care	36	39	43	47	49	40	40	48	46	49	45	42	43.7	1.8%
AWOL	90	94	88	82	89	96	96	98	103	100	84	94	92.8	6.3%
Psychiatric Residential Treatment Center	33	35	38	36	38	44	44	32	25	26	25	21	33.1	2.2%
Not Reported	37	6	4	29	11	11	6	3	8	5	9	8	11.4	0.8%
Youth Residential Center II	403	381	394	403	417	386	402	416	407	418	388	363	398.2	26.8%
Total Custody Population	1,531	1,501	1,508	1,523	1,529	1,509	1,488	1,467	1,451	1,443	1,446	1,418	1484.5	100.0%
% Change from Previous Year	-1.92%	-3.84%	-2.90%	-2.37%	-1.99%	-4.13%	-5.40%	-7.62%	-8.86%	-9.53%	-9.96%	-12.03%	-5.88%	

FY13 Average Placement Setting Distribution for JJA Custody Youth



¹ Includes Emergency Shelter, Maternity or Substance Abuse Residential Treatment, Hospital, Independent Living

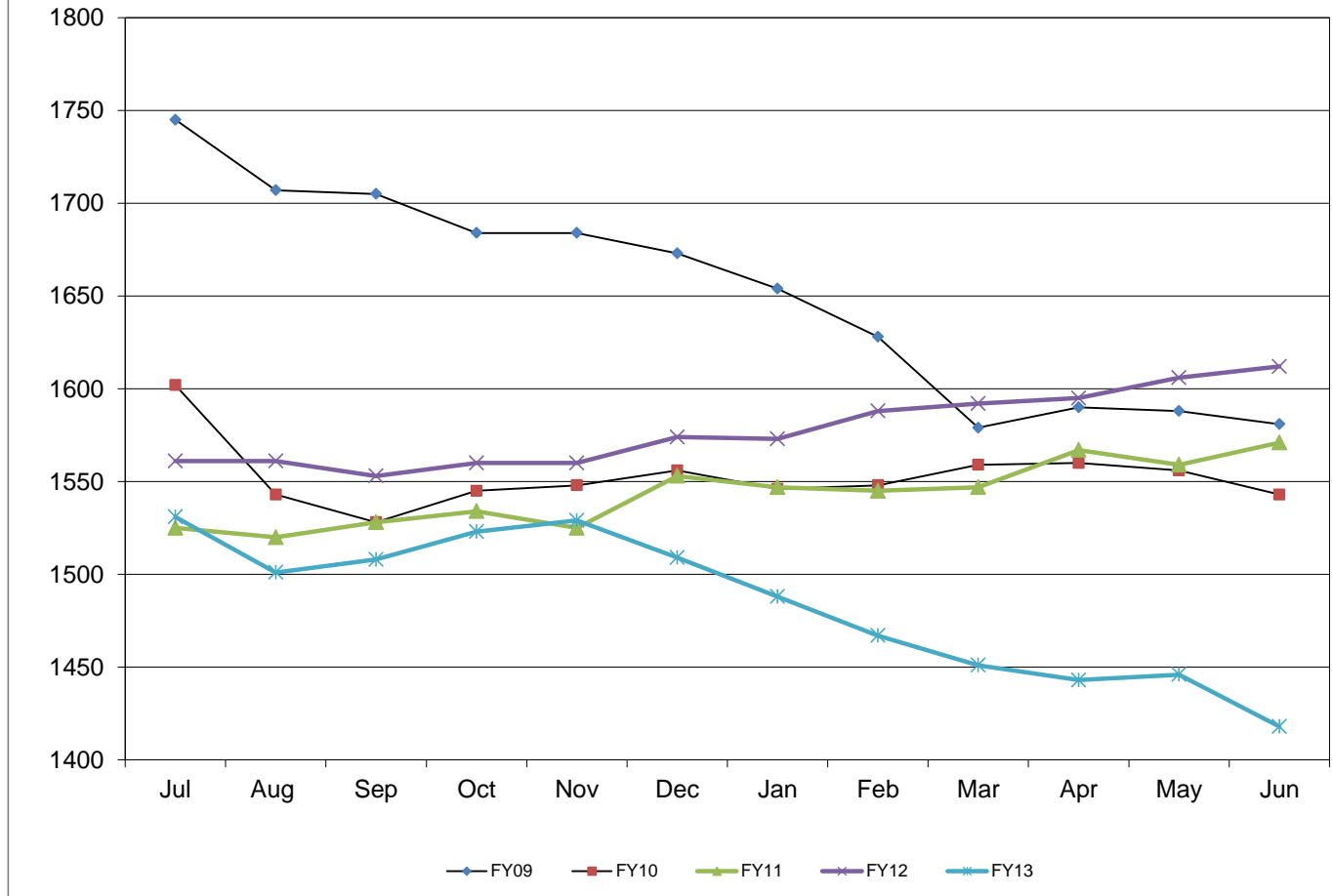
Fiscal Year Flashback

	FY09 Mo. Avg	FY10 Mo. Avg	FY11 Mo. Avg	FY12 Mo. Avg
Juvenile Correctional Facility	348.7	326.5	322.8	337
Detention	167.7	157.3	161.3	158.1
Facility/Other*	97.1	100.7	106.2	92.2
Foster Home	27.3	20.2	26.3	32.4
Home/Relative	402.3	346.3	320.6	317.4
AWOL	103.0	83.8	90.3	87.2
Psychiatric Residential Treatment Center	75.6	76.5	65.3	43.2
Not Reported	25.4	11.9	28.6	60.8
Youth Residential Center I	2.8	1.8	2.8	0
Youth Residential Center II	393.4	402.0	377.3	405.3
Total Custody Population	1651.5	1553.7	1542.4	1577.9

**Statewide Month End Population: Placements for Youth in the Custody of JJA on the Last Day of Each Month
Placement Detail**

Placements	Jul	Aug	Sep	Oct	Nov	Dec	Jan	Feb	Mar	Apr	May	Jun	Avg	Avg as a %
Community Integration Program	8	6	8	9	9	7	4	3	4	5	6	10	6.6	0.44%
Juvenile Justice Foster Care	36	39	43	47	49	40	40	48	46	49	45	42	43.7	3%
Detention	149	174	170	152	157	144	170	169	172	157	155	161	160.8	11%
Emergency Foster Care	0	0	0	0	0	0	0	0	0	0	0	0	0.0	0%
Emergency Shelter	3	2	4	4	4	6	6	4	3	7	0	3	3.8	0.26%
Family Resource Home	1	1	2	1	1	1	0	0	0	0	0	0	0.6	0.04%
Home	327	327	323	320	303	328	298	276	262	244	293	302	300.3	20%
Hospital	7	4	1	4	1	7	6	5	3	3	3	1	3.8	0.25%
Juvenile Correctional Facility	341	328	326	331	323	318	305	305	312	317	331	331	322.3	22%
Kinship/Non-Related Kin Care	2	3	2	3	3	3	2	2	3	3	3	4	2.8	0.19%
Not Reported	37	6	4	29	11	11	6	3	8	5	9	8	11.4	1%
Psychiatric Residential Treatment Facility	33	35	38	36	38	44	44	32	25	26	25	21	33.1	2%
Relative Placement	7	6	7	7	10	10	6	6	7	6	4	4	6.7	0.45%
Residential Drug/Alcohol Treatment	1	3	1	6	7	7	3	6	2	2	5	3	3.8	0.26%
Residential Maternity Group Home	6	5	4	1	1	1	0	1	2	3	4	4	2.7	0.18%
Runaway/ AWOL	90	94	88	82	89	96	96	98	103	100	84	94	92.8	6%
Sanction House	2	3	2	0	0	0	0	0	1	1	0	1	0.8	0.06%
Specialized Family Resource Home	11	10	14	15	17	12	12	11	11	12	8	7	11.7	1%
Therapeutic Foster Care	9	12	10	13	15	15	12	13	12	12	13	9	12.1	1%
Transitional Living Program	58	62	67	60	74	73	76	69	68	73	70	50	66.7	4%
Youth Residential Center II	403	381	394	403	417	386	402	416	407	418	388	363	398.2	27%
Total	1,531	1,501	1,508	1,523	1,529	1,509	1,488	1,467	1,451	1,443	1,446	1,418	1,485	100%

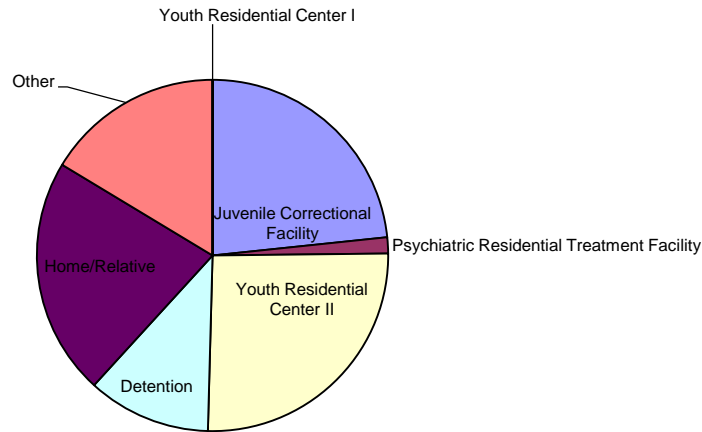
Statewide JJA Custody Month End Population



Statewide Month End Population: Placements for Youth in the Custody of JJA on June 30, 2013 by Judicial District

	Judicial District																															Tot	%
	1	2	3	4	5	6	7	8	9	10	11	12	13	14	16	15/17/23	18	19	20	21	22	24	25	26	27	28	29	30	31				
Juvenile Correctional Facility	13	4	35	2	6	3	8	14	5	16	5	0	5	7	8	6	72	6	6	3	9	1	14	3	6	12	54	5	3	331	23.34%		
Detention	3	2	14	2	3	3	3	4	1	14	5	2	4	4	2	2	36	1	1	0	0	0	2	1	2	5	41	2	2	161	11.35%		
Facility/Other	4	0	4	1	1	5	0	3	0	1	2	0	5	0	1	1	13	0	1	2	0	0	2	1	2	3	15	0	1	68	4.80%		
Foster Home	0	2	2	0	1	1	1	0	0	0	0	1	0	1	0	2	2	0	0	0	0	0	0	1	1	5	0	0	20	1.41%			
Home/Relative	21	5	20	3	6	1	3	7	1	15	10	3	2	15	11	7	55	9	8	3	3	3	15	6	4	14	53	1	6	310	21.86%		
Juvenile Justice Foster Care	2	0	8	1	0	0	0	0	0	2	0	0	2	0	2	4	3	0	4	1	0	0	3	1	4	0	5	0	0	42	2.96%		
AWOL	3	0	3	3	1	2	2	1	1	5	3	0	2	1	0	1	24	0	0	0	1	1	1	3	0	7	29	0	0	94	6.63%		
Psychiatric Residential Treatment Facility	0	0	0	0	1	0	0	1	1	2	0	0	0	2	0	0	0	2	3	1	1	2	0	1	1	1	1	1	0	21	1.48%		
Youth Residential Center II	8	3	21	6	8	9	8	19	2	19	19	3	7	18	9	16	69	10	13	2	4	2	10	5	13	14	37	6	3	363	25.60%		
Not Reported	0	1	0	0	0	2	0	0	0	1	0	0	0	0	0	0	3	0	1	0	0	0	0	0	0	0	0	0	0	8	0.56%		
Total	54	17	107	18	27	26	25	49	11	75	44	9	27	48	33	39	277	28	37	12	18	9	47	22	33	61	235	15	15	1418	100.0%		

Month End Placement Distribution



Length of Stay for Youth Whose Placement Type Ended During the FY 2013 Month

		Jul	Aug	Sep	Oct	Nov	Dec	Jan	Feb	Mar	Apr	May	Jun	Avg
PRTF	# placements	9	9	8	14	7	5	10	14	15	5	11	10	10
	Average # days	147.8	151.6	131.3	108.7	133.6	111.0	108.7	116.0	123.5	129.0	171.5	118.0	129.2
	Median # days	90.0	140.5	45.0	87.5	112.0	86.0	87.0	88.5	91.5	90.0	185.0	69.0	89.3
YRCII	# placements	139	147	97	122	80	147	100	79	137	81	146	128	117
	Average # days	89.7	101.5	70.3	98.2	98.9	111.0	96.5	75.6	91.3	81.0	133.1	119.0	97.2
	Median # days	90.0	88.0	59.5	92.0	87.5	98.0	75.5	63.0	83.0	45.0	108.0	91.0	87.8

Length of Stay for Youth in Respective Placement Type on the Last Day of the Month During FY 2013

		Jul	Aug	Sep	Oct	Nov	Dec	Jan	Feb	Mar	Apr	May	Jun	Avg.
PRTF	# youth	33	35	38	36	38	44	44	32	25	26	25	21	33
	Average # days	109.8	91.9	84.4	88.1	87.7	93.7	108.0	126.8	117.6	115.0	76.5	68.0	97.3
	Median # days	75.0	74.0	80.0	67.5	81.0	68.0	85.0	86.0	103.0	54.0	38.5	42.0	74.5
YRCII	# youth	403	381	395	403	417	386	403	416	407	418	388	363	398
	Average # days	82.9	79.8	89.2	86.1	92.7	89.1	91.6	98.2	100.4	111.0	76.5	98.9	91.4
	Median # days	74.0	75.0	81.5	79.0	82.0	77.0	84.0	85.0	74.0	84.0	78.0	73.0	78.5

