

data as of 7/9/2014

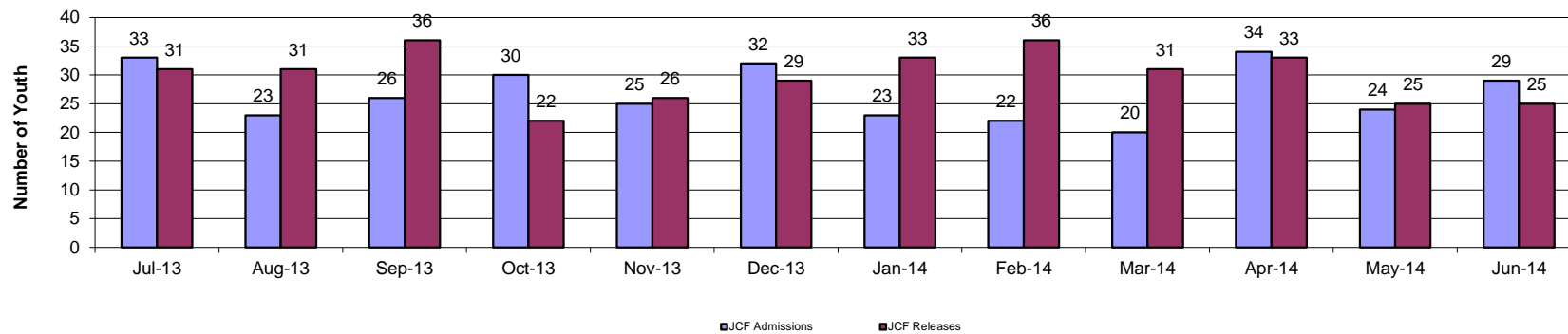
Juvenile Correctional Facility Population Activity Fiscal Year 2014

There were 16% more admissions than releases during the month of June. The statewide month end population for June 2014 (293) is 11% less than the month end population for June 2013 (330).

Statewide JCF Activity Summary

	Jul-13	Aug-13	Sep-13	Oct-13	Nov-13	Dec-13	Jan-14	Feb-14	Mar-14	Apr-14	May-14	Jun-14	Total	FY14 Avg
JCF Admissions	33	23	26	30	25	32	23	22	20	34	24	29	321	26.8
JCF Releases	31	31	36	22	26	29	33	36	31	33	25	25	358	29.8
Month End Population	332	324	314	322	321	324	314	300	289	290	289	293	N/A	309.3

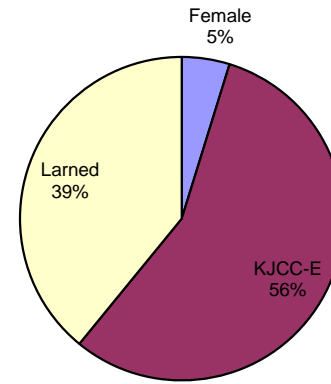
Statewide JCF Admissions and Releases FY14



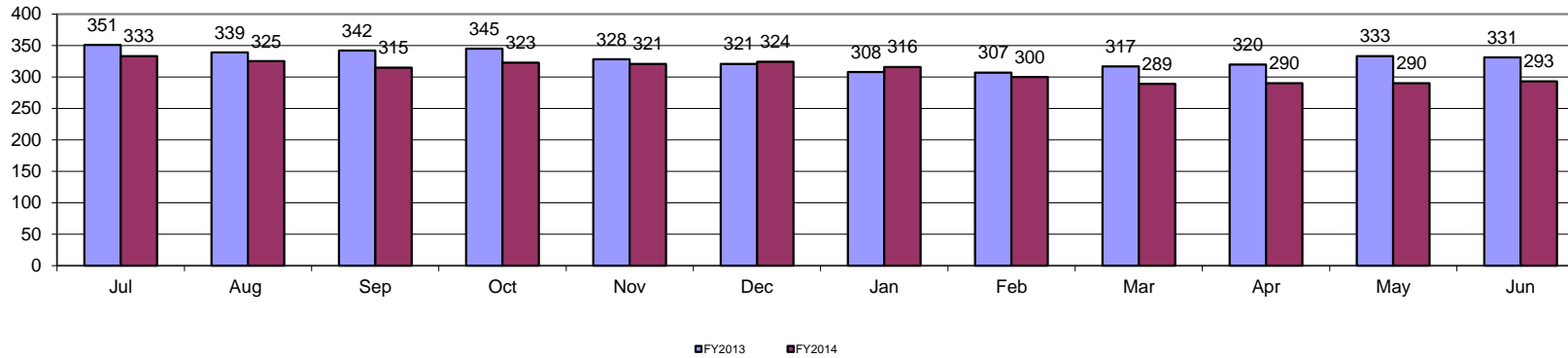
Statewide JCF Month End Population

The average month end population for FY14 (309) is 6% lower than the average month end population during FY13 (328).

**FY14 Average:
Youth JCF Placement Distribution**



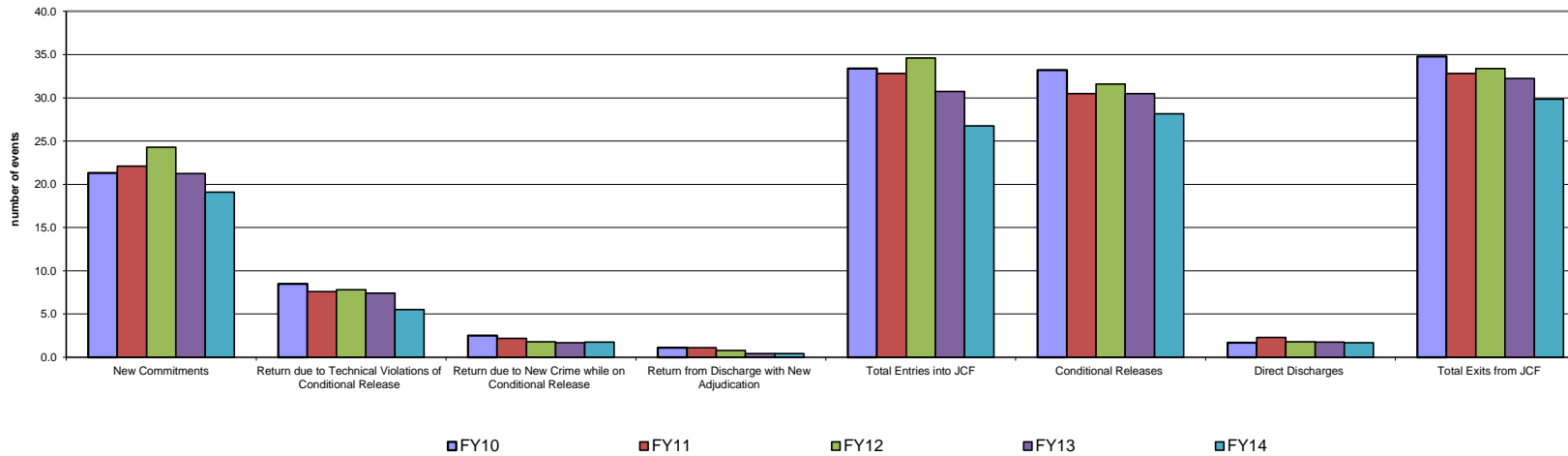
Statewide Juvenile Correctional Facility Month End Population



**Fiscal Year Flashback
Census Events: Average Monthly Frequency**

	FY06	FY07	FY08	FY09	FY10	FY11	FY12	FY13	FY14
New Commitments	26.4	30.7	25.8	23.7	21.3	22.1	24.3	21.3	19.1
Return due to Technical Violations of Conditional Release	12.5	11.2	8.7	11.0	8.5	7.6	7.8	7.4	5.5
Return due to New Crime while on Conditional Release	1.4	2.5	1.8	1.8	2.5	2.2	1.8	1.7	1.8
Return from Discharge with New Adjudication	0.4	0.3	0.7	1.0	1.1	1.1	0.8	0.4	0.4
Total Entries into JCF	40.8	44.6	37.0	37.5	33.4	32.8	34.6	30.8	26.8
Conditional Releases	47.4	38.2	40.5	37.7	33.2	30.5	31.6	30.5	28.2
Direct Discharges	1.1	1.8	1.5	1.6	1.7	2.3	1.8	1.8	1.7
Total Exits from JCF	48.5	40.0	42.0	39.3	34.8	32.8	33.4	32.3	29.8

Statewide Average JCF Census # Events Across Years



JCF Detail: Statewide

Youth Entering All JCF	Jul-13	Aug-13	Sep-13	Oct-13	Nov-13	Dec-13	Jan-14	Feb-14	Mar-14	Apr-14	May-14	Jun-14	Total	Monthly Avg
New Commitments	24	17	19	18	19	23	16	14	12	26	16	25	229	19.1
Return due to Technical Violations of Conditional Release	4	5	3	8	6	8	6	6	5	6	6	3	66	5.5
Return due to New Crime while on Conditional Release	5	0	2	3	0	1	1	2	2	2	2	1	21	1.8
Return from Discharge with New Adjudication	0	1	2	1	0	0	0	0	1	0	0	0	5	0.4
Total Entries into JCF	33	23	26	30	25	32	23	22	20	34	24	29	321	26.8
Youth Exiting Facility	Jul-13	Aug-13	Sep-13	Oct-13	Nov-13	Dec-13	Jan-14	Feb-14	Mar-14	Apr-14	May-14	Jun-14	Total	Monthly Avg
Conditional Releases	30	30	32	21	20	29	32	35	31	30	24	24	338	28.2
Direct Discharges	1	1	4	1	6	0	1	1	0	3	1	1	20	1.7
Total Exits from Facility	31	31	36	22	26	29	33	36	31	33	25	25	358	29.8
Month End Population	Jul-13	Aug-13	Sep-13	Oct-13	Nov-13	Dec-13	Jan-14	Feb-14	Mar-14	Apr-14	May-14	Jun-14	Total	Monthly Avg
Total # Youth placed in JCF on last day of the month	332	324	314	322	321	324	314	300	289	290	289	293		309.3

JCF Detail: Females

Youth Entering Females	Jul-13	Aug-13	Sep-13	Oct-13	Nov-13	Dec-13	Jan-14	Feb-14	Mar-14	Apr-14	May-14	Jun-14	Total	Monthly Avg
New Commitments	2	3	4	0	3	2	1	0	1	3	2	2	23	1.9
Return due to Technical Violations of Conditional Release	1	0	0	0	1	0	1	0	0	1	0	0	4	0.3
Return due to New Crime while on Conditional Release	0	0	0	0	0	0	0	0	0	0	0	0	0	0.0
Return from Discharge with New Adjudication	0	0	0	0	0	0	0	0	0	0	0	0	0	0.0
Transferring In from another JCF (N/A)	0	0	0	0	0	0	0	0	0	0	0	0	0	0.0
Total Entries into JCF	3	3	4	0	4	2	2	0	1	4	2	2	27	2.3
Youth Exiting Facility	Jul-13	Aug-13	Sep-13	Oct-13	Nov-13	Dec-13	Jan-14	Feb-14	Mar-14	Apr-14	May-14	Jun-14	Total	Monthly Avg
Transferred out to another JCF (N/A)	0	0	0	0	0	0	0	0	0	0	0	0	0	N/A
Conditional Releases	1	4	3	1	2	2	5	2	4	2	2	1	29	2.4
Direct Discharges	0	0	0	0	1	0	0	0	0	1	0	0	2	0.2
Total Exits from Facility	1	4	3	1	3	2	5	2	4	3	2	1	31	2.6
Month End Population	Jul-13	Aug-13	Sep-13	Oct-13	Nov-13	Dec-13	Jan-14	Feb-14	Mar-14	Apr-14	May-14	Jun-14	Total	Monthly Avg
Total # Youth placed in JCF on last day of the month	18	17	18	17	18	18	15	13	10	11	11	12		14.8

JCF Detail: Kansas Juvenile Correctional Complex

Youth Entering KJCC	Jul-13	Aug-13	Sep-13	Oct-13	Nov-13	Dec-13	Jan-14	Feb-14	Mar-14	Apr-14	May-14	Jun-14	Total	Monthly Avg
New Commitments	22	14	14	18	16	21	15	14	11	23	14	23	205	17.1
Return due to Technical Violations of Conditional Release	3	5	3	8	5	8	5	6	5	5	6	3	62	5.2
Return due to new crime while on conditional release	5	0	2	3	0	1	1	2	2	2	2	1	21	1.8
Return from Discharge with New Adjudication	0	1	2	1	0	0	0	0	1	0	0	0	5	0.4
Transferring In from another JCF	0	0	0	0	1	0	1	0	0	0	0	1	3	0.3
Total Entries into JCF	30	20	21	30	22	30	22	22	19	30	22	28	296	24.7
Youth Exiting Facility	Jul-13	Aug-13	Sep-13	Oct-13	Nov-13	Dec-13	Jan-14	Feb-14	Mar-14	Apr-14	May-14	Jun-14	Total	Monthly Avg
Transferred out to another JCF	11	9	6	8	4	10	10	7	10	0	11	8	94	7.8
Conditional Releases	20	16	20	15	12	18	18	24	22	14	13	19	211	17.6
Direct Discharges	0	1	4	1	2	0	1	1	0	1	1	1	13	1.1
Total Exits from Facility	31	26	30	24	18	28	29	32	32	15	25	28	318	26.5
Month End Population	Jul-13	Aug-13	Sep-13	Oct-13	Nov-13	Dec-13	Jan-14	Feb-14	Mar-14	Apr-14	May-14	Jun-14	Total	Monthly Avg
Total # Youth placed in JCF on last day of the month	187	181	172	178	182	184	177	167	154	169	166	166		173.6

JCF Detail: Larned Juvenile Correctional Facility

Youth Entering Larned Facility	Jul-13	Aug-13	Sep-13	Oct-13	Nov-13	Dec-13	Jan-14	Feb-14	Mar-14	Apr-14	May-14	Jun-14	Total	Monthly Avg
New Commitments	0	0	1	0	0	0	0	0	0	0	0	0	1	0.1
Return due to Technical Violations of Conditional Release	0	0	0	0	0	0	0	0	0	0	0	0	0	0.0
Return due to New Crime while on Conditional Release	0	0	0	0	0	0	0	0	0	0	0	0	0	0.0
Return from Discharge with New Adjudication	0	0	0	0	0	0	0	0	0	0	0	0	0	0.0
Transferring In from another JCF	11	9	6	8	4	10	10	7	10	0	11	8	94	7.8
Total Entries into JCF	11	9	7	8	4	10	10	7	10	0	11	8	95	7.9
Youth Exiting Facility	Jul-13	Aug-13	Sep-13	Oct-13	Nov-13	Dec-13	Jan-14	Feb-14	Mar-14	Apr-14	May-14	Jun-14	Total	Monthly Avg
Transferred out to another JCF	0	0	0	0	1	0	1	0	0	0	0	1	3	0.3
Conditional Releases	9	10	9	5	6	9	9	9	5	14	9	4	98	8.2
Direct Discharges	1	0	0	0	3	0	0	0	0	1	0	0	5	0.4
Total Exits from Facility	10	10	9	5	10	9	10	9	5	15	9	5	106	8.8
Month End Population	Jul-13	Aug-13	Sep-13	Oct-13	Nov-13	Dec-13	Jan-14	Feb-14	Mar-14	Apr-14	May-14	Jun-14	Total	Monthly Avg
Total # Youth placed in JCF on last day of the month	127	126	124	127	121	122	122	120	125	110	112	115		120.9

JCF Month End Summary Management Information
For Youth Placed in JCF on Last Day of the Month in FY14

Statewide Summary

Fiscal Year 2014 Month End

Length of Stay & Age	Jul	Aug	Sep	Oct	Nov	Dec	Jan	Feb	Mar	Apr	May	Jun
Average Months for all Youth	9.0	9.1	9.3	9.3	9.5	9.4	9.8	10.0	10.4	10.5	10.6	10.1
Median Months for all Youth	5.7	6.2	6.5	6.6	7.0	6.9	7.4	7.9	8.4	8.3	8.1	7.7
Average Age All Youth	17.8	17.8	17.9	17.9	17.9	17.8	17.9	17.9	18.0	18.0	18.0	17.8
Median Age All Youth	17.9	17.9	18.0	18.0	18.0	17.9	17.9	17.9	18.1	18.0	18.0	17.8

Female Summary

Fiscal Year 2014 Month End

Length of Stay & Age	Jul	Aug	Sep	Oct	Nov	Dec	Jan	Feb	Mar	Apr	May	Jun
Average Months in JCF	7.5	7.6	6.5	7.9	7.7	7.3	8.5	10.1	8.6	6.3	6.5	6.6
Median Months In JCF	4.2	3.6	3.4	5.0	4.8	4.9	5.5	7.3	7.4	3.8	2.9	2.2
Average Age	17.9	17.8	17.7	17.8	17.7	17.3	17.5	17.8	17.5	16.9	16.8	16.9
Median Age	18.3	18.4	17.7	17.8	17.7	17.5	17.8	18.1	18.1	16.8	16.9	17.0

KJCC Summary

Fiscal Year 2014 Month End

Length of Stay & Age	Jul	Aug	Sep	Oct	Nov	Dec	Jan	Feb	Mar	Apr	May	Jun
Average Months in JCF	8.6	8.9	9.4	9.0	8.9	8.9	9.6	9.6	10.2	9.7	9.8	9.3
Median Months In JCF	4.9	5.3	6.2	5.9	5.6	6.1	7.1	7.2	7.6	5.9	6.0	5.9
Average Age	17.8	17.8	17.9	17.9	17.9	18.0	18.0	18.1	18.3	18.1	18.1	17.9
Median Age	18.0	18.0	18.0	18.1	18.1	18.1	18.1	18.1	18.3	18.1	18.0	17.8

LJCF Summary

Fiscal Year 2014 Month End

Length of Stay & Age	Jul	Aug	Sep	Oct	Nov	Dec	Jan	Feb	Mar	Apr	May	Jun
Average Months in JCF	9.8	9.4	9.5	10.0	10.8	10.4	10.3	10.6	10.8	12.2	12.2	11.7
Median Months In JCF	7.2	6.9	7.5	8.2	8.9	8.9	9.2	9.1	9.3	10.3	10.7	11.0
Average Age	17.8	17.8	17.8	17.8	17.8	17.8	17.7	17.7	17.8	17.9	17.9	17.9
Median Age	17.8	17.9	17.8	17.8	17.9	17.7	17.7	17.8	17.8	17.9	18.0	17.9

Age of All JCF Youth June 2014 Month End Population

