

**Juvenile Correctional Facility Population Activity**  
Fiscal Year 2017

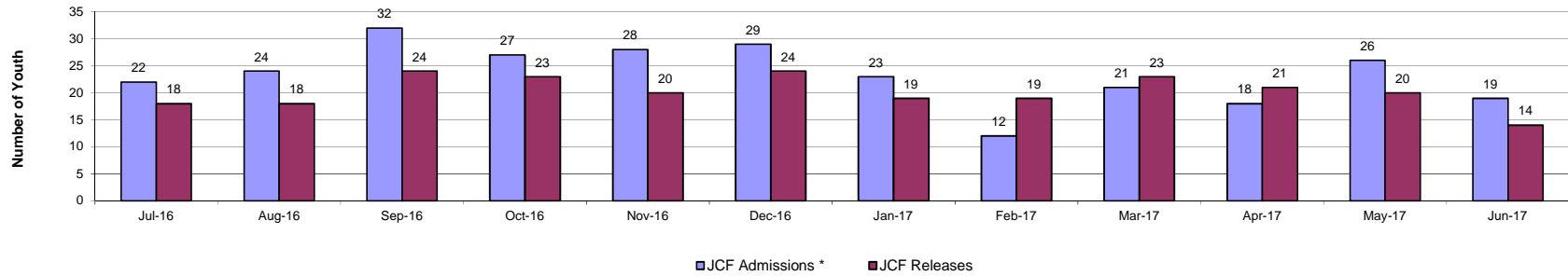
Releases in FY 2017 are Less than Admissions by 13.5%

**Statewide JCF Activity Summary**

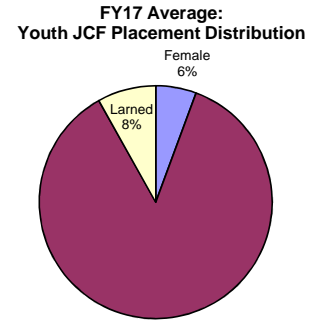
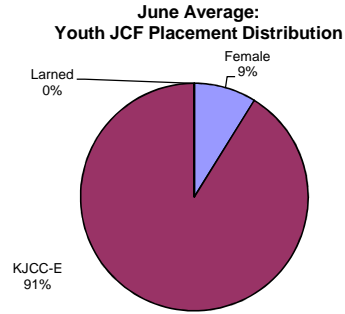
	Jul-16	Aug-16	Sep-16	Oct-16	Nov-16	Dec-16	Jan-17	Feb-17	Mar-17	Apr-17	May-17	Jun-17	Total	FY17 Avg	FY16 Avg
JCF Admissions *	22	24	32	27	28	29	23	12	21	18	26	19	281	23.4	26.0
JCF Releases	18	18	24	23	20	24	19	19	23	21	20	14	243	20.3	20.0
<b>Month End Population</b>	<b>224</b>	<b>225</b>	<b>223</b>	<b>217</b>	<b>216</b>	<b>213</b>	<b>211</b>	<b>204</b>	<b>203</b>	<b>199</b>	<b>206</b>	<b>209</b>	<b>2550</b>	<b>212.5</b>	<b>230.6</b>

\*Admissions consist of "raw" admissions, and includes transfers from one facility to another, that do not increase the total population.

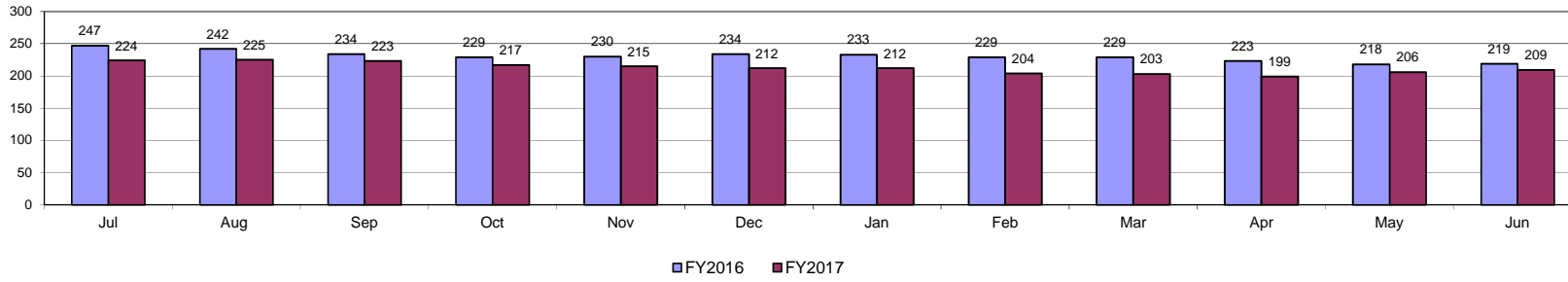
**Statewide JCF Admissions and Releases FY17**



Statewide JCF Month End Population



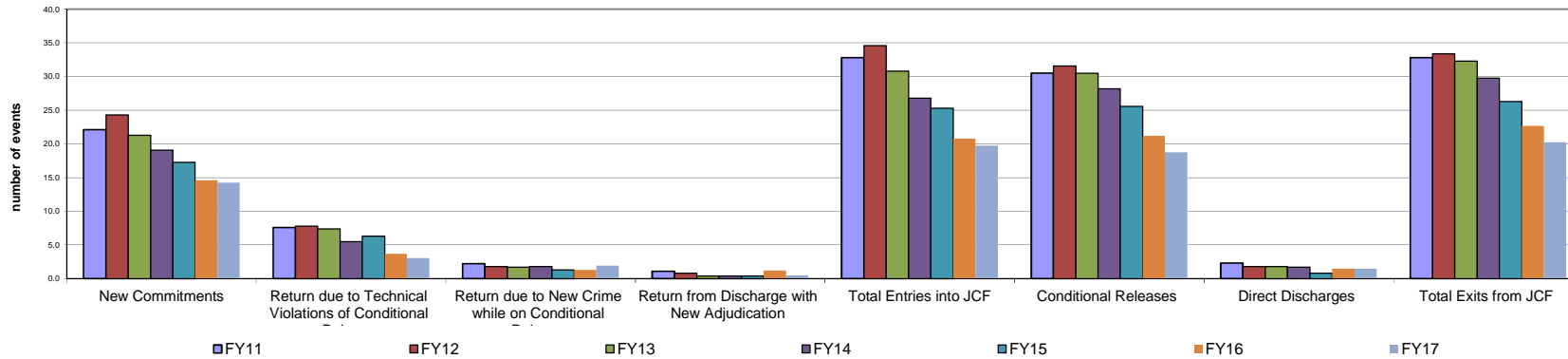
Statewide Juvenile Correctional Facility Month End Population



**Fiscal Year Flashback  
Census Events: Average Monthly Frequency**

	FY08	FY09	FY10	FY11	FY12	FY13	FY14	FY15	FY16	FY17
New Commitments	25.8	23.7	21.3	22.1	24.3	21.3	19.1	17.3	14.6	14.3
Return due to Technical Violations of Conditional Release	8.7	11.0	8.5	7.6	7.8	7.4	5.5	6.3	3.7	3.1
Return due to New Crime while on Conditional Release	1.8	1.8	2.5	2.2	1.8	1.7	1.8	1.3	1.3	1.9
Return from Discharge with New Adjudication	0.7	1.0	1.1	1.1	0.8	0.4	0.4	0.4	1.2	0.5
<b>Total Entries into JCF</b>	<b>37.0</b>	<b>37.5</b>	<b>33.4</b>	<b>32.8</b>	<b>34.6</b>	<b>30.8</b>	<b>26.8</b>	<b>25.3</b>	<b>20.8</b>	<b>19.8</b>
Conditional Releases	40.5	37.7	33.2	30.5	31.6	30.5	28.2	25.6	21.2	18.8
Direct Discharges	1.5	1.6	1.7	2.3	1.8	1.8	1.7	0.8	1.5	1.5
<b>Total Exits from JCF</b>	<b>42.0</b>	<b>39.3</b>	<b>34.8</b>	<b>32.8</b>	<b>33.4</b>	<b>32.3</b>	<b>29.8</b>	<b>26.3</b>	<b>22.7</b>	<b>20.3</b>

**Statewide Average JCF Census # Events Across Years**



JCF Detail: Statewide

<b>Youth Entering All JCF</b>	<b>Jul-16</b>	<b>Aug-16</b>	<b>Sep-16</b>	<b>Oct-16</b>	<b>Nov-16</b>	<b>Dec-16</b>	<b>Jan-17</b>	<b>Feb-17</b>	<b>Mar-17</b>	<b>Apr-17</b>	<b>May-17</b>	<b>Jun-17</b>	<b>Total</b>	<b>Monthly Avg</b>
New Commitments	17	19	15	11	15	18	12	6	14	11	21	12	171	14.3
Return due to Technical Violations of Conditional Release	3	1	2	5	2	2	5	1	5	6	3	2	37	3.1
Return due to New Crime while on Conditional Release	1	1	2	1	2	4	1	3	2	1	1	4	23	1.9
Return from Discharge with New Adjudication	0	0	2	0	0	0	0	2	0	0	1	1	6	0.5
<b>Total Entries into JCF</b>	<b>21</b>	<b>21</b>	<b>21</b>	<b>17</b>	<b>19</b>	<b>24</b>	<b>18</b>	<b>12</b>	<b>21</b>	<b>18</b>	<b>26</b>	<b>19</b>	<b>237</b>	<b>19.8</b>
<b>Youth Exiting Facility</b>	<b>Jul-16</b>	<b>Aug-16</b>	<b>Sep-16</b>	<b>Oct-16</b>	<b>Nov-16</b>	<b>Dec-16</b>	<b>Jan-17</b>	<b>Feb-17</b>	<b>Mar-17</b>	<b>Apr-17</b>	<b>May-17</b>	<b>Jun-17</b>	<b>Total</b>	<b>Monthly Avg</b>
Conditional Releases	18	17	20	21	19	23	18	17	21	19	19	13	225	18.8
Direct Discharges	0	1	4	2	1	1	1	2	2	2	1	1	18	1.5
<b>Total Exits from Facility</b>	<b>18</b>	<b>18</b>	<b>24</b>	<b>23</b>	<b>20</b>	<b>24</b>	<b>19</b>	<b>19</b>	<b>23</b>	<b>21</b>	<b>20</b>	<b>14</b>	<b>243</b>	<b>20.3</b>
<b>Month End Population</b>	<b>Jul-16</b>	<b>Aug-16</b>	<b>Sep-16</b>	<b>Oct-16</b>	<b>Nov-16</b>	<b>Dec-16</b>	<b>Jan-17</b>	<b>Feb-17</b>	<b>Mar-17</b>	<b>Apr-17</b>	<b>May-17</b>	<b>Jun-17</b>	<b>Total</b>	<b>Monthly Avg</b>
Total # Youth placed in JCF on last day of the month	224	225	223	216	215	213	211	204	203	199	206	209	2548	212.3

JCF Detail: Females

<b>Youth Entering Females</b>	<b>Jul-16</b>	<b>Aug-16</b>	<b>Sep-16</b>	<b>Oct-16</b>	<b>Nov-16</b>	<b>Dec-16</b>	<b>Jan-17</b>	<b>Feb-17</b>	<b>Mar-17</b>	<b>Apr-17</b>	<b>May-17</b>	<b>Jun-17</b>	<b>Total</b>	<b>Monthly Avg</b>
New Commitments	2	0	0	0	2	1	2	0	0	1	3	2	13	1.1
Return due to Technical Violations of Conditional Release	0	1	1	2	0	1	1	0	0	1	1	1	9	0.8
Return due to New Crime while on Conditional Release	0	1	1	1	0	1	0	0	0	1	0	1	6	0.5
Return from Discharge with New Adjudication	0	0	0	0	0	0	0	1	0	0	0	0	1	0.1
Transferring In from another JCF (N/A)	0	0	0	0	0	0	0	0	0	0	0	0	0	0.0
<b>Total Entries into JCF</b>	<b>2</b>	<b>2</b>	<b>2</b>	<b>3</b>	<b>2</b>	<b>3</b>	<b>3</b>	<b>1</b>	<b>0</b>	<b>3</b>	<b>4</b>	<b>4</b>	<b>29</b>	<b>2.4</b>
<b>Youth Exiting Facility</b>	<b>Jul-16</b>	<b>Aug-16</b>	<b>Sep-16</b>	<b>Oct-16</b>	<b>Nov-16</b>	<b>Dec-16</b>	<b>Jan-17</b>	<b>Feb-17</b>	<b>Mar-17</b>	<b>Apr-17</b>	<b>May-17</b>	<b>Jun-17</b>	<b>Total</b>	<b>Monthly Avg</b>
Transferred out to another JCF (N/A)	0	0	0	0	0	0	0	0	0	0	0	0	0	N/A
Conditional Releases	2	0	3	1	2	2	1	2	3	0	0	0	16	1.3
Direct Discharges	0	0	0	0	0	0	0	0	0	0	0	0	0	0.0
<b>Total Exits from Facility</b>	<b>2</b>	<b>0</b>	<b>3</b>	<b>1</b>	<b>2</b>	<b>2</b>	<b>1</b>	<b>2</b>	<b>3</b>	<b>0</b>	<b>0</b>	<b>0</b>	<b>16</b>	<b>1.3</b>
<b>Month End Population</b>	<b>Jul-16</b>	<b>Aug-16</b>	<b>Sep-16</b>	<b>Oct-16</b>	<b>Nov-16</b>	<b>Dec-16</b>	<b>Jan-17</b>	<b>Feb-17</b>	<b>Mar-17</b>	<b>Apr-17</b>	<b>May-17</b>	<b>Jun-17</b>	<b>Total</b>	<b>Monthly Avg</b>
Total # Youth placed in JCF on last day of the month	10	12	11	13	13	14	16	15	12	13	17	21	167	13.9

JCF Detail: Kansas Juvenile Correctional Complex Males

<b>Youth Entering KJCC</b>	<b>Jul-16</b>	<b>Aug-16</b>	<b>Sep-16</b>	<b>Oct-16</b>	<b>Nov-16</b>	<b>Dec-16</b>	<b>Jan-17</b>	<b>Feb-17</b>	<b>Mar-17</b>	<b>Apr-17</b>	<b>May-17</b>	<b>Jun-17</b>	<b>Total</b>	<b>Monthly Avg</b>
New Commitments	15	19	15	11	13	17	10	6	14	10	18	10	158	13.2
Return due to Technical Violations of Conditional Release	3	0	1	3	2	1	4	1	5	5	2	1	28	2.3
Return due to new crime while on conditional release	1	0	1	0	2	3	1	3	2	0	1	3	17	1.4
Return from Discharge with New Adjudication	0	0	1	0	0	0	0	1	0	0	1	1	4	0.3
Transferring In from another JCF	6	3	11	10	9	8	5	0	0	0	0	0	52	4.3
<b>Total Entries into JCF</b>	<b>25</b>	<b>22</b>	<b>29</b>	<b>24</b>	<b>26</b>	<b>29</b>	<b>20</b>	<b>11</b>	<b>21</b>	<b>15</b>	<b>22</b>	<b>15</b>	<b>259</b>	<b>21.6</b>
<b>Youth Exiting Facility</b>	<b>Jul-16</b>	<b>Aug-16</b>	<b>Sep-16</b>	<b>Oct-16</b>	<b>Nov-16</b>	<b>Dec-16</b>	<b>Jan-17</b>	<b>Feb-17</b>	<b>Mar-17</b>	<b>Apr-17</b>	<b>May-17</b>	<b>Jun-17</b>	<b>Total</b>	<b>Monthly Avg</b>
Transferred out to another JCF	2	0	0	0	0	0	0	0	0	0	0	0	2	0.2
Conditional Releases	11	13	15	14	15	20	13	15	18	17	19	1	171	14.3
Direct Discharges	0	1	4	2	1	1	1	2	2	2	1	13	30	2.5
<b>Total Exits from Facility</b>	<b>13</b>	<b>14</b>	<b>19</b>	<b>16</b>	<b>16</b>	<b>21</b>	<b>14</b>	<b>17</b>	<b>20</b>	<b>19</b>	<b>20</b>	<b>14</b>	<b>203</b>	<b>16.9</b>
<b>Month End Population</b>	<b>Jul-16</b>	<b>Aug-16</b>	<b>Sep-16</b>	<b>Oct-16</b>	<b>Nov-16</b>	<b>Dec-16</b>	<b>Jan-17</b>	<b>Feb-17</b>	<b>Mar-17</b>	<b>Apr-17</b>	<b>May-17</b>	<b>Jun-17</b>	<b>Total</b>	<b>Monthly Avg</b>
Total # Youth placed in JCF on last day of the month	139	147	161	169	180	188	195	189	191	186	189	188	2122	176.8

JCF Detail: Larned Juvenile Correctional Facility

<b>Youth Entering Larned Facility</b>	<b>Jul-16</b>	<b>Aug-16</b>	<b>Sep-16</b>	<b>Oct-16</b>	<b>Nov-16</b>	<b>Dec-16</b>	<b>Jan-17</b>	<b>Feb-17</b>	<b>Mar-17</b>	<b>Apr-17</b>	<b>May-17</b>	<b>Jun-17</b>	<b>Total</b>	<b>Monthly Avg</b>
New Commitments	0	0	0	0	0	0	0	0	0	0	0	0	0	0.0
Return due to Technical Violations of Conditional Release	0	0	0	0	0	0	0	0	0	0	0	0	0	0.0
Return due to New Crime while on Conditional Release	0	0	0	0	0	0	0	0	0	0	0	0	0	0.0
Return from Discharge with New Adjudication	0	0	0	0	0	0	0	0	0	0	0	0	0	0.0
Transferring In from another JCF	0	0	0	0	0	0	0	0	0	0	0	0	0	0.0
<b>Total Entries into JCF</b>	<b>0</b>	<b>0</b>	<b>0</b>	<b>0</b>	<b>0</b>	<b>0</b>	<b>0</b>	<b>0</b>	<b>0</b>	<b>0</b>	<b>0</b>	<b>0</b>	<b>0</b>	<b>0.0</b>
<b>Youth Exiting Facility</b>	<b>Jul-16</b>	<b>Aug-16</b>	<b>Sep-16</b>	<b>Oct-16</b>	<b>Nov-16</b>	<b>Dec-16</b>	<b>Jan-17</b>	<b>Feb-17</b>	<b>Mar-17</b>	<b>Apr-17</b>	<b>May-17</b>	<b>Jun-17</b>	<b>Total</b>	<b>Monthly Avg</b>
Transferred out to another JCF	6	3	11	6	9	8	5	0	0	0	0	0	0	3.7
Conditional Releases	7	4	5	6	4	4	5	0	0	0	0	0	0	2.7
Direct Discharges	0	0	0	0	0	0	0	0	0	0	0	0	0	0.0
<b>Total Exits from Facility</b>	<b>13</b>	<b>7</b>	<b>16</b>	<b>12</b>	<b>13</b>	<b>12</b>	<b>10</b>	<b>0</b>	<b>0</b>	<b>0</b>	<b>0</b>	<b>0</b>	<b>83</b>	<b>6.9</b>
<b>Month End Population</b>	<b>Jul-16</b>	<b>Aug-16</b>	<b>Sep-16</b>	<b>Oct-16</b>	<b>Nov-16</b>	<b>Dec-16</b>	<b>Jan-17</b>	<b>Feb-17</b>	<b>Mar-17</b>	<b>Apr-17</b>	<b>May-17</b>	<b>Jun-17</b>	<b>Total</b>	<b>Monthly Avg</b>
Total # Youth placed in JCF on last day of the month	74	67	51	35	22	11	0	0	0	0	0	0	0	20.0

**JCF Month End Summary Management Information**  
**For Youth Placed in JCF on Last Day of the Month in FY17**

**Statewide Summary**

Fiscal Year 2017 Month End

Length of Stay & Age	Jul	Aug	Sep	Oct	Nov	Dec	Jan	Feb	Mar	Apr	May	Jun
Average Months for all Youth	9.3	9.0	8.3	8.0	7.5	7.0	6.4	6.5	6.8	7.2	7.3	7.5
Median Months for all Youth	6.4	5.9	4.0	5.1	4.8	4.2	4.2	5.0	5.1	5.9	6.5	6.6
Average Age All Youth	17.8	17.8	17.8	17.8	17.7	17.7	17.7	17.6	17.7	17.6	17.6	17.7
Median Age All Youth	17.8	17.7	17.7	17.7	17.7	17.8	17.7	17.8	17.8	17.8	17.7	17.7

**Female Summary**

Fiscal Year 2017 Month End

Length of Stay & Age	Jul	Aug	Sep	Oct	Nov	Dec	Jan	Feb	Mar	Apr	May	Jun
Average Months in JCF	4.8	7.6	6.7	6.3	5.9	6.0	6.2	5.9	5.2	6.4	7.3	5.6
Median Months In JCF	2.9	7.5	3.3	3.0	3.0	3.1	3.2	3.9	3.7	5.9	6.5	2.7
Average Age	17.1	17.2	17.2	16.8	16.6	16.7	16.8	16.8	16.7	16.3	16.7	16.7
Median Age	17.1	17.3	17.4	16.9	16.9	17.2	17.3	17.1	17.5	16.1	17.0	16.4

**KJCC Summary**

Fiscal Year 2017 Month End

Length of Stay & Age	Jul	Aug	Sep	Oct	Nov	Dec	Jan	Feb	Mar	Apr	May	Jun
Average Months in JCF	8.7	6.9	6.6	6.2	6.5	6.5	6.7	6.6	6.8	7.2	7.4	7.7
Median Months In JCF	5.1	3.9	3.8	3.8	4.3	4.2	4.6	5.1	5.6	5.9	6.5	6.7
Average Age	17.8	17.7	17.7	17.5	17.5	17.7	17.7	17.7	17.7	17.7	17.7	17.8
Median Age	17.8	17.6	17.7	17.5	17.6	17.8	17.9	17.0	17.8	17.8	17.8	17.8

**LJCF Summary**

Fiscal Year 2017 Month End

Length of Stay & Age	Jul	Aug	Sep	Oct	Nov	Dec	Jan	Feb	Mar	Apr	May	Jun
Average Months in JCF	10.7	13.5	14.3	15.5	16.6	20.1	All Youth removed from LJCF in January					
Median Months In JCF	8.5	10.8	11.3	12.1	13.3	17.7						
Average Age	17.9	18.1	18.1	18.6	18.7	18.9						
Median Age	18.0	18.0	18.1	18.8	18.9	19.0						



**Age of All JCF Youth  
June 2017 Month End Population**

