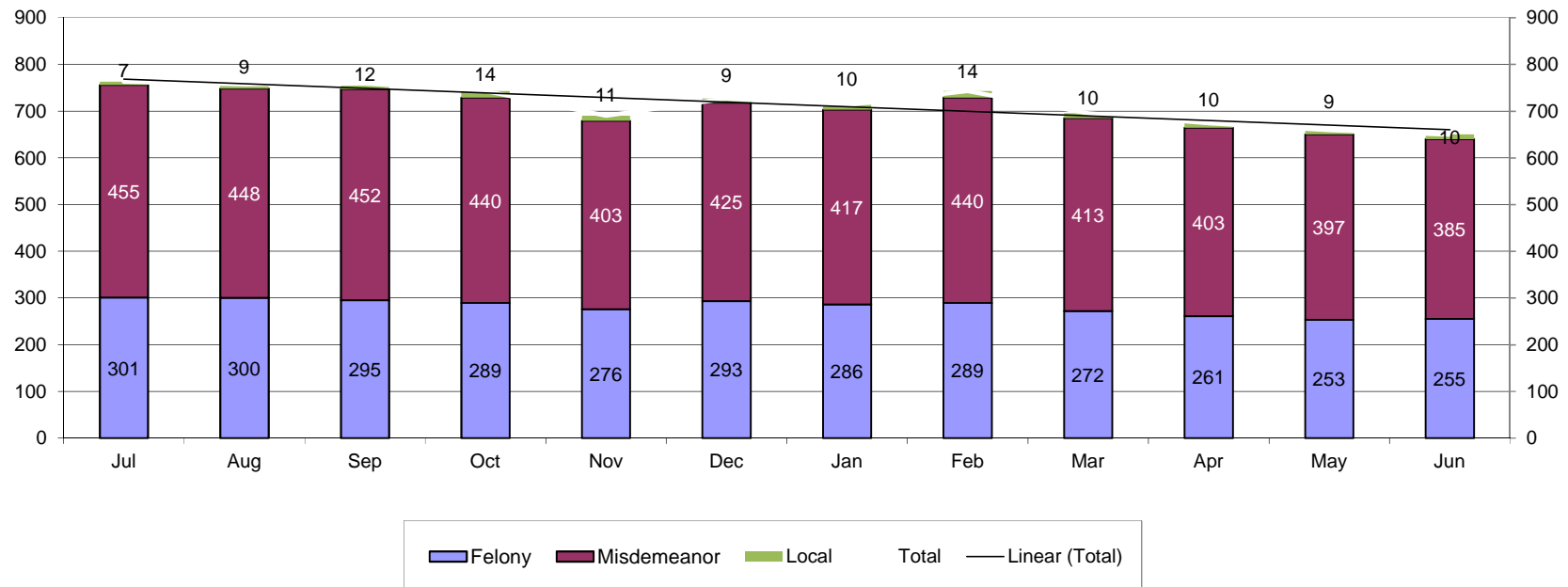


Juvenile Intensive Supervision Probation Youth on Last Day of Month FY 2017

	Jul	Aug	Sep	Oct	Nov	Dec	Jan	Feb	Mar	Apr	May	Jun	Avg of Total
Felony	301	300	295	289	276	293	286	289	272	261	253	255	281
Misdemeanor	455	448	452	440	403	425	417	440	413	403	397	385	423
Local	7	9	12	14	11	9	10	14	10	10	9	10	10
Total	763	757	759	743	690	727	713	743	695	674	659	650	714

Juvenile Intensive Supervision Probation (JISP) is a structured community-based supervision program that provides an additional sentencing option to Kansas' courts. Youth on JISP have either previously failed traditional court service probation or have committed a serious offense, but do not require an out-of-home placement or commitment to a juvenile correctional facility. This data represents youth on JISP on the last day of the month with the most recent offense type during FY 2016.

JISP Population and Most Recent Offense Type FY 2016



Juvenile Intensive Supervision Probation Youth by Judicial District on Last Day of the Month FY 2017

		1	2	3	4	5	6	7	8	9	10	11	12	13	14	16	15/17/23	18	19	20	21	22	24	25	26	27	28	29	30	31	Total	Average of Total
Jul	Felony	6	4	17	12	6	9	7	20	4	17	17	3	14	0	5	9	70	3	14	12	4	0	8	6	2	11	12	9	0	301	10.38
	Misdemeanor	12	6	3	8	19	8	7	8	7	50	20	2	19	16	11	45	68	9	26	7	4	2	18	15	9	30	3	20	3	455	15.69
	Local	0	0	0	0	0	0	0	0	0	0	1	0	0	0	3	0	2	0	1	0	0	0	0	0	0	0	0	0	0	7	0.24
	Total	18	10	20	20	25	17	14	28	11	67	38	5	33	16	19	54	140	12	41	19	8	2	26	21	11	41	15	29	3	763	26.31
Aug	Felony	6	5	18	11	5	8	8	21	4	16	18	2	13	1	4	10	66	3	14	12	3		9	9	1	12	12	9	0	300	10.71
	Misdemeanor	10	12	3	9	16	7	8	8	7	57	19	1	23	13	11	42	62	9	25	6	5	2	17	14	8	28	3	20	3	448	15.45
	Local	0	0	0	0	0	0	0	0	0	0	1	0	0	0	3	0	4	0	1	0	0	0	0	0	0	0	0	0	0	9	0.31
	Total	16	17	21	20	21	15	16	29	11	73	38	3	36	14	18	52	132	12	40	18	8	2	26	23	9	40	15	29	3	757	26.10
Sep	Felony	6	5	18	11	6	8	8	18	4	17	18	5	13	1	4	10	60	4	13	12	2		10	9	1	8	12	10	2	295	10.54
	Misdemeanor	12	12	6	9	14	7	10	9	7	62	20	1	21	14	11	40	63	6	26	5	3	2	17	12	8	30	2	20	3	452	15.59
	Local	0	0	0	0	0	0	0	0	0	0	1	0	0	0	3	0	7	0	1	0	0	0	0	0	0	0	0	0	0	12	0.41
	Total	18	17	24	20	20	15	18	27	11	79	39	6	34	15	18	50	130	10	40	17	5	2	27	21	9	38	14	30	5	759	26.17
Oct	Felony	6	5	16	11	6	5	8	17	4	20	19	5	13	3	4	10	57	4	13	10	2		6	6	3	10	12	10	4	289	10.32
	Misdemeanor	9	9	8	8	13	7	9	6	8	65	18	2	23	14	10	39	62	6	26	6	4	3	14	13	8	26	2	19	3	440	15.17
	Local	0	0	0	0	0	0	0	1	0	0	1	0	0	0	3	0	8	1	0	0	0	0	0	0	0	0	0	0	0	14	0.48
	Total	15	14	24	19	19	12	17	24	12	85	38	7	36	17	17	49	127	11	39	16	6	3	20	19	11	36	14	29	7	743	25.62
Nov	Felony	6	5	15	11	6	5	7	14	4	18	17	6	12	4	5	9	54	3	13	10	2		7	5	3	10	11	10	4	276	9.86
	Misdemeanor	9	8	8	7	10	7	8	2	8	64	18	2	22	14	7	31	57	6	23	6	4	3	13	10	8	25	2	18	3	403	13.90
	Local	0	0	0	0	0	0	0	1	0	0	1	0	0	0	2	0	6	1	0	0	0	0	0	0	0	0	0	0	0	11	0.38
	Total	15	13	23	18	16	12	15	17	12	82	36	8	34	18	14	40	117	10	36	16	6	3	20	15	11	35	13	28	7	690	23.79
Dec	Felony	6	5	14	13	6	5	7	13	5	23	16	6	13	4	5	8	59	4	12	8	2		8	8	3	11	13	11	5	293	10.46
	Misdemeanor	9	8	7	9	8	7	7	6	7	68	23	1	25	12	7	31	61	8	22	6	3	3	15	14	7	29	2	17	3	425	14.66
	Local	0	0	0	0	0	0	0	0	0	0	0	0	0	0	2	0	6	1	0	0	0	0	0	0	0	0	0	0	0	9	0.31
	Total	15	13	21	22	14	12	14	19	12	91	39	7	38	16	14	39	126	13	34	14	5	3	23	22	10	40	15	28	8	727	25.07
Jan	Felony	5	5	14	12	4	6	6	12	5	25	15	5	12	4	5	7	63	4	11	9	2		7	8	2	11	11	10	6	286	10.21
	Misdemeanor	10	8	6	11	9	6	8	7	7	70	23	1	23	12	8	28	54	6	20	6	3	3	11	15	7	32	2	17	4	417	14.38
	Local	0	0	0	0	0	0	0	0	0	0	0	0	0	0	2	0	7	1	0	0	0	0	0	0	0	0	0	0	0	10	0.34
	Total	15	13	20	23	13	12	14	19	12	95	38	6	35	16	15	35	124	11	31	15	5	3	18	23	9	43	13	27	10	713	24.59
Feb	Felony	6	5	16	11	6	5	8	17	4	20	19	5	13	3	4	10	57	4	13	10	2		6	6	3	10	12	10	4	289	10.32
	Misdemeanor	9	9	8	8	13	7	9	6	8	65	18	2	23	14	10	39	62	6	26	6	4	3	14	13	8	26	2	19	3	440	15.17
	Local	0	0	0	0	0	0	0	1	0	0	1	0	0	0	3	0	8	1	0	0	0	0	0	0	0	0	0	0	0	14	0.48
	Total	15	14	24	19	19	12	17	24	12	85	38	7	36	17	17	49	127	11	39	16	6	3	20	19	11	36	14	29	7	743	25.62
Mar	Felony	2	5	10	9	3	6	5	11	5	22	15	5	11	4	5	7	60	5	11	11	2		7	10	2	8	14	10	7	272	9.71
	Misdemeanor	12	7	5	13	10	4	9	8	7	58	21	1	25	9	8	26	60	6	19	4	3	2	11	16	8	34	4	19	4	413	14.24
	Local	0	0	0	0	0	0	0	0	0	0	0	0	0	0	2	0	7	1	0	0	0	0	0	0	0	0	0	0	0	10	0.34
	Total	14	12	15	22	13	10	14	19	12	80	36	6	36	13	15	33	127	12	30	15	5	2	18	26	10	42	18	29	11	695	23.97
Apr	Felony	2	5	9	8	4	6	4	11	6	23	15	7	8	4	5	7	55	4	11	11	3	0	6	9	3	8	11	9	7	261	9.00
	Misdemeanor	11	8	5	14	11	3	10	10	7	54	16	1	27	7	7	22	57	5	19	6	3	1	12	19	8	34	4	19	3	403	13.90
	Local	0	0	0	0	0	0	0	0	0	0	0	0	0	0	2	0	7	1	0	0	0	0	0	0	0	0	0	0	0	10	0.34
	Total	13	13	14	22	15	9	14	21	13	77	31	8	35	11	14	29	119	10	30	17	6	1	18	28	11	42	15	28	10	674	23.24
May	Felony	2	4	9	10	3	5	4	10	6	25	14	7	7	3	5	7	52	5	9	11	3	0	5	10	2	8	9	10	8	253	8.72
	Misdemeanor	12	7	4	13	10	2	11	11	7	57	17	1	27	4	7	21	56	6	20	4	3	2	10	18	9	31	4	20	3	397	13.69
	Local	0	0	0	0	0	0	0	0	0	0	0	0	0	0	2	0	6	1	0	0	0	0	0	0	0	0	0	0	0	9	0.31
	Total	14	11	13	23	13	7	15	21	13	82	31	8	34	7	14	28	114	12	29	15	6	2	15	28	11	39	13	30	11	659	22.72
Jun	Felony	2	6	11	10	4	4	4	9	6	28	14	8	8	3	5	7	47	5	8	11	4		5	11	1	9	6	11	8	255	9.11
	Misdemeanor	15	5	4	13	11	2	8	9	7	58	18	1	25	2	7	19	59	6	16	4	5	1	8	16	9	28	4	20	4	384	13.24
	Local	0	0	0	0	0	0	0	0	0	0	0	0	0	0	2	0	8	0	0	0	0	0	0	0	0	0	0	0	0	10	0.34
	Total	17	11	15	23	15	6	12	18	13	86	32	9	33	5	14	26	114	11	24	15	<										