

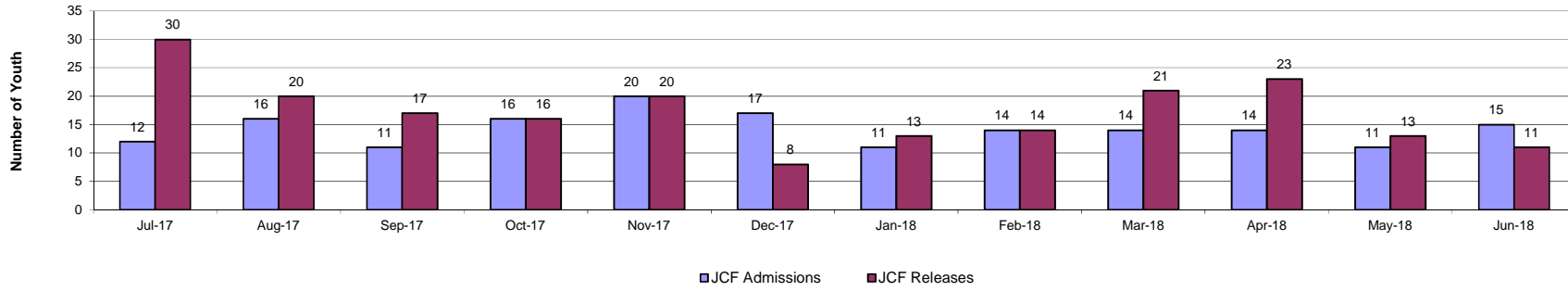
Juvenile Correctional Facility Population Activity
Fiscal Year 2018

Releases in FY 2018 are More than Admissions by 20.5%

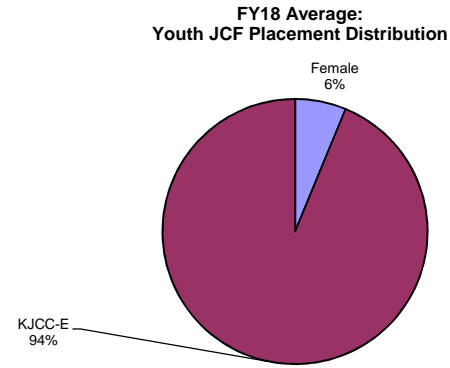
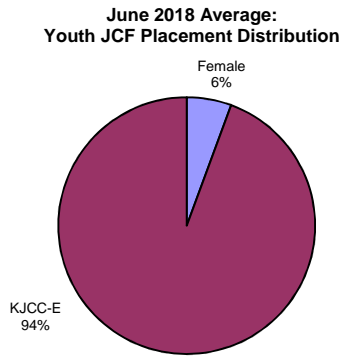
Statewide JCF Activity Summary

	Jul-17	Aug-17	Sep-17	Oct-17	Nov-17	Dec-17	Jan-18	Feb-18	Mar-18	Apr-18	May-18	Jun-18	Total	FY18 Avg	FY17 Avg
JCF Admissions	12	16	11	16	20	17	11	14	14	14	11	15	171	14.3	23.4
JCF Releases	30	20	17	16	20	8	13	14	21	23	13	11	206	17.2	20.3
Month End Population	195	191	185	185	185	194	192	192	185	176	174	178	2232	186.0	212.5

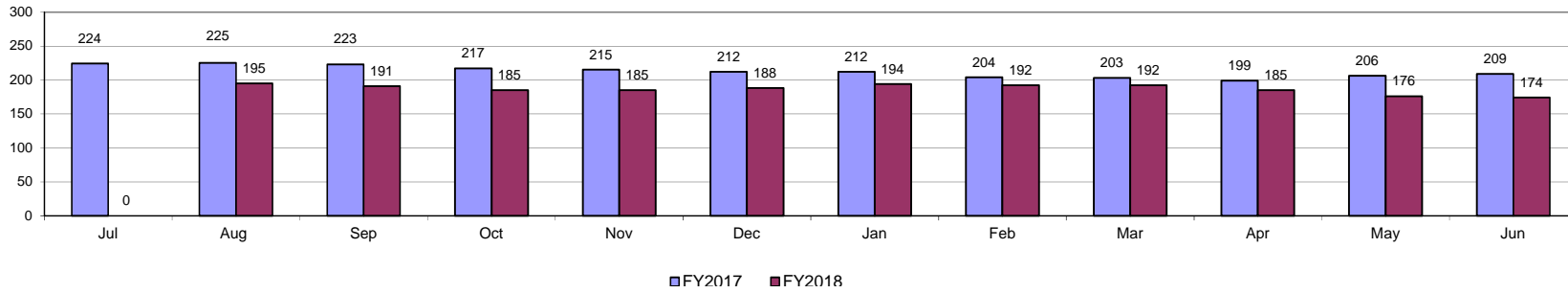
Statewide JCF Admissions and Releases FY18



Statewide JCF Month End Population



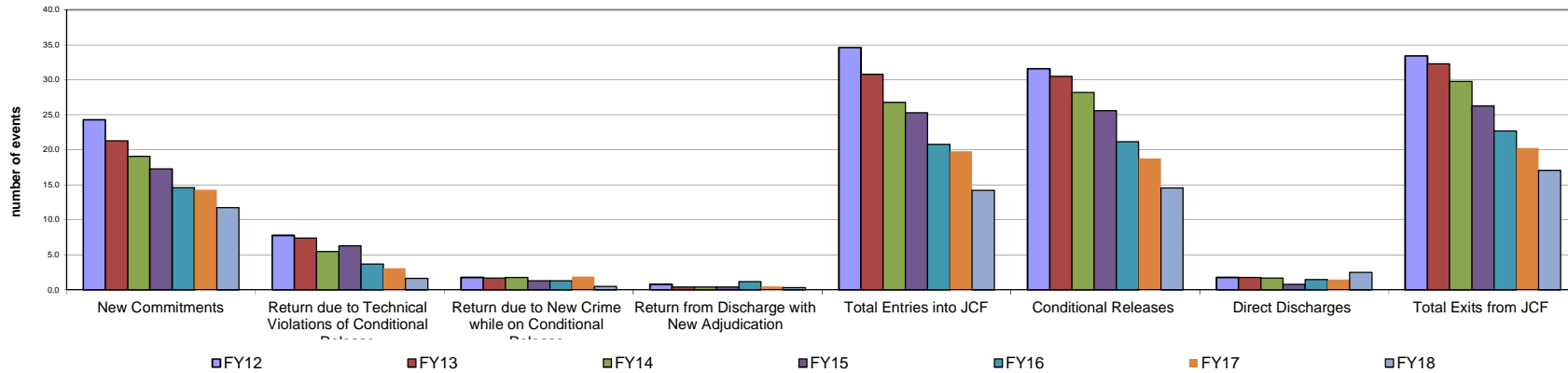
Statewide Juvenile Correctional Facility Month End Population



Census Events: Average Monthly Frequency

	FY08	FY09	FY10	FY11	FY12	FY13	FY14	FY15	FY16	FY17	FY18
New Commitments	25.8	23.7	21.3	22.1	24.3	21.3	19.1	17.3	14.6	14.3	11.8
Return due to Technical Violations of Conditional Release	8.7	11.0	8.5	7.6	7.8	7.4	5.5	6.3	3.7	3.1	1.7
Return due to New Crime while on Conditional Release	1.8	1.8	2.5	2.2	1.8	1.7	1.8	1.3	1.3	1.9	0.5
Return from Discharge with New Adjudication	0.7	1.0	1.1	1.1	0.8	0.4	0.4	0.4	1.2	0.5	0.3
Total Entries into JCF	37.0	37.5	33.4	32.8	34.6	30.8	26.8	25.3	20.8	19.8	14.3
Conditional Releases	40.5	37.7	33.2	30.5	31.6	30.5	28.2	25.6	21.2	18.8	14.6
Direct Discharges	1.5	1.6	1.7	2.3	1.8	1.8	1.7	0.8	1.5	1.5	2.5
Total Exits from JCF	42.0	39.3	34.8	32.8	33.4	32.3	29.8	26.3	22.7	20.3	17.1

Statewide Average JCF Census # Events Across Years



JCF Detail: Statewide

Youth Entering All JCF	Jul-17	Aug-17	Sep-17	Oct-17	Nov-17	Dec-17	Jan-18	Feb-18	Mar-18	Apr-18	May-18	Jun-18	Total	Monthly Avg
New Commitments	11	12	9	15	17	14	11	11	10	10	10	11	141	11.8
Return due to Technical Violations of Conditional Release	1	4	1	1	1	3	0	2	2	1	1	3	20	1.7
Return due to New Crime while on Conditional Release	0	0	1	0	1	0	0	1	1	2	0	0	6	0.5
Return from Discharge with New Adjudication	0	0	0	0	1	0	0	0	1	1	0	1	4	0.3
Total Entries into JCF	12	16	11	16	20	17	11	14	14	14	11	15	171	14.3
Youth Exiting Facility	Jul-17	Aug-17	Sep-17	Oct-17	Nov-17	Dec-17	Jan-18	Feb-18	Mar-18	Apr-18	May-18	Jun-18	Total	Monthly Avg
Conditional Releases	23	18	15	14	20	6	11	12	17	21	10	8	175	14.6
Direct Discharges	7	2	2	2	0	2	2	2	4	2	2	3	30	2.5
Total Exits from Facility	30	20	17	16	20	8	13	14	21	23	12	11	205	17.1
Month End Population	Jul-17	Aug-17	Sep-17	Oct-17	Nov-17	Dec-17	Jan-18	Feb-18	Mar-18	Apr-18	May-18	Jun-18	Total	Monthly Avg
Total # Youth placed in JCF on last day of the month	195	191	185	185	185	194	192	192	185	176	174	178	2232	186.0

JCF Detail: Females

Youth Entering Females	Jul-17	Aug-17	Sep-17	Oct-17	Nov-17	Dec-17	Jan-18	Feb-18	Mar-18	Apr-18	May-18	Jun-18	Total	Monthly Avg
New Commitments	0	1	0	2	0	1	0	0	1	1	1	0	7	0.6
Return due to Technical Violations of Conditional Release	0	0	0	0	1	1	0	0	1	0	1	0	4	0.3
Return due to New Crime while on Conditional Release	0	0	0	0	0	0	0	0	0	0	0	0	0	0.0
Return from Discharge with New Adjudication	0	0	0	0	0	0	0	0	0	0	0	0	0	0.0
Transferring In from another JCF (N/A)	0	0	0	0	0	0	0	0	0	0	0	0	0	0.0
Total Entries into JCF	0	1	0	2	1	2	0	0	2	1	2	0	11	0.9
Youth Exiting Facility	Jul-17	Aug-17	Sep-17	Oct-17	Nov-17	Dec-17	Jan-18	Feb-18	Mar-18	Apr-18	May-18	Jun-18	Total	Monthly Avg
Transferred out to another JCF (N/A)	0	0	0	0	0	0	0	0	0	0	0	0	0	N/A
Conditional Releases	4	4	2	1	1	0	1	1	0	2	0	0	16	1.3
Direct Discharges	1	1	0	0	0	1	1	0	0	0	1	1	6	0.5
Total Exits from Facility	5	5	2	1	1	1	2	1	0	2	1	1	22	1.8
Month End Population	Jul-17	Aug-17	Sep-17	Oct-17	Nov-17	Dec-17	Jan-18	Feb-18	Mar-18	Apr-18	May-18	Jun-18	Total	Monthly Avg
Total # Youth placed in JCF on last day of the month	16	12	10	11	11	12	10	9	11	10	11	10	133	11.1

JCF Detail: Kansas Juvenile Correctional Complex Males

Youth Entering KJCC	Jul-17	Aug-17	Sep-17	Oct-17	Nov-17	Dec-17	Jan-18	Feb-18	Mar-18	Apr-18	May-18	Jun-18	Total	Monthly Avg
New Commitments	12	11	9	13	17	13	11	11	9	9	10	11	136	11.3
Return due to Technical Violations of Conditional Release	1	4	1	1	0	2	0	2	1	1	0	3	16	1.3
Return due to new crime while on conditional release	0	0	1	0	1	0	0	1	1	2	0	0	6	0.5
Return from Discharge with New Adjudication	0	0	0	0	1	0	0	0	1	1	0	1	4	0.3
Transferring In from another JCF	0	0	0	0	0	0	0	0	0	0	0	0	0	0.0
Total Entries into JCF	13	15	11	14	19	15	11	14	12	13	10	15	162	13.5
Youth Exiting Facility	Jul-17	Aug-17	Sep-17	Oct-17	Nov-17	Dec-17	Jan-18	Feb-18	Mar-18	Apr-18	May-18	Jun-18	Total	Monthly Avg
Transferred out to another JCF	0	0	0	0	0	0	0	0	0	0	0	0	0	0.0
Conditional Releases	19	14	13	13	19	6	10	11	17	19	10	8	159	13.3
Direct Discharges	6	1	2	2	0	1	1	2	4	2	2	2	25	2.1
Total Exits from Facility	25	15	15	15	19	7	11	13	21	21	12	11	185	15.4
Month End Population	Jul-17	Aug-17	Sep-17	Oct-17	Nov-17	Dec-17	Jan-18	Feb-18	Mar-18	Apr-18	May-18	Jun-18	Total	Monthly Avg
Total # Youth placed in JCF on last day of the month	179	179	175	174	174	182	182	183	174	166	164	178	2110	175.8

**JCF Month End Summary Management Information
For Youth Placed in JCF on Last Day of the Month in FY18**

Statewide Summary

Fiscal Year 2018 Month End

Length of Stay & Age	Jul	Aug	Sep	Oct	Nov	Dec	Jan	Feb	Mar	Apr	May	Jun
Average Months for all Youth	7.7	8.1	8.9	9.4	9.2	9.4	9.8	10.1	10.1	10.0	10.0	10.9
Median Months for all Youth	7.4	7.8	8.4	8.5	8.4	8.3	8.2	8.8	9.2	8.2	7.94	8.9
Average Age All Youth	17.7	17.7	17.8	17.8	17.7	17.6	17.6	17.7	17.7	17.7	17.7	17.7
Median Age All Youth	17.8	17.8	17.8	17.8	17.8	17.8	17.7	17.7	17.8	17.8	17.8	17.9

Female Summary

Fiscal Year 2018 Month End

Length of Stay & Age	Jul	Aug	Sep	Oct	Nov	Dec	Jan	Feb	Mar	Apr	May	Jun
Average Months in JCF	6.7	5.8	7.4	7.2	7.6	7.6	8.1	9.5	8.7	8.5	8.1	10.6
Median Months In JCF	3.7	4.3	5.7	6.6	6.7	6.9	7.9	9.6	9.1	8.4	5.7	10.4
Average Age	16.7	16.3	16.5	16.3	16.5	16.3	16.3	16.3	16.6	16.7	16.8	16.9
Median Age	16.4	16.1	16.4	16.4	16.5	16.2	16.3	16.4	16.5	16.7	16.7	16.8

Male Summary

Fiscal Year 2018 Month End

Length of Stay & Age	Jul	Aug	Sep	Oct	Nov	Dec	Jan	Feb	Mar	Apr	May	Jun
Average Months in JCF	7.8	8.3	9.0	9.5	9.3	9.5	9.8	10.1	10.2	10.1	10.2	10.9
Median Months In JCF	7.4	7.8	8.8	8.7	8.4	8.6	8.2	8.7	9.2	8.2	8.0	8.8
Average Age	17.8	17.8	17.8	17.8	17.7	17.7	17.7	17.7	17.8	17.7	17.8	17.8
Median Age	17.8	17.8	17.9	17.9	17.9	17.9	17.8	17.8	17.8	17.8	17.9	17.9

**Age of All JCF Youth
April 2018 Month End Population**

