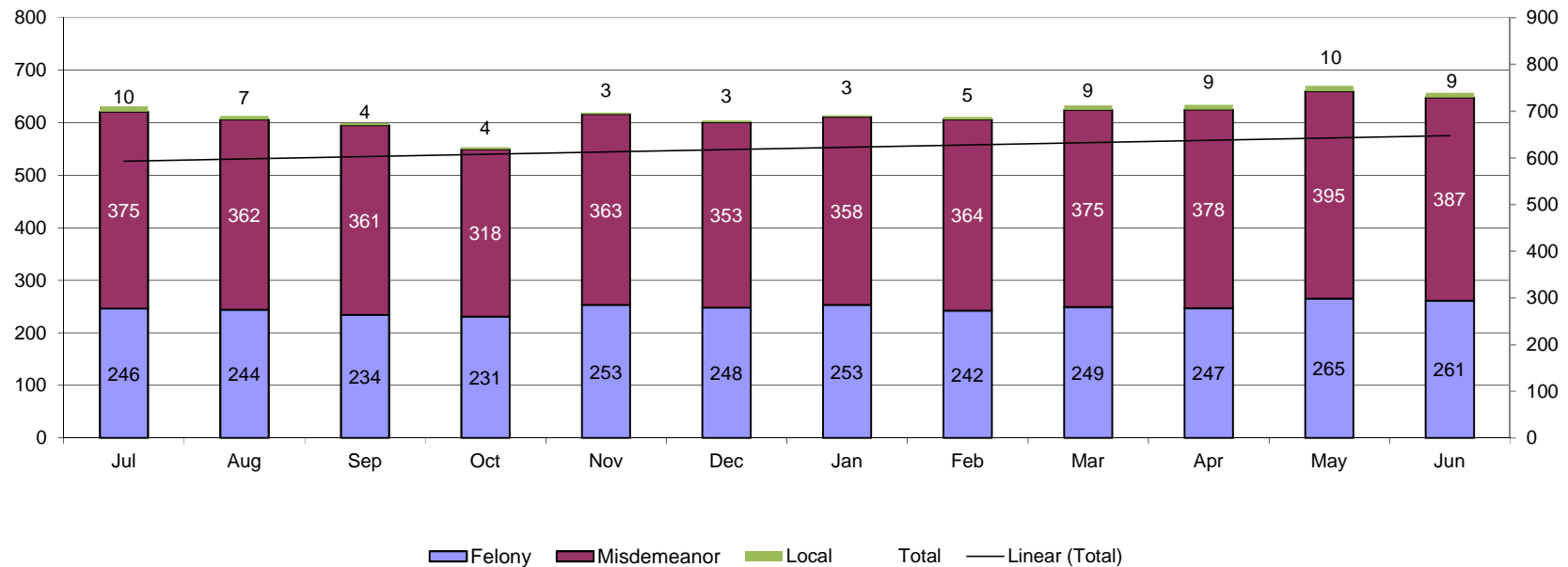


Juvenile Intensive Supervision Probation Youth on Last Day of Month FY 2018

	Jul	Aug	Sep	Oct	Nov	Dec	Jan	Feb	Mar	Apr	May	Jun	Avg of Total
Felony	246	244	234	231	253	248	253	242	249	247	265	261	248
Misdemeanor	375	362	361	318	363	353	358	364	375	378	395	387	366
Local	10	7	4	4	3	3	3	5	9	9	10	9	6
Total	631	613	599	553	619	604	614	611	633	634	670	657	620

Juvenile Intensive Supervision Probation (JISP) is a structured community-based supervision program that provides an additional sentencing option to Kansas' courts. Youth on JISP have either previously failed traditional court service probation or have committed a serious offense, but do not require an out-of-home placement or commitment to a juvenile correctional facility. This data represents youth on JISP on the last day of the month with the most recent offense type during FY 2016.

JISP Population and Most Recent Offense Type FY 2018



Juvenile Intensive Supervision Probation Youth by Judicial District on Last Day of the Month FY 2018

		1	2	3	4	5	6	7	8	9	10	11	12	13	14	16	15/17/23	18	19	20	21	22	24	25	26	27	28	29	30	31	Total	Average of Total
Jul	Felony	3	6	11	11	3	4	4	11	6	26	12	8	7	4	5	5	45	3	7	10	4	0	5	9	1	9	8	12	7	246	8.48
	Misdemeanor	18	5	5	13	12	2	9	11	7	54	20	1	19	2	6	20	57	6	15	4	4	0	7	18	10	24	3	19	4	375	12.93
	Local	0	0	0	0	0	0	0	0	0	0	0	0	0	0	2	0	8	0	0	0	0	0	0	0	0	0	0	0	0	10	0.34
	Total	21	11	16	24	15	6	13	22	13	80	32	9	26	6	13	25	110	9	22	14	8	0	12	27	11	33	11	31	11	631	21.76
Aug	Felony	5	5	17	11	5	4	3	9	6	22	12	7	9	4	3	5	41	3	6	11	4	0	4	10	1	9	8	12	8	244	8.41
	Misdemeanor	20	5	5	12	12	2	9	9	7	54	21		17	1	4	19	57	8	16	4	4	3	14	12	22	3	18	4	0	362	12.93
	Local	0	0	0	0	0	0	0	0	0	0	0	0	0	0	1	0	6	0	0	0	0	0	0	0	0	0	0	0	0	7	0.24
	Total	25	10	22	23	17	6	12	18	13	76	33	7	26	5	8	24	104	11	22	15	8	3	18	22	23	12	26	16	8	613	21.14
Sep	Felony	5	5	16	10	5	4	3	8	6	19	11	5	10	4	4	5	41	2	7	10	4	2	0	10	1	9	10	10	8	234	8.07
	Misdemeanor	17	8	4	12	14	2	10	6	6	52	24	2	16	3	5	18	57	7	16	4	2	5	0	13	12	21	3	18	4	361	12.45
	Local	0	0	0	0	0	0	0	0	0	0	0	0	0	0	1	0	3	0	0	0	0	0	0	0	0	0	0	0	0	4	0.14
	Total	22	13	20	22	19	6	13	14	12	71	35	7	26	7	10	23	101	9	23	14	6	7	0	23	13	30	13	28	12	599	20.66
Oct	Felony	5	5	18	10	5	4	3	8	5	22	10	4	11	3	4	5	39	2	7	9	3	0	2	10	1	10	9	9	8	231	7.97
	Misdemeanor	18	8	4	12	13	2	9	5	5	40	23	2	11	3	3	12	53	7	13	4	2	0	5	13	10	20	1	16	4	318	10.97
	Local	0	0	0	0	0	0	0	0	0	0	0	0	0	0	1	0	3	0	0	0	0	0	0	0	0	0	0	0	0	4	0.14
	Total	23	13	22	22	18	6	12	13	10	62	33	6	22	6	8	17	95	9	20	13	5	0	7	23	11	30	10	25	12	553	19.07
Nov	Felony	6	7	17	10	5	5	2	8	4	30	8	4	13	0	4	6	48	3	9	10	3	0	5	8	2	8	11	10	7	253	8.72
	Misdemeanor	18	7	5	10	13	4	11	7	7	49	29	2	14	5	3	14	61	7	17	4	2	1	3	12	12	22	3	17	4	363	12.52
	Local	0	0	0	0	0	0	0	0	0	0	0	0	0	0	1	0	2	0	0	0	0	0	0	0	0	0	0	0	0	3	0.10
	Total	24	14	22	20	18	9	13	15	11	79	37	6	27	5	8	20	111	10	26	14	5	1	8	20	14	30	14	27	11	619	21.34
Dec	Felony	6	7	17	11	5	5	2	7	5	24	8	3	14	0	4	6	50	2	9	9	5	0	5	8	2	7	12	10	5	248	8.55
	Misdemeanor	17	8	4	12	12	4	8	11	4	54	27	3	14	6	3	13	59	5	17	3	2	1	3	11	9	22	3	14	4	353	12.17
	Local	0	0	0	0	0	0	0	0	0	0	0	0	0	0	1	0	2	0	0	0	0	0	0	0	0	0	0	0	0	3	0.10
	Total	23	15	21	23	17	9	10	18	9	78	35	6	28	6	8	19	111	7	26	12	7	1	8	19	11	29	15	24	9	604	20.83
Jan	Felony	9	5	18	10	6	5	1	5	6	21	7	2	15		4	7	56	2	9	9	5		6	7	2	9	12	10	5	253	9.37
	Misdemeanor	18	9	4	12	13	4	5	10	4	65	26	3	16	5	4	13	54	5	17	5	4	1	3	12	8	20	3	12	3	358	12.34
	Local	0	0	0	0	0	0	0	0	0	0	0	0	0	0	1	0	2	0	0	0	0	0	0	0	0	0	0	0	0	3	0.10
	Total	27	14	22	22	19	9	6	15	10	86	33	5	31	5	9	20	112	7	26	14	9	1	9	19	10	29	15	22	8	614	21.17
Feb	Felony	9	5	18	8	6	5	1	5	6	21	6	2	16	0	3	6	57	1	7	7	7	0	8	4	2	8	11	10	3	242	8.34
	Misdemeanor	19	5	3	10	13	4	5	12	4	61	25	3	19	6	3	15	62	6	19	5	3	2	5	9	8	21	2	12	3	364	12.55
	Local	0	0	0	0	0	0	0	0	0	0	0	0	0	0	1	0	4	0	0	0	0	0	0	0	0	0	0	0	0	5	0.17
	Total	28	10	21	18	19	9	6	17	10	82	31	5	35	6	7	21	123	7	26	12	10	2	13	13	10	29	13	22	6	611	21.07
Mar	Felony	9	5	18	7	5	6	1	2	7	21	6	2	17	0	5	7	60	1	7	6	7	0	6	5	2	9	14	11	3	249	8.59
	Misdemeanor	22	5	2	9	14	4	7	11	5	62	25	3	20	5	7	16	59	5	19	6	4	2	7	10	9	21	2	11	3	375	12.93
	Local	0	0	0	0	0	0	0	0	0	0	0	0	0	0	3	0	6	0	0	0	0	0	0	0	0	0	0	0	0	9	0.31
	Total	31	10	20	16	19	10	8	13	12	83	31	5	37	5	15	23	125	6	26	12	11	2	13	15	11	30	16	22	6	633	21.83
Apr	Felony	7	6	18	9	2	5	1	2	8	20	5	2	16		4	8	57	1	7	6	10		5	5	2	12	15	11	3	247	9.15
	Misdemeanor	23	6	3	8	13	4	5	11	4	64	23	3	20	6	8	20	61	5	17	4	4	3	9	10	7	19	2	13	3	378	13.03
	Local	0	0	0	0	0	0	0	0	0	0	0	0	0	0	2	0	7	0	0	0	0	0	0	0	0	0	0	0	0	9	0.31
	Total	30	12	21	17	15	9	6	13	12	84	28	5	36	6	14	28	125	6	24	10	14	3	14	15	9	31	17	24	6	634	21.86
May	Felony	6	5	20	11	3	5	2	2	8	22	5	2	16	1	4	9	56	3	8	4	11	2	8	6	3	16	16	9	2	265	9.14
	Misdemeanor	25	6	4	7	12	4	5	10	3	67	21	2	22	6	12	20	66	5	20	5	4	3	12	13	8	19	1	11	2	395	13.62
	Local	0	0	0	0	0	0	0	0	0	0	0	0	0	0	2	0	8	0	0	0	0	0	0	0	0	0	0	0	0	10	0.34
	Total	31	11	24	18	15	9	7	12	11	89	26	4	38	7	18	29	130	8	28	9	15	5	20	19	11	35	17	20	4	670	23.10
Jun	Felony	7	6	17	12	5	5	2	3	8	20	4	2	16	2	4	8	54	4	8	4	12	2	8	5	3	16	16	8	0	261	9.00
	Misdemeanor	22	4	4	6	10	5	3	11	3	69	21	2	18	5	13	19	62	4	22	4	4	3	17	16	7	17	2	12	2	387	13.34
	Local	0	0	0	0	0	0	0	0	0	0	0	0	0	0	2	0	7	0	0	0	0	0	0	0	0	0	0	0	0	9	0.31
	Total	29	10	21	18	15	10	5	14	11	89	25	4	34	7	19	27	123	8	30	8	16	5	25	21	10	33	18	20			