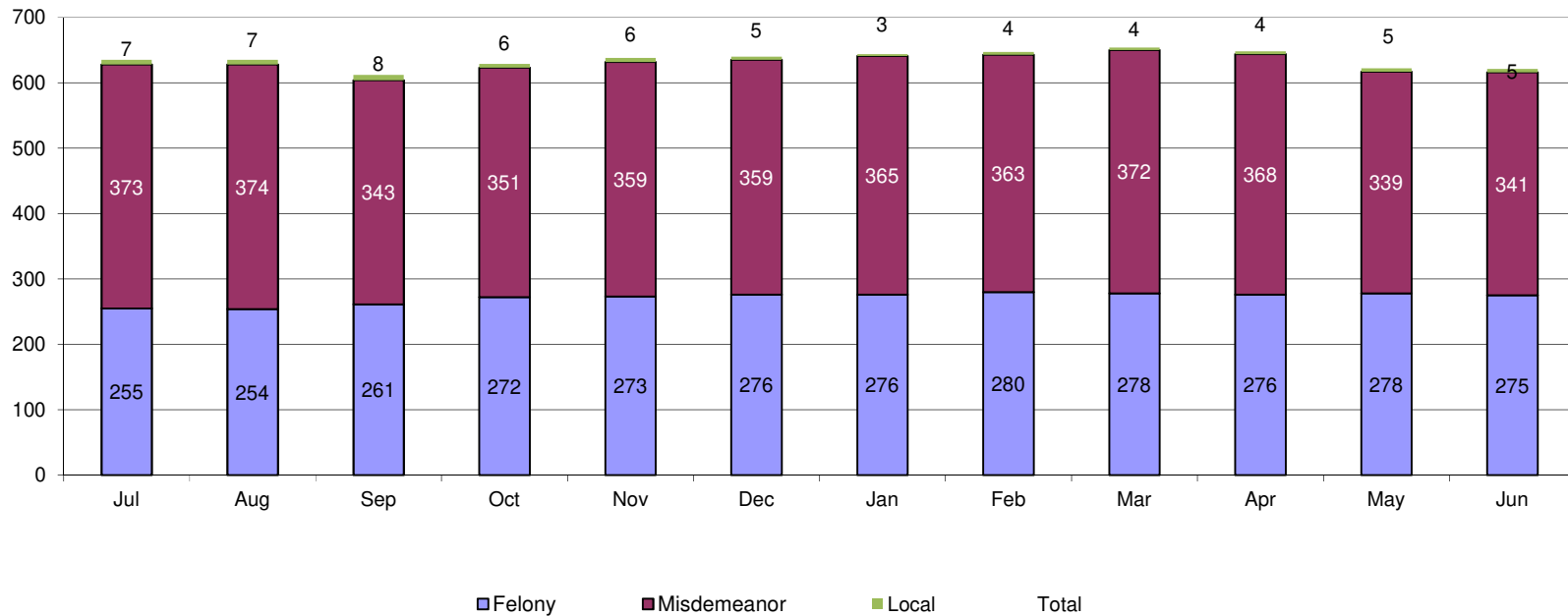


Juvenile Intensive Supervision Probation Youth on Last Day of Month FY 2019

	Jul	Aug	Sep	Oct	Nov	Dec	Jan	Feb	Mar	Apr	May	Jun	Avg of Total
Felony	255	254	261	272	273	276	276	280	278	276	278	275	271
Misdemeanor	373	374	343	351	359	359	365	363	372	368	339	341	359
Local	7	7	8	6	6	5	3	4	4	4	5	5	5
Total	635	635	612	629	638	640	644	647	654	648	622	621	635

Juvenile Intensive Supervision Probation (JISP) is a structured community-based supervision program that provides an additional sentencing option to Kansas' courts. Youth on JISP have either previously failed traditional court service probation or have committed a serious offense, but do not require an out-of-home placement or commitment to a juvenile correctional facility. This data represents youth on JISP on the last day of the month with the most recent offense type during FY 2016.

JISP Population and Most Recent Offense Type FY 2019



Juvenile Intensive Supervision Probation Youth by Judicial District on Last Day of the Month FY 2019

		1	2	3	4	5	6	7	8	9	10	11	12	13	14	16	15/17/23	18	19	20	21	22	24	25	26	27	28	29	30	31	Total	Average of Total
Jul	Felony	7	3	18	10	5	5	3	4	5	21	4	2	15	3	5	7	55	4	6	1	14	8	5	2	15	17	8	1	2	255	8.79
	Misdemeanor	24	3	4	6	6	5	5	10	4	61	14	2	16	4	14	21	61	5	22	3	4	18	16	8	17	4	10	2	4	373	12.86
	Local	0	0	0	0	0	0	0	0	0	0	0	0	0	0	2	0	5	0	0	0	0	0	0	0	0	0	0	0	0	7	0.24
	Total	31	6	22	16	11	10	8	14	9	82	18	4	31	7	21	28	121	9	28	4	18	26	21	10	32	21	18	3	6	635	21.90
Aug	Felony	8	3	19	10	4	3	4	5	5	20	2	2	12	3	7	8	51	4	5	2	14	2	10	5	2	15	21	7	1	254	8.76
	Misdemeanor	23	8	2	5	6	4	8	15	4	62	9	3	12	5	13	21	61	4	25	4	3	4	17	14	8	17	5	10	2	374	12.90
	Local	0	0	0	0	0	0	0	0	0	0	0	0	0	0	1	0	6	0	0	0	0	0	0	0	0	0	0	0	0	7	0.24
	Total	31	11	21	15	10	7	12	20	9	82	11	5	24	8	21	29	118	8	30	6	17	6	27	19	10	32	26	17	3	635	21.90
Sep	Felony	5	4	20	9	3	4	4	7	6	19	3	2	12	3	7	8	52	4	5	2	15	2	8	6	3	19	22	6	1	261	9.00
	Misdemeanor	23	8	4	6	5	3	8	13	2	51	7	3	13	3	12	22	57	4	24	3	3	4	15	14	6	19	3	6	2	343	11.83
	Local	0	0	0	0	0	0	0	0	0	0	0	0	0	0	1	0	7	0	0	0	0	0	0	0	0	0	0	0	0	8	0.28
	Total	28	12	24	15	8	7	12	20	8	70	10	5	25	6	20	30	116	8	29	5	18	6	23	20	9	38	25	12	3	612	21.10
Oct	Felony	4	7	19	8	2	5	5	7	5	19	2	3	11	5	7	8	53	4	5	2	17	2	9	8	2	20	26	6	1	272	9.38
	Misdemeanor	23	8	6	6	4	2	9	11	2	50	8	5	11	3	12	23	59	6	24	3	3	4	15	13	8	21	4	6	2	351	12.10
	Local	0	0	0	0	0	0	0	0	0	0	0	0	0	0	1	0	5	0	0	0	0	0	0	0	0	0	0	0	0	6	0.21
	Total	27	15	25	14	6	7	14	18	7	69	10	8	22	8	20	31	117	10	29	5	20	6	24	21	10	41	30	12	3	629	21.69
Nov	Felony	4	9	19	8	3	5	6	6	5	18	2	6	10	6	7	8	53	5	5	2	17	2	8	8	1	22	21	6	1	273	9.41
	Misdemeanor	24	9	7	8	5	2	7	12	2	53	5	5	14	6	11	23	57	8	24	2	2	4	15	12	6	23	5	6	2	359	12.38
	Local	0	0	0	0	0	0	0	0	0	0	0	0	0	0	1	0	5	0	0	0	0	0	0	0	0	0	0	0	0	6	0.21
	Total	28	18	26	16	8	7	13	18	7	71	7	11	24	12	19	31	115	13	29	4	19	6	23	20	7	45	26	12	3	638	22.00
Dec	Felony	5	8	19	12	4	5	7	7	5	18	2	7	9	7	8	9	53	5	6	3	14	2	8	7	1	19	19	6	1	276	9.52
	Misdemeanor	22	9	7	9	6	2	5	14	3	49	3	5	13	7	12	27	57	10	22	4	2	4	13	13	5	21	6	7	2	359	12.38
	Local	0	0	0	0	0	0	0	0	0	0	0	0	0	0	0	0	5	0	0	0	0	0	0	0	0	0	0	0	0	5	0.17
	Total	27	17	26	21	10	7	12	21	8	67	5	12	22	14	20	36	115	15	28	7	16	6	21	20	6	40	25	13	3	640	22.07
Jan	Felony	4	8	20	11	3	5	6	6	6	18	3	7	9	7	9	9	51	8	5	4	14	2	8	6	1	19	20	6	1	276	9.52
	Misdemeanor	22	5	8	10	7	2	5	10	3	53	3	4	12	10	11	29	67	8	23	3	2	4	11	12	4	20	7	9	1	365	12.59
	Local	0	0	0	0	0	0	0	0	0	0	0	0	0	0	0	0	3	0	0	0	0	0	0	0	0	0	0	0	0	3	0.10
	Total	26	13	28	21	10	7	11	16	9	71	6	11	21	17	20	38	121	16	28	7	16	6	19	18	5	39	27	15	2	644	22.21
Feb	Felony	4	8	22	10	2	5	6	7	7	17	4	8	10	6	10	8	56	8	5	4	13	1	7	4	1	21	20	5	1	280	9.66
	Misdemeanor	23	6	8	11	4	2	6	12	3	54	2	3	11	11	14	29	65	9	22	3	2	4	11	8	4	20	8	8		363	12.96
	Local	0	0	0	0	0	0	0	0	0	0	0	0	0	0	0	0	4	0	0	0	0	0	0	0	0	0	0	0	0	4	0.14
	Total	27	14	30	21	6	7	12	19	10	71	6	11	21	17	24	37	125	17	27	7	15	5	18	12	5	41	28	13	1	647	22.31
Mar	Felony	5	7	18	8	2	4	5	6	8	21	5	8	11	6	10	8	53	8	6	5	13	1	7	5		20	20	5	3	278	9.93
	Misdemeanor	22	6	12	11	6	1	9	15	3	54	2	3	9	10	18	27	63	9	18	2	2	4	12	9	6	22	9	7	1	372	12.83
	Local	0	0	0	0	0	0	0	0	0	0	0	0	0	0	0	0	4	0	0	0	0	0	0	0	0	0	0	0	0	4	0.14
	Total	27	13	30	19	8	5	14	21	11	75	7	11	20	16	28	35	120	17	24	7	15	5	19	14	6	42	29	12	4	654	22.55
Apr	Felony	3	8	17	8	2	4	4	7	9	24	5	8	10	7	11	8	52	9	4	5	10	1	7	6		18	19	6	4	276	9.86
	Misdemeanor	20	7	15	12	8	2	11	12	3	45	4	2	6	12	19	27	65	10	16	1	1	4	11	11	6	20	10	6	2	368	12.69
	Local	0	0	0	0	0	0	0	0	0	0	0	0	0	0	0	0	4	0	0	0	0	0	0	0	0	0	0	0	0	4	0.14
	Total	23	15	32	20	10	6	15	19	12	69	9	10	16	19	30	35	121	19	20	6	11	5	18	17	6	38	29	12	6	648	22.34
May	Felony	5	5	18	9	3	4	3	6	6	25	6	7	11	6	11	6	54	8	7	6	9	1	4	6	2	18	23	5	4	278	9.59
	Misdemeanor	17	5	16	13	9	2	10	14	2	43	6	2	6	12	16	28	56	9	11	1	1	3	9	8	5	19	8	6	2	339	11.69
	Local	0	0	0	0	0	0	0	0	0	0	0	0	0	0	0	0	5	0	0	0	0	0	0	0	0	0	0	0	0	5	0.17
	Total	22	10	34	22	12	6	13	20	8	68	12	9	17	18	27	34	115	17	18	7	10	4	13	14	7	37	31	11	6	622	21.45
Jun	Felony	4	6	18	8	2	4	3	6	7	25	5	10	11	6	10	6	52	6	7	5	8	1	4	6	3	20	23	5	4	275	9.48
	Misdemeanor	15	5	16	11	12	2	7	12	2	39	9	3	10	9	16	25	61	9	10	2	1	3	10	8	7	18	11	5	3	341	11.76
	Local	0	0	0	0	0	0	0	0	0	0	0	0	0	0	0	0	5	0	0	0	0	0	0	0	0	0	0	0	0	5	0.17
	Total	19	11	34	19	14	6	10	18	9	64	14	13	21	15	26	31	118	15	17	7	9	4	14	14	10	38	34	10	7 </		