

Statewide Month End Population: Placements for Youth in the Custody of DOC on the Last Day of Each Month

Youth are placed in DOC custody by the court and may be placed at home, with relatives, in a juvenile correctional facility or in another type of community placement. Data below is summary information for youth in DOC custody on the last day of a month with comparative data from previous years.

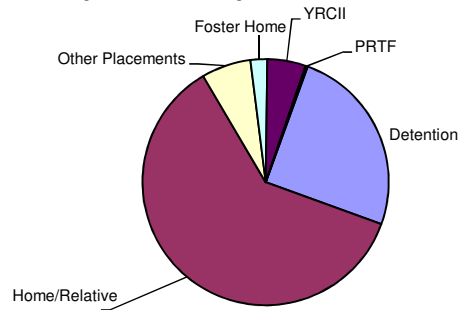
Placement Summary

State Fiscal Year 2019	Jul	Aug	Sep	Oct	Nov	Dec	Jan	Feb	Mar	Apr	May	Jun	FY19 Avg.	FY19 Plcmt Avg As % of Total
Detention	47	42	43	45	49	39	35	38	34	26	25	31	37.8	22.3%
Facility/Other ¹	15	15	14	9	5	7	10	9	7	9	9	9	9.8	5.8%
Foster Home	8	3	4	3	3	3	3	3	3	3	2	2	3.3	2.0%
Home/Relative	103	103	101	101	98	100	96	90	80	78	77	82	92.4	54.4%
Juvenile Justice Foster Care	0	1	0	0	0	0	0	0	0	0	0	0	0.1	0.0%
AWOL	22	21	21	21	18	17	15	15	14	16	17	14	17.6	10.4%
Psychiatric Residential Treatment Center	0	0	0	1	1	1	1	1	0	0	0	0	0.4	0.2%
Not Reported	1	1	0	0	1	0	0	0	0	1	3	1	0.7	0.4%
Youth Residential Center II	9	11	13	13	11	8	6	3	4	5	5	4	7.7	4.5%
Total Custody Population	205	197	196	193	186	175	166	159	142	138	138	143	169.8	100.0%
FY18 Total Population	442	437	416	403	415	375	341	316	298	269	244	225	348.4	100.0%
% Change from Previous Year	-53.6%	-54.9%	-52.9%	-52.1%	-55.2%	-53.3%	-51.3%	-49.7%	-52.3%	-48.7%	-43.4%	-36.4%	-51.3%	

*Does not include JCF youth

¹ Includes Emergency Shelter, Maternity or Substance Abuse Residential Treatment, Hospital, Independent Living

FY19 Average Placement Setting Distribution for DOCCustody Youth

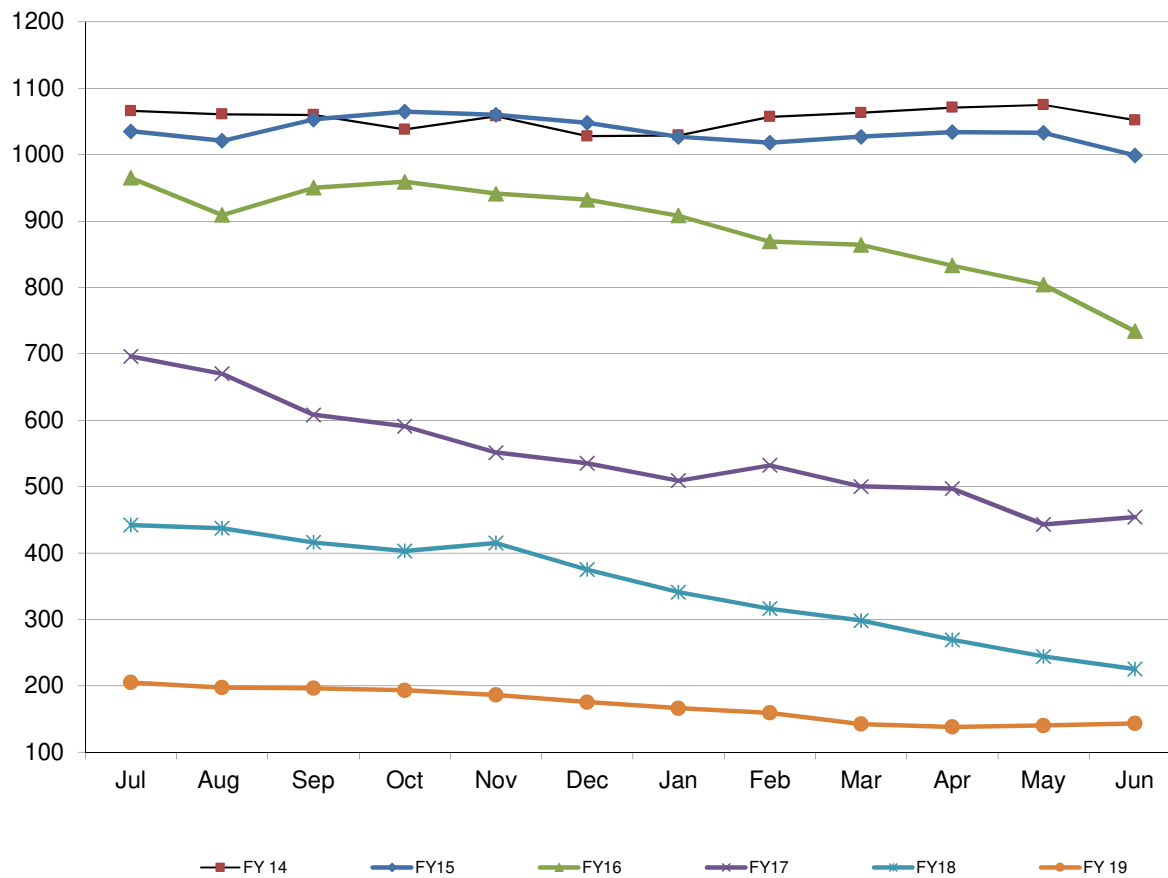


Fiscal Year Flashback	FY15 Mo. Avg.	FY16 Mo. Avg.	FY17 Mo. Avg.	FY18 Mo. Avg.
Juvenile Correctional Facility	274.3	232.0	214.0	187.0
Detention	151.4	142.4	96.4	59.8
Facility/Other*	79.5	70.8	37.4	20.8
Foster Home	27.6	20.3	14.7	14.5
Home/Relative	287.8	252.3	194.4	159.5
Juvenile Justice Foster Care	50.9	41.8	27.8	9.1
AWOL	103.2	109.0	65.4	39.8
Psychiatric Residential Treatment Center	12.5	9.1	5.2	3.8
Not Reported	12.3	5.1	6.2	1.4
Youth Residential Center II	309.3	238.2	101.3	39.7
Total Custody Population	1308.8	1121.0	762.8	535.4
Total Custody Population (no JCF)	1034.5	889.0	548.8	348.4

**Statewide Month End Population: Placements for Youth in the Custody of DOC on the Last Day of Each Month
Placement Detail**

Placements	Jul	Aug	Sep	Oct	Nov	Dec	Jan	Feb	Mar	Apr	May	Jun	Avg	Avg as a %
Community Integration Program	0	0	0	0	0	0	1	0	0	0	0	0	0.1	0.05%
Juvenile Justice Foster Care	0	1	0	0	0	0	0	0	0	0	0	0	0.1	0%
Detention	47	42	43	45	49	39	35	38	34	26	25	31	37.8	22%
Emergency Foster Care	0	0	0	0	0	0	0	0	0	0	0	0	0.0	0%
Emergency Shelter	1	1	1	1	0	0	0	0	0	0	1	0	0.4	0.25%
Family Resource Home	0	0	1	0	0	0	0	0	0	0	0	1	0.2	0.10%
Home	96	98	95	96	93	97	92	87	77	76	77	79	88.6	52%
Hospital	0	1	1	1	0	0	0	0	0	0	0	0	0.3	0.15%
Kinship/Non-Related Kin Care	3	2	2	2	2	0	1	0	0	0	0	0	1.0	0.59%
Not Reported	1	1	0	0	1	0	0	0	0	1	3	1	0.7	0%
Psychiatric Residential Treatment Facility	0	0	0	1	1	1	1	1	0	0	0	0	0.4	0%
Relative Placement	4	3	4	3	3	3	3	3	3	2	2	3	3.0	1.76%
Residential Drug/Alcohol Treatment	0	1	1	0	1	1	1	1	0	1	0	0	0.6	0.34%
Residential Maternity Group Home	0	0	0	0	0	0	0	0	0	0	0	0	0.0	0.00%
Runaway/ AWOL	22	21	21	21	18	17	15	15	14	16	17	14	17.6	10%
Sanction House	1	1	0	0	1	0	0	0	0	1	1	0	0.4	0.25%
Specialized Family Resource Home	2	0	0	0	0	0	0	0	0	0	0	0	0.2	0%
Therapeutic Foster Care	6	3	4	3	3	3	3	3	3	3	2	2	3.2	2%
Transitional Living Program	13	11	10	7	3	6	8	8	7	7	7	8	7.9	5%
Youth Residential Center II	9	11	13	13	11	8	6	3	4	5	5	4	7.7	5%
Total	205	197	196	193	186	175	166	159	142	138	140	143	170.0	100%

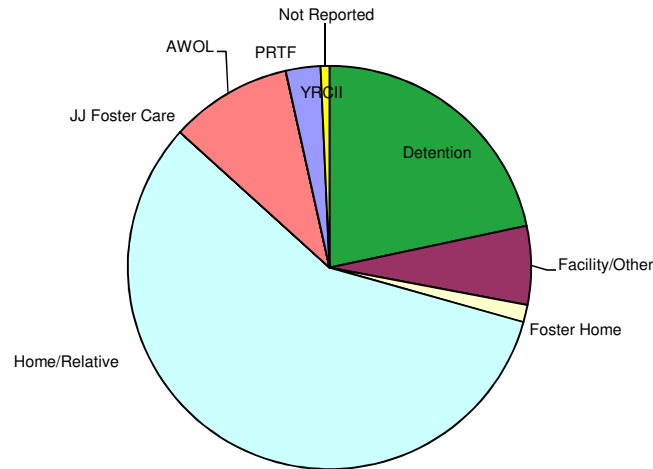
Statewide Juvenile Custody Month End Population



Statewide Month End Population: Placements for Youth in the Custody of DOC on June 30, 2019 by Judicial District

	Judicial District																															Tot	%
	1	2	3	4	5	6	7	8	9	10	11	12	13	14	16	15/17/23	18	19	20	21	22	24	25	26	27	28	29	30	31				
Detention	1	0	4	3	0	0	0	1	2	1	1	0	0	0	0	1	8	0	0	0	0	0	0	0	0	0	9	0	0	0	31	21.7%	
Facility/Other	0	0	0	0	0	0	0	0	0	0	0	0	1	0	0	0	5	0	0	0	0	0	1	0	1	0	1	0	0	9	6.3%		
Foster Home	0	0	1	0	0	0	0	0	0	0	0	0	0	0	0	0	0	0	0	0	0	0	1	0	0	0	0	0	0	2	1.4%		
Home/Relative	6	2	8	3	1	1	0	1	1	8	1	1	3	0	2	1	18	3	4	1	0	1	1	3	4	0	6	2	0	82	57.3%		
Juvenile Justice Foster Care	0	0	0	0	0	0	0	0	0	0	0	0	0	0	0	0	0	0	0	0	0	0	0	0	0	0	0	0	0	0	0.0%		
AWOL	3	0	0	0	0	0	0	0	0	0	1	0	0	0	0	0	4	0	1	0	0	0	1	0	0	4	0	0	14	9.8%			
Psychiatric Residential Treatment Facility	0	0	0	0	0	0	0	0	0	0	0	0	0	0	0	0	0	0	0	0	0	0	0	0	0	0	0	0	0	0	0.0%		
Youth Residential Center II	0	0	0	0	0	0	1	0	0	0	0	0	1	0	0	0	0	0	1	1	0	0	0	0	0	0	0	0	0	4	2.8%		
Not Reported	0	0	0	0	0	0	0	0	0	0	0	0	0	0	0	0	0	0	0	0	0	0	0	0	0	1	0	0	1	0.7%			
Total	10	2	13	6	1	1	0	3	3	9	3	1	4	1	2	2	35	3	6	2	0	1	4	3	5	13	8	2	0	143	100.0%		

Month End Placement Distribution



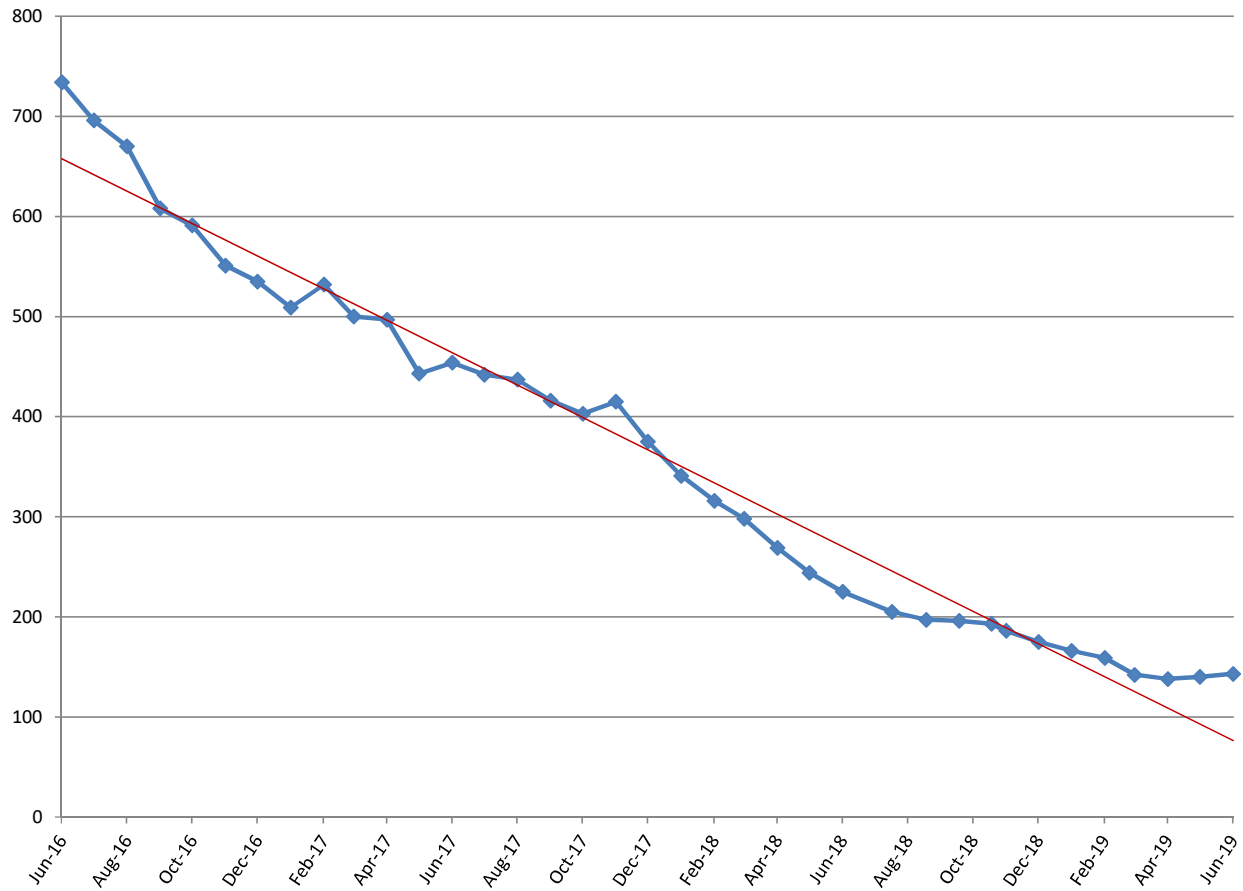
Length of Stay for Youth Whose Placement Type Ended During the FY 2019 Month

		Jul	Aug	Sep	Oct	Nov	Dec	Jan	Feb	Mar	Apr	May	Jun	Avg
PRTF	# placements	0	0	0	0	0	0	0	0	0	0	0	0	0.00
	Average # days	NA	NA	NA	NA	NA	NA	NA	NA	NA	NA	NA	NA	NA
	Median # days	NA	NA	NA	NA	NA	NA	NA	NA	NA	NA	NA	NA	NA
YRCII	# placements	2	3	1	1	1	3	1	2	1	0	3	2	1.67
	Average # days	112.5	149.7	18.0	162.0	92.0	176.7	27.0	45.5	34.0	NA	100.0	35.0	86.58
	Median # days	112.5	76.0	18.0	162.0	92.0	161.0	27.0	45.5	34.0	NA	147.0	35.0	76.00

Length of Stay for Youth in Respective Placement Type on the Last Day of the Month During FY 2019

		Jul	Aug	Sep	Oct	Nov	Dec	Jan	Feb	Mar	Apr	May	Jun	Avg.
PRTF	# youth	0	0	0	1	1	1	1	1	0	0	0	0	0.42
	Average # days	NA	NA	NA	14.0	16.2	75.0	106.0	134.0	NA	NA	NA	NA	69.03
	Median # days	NA	NA	NA	14.0	16.2	75.0	106.0	134.0	NA	NA	NA	NA	69.04
YRCII	# youth	9	11	13	13	8	4	2	3	4	4	5	4	6.67
	Average # days	121.0	60.5	103.4	121.5	107.5	85.5	30.0	58.0	67.0	97.0	48.4	64.5	80.36
	Median # days	70.0	62.0	90.0	104.0	65.5	65.5	30.0	58.0	89.0	113.0	21.0	34.5	65.50

Custody Population Trend



AWOL Population Month-End Trend

Linear (No. of Juveniles)

