

# Juvenile Correctional Facility Population Activity

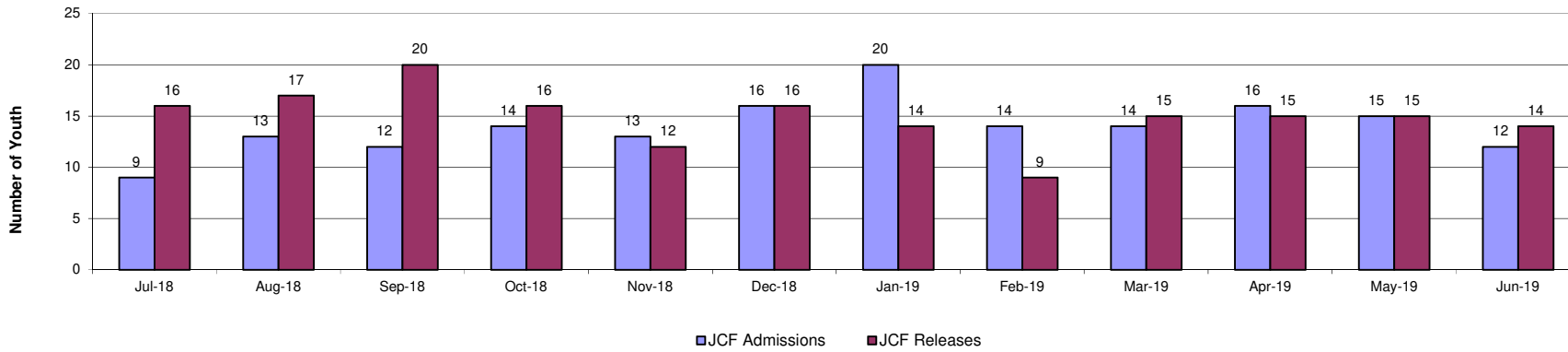
Fiscal Year 2019

Releases in FY 2019 are More than Admissions by 6.5%

## Statewide JCF Activity Summary

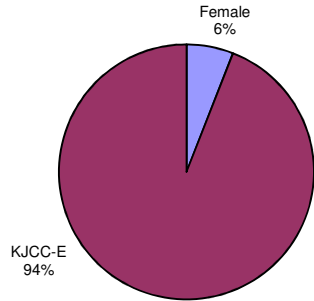
	Jul-18	Aug-18	Sep-18	Oct-18	Nov-18	Dec-18	Jan-19	Feb-19	Mar-19	Apr-19	May-19	Jun-19	Total	FY19 Avg	FY18 Avg
JCF Admissions	9	13	12	14	13	16	20	14	14	16	15	12	168	14.0	14.3
JCF Releases	16	17	20	16	12	16	14	9	15	15	15	14	179	14.9	17.2
<b>Month End Population</b>	<b>171</b>	<b>167</b>	<b>159</b>	<b>157</b>	<b>158</b>	<b>158</b>	<b>164</b>	<b>168</b>	<b>167</b>	<b>168</b>	<b>168</b>	<b>166</b>	1971	<b>164.3</b>	<b>186.0</b>

Statewide JCF Admissions and Releases FY19

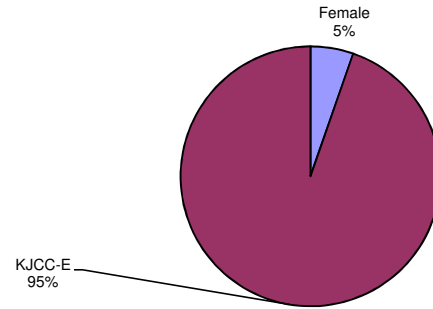


**Statewide JCF Month End Population**

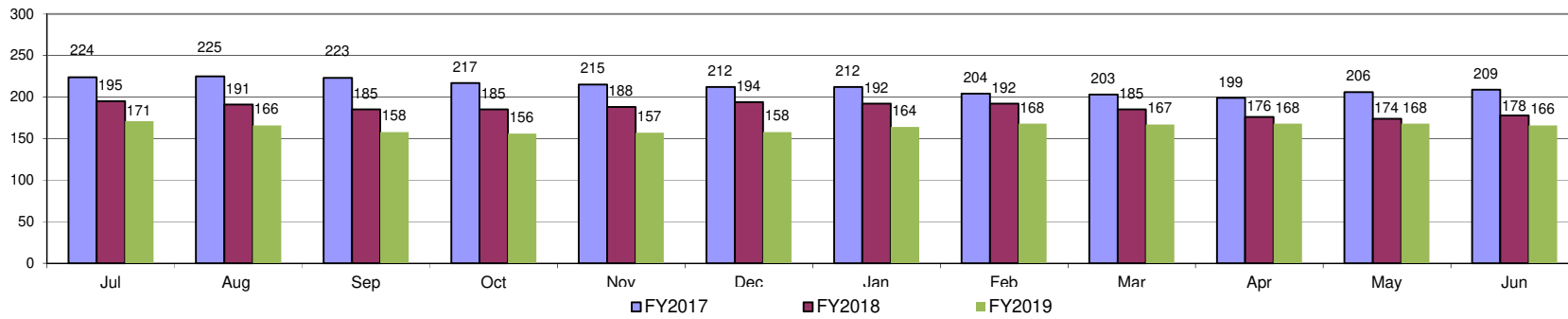
**Current Month 2019 Average:  
Youth JCF Placement Distribution**



**FY19 Average:  
Youth JCF Placement Distribution**



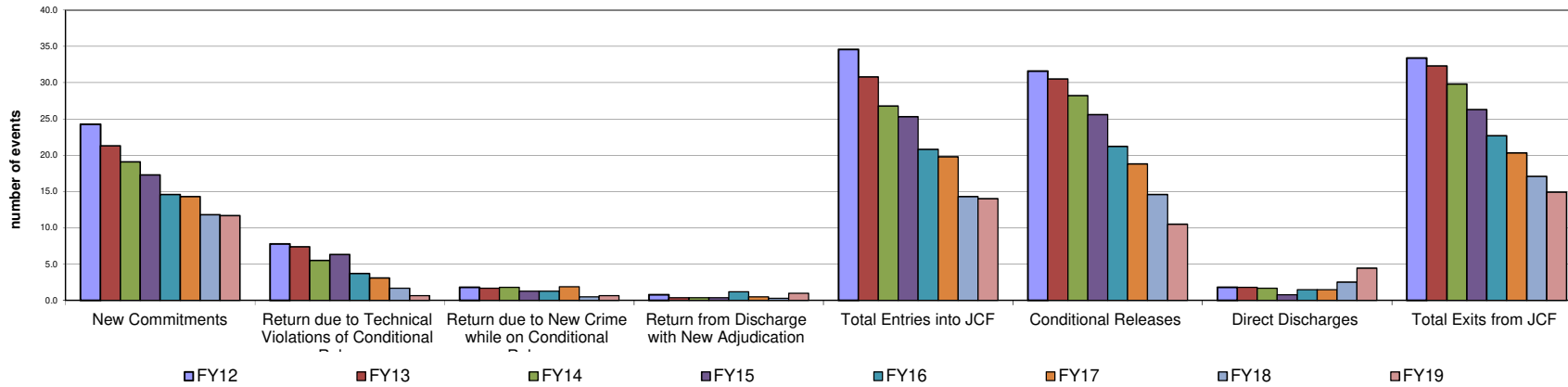
**Statewide Juvenile Correctional Facility Month End Population**



**Fiscal Year Flashback  
Census Events: Average Monthly Frequency**

	FY08	FY09	FY10	FY11	FY12	FY13	FY14	FY15	FY16	FY17	FY18	FY19
New Commitments	25.8	23.7	21.3	22.1	24.3	21.3	19.1	17.3	14.6	14.3	11.8	11.7
Return due to Technical Violations of Conditional Release	8.7	11.0	8.5	7.6	7.8	7.4	5.5	6.3	3.7	3.1	1.7	0.7
Return due to New Crime while on Conditional Release	1.8	1.8	2.5	2.2	1.8	1.7	1.8	1.3	1.3	1.9	0.5	0.7
Return from Discharge with New Adjudication	0.7	1.0	1.1	1.1	0.8	0.4	0.4	0.4	1.2	0.5	0.3	1.0
<b>Total Entries into JCF</b>	<b>37.0</b>	<b>37.5</b>	<b>33.4</b>	<b>32.8</b>	<b>34.6</b>	<b>30.8</b>	<b>26.8</b>	<b>25.3</b>	<b>20.8</b>	<b>19.8</b>	<b>14.3</b>	<b>14.0</b>
Conditional Releases	40.5	37.7	33.2	30.5	31.6	30.5	28.2	25.6	21.2	18.8	14.6	10.5
Direct Discharges	1.5	1.6	1.7	2.3	1.8	1.8	1.7	0.8	1.5	1.5	2.5	4.4
<b>Total Exits from JCF</b>	<b>42.0</b>	<b>39.3</b>	<b>34.8</b>	<b>32.8</b>	<b>33.4</b>	<b>32.3</b>	<b>29.8</b>	<b>26.3</b>	<b>22.7</b>	<b>20.3</b>	<b>17.1</b>	<b>14.9</b>

**Statewide Average JCF Census # Events Across Years**



JCF Detail: Statewide

<b>Youth Entering All JCF</b>	<b>Jul-18</b>	<b>Aug-18</b>	<b>Sep-18</b>	<b>Oct-18</b>	<b>Nov-18</b>	<b>Dec-18</b>	<b>Jan-19</b>	<b>Feb-19</b>	<b>Mar-19</b>	<b>Apr-19</b>	<b>May-19</b>	<b>Jun-19</b>	<b>Total</b>	<b>Monthly Avg</b>
New Commitments	7	11	10	11	11	12	18	11	11	13	13	12	140	11.7
Return due to Technical Violations of Conditional Release	1	1	0	1	0	2	0	2	0	1	0	0	8	0.7
Return due to New Crime while on Conditional Release	0	0	0	2	1	0	1	0	2	1	1	0	8	0.7
Return from Discharge with New Adjudication	1	1	2	0	1	2	1	1	1	1	1	0	12	1.0
<b>Total Entries into JCF</b>	<b>9</b>	<b>13</b>	<b>12</b>	<b>14</b>	<b>13</b>	<b>16</b>	<b>20</b>	<b>14</b>	<b>14</b>	<b>16</b>	<b>15</b>	<b>12</b>	<b>168</b>	<b>14.0</b>
<b>Youth Exiting Facility</b>	<b>Jul-18</b>	<b>Aug-18</b>	<b>Sep-18</b>	<b>Oct-18</b>	<b>Nov-18</b>	<b>Dec-18</b>	<b>Jan-19</b>	<b>Feb-19</b>	<b>Mar-19</b>	<b>Apr-19</b>	<b>May-19</b>	<b>Jun-19</b>	<b>Total</b>	<b>Monthly Avg</b>
Conditional Releases	11	13	18	12	7	8	13	5	8	9	12	10	126	10.5
Direct Discharges	5	4	2	4	5	8	1	4	7	6	3	4	53	4.4
<b>Total Exits from Facility</b>	<b>16</b>	<b>17</b>	<b>20</b>	<b>16</b>	<b>12</b>	<b>16</b>	<b>14</b>	<b>9</b>	<b>15</b>	<b>15</b>	<b>15</b>	<b>14</b>	<b>179</b>	<b>14.9</b>
<b>Month End Population</b>	<b>Jul-18</b>	<b>Aug-18</b>	<b>Sep-18</b>	<b>Oct-18</b>	<b>Nov-18</b>	<b>Dec-18</b>	<b>Jan-19</b>	<b>Feb-19</b>	<b>Mar-19</b>	<b>Apr-19</b>	<b>May-19</b>	<b>Jun-19</b>	<b>Total</b>	<b>Monthly Avg</b>
Total # Youth placed in JCF on last day of the month	171	167	159	157	158	158	164	168	167	168	168	166	166	164.3

JCF Detail: Females

<b>Youth Entering Females</b>	<b>Jul-18</b>	<b>Aug-18</b>	<b>Sep-18</b>	<b>Oct-18</b>	<b>Nov-18</b>	<b>Dec-18</b>	<b>Jan-19</b>	<b>Feb-19</b>	<b>Mar-19</b>	<b>Apr-19</b>	<b>May-19</b>	<b>Jun-19</b>	<b>Total</b>	<b>Monthly Avg</b>
New Commitments	0	1	1	0	0	1	1	0	1	4	0	1	10	0.8
Return due to Technical Violations of Conditional Release	0	0	0	0	0	0	0	1	0	0	0	0	1	0.1
Return due to New Crime while on Conditional Release	0	0	0	0	0	0	0	0	0	0	0	0	0	0.0
Return from Discharge with New Adjudication	0	0	0	0	0	0	0	0	0	0	0	0	0	0.0
Transferring In from another JCF (N/A)	0	0	0	0	0	0	0	0	0	0	0	0	0	0.0
<b>Total Entries into JCF</b>	<b>0</b>	<b>1</b>	<b>1</b>	<b>0</b>	<b>0</b>	<b>1</b>	<b>1</b>	<b>1</b>	<b>1</b>	<b>4</b>	<b>0</b>	<b>1</b>	<b>11</b>	<b>0.9</b>
<b>Youth Exiting Facility</b>	<b>Jul-18</b>	<b>Aug-18</b>	<b>Sep-18</b>	<b>Oct-18</b>	<b>Nov-18</b>	<b>Dec-18</b>	<b>Jan-19</b>	<b>Feb-19</b>	<b>Mar-19</b>	<b>Apr-19</b>	<b>May-19</b>	<b>Jun-19</b>	<b>Total</b>	<b>Monthly Avg</b>
Transferred out to another JCF (N/A)	0	0	0	0	0	0	0	0	0	0	0	0	0	N/A
Conditional Releases	0	0	1	2	1	0	2	2	0	0	0	0	8	0.7
Direct Discharges	0	0	0	1	0	0	0	0	1	0	0	0	2	0.2
<b>Total Exits from Facility</b>	<b>0</b>	<b>0</b>	<b>1</b>	<b>3</b>	<b>1</b>	<b>0</b>	<b>2</b>	<b>2</b>	<b>1</b>	<b>0</b>	<b>0</b>	<b>0</b>	<b>10</b>	<b>0.8</b>
<b>Month End Population</b>	<b>Jul-18</b>	<b>Aug-18</b>	<b>Sep-18</b>	<b>Oct-18</b>	<b>Nov-18</b>	<b>Dec-18</b>	<b>Jan-19</b>	<b>Feb-19</b>	<b>Mar-19</b>	<b>Apr-19</b>	<b>May-19</b>	<b>Jun-19</b>	<b>Total</b>	<b>Monthly Avg</b>
Total # Youth placed in JCF on last day of the month	10	11	11	8	7	8	7	6	6	10	10	11	11	8.8

JCF Detail: Kansas Juvenile Correctional Complex Males

<b>Youth Entering KJCC</b>	<b>Jul-18</b>	<b>Aug-18</b>	<b>Sep-18</b>	<b>Oct-18</b>	<b>Nov-18</b>	<b>Dec-18</b>	<b>Jan-19</b>	<b>Feb-19</b>	<b>Mar-19</b>	<b>Apr-19</b>	<b>May-19</b>	<b>Jun-19</b>	<b>Total</b>	<b>Monthly Avg</b>
New Commitments	7	10	8	11	11	11	17	11	10	9	13	11	129	10.8
Return due to Technical Violations of Conditional Release	1	1	0	1	0	2	0	1	0	1	0	0	7	0.6
Return due to new crime while on conditional release	0	0	0	0	1	0	1	0	1	1	1	0	5	0.4
Return from Discharge with New Adjudication	1	1	2	2	1	2	1	1	2	1	1	0	15	1.3
Transferring In from another JCF	0	0	0	0	0	0	0	0	0	0	0	0	0	0.0
<b>Total Entries into JCF</b>	<b>9</b>	<b>12</b>	<b>10</b>	<b>14</b>	<b>13</b>	<b>15</b>	<b>19</b>	<b>13</b>	<b>13</b>	<b>12</b>	<b>15</b>	<b>11</b>	<b>156</b>	<b>13.0</b>
<b>Youth Exiting Facility</b>	<b>Jul-18</b>	<b>Aug-18</b>	<b>Sep-18</b>	<b>Oct-18</b>	<b>Nov-18</b>	<b>Dec-18</b>	<b>Jan-19</b>	<b>Feb-19</b>	<b>Mar-19</b>	<b>Apr-19</b>	<b>May-19</b>	<b>Jun-19</b>	<b>Total</b>	<b>Monthly Avg</b>
Transferred out to another JCF	0	0	0	0	0	0	0	0	0	0	0	0	0	0.0
Conditional Releases	11	13	17	10	6	8	11	4	8	9	12	10	119	9.9
Direct Discharges	5	4	2	3	5	8	1	3	6	6	3	4	50	4.2
<b>Total Exits from Facility</b>	<b>16</b>	<b>17</b>	<b>19</b>	<b>13</b>	<b>11</b>	<b>16</b>	<b>12</b>	<b>7</b>	<b>14</b>	<b>15</b>	<b>15</b>	<b>14</b>	<b>169</b>	<b>14.1</b>
<b>Month End Population</b>	<b>Jul-18</b>	<b>Aug-18</b>	<b>Sep-18</b>	<b>Oct-18</b>	<b>Nov-18</b>	<b>Dec-18</b>	<b>Jan-19</b>	<b>Feb-19</b>	<b>Mar-19</b>	<b>Apr-19</b>	<b>May-19</b>	<b>Jun-19</b>	<b>Total</b>	<b>Monthly Avg</b>
Total # Youth placed in JCF on last day of the month	161	156	148	149	151	150	157	162	161	158	158	155	155	155.5

**JCF Month End Summary Management Information  
For Youth Placed in JCF on Last Day of the Month in FY19**

**Statewide Summary**

Fiscal Year 2019 Month End

<b>Length of Stay &amp; Age</b>	<b>Jul</b>	<b>Aug</b>	<b>Sep</b>	<b>Oct</b>	<b>Nov</b>	<b>Dec</b>	<b>Jan</b>	<b>Feb</b>	<b>Mar</b>	<b>Apr</b>	<b>May</b>	<b>Jun</b>
Average Months for all Youth	10.5	10.3	10.5	10.4	10.6	10.5	9.9	9.8	10.4	10.6	10.4	10.6
Median Months for all Youth	8.7	8.6	8.5	8.4	8.6	8.1	7.0	6.5	7.1	7.1	6.8	7.1
Average Age All Youth	17.7	17.6	17.7	17.6	17.7	17.7	17.7	17.7	17.7	17.8	17.8	17.7
Median Age All Youth	17.8	17.8	17.8	17.7	17.8	17.8	17.9	18.0	17.8	17.9	17.8	17.8

**Female Summary**

Fiscal Year 2019 Month End

<b>Length of Stay &amp; Age</b>	<b>Jul</b>	<b>Aug</b>	<b>Sep</b>	<b>Oct</b>	<b>Nov</b>	<b>Dec</b>	<b>Jan</b>	<b>Feb</b>	<b>Mar</b>	<b>Apr</b>	<b>May</b>	<b>Jun</b>
Average Months in JCF	10.6	10.5	11.2	12.5	12.8	12.2	11.2	10.2	11.1	7.4	8.5	9.2
Median Months In JCF	10.4	8.7	9.7	13.4	11.7	10.7	9.8	8.0	9.1	3.0	4.0	5.0
Average Age	16.9	16.9	17.2	17.1	17.0	17.2	17.3	17.6	17.5	17.7	17.8	17.8
Median Age	16.8	16.9	17.0	17.0	17.0	17.1	17.3	17.6	17.4	17.8	17.9	17.9

**Male Summary**

Fiscal Year 2019 Month End

<b>Length of Stay &amp; Age</b>	<b>Jul</b>	<b>Aug</b>	<b>Sep</b>	<b>Oct</b>	<b>Nov</b>	<b>Dec</b>	<b>Jan</b>	<b>Feb</b>	<b>Mar</b>	<b>Apr</b>	<b>May</b>	<b>Jun</b>
Average Months in JCF	10.5	10.3	10.5	10.3	10.5	10.4	9.8	9.7	10.4	10.5	10.5	10.7
Median Months In JCF	8.7	8.4	8.5	8.3	8.5	8.0	8.9	6.6	7.1	7.1	7.2	7.1
Average Age	17.7	17.7	17.7	17.7	17.7	17.7	17.7	17.7	17.7	17.8	17.8	17.7
Median Age	17.9	17.8	17.8	17.8	17.8	17.8	17.9	18.0	17.8	17.9	17.8	17.8

**Age of All JCF Youth  
July 2018 Month End Population**

