

Juvenile Correctional Facility Population Activity

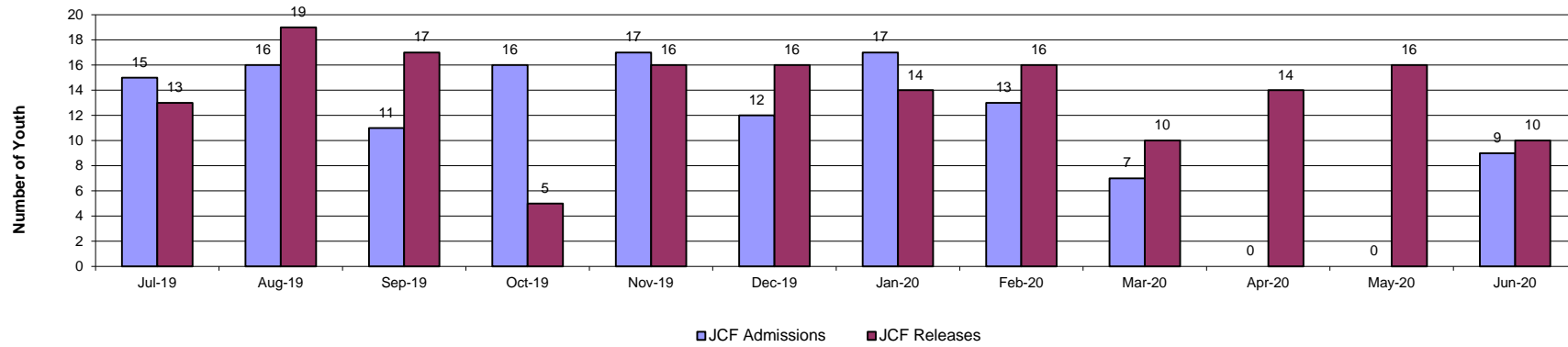
Fiscal Year 2020

Releases in FY 2020 are More than Admissions by 24.8%

Statewide JCF Activity Summary

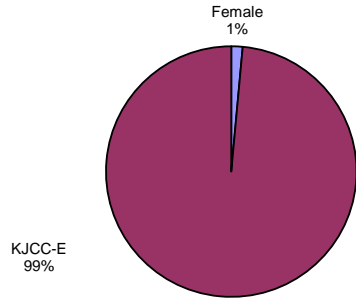
	Jul-19	Aug-19	Sep-19	Oct-19	Nov-19	Dec-19	Jan-20	Feb-20	Mar-20	Apr-20	May-20	Jun-20	Total	FY20 Avg	FY19 Avg
JCF Admissions	15	16	11	16	17	12	17	13	7	0	0	9	133	11.1	14.0
JCF Releases	13	19	17	5	16	16	14	16	10	14	16	10	166	13.8	14.9
Month End Population	168	165	159	170	171	168	171	167	170	154	139	137	1939	161.6	186.0

Statewide JCF Admissions and Releases FY20

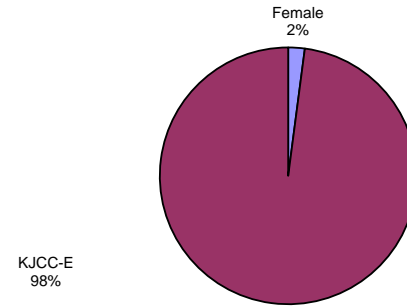


Statewide JCF Month End Population

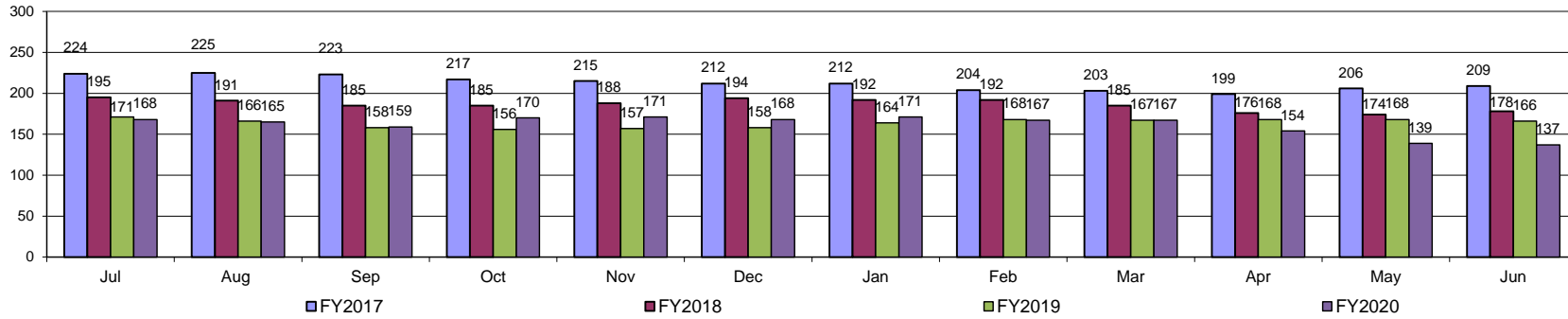
**Current Month FY20 Average:
Youth JCF Placement Distribution**



**FY20 Average:
Youth JCF Placement Distribution**



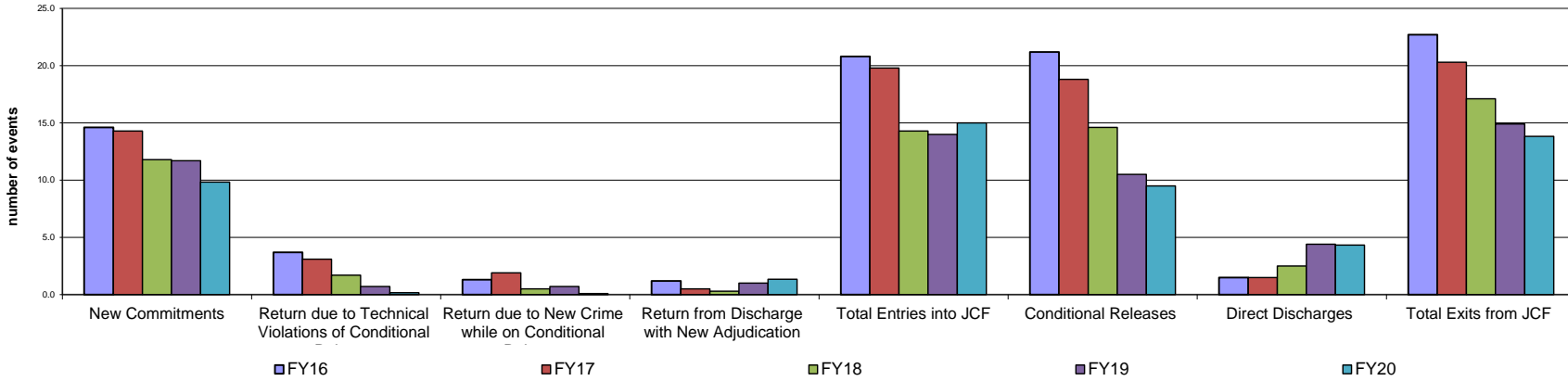
Statewide Juvenile Correctional Facility Month End Population



**Fiscal Year Flashback
Census Events: Average Monthly Frequency**

	FY09	FY10	FY11	FY12	FY13	FY14	FY15	FY16	FY17	FY18	FY19	FY20
New Commitments	23.7	21.3	22.1	24.3	21.3	19.1	17.3	14.6	14.3	11.8	11.7	9.8
Return due to Technical Violations of Conditional Release	11.0	8.5	7.6	7.8	7.4	5.5	6.3	3.7	3.1	1.7	0.7	0.2
Return due to New Crime while on Conditional Release	1.8	2.5	2.2	1.8	1.7	1.8	1.3	1.3	1.9	0.5	0.7	0.1
Return from Discharge with New Adjudication	1.0	1.1	1.1	0.8	0.4	0.4	0.4	1.2	0.5	0.3	1.0	1.3
Total Entries into JCF	37.5	33.4	32.8	34.6	30.8	26.8	25.3	20.8	19.8	14.3	14.0	15.0
Conditional Releases	37.7	33.2	30.5	31.6	30.5	28.2	25.6	21.2	18.8	14.6	10.5	9.5
Direct Discharges	1.6	1.7	2.3	1.8	1.8	1.7	0.8	1.5	1.5	2.5	4.4	4.3
Total Exits from JCF	39.3	34.8	32.8	33.4	32.3	29.8	26.3	22.7	20.3	17.1	14.9	13.8

Statewide Average JCF Census # Events Across Years



JCF Detail: Statewide

Youth Entering All JCF	Jul-19	Aug-19	Sep-19	Oct-19	Nov-19	Dec-19	Jan-20	Feb-20	Mar-20	Apr-20	May-20	Jun-20	Total	Monthly Avg
New Commitments	14	13	10	14	14	11	15	11	7	0	0	9	118	9.8
Return due to Technical Violations of Conditional Release	0	1	0	0	1	0	0	0	0	0	0	0	2	0.2
Return due to New Crime while on Conditional Release	0	0	0	0	0	0	0	0	1	0	0	0	1	0.1
Return from Discharge with New Adjudication	1	2	1	2	2	1	2	2	3	0	0	0	16	1.3
Total Entries into JCF	15	16	11	16	17	12	17	13	11	0	0	9	137	11.4
Youth Exiting Facility	Jul-19	Aug-19	Sep-19	Oct-19	Nov-19	Dec-19	Jan-20	Feb-20	Mar-20	Apr-20	May-20	Jun-20	Total	Monthly Avg
Conditional Releases	12	18	14	2	5	11	7	12	4	14	10	5	114	9.5
Direct Discharges	1	1	3	3	11	5	7	4	6	0	6	5	52	4.3
Total Exits from Facility	13	19	17	5	16	16	14	16	10	14	16	10	166	13.8
Month End Population	Jul-19	Aug-19	Sep-19	Oct-19	Nov-19	Dec-19	Jan-20	Feb-20	Mar-20	Apr-20	May-20	Jun-20	Total	Monthly Avg
Total # Youth placed in JCF on last day of the month	168	165	159	170	171	168	171	167	170	154	139	137	1939	161.6

JCF Detail: Females

Youth Entering Females	Jul-19	Aug-19	Sep-19	Oct-19	Nov-19	Dec-19	Jan-20	Feb-20	Mar-20	Apr-20	May-20	Jun-20	Total	Monthly Avg
New Commitments	1	0	0	0	1	0	3	0	0	0	0	0	5	0.4
Return due to Technical Violations of Conditional Release	0	0	0	0	1	0	0	0	0	0	0	0	1	0.1
Return due to New Crime while on Conditional Release	0	0	0	0	0	0	0	0	0	0	0	0	0	0.0
Return from Discharge with New Adjudication	0	0	0	0	0	0	0	0	0	0	0	0	0	0.0
Transferring In from another JCF (N/A)	0	0	0	0	0	0	0	0	0	0	0	0	0	0.0
Total Entries into JCF	1	0	0	0	2	0	3	0	0	0	0	0	6	0.5
Youth Exiting Facility	Jul-19	Aug-19	Sep-19	Oct-19	Nov-19	Dec-19	Jan-20	Feb-20	Mar-20	Apr-20	May-20	Jun-20	Total	Monthly Avg
Conditional Releases	0	5	1	0	0	0	0	1	0	0	1	0	8	0.7
Direct Discharges	0	0	1	0	1	0	1	0	0	2	1	1	7	0.6
Total Exits from Facility	0	5	2	0	1	0	1	1	0	2	2	1	15	1.3
Month End Population	Jul-19	Aug-19	Sep-19	Oct-19	Nov-19	Dec-19	Jan-20	Feb-20	Mar-20	Apr-20	May-20	Jun-20	Total	Monthly Avg
Total # Youth placed in JCF on last day of the month	12	7	5	5	6	6	8	7	7	5	3	2	73	6.1

JCF Detail: Kansas Juvenile Correctional Complex Males

Youth Entering KJCC	Jul-19	Aug-19	Sep-19	Oct-19	Nov-19	Dec-19	Jan-20	Feb-20	Mar-20	Apr-20	May-20	Jun-20	Total	Monthly Avg
New Commitments	13	17	10	14	13	11	12	11	7	0	0	9	117	9.8
Return due to Technical Violations of Conditional Release	0	1	0	0	0	0	0	0	0	0	0	0	1	0.1
Return due to new crime while on conditional release	0	0	0	0	0	0	0	0	1	0	0	0	1	0.1
Return from Discharge with New Adjudication	1	2	1	2	2	1	2	2	3	0	0	0	16	1.3
Transferring In from another JCF	0	0	0	0	0	0	0	0	0	0	0	0	0	0.0
Total Entries into JCF	14	20	11	16	15	12	14	13	11	0	0	0	126	10.5
Youth Exiting Facility	Jul-19	Aug-19	Sep-19	Oct-19	Nov-19	Dec-19	Jan-20	Feb-20	Mar-20	Apr-20	May-20	Jun-20	Total	Monthly Avg
Conditional Releases	12	13	13	2	5	11	7	11	4	12	9	5	104	8.7
Direct Discharges	1	1	2	3	10	5	6	4	6	0	5	4	47	3.9
Total Exits from Facility	13	14	15	5	15	16	13	15	10	12	14	9	151	12.6
Month End Population	Jul-19	Aug-19	Sep-19	Oct-19	Nov-19	Dec-19	Jan-20	Feb-20	Mar-20	Apr-20	May-20	Jun-20	Total	Monthly Avg
Total # Youth placed in JCF on last day of the month	156	158	154	165	165	162	163	160	163	149	136	135	1866	287.1

**JCF Month End Summary Management Information
For Youth Placed in JCF on Last Day of the Month in FY20**

Statewide Summary

Fiscal Year 2020 Month End

Length of Stay & Age	Jul	Aug	Sep	Oct	Nov	Dec	Jan	Feb	Mar	Apr	May	Jun
Average Months for all Youth	10.7	10.6	11.2	11.1	11.1	11.2	10.5	11.2	10.9	11.8	12.5	13.2
Median Months for all Youth	7.3	7.3	7.8	7.1	6.7	6.7	6.9	7.4	7.2	8.3	9.1	9.4
Average Age All Youth	17.7	17.6	17.7	17.7	17.6	17.7	17.6	17.6	17.7	17.7	17.8	17.8
Median Age All Youth	17.8	17.7	17.8	17.8	17.8	17.7	17.7	17.8	17.8	17.8	17.8	18.0

Female Summary

Fiscal Year 2020 Month End

Length of Stay & Age	Jul	Aug	Sep	Oct	Nov	Dec	Jan	Feb	Mar	Apr	May	Jun
Average Months in JCF	8.9	7.3	10.6	11.6	9.7	10.8	7.8	10.2	10.6	13.1	20.1	29.9
Median Months In JCF	4.1	4.4	5.1	6.1	6.1	7.1	2.4	3.7	4.5	3.6	14.2	29.9
Average Age	17.9	17.7	17.5	17.6	18.1	18.2	18.1	18.2	18.3	18.0	17.5	17.7
Median Age	18.1	18.1	17.9	18.0	18.3	18.3	18.2	18.3	18.3	17.9	17.4	17.7

Male Summary

Fiscal Year 2020 Month End

Length of Stay & Age	Jul	Aug	Sep	Oct	Nov	Dec	Jan	Feb	Mar	Apr	May	Jun
Average Months in JCF	10.8	10.9	11.2	11.0	11.1	11.2	10.6	11.3	10.9	11.7	12.4	13.0
Median Months In JCF	7.4	7.8	7.9	7.2	6.7	6.7	7.0	7.5	7.3	8.3	9.1	9.3
Average Age	17.7	17.6	17.7	17.7	17.6	17.6	17.6	17.6	17.6	17.7	17.8	17.8
Median Age	17.8	17.7	17.8	17.8	17.8	17.7	17.7	17.7	17.7	17.8	17.8	18.0

**Age of All JCF Youth
Current 2020 Month End Population**

