

## Juvenile Correctional Facility Population Activity

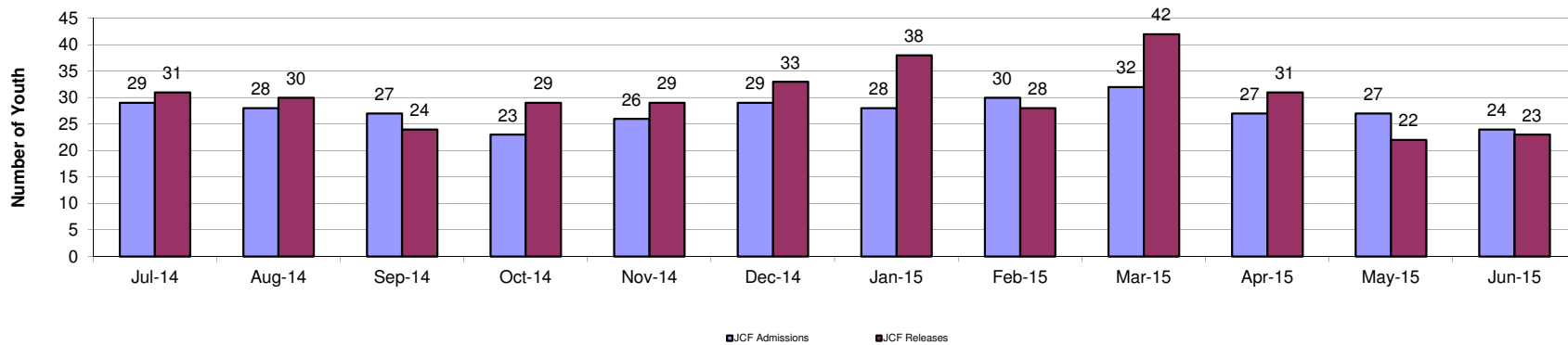
### Fiscal Year 2015

There were 4.3% more admissions than releases during the month of June. The statewide month end population for June 2015 (261) is 10.9% less than the month end population for June 2014 (293).

#### Statewide JCF Activity Summary

	Jul-14	Aug-14	Sep-14	Oct-14	Nov-14	Dec-14	Jan-15	Feb-15	Mar-15	Apr-15	May-15	Jun-15	Total	FY15 Avg
JCF Admissions	29	28	27	23	26	29	28	30	32	27	27	24	330	27.5
JCF Releases	31	30	24	29	29	33	38	28	42	31	22	23	360	30.0
<b>Month End Population</b>	<b>292</b>	<b>283</b>	<b>284</b>	<b>281</b>	<b>278</b>	<b>276</b>	<b>264</b>	<b>266</b>	<b>262</b>	<b>255</b>	<b>259</b>	<b>261</b>	<b>N/A</b>	<b>271.8</b>

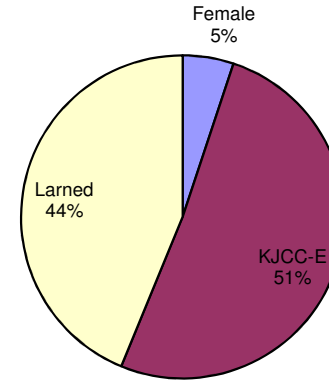
#### Statewide JCF Admissions and Releases FY15



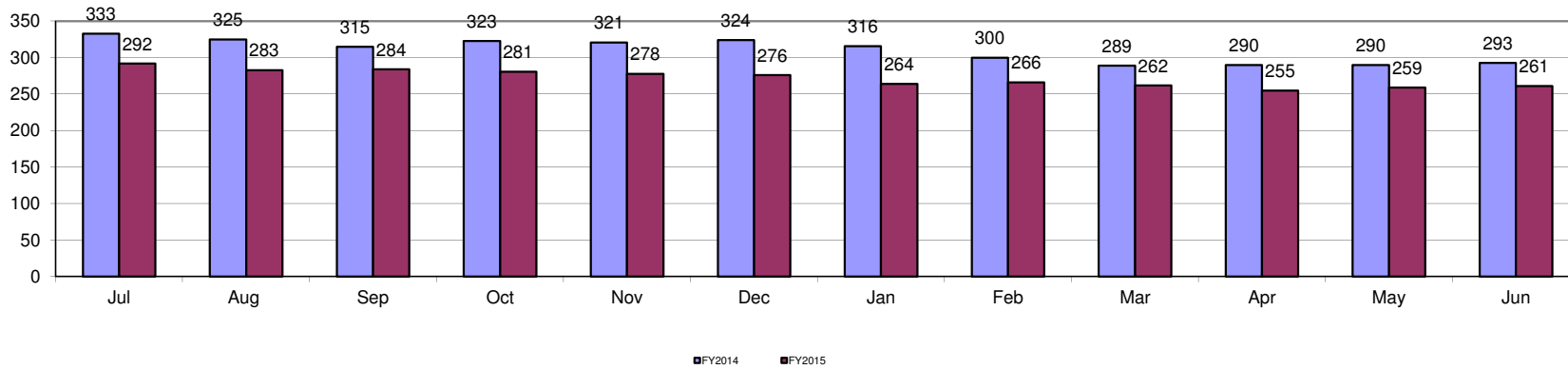
**Statewide JCF Month End Population**

The average month end population for FY15 (272) is 11.97% lower than the average month end population during FY14 (309).

**FY15 Average:  
Youth JCF Placement Distribution**



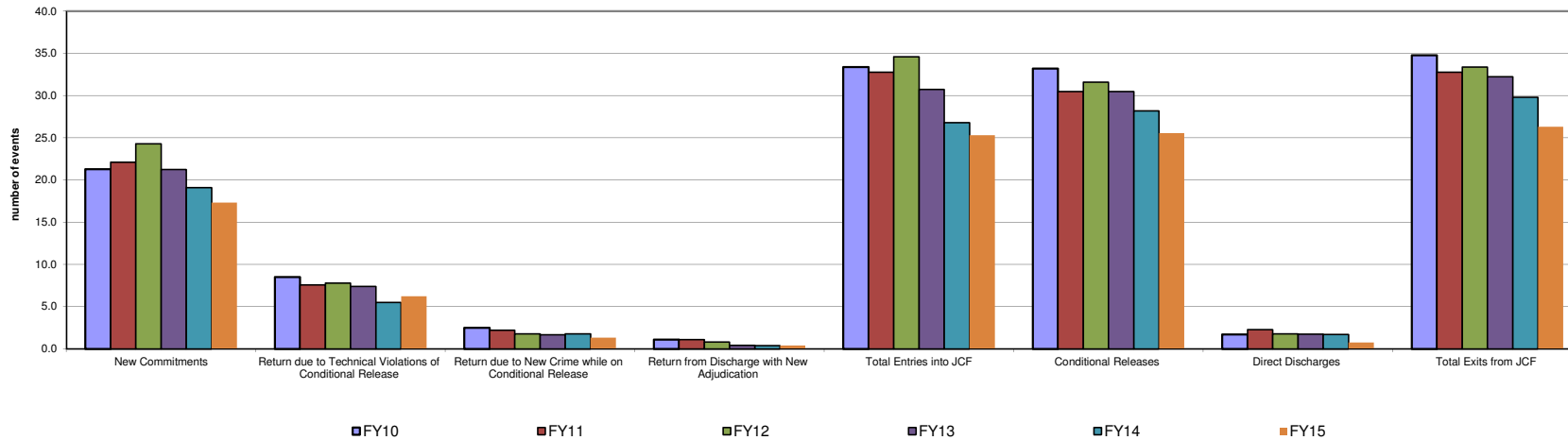
**Statewide Juvenile Correctional Facility Month End Population**



**Fiscal Year Flashback  
Census Events: Average Monthly Frequency**

	FY07	FY08	FY09	FY10	FY11	FY12	FY13	FY14	FY15
New Commitments	30.7	25.8	23.7	21.3	22.1	24.3	21.3	19.1	17.3
Return due to Technical Violations of Conditional Release	11.2	8.7	11.0	8.5	7.6	7.8	7.4	5.5	6.3
Return due to New Crime while on Conditional Release	2.5	1.8	1.8	2.5	2.2	1.8	1.7	1.8	1.3
Return from Discharge with New Adjudication	0.3	0.7	1.0	1.1	1.1	0.8	0.4	0.4	0.4
<b>Total Entries into JCF</b>	<b>44.6</b>	<b>37.0</b>	<b>37.5</b>	<b>33.4</b>	<b>32.8</b>	<b>34.6</b>	<b>30.8</b>	<b>26.8</b>	<b>25.3</b>
Conditional Releases	38.2	40.5	37.7	33.2	30.5	31.6	30.5	28.2	25.6
Direct Discharges	1.8	1.5	1.6	1.7	2.3	1.8	1.8	1.7	0.8
<b>Total Exits from JCF</b>	<b>40.0</b>	<b>42.0</b>	<b>39.3</b>	<b>34.8</b>	<b>32.8</b>	<b>33.4</b>	<b>32.3</b>	<b>29.8</b>	<b>26.3</b>

**Statewide Average JCF Census # Events Across Years**



**JCF Detail: Statewide**

<b>Youth Entering All JCF</b>	<b>Jul-14</b>	<b>Aug-14</b>	<b>Sep-14</b>	<b>Oct-14</b>	<b>Nov-14</b>	<b>Dec-14</b>	<b>Jan-15</b>	<b>Feb-15</b>	<b>Mar-15</b>	<b>Apr-15</b>	<b>May-15</b>	<b>Jun-15</b>	<b>Total</b>	<b>Monthly Avg</b>
New Commitments	22	21	22	16	19	18	7	15	14	22	17	15	208	17.3
Return due to Technical Violations of Conditional Release	3	6	5	5	4	9	8	8	7	4	9	7	75	6.3
Return due to New Crime while on Conditional Release	3	1	0	2	2	2	0	1	3	0	1	1	16	1.3
Return from Discharge with New Adjudication	1	0	0	0	1	0	0	0	1	1	0	1	5	0.4
<b><i>Total Entries into JCF</i></b>	<b>29</b>	<b>28</b>	<b>27</b>	<b>23</b>	<b>26</b>	<b>29</b>	<b>15</b>	<b>24</b>	<b>25</b>	<b>27</b>	<b>27</b>	<b>24</b>	<b>304</b>	<b>25.3</b>
<b>Youth Exiting Facility</b>	<b>Jul-14</b>	<b>Aug-14</b>	<b>Sep-14</b>	<b>Oct-14</b>	<b>Nov-14</b>	<b>Dec-14</b>	<b>Jan-15</b>	<b>Feb-15</b>	<b>Mar-15</b>	<b>Apr-15</b>	<b>May-15</b>	<b>Jun-15</b>	<b>Total</b>	<b>Monthly Avg</b>
Conditional Releases	30	29	22	28	27	32	22	22	20	31	21	23	307	25.6
Direct Discharges	0	1	2	1	2	1	0	0	1	0	1	0	9	0.8
<b><i>Total Exits from Facility</i></b>	<b>30</b>	<b>30</b>	<b>24</b>	<b>29</b>	<b>29</b>	<b>33</b>	<b>22</b>	<b>22</b>	<b>21</b>	<b>31</b>	<b>22</b>	<b>23</b>	<b>316</b>	<b>26.3</b>
<b>Month End Population</b>	<b>Jul-14</b>	<b>Aug-14</b>	<b>Sep-14</b>	<b>Oct-14</b>	<b>Nov-14</b>	<b>Dec-14</b>	<b>Jan-15</b>	<b>Feb-15</b>	<b>Mar-15</b>	<b>Apr-15</b>	<b>May-15</b>	<b>Jun-15</b>	<b>Total</b>	<b>Monthly Avg</b>
Total # Youth placed in JCF on last day of the month	295	285	281	282	281	276	269	269	265	255	260	261	3279	271.8

JCF Detail: Females

<b>Youth Entering Females</b>	<b>Jul-14</b>	<b>Aug-14</b>	<b>Sep-14</b>	<b>Oct-14</b>	<b>Nov-14</b>	<b>Dec-14</b>	<b>Jan-15</b>	<b>Feb-15</b>	<b>Mar-15</b>	<b>Apr-15</b>	<b>May-15</b>	<b>Jun-15</b>	<b>Total</b>	<b>Monthly Avg</b>
New Commitments	2	0	0	1	2	1	0	2	1	4	2	2	17	1.4
Return due to Technical Violations of Conditional Release	0	2	0	1	1	0	1	1	1	0	0	1	8	0.7
Return due to New Crime while on Conditional Release	0	1	0	0	0	0	0	0	0	0	0	0	1	0.1
Return from Discharge with New Adjudication	0	0	0	0	1	0	0	0	0	0	0	0	1	0.1
Transferring In from another JCF (N/A)	0	0	0	0	0	0	0	0	0	0	0	0	0	0.0
<b>Total Entries into JCF</b>	<b>2</b>	<b>3</b>	<b>0</b>	<b>2</b>	<b>4</b>	<b>1</b>	<b>1</b>	<b>3</b>	<b>2</b>	<b>4</b>	<b>2</b>	<b>3</b>	<b>27</b>	<b>2.3</b>
<b>Youth Exiting Facility</b>	<b>Jul-14</b>	<b>Aug-14</b>	<b>Sep-14</b>	<b>Oct-14</b>	<b>Nov-14</b>	<b>Dec-14</b>	<b>Jan-15</b>	<b>Feb-15</b>	<b>Mar-15</b>	<b>Apr-15</b>	<b>May-15</b>	<b>Jun-15</b>	<b>Total</b>	<b>Monthly Avg</b>
Transferred out to another JCF (N/A)	0	0	0	0	0	0	0	0	0	0	0	0	0	N/A
Conditional Releases	0	2	0	2	0	2	4	1	4	1	0	0	16	1.3
Direct Discharges	0	0	0	0	0	0	0	0	0	0	2	0	2	0.2
<b>Total Exits from Facility</b>	<b>0</b>	<b>2</b>	<b>0</b>	<b>2</b>	<b>0</b>	<b>2</b>	<b>4</b>	<b>1</b>	<b>4</b>	<b>1</b>	<b>2</b>	<b>0</b>	<b>18</b>	<b>1.5</b>
<b>Month End Population</b>	<b>Jul-14</b>	<b>Aug-14</b>	<b>Sep-14</b>	<b>Oct-14</b>	<b>Nov-14</b>	<b>Dec-14</b>	<b>Jan-15</b>	<b>Feb-15</b>	<b>Mar-15</b>	<b>Apr-15</b>	<b>May-15</b>	<b>Jun-15</b>	<b>Total</b>	<b>Monthly Avg</b>
Total # Youth placed in JCF on last day of the month	14	15	15	16	16	15	12	14	12	15	15	17	176	14.7

**JCF Detail: Kansas Juvenile Correctional Complex**

<b>Youth Entering KJCC</b>	<b>Jul-14</b>	<b>Aug-14</b>	<b>Sep-14</b>	<b>Oct-14</b>	<b>Nov-14</b>	<b>Dec-14</b>	<b>Jan-15</b>	<b>Feb-15</b>	<b>Mar-15</b>	<b>Apr-15</b>	<b>May-15</b>	<b>Jun-15</b>	<b>Total</b>	<b>Monthly Avg</b>
New Commitments	20	13	22	14	17	17	7	13	13	18	15	13	182	15.2
Return due to Technical Violations of Conditional Release	3	4	5	3	3	9	7	7	4	3	9	7	64	5.3
Return due to new crime while on conditional release	3	0	0	2	2	2	0	1	3	0	1	1	15	1.3
Return from Discharge with New Adjudication	1	0	0	0	0	0	0	0	1	1	0	1	4	0.3
Transferring In from another JCF	0	0	0	0	0	1	2	1	0	0	0	0	4	0.3
<b>Total Entries into JCF</b>	<b>27</b>	<b>17</b>	<b>27</b>	<b>19</b>	<b>22</b>	<b>29</b>	<b>16</b>	<b>22</b>	<b>21</b>	<b>22</b>	<b>25</b>	<b>22</b>	<b>269</b>	<b>22.4</b>
<b>Youth Exiting Facility</b>	<b>Jul-14</b>	<b>Aug-14</b>	<b>Sep-14</b>	<b>Oct-14</b>	<b>Nov-14</b>	<b>Dec-14</b>	<b>Jan-15</b>	<b>Feb-15</b>	<b>Mar-15</b>	<b>Apr-15</b>	<b>May-15</b>	<b>Jun-15</b>	<b>Total</b>	<b>Monthly Avg</b>
Transferred out to another JCF	14	8	13	14	6	11	11	5	9	13	11	8	123	10.3
Conditional Releases	24	17	10	19	18	14	14	13	16	20	10	15	190	15.8
Direct Discharges	0	1	0	1	0	1	0	0	1	0	1	0	5	0.4
<b>Total Exits from Facility</b>	<b>38</b>	<b>26</b>	<b>23</b>	<b>34</b>	<b>24</b>	<b>26</b>	<b>25</b>	<b>18</b>	<b>26</b>	<b>33</b>	<b>22</b>	<b>23</b>	<b>318</b>	<b>26.5</b>
<b>Month End Population</b>	<b>Jul-14</b>	<b>Aug-14</b>	<b>Sep-14</b>	<b>Oct-14</b>	<b>Nov-14</b>	<b>Dec-14</b>	<b>Jan-15</b>	<b>Feb-15</b>	<b>Mar-15</b>	<b>Apr-15</b>	<b>May-15</b>	<b>Jun-15</b>	<b>Total</b>	<b>Monthly Avg</b>
Total # Youth placed in JCF on last day of the month	155	146	149	137	137	142	133	137	136	124	128	127	1651	137.6

**JCF Detail: Larned Juvenile Correctional Facility**

<b>Youth Entering Larned Facility</b>	<b>Jul-14</b>	<b>Aug-14</b>	<b>Sep-14</b>	<b>Oct-14</b>	<b>Nov-14</b>	<b>Dec-14</b>	<b>Jan-15</b>	<b>Feb-15</b>	<b>Mar-15</b>	<b>Apr-15</b>	<b>May-15</b>	<b>Jun-15</b>	<b>Total</b>	<b>Monthly Avg</b>
New Commitments	0	0	0	1	0	0	0	0	0	0	0	0	1	0.1
Return due to Technical Violations of Conditional Release	0	0	0	1	0	0	0	0	0	0	0	0	1	0.1
Return due to New Crime while on Conditional Release	0	0	0	0	0	0	0	0	0	0	0	0	0	0.0
Return from Discharge with New Adjudication	0	0	0	0	0	0	0	0	0	0	0	0	0	0.0
Transferring In from another JCF	14	8	13	14	6	11	11	5	9	13	11	8	123	10.3
<b>Total Entries into JCF</b>	<b>14</b>	<b>8</b>	<b>13</b>	<b>16</b>	<b>6</b>	<b>11</b>	<b>11</b>	<b>5</b>	<b>9</b>	<b>13</b>	<b>11</b>	<b>8</b>	<b>125</b>	<b>10.4</b>
<b>Youth Exiting Facility</b>	<b>Jul-14</b>	<b>Aug-14</b>	<b>Sep-14</b>	<b>Oct-14</b>	<b>Nov-14</b>	<b>Dec-14</b>	<b>Jan-15</b>	<b>Feb-15</b>	<b>Mar-15</b>	<b>Apr-15</b>	<b>May-15</b>	<b>Jun-15</b>	<b>Total</b>	<b>Monthly Avg</b>
Transferred out to another JCF	0	0	0	1	0	1	2	1	0	0	0	0	5	0.4
Conditional Releases	6	10	12	7	9	16	7	8	12	10	10	8	115	9.6
Direct Discharges	0	0	2	0	2	1	0	0	0	0	0	0	5	0.4
<b>Total Exits from Facility</b>	<b>6</b>	<b>10</b>	<b>14</b>	<b>8</b>	<b>11</b>	<b>18</b>	<b>9</b>	<b>9</b>	<b>12</b>	<b>10</b>	<b>10</b>	<b>8</b>	<b>125</b>	<b>10.4</b>
<b>Month End Population</b>	<b>Jul-14</b>	<b>Aug-14</b>	<b>Sep-14</b>	<b>Oct-14</b>	<b>Nov-14</b>	<b>Dec-14</b>	<b>Jan-15</b>	<b>Feb-15</b>	<b>Mar-15</b>	<b>Apr-15</b>	<b>May-15</b>	<b>Jun-15</b>	<b>Total</b>	<b>Monthly Avg</b>
Total # Youth placed in JCF on last day of the month	123	122	120	128	125	119	119	115	114	116	116	117	1434	119.5

**JCF Month End Summary Management Information  
For Youth Placed in JCF on Last Day of the Month in FY15**

**Statewide Summary**

Fiscal Year 2015 Month End

<b>Length of Stay &amp; Age</b>	<b>Jul</b>	<b>Aug</b>	<b>Sep</b>	<b>Oct</b>	<b>Nov</b>	<b>Dec</b>	<b>Jan</b>	<b>Feb</b>	<b>Mar</b>	<b>Apr</b>	<b>May</b>	<b>Jun</b>
Average Months for all Youth	9.0	9.0	8.7	10.1	9.8	9.4	9.5	9.5	9.7	9.3	9.4	9.5
Median Months for all Youth	6.5	6.2	6.1	6.2	6.3	6.4	6.5	6.9	6.3	6.6	6.7	6.6
Average Age All Youth	17.6	17.5	17.5	17.8	17.8	17.7	17.8	17.8	17.8	17.7	17.8	17.8
Median Age All Youth	17.6	17.5	17.5	17.9	17.7	17.7	17.8	17.8	17.8	17.7	17.7	17.8

**Female Summary**

Fiscal Year 2015 Month End

<b>Length of Stay &amp; Age</b>	<b>Jul</b>	<b>Aug</b>	<b>Sep</b>	<b>Oct</b>	<b>Nov</b>	<b>Dec</b>	<b>Jan</b>	<b>Feb</b>	<b>Mar</b>	<b>Apr</b>	<b>May</b>	<b>Jun</b>
Average Months in JCF	6.6	6.6	5.5	6.1	5.5	5.5	7.1	6.8	5.1	4.9	5.5	4.6
Median Months In JCF	3.1	3.2	3.8	4.2	3.9	3.2	3.4	3.7	4.5	2.9	3.9	3.0
Average Age	17.1	16.9	16.7	16.8	16.9	16.8	16.7	16.8	16.7	16.8	17.1	17.3
Median Age	17.0	16.9	16.6	16.7	17.0	16.9	16.9	16.9	17.2	17.1	17.2	17.3

**KJCC Summary**

Fiscal Year 2015 Month End

<b>Length of Stay &amp; Age</b>	<b>Jul</b>	<b>Aug</b>	<b>Sep</b>	<b>Oct</b>	<b>Nov</b>	<b>Dec</b>	<b>Jan</b>	<b>Feb</b>	<b>Mar</b>	<b>Apr</b>	<b>May</b>	<b>Jun</b>
Average Months in JCF	9.5	9.6	10.0	10.5	9.5	9.0	9.6	9.5	9.6	9.1	9.2	9.3
Median Months In JCF	6.4	6.2	6.5	6.7	6.2	6.2	6.5	5.5	5.9	5.8	6.1	5.8
Average Age	17.9	17.8	17.9	18.0	17.9	17.8	17.9	18.0	17.9	17.8	17.9	17.9
Median Age	17.9	17.8	17.9	18.0	17.8	17.9	18.0	18.0	18.0	17.8	17.8	17.8

**LJCF Summary**

Fiscal Year 2015 Month End

<b>Length of Stay &amp; Age</b>	<b>Jul</b>	<b>Aug</b>	<b>Sep</b>	<b>Oct</b>	<b>Nov</b>	<b>Dec</b>	<b>Jan</b>	<b>Feb</b>	<b>Mar</b>	<b>Apr</b>	<b>May</b>	<b>Jun</b>
Average Months in JCF	10.9	10.9	10.7	10.1	10.7	5.5	9.7	9.8	10.2	10.0	10.2	10.3
Median Months In JCF	10.1	9.1	8.1	7.8	6.5	3.2	6.5	7.1	7.9	7.4	7.9	8.4
Average Age	17.7	17.8	17.8	17.7	17.7	16.8	17.7	17.6	17.7	17.6	17.8	17.8
Median Age	17.8	17.9	17.9	17.8	17.8	16.9	17.7	17.6	17.8	17.7	17.7	17.8



### Age of All JCF Youth June 2015 Month End Population

