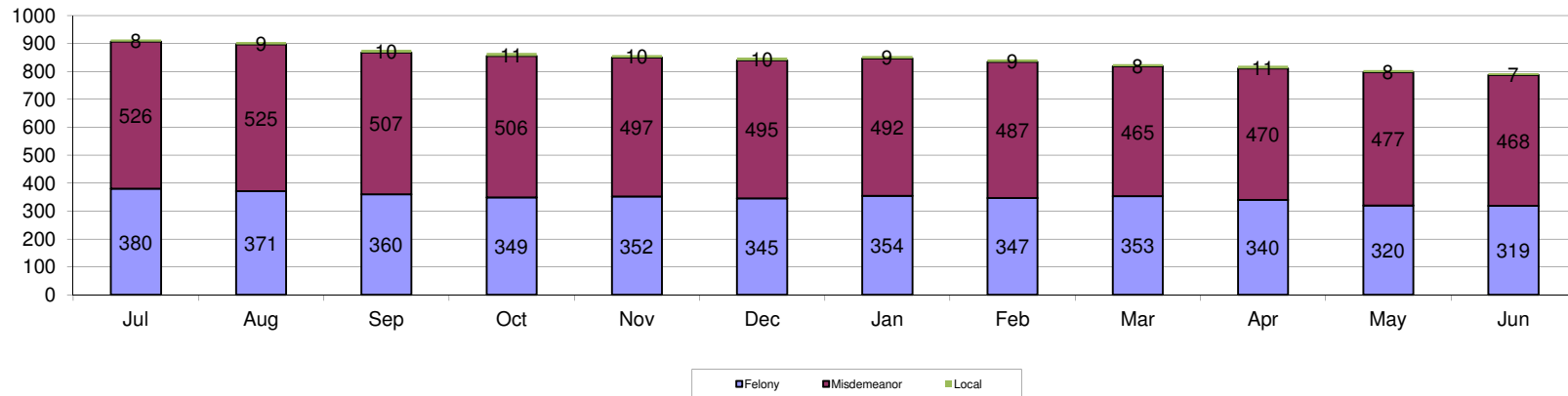


Juvenile Intensive Supervision Probation Youth on Last Day of Month FY 2015

	Jul	Aug	Sep	Oct	Nov	Dec	Jan	Feb	Mar	Apr	May	Jun	Avg of Total
Felony	380	371	360	349	352	345	354	347	353	340	320	319	349
Misdemeanor	526	525	507	506	497	495	492	487	465	470	477	468	493
Local	8	9	10	11	10	10	9	9	8	11	8	7	9
Total	914	905	877	866	859	850	855	843	826	821	805	794	856

Juvenile Intensive Supervision Probation (JISP) is a structured community-based supervision program that provides an additional sentencing option to Kansas' courts. Youth on JISP have either previously failed traditional court service probation or have committed a serious offense, but do not require an out-of-home placement or commitment to a juvenile correctional facility. This data represents youth on JISP on the last day of the month with the most recent offense type during FY 2015.

JISP Population and Most Recent Offense Type FY 2015



Juvenile Intensive Supervision Probation Youth by Judicial District on Last Day of the Month FY 2015

		1	2	3	4	5	6	7	8	9	10	11	12	13	14	16	15/17/23	18	19	20	21	22	24	25	26	27	28	29	30	31	Total	Average of Total
Jul	Felony	11	6	36	7	4	13	6	22	4	24	5	2	15	3	8	10	87	4	14	6	9	1	7	14	5	16	24	6	11	380	13
	Misdemeanor	21	17	9	4	4	13	20	17	13	44	14	0	24	7	16	32	68	30	23	7	11	2	16	29	18	43	7	10	7	526	18
	Local	0	0	0	0	0	0	0	0	0	0	1	0	0	0	1	0	1	3	0	0	0	0	0	0	2	0	0	0	0	8	0
	Total	32	23	45	11	8	26	26	39	17	68	20	2	39	10	25	42	156	37	37	13	20	3	23	43	25	59	31	16	18	914	32
Aug	Felony	11	6	34	7	4	13	7	21	4	21	6	2	14	4	8	10	79	4	14	7	8	1	6	17	6	17	23	7	10	371	13
	Misdemeanor	20	15	10	4	5	15	17	16	12	44	11	0	21	7	16	33	70	29	22	8	11	2	15	30	19	48	7	11	7	525	18
	Local	0	0	0	0	0	0	0	0	0	0	1	0	0	0	0	0	2	3	1	0	0	0	0	0	2	0	0	0	0	9	0
	Total	31	21	44	11	9	28	24	37	16	65	18	2	35	11	24	43	151	36	37	15	19	3	21	47	27	65	30	18	17	905	31
Sep	Felony	8	5	33	7	4	13	7	18	4	22	6	2	13	5	7	10	77	4	14	7	8	1	7	15	7	16	25	6	9	360	12
	Misdemeanor	21	17	9	4	4	16	18	14	13	41	12	0	19	6	13	35	65	28	20	7	13	2	13	31	16	48	5	10	7	507	17
	Local	0	0	0	0	0	0	0	0	0	0	1	0	0	0	0	0	3	3	1	0	0	0	0	0	2	0	0	0	0	10	0
	Total	29	22	42	11	8	29	32	17	63	19	2	32	11	20	45	145	35	35	14	21	3	20	46	25	64	30	16	16	877	30	
Oct	Felony	6	5	30	6	4	14	8	18	4	21	7	2	15	5	7	9	75	3	13	7	8	1	6	15	7	14	27	4	8	349	12
	Misdemeanor	22	18	11	3	4	16	15	13	14	42	11	2	18	7	13	35	62	28	20	7	13	2	15	32	14	48	6	8	7	506	17
	Local	0	0	0	0	0	0	0	0	0	0	0	0	0	0	0	0	3	4	2	0	0	0	0	0	2	0	0	0	0	11	0
	Total	28	23	41	9	8	30	23	31	18	63	18	4	33	12	20	44	140	35	35	14	21	3	21	47	23	62	33	12	15	866	30
Nov	Felony	5	4	32	7	4	15	8	18	5	22	7	2	16	4	8	9	77	2	14	6	8	1	6	16	6	13	25	5	7	352	12
	Misdemeanor	20	15	11	4	4	16	13	14	14	49	10	2	18	8	14	37	54	26	18	5	14	2	12	33	15	49	6	8	6	497	17
	Local	0	0	0	0	0	0	0	0	0	0	0	0	0	0	0	0	3	4	2	0	0	0	0	0	1	0	0	0	0	10	0
	Total	26	21	43	12	8	31	23	30	17	73	20	4	34	11	22	45	135	32	36	11	20	3	18	48	22	62	31	13	13	864	30
Dec	Felony	6	5	29	8	4	16	8	19	5	24	7	1	16	4	7	9	75	1	15	7	9	0	9	13	5	11	20	5	7	345	12
	Misdemeanor	16	16	7	4	4	16	14	14	13	48	10	2	17	8	15	38	59	26	18	4	12	2	14	29	14	51	8	10	6	495	17
	Local	0	0	0	0	0	0	0	0	0	0	0	0	0	0	0	0	3	4	1	0	0	0	0	0	2	0	0	0	0	10	0
	Total	22	21	36	12	8	32	22	33	18	72	17	3	33	12	22	47	137	31	34	11	21	2	23	42	21	62	28	15	13	850	29
Jan	Felony	7	5	29	8	5	16	9	18	5	25	8	1	14	4	6	9	81	1	14	8	9	0	8	15	6	11	20	6	6	354	12
	Misdemeanor	15	14	7	3	6	15	11	14	12	51	11	2	17	7	16	46	66	18	17	3	10	2	15	28	12	52	7	9	6	492	17
	Local	0	0	0	0	0	0	0	0	0	0	0	0	0	0	0	0	3	4	1	0	0	0	0	1	0	0	0	0	0	9	0
	Total	22	19	36	11	11	31	20	32	17	76	19	3	31	11	22	55	150	23	32	11	19	2	23	43	19	63	27	15	12	855	29
Feb	Felony	7	6	29	10	4	15	8	20	4	23	7	0	13	4	6	9	80	2	13	7	8	0	7	17	4	10	22	6	6	347	12
	Misdemeanor	12	14	5	3	12	15	9	14	12	46	10	2	16	10	17	44	71	18	19	3	9	2	14	29	14	46	7	9	5	487	17
	Local	0	0	0	0	0	0	0	0	0	0	0	0	0	0	0	0	3	4	1	0	0	0	0	0	1	0	0	0	0	9	0
	Total	19	20	34	13	16	30	17	34	16	69	17	2	29	14	23	53	154	24	33	10	17	2	21	46	19	56	29	15	11	843	29
Mar	Felony	9	6	29	12	4	15	7	18	3	20	8	0	13	4	5	9	84	2	13	10	9	0	9	16	4	9	24	6	5	353	12
	Misdemeanor	11	13	6	3	15	15	9	14	11	46	10	1	14	9	19	42	63	15	20	2	11	2	12	21	17	43	7	9	5	465	16
	Local	0	0	0	0	0	0	0	0	0	0	0	0	0	0	0	0	3	3	1	0	0	0	0	0	1	0	0	0	0	8	0
	Total	20	19	35	15	19	30	16	32	14	66	18	1	27	13	24	51	150	20	34	12	20	2	21	37	22	52	31	15	10	826	28
Apr	Felony	8	5	29	13	3	15	6	17	5	17	7	0	12	4	5	8	81	2	13	10	11	0	8	16	5	8	21	6	5	340	12
	Misdemeanor	8	13	7	2	13	12	7	11	9	53	11	1	17	9	22	44	70	13	20	2	9	0	14	22	15	43	7	12	4	470	16
	Local	0	0	0	0	0	0	0	0	0	0	0	0	0	0	0	0	6	3	1	0	0	0	0	0	1	0	0	0	0	11	0
	Total	16	18	36	15	16	27	13	28	14	70	18	1	29	13	27	52	157	18	34	12	20	0	22	38	21	51	28	18	9	821	28
May	Felony	8	4	28	12	4	13	5	15	6	14	9	0	10	4	6	9	75	2	14	8	8	0	9	14	4	7	21	5	6	320	11
	Misdemeanor	9	14	10	3	12	11	7	9	10	54	13	2	15	11	21	47	69	16	22	2	9	0	15	20	12	43	6	12	3	477	16
	Local	0	0	0	0	0	0	0	0	0	0	0	0	0	0	0	0	5	2	0	0	0	0	0	0	1	0	0	0	0	8	0
	Total	17	18	38	15	16	24	12	24	16	68	22	2	25	15	27	56	149	20	36	10	17	0	24	34	17	50	27	17	9	805	28
Jun	Felony	8	3	30	14	3	12	5	15	7	13	9	1	11	4	4	8	74	2	12	10	7	0	11	13	5	9	19	5	5	319	11
	Misdemeanor	11	12	11	4	12	9	7	9	10	57	12	2	14	10	17	46	68	12	21	2	9	0	14	22	11	43	7	15	1	468	16
	Local	0	0	0	0	0	0	0	0	0	0	0	0	0	0	0	0	4	1	0	0	0	0	0	0	2	0	0	0	0	7	0
	Total	19	15	41	18	15	21	12	24	17	70	21	3	25	14	21	54	146	15	33	12	16	0	25	35							