

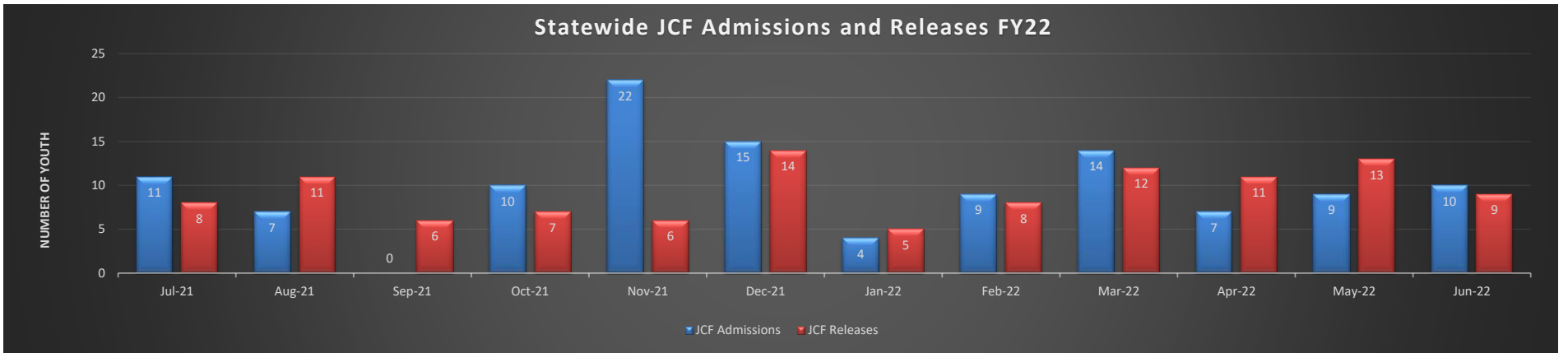
Juvenile Correctional Facility Population Activity

Fiscal Year 2022

Releases in FY 2022 are Less than Admissions by 6.8%

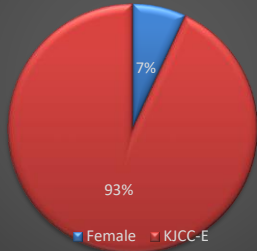
Statewide JCF Activity Summary

	Jul-21	Aug-21	Sep-21	Oct-21	Nov-21	Dec-21	Jan-22	Feb-22	Mar-22	Apr-22	May-22	Jun-22	Total	FY22 Avg	FY21 Avg
JCF Admissions	11	7	0	10	22	15	4	9	14	7	9	10	118	9.8	10.7
JCF Releases	8	11	6	7	6	14	5	8	12	11	13	9	110	9.2	10.9
Month End Population	139	135	129	132	148	149	148	149	151	147	143	144	1714	142.8	135.3

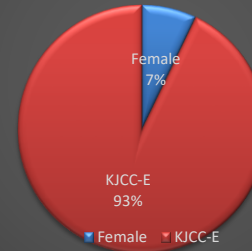


Statewide JCF Month End Population

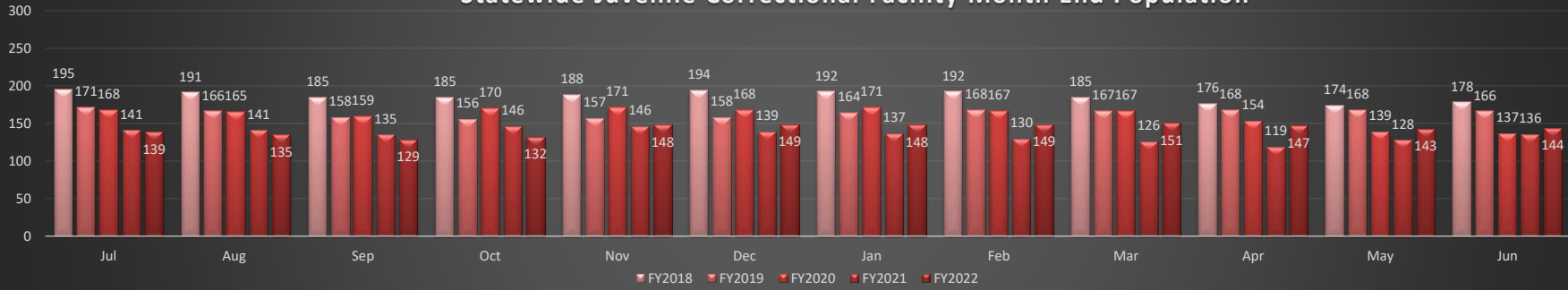
Current Month FY22 Average:
Youth JCF Placement Distribution



FY22 Average:
Youth JCF Placement Distribution

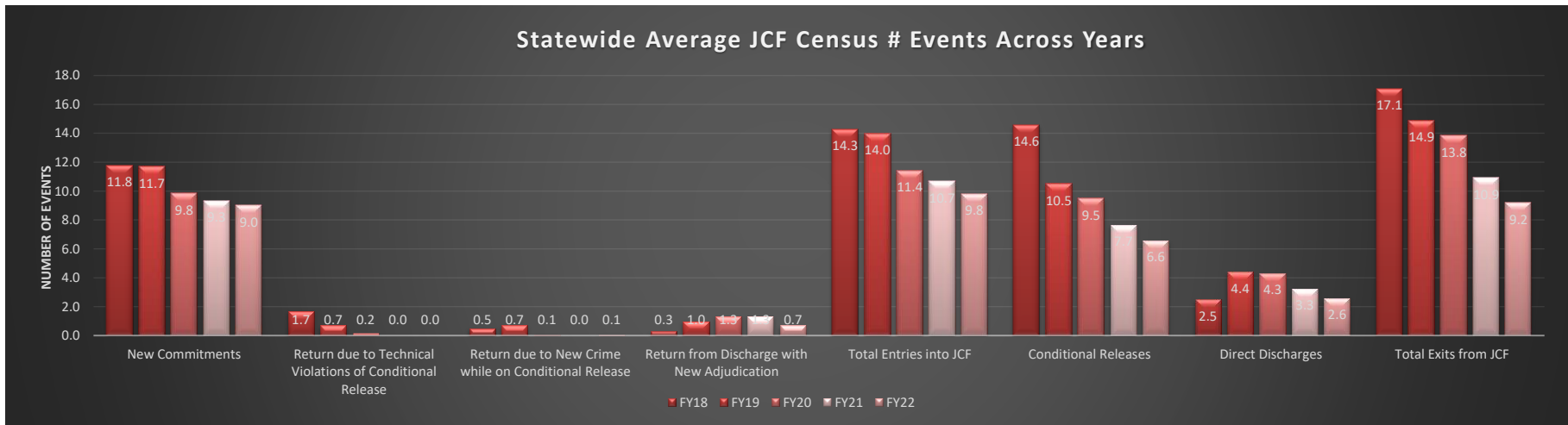


Statewide Juvenile Correctional Facility Month End Population



Fiscal Year Flashback
Census Events: Average Monthly Frequency

	FY10	FY11	FY12	FY13	FY14	FY15	FY16	FY17	FY18	FY19	FY20	FY21	FY22
New Commitments	21.3	22.1	24.3	21.3	19.1	17.3	14.6	14.3	11.8	11.7	9.8	9.3	9.0
Return due to Technical Violations of Conditional Release	8.5	7.6	7.8	7.4	5.5	6.3	3.7	3.1	1.7	0.7	0.2	0.0	0.0
Return due to New Crime while on Conditional Release	2.5	2.2	1.8	1.7	1.8	1.3	1.3	1.9	0.5	0.7	0.1	0.0	0.1
Return from Discharge with New Adjudication	1.1	1.1	0.8	0.4	0.4	0.4	1.2	0.5	0.3	1.0	1.3	1.3	0.7
Total Entries into JCF	33.4	32.8	34.6	30.8	26.8	25.3	20.8	19.8	14.3	14.0	11.4	10.7	9.8
Conditional Releases	33.2	30.5	31.6	30.5	28.2	25.6	21.2	18.8	14.6	10.5	9.5	7.7	6.6
Direct Discharges	1.7	2.3	1.8	1.8	1.7	0.8	1.5	1.5	2.5	4.4	4.3	3.3	2.6
Total Exits from JCF	34.8	32.8	33.4	32.3	29.8	26.3	22.7	20.3	17.1	14.9	13.8	10.9	9.2



JCF Detail: Statewide

Youth Entering All JCF	Jul-21	Aug-21	Sep-21	Oct-21	Nov-21	Dec-21	Jan-22	Feb-22	Mar-22	Apr-22	May-22	Jun-22	Total	Monthly Avg
New Commitments	11	6	0	9	21	12	4	8	8	6	7	10	102	8.5
Return due to Technical Violations of Conditional Release	0	0	0	0	0	0	0	0	0	1	0	0	1	0.1
Return due to New Crime while on Conditional Release	0	0	0	0	0	1	0	0	0	0	0	0	1	0.1
Return from Discharge with New Adjudication	0	1	0	1	1	2	0	1	6	0	2	0	14	1.2
Total Entries into JCF	11	7	0	10	22	15	4	9	14	7	9	10	118	9.8
Youth Exiting Facility	Jul-21	Aug-21	Sep-21	Oct-21	Nov-21	Dec-21	Jan-22	Feb-22	Mar-22	Apr-22	May-22	Jun-22	Total	Monthly Avg
Conditional Releases	6	9	5	6	5	11	4	7	10	8	8	7	86	7.2
Direct Discharges	2	2	1	1	1	3	1	1	2	3	5	2	24	2.0
Total Exits from Facility	8	11	6	7	6	14	5	8	12	11	13	9	110	9.2
Month End Population	Jul-21	Aug-21	Sep-21	Oct-21	Nov-21	Dec-21	Jan-22	Feb-22	Mar-22	Apr-22	May-22	Jun-22	Total	Monthly Avg
Total # Youth placed in JCF on last day of the month	139	135	129	132	148	149	148	149	151	147	143	144	1714	142.8

JCF Detail: Females

Youth Entering Females	Jul-21	Aug-21	Sep-21	Oct-21	Nov-21	Dec-21	Jan-22	Feb-22	Mar-22	Apr-22	May-22	Jun-22	Total	Monthly Avg
New Commitments	1	1	0	2	1	1	0	0	2	1	1	0	10	0.8
Return due to Technical Violations of Conditional Release	0	0	0	0	0	0	0	0	0	1	0	0	1	0.1
Return due to New Crime while on Conditional Release	0	0	0	0	0	0	0	0	0	0	0	0	0	0.0
Return from Discharge with New Adjudication	0	0	0	0	0	0	0	0	0	0	0	0	0	0.0
Total Entries into JCF	1	1	0	2	1	1	0	0	2	2	1	0	11	0.9
Youth Exiting Facility	Jul-21	Aug-21	Sep-21	Oct-21	Nov-21	Dec-21	Jan-22	Feb-22	Mar-22	Apr-22	May-22	Jun-22	Total	Monthly Avg
Conditional Releases	0	0	0	0	0	1	0	1	0	1	1	1	5	0.4
Direct Discharges	0	0	0	0	0	0	0	0	0	1	0	1	2	0.2
Total Exits from Facility	0	0	0	0	0	1	0	1	0	2	1	2	7	0.6
Month End Population	Jul-21	Aug-21	Sep-21	Oct-21	Nov-21	Dec-21	Jan-22	Feb-22	Mar-22	Apr-22	May-22	Jun-22	Total	Monthly Avg
Total # Youth placed in JCF on last day of the month	7	8	8	10	11	11	11	10	12	12	12	10	122	10.2

JCF Detail: Kansas Juvenile Correctional Complex Males

Youth Entering KJCC	Jul-21	Aug-21	Sep-21	Oct-21	Nov-21	Dec-21	Jan-22	Feb-22	Mar-22	Apr-22	May-22	Jun-22	Total	Monthly Avg
New Commitments	10	5	0	7	20	11	4	8	6	5	6	10	92	7.7
Return due to Technical Violations of Conditional Release	0	0	0	0	0	0	0	0	0	0	0	0	0	0.0
Return due to new crime while on conditional release	0	0	0	0	0	1	0	0	0	0	0	0	1	0.1
Return from Discharge with New Adjudication	0	1	0	1	1	2	0	1	6	0	2	0	14	1.2
Total Entries into JCF	10	6	0	8	21	14	4	9	12	5	8	10	107	9.8
Youth Exiting Facility	Jul-21	Aug-21	Sep-21	Oct-21	Nov-21	Dec-21	Jan-22	Feb-22	Mar-22	Apr-22	May-22	Jun-22	Total	Monthly Avg
Conditional Releases	6	9	5	6	5	10	4	6	10	7	7	6	81	6.8
Direct Discharges	2	2	1	1	1	3	1	1	2	2	5	1	22	1.8
Total Exits from Facility	8	11	6	7	6	13	5	7	12	9	12	7	103	8.6
Month End Population	Jul-21	Aug-21	Sep-21	Oct-21	Nov-21	Dec-21	Jan-22	Feb-22	Mar-22	Apr-22	May-22	Jun-22	Total	Monthly Avg
Total # Youth placed in JCF on last day of the month	132	127	121	122	137	138	137	139	139	135	131	134	1592	132.7

JCF Month End Summary Management Information
For Youth Placed in JCF on Last Day of the Month in FY22

Statewide Summary												
Fiscal Year 2022 Month End												
Age	Jul	Aug	Sep	Oct	Nov	Dec	Jan	Feb	Mar	Apr	May	Jun
Average Age All Youth	17.5	17.5	17.6	17.6	17.5	17.5	17.6	17.6	17.6	17.6	17.6	17.7
Median Age All Youth	17.0	17.0	17.0	17.0	17.0	17.0	18.0	18.0	18.0	18.0	18.0	18.0
Average Length of Stay (Months)	12.2	12.6	13.2	12.7	11.4	11.1	11.8	12.1	11.8	12.5	12.9	13.1
Median Length of Stay (Months)	7.7	7.8	8.7	7.9	7.1	7.2	8.1	8.7	8.8	9.8	10.1	8.7
Female Summary												
Age	Jul	Aug	Sep	Oct	Nov	Dec	Jan	Feb	Mar	Apr	May	Jun
Average Age	17.0	17.1	17.1	16.9	17.2	17.4	17.4	17.6	17.3	17.3	16.9	16.9
Median Age	17.0	17.0	17.0	17.0	17.0	17.0	17.0	18.0	18.0	18.0	18.0	18.0
Average Length of Stay (Months)	9.8	9.5	10.5	9.3	9.5	9.9	10.9	12.3	11.2	11.4	11.9	13.6
Median Length of Stay (Months)	2.1	2.8	3.8	4.5	5.5	5.8	6.8	8.1	7.2	6.5	7.5	8.5
Male Summary												
Fiscal Year 2022 Month End												
Age	Jul	Aug	Sep	Oct	Nov	Dec	Jan	Feb	Mar	Apr	May	Jun
Average Age	17.5	17.5	17.6	17.6	17.5	17.5	17.6	17.6	17.6	17.7	17.7	17.7
Median Age	17.5	17.0	17.0	18.0	17.0	17.0	18.0	18.0	18.0	18.0	18.0	18.0
Average Length of Stay (Months)	12.3	12.8	13.4	13.0	11.6	11.2	11.8	12.1	11.8	12.7	13.0	13.0
Median Length of Stay (Months)	8.0	8.7	9.7	8.6	7.6	7.8	8.4	8.9	9.0	9.8	10.1	9.4

Age of All JCF Youth Current 2022 Month End Population

