

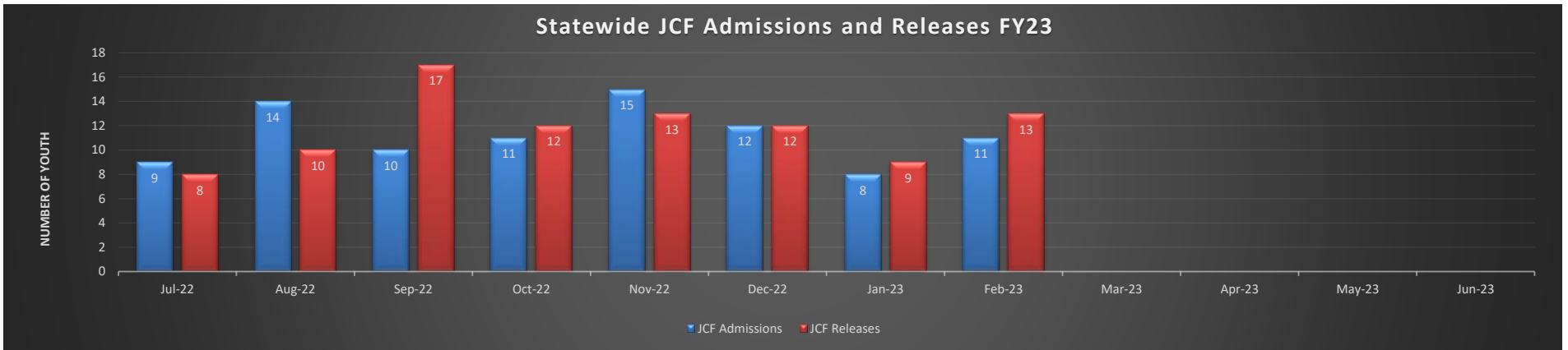
Juvenile Correctional Facility Population Activity

Fiscal Year 2023

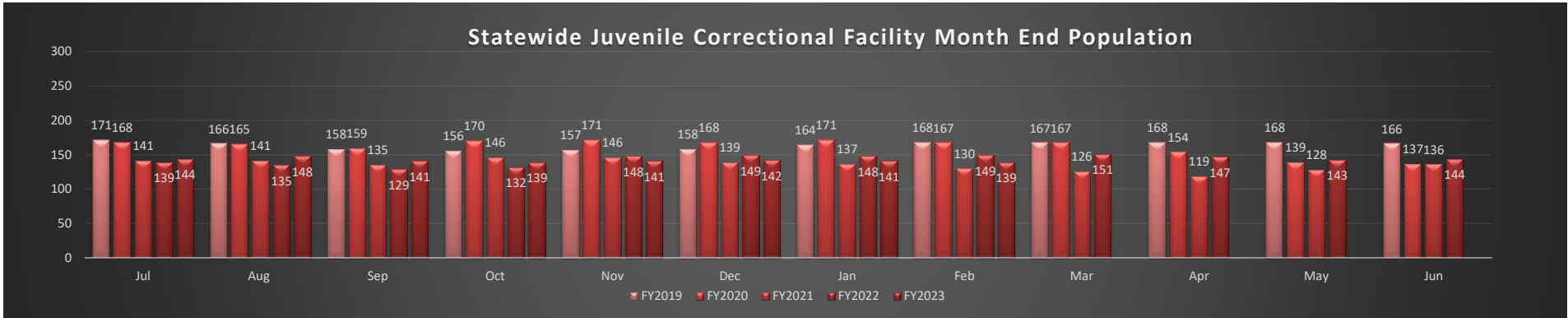
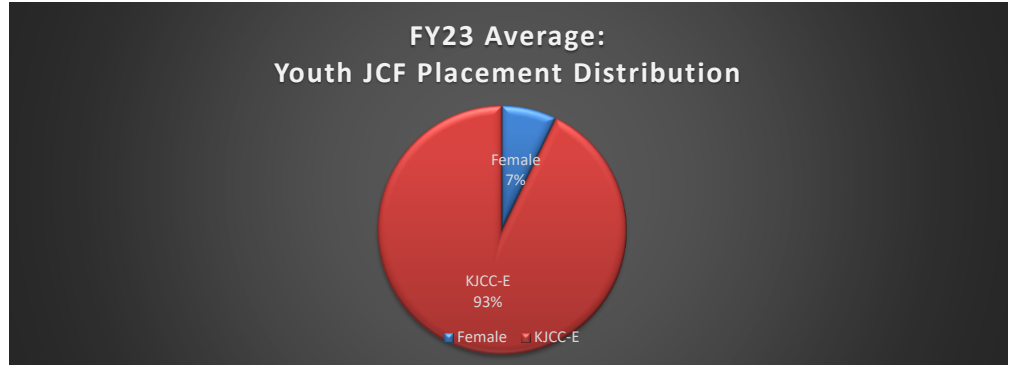
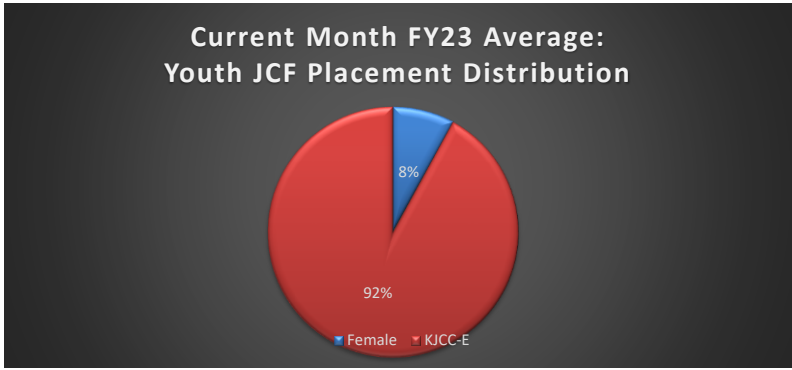
Releases in FY 2023 are More than Admissions by 4.4%

Statewide JCF Activity Summary

	Jul-22	Aug-22	Sep-22	Oct-22	Nov-22	Dec-22	Jan-23	Feb-23	Mar-23	Apr-23	May-23	Jun-23	Total	FY23 Avg	FY22 Avg
JCF Admissions	9	14	10	11	15	12	8	11					90	11.3	9.8
JCF Releases	8	10	17	12	13	12	9	13					94	11.8	9.2
Month End Population	144	148	141	139	141	142	141	139					1135	141.9	142.8

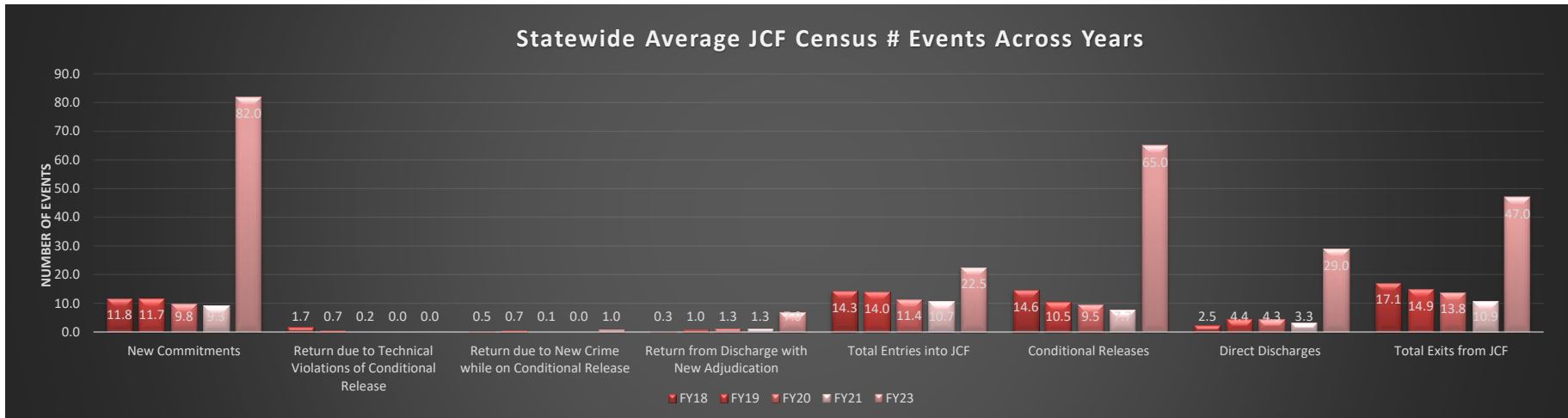


Statewide JCF Month End Population



Fiscal Year Flashback
Census Events: Average Monthly Frequency

	FY10	FY11	FY12	FY13	FY14	FY15	FY16	FY17	FY18	FY19	FY20	FY21	FY22	FY23
New Commitments	21.3	22.1	24.3	21.3	19.1	17.3	14.6	14.3	11.8	11.7	9.8	9.3	9.0	82.0
Return due to Technical Violations of Conditional Release	8.5	7.6	7.8	7.4	5.5	6.3	3.7	3.1	1.7	0.7	0.2	0.0	0.0	0.0
Return due to New Crime while on Conditional Release	2.5	2.2	1.8	1.7	1.8	1.3	1.3	1.9	0.5	0.7	0.1	0.0	0.1	1.0
Return from Discharge with New Adjudication	1.1	1.1	0.8	0.4	0.4	0.4	1.2	0.5	0.3	1.0	1.3	1.3	0.7	7.0
Total Entries into JCF	33.4	32.8	34.6	30.8	26.8	25.3	20.8	19.8	14.3	14.0	11.4	10.7	9.8	22.5
Conditional Releases	33.2	30.5	31.6	30.5	28.2	25.6	21.2	18.8	14.6	10.5	9.5	7.7	6.6	65.0
Direct Discharges	1.7	2.3	1.8	1.8	1.7	0.8	1.5	1.5	2.5	4.4	4.3	3.3	2.6	29.0
Total Exits from JCF	34.8	32.8	33.4	32.3	29.8	26.3	22.7	20.3	17.1	14.9	13.8	10.9	9.2	47.0



JCF Detail: Statewide

Youth Entering All JCF	Jul-22	Aug-22	Sep-22	Oct-22	Nov-22	Dec-22	Jan-23	Feb-23	Mar-23	Apr-23	May-23	Jun-23	Total	Monthly Avg
New Commitments	8	14	9	9	14	12	7	9						10.3
Return due to Technical Violations of Conditional Release	0	0	0	0	0	0	0	0						0.0
Return due to New Crime while on Conditional Release	0	0	0	1	0	0	0	0						0.1
Return from Discharge with New Adjudication	1	0	1	1	1	0	1	2						0.9
Total Entries into JCF	9	14	10	11	15	12	8	11	0	0	0	0	90	11.3
Youth Exiting Facility	Jul-22	Aug-22	Sep-22	Oct-22	Nov-22	Dec-22	Jan-23	Feb-23	Mar-23	Apr-23	May-23	Jun-23	Total	Monthly Avg
Conditional Releases	7	7	11	10	10	6	6	8						8.1
Direct Discharges	1	3	6	2	3	6	3	5						3.6
Total Exits from Facility	8	10	17	12	13	12	9	13	0	0	0	0	0	11.8
Month End Population	Jul-22	Aug-22	Sep-22	Oct-22	Nov-22	Dec-22	Jan-23	Feb-23	Mar-23	Apr-23	May-23	Jun-23	Total	Monthly Avg
Total # Youth placed in JCF on last day of the month	144	148	141	139	141	142	141	139					1135	141.9

JCF Detail: Females

Youth Entering Females	Jul-22	Aug-22	Sep-22	Oct-22	Nov-22	Dec-22	Jan-23	Feb-23	Mar-23	Apr-23	May-23	Jun-23	Total	Monthly Avg
New Commitments	3	0	1	1	1	1	1	0						1.0
Return due to Technical Violations of Conditional Release	0	0	0	0	0	0	0	0						0.0
Return due to New Crime while on Conditional Release	0	0	0	0	0	0	0	0						0.0
Return from Discharge with New Adjudication	0	0	0	0	0	0	0	0						0.0
Total Entries into JCF	3	0	1	1	1	1	1	0	0	0	0	0	0	1.0
Youth Exiting Facility	Jul-22	Aug-22	Sep-22	Oct-22	Nov-22	Dec-22	Jan-23	Feb-23	Mar-23	Apr-23	May-23	Jun-23	Total	Monthly Avg
Conditional Releases	0	0	1	1	1	1	1	1						0.8
Direct Discharges	0	0	0	1	0	0	0	0						0.1
Total Exits from Facility	0	0	1	2	1	1	1	1	0	0	0	0	0	0.9
Month End Population	Jul-22	Aug-22	Sep-22	Oct-22	Nov-22	Dec-22	Jan-23	Feb-23	Mar-23	Apr-23	May-23	Jun-23	Total	Monthly Avg
Total # Youth placed in JCF on last day of the month	13	13	13	11	11	12	12	11						12.0

JCF Detail: Kansas Juvenile Correctional Complex Males

Youth Entering KJCC	Jul-22	Aug-22	Sep-22	Oct-22	Nov-22	Dec-22	Jan-23	Feb-23	Mar-23	Apr-23	May-23	Jun-23	Total	Monthly Avg
New Commitments	5	14	8	8	13	11	6	9						9.3
Return due to Technical Violations of Conditional Release	0	0	0	0	0	0	0	0						0.0
Return due to new crime while on conditional release	0	0	0	1	0	0	0	0						0.1
Return from Discharge with New Adjudication	1	0	1	1	1	0	1	2						0.9
Total Entries into JCF	6	14	9	10	14	11	7	11	0	0	0	0	0	9.8
Youth Exiting Facility	Jul-22	Aug-22	Sep-22	Oct-22	Nov-22	Dec-22	Jan-23	Feb-23	Mar-23	Apr-23	May-23	Jun-23	Total	Monthly Avg
Conditional Releases	7	7	10	9	9	5	5	7						7.4
Direct Discharges	1	3	6	1	3	6	3	5						3.5
Total Exits from Facility	8	10	16	10	12	11	8	12	0	0	0	0	0	10.9
Month End Population	Jul-22	Aug-22	Sep-22	Oct-22	Nov-22	Dec-22	Jan-23	Feb-23	Mar-23	Apr-23	May-23	Jun-23	Total	Monthly Avg
Total # Youth placed in JCF on last day of the month	131	135	128	128	130	130	129	128						129.9

JCF Month End Summary Management Information
For Youth Placed in JCF on Last Day of the Month in FY23

Statewide Summary
Fiscal Year 2023 Month End

Age	Jul	Aug	Sep	Oct	Nov	Dec	Jan	Feb	Mar	Apr	May	Jun
Average Age All Youth	17.8	17.8	17.8	17.8	17.6	17.7	17.7	17.7				
Median Age All Youth	18.0	18.0	18.0	18.0	18.0	18.0	18.0	18.0				
Average Length of Stay (Months)	13.4	13.2	13.2	13.0	12.0	11.9	12.3	12.1				
Median Length of Stay (Months)	9.3	9.4	9.7	10.1	8.3	8.0	8.7	8.0				

Female Summary
Fiscal Year 2023 Month End

Age	Jul	Aug	Sep	Oct	Nov	Dec	Jan	Feb	Mar	Apr	May	Jun
Average Age	16.9	16.9	16.8	16.8	17.1	17.3	17.6	17.8				
Median Age	18.0	18.0	18.0	18.0	18.0	18.0	18.0	18.0				
Average Length of Stay (Months)	11.3	12.3	12.9	14.3	15.0	11.7	15.4	16.9				
Median Length of Stay (Months)	7.3	8.3	9.3	10.3	11.3	8.0	11.0	14.3				

Male Summary
Fiscal Year 2023 Month End

Age	Jul	Aug	Sep	Oct	Nov	Dec	Jan	Feb	Mar	Apr	May	Jun
Average Age	17.9	17.9	17.9	17.9	17.7	17.8	17.7	17.6				
Median Age	18.0	18.0	18.0	18.0	18.0	18.0	18.0	18.0				
Average Length of Stay (Months)	13.6	13.3	13.2	12.9	11.7	14.7	12.0	11.7				
Median Length of Stay (Months)	9.8	9.4	9.8	10.0	8.3	10.0	8.2	7.9				

Age of All JCF Youth Current 2023 Month End Population

