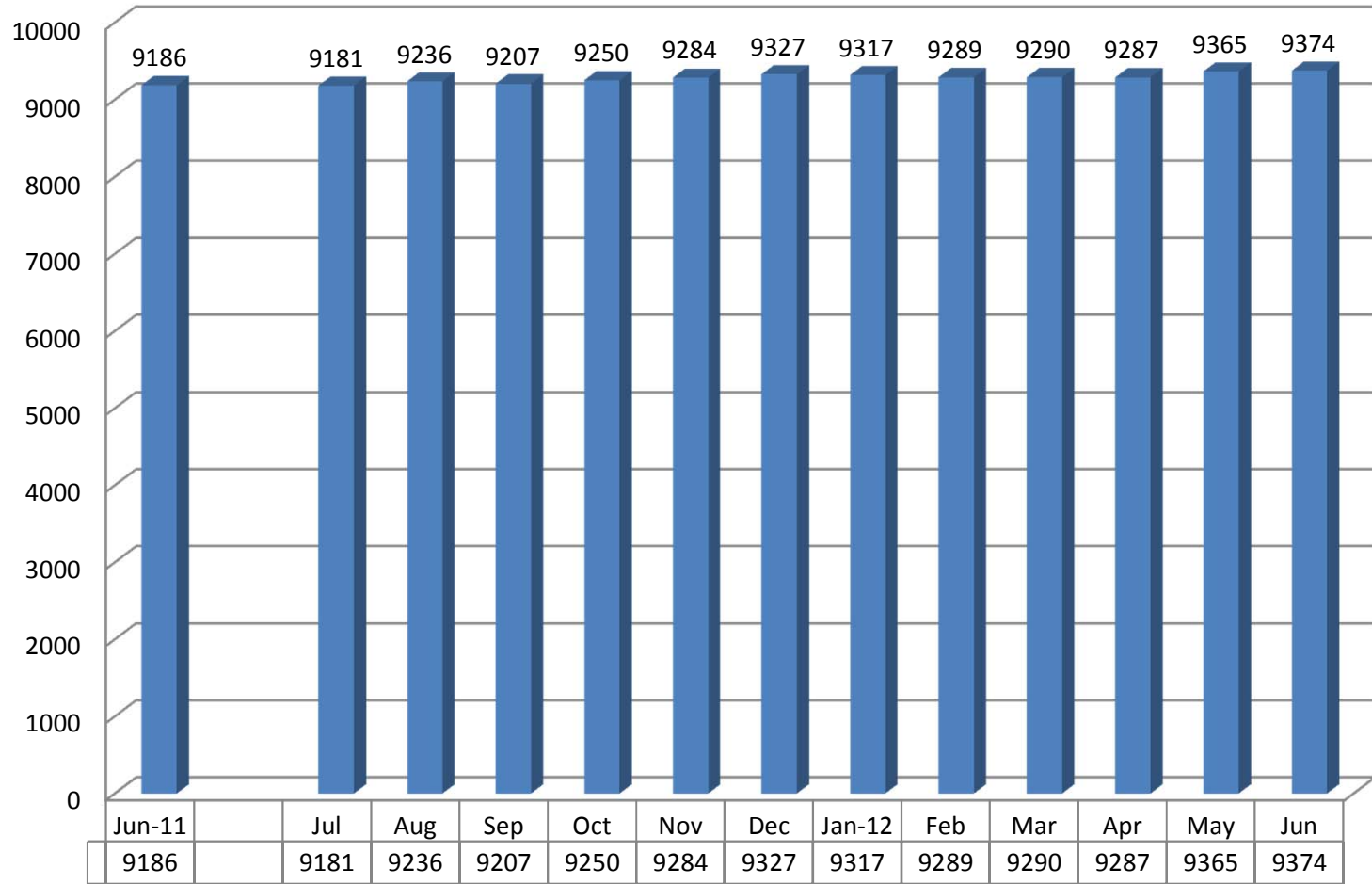


**Kansas Department of Corrections  
Graphic Highlights -- Monthly Offender Population Report (June 2012)**

**End-of-Month Inmate Population: FY 2012 Year-End**



Change from Prev. Mo.

-5    55    -29    43    34    43    -10    -28    1    -3    78    9

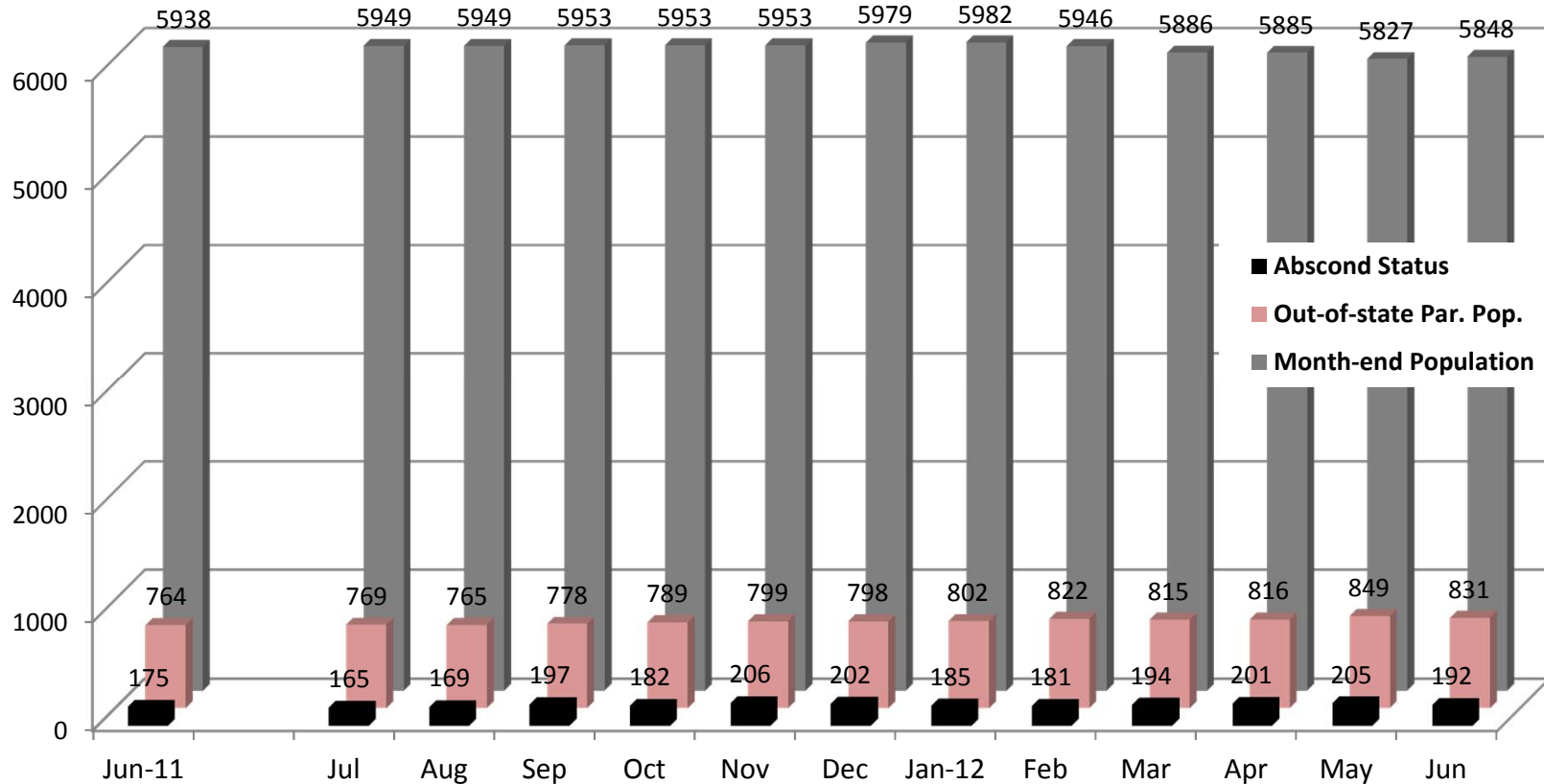
Change from June, 2011

-5    50    21    64    98    141    131    103    104    101    179    188

*\*Figures reflect the total inmate population (combined DOC and Non-DOC facility populations)*

**Kansas Department of Corrections  
Graphic Highlights -- Monthly Offender Population Report (June 2012)**

**Components of the End-of-Month Population Under Post-Incarceration Management:  
FY2012 Year-End**



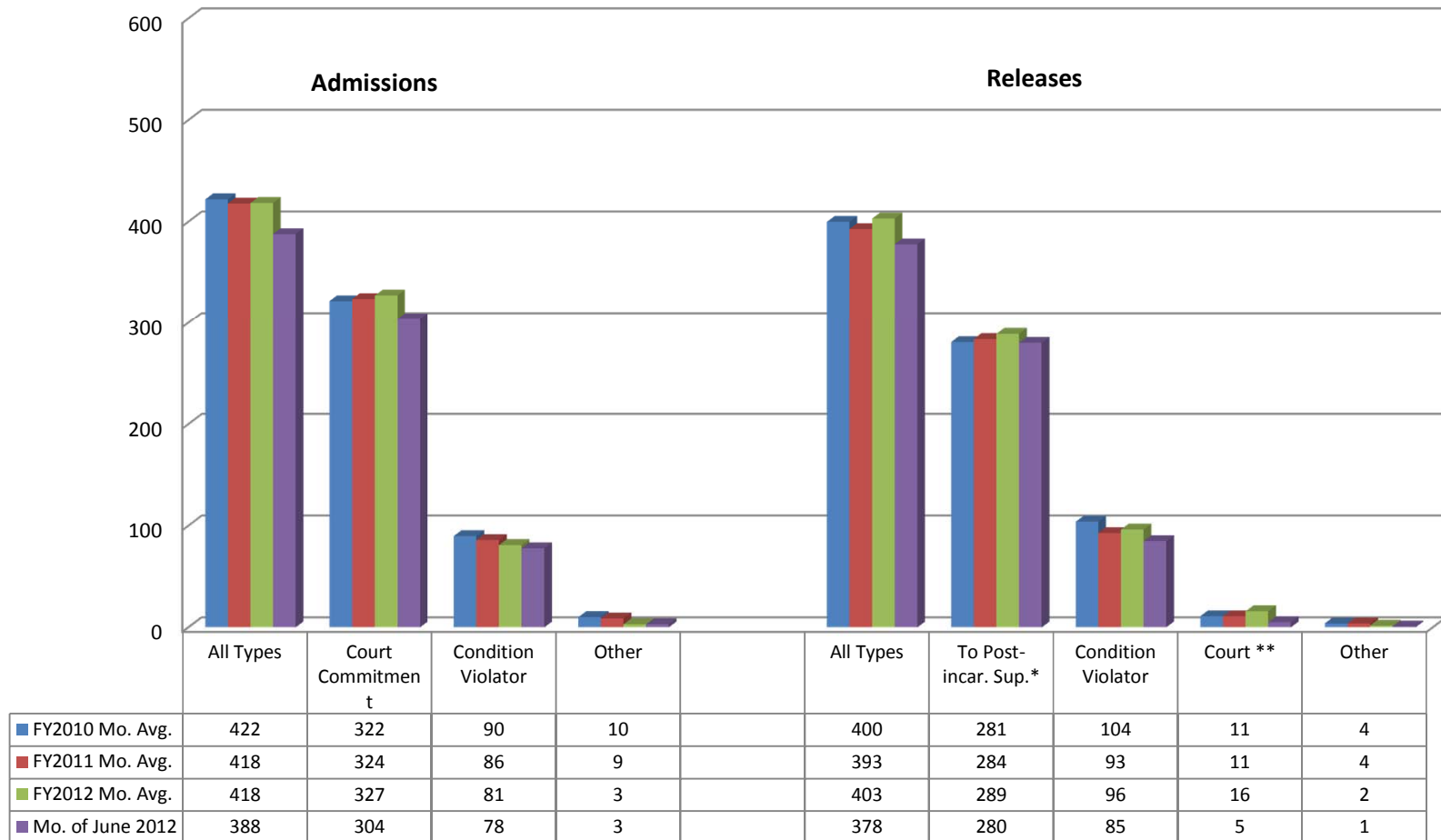
In-State Population  
(Change):

Change from Prev. Month	11	0	4	0	0	26	3	-36	-60	-1	-58	21
Change from June, 2011	11	11	15	15	15	41	44	8	-52	-53	-111	-90

*\*In-state population is comprised of Kansas offenders supervised in Kansas and out-of-state offenders supervised in Kansas. Out-of-state population is comprised of Kansas offenders supervised out-of-state. Those on abscond status have active warrants (whereabouts unknown).*

Kansas Department of Corrections  
Graphic Highlights -- Monthly Offender Population Report (June 2012)

**Number of Admission and Release Events Per Month (by Major Category): Comparison of FY2010, FY2011, and FY2012 Year-End Monthly Averages with Current Month's Totals**



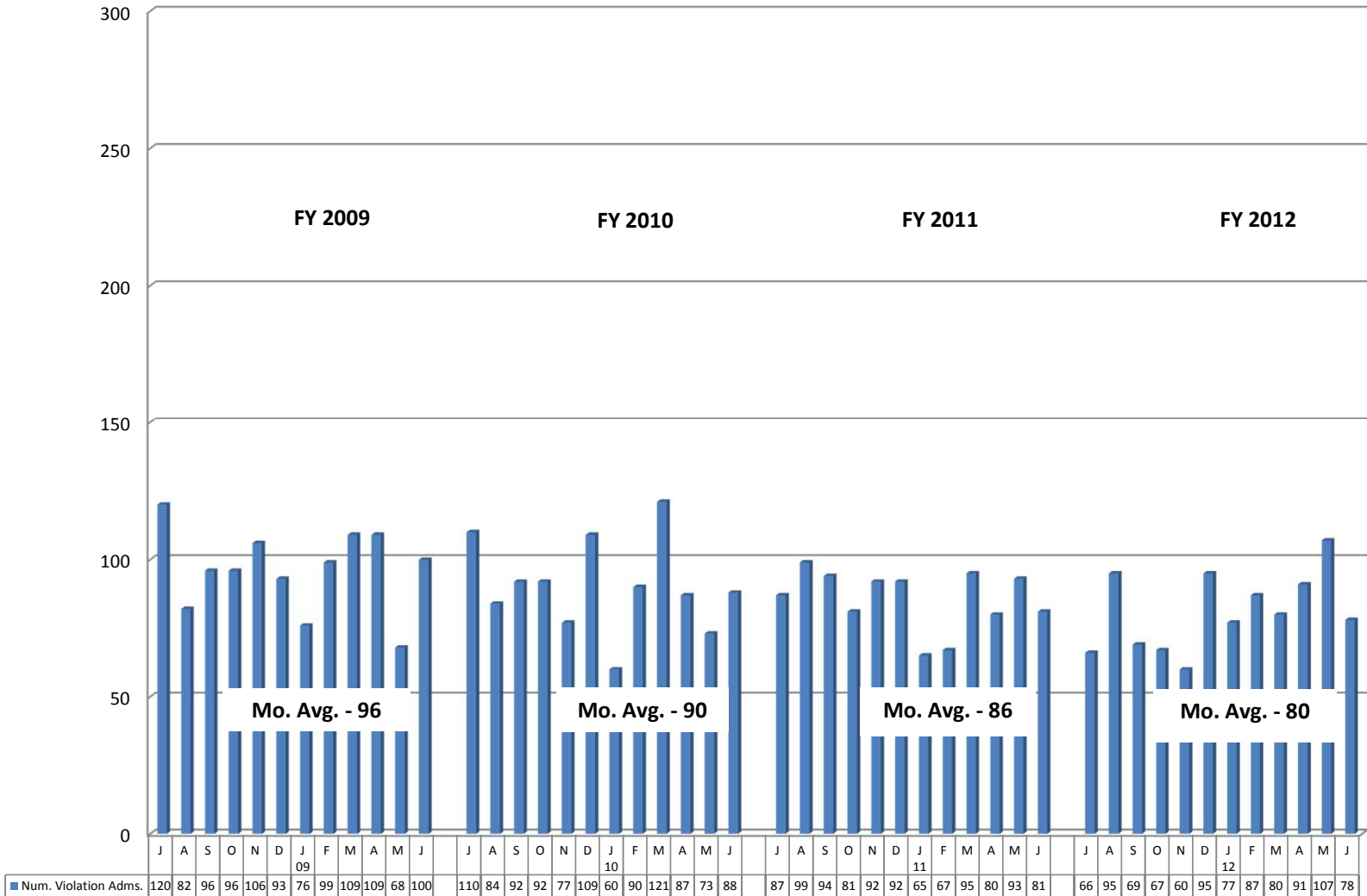
\* Includes releases to supervision via the provisions of the Kansas Sentencing Guidelines Act of 1993, as well as parole releases by action of the Kansas Prisoner Review Board.

\*\*Figure can be a negative number for a particular month [since it is based on the total number whose last exit for the period (fiscal year to date) was via "out-to-court" minus the previous month's total, which can be a smaller or greater number].

Kansas Department of Corrections

Graphic Highlights -- Monthly Offender Population Report (June 2012)

**Number of Return Admissions for Condition Violations by Month: FY2009 - FY2012\***



\*Total number of admissions for violation of the conditions of release (no new sentence).

\*\*The average number of escapees has been excluded in the average - which is 1.4 offenders.

Kansas Department of Corrections  
 End-of-Month Offender Population Report: June 2012 (Month 12, FY 2012)

**Table 1**  
**Number of Inmates Confined and Average Daily Population: FY 2011 and FY 2012**

Correctional Facility	Number Confined			Average Daily Population***		
	5/31/2012	6/30/2012	Change	FY 2011	FY 2012	Change
<b>KDOC Facilities</b>						
<b>Lansing: Total</b>	<b>2,407</b>	<b>2,401</b>	<b>-6</b>	<b>2,368</b>	<b>2,409</b>	<b>41</b>
Central	1,782	1,775	-7	1,749	1,787	38
East	625	626	1	619	622	3
** South (Osawatomie)	-	-	0			0
<b>Hutchinson: Total</b>	<b>1,843</b>	<b>1,869</b>	<b>26</b>	<b>1,863</b>	<b>1,852</b>	<b>-11</b>
Central	1,062	1,086	24	1,086	1,072	-14
East	495	496	1	493	495	2
South	238	239	1	238	239	1
Work Release	48	48	0	46	46	0
<b>El Dorado: Total</b>	<b>1,359</b>	<b>1,352</b>	<b>-7</b>	<b>1,281</b>	<b>1,338</b>	<b>57</b>
Central (General Population)	1,003	999	-4	937	977	40
Central - RDU	356	353	-3	344	361	17
** East (Toronto)	-	-	0			0
** North	-	-	0			0
<b>Topeka: Total</b>	<b>672</b>	<b>681</b>	<b>9</b>	<b>615</b>	<b>649</b>	<b>34</b>
Central (General Population)	590	608	18	560	574	14
RDU	59	54	-5	30	54	24
* Federal Inmates	4	4	0	7	5	-2
Work Release	19	15	-4	18	16	-2
<b>Norton: Total</b>	<b>837</b>	<b>842</b>	<b>5</b>	<b>808</b>	<b>840</b>	<b>32</b>
Central	715	718	3	716	716	0
** East (Stockton) <i>re-opened 9-2010</i>	122	124	2	114	124	10
<b>Ellsworth</b>	<b>820</b>	<b>823</b>	<b>3</b>	<b>820</b>	<b>817</b>	<b>-3</b>
General Population	820	823	3	820	817	-3
Work Release			0			0
<b>Winfield: Total</b>	<b>806</b>	<b>793</b>	<b>-13</b>	<b>790</b>	<b>794</b>	<b>4</b>
Central	555	545	-10	541	550	9
Wichita Work Release	251	248	-3	249	244	-5
<b>Larned CMHF (Total)</b>	<b>431</b>	<b>434</b>	<b>3</b>	<b>369</b>	<b>400</b>	<b>31</b>
Central	148	151	3	150	146	-4
West	283	283	0	219	254	35
Work Release			0			0
<b>Subtotal: KDOC Facilities</b>	<b>9,175</b>	<b>9,195</b>	<b>20</b>	<b>8,914</b>	<b>9,099</b>	<b>185</b>
<b>Non-KDOC Facilities</b>						
Larned State Hospital	105	106	1	105	107	2
Contract Jail Placement [County]	76	65	-11	-	55	55
Contract Placement [Out-of-state]			0	-	-	0
** Labette CCC			0			0
Johnson County Res. Center (WR)	9	6	-3	6	6	0
<b>Subtotal: Non-KDOC Facilities</b>	<b>190</b>	<b>177</b>	<b>-13</b>	<b>111</b>	<b>168</b>	<b>57</b>
<b>Total: All Facilities/Placements</b>	<b>9,365</b>	<b>9,372</b>	<b>7</b>	<b>9,025</b>	<b>9,267</b>	<b>242</b>
<b>Female Population (included in totals above)</b>						
Topeka	672	666	-6	615	633	18
Winfield (WWR)			0			0
Contract Jail (Jo. Co. Res. Center)	2	2	0		1	1
Larned State Hospital	13	13	0	13	13	0
** Labette CCC			0			0
<b>Subtotal: Females</b>	<b>687</b>	<b>681</b>	<b>-6</b>	<b>628</b>	<b>647</b>	<b>19</b>

\* Federal inmates housed at TCF under contract between the Federal Bureau of Prisons and the Kansas Department of Corrections.

\*\* Housing unit closed (or placement option removed) during FY 2009 because of budget constrictions. NCF-East (Stockton) re-opened 9-2010.

\*\*\* Average Daily Population (ADP) columns: Because of rounding, the sum of the units might not equal the total for the facility. And, the sum of the facilities might not equal the grand total.

Kansas Department of Corrections  
End-of-Month Offender Population Report: June 2012 (Month 12, FY 2012)

**Table 2**  
**Total Admission and Release Events: FY 2010, FY 2011, and FY 2012**

<u>Type of Admission</u>	Total Admissions			Avg. Number Per Month		
	FY 2010	FY 2011	FY 2012	FY 2010	FY 2011	FY 2012
<b>Admissions by Court Action:</b>						
New Court Commitment	1,883	1,976	1,904	156.9	164.7	158.7
Probation Violator, No New Sentence	1,713	1,623	1,664	142.8	135.3	138.7
Probation Violator, New Sentence	84	91	179	7.0	7.6	14.9
Parole Violator, New Sentence	163	161	141	13.6	13.4	11.8
Parole to Detainer, New Sentence	-	-	18	0.0	0.0	1.5
Conditional Release Violator, New Sentence	-	1	-	0.0	0.1	0.0
Non-violator Return, New Sentence (020-6020)	24	23	29	2.0	1.9	2.4
<b>Subtotal: Court Commitments</b>	<b>3,867</b>	<b>3,875</b>	<b>3,935</b>	<b>322.3</b>	<b>322.9</b>	<b>327.9</b>
Return from Court Appearance	58	71	75	4.8	5.9	6.3
<b>Subtotal: Admission by Court Action</b>	<b>3,925</b>	<b>3,946</b>	<b>4,010</b>	<b>327.1</b>	<b>328.8</b>	<b>334.2</b>
<b>Return by KDOC Action:</b>						
Parole Violator, No New Sentence	1,080	1,021	950	90.0	85.1	79.2
Conditional Release Violator, No New Sentence	3	4	3	0.3	0.3	0.3
Return from Escape	14	10	17	1.2	0.8	1.4
Non-violator Return, No New Sentence (020-6010)	1	2	2	0.1	0.2	0.2
Par/CR/PRS/ Adm. Hold--Poss. Vio.	-	-	-	0.0	0.0	0.0
<b>Subtotal: Return by KDOC Action</b>	<b>1,098</b>	<b>1,037</b>	<b>972</b>	<b>91.5</b>	<b>86.4</b>	<b>81.0</b>
<b>Inter-jurisdictional Transfer:</b>						
Interstate/Federal Compact Received	11	8	10	0.9	0.7	0.8
Kansas Inmate Returned from Another Jurisdiction	25	19	26	2.1	1.6	2.2
<b>Subtotal: Inter-jurisdictional Transfer</b>	<b>36</b>	<b>27</b>	<b>36</b>	<b>3.0</b>	<b>2.3</b>	<b>3.0</b>
<b>Total: All Types of Admission</b>	<b>5,059</b>	<b>5,010</b>	<b>5,018</b>	<b>421.6</b>	<b>417.5</b>	<b>418.2</b>

Note: Totals may be slightly off due to rounding

Source: KDOC computerized report PGM-ISR0445.

Kansas Department of Corrections  
End-of-Month Offender Population Report: June 2012 (Month 12, FY 2012)

**Table 2 (continued)**  
**Total Admission and Release Events: FY 2010, FY 2011, and FY 2012**

<u>Type of Release</u>	Total Releases			Avg. Number Per Month		
	FY 2010	FY 2011	FY2012	FY 2010	FY 2011	FY2012
<b>Release to Post-incarceration Supervision**</b>	<b>3,369</b>	<b>3,419</b>	<b>3,467</b>	<b>280.8</b>	<b>284.9</b>	<b>288.9</b>
<b>Conditional Release</b>	<b>7</b>	<b>12</b>	<b>2</b>	<b>0.6</b>	<b>1.0</b>	<b>0.2</b>
<b>Expiration of Sentence</b>	<b>1,242</b>	<b>1,115</b>	<b>1,155</b>	<b>103.5</b>	<b>92.9</b>	<b>96.3</b>
<b>Commutation or Pardon</b>	<b>-</b>	<b>-</b>	<b>-</b>	<b>0.0</b>	<b>0.0</b>	<b>0.0</b>
<b>Inter-jurisdictional Transfer:</b>						
Kansas Inmate Released for Housing	13	8	15	1.1	0.7	1.3
Interstate/Fed. Inmate Released to Sending Juris.	13	12	10	1.1	1.0	0.8
<b>Subtotal: Inter-jurisdictional Transfer</b>	<b>26</b>	<b>20</b>	<b>25</b>	<b>2.2</b>	<b>1.7</b>	<b>2.1</b>
<b>Court-ordered Release:</b>						
Probation	6	4	4	0.5	0.3	0.3
Returned Parolee Placed on Probation	-	-	-	0.0	0.0	0.0
Released on Appeal Bond	10	1	3	0.8	0.1	0.3
Released for Court Appearance	92	111	132	7.7	9.3	11.0
Other Final Release by Court Order	19	15	8	1.6	1.3	0.7
<b>Subtotal: Court-ordered Release</b>	<b>127</b>	<b>131</b>	<b>147</b>	<b>10.6</b>	<b>10.9</b>	<b>12.3</b>
<b>Escape</b>	<b>9</b>	<b>7</b>	<b>21</b>	<b>0.8</b>	<b>0.6</b>	<b>1.8</b>
<b>Death (All Causes)</b>	<b>21</b>	<b>20</b>	<b>22</b>	<b>1.8</b>	<b>1.7</b>	<b>1.8</b>
<b>Total: All Types of Release</b>	<b>4,801</b>	<b>4,724</b>	<b>4,839</b>	<b>400.1</b>	<b>393.7</b>	<b>403.3</b>

\* Certain types of transactions involving known temporary exits from a correctional facility have been excluded from the body of the table (release to court/return from court--1,175 in FY2010, 1,268 in FY2011, and 1187 in FY2012).

\*\* Includes releases to post-incarceration supervision via the provisions of the Kansas Sentencing Guidelines Act of July 1993, as well as parole releases by action of the Kansas Prisoner Review Board.

Note: Totals may be slightly off due to rounding

Kansas Department of Corrections  
 End-of-Month Offender Population Report: June 2012 (Month 12, FY 2012)  
**Table 3**  
**Distribution of Inmate Population by Type of Latest Admission:**  
**Comparison of May 31st and June 30th, 2012**

*Note. The information presented here pertains to the inmate population on the specified dates and not to admissions during the period.*

Type of Admission [Latest Admission Per Master Record]		*Number of Inmates		
Admission Code [OMIS]	Admission Description	5/31/2012	6/30/2012	Difference May Minus June
<b>Admission by Court Action:</b>				
010-1010	New Court Commitment	6,140	6,132	(8)
010-2010	Probation Violator, No New Sentence	1,539	1,576	37
010-2020	Probation Violator, New Sentence	273	271	(2)
020-1020 & 020-1025	Parole Violator, New Sentence	673	672	(1)
020-2020	Conditional Release Violator, New Sentence	32	32	-
020-6020	Non-violator Return, New Sentence	33	33	-
<b>Subtotal: Latest Adm. as Court Commitment</b>		<b>8,690</b>	<b>8,716</b>	<b>26</b>
<b>Return by KDOC Action:</b>				
020-1010	Parole Violator, No New Sentence	547	529	(18)
020-2010	Conditional Release Violator, No New Sentence	26	26	-
020-5010	Return from Escape	1	1	-
020-6010	Non-violator Return, No New Sentence	2	2	-
040-1010	Par/CR/PRS/ Adm. Hold--Poss. Vio.			-
<b>Subtotal: Latest Adm. as Return by KDOC Action</b>		<b>576</b>	<b>558</b>	<b>(18)</b>
<b>Inter-jurisdictional Transfer:</b>				
010-4010	Interstate/Federal Compact Received	73	73	-
020-3010	Kansas Inmate Returned from Another Jurisdiction	24	25	1
<b>Subtotal: Latest Adm. as Inter-jurisdictional Transfer</b>		<b>97</b>	<b>98</b>	<b>1</b>
<b>Total: All Types of Admission</b>		<b>9,363</b>	<b>9,372</b>	<b>9</b>

\*The SAS end-of-month population figure sometimes varies slightly from the OMIS population report because the SAS file is generated at a different time of day than the OMIS population report. (In this case it differs by 2 for May and 2 for June).