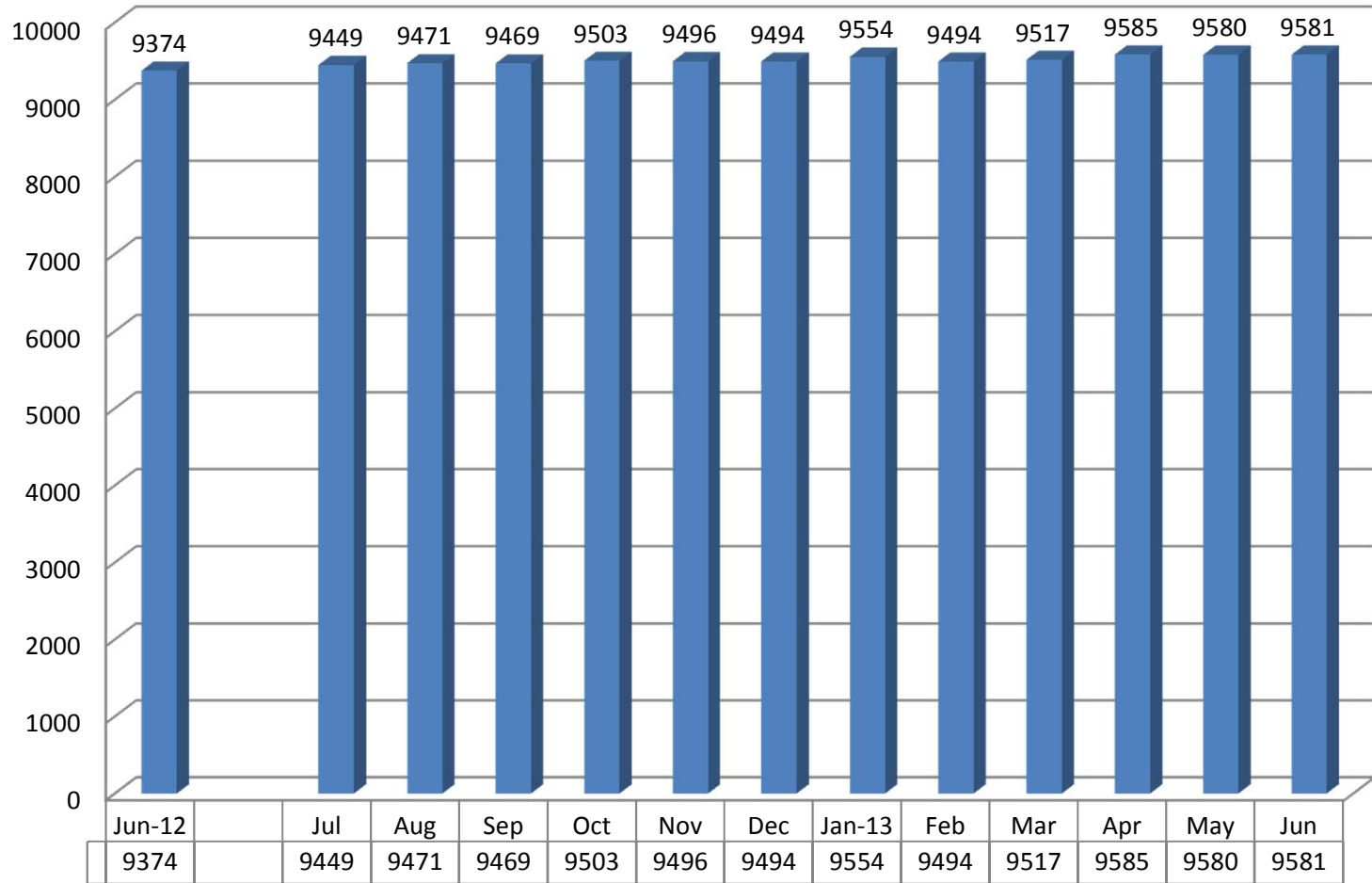


**Kansas Department of Corrections  
Graphic Highlights -- Monthly Offender Population Report (June 2013)**

**End-of-Month Inmate Population: FY 2013 To-Date**



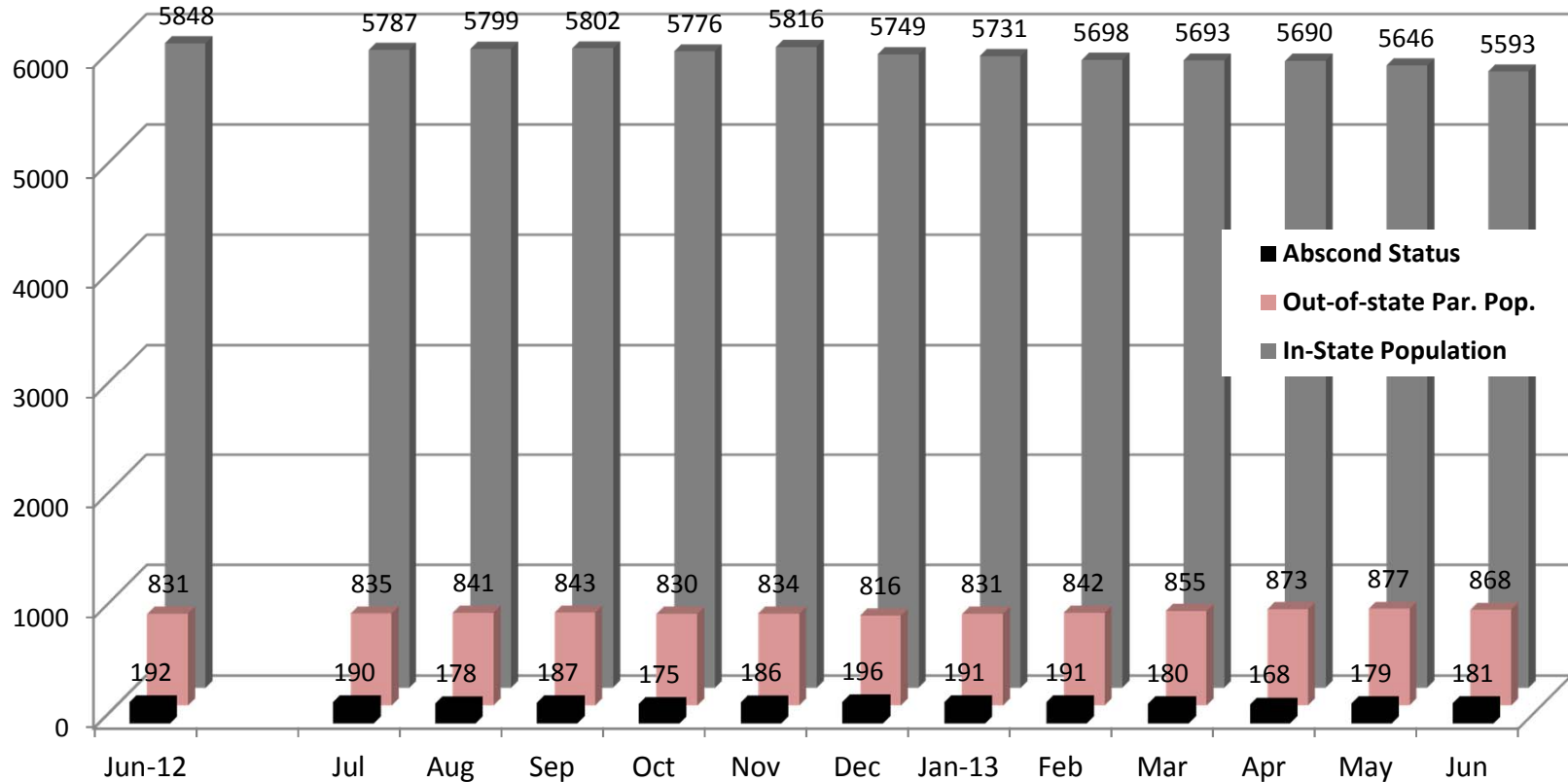
Change from Prev. Mo.  
Change from June, 2012

	75	22	-2	34	-7	-2	60	-60	23	68	-5	1
	75	97	95	129	122	120	180	120	143	211	206	207

*\*Figures reflect the total inmate population (combined DOC and Non-DOC facility populations)*

**Kansas Department of Corrections  
Graphic Highlights -- Monthly Offender Population Report (June 2013)**

**Components of the End-of-Month Population Under Post-Incarceration Management:  
FY2013**



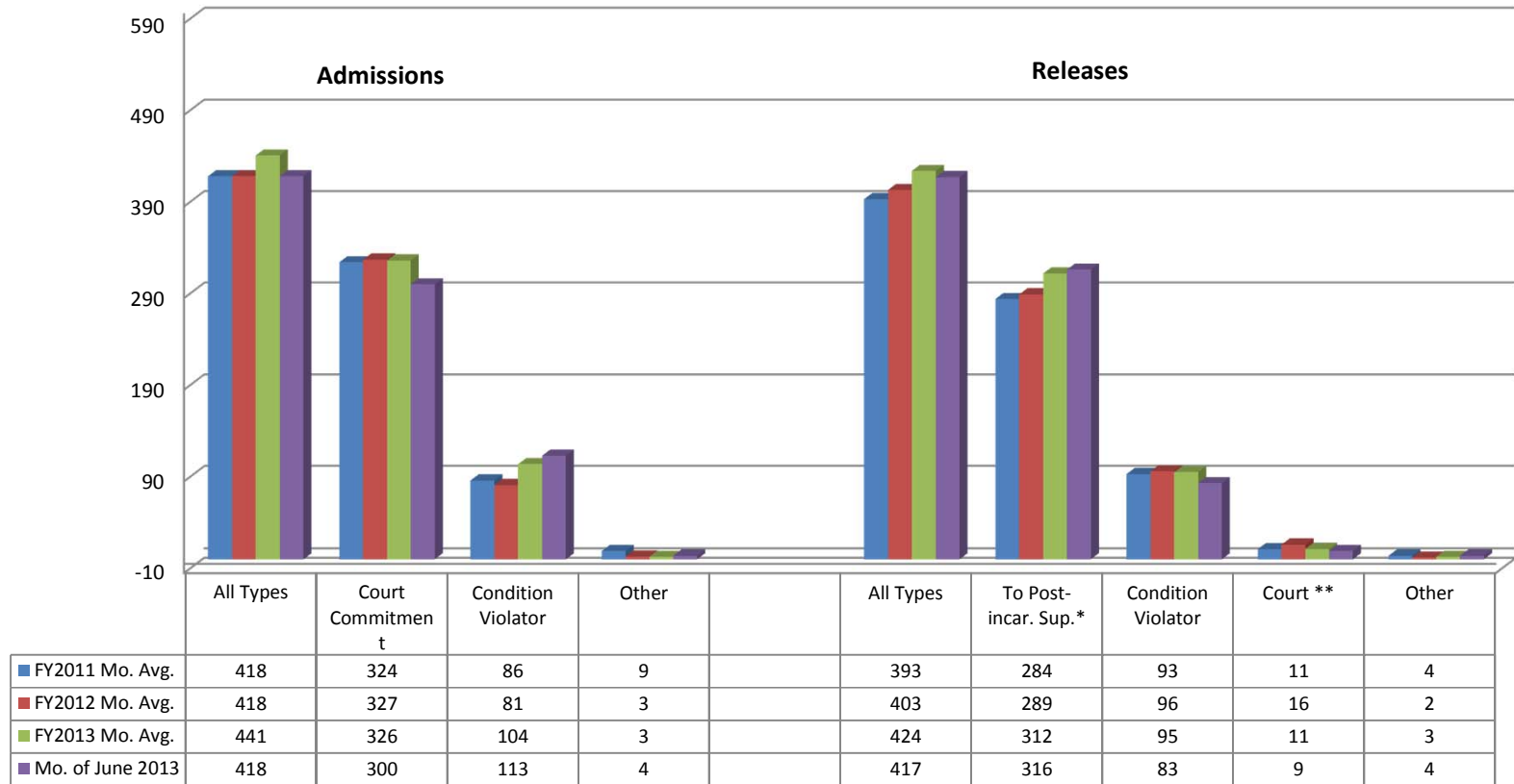
In-State Population  
(Change):

Change from Prev. Month	-61	12	3	26	40	-67	-18	-33	-5	-3	-44	-53
Change from June, 2012	-61	-49	-46	-72	-32	-99	-117	-150	-155	-158	-202	-255

*\*In-state population is comprised of Kansas offenders supervised in Kansas and out-of-state offenders supervised in Kansas. Out-of-state population is comprised of Kansas offenders supervised out-of-state. Those on abscond status have active warrants (whereabouts unknown).*

Kansas Department of Corrections  
Graphic Highlights -- Monthly Offender Population Report (June 2013)

**Number of Admission and Release Events Per Month (by Major Category): Comparison of FY2011, FY2012 & 2013 Monthly Averages with Current Month's Totals**



\* Includes releases to supervision via the provisions of the Kansas Sentencing Guidelines Act of 1993, as well as parole releases by action of the Kansas Prisoner Review Board.

\*\*Figure can be a negative number for a particular month [since it is based on the total number whose last exit for the period (fiscal year to date) was via "out-to-court" minus the previous month's total, which can be a smaller or greater number].

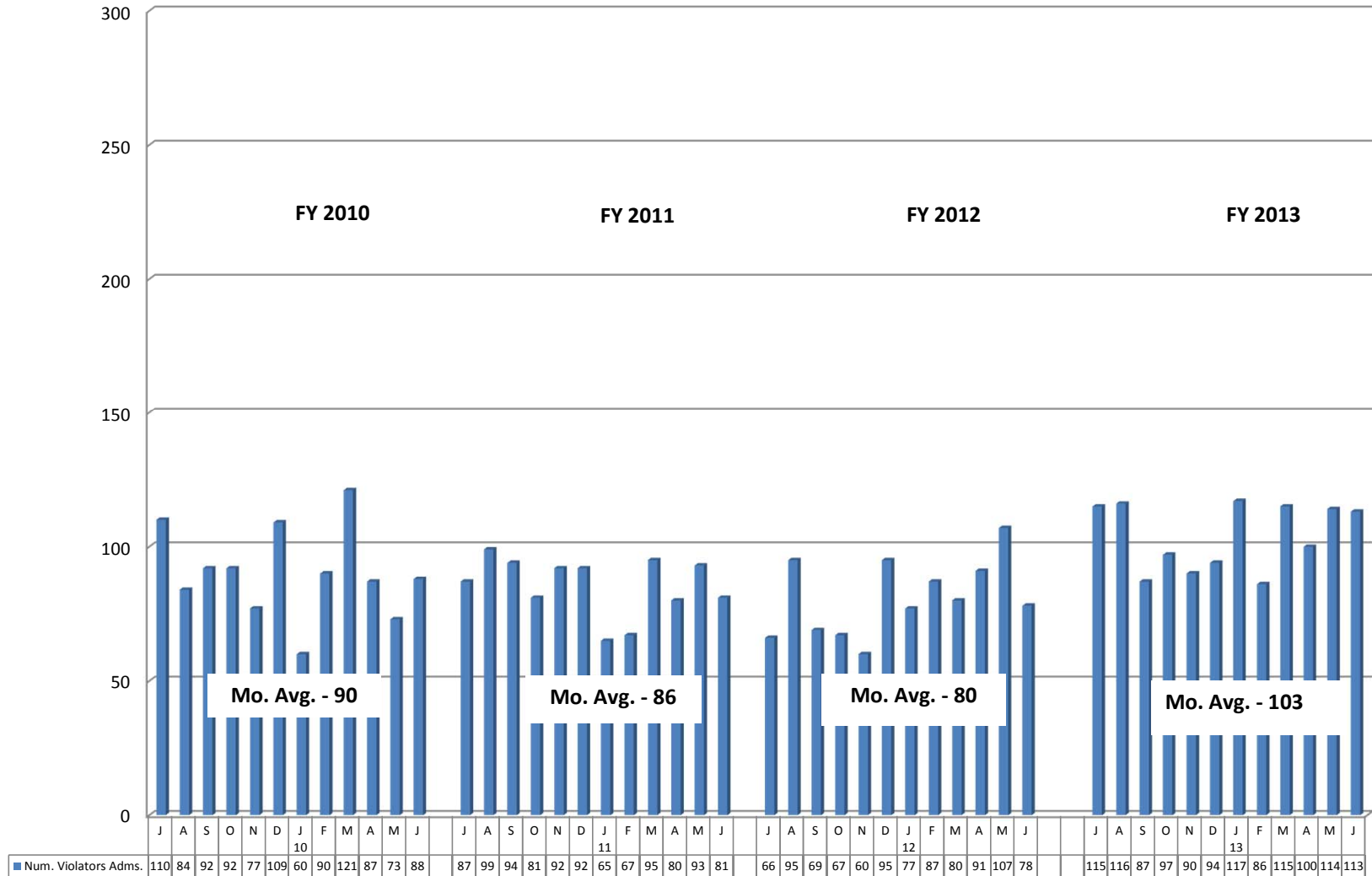
\*\*\*Returned from court appearance is included in the All Types Admission total; returned from escape are included in the All Type Releases total but not it's own personal category and Inter-Jurisdictional transfers are included in the All Types Releases total (included in chart).

\*\*\*\*Number of escapees and Non-Violator Return - No New Sentence is not included in the Admissions

Kansas Department of Corrections

Graphic Highlights -- Monthly Offender Population Report (June 2013)

**Number of Return Admissions for Condition Violations by Month: FY2010 - FY2013\***



\*Total number of admissions for violation of the conditions of release (no new sentence).

\*\*The average number of escapees has been excluded in the average - which is 1 offender.

Kansas Department of Corrections  
 End-of-Month Offender Population Report: June 2013 (Month 12, FY 2013)

**Table 1**  
**Number of Inmates Confined and Average Daily Population: FY 2012 and FY 2013**

Correctional Facility	Number Confined			Average Daily Population***		
	5/31/2013	6/30/2013	Change	FY 2012	FY 2013	Change
<b>KDOC Facilities</b>						
<b>Lansing: Total</b>	<b>2,424</b>	<b>2,415</b>	<b>-9</b>	<b>2,409</b>	<b>2,414</b>	<b>5</b>
Central	1,805	1,801	-4	1,787	1,798	11
East	619	614	-5	622	616	-6
** South (Osawatomie)	-	-	0			0
<b>Hutchinson: Total</b>	<b>1,845</b>	<b>1,820</b>	<b>-25</b>	<b>1,852</b>	<b>1,867</b>	<b>15</b>
Central	1,069	1,039	-30	1,072	1,090	18
East	494	496	2	495	493	-2
South	237	238	1	239	237	-2
Work Release	45	47	2	46	47	1
<b>El Dorado: Total</b>	<b>1,548</b>	<b>1,558</b>	<b>10</b>	<b>1,338</b>	<b>1,425</b>	<b>87</b>
Central (General Population)	978	974	-4	977	984	7
Central - RDU	362	378	16	361	356	-5
South-East	208	206	-2		85	85
<b>Topeka: Total</b>	<b>700</b>	<b>722</b>	<b>22</b>	<b>649</b>	<b>705</b>	<b>56</b>
Central (General Population)	652	660	8	574	644	70
RDU	31	47	16	54	45	-9
* Federal Inmates			0	5	1	-4
Work Release	17	15	-2	16	15	-1
<b>Norton: Total</b>	<b>820</b>	<b>825</b>	<b>5</b>	<b>840</b>	<b>828</b>	<b>-12</b>
Central	697	703	6	716	712	-4
** East (Stockton) re-opened 9-2010	123	122	-1	124	116	-8
<b>Ellsworth</b>	<b>897</b>	<b>898</b>	<b>1</b>	<b>817</b>	<b>880</b>	<b>63</b>
General Population	897	898	1	817	880	63
Work Release			0			0
<b>Winfield: Total</b>	<b>798</b>	<b>796</b>	<b>-2</b>	<b>794</b>	<b>796</b>	<b>2</b>
Central	549	545	-4	550	546	-4
Wichita Work Release	249	251	2	244	250	6
<b>Larned CMHF (Total)</b>	<b>433</b>	<b>435</b>	<b>2</b>	<b>400</b>	<b>433</b>	<b>33</b>
Central	151	154	3	146	152	6
West	282	281	-1	254	281	27
Work Release			0			0
<b>Subtotal: KDOC Facilities</b>	<b>9,465</b>	<b>9,469</b>	<b>4</b>	<b>9,099</b>	<b>9,348</b>	<b>249</b>
<b>Non-KDOC Facilities</b>						
Larned State Hospital	104	102	-2	107	106	-1
Contract Jail Placement [County]	4	3	-1	55	49	-6
Contract Placement [Out-of-state]			0	-	-	0
** Labette CCC			0			0
Johnson County Res. Center (WR)	7	7	0	6	4	-2
<b>Subtotal: Non-KDOC Facilities</b>	<b>115</b>	<b>112</b>	<b>-3</b>	<b>168</b>	<b>159</b>	<b>-9</b>
<b>Total: All Facilities/Placements</b>	<b>9,580</b>	<b>9,581</b>	<b>1</b>	<b>9,267</b>	<b>9,507</b>	<b>240</b>
<b>Female Population (included in totals above)</b>						
Topeka	700	722	22	665	706	41
Winfield (WWR)			0			0
Contract Jail (Jo. Co. Res. Center)	4	4	0	2	1	-1
Larned State Hospital	11	10	-1	14	13	-1
** Labette CCC			0			0
<b>Subtotal: Females</b>	<b>715</b>	<b>736</b>	<b>21</b>	<b>681</b>	<b>720</b>	<b>39</b>

\* Federal inmates housed at TCF under contract between the Federal Bureau of Prisons and the Kansas Department of Corrections.

\*\* Housing unit closed (or placement option removed) during FY 2009 because of budget constraints. NCF-East (Stockton) re-opened 9-2010.

\*\*\* Average Daily Population (ADP) columns: Because of rounding, the sum of the units might not equal the total for the facility. And, the sum of the facilities might not equal the grand total.

Kansas Department of Corrections  
End-of-Month Offender Population Report: June 2013 (Month 12, FY 2013)

**Table 2**  
**Total Admission and Release Events: FY 2011, FY 2012, and FY 2013**

<u>Type of Admission</u>	Total Admissions			Avg. Number Per Month		
	FY 2011	FY 2012	FY 2013	FY 2011	FY 2012	FY 2013
<b>Admissions by Court Action:</b>						
New Court Commitment	1,976	1,904	1,856	164.7	158.7	154.7
Probation Violator, No New Sentence	1,623	1,664	1,620	135.3	138.7	135.0
Probation Violator, New Sentence	91	179	198	7.6	14.9	16.5
Parole Violator, New Sentence	161	141	177	13.4	11.8	14.8
Parole to Detainer, New Sentence	-	18	33	0.0	1.5	2.8
Non Violator Return, New Sentence	23	29	28	1.9	2.4	2.3
Conditional Release Violator, New Sentence	1	-	-	0.1	0.0	0.0
<b>Subtotal: Court Commitments</b>	<b>3,875</b>	<b>3,935</b>	<b>3,912</b>	<b>322.9</b>	<b>327.9</b>	<b>326.0</b>
Return from Court Appearance	71	75	97	5.9	6.3	8.1
<b>Subtotal: Admission by Court Action</b>	<b>3,946</b>	<b>4,010</b>	<b>4,009</b>	<b>328.8</b>	<b>334.2</b>	<b>334.1</b>
<b>Return by KDOC Action:</b>						
Parole Violator, No New Sentence	1,021	950	1,231	85.1	79.2	102.6
Return from Escape	10	17	15	0.8	1.4	1.3
Par/CR/PRS/ Adm. Hold--Poss. Vio.	-	-	-	0.0	0.0	0.0
<b>Subtotal: Return by KDOC Action</b>	<b>1,031</b>	<b>967</b>	<b>1,246</b>	<b>85.9</b>	<b>80.6</b>	<b>103.8</b>
<b>Inter-jurisdictional Transfer:</b>						
Interstate/Federal Compact Received	8	10	9	0.7	0.8	0.8
Kansas Inmate Returned from Another Jurisdiction	19	26	25	1.6	2.2	2.1
<b>Subtotal: Inter-jurisdictional Transfer</b>	<b>27</b>	<b>36</b>	<b>34</b>	<b>2.3</b>	<b>3.0</b>	<b>2.8</b>
<b>Total: All Types of Admission</b>	<b>5,004</b>	<b>5,013</b>	<b>5,289</b>	<b>417.0</b>	<b>417.8</b>	<b>440.8</b>

Note: Totals may be slightly off when comparing to page 3 due to rounding.

Source: KDOC computerized report PGM-ISR0445.

Kansas Department of Corrections  
End-of-Month Offender Population Report: June 2013 (Month 12, FY 2013)

**Table 2 (continued)**  
**Total Admission and Release Events: FY 2011, FY 2012, and FY 2013**

<u>Type of Release</u>	Total Releases			Avg. Number Per Month		
	FY 2011	FY 2012	FY 2013	FY 2011	FY 2012	FY 2013
<b>Release to Post-incarceration Supervision**</b>	<b>3,419</b>	<b>3,467</b>	<b>3,741</b>	<b>284.9</b>	<b>288.9</b>	<b>311.8</b>
<b>Conditional Release</b>	<b>12</b>	<b>2</b>	<b>-</b>	<b>1.0</b>	<b>0.2</b>	<b>0.0</b>
<b>Expiration of Sentence</b>	<b>1,115</b>	<b>1,155</b>	<b>1,140</b>	<b>92.9</b>	<b>96.3</b>	<b>95.0</b>
<b>Commutation or Pardon</b>	<b>-</b>	<b>-</b>	<b>-</b>	<b>0.0</b>	<b>0.0</b>	<b>0.0</b>
<b>Inter-jurisdictional Transfer:</b>						
Kansas Inmate Released for Housing	8	15	12	0.7	1.3	1.0
Interstate/Fed. Inmate Released to Sending Juris.	12	10	14	1.0	0.8	1.2
<b>Subtotal: Inter-jurisdictional Transfer</b>	<b>20</b>	<b>25</b>	<b>26</b>	<b>1.7</b>	<b>2.1</b>	<b>2.2</b>
<b>Court-ordered Release:</b>						
Probation	4	4	5	0.3	0.3	0.4
Returned Parolee Placed on Probation	-	-	-	0.0	0.0	0.0
Released on Appeal Bond	1	3	2	0.1	0.3	0.2
Released for Court Appearance	111	132	111	9.3	11.0	9.3
Other Final Release by Court Order	15	8	20	1.3	0.7	1.7
<b>Subtotal: Court-ordered Release</b>	<b>131</b>	<b>147</b>	<b>138</b>	<b>10.9</b>	<b>12.3</b>	<b>11.5</b>
<b>Escape</b>	<b>7</b>	<b>21</b>	<b>13</b>	<b>0.6</b>	<b>1.8</b>	<b>1.1</b>
<b>Death (All Causes)</b>	<b>20</b>	<b>22</b>	<b>30</b>	<b>1.7</b>	<b>1.8</b>	<b>2.5</b>
<b>Total: All Types of Release</b>	<b>4,724</b>	<b>4,839</b>	<b>5,088</b>	<b>393.7</b>	<b>403.3</b>	<b>424.0</b>

\* Certain types of transactions involving known temporary exits from a correctional facility have been excluded from the body of the table (release to court/return from court--1,268 in FY2011, 1187 in FY2012, and 1168 in FY2013).

\*\* Includes releases to post-incarceration supervision via the provisions of the Kansas Sentencing Guidelines Act of July 1993, as well as parole releases by action of the Kansas Prisoner Review Board.

Note: Totals may be slightly off due to rounding when comparing to page 3

Kansas Department of Corrections  
 End-of-Month Offender Population Report: June 2013 (Month 12, FY 2013)  
**Table 3**  
**Distribution of Inmate Population by Type of Latest Admission:**  
**Comparison of May 31st, 2013 and June 30th, 2013**

*Note. The information presented here pertains to the inmate population, on the specified dates and not to admissions during the period.*

Type of Admission [Latest Admission Per Master Record]		*Number of Inmates		
Admission Code [OMIS]	Admission Description	5/31/2013	6/30/2013	Difference May minus June
<b>Admission by Court Action:</b>				
010-1010	New Court Commitment	6,212	6,211	(1)
010-2010	Probation Violator, No New Sentence	1,592	1,573	(19)
010-2020	Probation Violator, New Sentence	316	329	13
020-1020 & 020-1025	Parole Violator, New Sentence	697	700	3
020-2020	Conditional Release Violator, New Sentence	31	31	-
020-6020	Non-violator Return, New Sentence	39	39	-
<b>Subtotal: Latest Adm. as Court Commitment</b>		<b>8,887</b>	<b>8,883</b>	<b>(4)</b>
<b>Return by KDOC Action:</b>				
020-1010	Parole Violator, No New Sentence	601	607	6
020-2010	Conditional Release Violator, No New Sentence	20	18	(2)
020-5010	Return from Escape	-	-	-
020-6010	Non-violator Return, No New Sentence	1	-	(1)
040-1010	Par/CR/PRS/ Adm. Hold--Poss. Vio.	-	-	-
<b>Subtotal: Latest Adm. as Return by KDOC Action</b>		<b>622</b>	<b>625</b>	<b>3</b>
<b>Inter-jurisdictional Transfer:</b>				
010-4010	Interstate/Federal Compact Received	66	67	1
020-3010	Kansas Inmate Returned from Another Jurisdiction	5	5	-
<b>Subtotal: Latest Adm. as Inter-jurisdictional Transfer</b>		<b>71</b>	<b>72</b>	<b>1</b>
<b>Total: All Types of Admission</b>		<b>9,580</b>	<b>9,580</b>	<b>-</b>

\*The SAS end-of-month population figure sometimes varies slightly from the OMIS population report because the SAS file is generated at a different time of day than the OMIS population report. (In this case it differs by 0 for May and 1 for June).