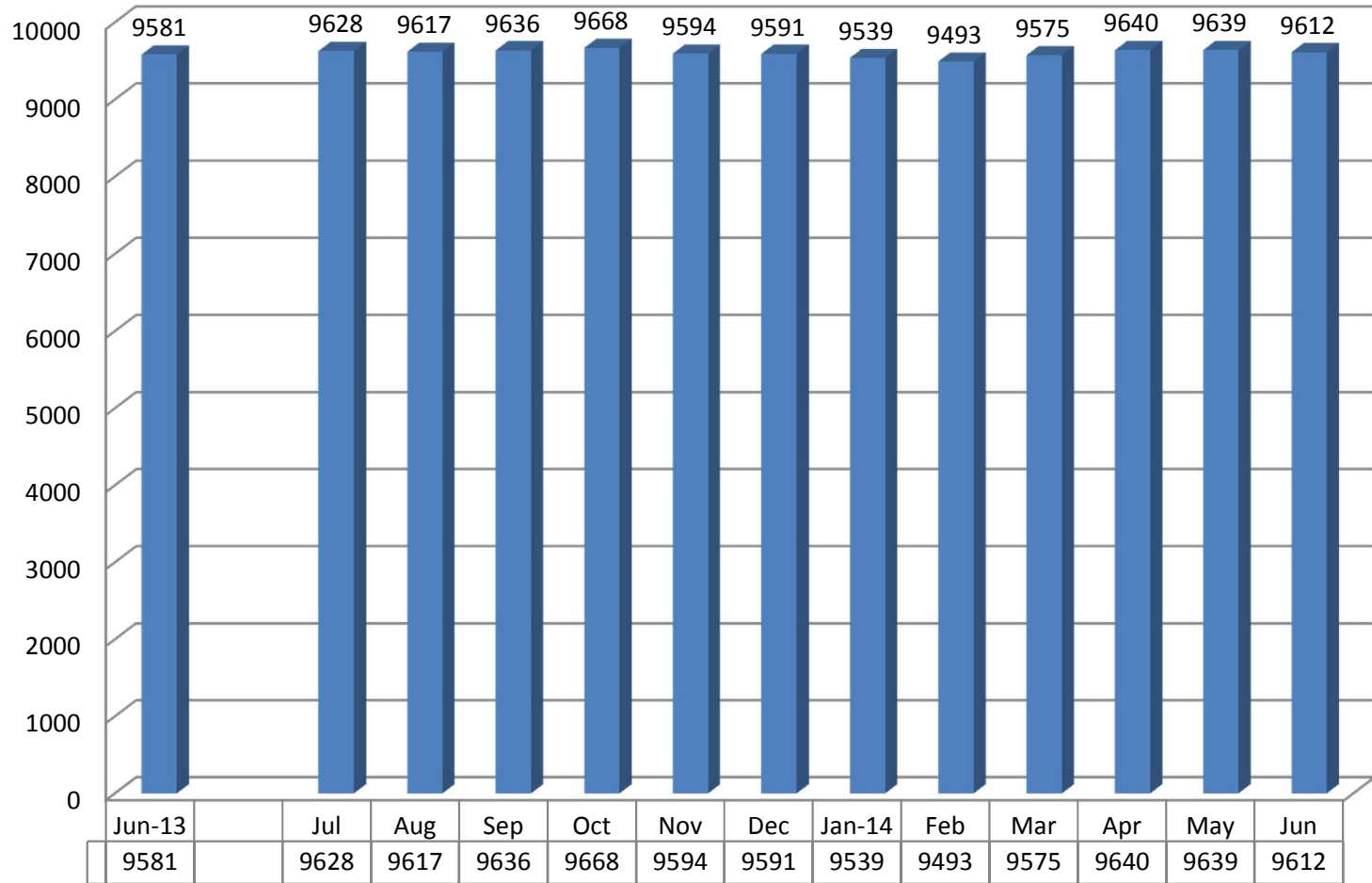


**Kansas Department of Corrections
Graphic Highlights -- Monthly Offender Population Report (June 2014)**

End-of-Month Inmate Population: FY 2014 To-Date

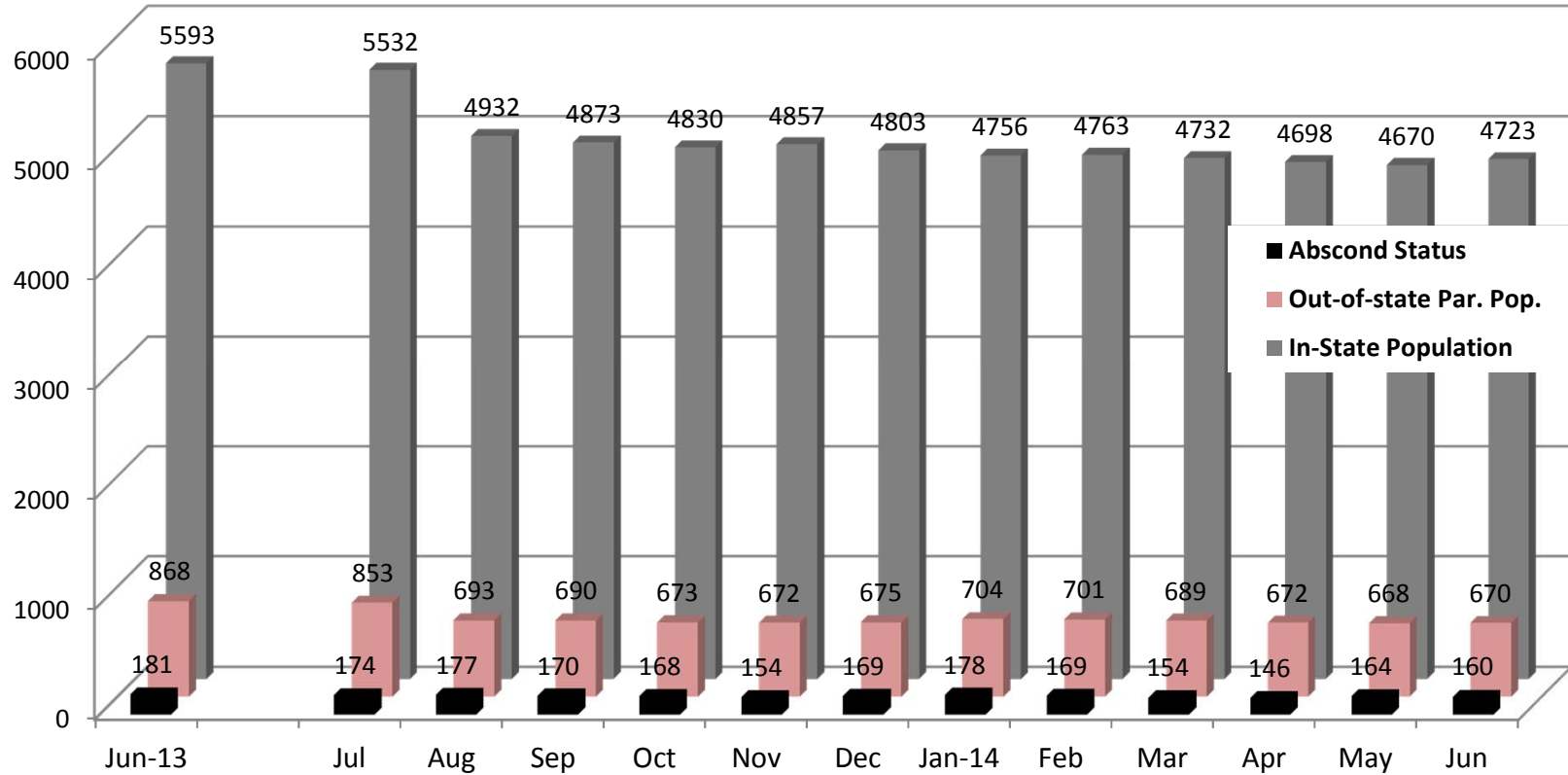


Change from Prev. Mo.		47	-11	19	32	-74	-3	-52	-46	82	65	-1	-27
Change from June, 2013		47	36	55	87	13	10	-42	-88	-6	59	58	31

**Figures reflect the total inmate population (combined DOC and Non-DOC facility populations)*

**Kansas Department of Corrections
Graphic Highlights -- Monthly Offender Population Report (June 2014)**

**Components of the End-of-Month Population Under Post-Incarceration Management:
FY2014**



In-State Population
(Change):

Change from Prev. Month	-61	-600	-59	-43	27	-54	-47	7	-31	-34	-28	53
Change from June, 2013	-61	-661	-720	-763	-736	-790	-837	-830	-861	-895	-923	-870

**In-state population is comprised of Kansas offenders supervised in Kansas and out-of-state offenders supervised in Kansas. Out-of-state population is comprised of Kansas offenders supervised out-of-state. Those on abscond status have active warrants (whereabouts unknown)*

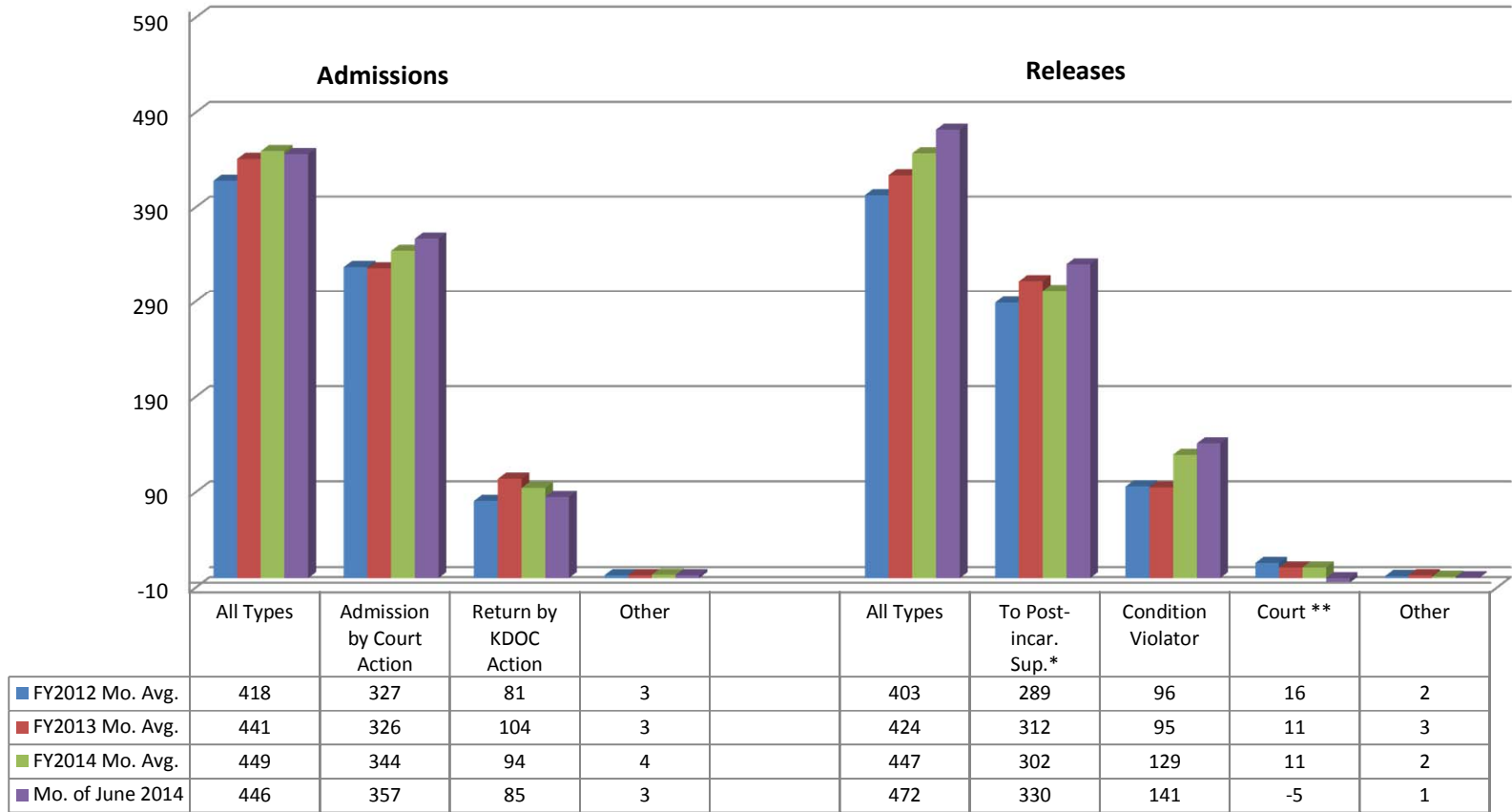
Note: The number of parole offenders drastically reduced in August due to the Justice Reinvestment Initiative which you may read more about at the following website:

<http://www.doc.ks.gov/victim-services/justice-reinvestment>

Kansas Department of Corrections

Graphic Highlights -- Monthly Offender Population Report (June 2014)

Number of Admission and Release Events Per Month (by Major Category): Comparison of FY2012, FY2013 & 2014 Monthly Averages with Current Month's Totals



* Includes releases to supervision via the provisions of the Kansas Sentencing Guidelines Act of 1993, as well as parole releases by action of the Kansas Prisoner Review Board.

**Figure can be a negative number for a particular month [since it is based on the total number whose last exit for the period (fiscal year to date) was via "out-to-court" minus the previous month's total, which can be a smaller or greater number].

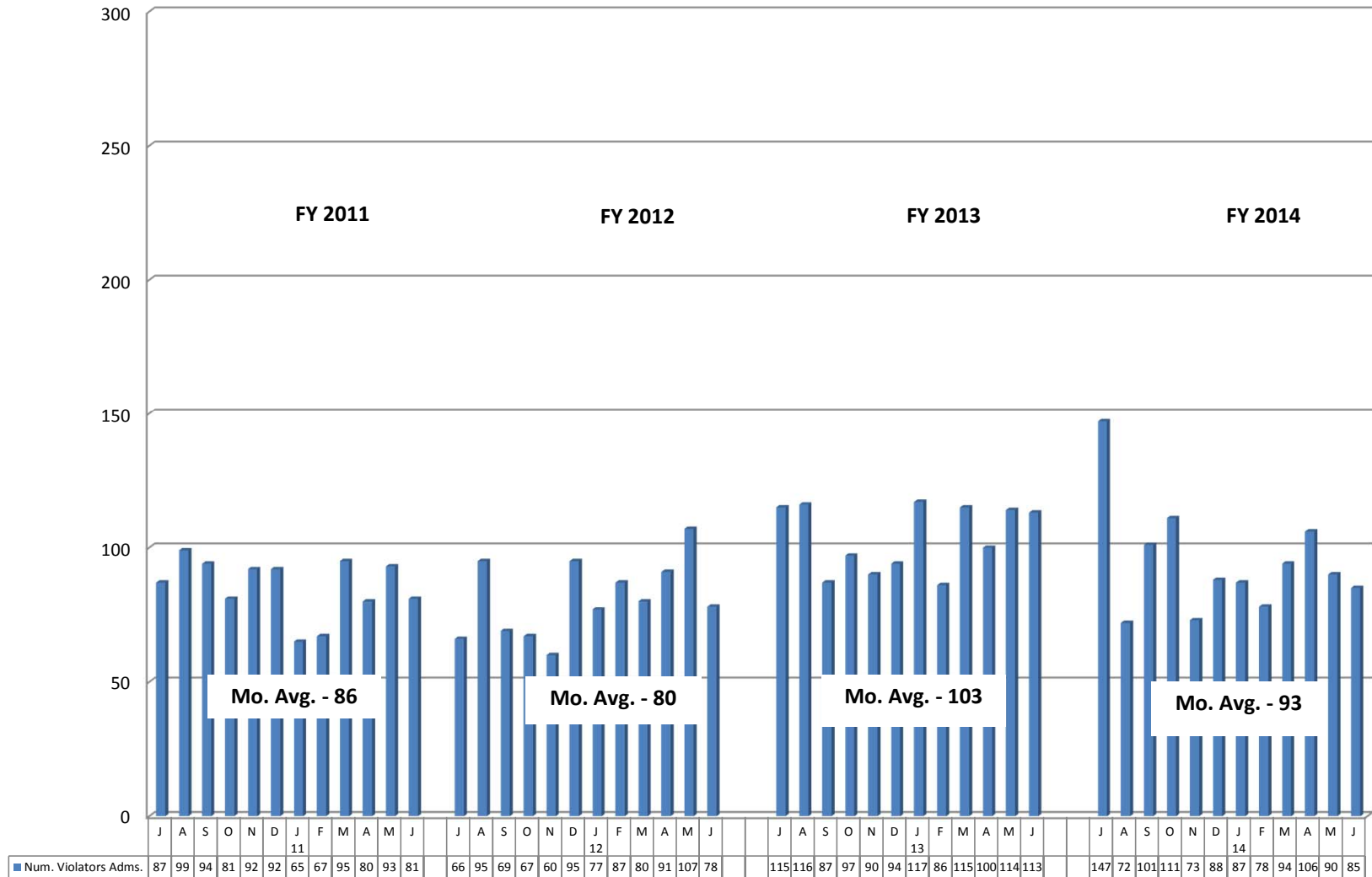
Note: Returned from court appearance is included in the All Types Admission total; returned from escape are included in the All Type Releases total but not its own personal category and Inter-Jurisdictional transfers are included in the All Types Releases total (included in chart).

Note: Number of escapees and Non-Violator Return - No New Sentence is not included in the Admissions

Kansas Department of Corrections

Graphic Highlights -- Monthly Offender Population Report (June 2014)

Number of Return Admissions for Condition Violations by Month: FY2011 - FY2014*



*Total number of admissions for violation of the conditions of release (no new sentence).

**The average number of escapees has been excluded in the average - which is 1 offender.

Kansas Department of Corrections
 End-of-Month Offender Population Report: June 2014 (Month 12, FY 2014)

Table 1
Number of Inmates Confined and Average Daily Population: FY 2013 and FY 2014

Correctional Facility	Number Confined			Average Daily Population***		
	5/31/2014	6/30/2014	Change	FY 2013	FY 2014	Change
KDOC Facilities						
Lansing: Total	2,410	2,390	-20	2,414	2,405	-9
Central	1,789	1,794	5	1,798	1,788	-10
East	621	596	-25	616	617	1
** South (Osawatomie)	-	-	0			0
Hutchinson: Total	1,858	1,865	7	1,867	1,838	-29
Central	1,081	1,093	12	1,090	1,068	-22
East	494	493	-1	493	489	-4
South	236	235	-1	237	235	-2
Work Release	47	44	-3	47	46	-1
El Dorado: Total	1,606	1,597	-9	1,425	1,576	151
Central (General Population)	982	978	-4	984	978	-6
Central - RDU	375	378	3	356	364	8
South-East	249	241	-8	85	234	149
Topeka: Total	739	728	-11	705	726	21
Central (General Population)	598	572	-26	644	628	-16
RDU	129	139	10	45	84	39
* Federal Inmates			0	1	-	-1
Work Release	12	17	5	15	14	-1
Norton: Total	811	832	21	828	833	5
Central	696	709	13	712	709	-3
** East (Stockton) re-opened 9-2010	115	123	8	116	124	8
Ellsworth	896	898	2	880	893	13
General Population	896	898	2	880	893	13
Work Release			0			0
Winfield: Total	775	760	-15	796	785	-11
Central	550	541	-9	546	546	0
Wichita Work Release	225	219	-6	250	239	-11
Larned CMHF (Total)	436	436	0	433	431	-2
Central	152	153	1	152	152	0
West	284	283	-1	281	279	-2
Work Release			0			0
Subtotal: KDOC Facilities	9,531	9,506	-25	9,348	9,487	139
Non-KDOC Facilities						
Larned State Hospital	103	104	1	106	105	-1
Contract Jail Placement [County]			0	49	-	-49
Contract Placement [Out-of-state]			0	-	-	0
** Labette CCC			0			0
Johnson County Res. Center (WR)	4	2	-2	4	6	2
Subtotal: Non-KDOC Facilities	107	106	-1	159	111	-48
Total: All Facilities/Placements	9,638	9,612	-26	9,507	9,598	91
Female Population (included in totals above)						
Topeka	727	728	1	706	726	20
Winfield (WWR)			0			0
Contract Jail (Jo. Co. Res. Center)	1	1	0	1	2	1
Larned State Hospital	10	10	0	13	11	-2
** Labette CCC			0			0
Subtotal: Females	738	739	1	720	739	19

* Federal inmates housed at TCF under contract between the Federal Bureau of Prisons and the Kansas Department of Corrections.

** Housing unit closed (or placement option removed) during FY 2009 because of budget constrictions. NCF-East (Stockton) re-opened 9-2010.

*** Average Daily Population (ADP) columns: Because of rounding, the sum of the units might not equal the total for the facility. And, the sum of the facilities might not equal the grand total.

Kansas Department of Corrections
End-of-Month Offender Population Report: June 2014 (Month 12, FY 2014)

Table 2
Total Admission and Release Events: FY 2012, FY 2013, and FY 2014

<u>Type of Admission</u>	Total Admissions			Avg. Number Per Month		
	FY 2012	FY 2013	FY 2014	FY 2012	FY 2013	FY 2014
Admissions by Court Action:						
New Court Commitment	1,904	1,856	1,810	158.7	154.7	150.8
*Sanction from Probation (CC)	-	-	323	0.0	0.0	26.9
Probation Violator, No New Sentence	1,664	1,620	1,368	138.7	135.0	114.0
Probation Violator, New Sentence	179	198	257	14.9	16.5	21.4
Probation Violator, New Conviction	-	-	134			11.2
Parole Violator, New Sentence	141	177	180	11.8	14.8	15.0
Parole to Detainer, New Sentence	18	33	32	1.5	2.8	2.7
Non Violator Return, New Sentence	29	28	20	2.4	2.3	1.7
Parole Violator, Pending New Sentence	-	-	6	0.0	0.0	0.5
Subtotal: Court Commitments	3,935	3,912	4,130	327.9	326.0	344.2
Return from Court Appearance	75	97	89	6.3	8.1	7.4
Subtotal: Admission by Court Action	4,010	4,009	4,219	334.2	334.1	351.6
Return by KDOC Action:						
Parole Violator, No New Sentence	950	1,231	1,117	79.2	102.6	93.1
Return from Escape	17	15	15	1.4	1.3	1.3
Par/CR/PRS/ Adm. Hold--Poss. Vio.	-	-	-	0.0	0.0	0.0
Subtotal: Return by KDOC Action	967	1,246	1,132	80.6	103.8	94.3
Inter-jurisdictional Transfer:						
Interstate/Federal Compact Received	10	9	16	0.8	0.8	1.3
Kansas Inmate Returned from Another Jurisdiction	26	25	26	2.2	2.1	2.2
Subtotal: Inter-jurisdictional Transfer	36	34	42	3.0	2.8	3.5
Total: All Types of Admission	5,013	5,289	5,393	417.8	440.8	449.4

Note: Totals may be slightly off when comparing to page 3 due to rounding.

Source: KDOC computerized report PGM-ISR0445.

*Sanctions 120 days or less is 197 offenders; Sanctions 180 days or greater is 126 offenders

Kansas Department of Corrections
End-of-Month Offender Population Report: June 2014 (Month 12, FY 2014)

Table 2 (continued)
Total Admission and Release Events: FY 2012, FY 2013, and FY 2014

<u>Type of Release</u>	Total Releases			Avg. Number Per Month		
	FY 2012	FY 2013	FY 2014	FY 2012	FY 2013	FY 2014
Release to Post-incarceration Supervision**	3,467	3,741	3,619	288.9	311.8	301.6
Conditional Release	2	-	-	0.2	0.0	0.0
Expiration of Sentence	1,155	1,140	1,552	96.3	95.0	129.3
Commutation or Pardon	-	-	-	0.0	0.0	0.0
Inter-jurisdictional Transfer:						
Kansas Inmate Released for Housing	15	12	19	1.3	1.0	1.6
Interstate/Fed. Inmate Released to Sending Juris.	10	14	10	0.8	1.2	0.8
Subtotal: Inter-jurisdictional Transfer	25	26	29	2.1	2.2	2.4
Court-ordered Release:						
Probation	4	5	5	0.3	0.4	0.4
Returned Parolee Placed on Probation	-	-	-	0.0	0.0	0.0
Released on Appeal Bond	3	2	4	0.3	0.2	0.3
Released for Court Appearance	132	111	107	11.0	9.3	8.9
Other Final Release by Court Order	8	20	18	0.7	1.7	1.5
Subtotal: Court-ordered Release	147	138	134	12.3	11.5	11.2
Escape	21	13	13	1.8	1.1	1.1
Death (All Causes)	22	30	19	1.8	2.5	1.6
Total: All Types of Release	4,839	5,088	5,366	403.3	424.0	447.2

* Certain types of transactions involving known temporary exits from a correctional facility have been excluded from the body of the table (release to court/return from court--1187 in FY2012, 1168 in FY2013 and 1211 in FY2014).

** Includes releases to post-incarceration supervision via the provisions of the Kansas Sentencing Guidelines Act of July 1993, as well as parole releases by action of the Kansas Prisoner Review Board.

Note: Totals may be slightly off due to rounding when comparing to page 3

Kansas Department of Corrections
 End-of-Month Offender Population Report: June 2014 (Month 12, FY 2014)
Table 3
Distribution of Inmate Population by Type of Latest Admission:
Comparison of May 31st and June 30th, 2014

Note. The information presented here pertains to the inmate population, on the specified dates and not to admissions during the period.

Type of Admission [Latest Admission Per Master Record]		*Number of Inmates		
Admission Code [OMIS]	Admission Description	5/31/2014	6/30/2014	Difference May minus Jun
Admission by Court Action:				
010-1010	New Court Commitment	6,261	6,288	27
010-1022	Sanction from Probation	79	51	(28)
010-2010	Probation Violator, No New Sentence	1,371	1,353	(18)
010-2020	Probation Violator, New Sentence	424	427	3
010-2022	Probation Violator, New Conviction	81	93	12
020-1020 & 020-1025	Parole Violator, New Sentence	731	734	3
020-1022	Parole Violator, Pending New Sentence	3	2	(1)
020-2020	Conditional Release Violator, New Sentence	31	31	-
020-6020	Non-violator Return, New Sentence	31	29	(2)
Subtotal: Latest Adm. as Court Commitment		9,012	9,008	(4)
Return by KDOC Action:				
020-1010	Parole Violator, No New Sentence	527	507	(20)
020-2010	Conditional Release Violator, No New Sentence	20	19	(1)
020-5010	Return from Escape	-	-	-
020-6010	Non-violator Return, No New Sentence	2	2	-
040-1010	Par/CR/PRS/ Adm. Hold--Poss. Vio.	-	-	-
Subtotal: Latest Adm. as Return by KDOC Action		549	528	(21)
Inter-jurisdictional Transfer:				
010-4010	Interstate/Federal Compact Received	75	73	(2)
020-3010	Kansas Inmate Returned from Another Jurisdiction	2	2	-
Subtotal: Latest Adm. as Inter-jurisdictional Transfer		77	75	(2)
Total: All Types of Admission		9,638	9,611	(27)

*The SAS end-of-month population figure sometimes varies slightly from the OMIS population report because the SAS file is generated at a different time of day than the OMIS population report. It varied by 1 for May and 1 for June.