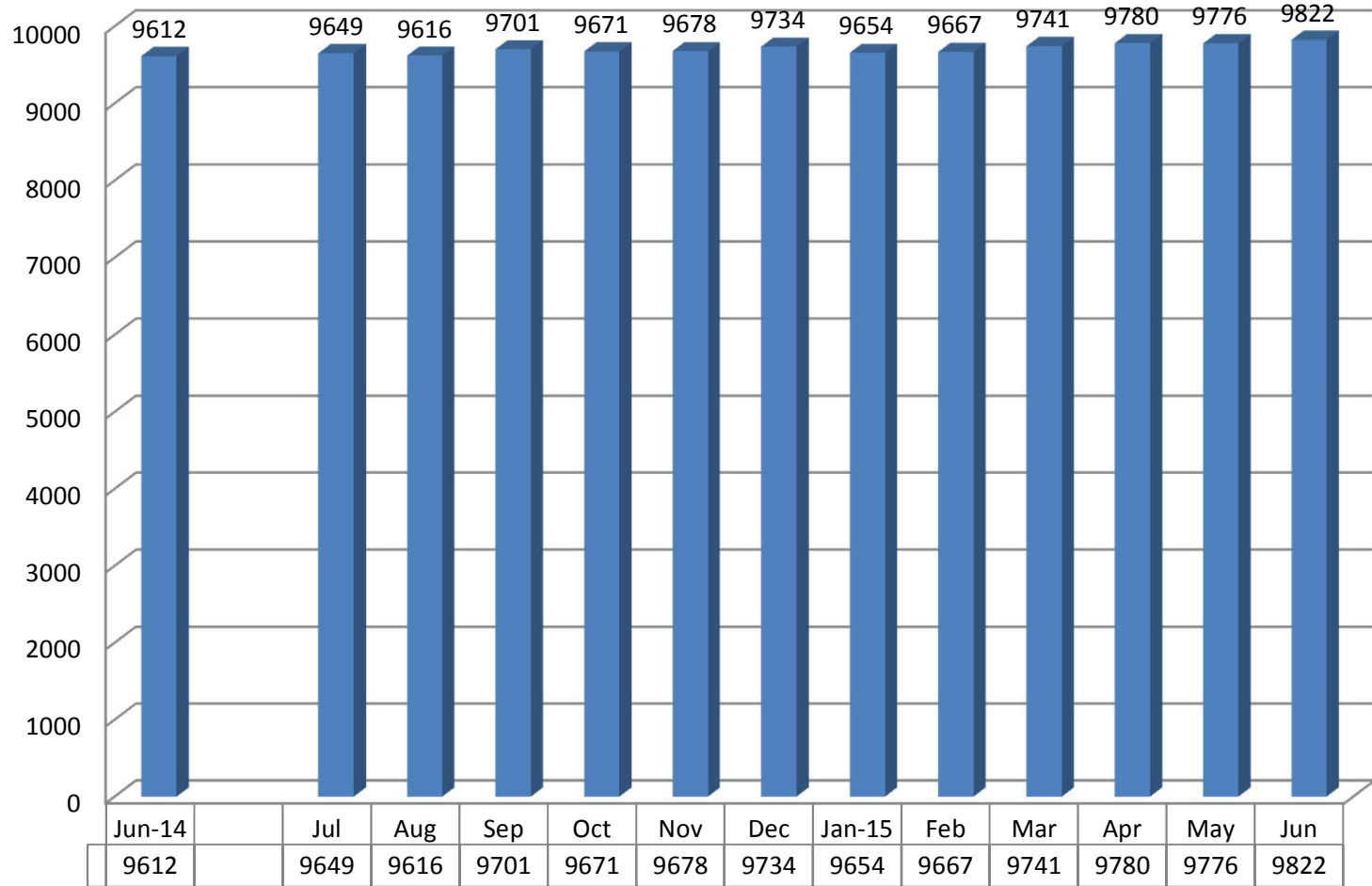


**Kansas Department of Corrections
Graphic Highlights -- Monthly Offender Population Report (June 2015)**

End-of-Month Inmate Population: FY 2015 To-Date

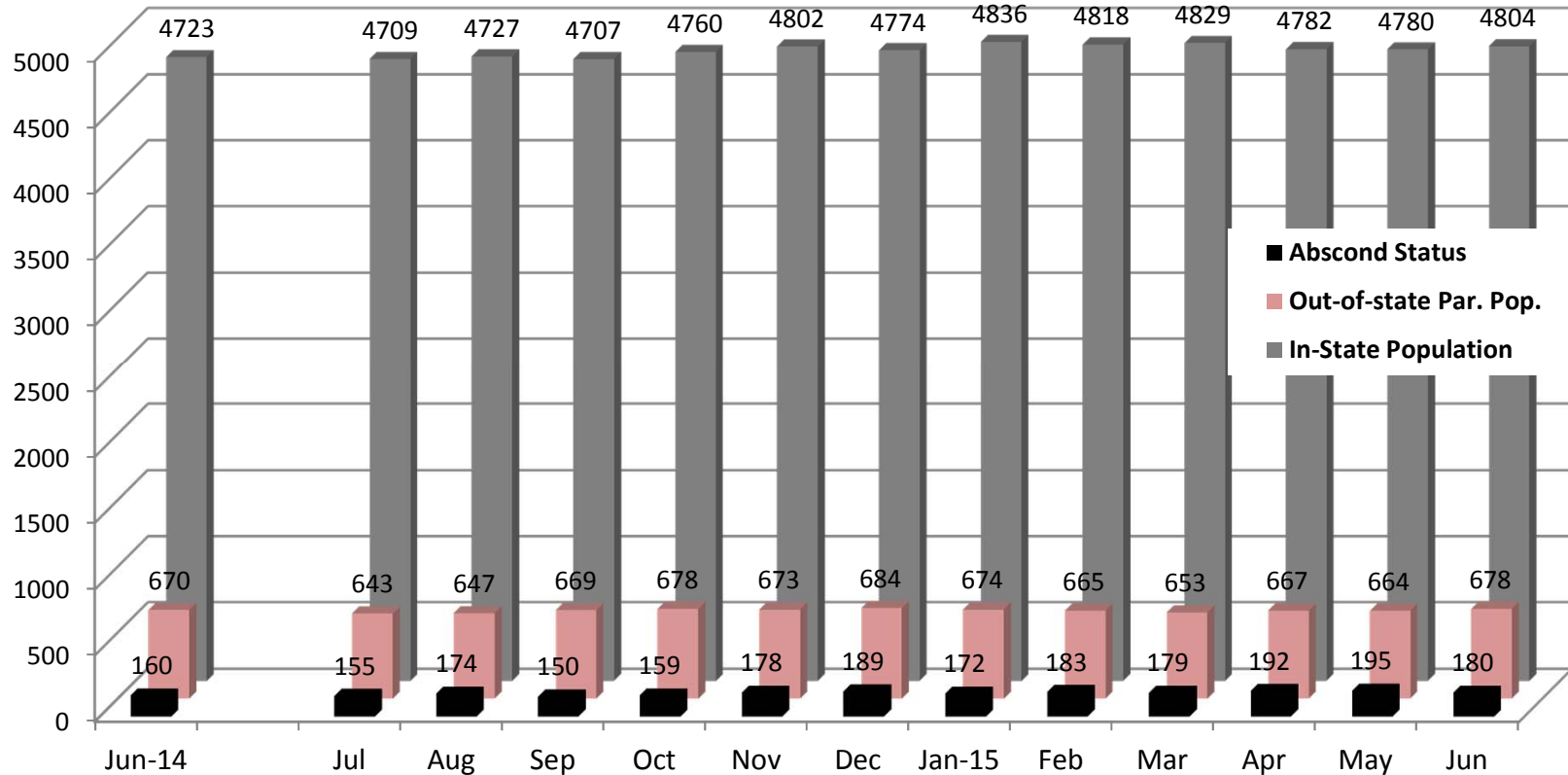


Change from Prev. Mo		37	-33	85	-30	7	56	-80	13	74	39	-4	46
Change from June, 2014	9612	37	4	89	59	66	122	42	55	129	168	164	210

**Figures reflect the total inmate population (combined DOC and Non-DOC facility populations)*

**Kansas Department of Corrections
Graphic Highlights -- Monthly Offender Population Report (June 2015)**

**Components of the End-of-Month Population Under Post-Incarceration Management:
FY2015**



In-State Population
(Change):

Change from Prev. Month	-14	18	20	53	42	-28	62	-18	11	-47	-2	24
Change from June, 2014	-14	4	-16	37	79	51	113	95	106	59	57	81

**In-state population is comprised of Kansas offenders supervised in Kansas and out-of-state offenders supervised in Kansas. Out-of-state population is comprised of Kansas offenders supervised out-of-state. Those on abscond status have active warrants (whereabouts unknown)*

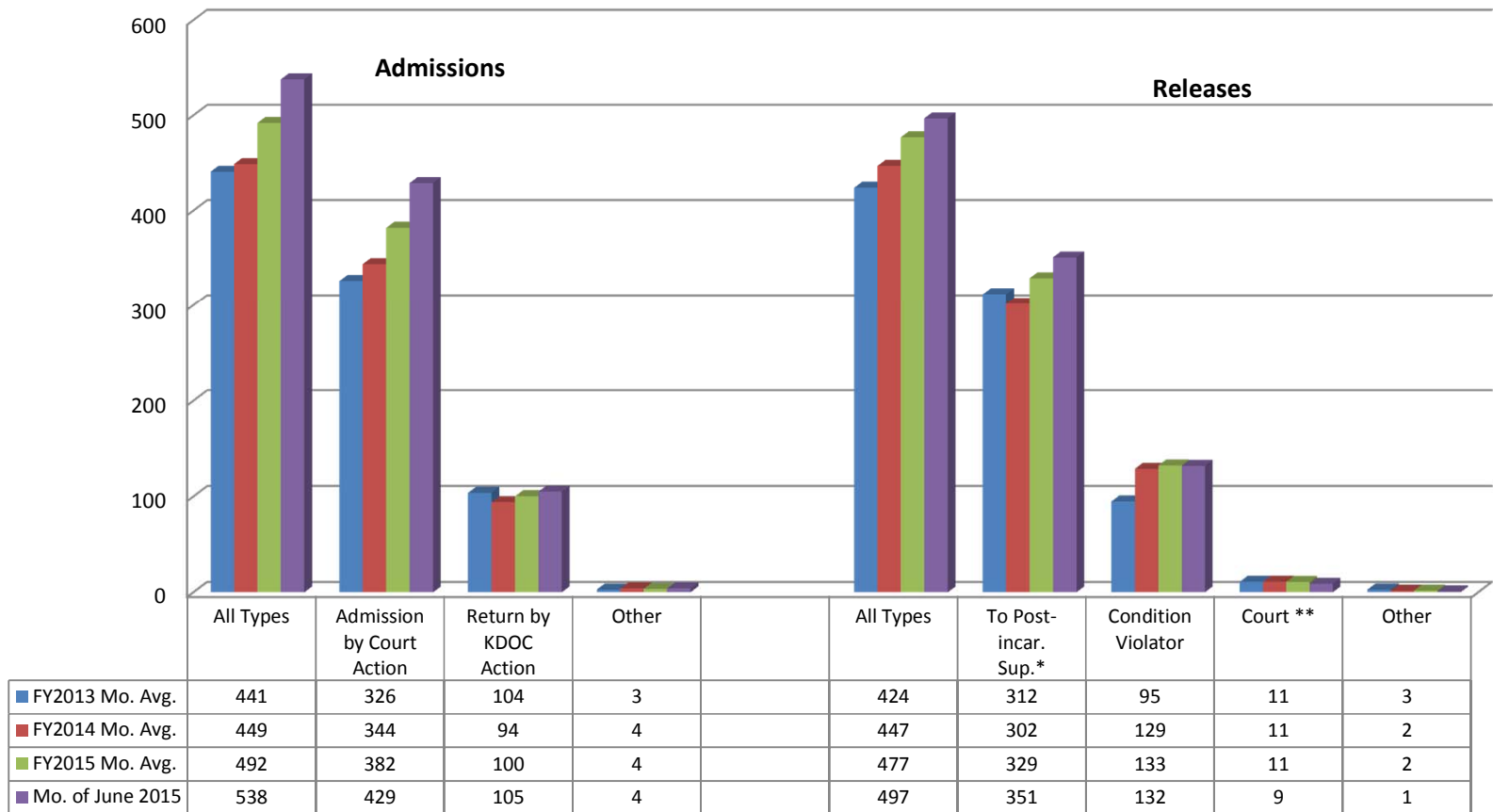
Note: The number of parole offenders drastically reduced in August due to the Justice Reinvestment Initiative which you may read more about at the following website:

<http://www.doc.ks.gov/victim-services/justice-reinvestment>

Kansas Department of Corrections

Graphic Highlights -- Monthly Offender Population Report (June 2015)

Number of Admission and Release Events Per Month (by Major Category): Comparison of FY2013, FY2014 & FY 2015 Monthly Averages with Current Month's Totals



* Includes releases to supervision via the provisions of the Kansas Sentencing Guidelines Act of 1993, as well as parole releases by action of the Kansas Prisoner Review Board.

**Figure can be a negative number for a particular month [since it is based on the total number whose last exit for the period (fiscal year to date) was via "out-to-court" minus the previous month's total, which can be a smaller or greater number].

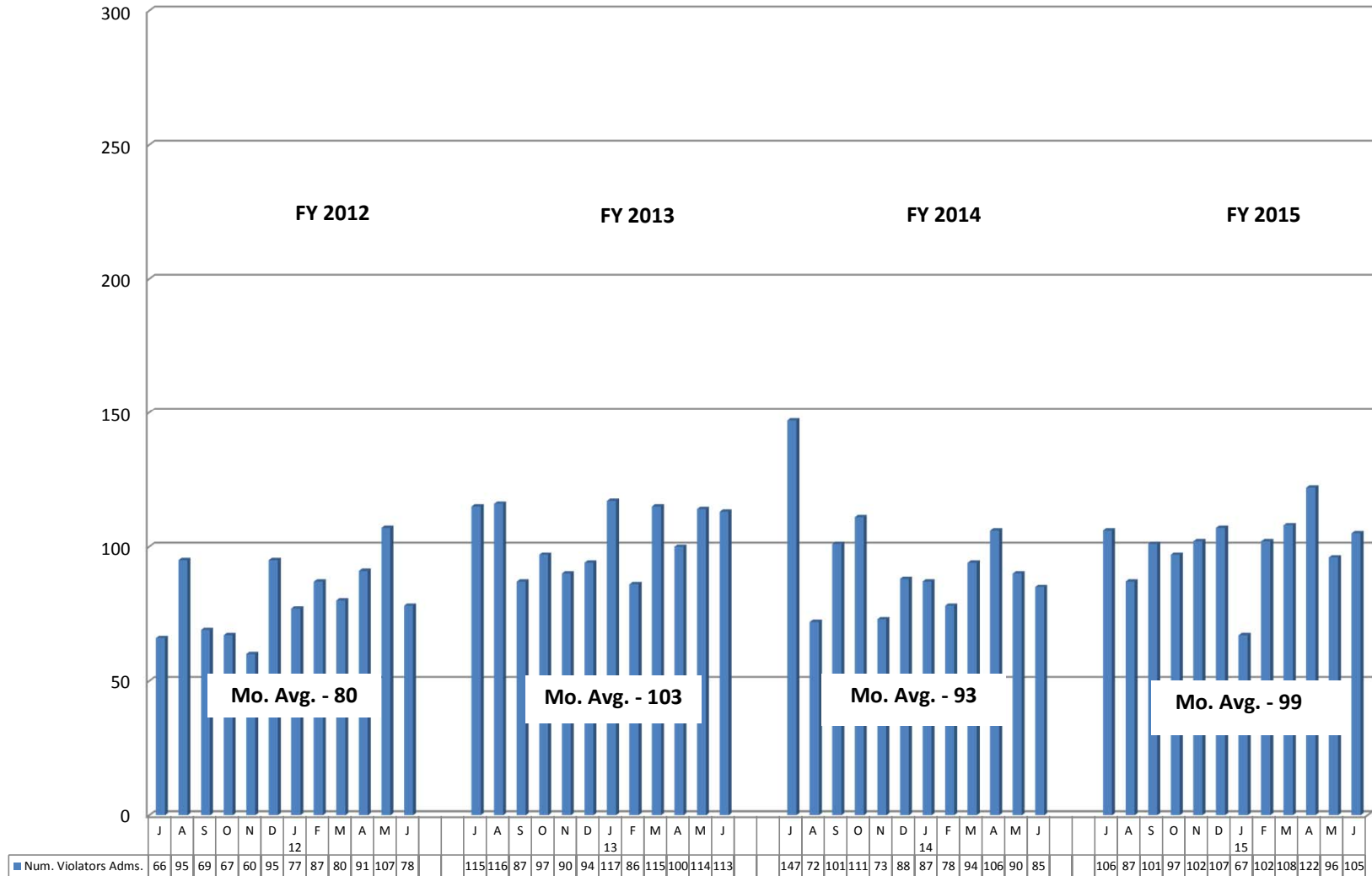
Note: Returned from court appearance is included in the All Types Admission total; returned from escape are included in the All Type Releases total but not its own personal category and Inter-Jurisdictional transfers are included in the All Types Releases total (included in chart).

Note: Number of escapees and Non-Violator Return - No New Sentence is not included in the Admissions

Kansas Department of Corrections

Graphic Highlights -- Monthly Offender Population Report (June 2015)

Number of Return Admissions for Condition Violations by Month: FY2012 - FY2015*



*Total number of admissions for violation of the conditions of release (no new sentence).

**The average number of escapees returned has been excluded in the average - which is 1 offender.

Kansas Department of Corrections
End-of-Month Offender Population Report: June 2015 (Month 12, FY 2015)

Table 1
Number of Inmates Confined and Average Daily Population: FY 2014 and FY 2015

Correctional Facility	Number Confined			Average Daily Population***		
	5/31/2015	6/30/2015	Change	FY 2014	FY 2015	Change
KDOC Facilities						
Lansing: Total	2,402	2,422	20	2,405	2,408	3
Central	1,789	1,817	28	1,788	1,794	6
East	613	605	-8	617	614	-3
** South (Osawatomie)			0			0
Hutchinson: Total	1,825	1,845	20	1,838	1,828	-10
Central	1,053	1,075	22	1,068	1,063	-5
East	491	492	1	489	489	0
South	237	233	-4	235	233	-2
Work Release	44	45	1	46	43	-3
El Dorado: Total	1,571	1,572	1	1,576	1,595	19
Central (General Population)	951	943	-8	978	963	-15
Central - RDU	371	382	11	364	380	16
South-East	249	247	-2	234	253	19
Topeka: Total	819	825	6	726	776	50
Central (General Population)	650	623	-27	628	635	7
RDU	151	183	32	84	127	43
* Federal Inmates			0	-		0
Work Release	18	19	1	14	14	0
Norton: Total	830	839	9	833	825	-8
Central	714	712	-2	709	705	-4
** East (Stockton) re-opened 9-2010	116	127	11	124	120	-4
Ellsworth	891	894	3	893	895	2
General Population	891	894	3	893	895	2
Work Release			0			0
Winfield: Total	803	800	-3	785	779	-6
Central	552	552	0	546	542	-4
Wichita Work Release	251	248	-3	239	237	-2
Larned CMHF (Total)	435	424	-11	431	428	-3
Central	150	141	-9	152	150	-2
West	285	283	-2	279	278	-1
Work Release			0			0
Subtotal: KDOC Facilities	9,576	9,621	45	9,487	9,533	46
Non-KDOC Facilities						
Larned State Hospital	103	102	-1	105	104	-1
Contract Jail Placement [County]	95	95	0	-	58	58
Contract Placement [Out-of-state]			0	-		0
** Labette CCC			0			0
Johnson County Res. Center (WR)	2	4	2	6	2	-4
Subtotal: Non-KDOC Facilities	200	201	1	111	164	53
Total: All Facilities/Placements	9,776	9,822	46	9,598	9,697	99
Female Population (included in totals above)						
Topeka	819	833	14	726	776	50
Winfield (WWR)			0			0
Contract Jail (Jo. Co. Res. Center)			0	2		-2
Larned State Hospital	10	8	-2	11	10	-1
** Labette CCC			0			0
Subtotal: Females	829	833	4	739	786	47

* Federal inmates housed at TCF under contract between the Federal Bureau of Prisons and the Kansas Department of Corrections.

** Housing unit closed (or placement option removed) during FY 2009 because of budget restrictions. NCF-East (Stockton) re-opened 9-2010.

*** Average Daily Population (ADP) columns: Because of rounding, the sum of the units might not equal the total for the facility. And, the sum of the facilities might not equal the grand total.

Kansas Department of Corrections
End-of-Month Offender Population Report: June 2015 (Month 12, FY 2015)

Table 2
Total Admission and Release Events: FY 2013, FY 2014, and FY 2015

<u>Type of Admission</u>	Total Admissions			Avg. Number Per Month		
	FY 2013	FY 2014	FY 2015	FY 2013	FY 2014	FY 2015
Admissions by Court Action:						
New Court Commitment	1,856	1,810	1,862	154.7	150.8	155.2
*Sanction from Probation (CC)	-	323	692	0.0	26.9	57.7
Probation Violator, No New Sentence	1,620	1,368	1,319	135.0	114.0	109.9
Probation Violator, New Sentence	198	257	331	16.5	21.4	27.6
Probation Violator, New Conviction	-	134	168	-	11.2	14.0
Parole Violator, New Sentence	177	180	144	14.8	15.0	12.0
Parole to Detainer, New Sentence	33	32	26	2.8	2.7	2.2
Non Violator Return, New Sentence	28	20	7	2.3	1.7	0.6
Parole Violator, Pending New Sentence	-	6	35	0.0	0.5	2.9
Subtotal: Court Commitments	3,912	4,130	4,584	326.0	344.2	382.0
Return from Court Appearance	97	89	79	8.1	7.4	6.6
Subtotal: Admission by Court Action	4,009	4,219	4,663	334.1	351.6	388.6
Return by KDOC Action:						
Parole Violator, No New Sentence	1,231	1,117	1,214	102.6	93.1	101.2
Cond Rel Viol No New Sentence	-	-	5	-	-	0.4
Non Violator Return No New Sentence	-	-	3	-	-	0.3
Return from Escape	15	15	8	1.3	1.3	0.7
Par/CR/PRS/ Adm. Hold--Poss. Vio.	-	-	-	0.0	0.0	0.0
Subtotal: Return by KDOC Action	1,246	1,132	1,230	103.8	94.3	102.5
Inter-jurisdictional Transfer:						
Interstate/Federal Compact Received	9	16	8	0.8	1.3	0.7
Kansas Inmate Returned from Another Jurisdiction	25	26	37	2.1	2.2	3.1
Subtotal: Inter-jurisdictional Transfer	34	42	45	2.8	3.5	3.8
Total: All Types of Admission	5,289	5,393	5,938	440.8	449.4	494.8

Note: Totals may be slightly off when comparing to page 3 due to rounding.

Source: KDOC computerized report PGM-ISR0445.

*Sanctions 120 days or less is 416 offenders; Sanctions 180 days or greater is 276 offenders

Kansas Department of Corrections
End-of-Month Offender Population Report: June 2015 (Month 12, FY 2015)

Table 2 (continued)
Total Admission and Release Events: FY 2013, FY 2014, and FY 2015

<u>Type of Release</u>	Total Releases			Avg. Number Per Month		
	FY 2013	FY 2014	FY 2015	FY 2013	FY 2014	FY 2015
Release to Post-incarceration Supervision**	3,741	3,619	3,948	311.8	301.6	329.0
Conditional Release	-	-	-	0.0	0.0	0.0
Expiration of Sentence	1,140	1,552	1,590	95.0	129.3	132.5
Commutation or Pardon	-	-	-	0.0	0.0	0.0
Inter-jurisdictional Transfer:						
Kansas Inmate Released for Housing	12	19	16	1.0	1.6	1.3
Interstate/Fed. Inmate Released to Sending Juris.	14	10	13	1.2	0.8	1.1
Subtotal: Inter-jurisdictional Transfer	26	29	29	2.2	2.4	2.4
Court-ordered Release:						
Probation	5	5	6	0.4	0.4	0.5
Returned Parolee Placed on Probation	-	-	-	0.0	0.0	0.0
Released on Appeal Bond	2	4	3	0.2	0.3	0.3
Released for Court Appearance	111	107	113	9.3	8.9	9.4
Other Final Release by Court Order	20	18	9	1.7	1.5	0.8
Subtotal: Court-ordered Release	138	134	131	11.5	11.2	10.9
Escape	13	13	5	1.1	1.1	0.4
Death (All Causes)	30	19	23	2.5	1.6	1.9
Total: All Types of Release	5,088	5,366	5,726	424.0	447.2	477.2

* Certain types of transactions involving known temporary exits from a correctional facility have been excluded from the body of the table (release to court/return from court--1168 in FY2013, 1211 in FY2014 and 1513 in FY2015).

** Includes releases to post-incarceration supervision via the provisions of the Kansas Sentencing Guidelines Act of July 1993, as well as parole releases by action of the Kansas Prisoner Review Board.

Note: Totals may be slightly off due to rounding when comparing to page 3

Kansas Department of Corrections
 End-of-Month Offender Population Report: June 2015 (Month 12, FY 2015)
Table 3
Distribution of Inmate Population by Type of Latest Admission:
Comparison of May 31st, 2015 and June 30th, 2015

Note. The information presented here pertains to the inmate population, on the specified dates and not to admissions during the period.

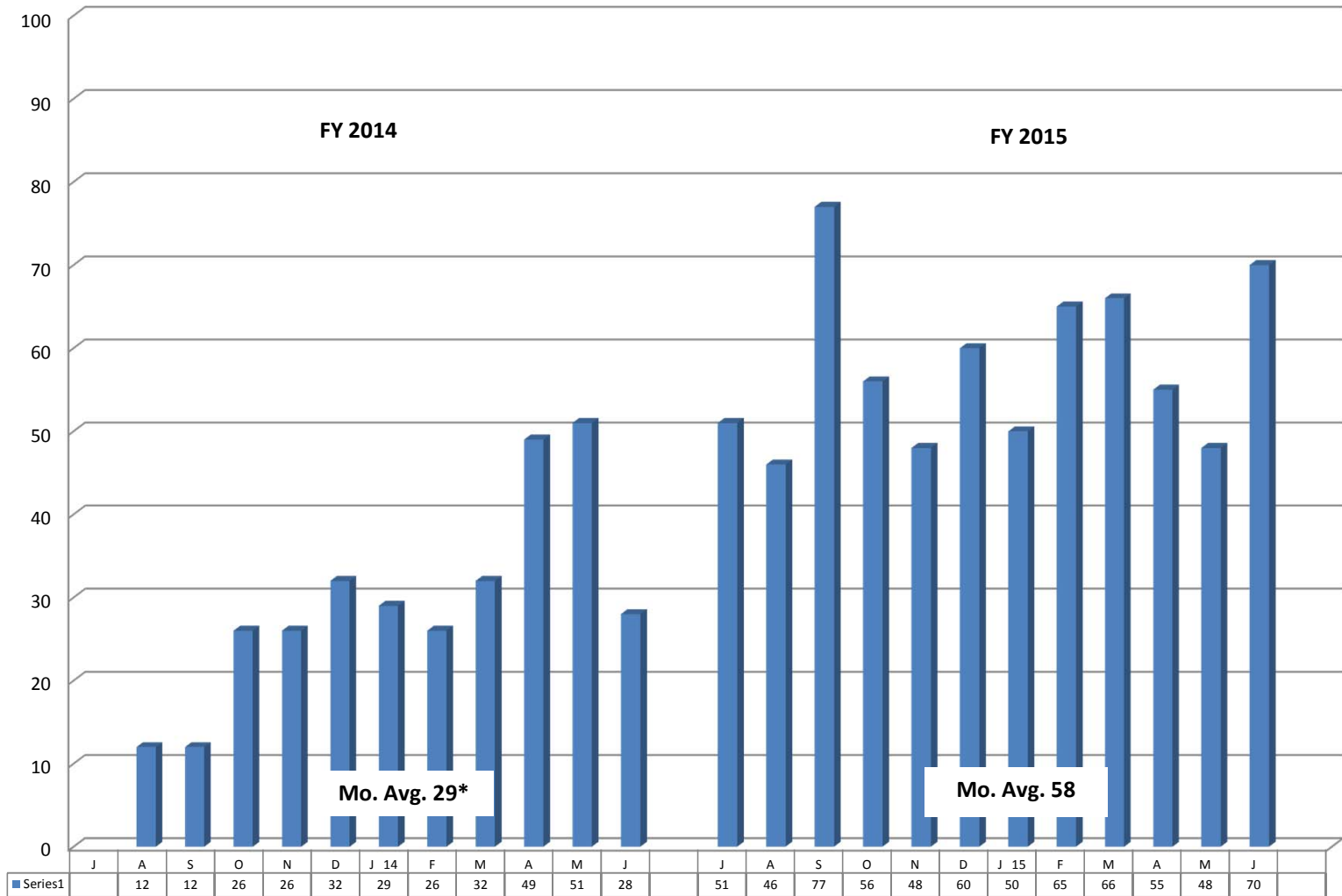
Type of Admission [Latest Admission Per Master Record]		*Number of Inmates		
Admission Code [OMIS]	Admission Description	5/31/2015	6/30/2015	Difference May minus June
Admission by Court Action:				
010-1010	New Court Commitment	6,269	6,301	32
010-1022	Sanction from Probation	118	118	-
010-2010	Probation Violator, No New Sentence	1,250	1,250	-
010-2020	Probation Violator, New Sentence	582	587	5
010-2022	Probation Violator, New Conviction	119	127	8
020-1020 & 020-1025	Parole Violator, New Sentence	681	678	(3)
020-1022	Parole Violator, Pending New Sentence	4	3	(1)
020-2020	Conditional Release Violator, New Sentence	30	29	(1)
020-6020	Non-violator Return, New Sentence	35	36	1
Subtotal: Latest Adm. as Court Commitment		9,088	9,129	41
Return by KDOC Action:				
020-1010	Parole Violator, No New Sentence	595	601	6
020-2010	Conditional Release Violator, No New Sentence	19	20	1
020-5010	Return from Escape			-
020-6010	Non-violator Return, No New Sentence	3	2	(1)
050-1010	Par/CR/PRS/ Adm. Hold--Poss. Vio.	2	1	(1)
Subtotal: Latest Adm. as Return by KDOC Action		619	624	5
Inter-jurisdictional Transfer:				
010-4010	Interstate/Federal Compact Received	67	67	-
020-3010	Kansas Inmate Returned from Another Jurisdiction	2	2	-
Subtotal: Latest Adm. as Inter-jurisdictional Transfer		69	69	-
Total: All Types of Admission		9,776	9,822	46

*The SAS end-of-month population figure sometimes varies slightly from the OMIS population report because the SAS file is generated at a different time of day than the OMIS population report. It varied by for 0 May and by 0 for June.

Kansas Department of Corrections

Graphic Highlights -- Monthly Offender Population Report (June 2015)

Number of Admissions for Probation Sanctions by Month: FY2014 - FY2015



* Average for FY14 is calculated based on the number of months whose data were available. Data were not available for July 2013, therefore it was not included in the average calculation.