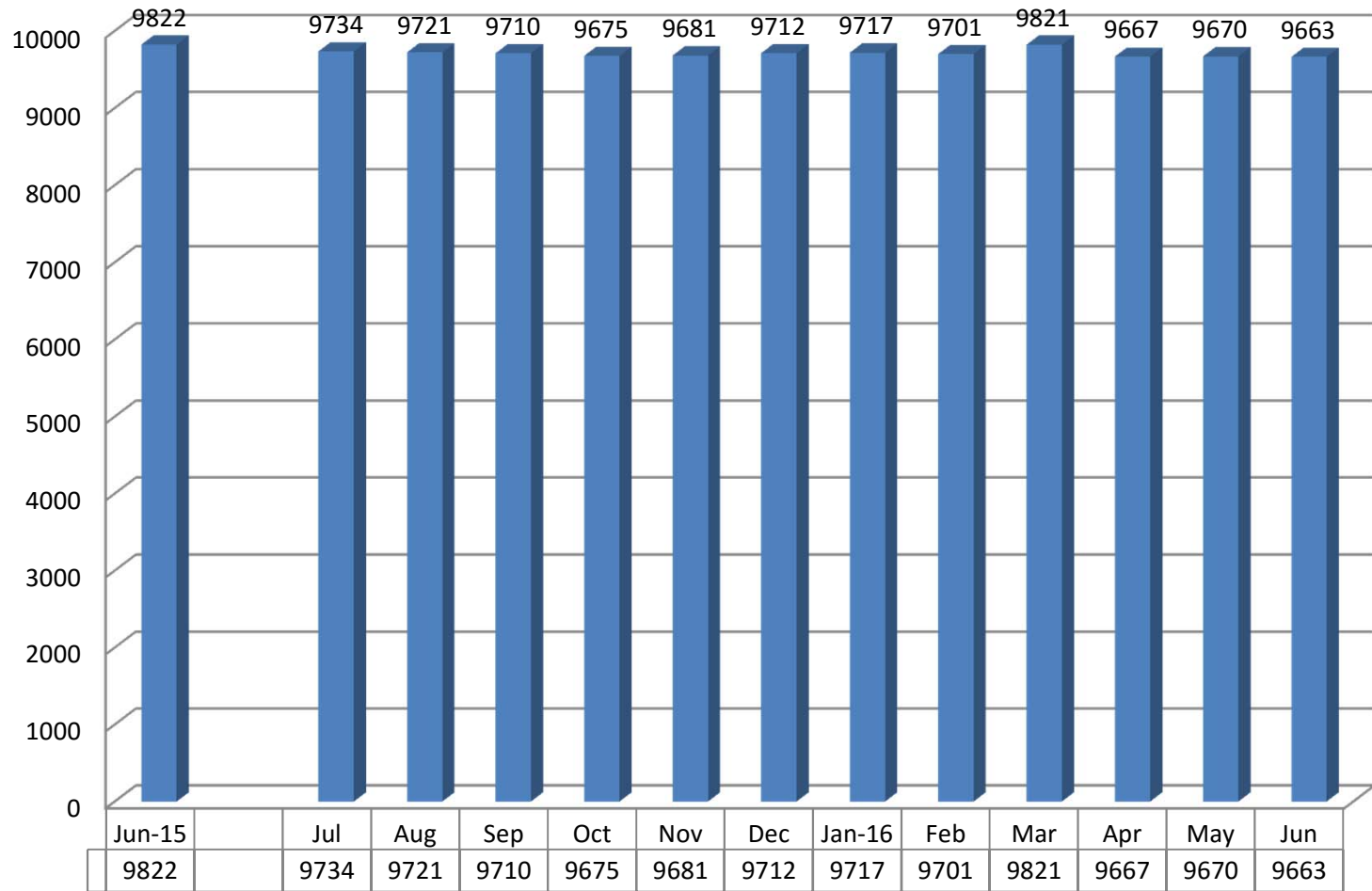


**Kansas Department of Corrections
Graphic Highlights -- Monthly Offender Population Report (June 2016)**

End-of-Month Inmate Population: FY 2016 To-Date



Change from Prev. Mo

-88 -13 -11 -35 6 31 5 -16 120 -154 3 -7

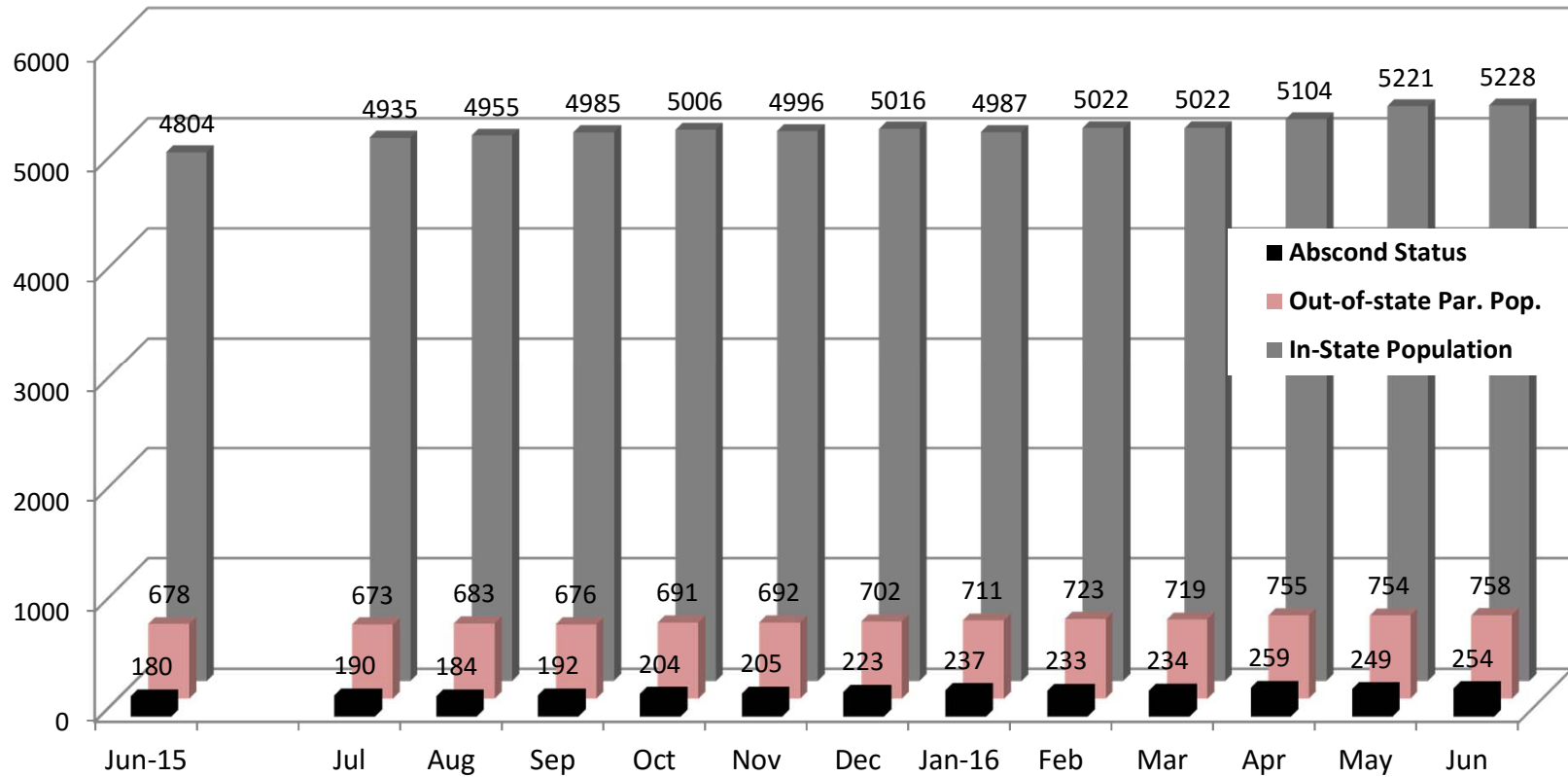
Change from June, 2015

-88 -101 -112 -147 -141 -110 -105 -121 -1 -155 -152 -159

**Figures reflect the total inmate population (combined DOC and Non-DOC facility populations)*

**Kansas Department of Corrections
Graphic Highlights -- Monthly Offender Population Report (June 2016)**

**Components of the End-of-Month Population Under Post-Incarceration Management:
FY2016**



In-State Population
(Change):

Change from Prev. Month	131	20	30	21	-10	20	-29	35	0	82	117	7
Change from June, 2015	131	151	181	202	192	212	183	218	218	300	417	424

**In-state population is comprised of Kansas offenders supervised in Kansas and out-of-state offenders supervised in Kansas. Out-of-state population is comprised of Kansas offenders supervised out-of-state. Those on abscond status have active warrants (whereabouts unknown)*

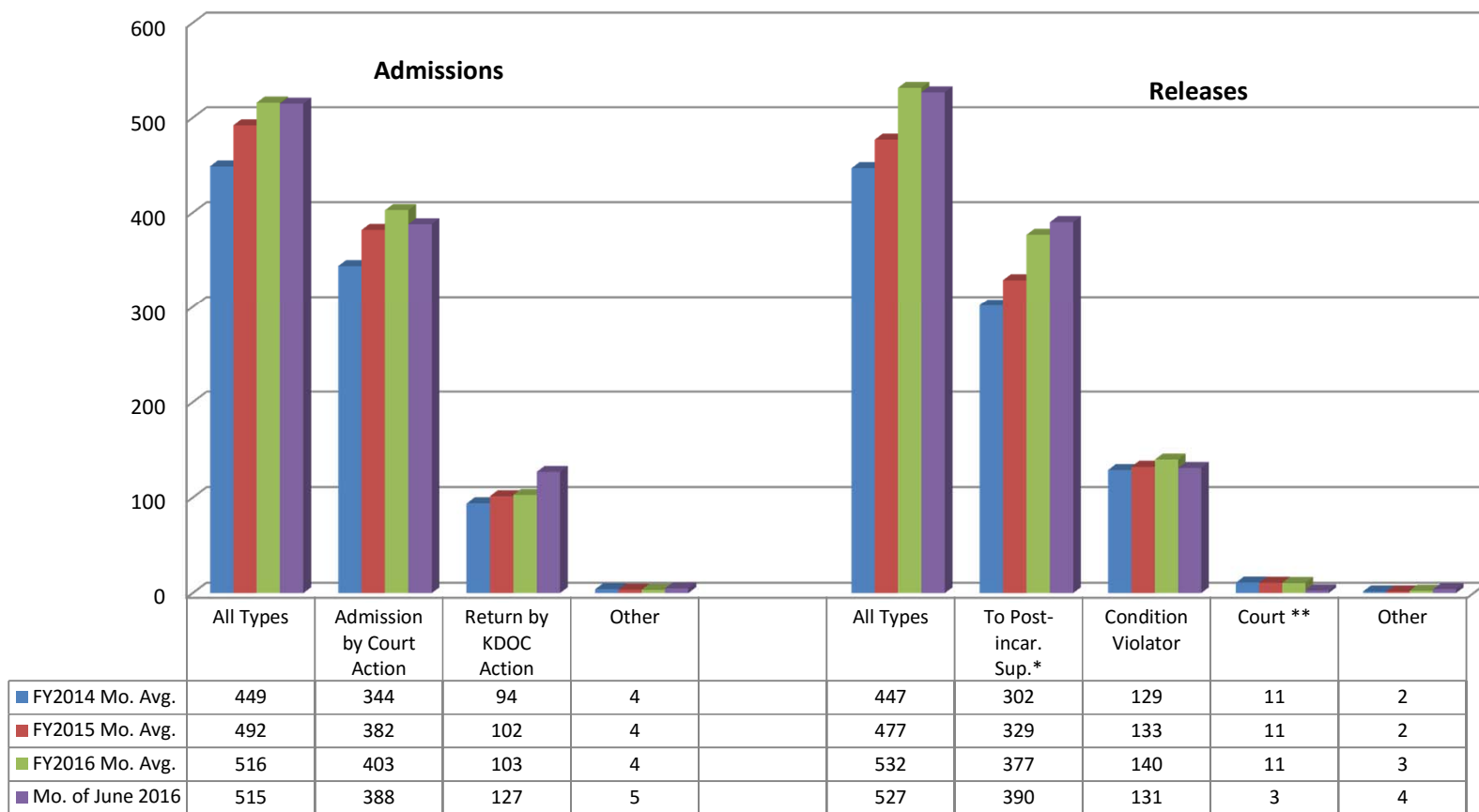
Note: The number of parole offenders drastically reduced in August due to the Justice Reinvestment Initiative which you may read more about at the following website:

<http://www.doc.ks.gov/victim-services/justice-reinvestment>

Kansas Department of Corrections

Graphic Highlights -- Monthly Offender Population Report (June 2016)

Number of Admission and Release Events Per Month (by Major Category): Comparison of FY2014, FY2015, & FY 2016 Monthly Averages with Current Month's Totals



* Includes releases to supervision via the provisions of the Kansas Sentencing Guidelines Act of 1993, as well as parole releases by action of the Kansas Prisoner Review Board.

**Figure can be a negative number for a particular month [since it is based on the total number whose last exit for the period (fiscal year to date) was via "out-to-court" minus the previous month's total, which can be a smaller or greater number].

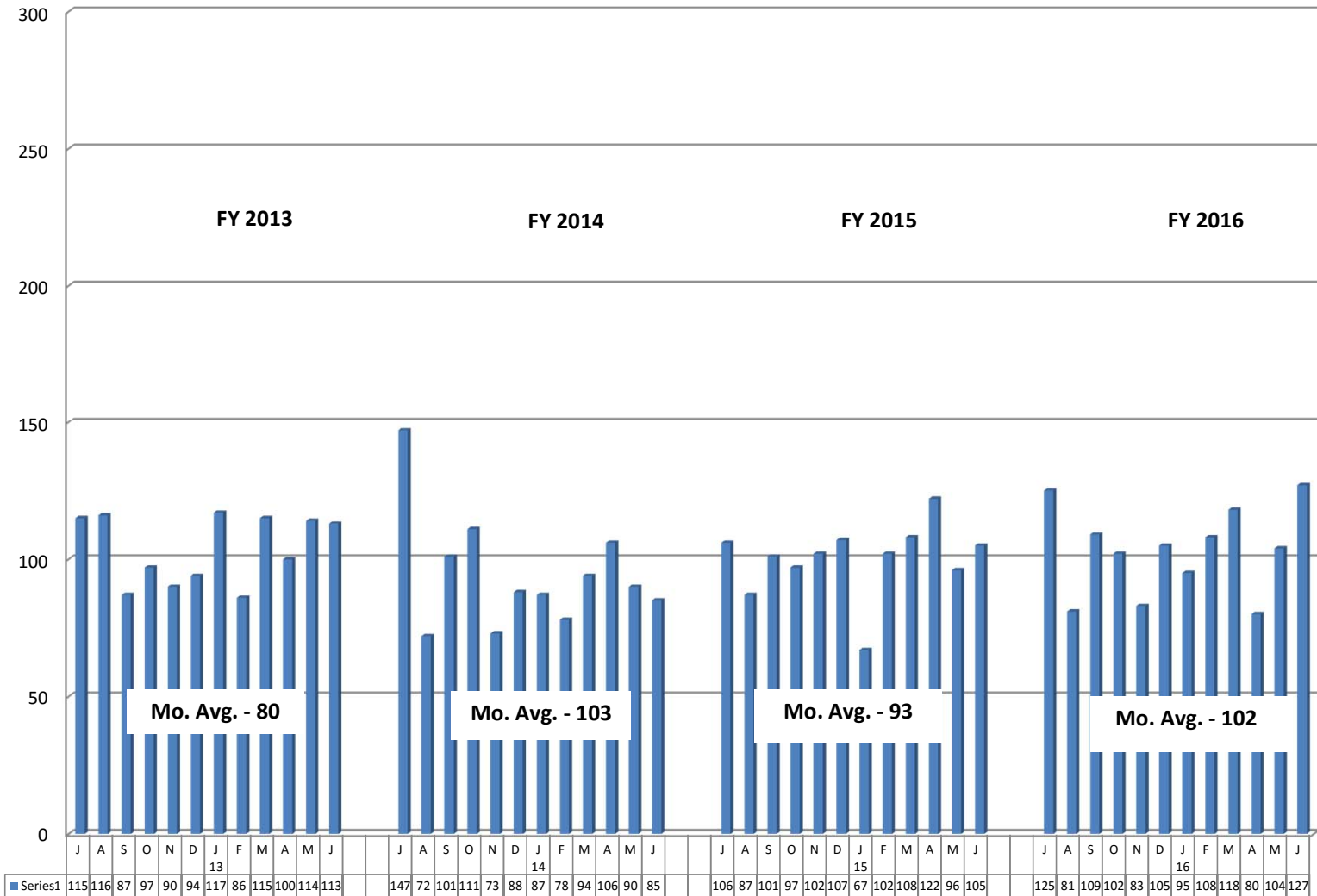
Note: Returned from court appearance is included in the All Types Admission total; returned from escape are included in the All Type Releases total but not its own personal category and Inter-Jurisdictional transfers are included in the All Types Releases total (included in chart).

Note: Number of escapees and Non-Violator Return - No New Sentence is not included in the Admissions

Kansas Department of Corrections

Graphic Highlights -- Monthly Offender Population Report (June 2016)

Number of Return Admissions for Condition Violations by Month: FY2013 - FY2016*



*Total number of admissions for violation of the conditions of release (no new sentence).

**The average number of escapees returned has been excluded in the average - which is 1 offender.

Kansas Department of Corrections
 End-of-Month Offender Population Report: June 2016 (Month 12, FY 2016)

Table 1
Number of Inmates Confined and Average Daily Population: FY 2015 and FY 2016

Correctional Facility	Number Confined			Average Daily Population***		
	5/31/2016	6/30/2016	Change	FY 2015	FY 2016	Change
KDOC Facilities						
Lansing: Total	2,400	2,404	4	2,408	2,403	-5
Central	1,783	1,808	25	1,794	1,797	3
East	617	596	-21	614	605	-9
** South (Osawatomie)			0			0
Hutchinson: Total	1,865	1,862	-3	1,828	1,853	25
Central	1,100	1,093	-7	1,063	1,083	20
East	488	486	-2	489	491	2
South	233	239	6	233	236	3
Work Release	44	44	0	43	43	0
El Dorado: Total	1,543	1,546	3	1,595	1,544	-51
Central (General Population)	928	941	13	963	926	-37
Central - RDU	364	355	-9	380	364	-16
South-East	251	250	-1	253	255	2
Topeka: Total	803	815	12	776	812	36
Central (General Population)	497	489	-8	635	557	-78
RDU	290	306	16	127	235	108
* Federal Inmates			0			0
Work Release	16	20	4	14	20	6
Norton: Total	812	803	-9	825	812	-13
Central	708	694	-14	705	703	-2
** East (Stockton) re-opened 9-2010	104	109	5	120	109	-11
Ellsworth	899	902	3	895	896	1
General Population	899	902	3	895	896	1
Work Release			0			0
Winfield: Total	775	780	5	779	782	3
Central	546	543	-3	542	547	5
Wichita Work Release	229	237	8	237	235	-2
Larned CMHF (Total)	427	419	-8	428	428	0
Central	146	152	6	150	151	1
West	281	267	-14	278	277	-1
Work Release			0			0
Subtotal: KDOC Facilities	9,524	9,531	7	9,533	9,530	-3
Non-KDOC Facilities						
Larned State Hospital	59	42	-17	104	93	-11
Contract Jail Placement [County]	83	86	3	58	86	28
Contract Placement [Out-of-state]			0			0
** Labette CCC			0			0
Johnson County Res. Center (WR)	4	4	0	2	3	1
Subtotal: Non-KDOC Facilities	146	132	-14	164	182	18
Total: All Facilities/Placements	9,670	9,663	-7	9,697	9,712	15
Female Population (included in totals above)						
Topeka	803	815	12	776	812	36
Winfield (WWR)			0			0
Contract Jail (Jo. Co. Res. Center)			0			0
Larned State Hospital	8	8	0	10	8	-2
** Labette CCC			0			0
Subtotal: Females	811	823	12	786	820	34

* Federal inmates housed at TCF under contract between the Federal Bureau of Prisons and the Kansas Department of Corrections.

** Housing unit closed (or placement option removed) during FY 2009 because of budget constraints. NCF-East (Stockton) re-opened 9-2010.

*** Average Daily Population (ADP) columns: Because of rounding, the sum of the units might not equal the total for the facility. And, the sum of the facilities might not equal the grand total.

Kansas Department of Corrections
End-of-Month Offender Population Report: June 2016 (Month 12, FY 2016)

Table 2
Total Admission and Release Events: FY 2014, FY 2015, and FY 2016

<u>Type of Admission</u>	Total Admissions			Avg. Number Per Month		
	FY 2014	FY 2015	FY 2016	FY 2014	FY 2015	FY 2016
Admissions by Court Action:						
New Court Commitment	1,810	1,862	1,930	150.8	155.2	160.8
*Sanction from Probation (CC)	323	692	1,003	26.9	57.7	83.6
Probation Violator, No New Sentence	1,368	1,319	1,178	114.0	109.9	98.2
Probation Violator, New Sentence	257	331	331	21.4	27.6	27.6
Probation Violator, New Conviction	134	168	188	11.2	14.0	15.7
Parole Violator, New Sentence	180	144	144	15.0	12.0	12.0
Parole to Detainer, New Sentence	32	26	28	2.7	2.2	2.3
Non Violator Return, New Sentence	20	7	49	1.7	0.6	4.1
Parole Violator, Pending New Sentence	6	35	1	0.5	2.9	0.1
Subtotal: Court Commitments	4,130	4,584	4,852	344.2	382.0	404.3
Return from Court Appearance	89	79	94	7.4	6.6	7.8
Subtotal: Admission by Court Action	4,219	4,663	4,946	351.6	388.6	412.2
Return by KDOC Action:						
Parole Violator, No New Sentence	1,117	1,214	1,236	93.1	101.2	103.0
Cond Rel Viol No New Sentence	-	5	1	0.0	0.4	0.1
Non Violator Return No New Sentence	-	3	-	0.0	0.3	0.0
Return from Escape	15	8	1	1.3	0.7	0.1
Par/CR/PRS/ Adm. Hold--Poss. Vio.	-	-	-	0.0	0.0	0.0
Subtotal: Return by KDOC Action	1,132	1,230	1,238	94.3	102.5	103.2
Inter-jurisdictional Transfer:						
Interstate/Federal Compact Received	16	8	15	1.3	0.7	1.3
Kansas Inmate Returned from Another Jurisdiction	26	37	29	2.2	3.1	2.4
Subtotal: Inter-jurisdictional Transfer	42	45	44	3.5	3.8	3.7
Total: All Types of Admission	5,393	5,938	6,228	449.4	494.8	519.0

Note: Totals may be slightly off when comparing to page 3 due to rounding.

Source: KDOC computerized report PGM-ISR0445.

*Sanctions 120 days or less is 695 offenders; Sanctions 180 days or greater is 308 offenders

Kansas Department of Corrections
End-of-Month Offender Population Report: May 2016 (Month 11, FY 2016)

Table 2 (continued)
Total Admission and Release Events: FY 2014, FY 2015, and FY 2016

<u>Type of Release</u>	Total Releases			Avg. Number Per Month		
	FY 2014	FY 2015	FY 2016	FY 2014	FY 2015	FY 2016
Release to Post-incarceration Supervision**	3,619	3,948	4,521	301.6	329.0	376.8
Conditional Release	-	-	-	0.0	0.0	0.0
Expiration of Sentence	1,552	1,590	1,678	129.3	132.5	139.8
Commutation or Pardon	-	-	-	0.0	0.0	0.0
Inter-jurisdictional Transfer:						
Kansas Inmate Released for Housing	19	16	14	1.6	1.3	1.2
Interstate/Fed. Inmate Released to Sending Juris.	10	13	4	0.8	1.1	0.3
Subtotal: Inter-jurisdictional Transfer	29	29	18	2.4	2.4	1.5
Court-ordered Release:						
Probation	5	6	7	0.4	0.5	0.6
Returned Parolee Placed on Probation	-	-	-	0.0	0.0	0.0
Released on Appeal Bond	4	3	7	0.3	0.3	0.6
Released for Court Appearance	107	113	102	8.9	9.4	8.5
Other Final Release by Court Order	18	9	14	1.5	0.8	1.2
Subtotal: Court-ordered Release	134	131	130	11.2	10.9	10.8
Escape	13	5	4	1.1	0.4	0.3
Death (All Causes)	19	23	31	1.6	1.9	2.6
Total: All Types of Release	5,366	5,726	6,382	447.2	477.2	531.8

* Certain types of transactions involving known temporary exits from a correctional facility have been excluded from the body of the table (release to court/return from court--1211 in FY2014, 1513 in FY2015, and 1497 in FY2016).

** Includes releases to post-incarceration supervision via the provisions of the Kansas Sentencing Guidelines Act of July 1993, as well as parole releases by action of the Kansas Prisoner Review Board.

Note: Totals may be slightly off due to rounding when comparing to page 3

Kansas Department of Corrections
 End-of-Month Offender Population Report: June 2016 (Month 12, FY 2016)
Table 3
Distribution of Inmate Population by Type of Latest Admission:
Comparison of May 31st, 2016 and June 30th, 2016

Note. The information presented here pertains to the inmate population, on the specified dates and not to admissions during the period.

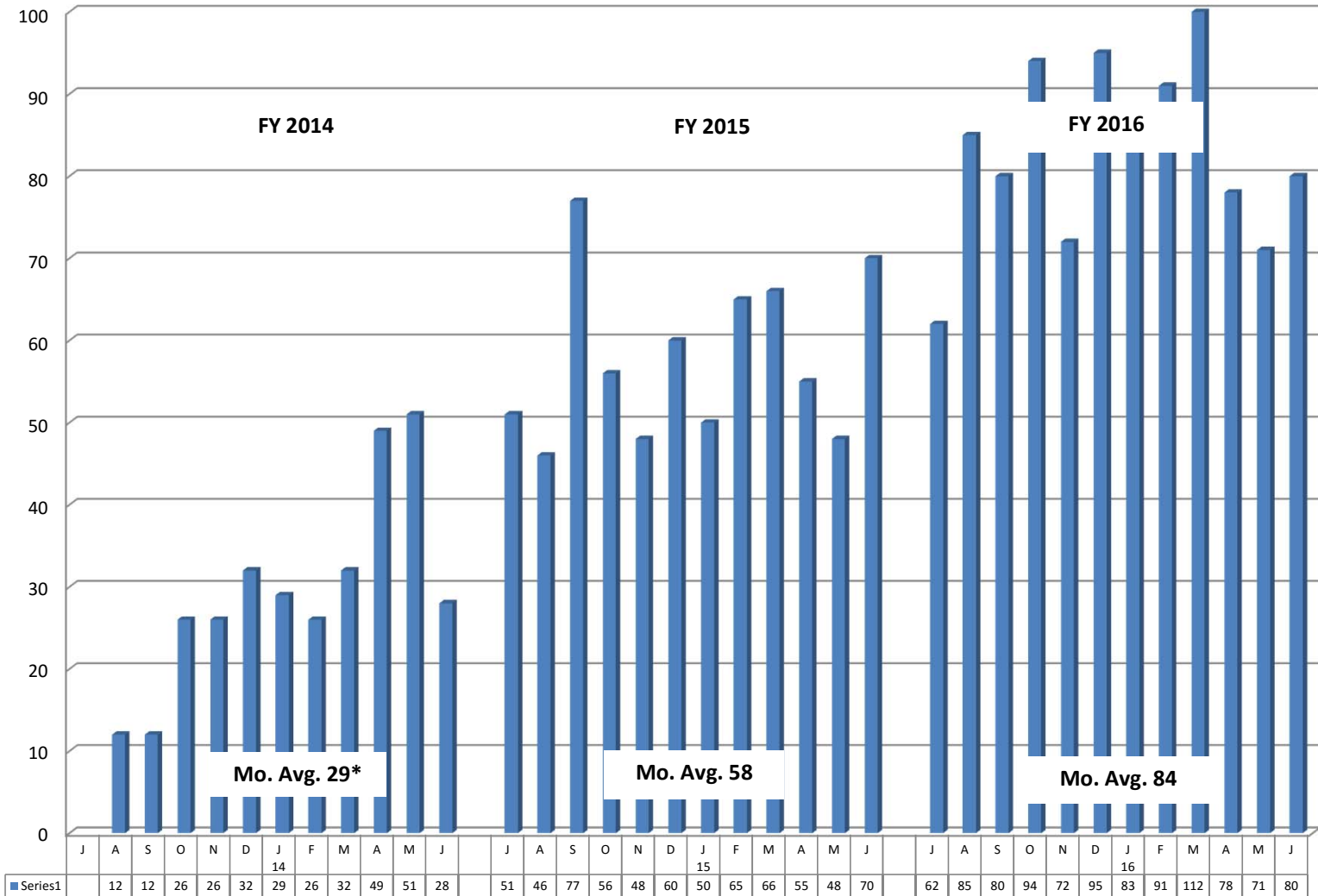
Type of Admission [Latest Admission Per Master Record]		*Number of Inmates		
Admission Code [OMIS]	Admission Description	5/31/2016	6/30/2016	Difference May minus June
Admission by Court Action:				
010-1010	New Court Commitment	6,325	6,320	(5)
010-1022	Sanction from Probation	111	109	(2)
010-2010	Probation Violator, No New Sentence	1,055	1,033	(22)
010-2020	Probation Violator, New Sentence	641	650	9
010-2022	Probation Violator, New Conviction	175	167	(8)
020-1020 & 020-1025	Parole Violator, New Sentence	650	650	-
020-1022	Parole Violator, Pending New Sentence	1	2	1
020-2020	Conditional Release Violator, New Sentence	26	26	-
020-6020	Non-violator Return, New Sentence	41	42	1
Subtotal: Latest Adm. as Court Commitment		9,025	8,999	(26)
Return by KDOC Action:				
020-1010	Parole Violator, No New Sentence	551	572	21
020-2010	Conditional Release Violator, No New Sentence	17	15	(2)
020-5010	Return from Escape	-	-	-
020-6010	Non-violator Return, No New Sentence	1	-	(1)
050-1010	Par/CR/PRS/ Adm. Hold--Poss. Vio.	-	-	-
Subtotal: Latest Adm. as Return by KDOC Action		569	587	18
Inter-jurisdictional Transfer:				
010-4010	Interstate/Federal Compact Received	74	75	1
020-3010	Kansas Inmate Returned from Another Jurisdiction	2	2	-
Subtotal: Latest Adm. as Inter-jurisdictional Transfer		76	77	1
Total: All Types of Admission		9,670	9,663	(7)

*The SAS end-of-month population figure sometimes varies slightly from the OMIS population report because the SAS file is generated at a different time of day than the OMIS population report.

Kansas Department of Corrections

Graphic Highlights -- Monthly Offender Population Report (June 2016)

Number of Admissions for Probation Sanctions by Month: FY2014 - FY2016



* Average for FY14 is calculated based on the number of months whose data were available. Data were not available for July 2013, therefore it was not included in the average calculation.