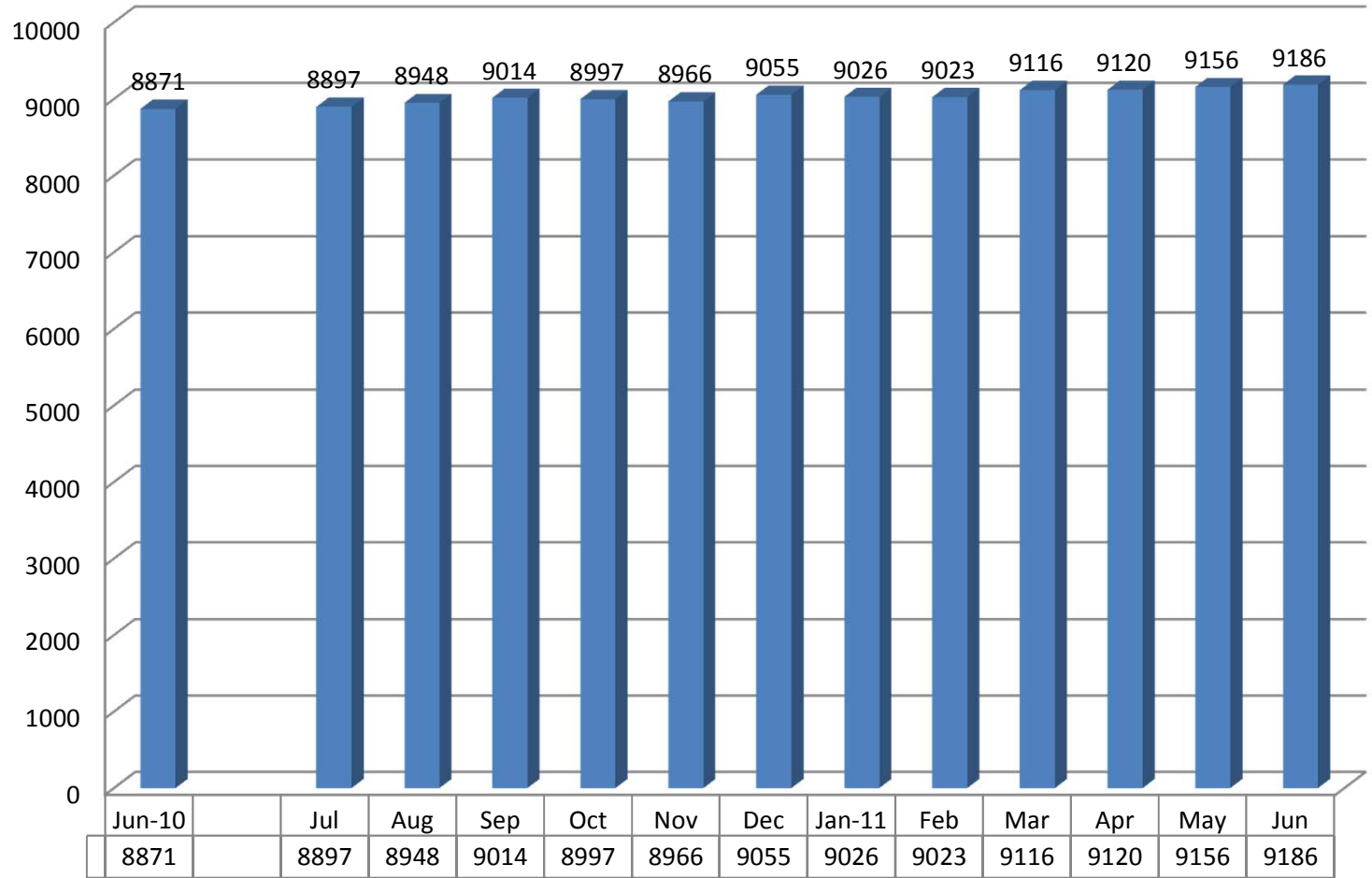


Kansas Department of Corrections
Graphic Highlights -- Monthly Offender Population Report (June 2011)
End-of-Month Inmate Population: FY 2011 Year-End

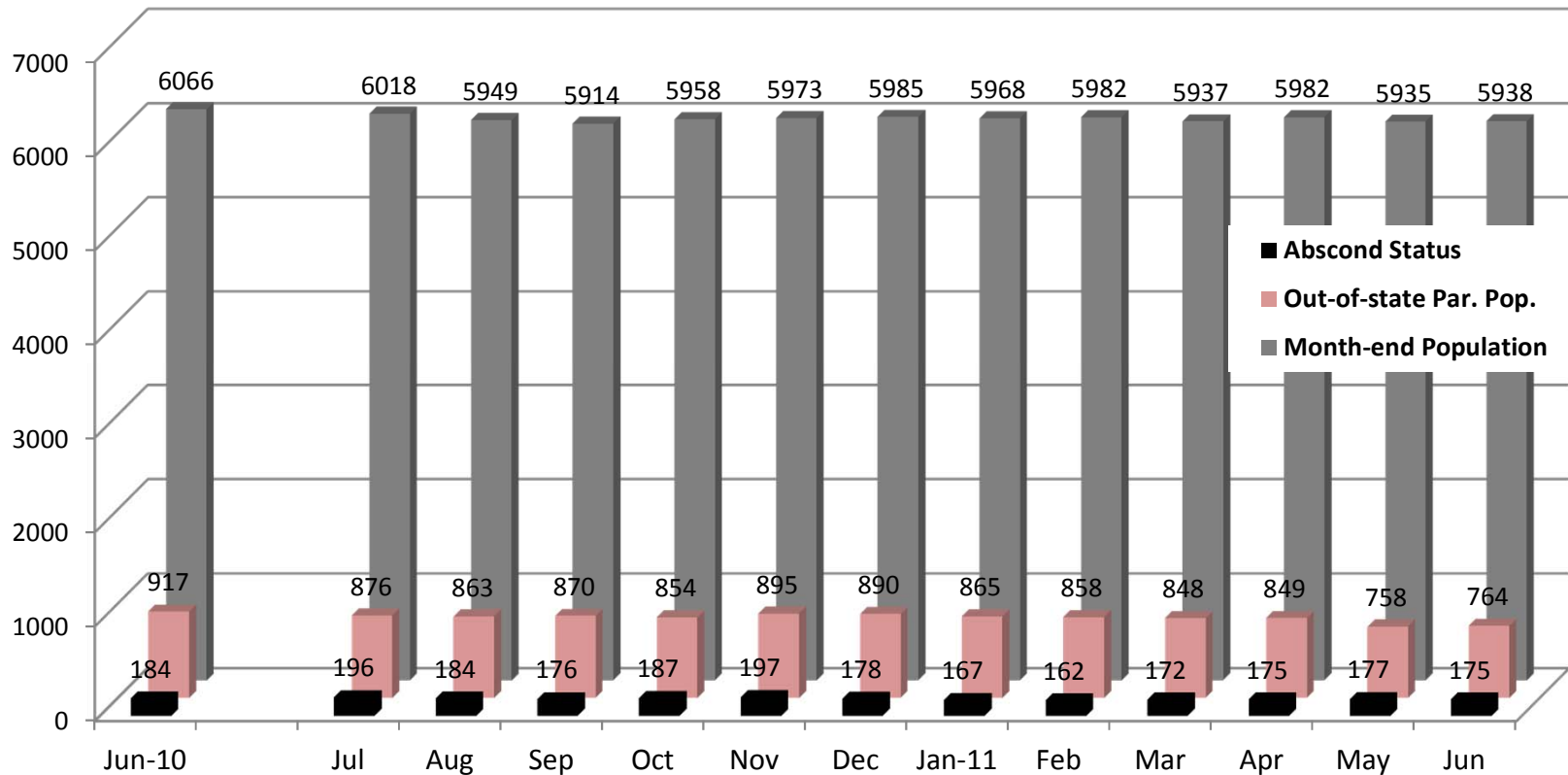


Change from Prev. Mo.		26	51	66	-17	-31	89	-29	-3	93	4	36	30
Change from June, 2010	8871	26	77	143	126	95	184	155	152	245	249	285	315

**Figures reflect the total inmate population (combined DOC and Non-DOC facility populations)*

**Kansas Department of Corrections
Graphic Highlights -- Monthly Offender Population Report (June 2011)**

**Components of the End-of-Month Population Under Post-Incarceration Management:
FY2011 Year-End**



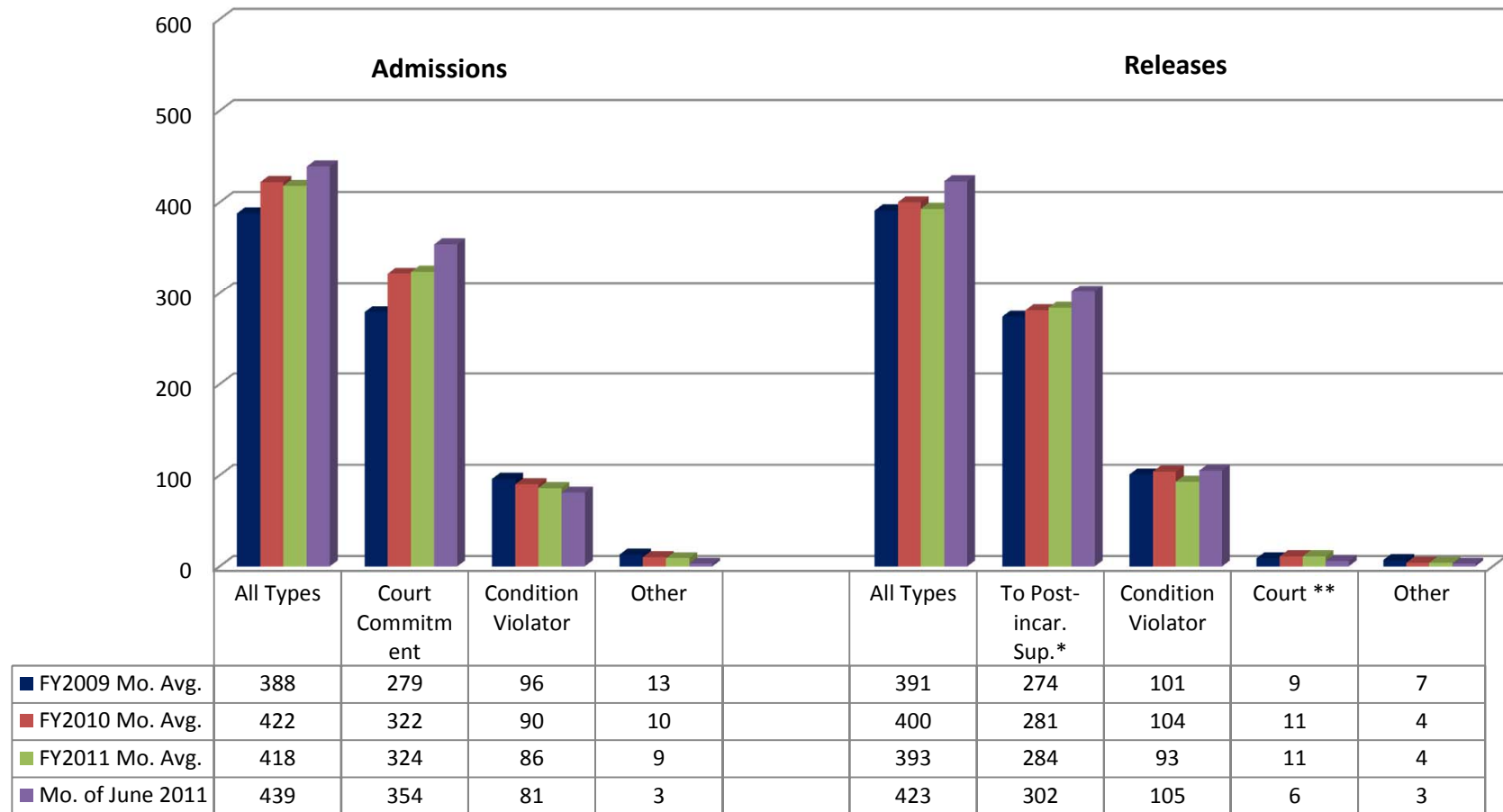
In-State Population
(Change):

Change from Prev. Month	-48	-69	-35	44	15	12	-17	14	-45	45	-47	3
Change from June, 2010	-48	-117	-152	-108	-93	-81	-98	-84	-129	-84	-131	-128

**In-state population is comprised of Kansas offenders supervised in Kansas and out-of-state offenders supervised in Kansas. Out-of-state population is comprised of Kansas offenders supervised out-of-state. Those on abscond status have active warrants (whereabouts unknown).*

Kansas Department of Corrections
Graphic Highlights -- Monthly Offender Population Report (June 2011)

Number of Admission and Release Events Per Month (by Major Category): Comparison of FY2009, FY2010, and FY2011 Year-End Monthly Averages with Current Month's Totals



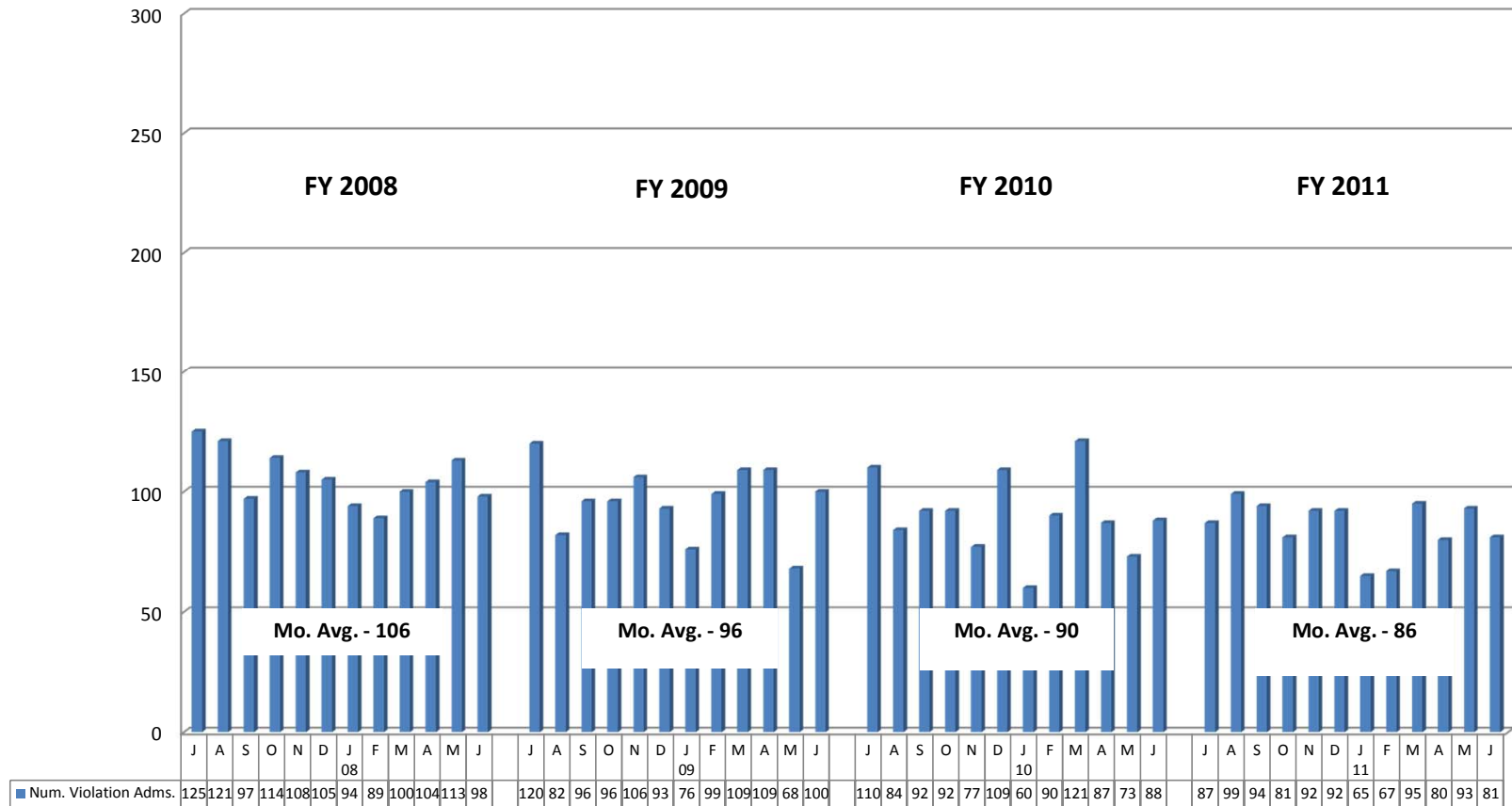
*Includes releases to supervision via the provisions of the Kansas Sentencing Guidelines Act of 1993, as well as parole releases by action of the Kansas Parole Board.

**Figure can be a negative number for a particular month [since it is based on the total numbers who last exit for the period (fiscal year to date) was via "out-to-court" minus the previous month's total, which can be a smaller or greater number].

Kansas Department of Corrections

Graphic Highlights -- Monthly Offender Population Report (June 2011)

Number of Return Admissions for Condition Violations by Month: FY2008 - FY2011



*Total number of admissions for violation of the conditions of release (no new sentence).

Kansas Department of Corrections
 End-of-Month Offender Population Report: June 2011 (Month 12, FY 2011)

Table 1
Number of Inmates Confined and Average Daily Population: FY 2010 and FY 2011

Correctional Facility	Number Confined			Average Daily Population***		
	6/30/2010	6/30/2011	Change	FY 2010	FY 2011	Change
KDOC Facilities						
Lansing: Total	2,354	2,412	58	2,346	2,368	22
Central	1,740	1,789	49	1,729	1,749	20
East	614	623	9	617	619	2
** South (Osawatomie)	-	-	0	-	-	0
Hutchinson: Total	1,879	1,841	-38	1,783	1,863	80
Central	1,106	1,060	-46	1,018	1,086	68
East	492	495	3	482	493	11
South	236	240	4	236	238	2
Work Release	45	46	1	47	46	-1
El Dorado: Total	1,293	1,331	38	1,242	1,281	39
Central (General Population)	922	973	51	904	937	33
Central - RDU	371	358	-13	338	344	6
** East (Toronto)	-	-	0	-	-	0
** North	-	-	0	-	-	0
Topeka: Total	588	626	38	562	615	53
Central (General Population)	536	551	15	512	597	85
RDU	27	54	27	24	30	6
* Federal Inmates	7	6	-1	8	7	-1
Work Release	18	15	-3	19	18	-1
Norton: Total	701	847	146	703	808	105
Central	701	721	20	703	713	10
** East (Stockton) <i>re-opened 9-2010</i>	-	126	126	-	95	95
Ellsworth	823	823	0	812	820	8
General Population	823	823	0	812	820	8
Work Release	-	-	0	-	-	0
Winfield: Total	758	805	47	774	790	16
Central	509	551	42	523	541	18
Wichita Work Release	249	254	5	251	249	-2
Larned CMHF (Total)	360	384	24	352	369	17
Central	145	141	-4	148	150	2
West	215	243	28	204	219	15
Work Release	-	-	0	-	-	0
Subtotal: KDOC Facilities	8,756	9,069	313	8,575	8,914	339
Non-KDOC Facilities						
Larned State Hospital	103	108	5	110	105	-5
Contract Jail Placement [County]	12	9	-3	4	6	2
Contract Placement [Out-of-state]	-	-	0	-	-	0
** Labette CCC	-	-	0	-	-	0
Subtotal: Non-KDOC Facilities	115	117	2	114	112	-2
Total: All Facilities/Placements	8,871	9,186	315	8,689	9,026	337
Female Population (included in totals above)						
Topeka	588	626	38	562	615	53
Winfield (WWR)	-	-	0	-	-	0
Contract Jail (Jo. Co. Res. Center)	2	-	-2	2	-	-2
Larned State Hospital	12	13	1	17	13	-4
** Labette CCC	-	-	0	-	-	0
Subtotal: Females	602	639	37	581	627	46

* Federal inmates housed at TCF under contract between the Federal Bureau of Prisons and the Kansas Department of Corrections.
 ** Housing unit closed (or placement option removed) during FY 2009 because of budget constrictions. NCF-East (Stockton) re-opened 9-2010.
 *** Average Daily Population (ADP) columns: Because of rounding, the sum of the units might not equal the total for the facility. And, the sum of the facilities might not equal the grand total.

Kansas Department of Corrections
End-of-Month Offender Population Report: June 2011 (Month 12, FY 2011)

Table 2
Total Admission and Release Events: FY 2009, FY 2010, and FY 2011

<u>Type of Admission</u>	Total Admissions			Avg. Number Per Month		
	FY 2009	FY 2010	FY 2011	FY 2009	FY 2010	FY 2011
Admissions by Court Action:						
New Court Commitment	1,675	1,883	1,976	139.6	156.9	164.7
Probation Violator, No New Sentence	1,456	1,713	1,623	121.3	142.8	135.3
Probation Violator, New Sentence	89	84	91	7.4	7.0	7.6
Parole Violator, New Sentence	120	163	161	10.0	13.6	13.4
Conditional Release Violator, New Sentence	1	-	1	0.1	0.0	0.1
Non-violator Return, New Sentence (020-6020)	9	24	23	0.8	2.0	1.9
Subtotal: Court Commitments	3,350	3,867	3,875	279.2	322.3	322.9
Return from Court Appearance	99	58	71	8.3	4.8	5.9
Subtotal: Admission by Court Action	3,449	3,925	3,946	287.4	327.1	328.8
Return by KDOC Action:						
Parole Violator, No New Sentence	1,152	1,080	1,021	96.0	90.0	85.1
Conditional Release Violator, No New Sentence	2	3	4	0.2	0.3	0.3
Return from Escape	11	14	10	0.9	1.2	0.8
Non-violator Return, No New Sentence (020-6010)	1	1	2	0.1	0.1	0.2
Par/CR/PRS/ Adm. Hold--Poss. Vio.	-	-	-	0.0	0.0	0.0
Subtotal: Return by KDOC Action	1,166	1,098	1,037	97.2	91.5	86.4
Inter-jurisdictional Transfer:						
Interstate/Federal Compact Received	13	11	8	1.1	0.9	0.7
Kansas Inmate Returned from Another Jurisdiction	23	25	19	1.9	2.1	1.6
Subtotal: Inter-jurisdictional Transfer	36	36	27	3.0	3.0	2.3
Total: All Types of Admission	4,651	5,059	5,010	387.6	421.6	417.5

Month # 12

Source: KDOC computerized report PGM-ISR0445.

Kansas Department of Corrections
End-of-Month Offender Population Report: June 2011 (Month 12, FY 2011)

Table 2 (continued)
Total Admission and Release Events: FY 2009, FY 2010, and FY 2011

<u>Type of Release</u>	Total Releases			Avg. Number Per Month		
	FY 2009	FY 2010	FY 2011	FY 2009	FY 2010	FY 2011
Release to Post-incarceration Supervision**	3,293	3,369	3,419	274.4	280.8	284.9
Conditional Release	8	7	12	0.7	0.6	1.0
Expiration of Sentence	1,209	1,242	1,115	100.8	103.5	92.9
Commutation or Pardon	-	-	-	0.0	0.0	0.0
Inter-jurisdictional Transfer:						
Kansas Inmate Released for Housing	16	13	8	1.3	1.1	0.7
Interstate/Fed. Inmate Released to Sending Juris.	17	13	12	1.4	1.1	1.0
Subtotal: Inter-jurisdictional Transfer	33	26	20	2.8	2.2	1.7
Court-ordered Release:						
Probation	6	6	4	0.5	0.5	0.3
Returned Parolee Placed on Probation	-	-	-	0.0	0.0	0.0
Released on Appeal Bond	1	10	1	0.1	0.8	0.1
Released for Court Appearance	91	92	111	7.6	7.7	9.3
Other Final Release by Court Order	10	19	15	0.8	1.6	1.3
Subtotal: Court-ordered Release	108	127	131	9.0	10.6	10.9
Escape	15	9	7	1.3	0.8	0.6
Death (All Causes)	25	21	20	2.1	1.8	1.7
Total: All Types of Release	4,691	4,801	4,724	390.9	400.1	393.7

Month # 12

* Certain types of transactions involving known temporary exits from a correctional facility have been excluded from the body of the table (release to court/return from court--1,168 in FY 2009, 1,175 in FY 2010, and 1,268 in FY 2011).

** Includes releases to post-incarceration supervision via the provisions of the Kansas Sentencing Guidelines Act of July 1993, as well as parole releases by action of the Kansas Parole Board.

Kansas Department of Corrections
 End-of-Month Offender Population Report: June 2011 (Month 12, FY 2011)

Table 3
Distribution of Inmate Population by Type of Latest Admission:
Comparison of May 31st and June 30th, 2011

Note. The information presented here pertains to the inmate population on the specified dates and not to admissions during the period.

Type of Admission [Latest Admission Per Master Record]		*Number of Inmates		
Admission Code [OMIS]	Admission Description	5/31/2011	6/30/2011	Difference Apr. Minus Mar.
Admission by Court Action:				
010-1010	New Court Commitment	5,929	5,964	35
010-2010	Probation Violator, No New Sentence	1,544	1,564	20
010-2020	Probation Violator, New Sentence	222	223	1
020-1020 & 020-1025	Parole Violator, New Sentence	673	675	2
020-2020	Conditional Release Violator, New Sentence	34	33	(1)
020-6020	Non-violator Return, New Sentence	30	30	-
Subtotal: Latest Adm. as Court Commitment		8,432	8,489	57
Return by KDOC Action:				
020-1010	Parole Violator, No New Sentence	591	567	(24)
020-2010	Conditional Release Violator, No New Sentence	28	27	(1)
020-5010	Return from Escape	1	1	-
020-6010	Non-violator Return, No New Sentence	2	2	-
040-1010	Par/CR/PRS/ Adm. Hold--Poss. Vio.	-	-	-
Subtotal: Latest Adm. as Return by KDOC Action		622	597	(25)
Inter-jurisdictional Transfer:				
010-4010	Interstate/Federal Compact Received	75	73	(2)
020-3010	Kansas Inmate Returned from Another Jurisdiction	29	27	(2)
Subtotal: Latest Adm. as Inter-jurisdictional Transfer		104	100	(4)
Total: All Types of Admission		9,158	9,186	28