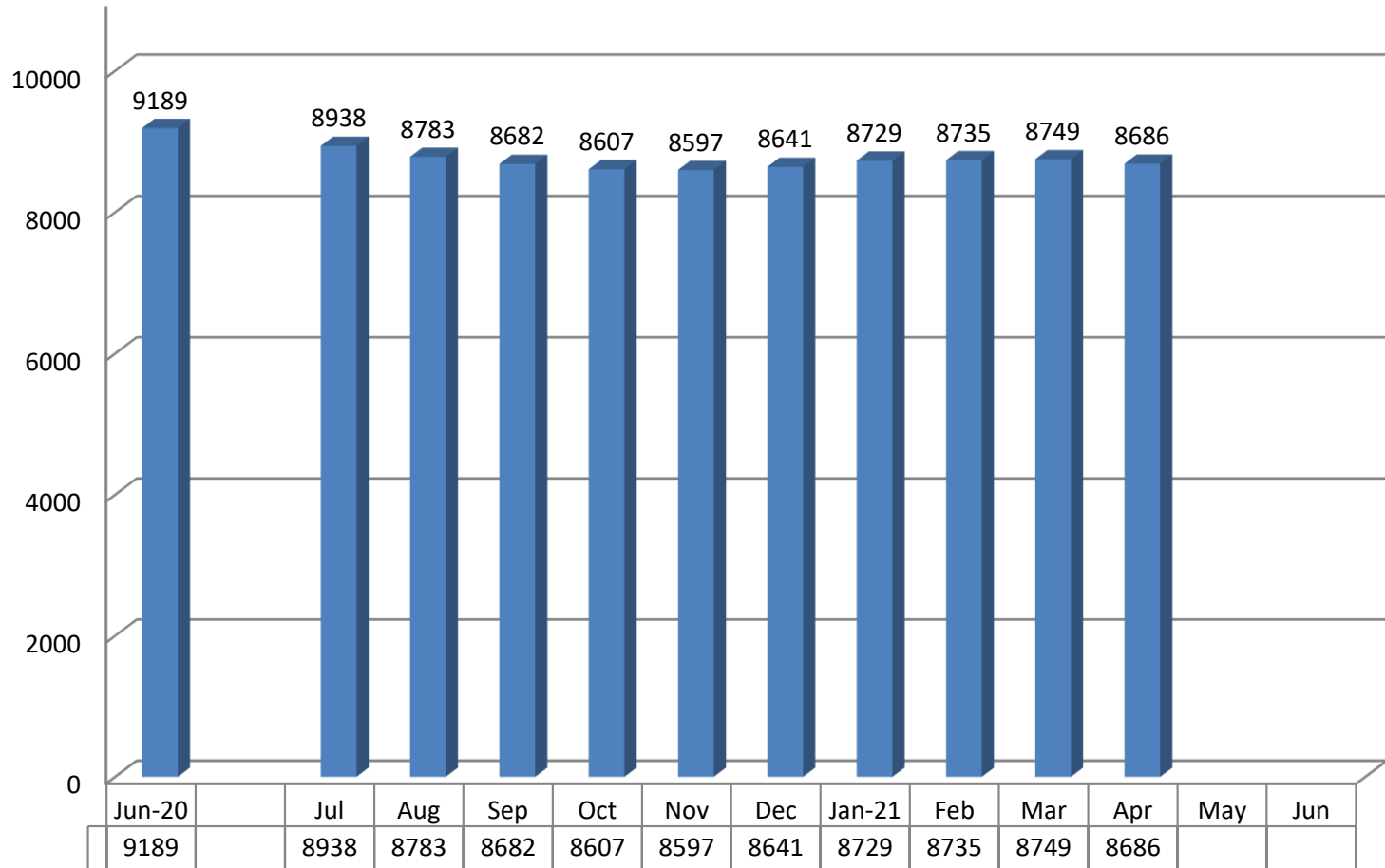


**Kansas Department of Corrections**  
**Graphic Highlights -- Monthly Offender Population Report: (April 2021)**  
**End-of-Month Inmate Population: FY 2021 To-Date**



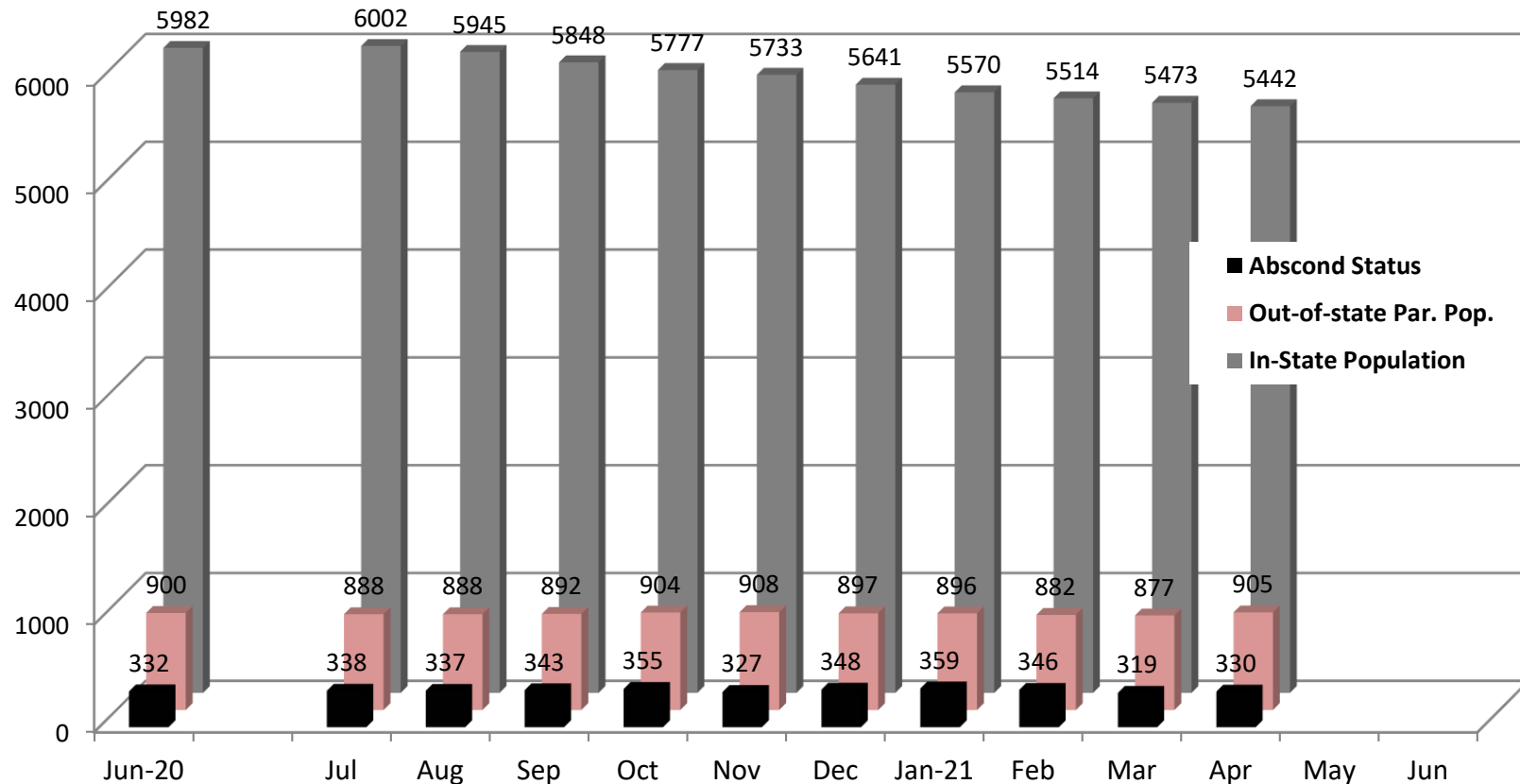
Change from Prev. Mo : -63

Change from June, 2020 : -503

*\*Figures reflect the total inmate population (combined DOC and Non-DOC facility populations) as shown on OMIS rpt - ISR0333 page1.*

**Kansas Department of Corrections  
Graphic Highlights -- Monthly Offender Population Report (April 2021)**

**Components of the End-of-Month Population Under Post-Incarceration Management:  
FY2021**



In-State Population  
(Change):

Change from Prev. Month: -31

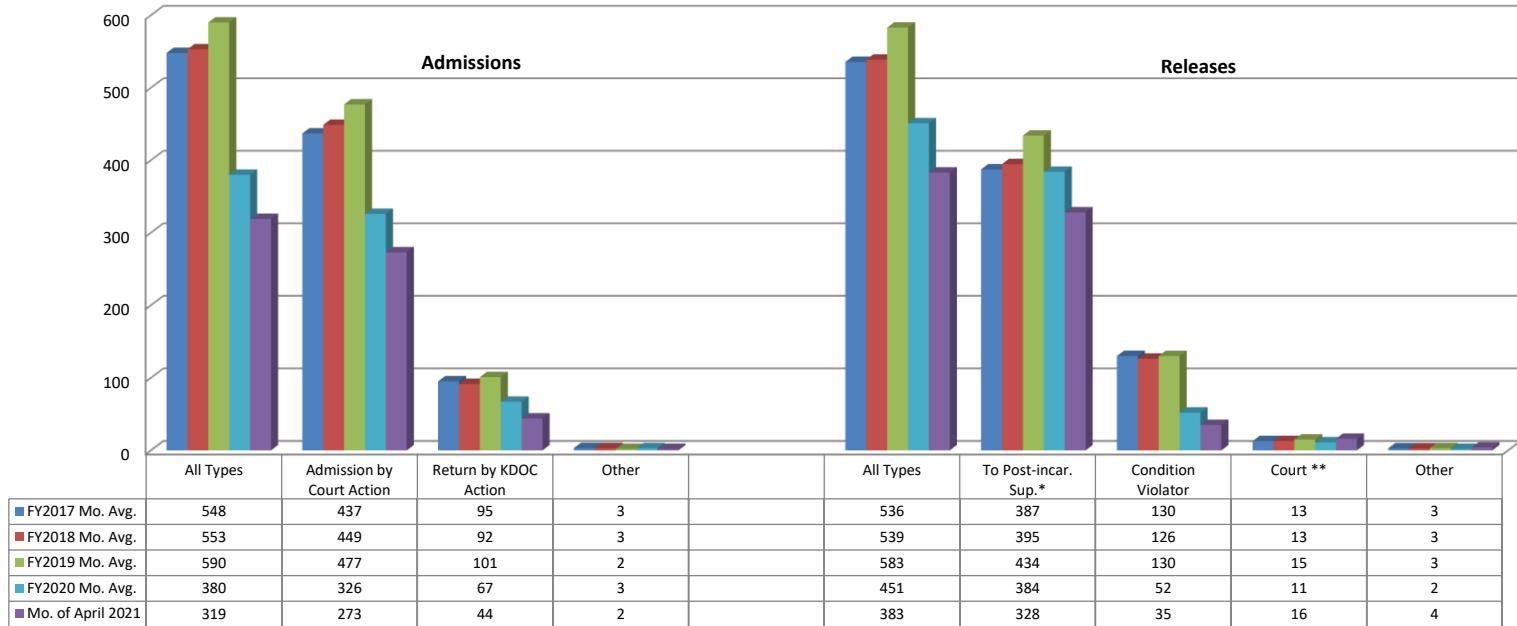
Change from June, 2020 : -540

*\*In-state population is comprised of Kansas offenders supervised in Kansas and out-of-state offenders supervised in Kansas. Out-of-state population is comprised of Kansas offenders supervised out-of-state. Those on abscond status have active warrants (whereabouts unknown)*

*Note: The number of parole offenders drastically reduced in August due to the Justice Reinvestment Initiative which you may read more about at the following website:*

*<http://www.doc.ks.gov/victim-services/justice-reinvestment> (data are from the OMIS rpt: ISRO333 page 2: parole population)*

**Number of Admission and Release Events Per Month (by Major Category): Comparison of FY2017, FY2018, FY2019, FY2020, and FY2021 Monthly Averages with Current Month's Totals**



\* Includes releases to supervision via the provisions of the Kansas Sentencing Guidelines Act of 1993, as well as parole releases by action of the Kansas Prisoner Review Board.

\*\*Figure can be a negative number for a particular month [since it is based on the total number whose last exit for the period (fiscal year to date) was via "out-to-court" minus the previous month's total, which can be a smaller or greater number].

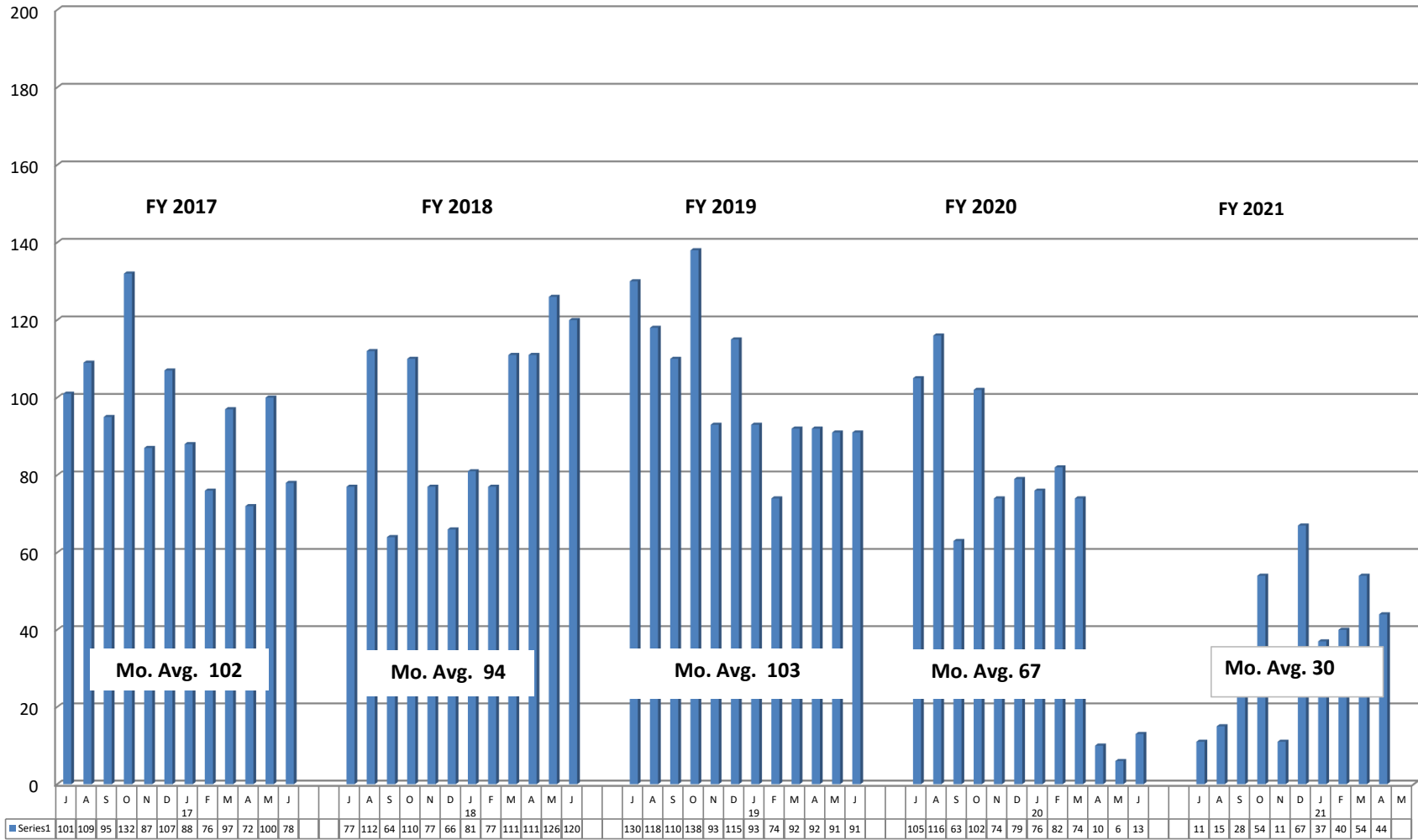
Note: Returned from court appearance is included in the All Types Admission total; returned from escape are included in the All Type Releases total but not its own personal category and Inter-Jurisdictional transfers are included in the All Types Releases total (included in chart). Note: Admissions FY20 April May 2020 Covid19 Impact for April May 2020

Note: Number of escapees and Non-Violator Return - No New Sentence is not included in the Admissions Data from OMIS rep ISR0445 In and out Admissions and Releases

Kansas Department of Corrections

Graphic Highlights -- Monthly Offender Population Report April: 2021)

**Number of Return Admissions for Condition Violations by Month** (Return by KDOC Action OMIS rpt: ISR0445 page1): **FY2017 - FY2021\***



\*Total number of admissions for violation of the conditions of release (no new sentence).

Kansas Department of Corrections  
 End-of-Month Offender Population Report: April 2021 (Month 10, FY 2021)

**Table 1**  
**Number of Inmates Confined and Average Daily Population: FY 2020 and FY 2021**

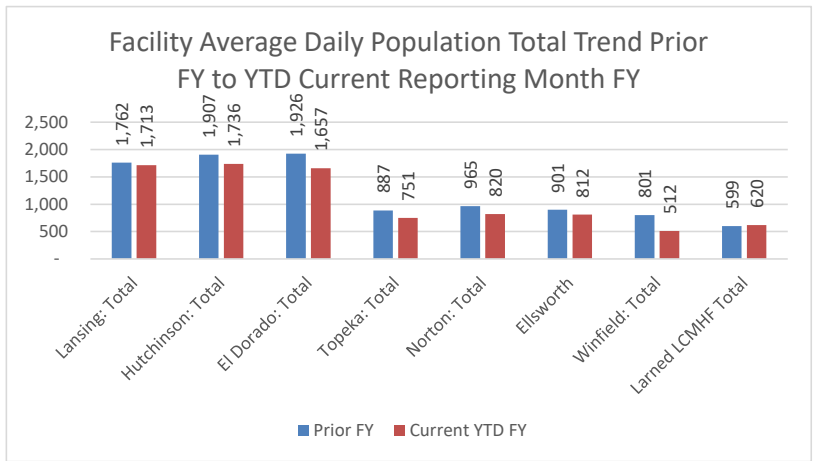
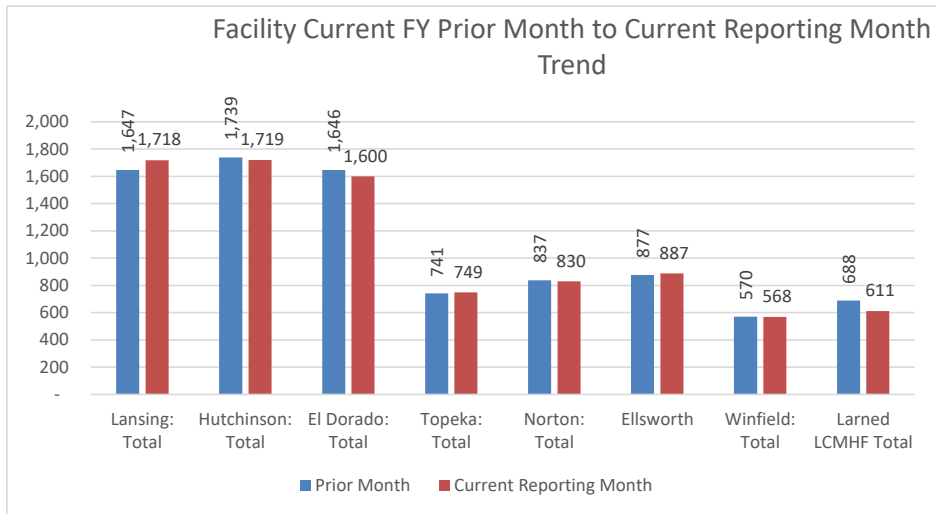
Correctional Facility	Number Confined			Average Daily Population***		
	3/31/2021	4/30/2021	Change	FY 2020	FY 2021	Change
<b>KDOC Facilities</b>						
<b>Lansing: Total</b>	<b>1,647</b>	<b>1,718</b>	<b>71</b>	<b>1,762</b>	<b>1,713</b>	<b>-49</b>
Central	1,310	1,398	88	1,311	1,385	74
East	337	320	-17	451	328	-123
** South (Osawatomie)	-	-	0	-	-	0
<b>Hutchinson: Total</b>	<b>1,739</b>	<b>1,719</b>	<b>-20</b>	<b>1,907</b>	<b>1,736</b>	<b>-171</b>
Central	1,034	965	-69	1,087	1,050	-37
East	436	476	40	494	411	-83
South	269	278	9	315	274	-41
Work Release	-	-	0	11	1	-10
<b>El Dorado: Total</b>	<b>1,646</b>	<b>1,600</b>	<b>-46</b>	<b>1,926</b>	<b>1,657</b>	<b>-269</b>
Central (General Population)	1,081	1,071	-10	1,242	1,156	-86
Central - RDU	469	426	-43	435	424	-11
South-East	96	103	7	249	77	(172)
<b>Topeka: Total</b>	<b>741</b>	<b>749</b>	<b>8</b>	<b>887</b>	<b>751</b>	<b>-136</b>
Central (General Population)	675	676	1	810	694	-116
RDU	66	73	7	54	57	3
* Federal Inmates	-	-	0	-	-	0
Work Release	-	-	0	23	-	-23
<b>Norton: Total</b>	<b>837</b>	<b>830</b>	<b>-7</b>	<b>965</b>	<b>820</b>	<b>-145</b>
Central	733	722	-11	839	731	-108
** East (Stockton) <i>re-opened 9-2010</i>	104	108	4	126	89	-37
<b>Ellsworth</b>	<b>877</b>	<b>887</b>	<b>10</b>	<b>901</b>	<b>812</b>	<b>-89</b>
General Population	877	887	10	901	812	-89
Work Release	-	-	0	-	-	0
<b>Winfield: Total</b>	<b>570</b>	<b>568</b>	<b>-2</b>	<b>801</b>	<b>512</b>	<b>-289</b>
Central	560	545	-15	582	500	-82
Wichita Work Release	10	23	13	219	12	-207
<b>Larned LCMHF Total</b>	<b>688</b>	<b>611</b>	<b>-77</b>	<b>599</b>	<b>620</b>	<b>21</b>
Central	295	293	-2	310	296	-14
South	122	64	-58	13	80	67
West	271	254	-17	276	244	-32
Work Release	-	-	0	-	-	0
House Arrest	-	-	0	1	-	
<b>Subtotal: KDOC Facilities</b>	<b>8,745</b>	<b>8,682</b>	<b>-63</b>	<b>9,748</b>	<b>8,621</b>	<b>-1127</b>
<b>Non-KDOC Facilities</b>						
Larned State Hospital	4	4	0	5	4	-1
Contract Jail Placement [County]	-	-	0	95	56	-39
Contract Jail Placement [Out-Of-State]	-	-	0	83	66	-17
** Labette CCC	-	-	0	-	-	0
Johnson County Res. Center (WR)	-	-	0	2	-	-2
<b>Subtotal: Non-KDOC Facilities</b>	<b>4</b>	<b>4</b>	<b>0</b>	<b>185</b>	<b>126</b>	<b>-59</b>
<b>Total: All Facilities/Placements</b>	<b>8,749</b>	<b>8,686</b>	<b>-63</b>	<b>9,933</b>	<b>8,747</b>	<b>-1186</b>
<b>Female Population (included in totals above)</b>						
Topeka -Total	741	749	8	887	752	-135
Winfield (WWR)	-	-	0	-	-	0
Contract Jail Placement [County]	-	-	0	4	-	
Contract Jail (Jo. Co. Res. Center)	-	-	0	-	-	0
Larned State Hospital	3	3	0	4	3	-1
** Labette CCC	-	-	0	-	-	0
House Arrest	-	-	0	-	-	0
<b>Subtotal: Females</b>	<b>744</b>	<b>752</b>	<b>8</b>	<b>895</b>	<b>755</b>	<b>-140</b>

\* Federal inmates housed at TCF under contract between the Federal Bureau of Prisons and the Kansas Department of Corrections.

\*\* Housing unit closed (or placement option removed) during FY 2009 because of budget constraints. NCF-East (Stockton) re-opened 9-2010.

## Inmate Population and ADP

\*\*\* Average Daily Population (ADP) columns: *Because of rounding, the sum of the units might not equal the total for the facility. And, the sum of the facilities might not equal the grand total. Does not include House Arrest*  
Data comes directly from OMIS rpt: ISR0333 monthly Population Report







Kansas Department of Corrections  
End-of-Month Offender Population Report: April 2021 (Month 10, FY 2021)

**Table 2**  
**Total Admission and Release Events: FY 2019, FY 2020, FY 2021**

Type of Admission	Total Admissions			Avg. Number Per Month		
	FY 2019	FY 2020	FY 2021	FY 2019	FY 2020	FY 2021
<b>Admissions by Court Action:</b>						
010-1010 New Court Commitment	1,954	1,548	1,065	162.8	129.0	106.5
010-1022 *Sanction from Probation (CC)	1,186	284	184	98.8	23.7	18.4
010-2010 Probation Violator, No New Sentence	1,397	1,226	920	116.4	102.2	92.0
010-2020 Probation Violator, New Sentence	355	284	198	29.6	23.7	19.8
010-2022 Probation Violator, New Conviction	68	75	37	5.7	6.3	3.7
020-1020 Parole Violator, New Sentence	182	129	86	15.2	10.8	8.6
020-1025 Parole to Detainer, New Sentence	19	35	16	1.6	2.9	1.6
020-6020 Non Violator Return, New Sentence	83	50	34	6.9	4.2	3.4
020-2022 Cond Rel Violator Pend New Sentence	-	-	-	0.0	0.0	0.0
020-1022 Parole Violator, Pending New Sentence	-	3	1	0.0	0.3	0.1
<b>Subtotal: Court Commitments</b>	<b>5,244</b>	<b>3,634</b>	<b>2,541</b>	<b>437.0</b>	<b>302.8</b>	<b>254.1</b>
020-4010 Return from Court Appearance	105	91	70	8.8	7.6	7.0
<b>Subtotal: Admission by Court Action</b>	<b>5,349</b>	<b>3,725</b>	<b>2,611</b>	<b>445.8</b>	<b>310.4</b>	<b>261.1</b>
<b>Return by KDOC Action:</b>						
020-1010 Parole Violator, No New Sentence	1,090	785	351	90.8	65.4	35.1
020-2010 Cond Rel Viol No New Sentence	1	1	8	0.1	0.1	0.8
020-6010 Non Violator Return No New Sentence	5	1	1	0.4	0.1	0.1
020-5010 Return from Escape	4	7	1	0.3	0.6	0.1
Par/CR/PRS/ Adm. Hold--Poss. Vio.	-	-	-	0.0	0.0	0.0
040-1010 Adm In lieu of Revoc. -Par/CR	11	6	-	0.9	0.5	0.0
<b>Subtotal: Return by KDOC Action</b>	<b>1,111</b>	<b>800</b>	<b>361</b>	<b>92.6</b>	<b>66.7</b>	<b>36.1</b>
<b>Inter-jurisdictional Transfer:</b>						
010-4010 Interstate/Fed Compact Received (Interstate)	4	4	3	0.3	0.3	0.3
020-3010 Ks Inmate Returned - Other Jurisdiction	22	28	19	1.8	2.3	1.9
<b>Subtotal: Inter-jurisdictional Transfer</b>	<b>26</b>	<b>32</b>	<b>22</b>	<b>2.2</b>	<b>2.7</b>	<b>2.2</b>
<b>Total: All Types of Admission</b>	<b>6,486</b>	<b>4,557</b>	<b>2,994</b>	<b>540.5</b>	<b>379.8</b>	<b>299.4</b>

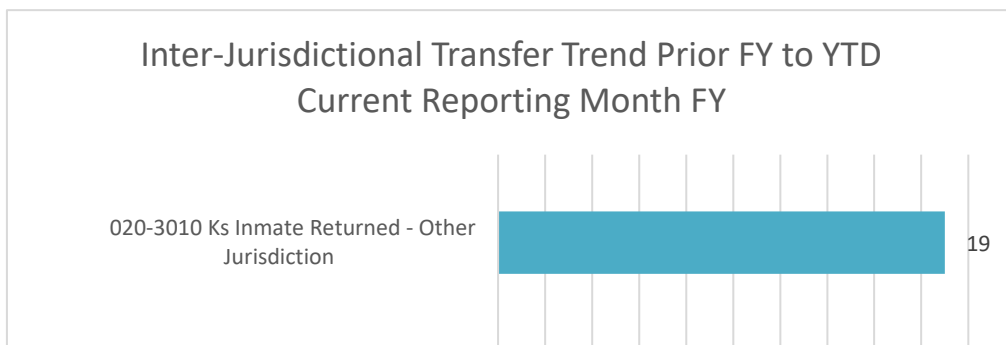
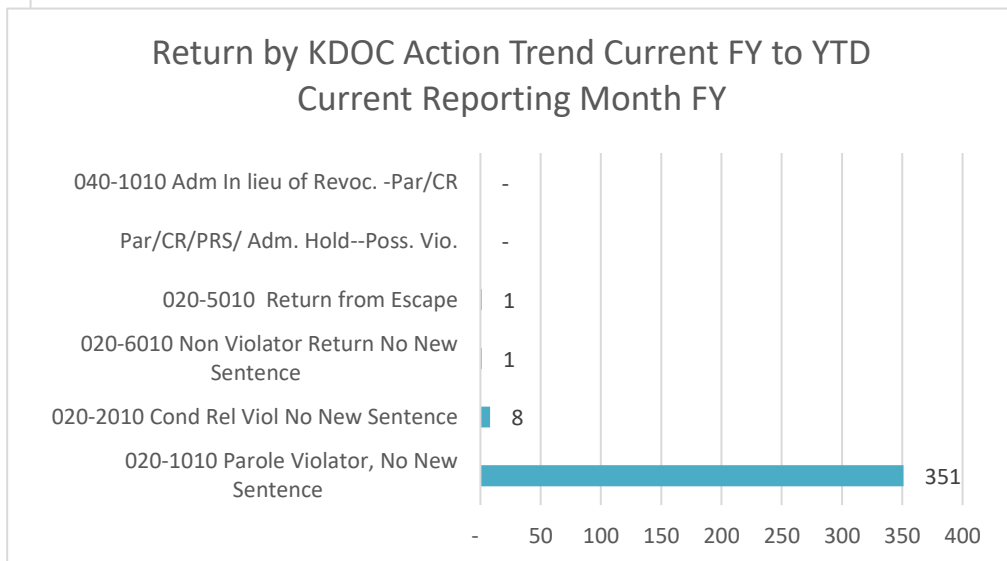
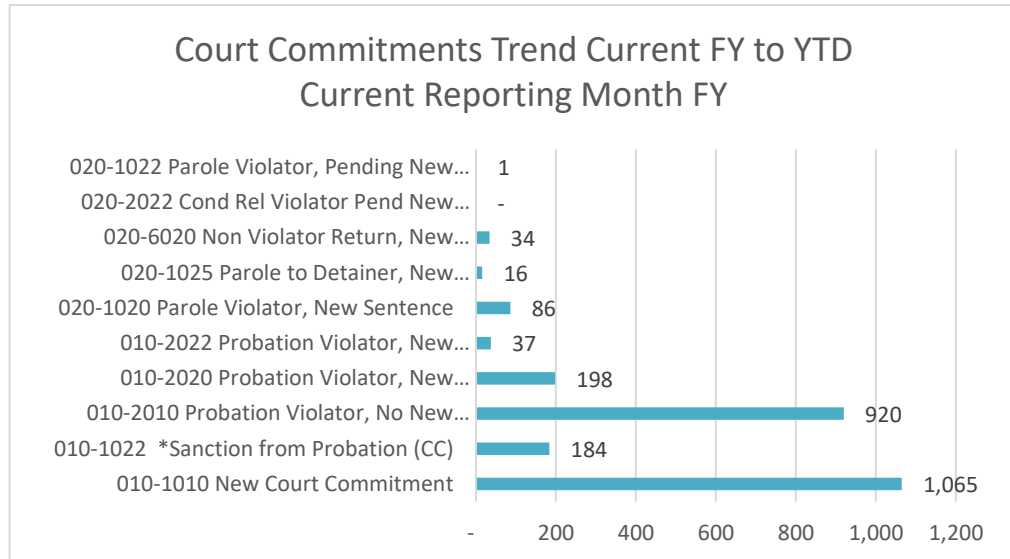
Note: Totals may be slightly off when comparing to page 3 due to rounding.

Source: KDOC computerized report PGM-ISR0445 page1 Admission YTD.

\*Sanctions 120 days or less is 90 offenders; Sanctions 180 days or greater is 76 offenders



Note: except for the layout and the average number per month for the reporting FY, the Total Admissions for the current FY is the same as shown on the OMIS report: ISR0445 less: Movement code: 010-1020: NCC - Aggrav. Juv Delin. contains YTD data as of reporting month



Admissions



Kansas Department of Corrections  
End-of-Month Offender Population Report: April 2021 (Month 10, FY 2021)

**Table 2 (continued)**  
**Total Admission and Release Events: FY 2019, FY 2020, and FY 2021**

<u>Type of Release</u>	Total Releases			Avg. Number Per Month		
	FY 2019	FY 2020	FY 2021	FY 2019	FY 2020	FY 2021
<b>Release to Post-incarceration Supervision**</b>	<b>4,781</b>	<b>4,607</b>	<b>3,096</b>	<b>398.4</b>	<b>383.9</b>	<b>309.6</b>
<b>Conditional Release</b>	<b>-</b>	<b>-</b>	<b>-</b>	<b>0.0</b>	<b>0.0</b>	<b>0.0</b>
<b>Expiration of Sentence</b>	<b>1,431</b>	<b>620</b>	<b>243</b>	<b>119.3</b>	<b>51.7</b>	<b>24.3</b>
<b>Commutation or Pardon</b>	<b>-</b>	<b>-</b>	<b>-</b>	<b>0.0</b>	<b>0.0</b>	<b>0.0</b>
<b>Inter-jurisdictional Transfer:</b>						
Kansas Inmate Released for Housing	14	6	2	1.2	0.5	0.2
Interstate/Fed. Inmate Released to Sending Juris. (C)	5	2	3	0.4	0.2	0.3
<b>Subtotal: Inter-jurisdictional Transfer</b>	<b>19</b>	<b>8</b>	<b>5</b>	<b>1.6</b>	<b>0.7</b>	<b>0.5</b>
<b>Court-ordered Release:</b>						
Probation	15	13	9	1.3	1.1	0.9
Returned Parolee Placed on Probation	-	-	-	0.0	0.0	0.0
Released on Appeal Bond	1	-	1	0.1	0.0	0.1
Released for Court Appearance	124	107	81	10.3	8.9	8.1
Other Final Release by Court Order	14	15	19	1.2	1.3	1.9
<b>Subtotal: Court-ordered Release</b>	<b>154</b>	<b>135</b>	<b>110</b>	<b>12.8</b>	<b>11.3</b>	<b>11.0</b>
<b>Escape</b>	<b>3</b>	<b>8</b>	<b>-</b>	<b>0.3</b>	<b>0.7</b>	<b>0.0</b>
<b>Death (All Causes)</b>	<b>29</b>	<b>33</b>	<b>44</b>	<b>2.4</b>	<b>2.8</b>	<b>4.4</b>
<b>Total: All Types of Release</b>	<b>6,417</b>	<b>5,411</b>	<b>3,498</b>	<b>534.8</b>	<b>450.9</b>	<b>349.8</b>

\* Certain types of transactions involving known temporary exits from a correctional facility have been excluded from the body of the table (release to court/return from court--).

\*\* Includes releases to post-incarceration supervision via the provisions of the Kansas Sentencing Guidelines Act of July 1993, as well as parole releases by action of the Kansas Prisoner Review Board.

Note: Totals may be slightly off due to rounding when comparing to page 3

## Releases

Note: apart from the layout and the average per month for the current FY,  
the data in the Total Releases reporting FY is identical as shown  
on the OMIS report: ISR0445 (contains YTD data as of the reporting month)

Kansas Department of Corrections  
 End-of-Month Offender Population Report: April 2021 (Month 10, FY 2021)  
**Table 3**  
**Distribution of Inmate Population by Type of Latest Admission:**  
**Comparison of March 31st, 2021 and April 30th, 2021**

*Note. The information presented here pertains to the inmate population on the specified dates and not to admissions during the period.*

Type of Admission [Latest Admission Per Master Record]		*Number of Inmates		
Admission Code [OMIS]	Admission Description	3/31/2021	4/30/2021	Difference Mar minus Apr
<b>Admission by Court Action:</b>				
010-1010	New Court Commitment	5,890	5,850	(40)
010-1022	Sanction from Probation	33	31	(2)
010-2010	Probation Violator, No New Sentence	1,032	1,034	2
010-2020	Probation Violator, New Sentence	739	734	(5)
010-2022	Probation Violator, New Conviction	71	64	(7)
020-1020	Parole Violator, New Sentence	535	527	(8)
020-1025	Parole to Detainer, New Sentence	41	38	(3)
020-1022	Parole Violator, Pending New Sentence	-	1	1
020-2020	Conditional Release Violator, New Sentence	16	16	-
020-2022	Conditional Release Violator Pending New Sentence	1	1	-
020-6020	Non-violator Return, New Sentence	44	45	1
040-1010	Admit in lieu of revocation of Parole/CR	-	-	-
<b>Subtotal: Latest Adm. as Court Commitment</b>		<b>8,402</b>	<b>8,341</b>	<b>(61)</b>
<b>Return by KDOC Action:</b>				
020-1010	Parole Violator, No New Sentence	263	264	1
020-2010	Conditional Release Violator, No New Sentence	12	11	(1)
020-5010	Return from Escape	-	-	-
020-6010	Non-violator Return, No New Sentence	5	3	(2)
050-1010	Par/CR/PRS/ Adm. Hold--Poss. Vio.	-	-	-
<b>Subtotal: Latest Adm. as Return by KDOC Action</b>		<b>280</b>	<b>278</b>	<b>(2)</b>
<b>Inter-jurisdictional Transfer:</b>				
010-4010	Interstate/Federal Compact Received	65	65	-
020-3010	Kansas Inmate Returned from Another Jurisdiction	2	2	-
<b>Subtotal: Latest Adm. as Inter-jurisdictional Transfer</b>		<b>67</b>	<b>67</b>	<b>-</b>
<b>Total: All Types of Admission (# of Offenders)</b>		<b>8,749</b>	<b>8,686</b>	<b>(63)</b>

\*The SAS POP end-of-month population figure sometimes varies slightly from the OMIS population report because the SAS file is generated at a different time of day than the OMIS population report.

## Inmate Population by Type of Latest Adm.

Note: the data for the current reporting month comes from syntax run using SPSS using the Pop file in the OMIS SAS library created at end of reporting month. Use the data for each admission code in the total column of the spss output



Kansas Department of Corrections  
 Graphic Highlights -- Monthly Offender Population Report (April 2021)

**Number of Admissions for Probation Sanctions by YTD Reporting Month: FY2017 - FY2021**

