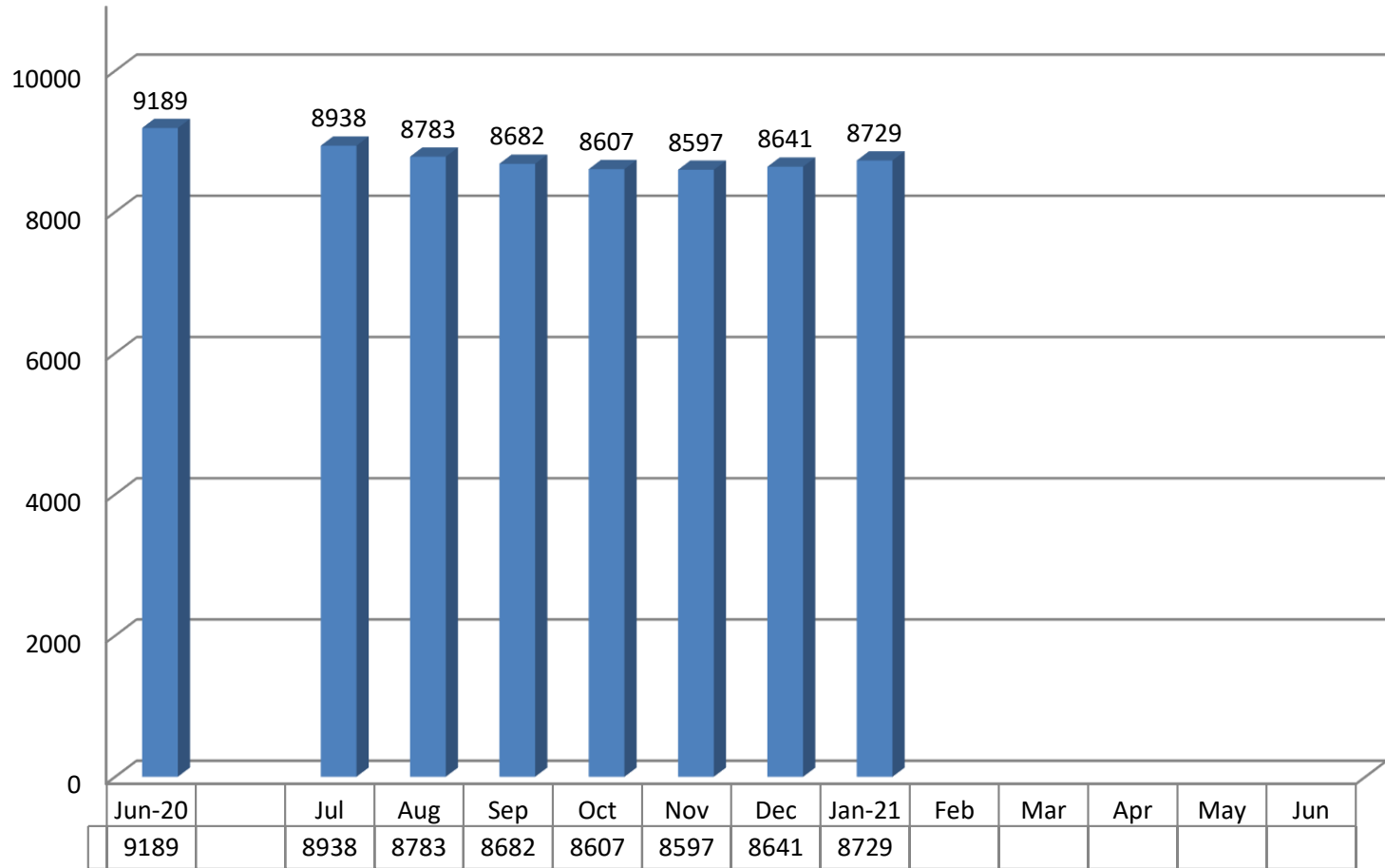


Kansas Department of Corrections
Graphic Highlights -- Monthly Offender Population Report: (January 2021)
End-of-Month Inmate Population: FY 2021 To-Date

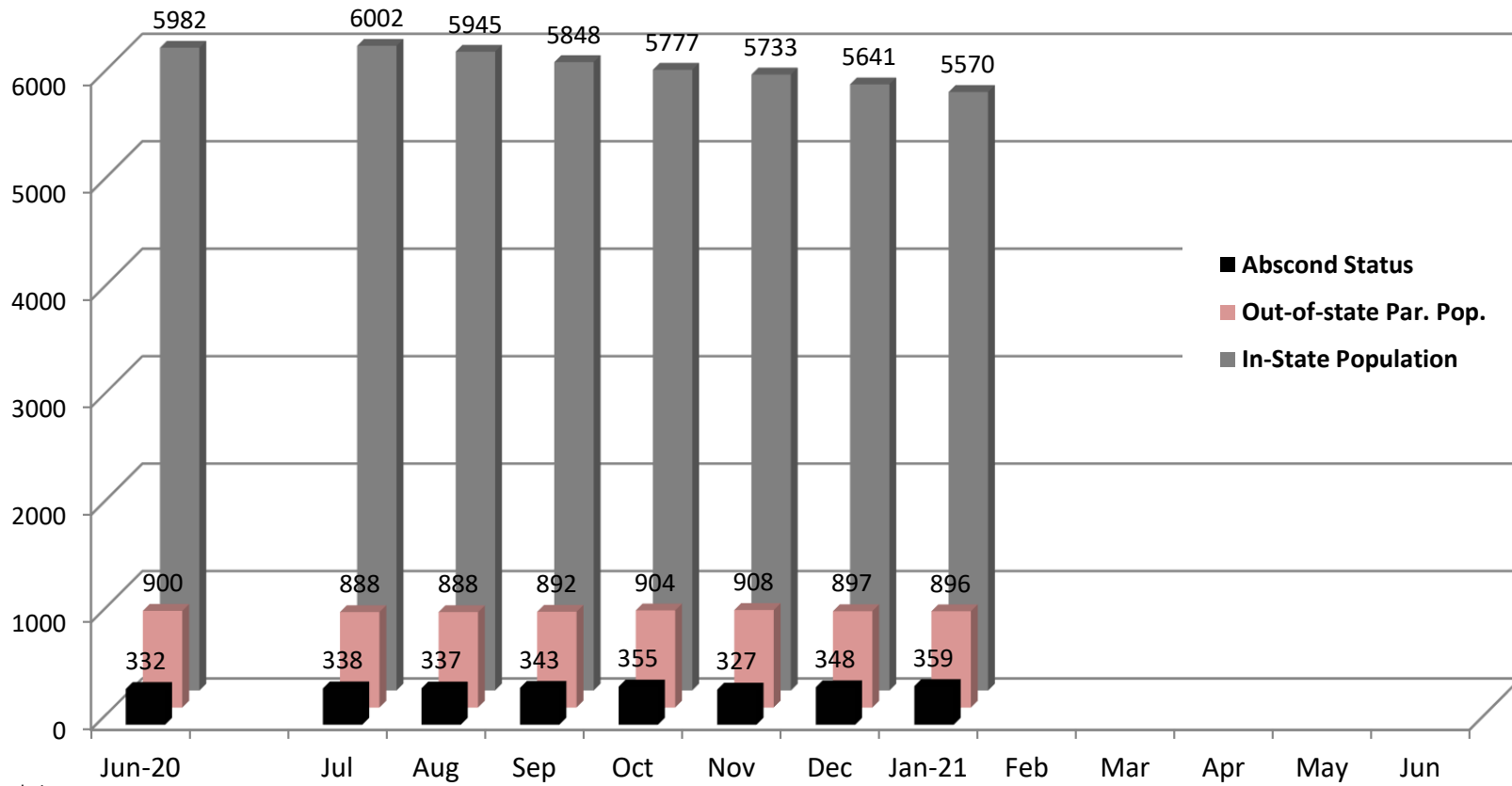


Change from Prev. Mo : 88
 Change from June, 2020 : -460

**Figures reflect the total inmate population (combined DOC and Non-DOC facility populations) as shown on OMIS rpt - ISR0333 page1.*

**Kansas Department of Corrections
Graphic Highlights -- Monthly Offender Population Report (January 2021)**

**Components of the End-of-Month Population Under Post-Incarceration Management:
FY2021**



In-State Population
(Change):

Change from Prev. Month: -71

Change from June, 2020 : -412

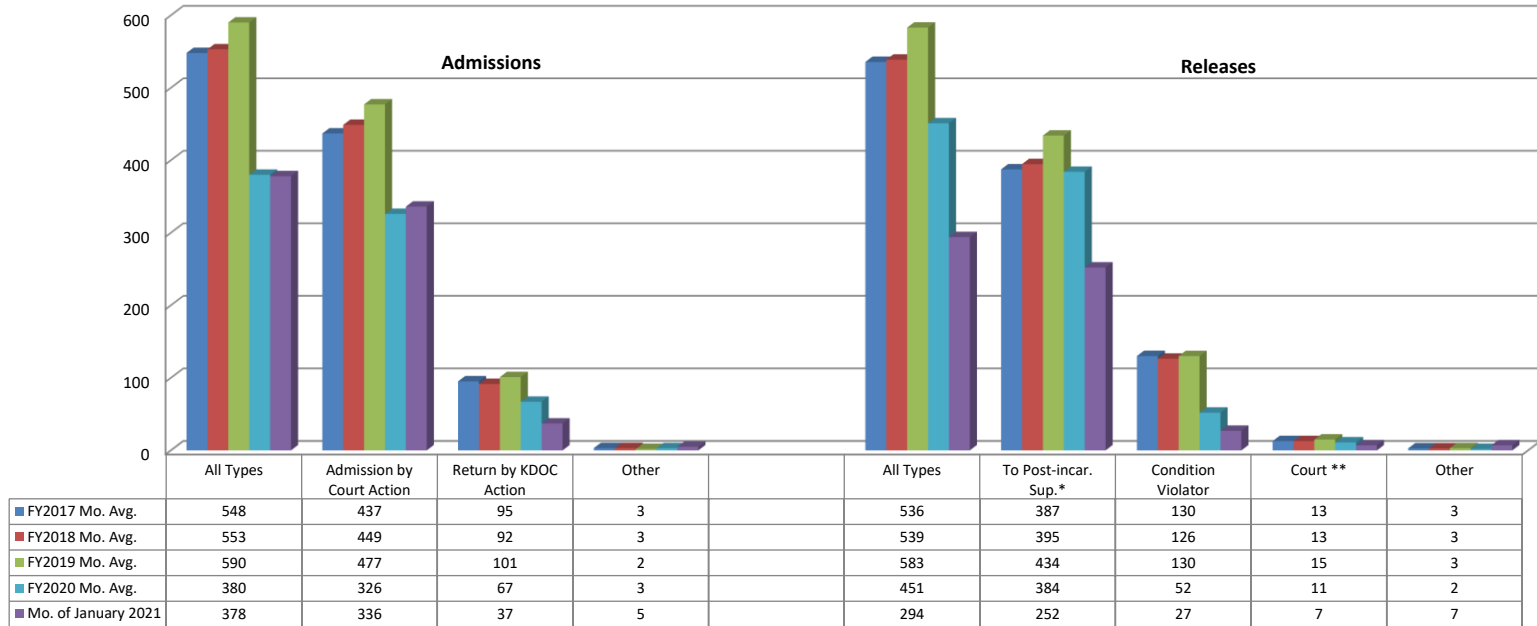
**In-state population is comprised of Kansas offenders supervised in Kansas and out-of-state offenders supervised in Kansas. Out-of-state population is comprised of Kansas offenders supervised out-of-state. Those on abscond status have active warrants (whereabouts unknown)*

Note: The number of parole offenders drastically reduced in August due to the Justice Reinvestment Initiative which you may read more about at the following website:

<http://www.doc.ks.gov/victim-services/justice-reinvestment> (data are from the OMIS rpt: ISR0333 page 2: parole population)

Kansas Department of Corrections
 Graphic Highlights -- Monthly Offender Population Report: January 2021)

Number of Admission and Release Events Per Month (by Major Category): Comparison of FY2017, FY2018, FY2019, FY2020, and FY2021 Monthly Averages with Current Month's Totals



* Includes releases to supervision via the provisions of the Kansas Sentencing Guidelines Act of 1993, as well as parole releases by action of the Kansas Prisoner Review Board.

**Figure can be a negative number for a particular month [since it is based on the total number whose last exit for the period (fiscal year to date) was via "out-to-court" minus the previous month's total, which can be a smaller or greater number].

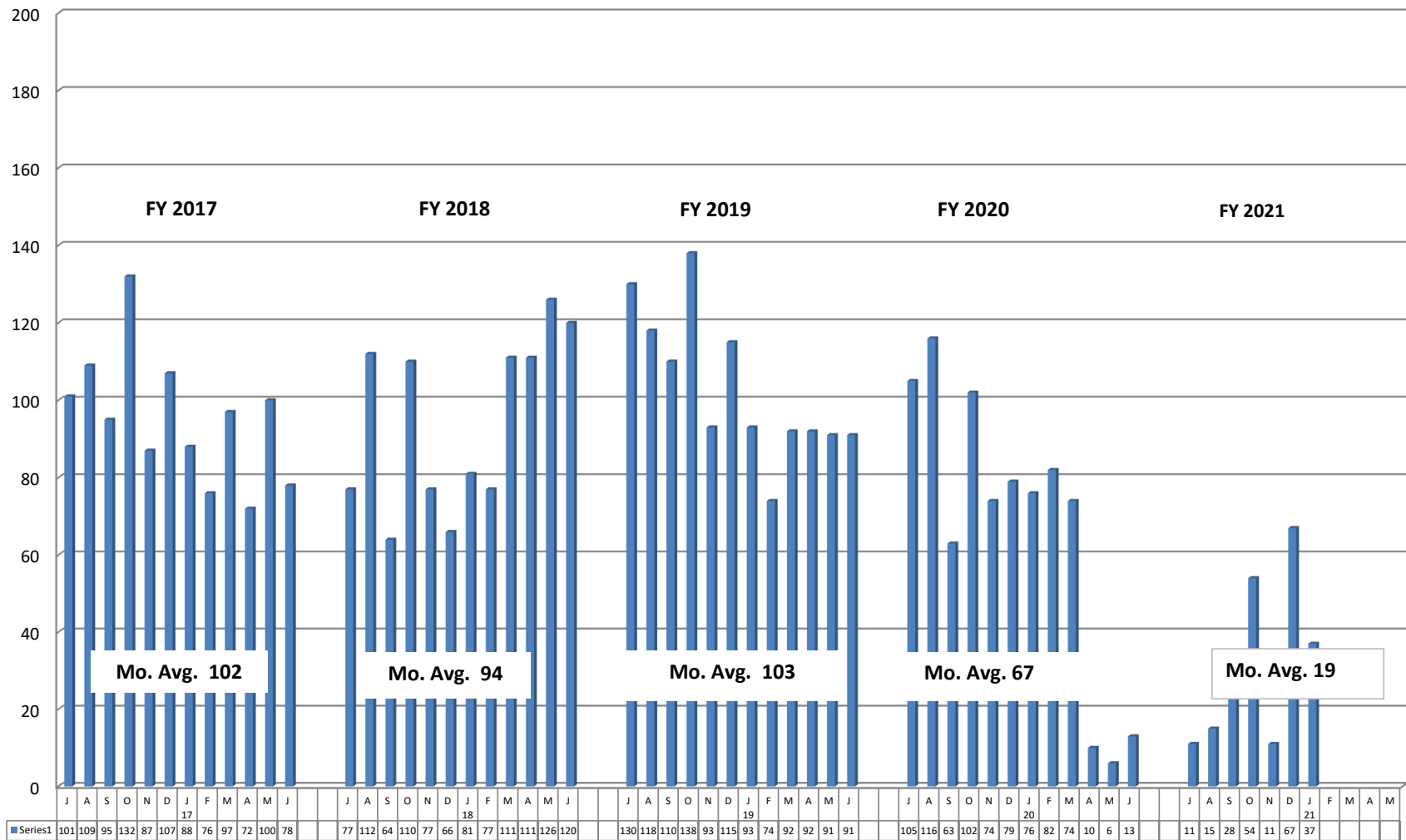
Note: Returned from court appearance is included in the All Types Admission total; returned from escape are included in the All Type Releases total but not its own personal category and Inter-Jurisdictional transfers are included in the All Types Releases total (included in chart). Note: Admissions FY20 April May 2020 Covid19 Impact for April May 2020

Note: Number of escapees and Non-Violator Return - No New Sentence is not included in the Admissions Data from OMIS rep ISR0445 In and out Admissions and Releases

Kansas Department of Corrections

Graphic Highlights -- Monthly Offender Population Report January: 2021)

Number of Return Admissions for Condition Violations by Month (Return by KDOC Action OMIS rpt: ISR0445 page1): **FY2017 - FY2021***



*Total number of admissions for violation of the conditions of release (no new sentence).

Kansas Department of Corrections
 End-of-Month Offender Population Report: January 2021 (Month 7, FY 2021)

Table 1
Number of Inmates Confined and Average Daily Population: FY 2020 and FY 2021

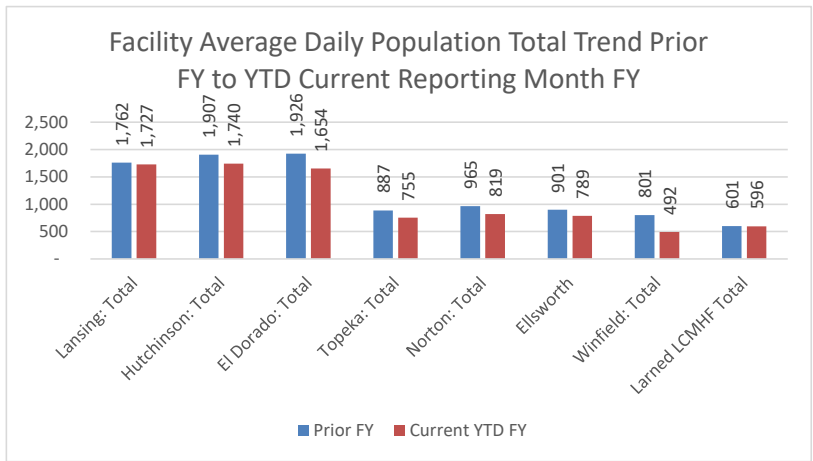
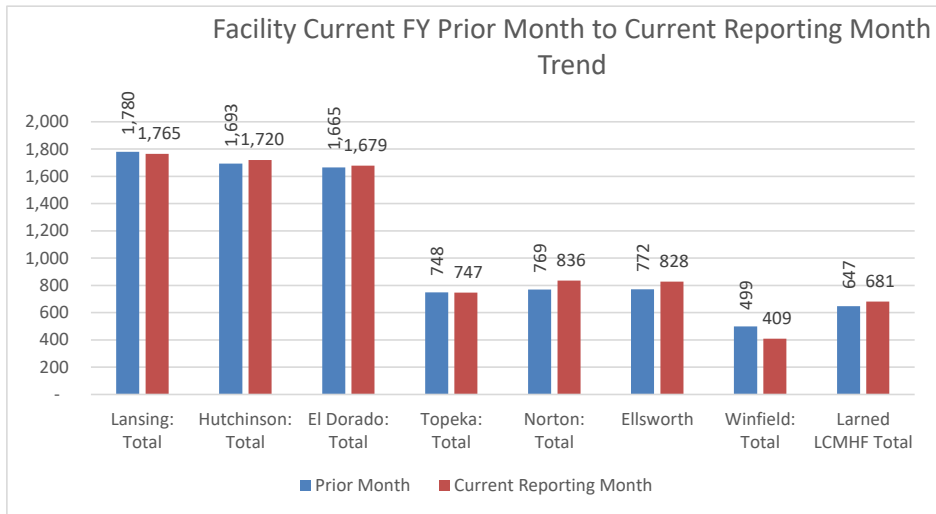
Correctional Facility	Number Confined			Average Daily Population***		
	12/31/2020	1/31/2021	Change	FY 2020	FY 2021	Change
KDOC Facilities						
Lansing: Total	1,780	1,765	-15	1,762	1,727	-35
Central	1,462	1,437	-25	1,311	1,402	91
East	318	328	10	451	325	-126
** South (Osawatomie)	-	-	0	-	-	0
Hutchinson: Total	1,693	1,720	27	1,907	1,740	-167
Central	1,045	1,072	27	1,087	1,054	-33
East	395	388	-7	494	409	-85
South	253	260	7	315	275	-40
Work Release	-	-	0	11	2	-9
El Dorado: Total	1,665	1,679	14	1,926	1,654	-272
Central (General Population)	1,110	1,129	19	1,242	1,177	-65
Central - RDU	485	475	-10	435	406	-29
South-East	70	75	5	249	71	(178)
Topeka: Total	748	747	-1	887	755	-132
Central (General Population)	672	679	7	810	704	-106
RDU	76	68	-8	54	51	-3
* Federal Inmates	-	-	0	-	-	0
Work Release	-	-	0	23	-	-23
Norton: Total	769	836	67	965	819	-146
Central	769	749	-20	839	732	-107
** East (Stockton) <i>re-opened 9-2010</i>	-	87	87	126	87	-39
Ellsworth	772	828	56	901	789	-112
General Population	772	828	56	901	789	-112
Work Release	-	-	0	-	-	0
Winfield: Total	499	409	-90	801	492	-309
Central	499	409	-90	582	492	-90
Wichita Work Release	-	-	0	219	-	-219
Larned LCMHF Total	647	681	34	601	596	-5
Central	285	298	13	310	294	-16
South	120	132	12	15	66	51
West	242	251	9	276	236	-40
Work Release	-	-	0	-	-	0
House Arrest	-	-	0	2	-	
Subtotal: KDOC Facilities	8,573	8,665	92	9,750	8,572	-1178
Non-KDOC Facilities						
Larned State Hospital	3	4	1	5	4	-1
Contract Jail Placement [County]	65	60	-5	95	74	-21
Contract Placement [Arizona Out-of-state]	-	-	0	83	108	25
** Labette CCC	-	-	0	-	-	0
Johnson County Res. Center (WR)	-	-	0	2	-	-2
Subtotal: Non-KDOC Facilities	68	64	-4	185	186	1
Total: All Facilities/Placements	8,641	8,729	88	9,935	8,758	-1177
Female Population (included in totals above)						
Topeka -Total	748	747	-1	887	755	-132
Winfield (WWR)	-	-	0	-	-	0
Contract Jail Placement [County]	-	-	0	4	-	
Contract Jail (Jo. Co. Res. Center)	-	-	0	-	-	0
Larned State Hospital	3	3	0	4	4	0
** Labette CCC	-	-	0	-	-	0
House Arrest	-	-	0	-	-	0
Subtotal: Females	751	750	-1	895	759	-136

* Federal inmates housed at TCF under contract between the Federal Bureau of Prisons and the Kansas Department of Corrections.

** Housing unit closed (or placement option removed) during FY 2009 because of budget constraints. NCF-East (Stockton) re-opened 9-2010.

Inmate Population and ADP

*** Average Daily Population (ADP) columns: Because of rounding, the sum of the units might not equal the total for the facility. And, the sum of the facilities might not equal the grand total. Does not include House Arrest
Data comes directly from OMIS rpt: ISR0333 monthly Population Report



Kansas Department of Corrections
End-of-Month Offender Population Report: January 2021 (Month 7, FY 2021)

Table 2
Total Admission and Release Events: FY 2019, FY 2020, FY 2021

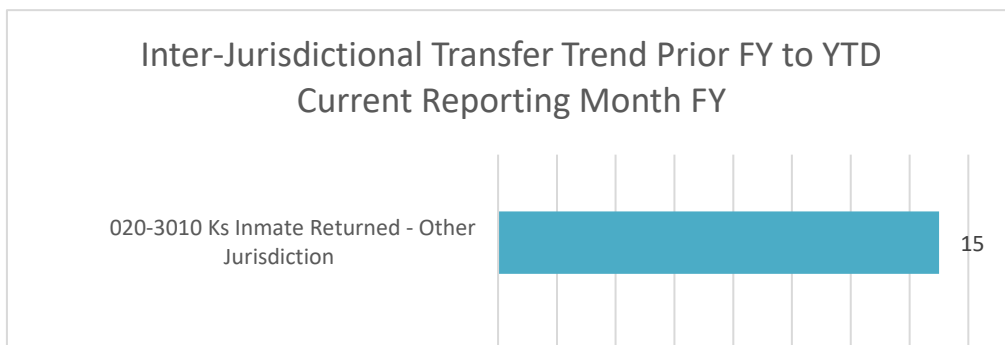
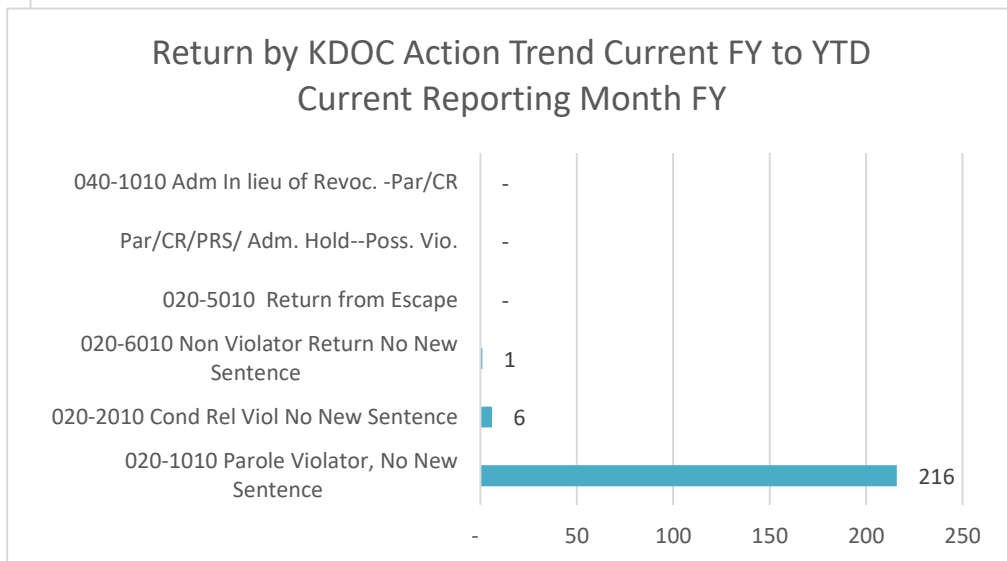
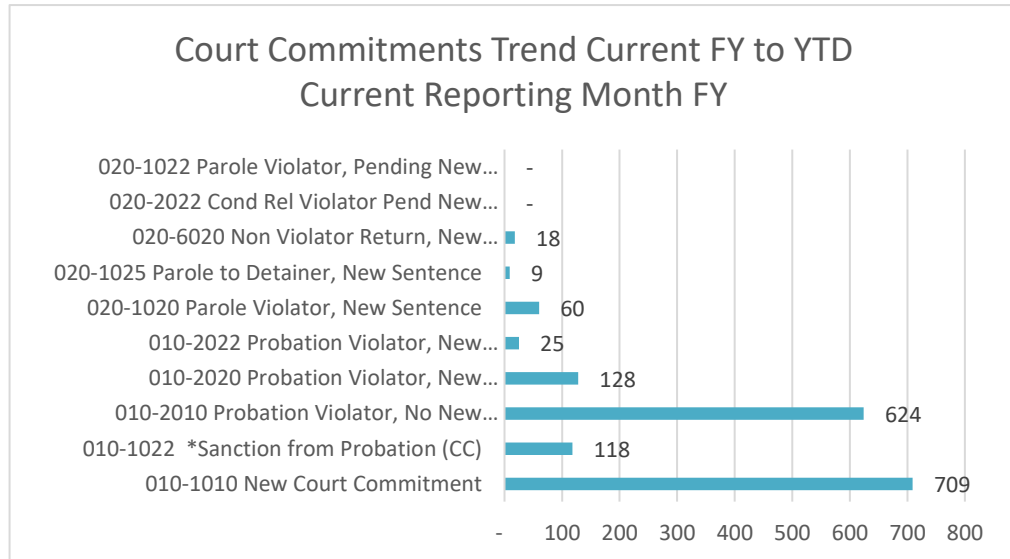
Type of Admission	Total Admissions			Avg. Number Per Month		
	FY 2019	FY 2020	FY 2021	FY 2019	FY 2020	FY 2021
Admissions by Court Action:						
010-1010 New Court Commitment	1,954	1,548	709	162.8	129.0	101.3
010-1022 *Sanction from Probation (CC)	1,186	284	118	98.8	23.7	16.9
010-2010 Probation Violator, No New Sentence	1,397	1,226	624	116.4	102.2	89.1
010-2020 Probation Violator, New Sentence	355	284	128	29.6	23.7	18.3
010-2022 Probation Violator, New Conviction	68	75	25	5.7	6.3	3.6
020-1020 Parole Violator, New Sentence	182	129	60	15.2	10.8	8.6
020-1025 Parole to Detainer, New Sentence	19	35	9	1.6	2.9	1.3
020-6020 Non Violator Return, New Sentence	83	50	18	6.9	4.2	2.6
020-2022 Cond Rel Violator Pend New Sentence	-	-	-	0.0	0.0	0.0
020-1022 Parole Violator, Pending New Sentence	-	3	-	0.0	0.3	0.0
Subtotal: Court Commitments	5,244	3,634	1,691	437.0	302.8	241.6
020-4010 Return from Court Appearance	105	91	66	8.8	7.6	9.4
Subtotal: Admission by Court Action	5,349	3,725	1,757	445.8	310.4	251.0
Return by KDOC Action:						
020-1010 Parole Violator, No New Sentence	1,090	785	216	90.8	65.4	30.9
020-2010 Cond Rel Viol No New Sentence	1	1	6	0.1	0.1	0.9
020-6010 Non Violator Return No New Sentence	5	1	1	0.4	0.1	0.1
020-5010 Return from Escape	4	7	-	0.3	0.6	0.0
Par/CR/PRS/ Adm. Hold--Poss. Vio.	-	-	-	0.0	0.0	0.0
040-1010 Adm In lieu of Revoc. -Par/CR	11	6	-	0.9	0.5	0.0
Subtotal: Return by KDOC Action	1,111	800	223	92.6	66.7	31.9
Inter-jurisdictional Transfer:						
010-4010 Interstate/Fed Compact Received (Interstate)	4	4	2	0.3	0.3	0.3
020-3010 Ks Inmate Returned - Other Jurisdiction	22	28	15	1.8	2.3	2.1
Subtotal: Inter-jurisdictional Transfer	26	32	17	2.2	2.7	2.4
Total: All Types of Admission	6,486	4,557	1,997	540.5	379.8	285.3

Note: Totals may be slightly off when comparing to page 3 due to rounding.

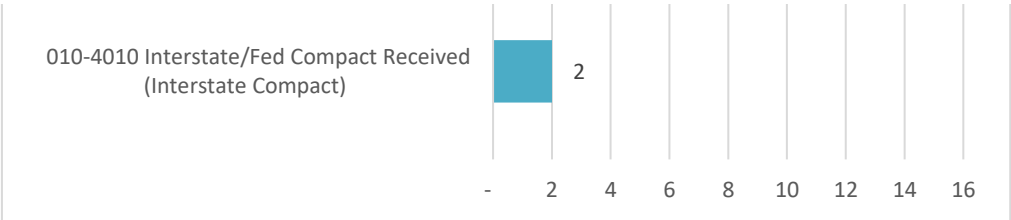
Source: KDOC computerized report PGM-ISR0445 page1 Admission YTD.

*Sanctions 120 days or less is 32 offenders; Sanctions 180 days or greater is 17 offenders

Note: except for the layout and the average number per month for the reporting FY, the Total Admissions for the current FY is the same as shown on the OMIS report: ISR0445 less: Movement code: 010-1020: NCC - Aggrav. Juv Delin. contains YTD data as of reporting month



Admissions



Kansas Department of Corrections
End-of-Month Offender Population Report: January 2021 (Month 7, FY 2021)

Table 2 (continued)
Total Admission and Release Events: FY 2019, FY 2020, and FY 2021

<u>Type of Release</u>	Total Releases			Avg. Number Per Month		
	FY 2019	FY 2020	FY 2021	FY 2019	FY 2020	FY 2021
Release to Post-incarceration Supervision**	4,781	4,607	2,190	398.4	383.9	312.9
Conditional Release	-	-	-	0.0	0.0	0.0
Expiration of Sentence	1,431	620	157	119.3	51.7	22.4
Commutation or Pardon	-	-	-	0.0	0.0	0.0
Inter-jurisdictional Transfer:						
Kansas Inmate Released for Housing	14	6	2	1.2	0.5	0.3
Interstate/Fed. Inmate Released to Sending Juris.	5	2	2	0.4	0.2	0.3
Subtotal: Inter-jurisdictional Transfer	19	8	4	1.6	0.7	0.6
Court-ordered Release:						
Probation	15	13	5	1.3	1.1	0.7
Returned Parolee Placed on Probation	-	-	-	0.0	0.0	0.0
Released on Appeal Bond	1	-	1	0.1	0.0	0.1
Released for Court Appearance	124	107	59	10.3	8.9	8.4
Other Final Release by Court Order	14	15	10	1.2	1.3	1.4
Subtotal: Court-ordered Release	154	135	75	12.8	11.3	10.7
Escape	3	8	-	0.3	0.7	0.0
Death (All Causes)	29	33	32	2.4	2.8	4.6
Total: All Types of Release	6,417	5,411	2,458	534.8	450.9	351.1

* Certain types of transactions involving known temporary exits from a correctional facility have been excluded from the body of the table (release to court/return from court--).

** Includes releases to post-incarceration supervision via the provisions of the Kansas Sentencing Guidelines Act of July 1993, as well as parole releases by action of the Kansas Prisoner Review Board.

Note: Totals may be slightly off due to rounding when comparing to page 3

Releases

Note: apart from the layout and the average per month for the current FY,
the data in the Total Releases reporting FY is identical as shown
on the OMIS report: ISR0445 (contains YTD data as of the reporting month)

Kansas Department of Corrections
 End-of-Month Offender Population Report: January 2021 (Month 7, FY 2021)
Table 3
Distribution of Inmate Population by Type of Latest Admission:
Comparison of December 31st, 2020 and January 31st, 2021

Note. The information presented here pertains to the inmate population on the specified dates and not to admissions during the period.

Type of Admission [Latest Admission Per Master Record]		*Number of Inmates		
Admission Code [OMIS]	Admission Description	12/31/2020	1/31/2021	Difference Dec minus Jan
Admission by Court Action:				
010-1010	New Court Commitment	5,916	5,934	18
010-1022	Sanction from Probation	16	20	4
010-2010	Probation Violator, No New Sentence	984	1,023	39
010-2020	Probation Violator, New Sentence	718	727	9
010-2022	Probation Violator, New Conviction	64	69	5
020-1020	Parole Violator, New Sentence	531	534	3
020-1025	Parole to Detainer, New Sentence	40	40	-
020-1022	Parole Violator, Pending New Sentence	-	-	-
020-2020	Conditional Release Violator, New Sentence	17	17	-
020-2022	Conditional Release Violator Pending New Sentence	1	1	-
020-6020	Non-violator Return, New Sentence	44	43	(1)
040-1010	Admit in lieu of revocation of Parole/CR	-	-	-
Subtotal: Latest Adm. as Court Commitment		8,331	8,408	77
Return by KDOC Action:				
020-1010	Parole Violator, No New Sentence	230	240	10
020-2010	Conditional Release Violator, No New Sentence	10	9	(1)
020-5010	Return from Escape	-	-	-
020-6010	Non-violator Return, No New Sentence	6	5	(1)
050-1010	Par/CR/PRS/ Adm. Hold--Poss. Vio.	-	-	-
Subtotal: Latest Adm. as Return by KDOC Action		246	254	8
Inter-jurisdictional Transfer:				
010-4010	Interstate/Federal Compact Received	63	65	2
020-3010	Kansas Inmate Returned from Another Jurisdiction	2	2	-
Subtotal: Latest Adm. as Inter-jurisdictional Transfer		65	67	2
Total: All Types of Admission (# of Offenders)		8,642	8,729	87

*The SAS POP end-of-month population figure sometimes varies slightly from the OMIS population report because the SAS file is generated at a different time of day than the OMIS population report.

Inmate Population by Type of Latest Adm.

Note: the data for the current reporting month comes from syntax run using SPSS using the Pop file in the OMIS SAS library created at end of reporting month. Use the data for each admission code in the total column of the spss output

Kansas Department of Corrections
 Graphic Highlights -- Monthly Offender Population Report (January 2021)

Number of Admissions for Probation Sanctions by YTD Reporting Month: FY2017 - FY2021

